

CHALLENGER^{'07}

Relax, you deserve it.





CHALLENGER



For an outstanding value at a price you'll appreciate, Challenger fifth wheels offer more features, amenities, and quality than any other fifth wheel in its price range. They are lavishly appointed with fine residential-style furnishings along with special design features that maximize every square inch of living space.

Generous flush-floor slide-outs yield an ample 6'4" inches of headroom for greater, more practical livability. Even the bath area reveals meticulous attention to detail as evident with the elegant marble-look shower surround and luxurious handheld messaging shower head.





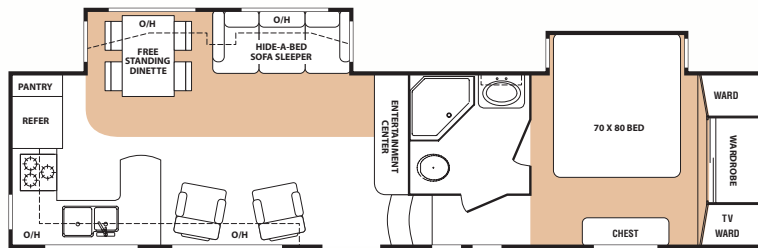
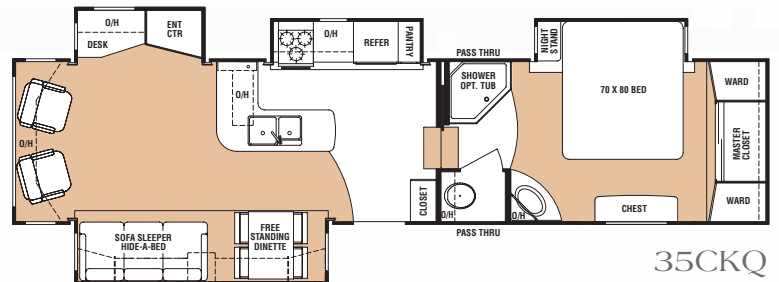
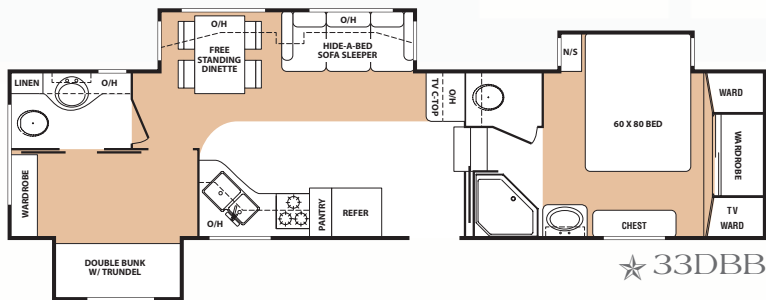
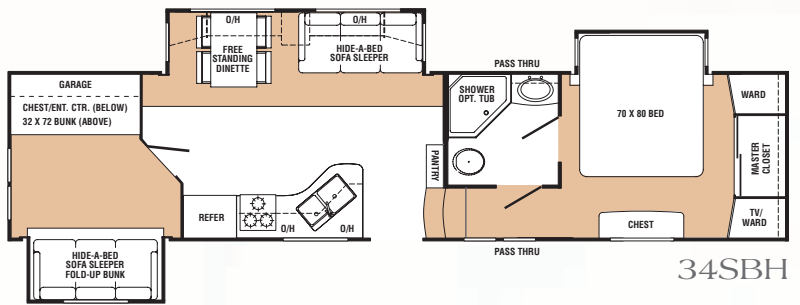
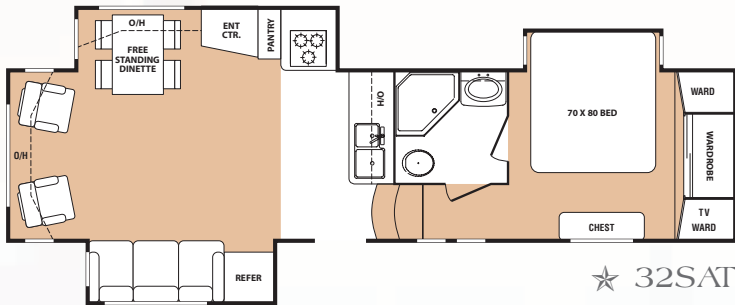
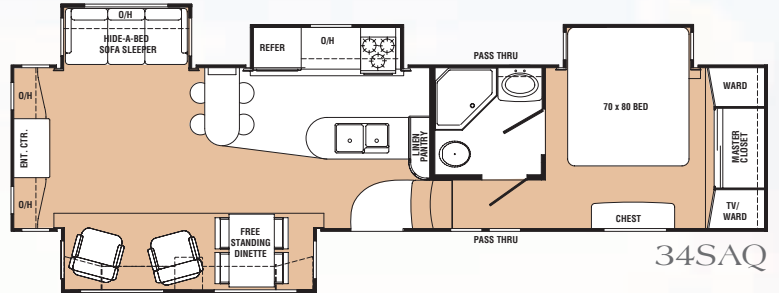
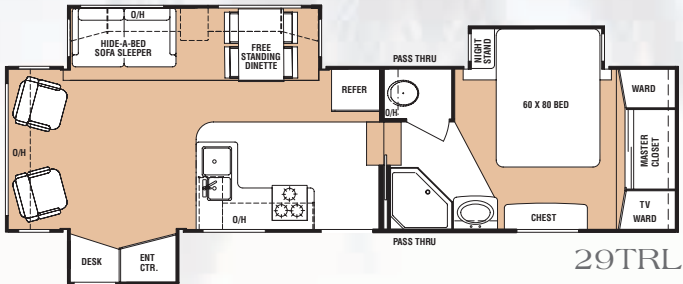
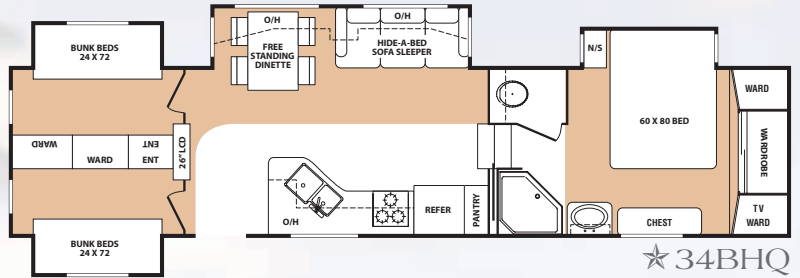
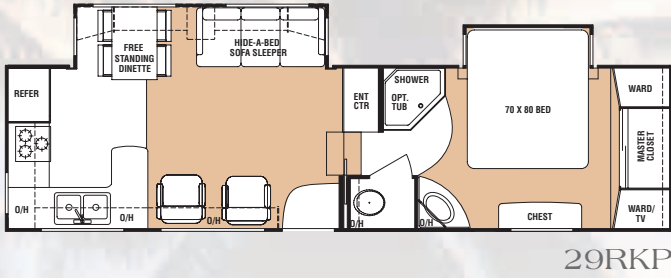
You won't find any compromises in the Challenger kitchen. There is everything a well-equipped kitchen should have including home-like appliances and ample cabinet space and work areas. You can choose from a variety of popular kitchen configurations. Even a versatile island kitchen is available. For serving meals, the free-standing dinette seats four with matching high back dining chairs.



An abundance of storage is designed into the comfort of the Challenger bedroom. A master closet with mirrored sliding doors, side wardrobes, two-drawer night stands, and a large residential chest of drawers hold all your personal belongings whether you're planning to be gone for a short weekend or an entire season.

Even the kids' room has lots of storage with a large wardrobe that even includes an entertainment center and an extra bunk on top.

Floor Plans



★ NEW '07 FLOORPLAN!

★ 33RKS

Standard Features

Interior Features

- Heavy duty residential ball-bearing drawer guides
- 20" deep drawers where applicable
- 5 speaker surround sound with AM/FM stereo, CD and DVD player
- Pre-drilled screwed cabinetry with lumbercor styles (no staples or paperboard)
- Endura™ residential raised panel cabinet doors (upper with 10 year warranty)
- Free standing dinette with 4 highback chairs and Spacemaker tabletop
- High rise kitchen faucet
- Large double door refrigerator
- 6 panel refrigerator front
- Spacemaker microwave oven
- Skylight over shower
- 38" garden shower with marble look shower surround, translucent glass shower door and surround and residential hand-held massaging shower head
- Porcelain foot flush toilet
- Residential king size bed (70x80) (N/A on 29TRL, 33DBB, 34BHQ)
- Innerspring mattress
- Quilted bedspread and pillows
- Deluxe Hide-A-Bed sofa
- Floor ducted heat
- TV antenna with built in amplifier
- Day/night shades
- LP leak detector
- 3 burner range with 22" oven
- Monitor panel
- Charcoal filtered power range hood

Challenger Convenience Package

- Security Lights
- Washer and Dryer Prep
 - Water Purifier
- 16" Undercarriage Tire Kit
 - Exterior Shower
 - Cabon Monoxide Detector

- Cable and satellite ready TV hookup
- Telephone jack
- Ceiling fan with lights
- 1 level master bedroom suite (no step from bath to bed)

Exterior Features

- No-Sweat Vent System™
- A & E™ patio awning
- All in 1 "Waterworks" exterior utility center
- Exterior shower
- Hydraulic pump override
- Dynamic exterior graphics
- Aluminum hot-melt pinch rolled laminated sidewalls
- Smooth gel-coat Filon™ fiberglass exterior
- Easy glider flush floor slide room
- Water heater by-pass
- White clamp-ring windows
- Easy open triple steps
- Entrance door: 6'4" high and 30" wide
- Stabilizer jacks
- Easy lube axles
- Gutters with rain spouts
- 15,000 BTU AC and 35,000 BTU furnace with universal remote control
- Rear ladder
- Power front landing jacks
- No fuss flush, black

- tank flush system
- 50 amp service with detachable power cord
- 16" tires, 6,000 lb. 8 lug axles
- Thermashield™ holding tank enclosure
- Shock absorber mounting plates
- 12 gallon gas/electric water heater with DSI
- Tinted (80%) safety glass windows
- Folding entry handle

Options

- Two bar stools available on 34SAQ
- Booth dinette: 29 TRL, 34SAQ, 35CKQ
- Wire and brace for second A/C in bedroom - non-ducted
- Garden tub I/P/O shower
- Dual A/C Pkg: 15k BTU ducted main A/C; 15.4k BTU non-ducted bedroom A/C.
- Create-aBreeze roof vent in living room
- Desk chair (29TRL, 35CKQ)
- End table (29TRL, 32SAT, 34SAQ, 35CKQ)
- Extra sink cover
- 27" flat screen TV
- CSA Construction

Challenger Fifth Wheel Specifications

	29RKP	29TRL	32SAT	33DBB	33RKS	34BHQ	34SAQ	34SBH	35CKQ
Shipping Weight	9795	10325	10525	11080	TBD	TBD	11200	11155	11455
Carrying Capacity	2705	3395	3755	3260	TBD	TBD	2550	2835	2385
Hitch	2375	1825	2280	2340	TBD	TBD	1970	1990	1840
Exterior Length	32' 7" *	33' 2"	34' 10"	36' 6"	TBD	37' 3"	36' 10"	37' 3"	37' 4"
Ext Height - A/C Top	12' 8"	12' 8"	12' 8"	12' 8"	TBD	12' 8"	12' 8"	12' 8"	12' 8"
Fresh Water	68	68	68	68	68	68	68	68	68
Waste Water	35	35	35	35	35	35	35	35	35
Grey Water	77	77	77	77	77	77	77	77	77
LPG Capacity (lb)	60	60	60	60	60	60	60	60	60
Tire Size	235/80R16E	235/80R16E	235/80R16E	235/80R16E	235/80R16E	235/80R16E	235/80R16E	235/80R16E	235/80R16E
Number of Slides	2	3	3	3	2	4	4	3	4
Awning	18'	20'	16'	16'	TBD	18'	TBD	16'	18'



The huge exterior storage compartment is fully finished and also houses the all-in-one "Waterworks" utility center.



A utility storage compartment is complete with racks, bins, and hanging hooks (34TBH).



The residential Endura™ cabinet doors carry a 10-year warranty to ensure the very best in quality.



16" tires and easy-to-lube axles are a standard in the Challenger fifth wheel line.



Exterior storage doors are extra thick with radius corners for added protection and durability.



Challenger's dual battery and hydraulic pump utility compartment. (Batteries not included)



No-Sweat Vent System™ attic vent dramatically reduces the potential for moisture to accumulate in the roof.

Construction

Welded 2" aluminum framing is at the heart of our 5-layer sidewall construction, engineered to make your Challenger strong and durable while creating a fifth wheel that is easier to tow. Previously found only in fifth wheels at a much higher price point, Challenger's structural integrity assures you of strength, superior insulation, and durability for many years to come.

Decor



Indigo Blue

Saratoga Sage

Autumn

CHALLENGER

is a product of:  **Keystone RV Company**

2642 Hackberry Drive, Goshen, IN 46526
(574) 535-2100

www.keystone-challenger.com



Product information is as accurate as possible at the time of publication. Features, floor plans, and specifications are subject to change without notice. Please also consult Keystone's web site at Keystonerv.com for more current product information and specifications. **Tow Vehicle Disclaimer:** CAUTION! Owners of Keystone recreational vehicles are solely responsible for the selection and proper use of tow vehicles. All customers should consult with a motor vehicle manufacturer or their dealer concerning the purchase and use of suitable tow vehicles for Keystone products. Keystone disclaims any liability or damages suffered as a result of the selection, operation, use or misuse of a tow vehicle. **KEYSTONE'S LIMITED WARRANTY DOES NOT COVER DAMAGE TO THE RECREATIONAL VEHICLE OR THE TOW VEHICLE AS A RESULT OF THE SELECTION, OPERATION, USE OR MISUSE OF THE TOW VEHICLE.** 5/06

Dealer:



1. One-Piece High-Gloss Fiberglass Gooseneck Corner Wraps
2. Gel-Coated Filon Fiberglass
3. 1/8" Lauan Wood Backer
4. Second Layer 1/8" Lauan Wood Backer w/Staggered Seams
5. Solid Block EPS (Expanded Polystyrene) Insulation
6. Radius Window Corner Blocks
7. Metal Backing Strips (EGS -Electro-Galvanized Sheet)
8. 2" Welded Aluminum Sidewall Studs
9. No-Sweat Vent System™

Insulation Factors

Walls - R-9 • Roof - R-10 • Floor - R-17

All R factors are estimated from composite ratings.