

2009 *Tour*®



# 50 years on the road

Since the first Winnebago Industries RV rolled off the assembly line 50 years ago, the RV lifestyle has grown from a curiosity to a phenomenon. We're proud to have led the way with innovative products, quality construction and a passion for customer satisfaction. Join all of us in the extended Winnebago Industries family as we celebrate 50 years of travel, tailgates and extended weekends.

Full-body Paint



**HARVEST GOLD**



**IRON RANGE**

Full-body Paint



**RED HOT**



**SANDSTONE**

Full-body Paint



**SILVER STREAK**



**WOODLAND**

Every coach is protected with a double clear-coat exterior for a long lasting sheen.

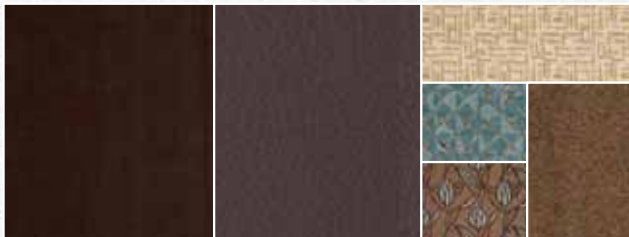


**50 YEARS ON THE ROAD**

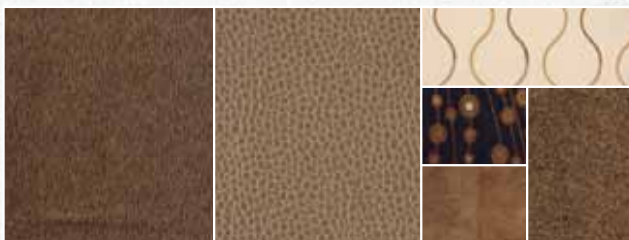
# Interior Decor

Choose from three fabric selections and five cabinet wood choices with hidden hinges.

MAIN	ULTRA-LEATHER	BEDSPREAD	
		ACCENT	CARPET
		ACCENT	



*BEACHGLASS WITH AVAILABLE TRUFFLE ULTRALEATHER™*



*SABLEWOOD WITH AVAILABLE FIELDS ULTRALEATHER*



*STONEHENGE WITH AVAILABLE PINE CONE ULTRALEATHER*



*CONCERT  
CHERRY*



*WASHED  
MAPLE*



*SIERRA  
MAPLE*



*BELMONT  
MAPLE*



*HONEY  
CHERRY*



## 2009 *Tour*®

Live large in the Winnebago Tour®. It all starts with the Maxum Chassis®, which sets the diesel-pusher standard for its exceptional ride, smooth handling and unprecedented exterior storage capacity. Inside the coach you'll find many of the finest motor home amenities in four models tailored to those with discriminating tastes. Winnebago Industries' exclusive SmartSpace™ design uses innovative features to make the most of the available space, which is evident in the abundant storage of the full-wall slideouts in the 40WD. See the country in grand style in a new 2009 Winnebago Tour.



## Relax and enjoy.

A rich, inviting interior with beautiful solid-wood cabinetry in the lounge and galley and ceramic tile flooring make it easy to feel at home in the Tour. Soft UltraLeather™ is an available upgrade on most furniture pieces, including the Rest Easy® lounge and the available Rest Easy theater seating. A hoop-base lounge chair on the 40FD and 40TD can be moved anywhere in the coach when you are parked. It can also be upgraded to a sleek Euro chair with ottoman.

A 32" LCD HDTV comes standard in the front overhead entertainment center on the 40KD and 40WD. An additional 37" LCD HDTV is standard mid-coach to provide excellent views from every angle (NA 40KD). The home theater sound system includes a CD/DVD player and the coach comes pre-wired for the available King-Dome® HD-ready in-motion satellite dish to give you high-quality entertainment on the road.

Dual-glazed, flush-mounted windows with day/night pleated shades and TrueAir® residential central air conditioning let you determine your level of privacy and provide precision climate control.



The **WEB** icon designates a Winnebago Industries Key Feature. For further in-depth information and photos, use the drop-down menu or click on the 'Key Features' page at [gowinnebago.com](http://gowinnebago.com).



**DRAWERS** Drawers are sized for maximum storage, hold tight with positive latches and open on full-extension slides for easy access.



### DRIVER CAB SEAT

The UltraLeather captain's seat comes standard with a six-way power assist pedestal for the ultimate in driving pleasure. The passenger seat features an available footrest and available six-way power assist pedestal for added comfort. Both seats swivel to become part of the living area.





**U-SHAPED DINETTE** The 40WD includes an UltraLeather U-shaped dinette with a table top that slides forward for easy entrance and exit. All other models offer the BenchMark® full-comfort dinette with innerspring seats that lift up to access storage. The BenchMark dinette also includes an anchor for a child safety seat (NA 40TD and 40WD).



**THEATER SEATING** The available Rest Easy theater seats recline independently at the touch of a button with power seat backs, footrests and flip-out cup holders. The center armrest compartment is a perfect place to store remotes and magazines. At night, the theater seats quickly convert into twin beds.

## Exquisite tastes.

The longer you experience the Tour, the more you'll appreciate the flow of the floorplans and the enticing features throughout the coach. This is especially true of the refined galley that is comprised of the finest elements, such as Corian® countertops, ceramic tile flooring, solid wood cabinetry and satin nickel hardware. Subtleties like full-extension drawer slides, integrated solid-surface range and sink covers, and an ice and water dispenser built into the available stainless steel refrigerator add to its functionality. A microwave/convection oven, an Amana® range with sealed burners and a large 4-door refrigerator/freezer round out the galley appliances.



**CENTRAL VAC** Cleaning up is a breeze with the available Dirt Devil® central vacuum system. It also features a built-in "vac pan" for easy clean up with a broom.



**REST EASY** The Rest Easy lounge automatically glides from a couch to a recliner to a comfortable bed at the touch of a button. It can be upgraded with UltraLeather, shown here.







40WD Stonehenge with Concert Cherry



WEB

Ideal Rest  
sleep number  
by SELECT COMFORT

**COMFORTABLE BEDS** The Ideal Rest™ body-conforming, memory foam mattress matches your body contours for an excellent night's sleep. You can also choose the Sleep Number® bed by Select Comfort™ with digital remotes that let you independently adjust the firmness of each side of the bed.



**BATHROOM** The flexible showerhead can be handheld or positioned for sitting on the built-in shower seat or standing in the elegant shower.

## Rest and relax.

A large slideout creates a spacious bedroom with abundant storage that includes a large wardrobe. The 40WD and 40KD accommodate a king size bed while the 40FD and 40TD offer a queen. The Moen Posi-Temp® valve makes showers more refreshing by maintaining a consistent temperature, even if water pressure fluctuates. The sizable bathroom is furnished with Corian countertops and a backsplash.



**WASHER/DRYER** The available combination washer/dryer is conveniently located in the bedroom and tucks away behind wood doors. Multiple wash, time and temperature cycles satisfy the needs of every fabric.



**BEDROOM TV** The bedroom's impressive list of electronic components includes a 26" LCD TV and an AM/FM stereo system with CD/DVD player, alarm clock, MP3 input and headphone jack.



## Fit for you.

The Tour is designed for your driving comfort with a tilt/telescope SmartWheel™ steering wheel. Features like an electronic compass/thermometer, defroster fans and a rearview monitor with one-way audio help keep you on the right track. Available side-view cameras and auxiliary backup lights add confidence when maneuvering. You'll always know where you are going when you add the GPgo™ GPS navigation system. It includes a dash-mounted GPS screen and can also be viewed through the available color rearview monitor. You can remove the GPgo unit from its docking station and use it in your tow vehicle.

The RV Radio® includes a CD player, a weather band and an auxiliary input for an iPod/MP3 player. With two remotes, it's easy to control the RV Radio from the steering wheel or the lounge area. Upgrade to the Sirius® satellite radio package for more channels and an iPod interface cable connector that allows you to control your iPod through the dash stereo. A six-month subscription is included with this package. A 10-disc CD changer is also available.



WEB



**DASH AREA** The ergonomic dashboard puts you in command while a light-filtering window shade and powered sunvisors protect you from the sun. A one-piece windshield with radial-arm wipers gives you a clear view of the road.

WEB



Leveling your coach has never been easier with our 3-Position Controls. Raise and lower the automatic jacks from the driver's seat or step outside to monitor jack placement while using the controls at the entrance door or service center.



WEB



The available GPgo™ is a Winnebago Industries exclusive that offers the convenience of a powerful integrated Global Positioning System with the flexibility of a portable GPS. GPgo features a 7" touch screen and a handy remote. The GPgo can also be viewed through the available color rearview monitor and includes a portable unit so you can also use it in your tow vehicle or slip it in your pocket.





**EXTERIOR ENTERTAINMENT CENTER** Enrich your exterior entertainment center with a 26" LCD TV (20" on the 40WD) and DVD player.



## Quality throughout.

The Tour is fully loaded with amenities for life on the road. An 8,000-watt Cummins Onan® Quiet Diesel™ generator comes standard to provide plenty of power when an outside source is not available. You can also rely on four Group 31 coach batteries and the 2,000-watt inverter during quiet hours. A chassis battery disconnect switch prevents battery drain during storage.

Outside you'll find a smartly planned service center with color-coded connection points, a handy wash station and the QuickPort® service connection hatch that allows the bay doors to close with hoses connected. And you won't be able to take your eyes off the sharp exterior provided by full-body paint, stylized aluminum wheels, a one-piece windshield and a lower front protective mask.



**WEB ONE PLACE®** systems center lets you monitor and control key systems from one convenient location.



**WEB TRUELEVEL®** holding-tank monitoring system uses sonar technology to read liquid levels from outside the tank. There are no probes to corrode or clog, just accurate readings time after time.



**WEB POWERLINE®** energy management system monitors electrical usage and automatically cycles appliances on and off to prevent tripped campground circuit breakers.



**WEB TRUEAIR®** residential-style central air conditioning is one of the Tour's many standard luxuries. For 2009, this state-of-the-art system features a 10% increase in overall output.



# MAXUM CHASSIS

WEB



THE LEADER AT EVERY TURN™

**MAXUM CHASSIS Your Ticket to Ride** – Winnebago Industries partnered with Freightliner® to apply our exclusive SuperStructure® technology to the XCL Chassis and created a stronger chassis for exceptional comfort on the road. Take a ride in the Winnebago Tour® and feel how the innovative Maxum Chassis delivers the smoothest ride and handling ever.

**Bring It On** – Up to 220 cubic feet of exterior storage can hold everything you could possibly need for an extended adventure. Winnebago Industries' Smart Storage™ philosophy combines with the Maxum Chassis, yielding taller compartment openings, larger pass-through compartments, and a storage capacity that no other chassis in its class can match. The revolutionary lowered-rail design increases the cross-coach storage height for the most efficient use of space.

**3-year/50,000-Mile Limited Warranty** (including towing and roadside assistance) – more than 400 North American service locations, 60 Freightliner® RV Oasis locations and a 24/7 help line add up to a commitment you can count on.

## The Maxum Advantage

- 32,350-lbs. GVWR
- NeWay® air suspension
- 400-hp ISL Cummins® clean-air diesel engine
- Engine compression brake
- Touchpad shifter
- 55 degree wheel cut
- Allison® 3000 MH 6-speed transmission
- Michelin® tires
- 10,000-lb. hitch<sup>6</sup>
- Air manifold and hose
- 4-wheel ABS



WEB  SMART STORAGE



**MAXIMUM STORAGE** Exterior storage is configurable in the main compartments between the front and rear wheels with movable panels that let you customize the space to best fit your needs. Or you can choose the available slide tray (shown here) that slides out on either side of the coach.



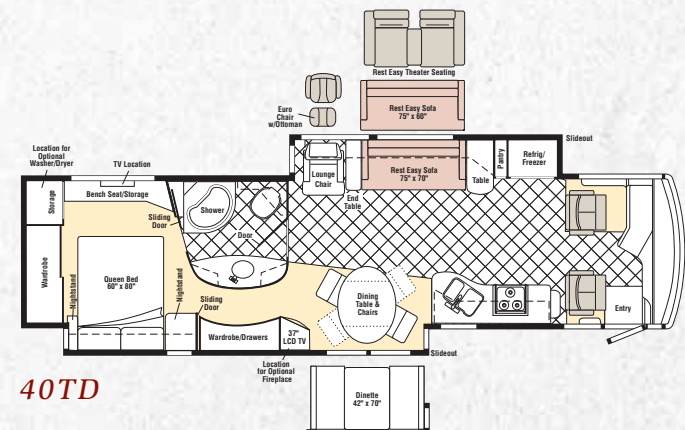
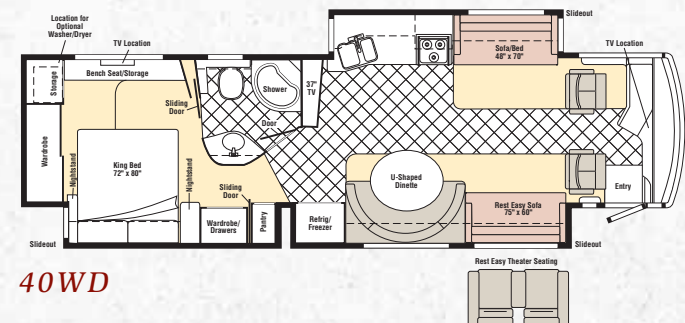
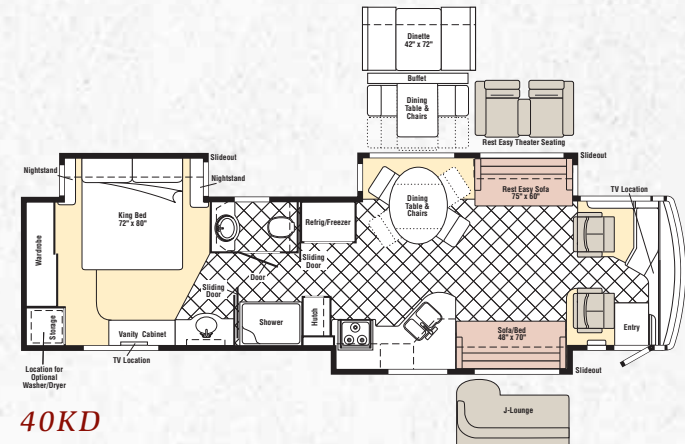
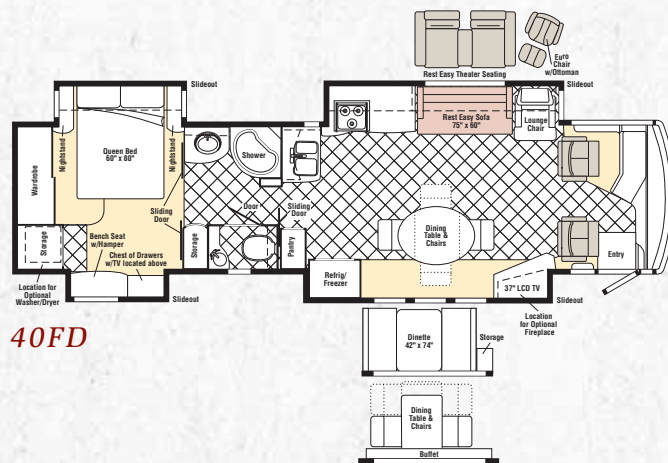
# 2009 *Tour*® Floorplans & Specifications

Dimensions shown are for sleeping space only and may vary due to styling differences. Dashed lines denote overhead storage areas. Floorplans and specifications are also available online at: [gowinnebago.com](http://gowinnebago.com)



## Weights & Measures

	40FD	40KD	40WD	40TD
Length	39'10"	39'10"	39'10"	39'10"
Exterior Height <sup>1</sup>	12'4"	12'4"	12'4"	12'4"
Exterior Width <sup>2</sup>	8'5"	8'5"	8'5"	8'5"
Exterior Storage <sup>3</sup> (cu. ft.)	220	220	205	205
Awning Length	20'	20'	15'	20'
Interior Height	7'2"	7'2"	7'2"	7'2"
Interior Width	8'	8'	8'	8'
Freshwater Capacity w/Heater <sup>4</sup> (gal.)	100	100	100	100
Holding Tank Capacity - Black/Gray <sup>4</sup> (gal.)	51/103	51/103	70/54	54/128
LP Capacity <sup>5</sup> (gal.)	30	30	30	30
Fuel Capacity (gal.)	100	100	100	100
GCWR <sup>6</sup> (lbs.)	42,350	42,350	42,350	42,350
GVWR (lbs.)	32,350	32,350	32,350	32,350
GAWR - Front (lbs.)	12,350	12,350	12,350	12,350
GAWR - Rear (lbs.)	20,000	20,000	20,000	20,000
Wheelbase	267"	267"	267"	267"





## Maxum™ Freightliner® Chassis

400-hp Cummins® turbo-charged ISL 8.9L diesel engine

Allison® 3000 MH 6-speed electronic transmission

Information display center

NeWay® front and rear suspension

160-amp. alternator

Engine compression brake

Automatic leveling jacks w/3-position controls

4-wheel ABS

Tow Power Package: 7-pin trailer wiring and I.P. wiring

Trailer Hitch<sup>6</sup>: 10,000-lb. drawbar/500-lbs. maximum vertical tongue weight and wiring

Stylized aluminum wheels

## Cab Conveniences

Cab seats w/armrests, lumbar support, multi-adjustable slide/recline/swivel

Power driver's seat pedestal

RV Radio<sup>8</sup>: AM/FM stereo, CD player w/remotes, weather band, iPod/MP3 input

Tilt/telescoping SmartWheel™

Cruise control

Power door lock

Keyless entry

Black & white rearview monitor system w/1-way audio

Powered step well cover

Powered sunvisors

Defroster fans

Driver window shade

Chassis/house battery radio power switch

Compass

Map lights

C.B. wire prep

Auxiliary start circuit

40FD	40KD	40WD	40TD	Optional Equipment
o	o	o	o	GPgo™ GPS Navigation System: requires color monitor system
o	o	o	o	10-disc CD changer w/remote
o	o	o	o	Sirius® satellite radio w/6-month paid subscription and iPod interface cable connector
o	o	o	o	Side-view camera system
o	o	o	o	Color monitor system w/rear and side cameras, 1-way audio
o	o	o	o	Passenger seat footrest
o	o	o	o	Power passenger seat pedestal

## Interior

32" LCD HDTV (40KD & 40WD, front)

37" LCD HDTV (40FD, 40WD & 40TD)

Home Theater Sound System: amplifier, CD/DVD player, receiver, 5 speakers and subwoofer

Amplified TV antenna

Video selection system

Satellite system ready

Cab wraparound curtain

Day/night pleated shades

OnePlace® systems center

Dual-glazed, thermo-insulated windows

Rest Easy® single-control multi-position lounge

40FD	40KD	40WD	40TD	Optional Equipment
o	o	o	o	Central vacuum cleaner
o	o	o	o	Washer/dryer combo
o	o	o	o	King-Dome® in-motion satellite dish, dual LNB, HD-ready (front and bedroom)
o	o	o	o	King-Dome automatic satellite dish antenna, HD-ready (front and bedroom)
o	o	o	o	Powered antenna
o	o	o	o	Electric fireplace
o	o	o	o	Rest Easy single-control multi-position lounge w/UltraLeather™
o	o	o	o	Rest Easy dual-control multi-position lounge
o	o	o	o	Rest Easy dual-control multi-position lounge w/UltraLeather

## Galley

Corian® countertops

4-door refrigerator/freezer w/icemaker

Stainless steel microwave/convection oven w/sensor cook and vented range fan

3-burner Amana® range top w/storage below

Corian range and sink covers

Filtered, cold water faucet

Mini blinds

Powered roof vent

40FD	40KD	40WD	40TD	Optional Equipment
o	o	o	o	Stainless steel refrigerator/freezer w/water and ice dispenser, auto defrost
o	o	o	o	Water filtration system

## Bedroom

26" LCD TV

Stereo System: AM/FM stereo, CD/DVD player, alarm clock, iPod/MP3 input, headphone jack

Ceiling fan

Ideal Rest™ memory foam mattress

40FD	40KD	40WD	40TD	Optional Equipment
o	o	o	o	Sleep Number® bed

## Bath

Corian countertop

Handheld showerhead

Moen Posi-Temp® shower valve

Mini blinds

Powered roof vent

## Exterior

Entertainment Center: AM/FM stereo w/CD player, remote, TV jack, radio antenna, power outlets

Electric patio awning w/wind sensor and remote

Electric entrance awning

KeyOne™ lock system

Lower front protective mask

Electric mirrors w/remote and turn signal

Lighted storage compartments

4 storage containers w/lids

7' folding step ladder

Automatic entrance steps

Ladder

Mud flaps

Stainless steel full-width mud guard

Double clear-coat

40FD	40KD	40WD	40TD	Optional Equipment
o	o	o	o	Entertainment Center: LCD TV, AM/FM stereo, CD/DVD player w/remote, iPod/MP3 input w/iPod connector, TV jack, radio antenna, power outlets
o	o	o	o	Window awnings
o	o	o	o	90" slideout storage compartment tray
			o	Patio awning w/wind sensor and remote, extends over entrance
		o		2nd patio awning w/wind sensor and remote

## Heating & Cooling System

TrueAir® residential central air conditioning w/heat pump

35,000 BTU furnace (40FD, 40KD & 40WD)

40,000 BTU furnace (40TD)

25,000 BTU secondary furnace

## Electrical System w/QuickPort®

Service Center: lighted, cable input, power cord, shoreline/generator automatic changeover switch

50-amp. superflex cord

2,000-watt inverter/charger w/remote panel

8,000-watt Cummins Onan® Quiet Diesel™ generator

4 deep-cycle, Group 31, marine/RV batteries

Battery disconnect system (coach and chassis)

PowerLine® energy management system

Automatic dual battery charge control

Shoreline/generator automatic changeover switch

Solar-panel battery charger

Chassis battery charger/maintainer

40FD	40KD	40WD	40TD	Optional Equipment
o	o	o	o	Generator automatic start system

## Plumbing System w/QuickPort & QuickConnect®

Service Center: lighted, pressurized city water hook-up w/ diverter fill, drain for fresh water, drainage valves, exterior wash station w/pump switch, glove holder, holding tank flushing system, paper towel holder, portable satellite dish hook-up, 10' sewer hose

10-gallon water heater w/motoraid

TrueLevel™ holding-tank monitoring system

Winterization Package: water-heater bypass valve and siphon tube

Full coach water filtration system

LP tank

## Safety

Seat belts

Child seat anchor (40FD & 40KD)

LP, smoke and carbon monoxide detectors

10 BC fire extinguisher

Ground fault interrupter

High-mount brake lights

## Warranty<sup>7</sup>

12-month/15,000-mile basic warranty,<sup>8</sup>

36-month/36,000-mile limited warranty on structure,<sup>8</sup>

10-year limited parts-and-labor warranty on roof skin<sup>8</sup>

- The height of each model is measured to the top of the tallest standard feature and is based on the curb weight of a typically equipped unit. The actual height of your vehicle may vary by several inches depending on chassis or equipment variations. Please contact your dealer for further information.
- Tour floorplans feature a wide-body design – over 96" In making your purchase decision, you should be aware that some states restrict access on some or all state roads to 96" in body width. Before making your purchase decision, you should confirm the road usage laws in the states of interest to you.
- The load capacity of your motor home is designated by weight, not by volume, so you cannot necessarily use all available space when loading your motor home.
- Capacities are based on measurements prior to tank installation. Slight capacity variations can result due to installation applications.
- Capacities shown are tank manufacturer's listed water capacity (W.C.). Actual filled LP capacity is 80% of listing due to overfilling prevention device on tank.
- Actual towing capacity is dependent on your particular loading and towing circumstances which includes the GVWR, GAWR, and GCWR as well as adequate trailer brakes. Please refer to the Operator's Manual of your vehicle for further towing information.
- See separate chassis warranty.
- See your dealer for complete warranty information.

o Optional  
NA Not Available

Not all items available in combination. See dealer for details.

Winnebago Industries® continuing program of product improvement makes specifications, equipment, model availability, and prices subject to change without notice. Comparisons to other motor homes are based on the most recent information available at printing.





## Built by Winnebago Industries. Built to last.

Winnebago motor homes are built by Winnebago Industries, the company that defined motor homes. The company that built its reputation on quality construction. The company that transformed the motor home concept into a way of life.



Today, Winnebago Industries brings that reputation for quality and its 50-year history of RV innovation to the design and construction of every motor home. It's all a part of SuperStructure®, our exclusive system of proprietary structural components that instills each motor home with improved strength and durability.

**Solid Foundation** Steel and aluminum truss work provides a solid, flat foundation for the floor and sidewalls. Winnebago Industries engineers also take special care to distribute the weight of components to ensure proper handling and stability.



### Interlocking Joints

The floor, sidewalls and roof are all integrally connected using interlocking joints. This creates a Tour body that acts as a cohesive unit for improved strength and durability.

**Attention to Detail** Whether it's sending every Tour through a high-pressure water tunnel to check for leaks or labeling individual wires and barcoding parts to save time and frustration during service, Winnebago Industries considers every detail to ensure your Winnebago motor home provides you with years of pleasure.

**Strong as Steel** Appliances are secured directly to embedded steel plates for added safety. Windshields are also mounted in steel with an automotive-style sealant; lesser designs use a rubber gasket to mount the windshield in fiberglass.

**E-Coating** Winnebago Industries employs an automotive-style dip tank process to apply an advanced electrodeposition coating on critical steel components for corrosion protection.

**Thermo-Panel® Sidewalls** Invented by Winnebago Industries, Thermo-Panel construction combines a fiberglass panel, high-density, block-foam insulation and aluminum support structures to create some of the most durable, lightweight sidewalls in the industry.



1-year-old Winnebago fiberglass roof



1-year-old competitor's rubber roof

**Fiberglass Roof** The Tour features a crowned, one-piece fiberglass roof, backed with a 10-year limited parts-and-labor roof skin warranty. Fiberglass offers superior strength, attractiveness and durability over the rubber roofs found on many competitive models which can chalk, streak and degrade over time. Fiberglass also provides increased puncture and tear resistance.



[gowinnebago.com](http://gowinnebago.com) Visit us on the web for more info on all of our motor homes, the latest product updates and a host of web-exclusive content.



**Take a Tour** We're proud of our process, state-of-the-art facilities and the people who make Winnebago Industries number one. We invite you to visit our complex in Forest City, Iowa, for a first-hand look at the dedication and technology behind every motor home we build.



**Recognized Quality** The Recreation Vehicle Dealer Association annually rates RV manufacturers and awards the Quality Circle award to manufacturers who provide exceptional products, service and support. Winnebago Industries is proud to be the only manufacturer to receive this award every year since its inception.



**Committed to Service** We back our motor homes with the industry's best service after the sale.

- 12-month/15,000-mile basic limited warranty
- 36-month/36,000-mile warranty on structure
- Standard 10-year limited parts-and-labor roof skin warranty
- Complimentary 24-hour roadside assistance program

- RV Technical Assistance Hotline
- Emergency Trip Interruption
- Nationwide Trip Routing
- RV Service Appointment Assistance
- Emergency Message Service
- Fee-Free Travelers Cheques



- TripSaver Fast Track Parts. TripSaver guarantees that in-stock warranty parts ship directly to your dealer within 24 hours.
- National dealer service network



**WIT Club** Winnebago owners are like family. Joining the Winnebago-Itasca Travelers is a great way to meet and travel with other Winnebago enthusiasts. Members enjoy:

- Caravans and rallies
- Local and state group activities
- RV travel benefits

For Sales and Service Information Contact:

Built proudly by



NYSE listing: WGO

Printed in USA

Seat belts are your most important hookup. Always buckle up.

© 2008 Winnebago Industries, Inc.