



Coachmen®

1996 CATALINA TRAVEL TRAILERS & FIFTH WHEELS

**CATALINA TOWABLES - ALWAYS
OUTSTANDING SELECTION AND VALUE**

**EXCITING NEW
FLOORPLANS
AND FEATURES**

**TWO-YEAR
STRUCTURAL
WARRANTY**



**FREE!
OWNER'S CLUB
MEMBERSHIP &
BENEFITS!**



CHOOSE CATALINA FOR THE

When it comes to overall quality and value there is simply no better choice than Coachmen Catalina Travel Trailers and Fifth Wheels. Thousands of families across the land have already experienced many years of enjoyment in their Catalina recreational vehicles.

Catalina towables combine the best quality, comfort and value available today. They are designed and manufactured with long term reliability and livability in mind. Many brands may be similar in appearance but most will not hold up to the scrutiny of a closer look.

Coachmen products feature definite construction and material differences that others may not offer. Differences that will affect your long term satisfaction and even resale value.

This brochure is loaded with important information that explains why Coachmen is the absolute best RV value.

BEAUTY AND A LOT MORE!

As you step into a 1996 Catalina Trailer or Fifth Wheel, your first impression is of pleasing beauty and soothing comfort.

Our designers work diligently to insure lasting appeal, because at Coachmen we believe that beauty should be "more than skin-deep."

Here are some of the differences that set Coachmen interiors apart from other brands:

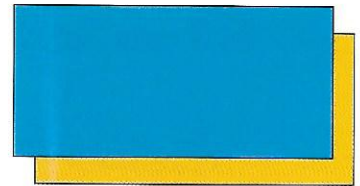
- Coachmen selects only fabrics that are wear-dated as "Heavy Duty."

This means that Coachmen fabrics have been tested for durability beyond 15,000 double rubs (in and out action) to simulate heavy usage. To put this in perspective, a chair in the average American home is typically subjected to 3,000 double rubs per year.

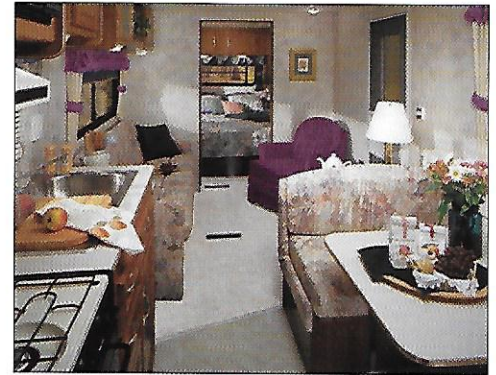
- Beneath its heavy duty fabrics, Coachmen uses high density foam in its furniture and cushions to protect against premature compression and breakdown. And, dinette cushions are backed with durable, waterproof vinyl.

The Catalina 338 Front Lounge Slide provides beautiful and spacious living. Shown here in Blue Horizon decor.





ABSOLUTE BEST RV VALUE



ABOVE: Enjoy the maximum efficiency of the 350 TB, featuring bedrooms at both the front and the rear and generous living and dining space. Pictured in Mulberry.

LEFT: Our 360 Rear Kitchen Fifth Wheel offers tremendous livability with the large slide room, panoramic windows and gourmet galley. Shown in Aspen.

- Coachmen uses only man-made continuous filament fiber carpeting that is pre-treated for stain resistance. For long term wear, the carpet padding is equally important. Coachmen uses a 3/8" pad that is 70% denser than the industry standard, with an 80 lb. ILD (Indentation Load Deflection) versus the 33 lb. ILD most commonly used.
- Unlike other brands, Coachmen's decorative cabinet insert panels are

tempered glass for added safety and durability.

- The Catalina cabinet doors feature hardwood frames in a lustrous Velvet Cherry finish. Unlike other brands that use an MDF construction, Coachmen's cabinet fronts are real laminated wood, solidly screwed and secured to reinforced sidewalls.

- Window sizes and configurations are chosen with care, to give you enormous panoramic views in the

living areas and important ventilation in the sleeping areas with multi pane jalousie windows.

- Window treatments are designed for beauty, flexibility of lighting and ventilation, and, most of all, privacy.

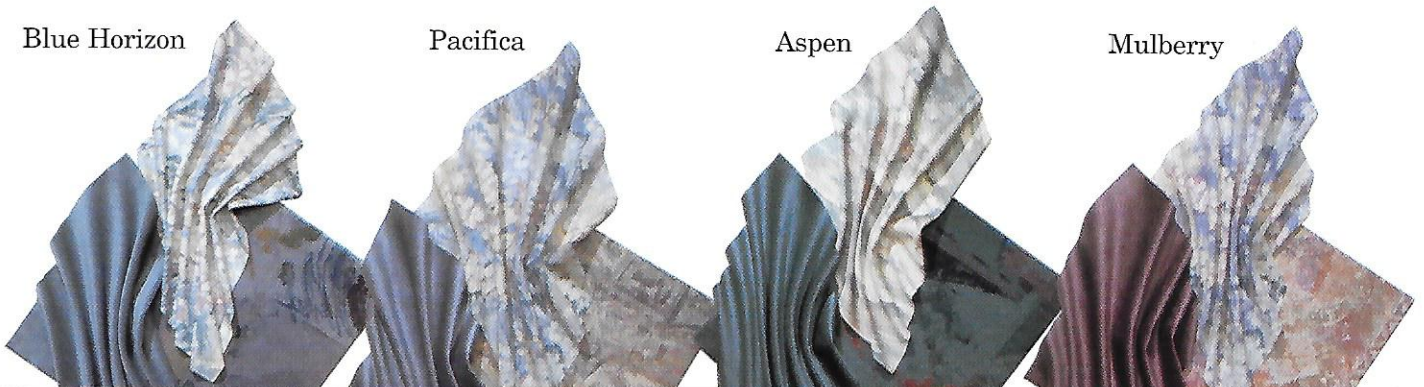
The Catalina features a non-flammable adjustable mini-blind in the galley, and laminated roller shades in the coach and bedroom for privacy.

Blue Horizon

Pacifica

Aspen

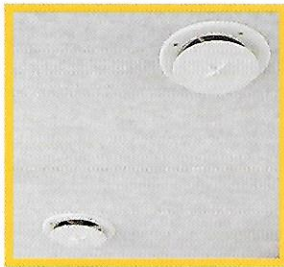
Mulberry



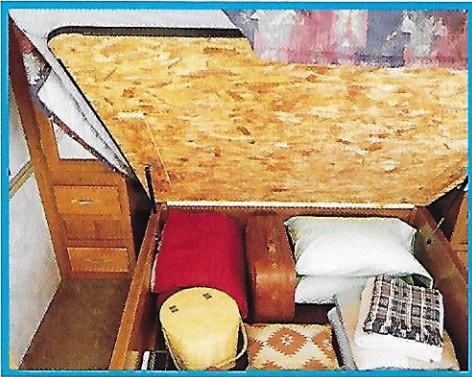
FEATURES GALORE!

A complete photo album would be required to fully display the many features and innovations of Catalina travel trailers and fifth wheels. Here are just a few of the many features available from Coachmen.

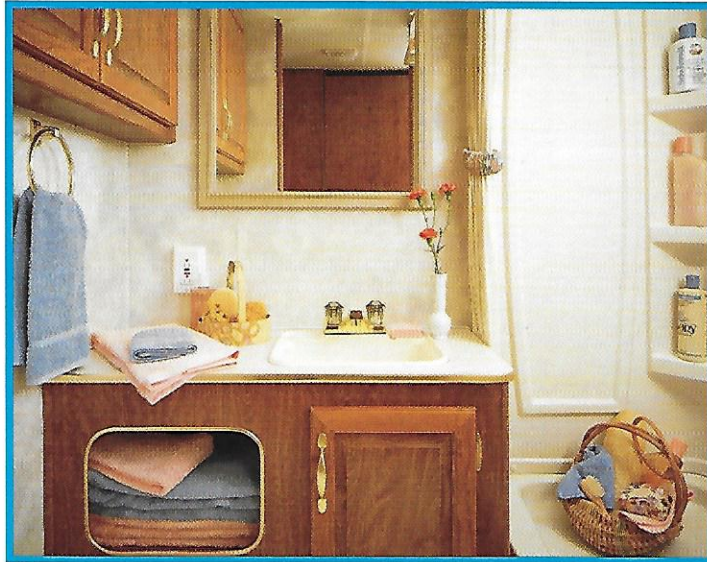
Coachmen's optional ducted roof air conditioning system is the best of its kind. Every angle, seal and vent has been carefully designed for maximum cooling with minimum condensation. ▶



Most Catalina beds are equipped with a bed-lift storage system that features hydraulic cylinder lift struts for ease of operation. ▼



Another Coachmen innovation is the fantastic under-sink silverware and utensil drawer. ▼



◀ Coachmen pays special attention to bathrooms, for adequate room around the toilet, counter space and linen storage. All models feature a molded tub/shower wall liner, double sealed to protect against water damage.



◀ Floor-ducted heat system provides balanced heat distribution. The duct system itself is sealed and insulated to avoid an inefficient loss of heat.

The optional microwave oven boasts a huge 1.3 cu.ft. interior space, making preparation of large dishes a breeze. ▼

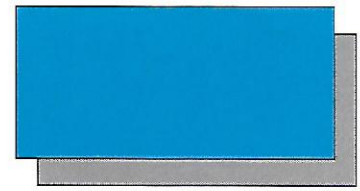


▲ Mere words cannot convey the superior operation of the Catalina's interior drawers. Previously reserved for luxury products, this metal and caster slide system is standard equipment.

The three-burner range with a high-output front burner has space for large pots and enough capacity to quickly heat the contents. ▼



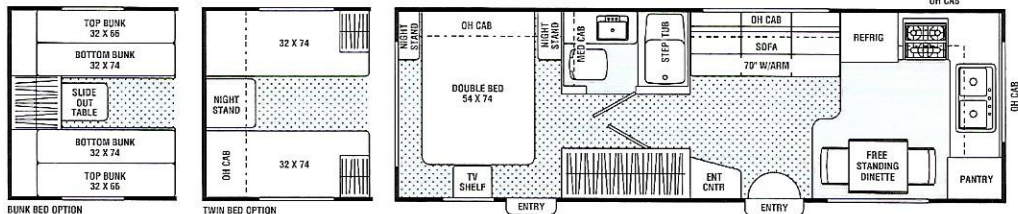
FLOORPLANS & TECHNICAL SPECIFICATIONS



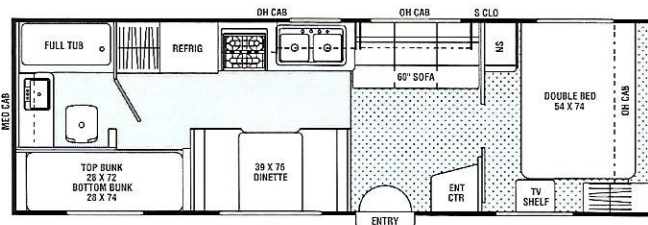
1996 CATALINA TRAVEL TRAILERS & FIFTH WHEELS

CATALINA TRAVEL TRAILER FLOORPLANS

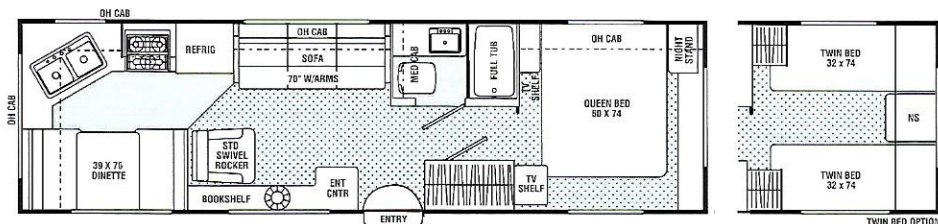
268FK FRONT KITCHEN



275TB TWO BEDROOM

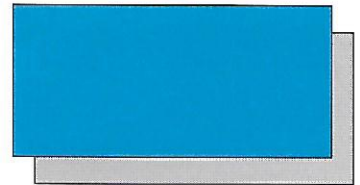


280RK REAR KITCHEN



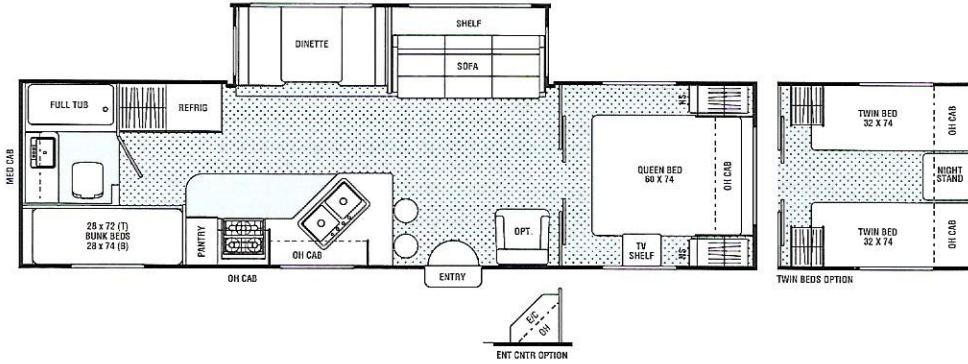
 Indicates Carpeting

CATALINA TRAVEL TRAILER FLOORPLANS



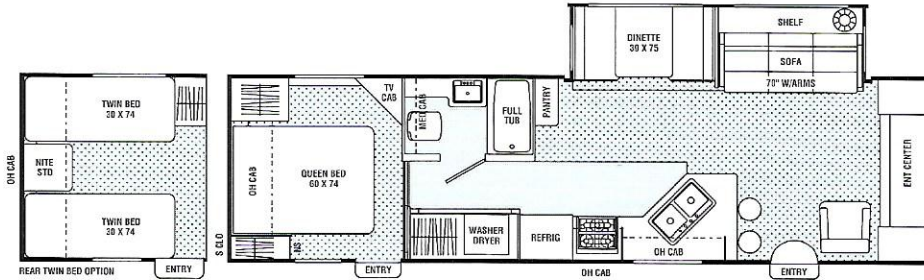
330TBS

TWO BEDROOM
SLIDE-OUT



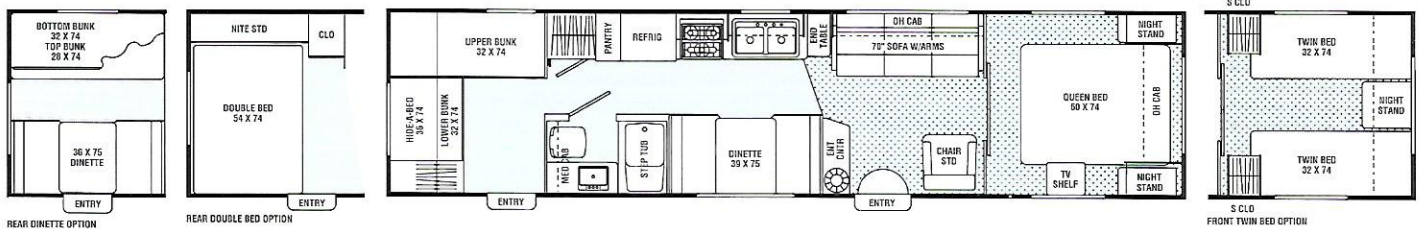
338FLS

FRONT LOUNGE
SLIDE-OUT
WIDE BODY



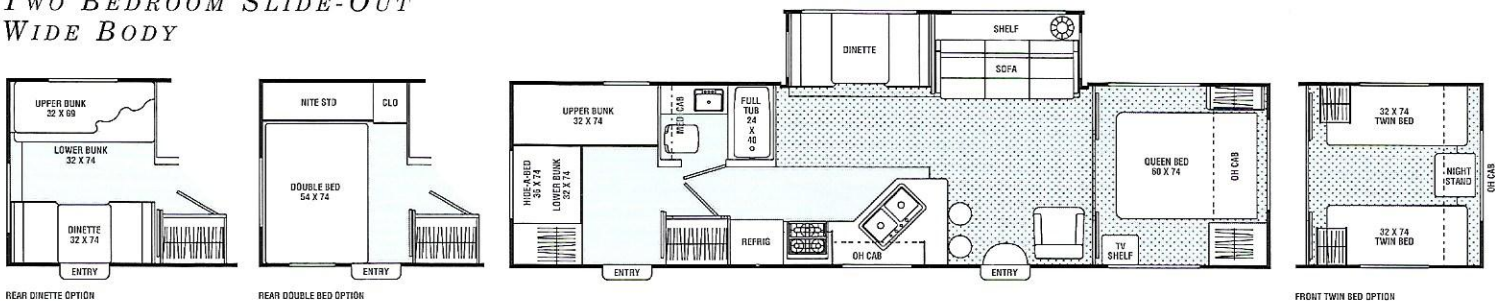
350TB

TWO BEDROOM



364TBS

TWO BEDROOM SLIDE-OUT
WIDE BODY



CATALINA TRAVEL TRAILER SPECIFICATIONS

	268 FK	275 TB	280 RK	286 FLS	298 FK	299 TB	310 WB	311 FKS	330 TBS	338 FLS	350 TB	364 TBS
UVW	4,360	4,843	4,912	6,442	4,936	5,114	5,335	7,116	7,205	7,871	5,966	8,339
GVWR	7,600	7,600	7,600	8,880	7,600	7,600	7,600	9,060	10,000	10,000	7,600	10,000
Carrying Capacity	3,240	2,757	2,688	2,438	2,664	2,486	2,265	1,944	2,795	2,129	1,634	1,661
Hitch Weight	670	710	730	880	840	760	850	1,060	1,050	1,200	920	1,100
Axle Weight	3,690	4,133	4,494	5,562	4,096	4,354	4,485	6,056	6,155	6,671	5,046	7,239
Interior Height	6'6"	6'6"	6'6"	6'10"	6'6"	6'6"	6'6"	6'10"	6'10"	6'10"	6'6"	6'10"
Exterior Height*	8'11"	8'11"	8'11"	9'9"	8'11"	8'11"	8'11"	9'9"	9'9"	9'9"	8'11"	9'9"
Exterior Length	27'1"	28'5"	30'5"	28'3"	30'5"	31'6"	32'5"	31'4"	32'10"	33'8"	35'8"	35'10"
Exterior Width	93½"	93½"	93½"	93½"	93½"	93½"	93½"	93½"	93½"	100½"	93½"	100½"
Hitch Pin Height	18½"	18½"	19"	20"	19"	19"	19"	20"	20"	20"	19"	20"
Sleeping Capacity—Std/Opt	4/6	8/6	6/6	6/4	6/8	8/8	6/6	6/6	8/6	6/6	9/10	9/8
Fresh Water Capacity (gal.)	30	30	30	36	30	30	30	30	36	36	30	36
Waste Water Capacity (gal.)	40	40	40	40	40	40	40	40	40	40	40	40
Grey Water Capacity (gal.)	30	35	36	40	35	35	30	36	36	40	30	40
Water Heater Capacity	6	6	6	6	6	6	6	6	6	6	6	6
LP Gas Capacity (lb.)	60	60	60	60	60	60	60	60	60	60	60	60
Furnace Rating (x 1000) BTU	31	31	31	31	31	31	31	35	35	35	35	40
Tire Size	■	■	■	*	■	■	■	*	◇	◇	□	◇

* Add 14" for Roof Air Conditioner

■=ST205/75R15C

*=ST225/75R15C

□=ST225/75R15B

◇=ST225/75R15D

UVW (Unloaded Vehicle Weight): The weight of the unit with no fluids, cargo, optional equipment or accessories

GVWR (Gross Vehicle Weight Rating): The maximum permissible weight of the unit, including the UVW plus all fluids, cargo, optional equipment and accessories. For safety and product performance, do not exceed the GVWR.

Carrying Capacity: The difference between the UVW and the GVWR. This is the amount of weight available for all fluids, cargo, optional equipment and accessories. The actual "loaded" weight will depend on the equipped unit and the owner's individual choice of cargo, etc.

Wider Widths: Numerous Coachmen floorplans feature the "wide body" design concept, which gives you significantly enhanced interior living space and innovative floorplans.

In making your purchase decision, you should be aware that a few states restrict access on some or all state

roads to 96" in width, though special road usage permits are generally available. Vehicles up to 102" in width are permitted on all federal highways, and in the vast majority of states. You may wish to confirm the road usage laws in the states of interest to you before making your purchase decision. If width is of concern to you, we invite you to consider the broad array of other Coachmen models offered in the standard 96" width.

All information contained in this brochure is believed to be accurate at the time of publication. However, during the model year, it may be necessary to make revisions and Coachmen reserves the right to make all such changes without notice, including changes in prices, colors, materials, equipment and specifications, as well as the addition of new models and the discontinuance of models shown in this brochure. Therefore, please consult with your Coachmen dealer and confirm the existence of any materials, design or specifications that are material to your purchase decision.

STANDARD FEATURES

INTERIOR AND DECOR

- Deluxe Velvet Fabrics
- Velvet Cherry Cabinets
- Residential Metal Drawer Glides
- Partial Carpet with Pad
- Linoleum Flooring - Kitchen
- Roller Shades - Coach
- Roller Shades - Bedroom (Except w/Bunks)
- Radius Windows
- Home Entertainment Cabinet (338 Only)
- Side Dinette (Except on 268FK)
- Free-Standing Dinette (268FK)
- Jack Knife Sofa
- Swivel Rocker (Except 268FK)
- Four Prewired Stereo Speakers
- Cable TV Jack
- TV Antenna Ready
- TV Shelf - Bedroom
- LP Leak Alarm

GALLEY

- Microwave Ready
- 3-Burner (High Output) Range with Oven
- Power/Lighted Range Hood
- Flush Mount, Double Door Refrigerator
- Monitor Panel
- Stainless Steel Sink
- Silverware Drawer

SLEEPING

- Queen Bed (280RK thru 364TBS)
- Double Bed (268FK)
- Bunk Beds (299TB, 350TB, 364TBS)
- Deluxe Innerspring Mattress-312 Coil
- Bedspread and Pillow Shams
- Bedlift System on Island DB or QB

BATH AND WATER

- Marine Toilet
- Power Bath Vent
- One-Piece ABS Tub Surround
- 6-Gallon Water Heater
- Water Heater By-Pass
- Demand Water Pump
- Decorative Bath Hardware
- Medicine Cabinet

ELECTRICAL/HEATING/AIR CONDITIONING

- Outside Receptacle GFI
- Patio Light
- Off Door Side Utility Light
- LP Light
- Double 30 LB LP Bottles w/Auto Change-Over
- 31,000 BTU E.I. Furnace (268FK thru 310WB)
- 35,000 BTU E.I. Furnace (311FKS thru 350TB)
- 40,000 BTU E.I. Furnace (364TBS)
- In-Floor Ducted Heat
- Prewired for Roof Air Conditioning

EXTERIOR/CONSTRUCTION

- One-Piece Seamless Aluminum Roof
- Rubber Roof (338FLS, 364TBS)
- Fiberglass Insulation
- Gutter Rail With Down Spouts
- Rear Hose Storage Steel Bumper
- Double Entry Step - Primary Door (268, 275, 280, 286, 298, 299, 310, 350)
- Single Entry Step - Secondary Door (Except on 280, 299)
- Triple Entry Steps at Primary Door (311FKS, 330TBS, 338FLS, 364TBS)
- Dead Bolt Lock(s)
- Secondary Entrance Door (Except 280RK, 299TB, 330, 275)

- Hydraulic Slide-Out Room (All Slide Models)
- Retractable Stabilizer Jacks (STD on 286FLS, 311FKS, 330TBS, 338FLS, 364TBS)
- Straight Axles (286FLS, 311FKS, 330TBS, 338FLS, 364TBS)
- Radial Tires
- Rally Wheels

OPTIONAL FEATURES

- Rear Double Bed (350TB, 364TBS)
- Twin Beds (Except 310WB)
- Bunk Beds (268FK, 298FK)
- Two Bar Stools (338FLS, 330TBS, 364TBS)
- Free-Standing Dinette w/4 Chairs (311, 330, 338, 364) (Includes 4 Chairs)
- Free-Standing Dinette (298FK, 310WB)
- Rear Dinette with Rear Door (350TB, 364TBS)
- Entertainment Center (330TBS)(Replaces Swvl. Rocker)
- Residential AM/FM Cassette Stereo
- Outside Entertainment Center
- Combo: Washer and Dryer (338FLS, 364TBS) (Includes Plumbing and 10 Gallon E.I. Water Heater)
- TV Antenna and Rotor Package
- Large Double Door Refer.(280RK Thru 364TBS)
- Residential Size Microwave Oven - 1.3 Cubic Foot
- Plumbing For Washer/Dryer (338FLS, 364TBS) (Includes Plumbing and 10 Gallon E.I. Gas/Elec. Water Heater)
- 6-Gallon E.I. Gas/Elec. Water Heater
- Outside Shower
- Foam Core Insulation Package (Inc. Roof) (Except in Roof When Rubber Roof Option is Ordered)
- Tinted Safety Glass - Radius Windows (Safety Glass is Mandatory in Certain States)
- Ducted Roof Air Conditioning
- 13,500 BTU Roof Air Conditioner (Not Available w/ Ducted Roof A/C)
- 2nd 13,500 BTU Roof Air Conditioner (310WB & Up)
- Wire and Frame 2nd Air Conditioner (310 and Up) (Mandatory w/Ducted Roof A/C on 338FLS, 350TB & 364TBS)
- 50 Amp. Service (311FKS, 338FLS, 364TBS)
- LP Bottle Cover
- Power Hitch Jack (280RK thru 364TBS)
- Spare Tire Kit (268FK Thru 310WB)
- Spare Tire Kit (311FKS thru 364TBS)
- Retractable Stabilizer Jacks (STD on 286,311,330,338,364) (STD on, 311FKS, 338FLS, 364TBS)
- Straight Axle (STD on 286, 311, 330, 338, 364)
- Rubber Roof (STD on 338FLS, 364TBS)
- Awning (Not Available on Wide-Body Units Shipped to Canada)
- Slide-Out Room Awning (All Slide Models)
- California Code (310WB and UP) (Includes 30 Amp Power Center With A/C Selector Switch Mandatory in CA w/2nd A/C Option)
- CSA Uplift

CATALINA FIFTH WHEEL FLOORPLANS

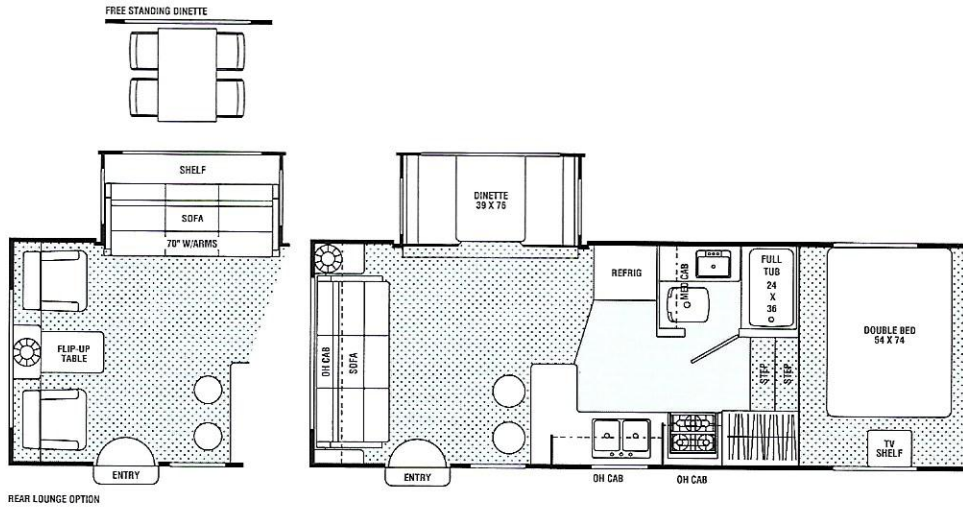
220RB

REAR BATH



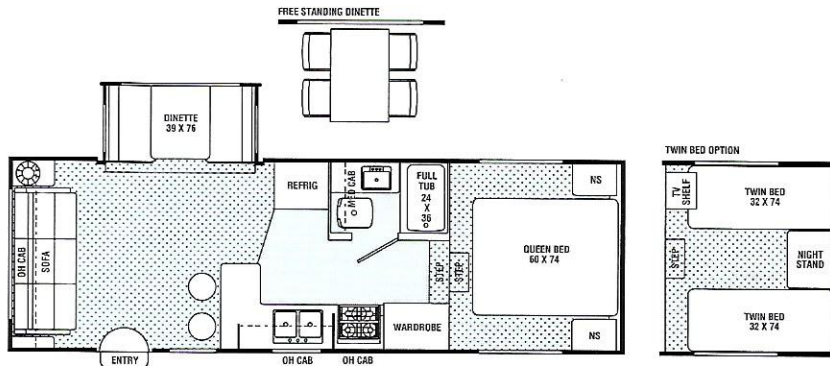
237RL

REAR LOUNGE
WIDE BODY



269RLHP

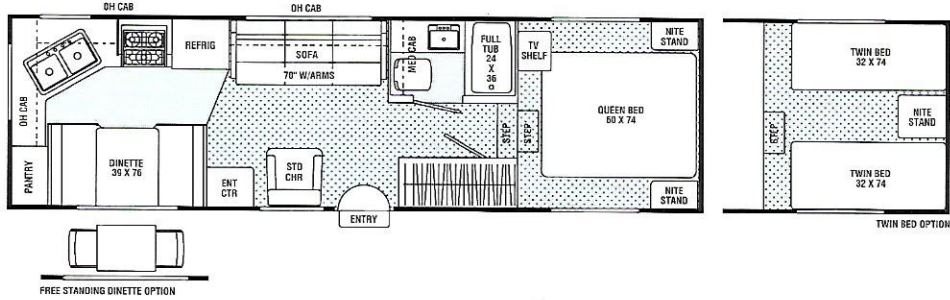
REAR LOUNGE
MID PROFILE
WIDE BODY



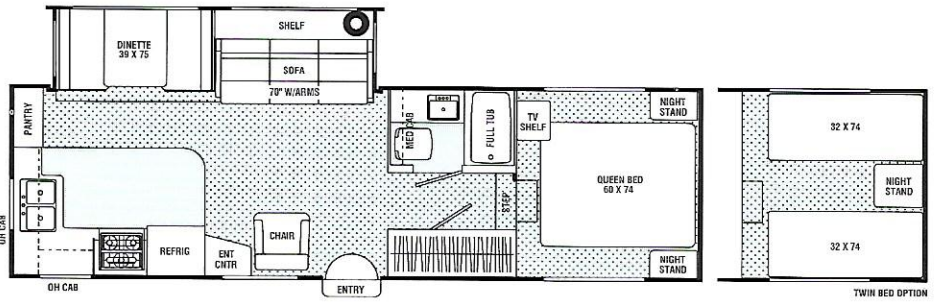
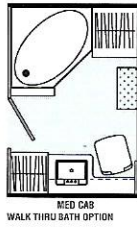
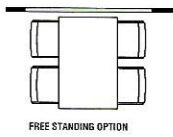
 Indicates Carpeting

CATALINA FIFTH WHEEL FLOORPLANS

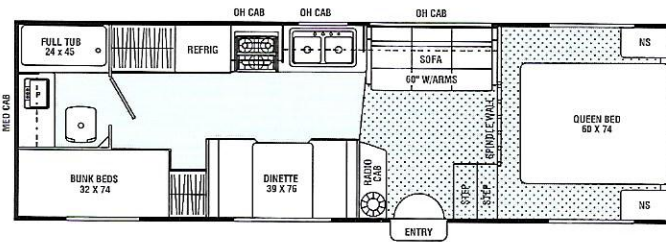
275RK REAR KITCHEN



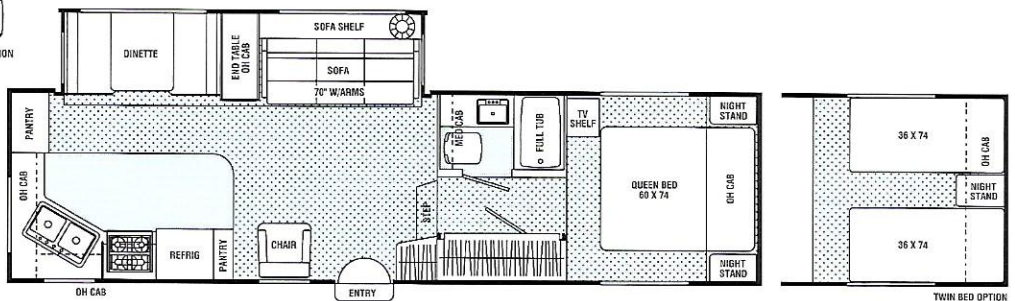
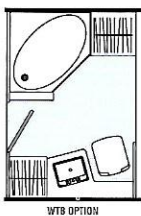
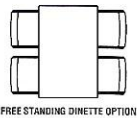
278RK REAR KITCHEN



279TB TWO BEDROOM WIDE BODY



285RKHP REAR KITCHEN HIGH PROFILE



 Indicates Carpeting

CATALINA FIFTH WHEEL SPECIFICATIONS

	220 RB	237 RL	269 RL	275 RK	278 RK	279 TB	285 RK	315 RL	360 RK	370 RL
UVW	5,158	5,847	6,287	5,712	7,170	5,814	8,100	8,825	9,943	9,437
GVWR	6,590	6,960	9,240	8,070	9,320	8,280	9,580	13,900	13,970	13,870
Carrying Capacity	1,432	1,113	2,953	2,358	2,150	2,466	1,480	5,075	4,027	4,433
Hitch Weight	990	1,040	1,240	1,070	1,320	1,280	1,580	1,900	1,970	1,870
Axle Weight	4,168	4,807	5,047	4,642	5,850	4,535	6,520	6,925	7,973	7,567
Interior Height	6'10"	6'10"	6'10"	6'10"	6'10"	6'10"	6'10"	6'10"	6'10"	6'10"
Exterior Height*	9'10"	9'10"	10'9"	10'9"	10'9"	10'9"	12'2"	12'2"	12'2"	12'2"
Exterior Length	22'2"	23'7"	26'10"	27'11"	27'9"	27'8"	29'11"	33'0"	36'10"	36'10"
Exterior Width	93½"	100½"	100½"	93½"	93½"	100½"	93½"	93½"	93½"	93½"
Hitch Pin Height	45"	45"	45"	45"	45"	45"	45"	45"	45"	45"
Sleeping Capacity	6/4	6/4	6/4	6/4	6/4	6	6/4	6/4	6/4	6/4
Fresh Water Capacity (gal.)	26	36	30	30	42	42	45	45	45	45
Waste Water Capacity (gal.)	25	40	40	40	40	40	48	48	48	48
Grey Water Capacity (gal.)	31	40	40	40	40	40	48	48	48	48
Water Heater Capacity	6	6	6	6	6	6	6	6	6	6
LP Gas Capacity (lb.)	60	60	60	60	60	60	60	60	60	60
Furnace Rating (x 1000) BTU	25	25	25	31	31	31	31	40	40	40
Tire Size	△	△	○	○	●	●	●	□	□	□

* Add 10" for Roof Air Conditioner △=ST205/75R15B ●=ST225/75R15C ○=ST205/175R15C □=LT245/75R16E

UVW (Unloaded Vehicle Weight): The weight of the unit with no fluids, cargo, optional equipment or accessories.

GVWR (Gross Vehicle Weight Rating): The maximum permissible weight of the unit, including the UVW plus all fluids, cargo, optional equipment and accessories. For safety and product performance, do not exceed the GVWR.

Carrying Capacity: The difference between the UVW and the GVWR. This is the amount of weight available for all fluids, cargo, optional equipment and accessories. The actual "loaded" weight will depend on the equipped unit and the owner's individual choice of cargo, etc.

Wider Widths: Numerous Coachmen floorplans feature the "wide body" design concept, which gives you significantly enhanced interior living space and innovative floorplans.

In making your purchase decision, you should be aware that a few states restrict access on some or all state

roads to 96" in width, though special road usage permits are generally available. Vehicles up to 102" in width are permitted on all federal highways, and in the vast majority of states. You may wish to confirm the road usage laws in the states of interest to you before making your purchase decision. If width is of concern to you, we invite you to consider the broad array of other Coachmen models offered in the standard 96" width.

All information contained in this brochure is believed to be accurate at the time of publication. However, during the model year, it may be necessary to make revisions and Coachmen reserves the right to make all such changes without notice, including changes in prices, colors, materials, equipment and specifications, as well as the addition of new models and the discontinuance of models shown in this brochure. Therefore, please consult with your Coachmen dealer and confirm the existence of any materials, design or specifications that are material to your purchase decision.

STANDARD FEATURES

INTERIOR AND DECOR

- Deluxe Velvet Fabrics
- Velvet Cherry Cabinets
- Residential Metal Drawer Glides
- Carpet with Pad - Living Room
- Carpet - Bedroom (w/Pad on 278 & Larger)
- Roller Shades - Coach
- Roller Shades - Bedroom
- Linoleum Flooring - Kitchen
- Mini Blind - Kitchen
- Radius Windows
- Side Dinette
- Jack Knife Sofa
- Swivel Rocker (275,278,285,315,360,370)
- Rear Lounge (315RL, 370RL)
- Four Prewired Stereo Speakers
- Cable TV Jack
- TV Antenna Ready
- TV Shelf - Bedroom (Except on 220RB)
- LP Leak Alarm
- Trash Can (285 & Larger)

GALLEY

- Microwave Ready
- 3-Burner (High Output) Range with Oven
- Power/Lighted Range Hood
- Flush Mount, Double Door Refrigerator
- Monitor Panel
- Stainless Steel Sink
- Silverware Drawer

SLEEPING

- Queen Bed (269RL thru 370RL)
- Double Bed (220RB, 237RL)
- Deluxe Innerspring Mattress - 312 Coil
- Bedspread and Pillow Shams
- Bedlift System on Island DB or QB

ELECTRICAL / HEATING / AC

- 30-Amp. Power Cord
- GFI Circuit

- Outside Receptacle GFI
- Patio Light
- Off-Door-Side Utility Light
- Hitch Light
- Double 30 LB LP Bottles w/Auto Change-Over
- 25,000 BTU E.I. Furnace (220RB - 237RL)
- 31,000 BTU E.I. Furnace (269RL - 285RK)
- 40,000 BTU E.I. Furnace (315RL - 370RL)
- In-Floor Ducted Heat
- Prewired for Roof AC

BATH AND WATER

- Marine Toilet
- Power Bath Vent
- 6-Gallon Water Heater
- Water Heater By-Pass
- One-Piece ABS Tub Surround
- Demand Water Pump
- Decorative Bath Hardware
- Medicine Cabinet

EXTERIOR / CONSTRUCTION

- Rubber Roof
- Fiberglass Insulation
- Awning Rail w/Down Spouts
- Triple Entry Step - Primary Door
- Dead Bolt Lock(s)
- Rear Hose Storage Steel Bumper
- Manual Slide Room (220RB, 237RL, 269RL)
- Prewired for Electric Slide Room
- Hydraulic Slide Room (Except on 220RB, 237RL, 269RL)
- Retractable Stabilizer Jacks (Opt. on 275RK)
- Wide-Body (237RL, 269RL, 279TB)
- Radial Tires
- Rally Wheels

OPTIONAL FEATURES

- Twin Beds (269RL thru 360RK)
- Two Bar Stools (237,269,315, 370)
- Free Standing Dinette w/2 Chairs (275RK)
- Free Standing Dinette w/4 Chairs (Except 275RK, 279TB)
- Rear Lounge (237RL) (Includes Two Swivel Rockers and a Jack Knife Sofa)
- Deluxe Sofa w/Hide-A-Bed (285RK, 360RK)
- Wall Hugger Recliner (285, 315, 360, & 370)
- 2nd Wall Hugger Recliner (315RL, 370RL)
- Residential AM/FM Cassette Stereo
- Outside Entertainment Center (Except on 220RB)
- Combo Washer/Dryer (315RL, 360RK & 370RL) (Includes Plumbing and 10 Gallon E.I. Water Heater) (Requires 50 Amp. Service in California)
- TV Antenna and Rotor Package
- Phone Jack (285RK thru 370RL)
- Large, Flush Mount, Double Door Refer (275RK - 370RL)
- Residential Size Microwave Oven - 1.3 Cubic Foot
- Plumbing For Washer and Dryer (315, 360, 370) (Includes 10 Gallon E.I. Water Heater) (Requires 50 Amp. Service in California)
- 6-Gallon E.I. Gas/Elec. Water Heater
- Walk Thru Bath (278RK, 285RK)
- Garden Tub (370RL)
- Outside Shower (Except on 220RB)
- Foam Core Insulation Package
- Tinted Safety Glass - Radius Windows (Safety Glass is Mandatory in Certain States)
- Ducted Roof Air Conditioning (275RK thru 370RL)
- 13,500 BTU Roof Air Conditioner (Not Available w/ Ducted A/C)
- Second 13,500 BTU Roof Air Conditioner (275RK & Up) (Requires 50 Amp. Service in California)
- Wire and Frame for 2nd AC (275RK & Up) (Requires 50 Amp. Service in California) (Mandatory w/Ducted Roof A/C on 360RK & 370RL)
- 50 Amp. Service (285,315,360,370) (Mandatory in California)
- Electric Slide-Out Room (220RB, 237RL, 269RL)
- Electric Front Jacks
- Spare Tire Kit (220RB - 237RL)
- Spare Tire Kit (269RL - 285RK)
- Spare Tire Kit (315RL - 370RL) (16" Wheels)
- Luggage Rack and Ladder
- Retractable Stabilizer Jacks (275RK, 279TB) (Std w/Slide-Outs)
- Shock Absorbers (Except on 220RB, 237RL)
- Awning (Not Available on Wide-Body Units Shipped to Canada)
- Slide-Out Room Awning (220RB, 237RL, 269RL)
- Slide-Out Room Awning (278,285,315,360,370)
- CSA Ufit



Coachmen Recreational Vehicle Company • P.O. Box 30, Middlebury, IN 46540

© 1995 Coachmen Recreational Vehicle Company Litho in U.S.A. 5M196

WHAT YOU CAN'T SEE USUALLY COUNTS THE MOST.

Coachmen believes its owners are entitled to quality and sturdy construction even if it's hidden from view. Hidden quality does cost more, and the uneducated buyer may not always understand the difference. But, those differences can be critical to long-term satisfaction and future resale value.

"Hidden" quality features from Coachmen include:

• All Copper L.P. Lines

Most brands use copper at the appliances, then switch to a much less expensive black steel pipe under the floor.

Coachmen uses copper tubing for its entire L.P. gas system, inside and outside the coach. Further, the copper tubing is mechanically double-flared at the fittings, to provide a stronger, 2-ply seal. Under the coach, care is taken to run the copper lines encased in a plastic sleeve



through the frame, so they are protected from potential road damage.

• Superior Undercarriage

To protect the underside of the unit from road damage and the elements, Coachmen first applies automotive undercoating to the wheel wells, then installs Darco, a rugged fiber-laminated polypropylene material, along the undercarriage. Darco has the highest puncture and solvent resistance, and passes the surface burn requirements of F.M.V.S.S. #302. Don't be fooled by less-expensive, look-alike materials used by other brands, which offer inferior protection.

• Seamless Exterior Metal

Exterior seams lead to leaks and structural damage. Coachmen products have no seams in the exterior metal, even though "patching" shorter pieces together would be less expensive.

Beneath our exterior metal is high quality #2 Grade North American

lumber, with roofs and sidewalls on 16" centers.

• Structurwood® Floor

Consistent with residential construction, Coachmen uses Structurwood for its flooring, which has been proven to be 10% stronger, and resists water absorption far better than plywood.

• Box Channel Steel Frame

Coachmen uses a heavy-gauge cambered "Box" steel frame with cross-members on 48" centers. The entire frame is primed and painted with two



rust inhibiting coats of paint.

Some brands use a Box channel on the visible parts of the frame, then switch to the weaker and less expensive "C" channel for the hidden undercarriage.

• Insulation

Coachmen towable products feature Owens-Corning spun fiberglass insulation. Its R-7 rating is 40% greater than many competitors. Each piece of insulation is carefully measured, and packed into every crevice by hand, then mechanically secured. This costly process insures insulation protection that does not shift downward with vibration.

Be sure to check out these and other hidden quality features, to ensure your long-term pleasure and peace of mind.



BUYER'S CHECKLIST

To help you make an informed purchase decision you'll enjoy for many years to come, refer to this list of Coachmen features. Please compare us to the competition!

- ✓ Hydraulic Slide Room System on all double and super slides
- ✓ Seamless exterior metal
- ✓ Box-channel cambered steel frame, primed and painted with two coats
- ✓ Darco undercarriage shield
- ✓ Wheel-well undercoating
- ✓ Copper L.P. lines; entire system
- ✓ Crowned, seamless roof for water protection
- ✓ Roof rain gutters and down spouts
- ✓ Owens-Corning R-7 insulation, hand cut and packed
- ✓ 2"x2" North American #2 grade wall studs, on 16" centers
- ✓ 2"x 6" door headers with 2"x 4" door jambs
- ✓ Electrical wiring routed through studs and protective metal sleeves
- ✓ Finished and sealed exterior storage compartments
- ✓ Heavy-duty, stain resistant upholstery
- ✓ Stain-repellent carpet and superior padding
- ✓ Optimum window design; sliders and jalousies
- ✓ Wood door frame/cabinet construction
- ✓ Residential drawer glide system
- ✓ Silverware and utensil drawer
- ✓ Tub/shower liner
- ✓ Bed lift system
- ✓ Extensive 12V and 110V lighting
- ✓ Deluxe 312 coil innerspring mattress
- ✓ Two-Year Structural Warranty

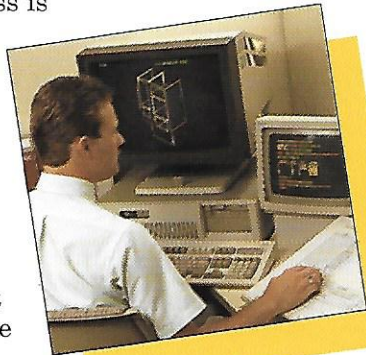
UP-FRONT DESIGN FOR LONG TERM COMFORT.

Founded in 1964, Coachmen is one of the oldest, continuous producing manufacturers of recreational vehicles. A secret of our success is our commitment to the continuous improvement of our products.

With over three decades of experience, we have learned that quality must be designed and built *in to* the products, up front. Combining our experience with the latest technological advances, we are able to prevent problems before they arise, through proper analysis and testing. Coachmen goes the extra mile to provide our customers with quality products.

DESIGN & ANALYSIS

It is now fairly common for companies to use C.A.D. as a drafting tool. Coachmen, however, takes computer-



ized technology far beyond elementary applications.

Through significant capital and manpower investments, Coachmen uses computers to see that everything fits—up front—so we can minimize gimp, trims and other “cover-up” techniques seen so often in other brands.

We also use the computer for advance testing made possible by technology programming. **Weight testing** is performed on every new model. Before a floorplan is approved for production, we know the approximate weights, including dry and loaded, front and rear axle weights and even side-to-side weights which affect towability. After a model is built, the computer analysis is manually verified.

Another important use of the computer is Coachmen’s unique utilization of **Finite Element Analysis**. This technique, based on computer modeling, enables Coachmen to predict, and avoid, many problems caused by inappropriate stress. Examples of analysis and proof of validity include our cambered frame and cross-member design, the thickness and composition of our flooring and our slide rooms and their impact on the structural integrity of the entire coach.

With this investment in technology, we try to anticipate and solve problems before they occur.

LEAK PREVENTION

Due to the complexity of the product, compounded by road vibration, water leaks can be a problem. Coachmen’s quest is to eliminate this frustrating and potentially damaging problem.

Our outer skins are seamless, and every corner—at the roof, floor and sidewalls—is wrapped, sealed and

secured. All roof and sidewall openings receive framing reinforcement, and are sealed with a non-shrinking, pliable silicone.



Finally, every unit we produce is tested for leaks in a high-pressure rain chamber, designed to simulate a driving rain, not just a spring shower.

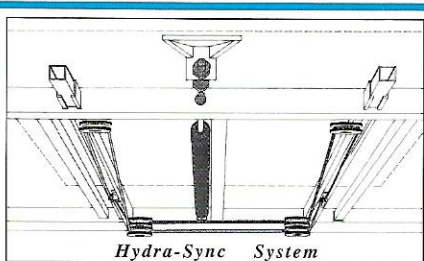
PERFORMANCE TESTING



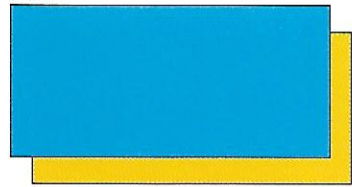
Coachmen does not want, nor expect, our customers to be the “proving ground.” We believe it is our job to adequately test our products, before they reach our customers.

Coachmen subjects its new models to a myriad of advance tests, before introduction to the customer. Rigorous road tests, sometimes up to 15,000 simulated miles, are performed on actual production units, to verify computer modeling. Studies are made of structural integrity, stress analysis, cabinetry durability, weight loading, vibration analysis and handling.

There can be little doubt that Coachmen has superior quality—by design.



All Coachmen Double and Super Size Slide out rooms feature reliable and powerful hydraulic systems. The Hydra-Sync system from Dewald Manufacturing, Inc. utilizes a single hydraulic cylinder powered by an electric motor. The system also uses strong cables that keep the room traveling in synchronization. The system offers more power to move large slide rooms and also provides for tight and positive seals.



A WARRANTY TO COUNT ON.

BUCKSTOPPER WARRANTY

We work very hard to see that our products out-perform your expectations. But, should something go wrong with the workmanship or materials during the warranty period, we will fix it. As the saying goes, the buck stops here.

Your Owner's Registration Card and our famous Buckstopper Warranty are your passport to worry-free travel. Throughout the United States and Canada, our network of over 300 independent dealers stands ready to provide you with courteous, dependable service.



TWO-YEAR STRUCTURAL WARRANTY

We are very confident about our products, for reasons explained in this brochure. Our owners share in our confidence, with Coachmen's exclusive TWO-YEAR LIMITED STRUCTURAL WARRANTY. Only with Coachmen do you receive extended peace of mind and warranty coverage

for your floor, ceiling assembly and any laminated structural components.

TRANSFERABLE WARRANTY

Your Buckstopper Warranty may be transferred to a subsequent owner for a small registration fee, if you sell your coach during the term of your one-year Buckstopper Warranty. This feature greatly enhances the resale value of your Coachmen product. (Sorry, the Extended Limited Structural Warranty may not be transferred.)

When making your purchase decision, you should select a company you can count on, with a warranty you can depend on. **Nobody protects you better than Coachmen...for the long haul!**

See your Coachmen dealer for complete details on our generous warranty program.

FRIENDS & FUN FOR LIFE.

Your purchase of a Coachmen recreational vehicle qualifies you for a **free, one-year membership** in the International Coachmen Caravan, one of the nation's largest RV clubs. Consisting of over 10,000 member families, the Coachmen Caravan was

formed in 1966 to help our owners enjoy RV ownership to the fullest.

With Coachmen, unlimited opportunities exist for you and your family to form lifelong friendships; improve and share your unique talents, skills and crafts; be active in running your

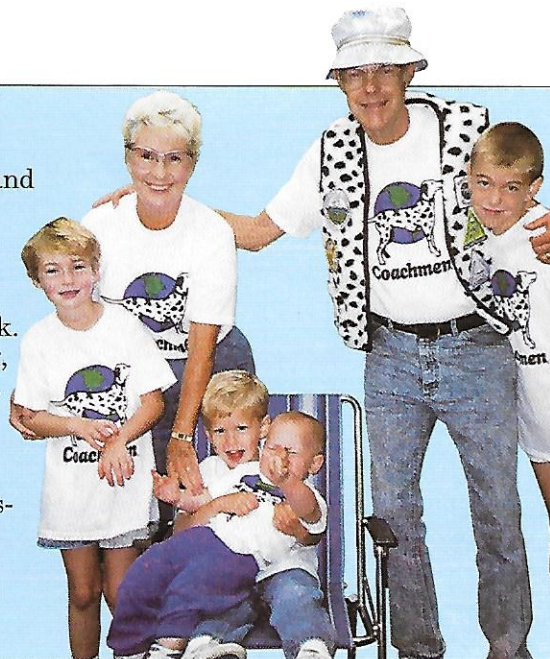
club; and exchange ideas, information and helpful hints—all these, plus the many benefits outlined below, are uniquely yours through the International Coachmen Caravan.

INCREDIBLE MEMBERSHIP BENEFITS!

In addition to automatically expanding your circle of friends, your Caravan membership brings you a multitude of benefits:

- Free \$5,000 Accidental Death and Dismemberment Insurance policy, with additional policies available for \$5 a year.
- Emergency road service and RV insurance at low rates.
- Free trip-planning service.
- 10% Discounts at over 2,500 campgrounds in the U.S. and Canada.
- Free annual Campground Directory.
- Hassle-free group travel to popular destinations.

- Free lost-key return service.
- Organized campouts, meetings and parties.
- Free subscription to COACHMEN CAPERS, the club's quarterly magazine.
- Annual International Rally Week.
- Free I.D. card, Caravan key ring, vehicle decals and I.D. numbers.
- A Coachmen Caravan MasterCard with no annual fee and low interest.
- Discounts on club clothing, accessories, film developing and selected RV publications.



COACHMEN: LEADER TO THE GREAT OUTDOORS.

Coachmen Recreational Vehicle Company has manufacturing facilities in Middlebury, Indiana, and Fitzgerald, Georgia, and occupies over 600,000 square feet on nearly 120 acres. The Coachmen name is one of the most recognized names in our industry, and our products provide recreational enjoyment throughout North America and Europe.

From our beginning in 1964, we have been, "Dedicated to the Enrichment of Your Life." You will find proof of this dedication in our innovative and user-friendly products and our smorgasbord of customer benefits and services.

We are driven by a deep concern for your safety, comfort, pride of ownership and pleasure—in short, **your satisfaction.**

Coachmen knows what it takes to make an RV great. Join us! We'll lead the way to the great outdoors.



Come visit us at our Georgia facility (above right), or our Complex in Indiana (top) where you can relax at our Visitor's Center (above left) and enjoy guided tours of the assembly plants.

MEET PETE THE COACHMEN DALMATIAN.

Pete, the Dalmatian, has been a vital part of Coachmen since 1964, when he joined our newly formed company as watchdog, playmate and friend.

Pete became our official mascot when we learned that, coincidentally, the

Dalmatian is the official "coach dog."

Since then, Pete has guided Coachmen and America to the best in products, quality and customer satisfaction.

Follow Pete to the Great Outdoors.



P.O. Box 30, Middlebury, IN 46540 • P.O. Box 948, Fitzgerald, GA 31750

