

Intruder

Intruder



Intruder

Intruder

Intruder

Intruder Class A • By Damon Corporation

Intruder

Intruder

Intruder

Intruder

Intruder

Intruder.

Explore the possibilities.



Finding a Class A motorhome that provides outstanding quality at a reasonable price is no small feat.

But now there's the Intruder from Damon Corporation. It brings with it an exceptional design. Superb styling. An impressive array of standard features.

Step aboard the Intruder to fully appreciate each intricately detailed floor plan. See the spacious cockpit, featuring panoramic windshield, contoured dashboard and cozy captain's chairs. Marvel at the galley with its three-burner, high-output cooktop, microwave oven, flush-door refrigerator, and double-bowl porcelain sink. There's also an easy-to-use wall-mounted dinette table.

The elegantly appointed bedroom has a queen-size bed with coordinated bedspread, headboard, and valances. Cedar-lined wardrobe closet with mirrored front. And the bathroom includes a gold-trimmed shower and extra-large mirrored medicine cabinet. Amenities that guarantee comfort and convenience on the road.

However, safety has not taken a back-seat to enjoyment. Up front, there are full-remote, bus-style rear view mirrors carefully designed to eliminate blind

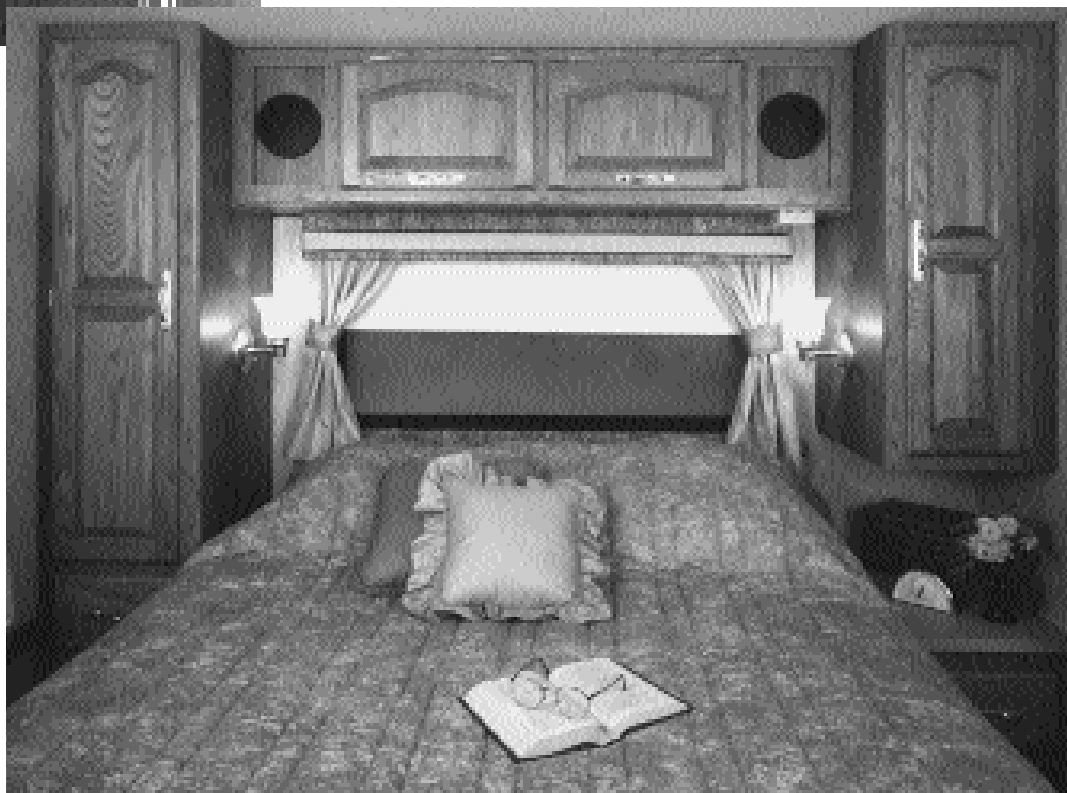
spots and improve overall maneuverability. Automatic transmission, power steering, cruise control, and tilt-steering wheel are all standard.

Built For The Long Haul

No doubt, looks can be deceiving when it comes to quality. That's why we invite you to explore the Intruder's strong, steel-framed floor construction, mounted firmly on a selection of Ford or Chevrolet chassis. Moreover, the sidewalls are constructed of aluminum-framed laminated fiberglass. This extremely durable material, combined with Damon's unique vacuum-bonding process, ensures a smoother, longer-lasting hardwall surface with greater structural stability and adhesion.

Storage capacity seems almost endless. A full-basement platform provides up to 166 cubic feet of pass-through space. Overall exterior storage is plentiful and the capacity of the heated holding tanks generous.

Intruder Class A Motorhome. Your search for comfort, style and quality is finally over. But it won't come to you. Find it at your nearest dealer and invite it in for superior recreation and family fun.

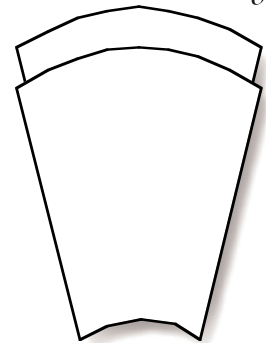
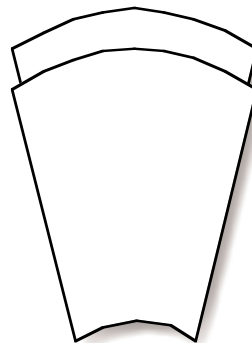
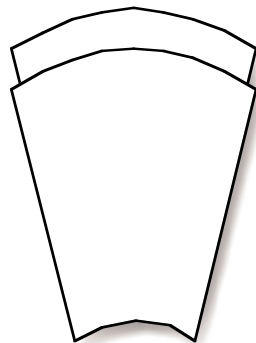




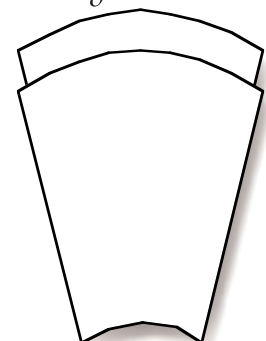
Gibraltar Green

Sierra Sand

Savannah Sage



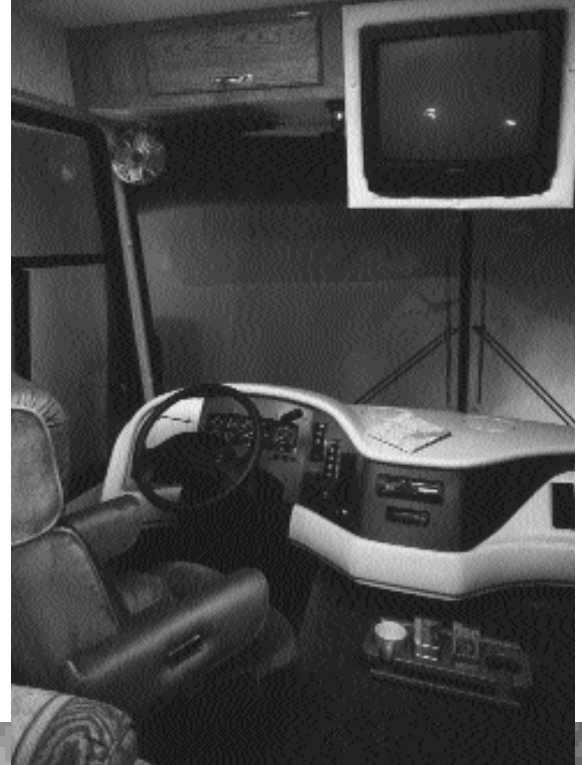
Bayou Blue



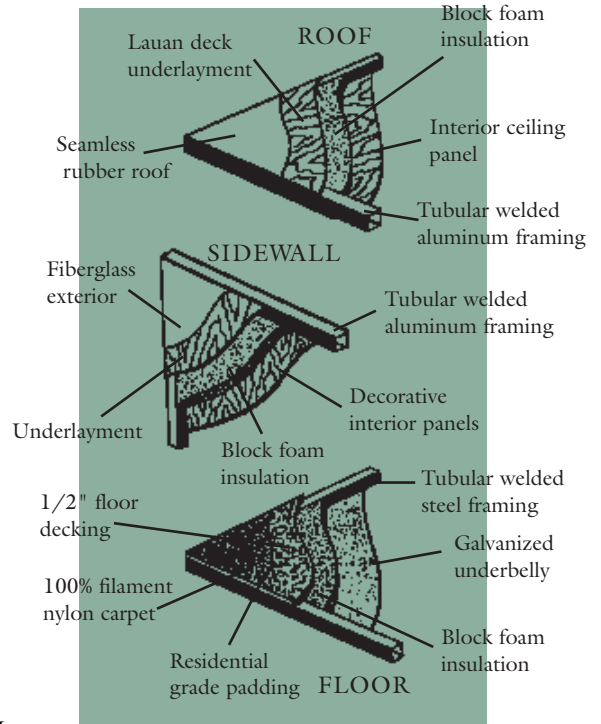
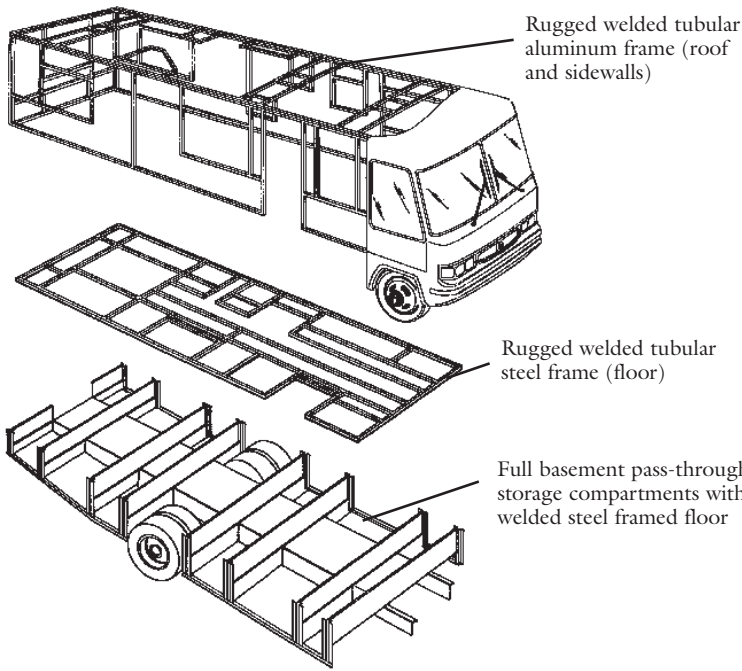
(Far upper left) Indulge in the luxurious master bedroom with queen-size bed and matching headboard, bedspread and valances, plus soft lighting and warm, rich cabinets. (Far lower left) Start or end the day right with the space-efficient bathroom, gold-accented shower and mirrored cabinet, set off by pretty patterned wallboard. (Above) Good food and good times are a given in the Intruder, with comfortable couches and padded table benches in the efficient kitchen. Shown here is Model 345 with Savannah Sage decor package. (Left) The Intruder's pantry packs plenty of provisions in a small space.

Intruder

(Below) Drive into adventure in the Intruder's plush cockpit and living area. Handsome cabinets make storage easy and attractive.
(Right) A panoramic windshield surrounds the super plush captain's chairs to make driving a safe and secure pleasure.

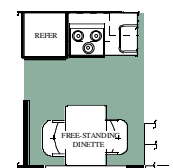
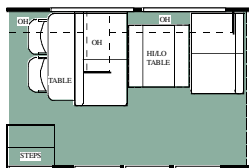
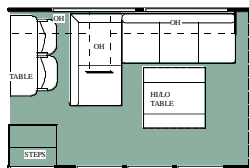
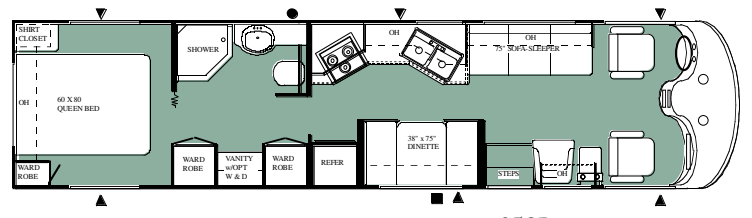
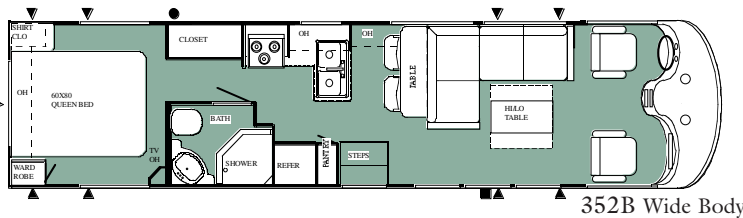
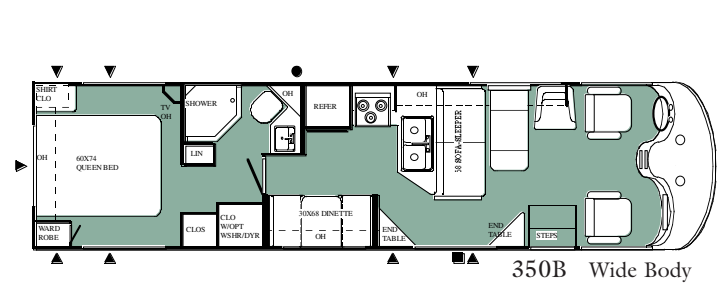
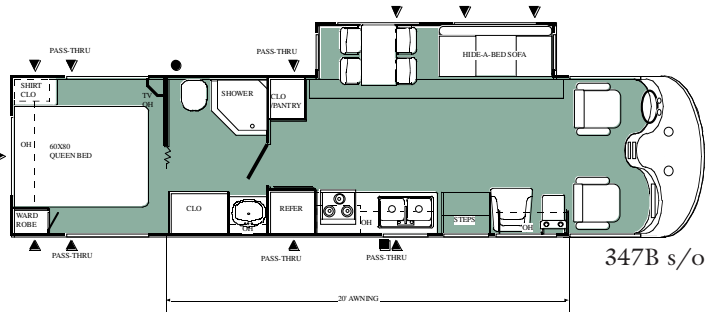
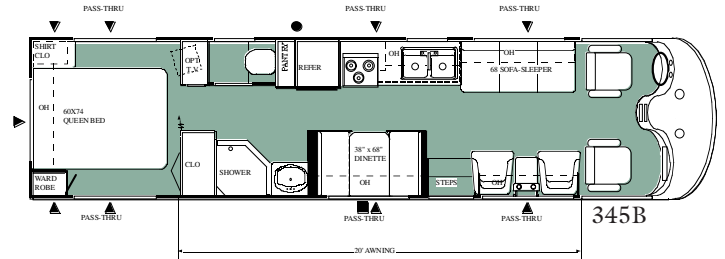
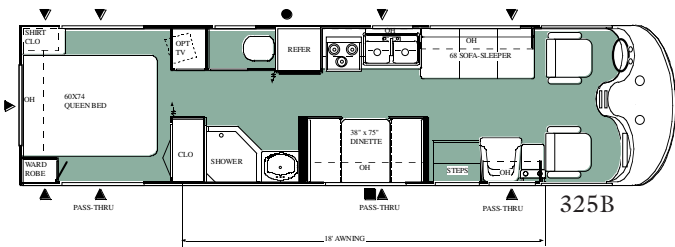
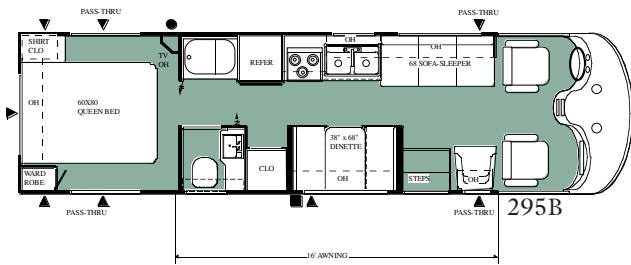


Intruder



LEGEND

- ▲ UNDERFLOOR STORAGE
- OPT EXT WASH DOWN KIT
- OPT EXT ENT CENTER



Twin Beds: 295B, 325B, 345B, 347B, 350B

Free-standing dinette: 325B, 345B, 350B, 359B

Intruder

Standard Features

Chassis and Driver: Aerodynamic contoured front fiberglass cap • Large tinted wrap-around windshield • Contoured front and rear integrated bumpers • Full-view bus-style power mirrors • 4-Speed auto transmission • Power steering • Cruise control • Tilt steering wheel • Reclining swivel captain's chairs • Soft touch vinyl dash • Dash air conditioning • Full instrumentation • AM/FM cassette upgrade stereo • Map light • Battery disconnect • Under-hood light • Radial tires • Stainless steel wheel covers • Mud flaps (4) • Spare tire, wheel and carrier • Aerodynamic full fiberglass rear cap w/trunk storage or diesel access • Automatic emergency start circuit w/central control • Four-wheel disc brakes • Removable grill for service accessibility of control module •

Exterior Features: Colonial white smooth fiberglass exterior with filon lowers • Radius top entrance door • Deadbolt door lock • Electric entrance step • Lighted exterior entry-assist grab handle • Radius corner slider windows (jalousie in bedroom) • Rubber roof • Radius corner domed roof • Roof ladder • Lined & lighted storage compartments • Full basement pass-through storage • Locking exterior storage doors • City water hook-up • Awning rail • Heated holding tanks w/pads • Heated fresh water tank

Electrical Systems: 19" color TV w/remote • Aisle lights (1 at entrance step, 1 in kitchen area, 1 in bedroom) • Wardrobe light(s) • Porch light (s) (1 on each side) • Exterior GFCI receptacle • 45-amp, 12-volt power converter • 30-amp, 120-volt power assembly • 30 amp, 120-volt power cord • TV cabinet with jack in bedroom • Cable TV hook-up • TV antenna with booster • Power bath vent • Trunk lights • Dual RV batteries • Water heater by-pass kit

Appliances and Plumbing: 13,500 BTU central air conditioning in living room • Electronic ignition, floor-ducted furnace (31M BTU - 295; 35M BTU - all others) • Microwave oven • 3-burner cooktop • Lighted power range hood w/monitor panel • Double-door refrigerator w/black glass front • Large double-bowl porcelain kitchen sink • One hardwood sink cover • Foot-flush

toilet • Full height fiberglass tub or shower with shower door • 6-gallon gas water heater w/electric ignition • 12-volt demand water pump • Folding range cover • Outside shower

Interior Features: Barrel chair (where available) • Padded dinette top and end • 100% continuous filament nylon carpeting w/Scotchgard treatment & residential padding • Solid oak cabinet doors throughout • Windshield privacy drape • Roller shades in bedroom • Mini blinds in kitchen and bathroom • Day/night shades in living room • Medicine cabinet w/oak-framed mirrored door • Bedspread & headboard • Cedar-lined bed base • Carbon monoxide detector • Smoke detector • Fire extinguisher • Sun visors • Chair rail in bedroom • Skylight in bath • Fabric ceiling • Carpet lined wardrobe w/mirrored front • Wall clock and mirror • Oak lounge table • Hardwood drink tray • Hardwood entry-assist handle • Cutlery drawer (where available) • Floor mats • Slide-out pantry (where available)

Popular Options

Driver's door w/power window • Dash fans • Backup monitor system • Backup monitor system ready • Electric air horns • Generator • Stainless steel wheel liners • Side-mount awning (NA on 350, 352, 359) • 3-burner, high-output range w/oven • Leveling jacks • Large double-door refrigerator also available w/icemaker • Solid oak refrigerator front • Water filtration system • Twin beds (NA on diesel chassis) • LP gas detector • Plank flooring in kitchen • Exterior entertainment center with pull-out table • TV in bedroom • Video cassette player • Video control center • 6-way power driver's seat • 11,000 BTU rear central A/C • 15,000 BTU front central A/C I.P.O., standard 13,500 BTU front central A/C • Fog lights • Molded countertop in kitchen and bath • Upgrade gel-coat wall • See your dealer for additional options.

Weights and Dimensions



Model	295B	325B	345B	347B s/o	350B	352B	359B
Chassis	Chevy/Ford	Chevy/Ford	Chevy/Ford	Ford	Ford	Ford	Freightliner
Engine Liter (CID)	454/460	454/460	454/460	460	460	460	B5.9 rear diesel
Fuel Capacity	80/75	80/75	80/75	75	75	75	90
Chassis Wheelbase	178"	216.5"/216.5"	234.5"/234.5"	216.5"	234.5"	228"	228"
GVWR	14800/15200	14800/15200	16500/17000	17000	17000	17000	21500
Base Weight	NA	NA	NA	NA	NA	NA	NA
Overall Length	30'2"	32'3"	33'9"	34'2"	33'7"	35'2"	35'9"
Overall Width	8'0"	8'0"	8'0"	8'0"	100"	100"	100"
Overall Height w/roof A/C	11'7"	11'7"	11'7"	11'7"	11'7"	11'7"	12'
Fresh Water System (approx. gal.)	106	106	106	106	106	106	106
Grey/Black Water (approx. gal.)	49/49	49/49	49/49	42/42	49/49	49/49	49/49
LP Gas	100#/31 gal.	100#/31 gal.	100#/31 gal.	100#/31 gal.	100#/31 gal.	100#/31 gal.	100#/31 gal.
Sleeping Capacity	4	4	4	4	4	4	4



Your nearest dealer:



P.O. Box 1107 • Elkhart, IN 46515 (219) 262-2624

Due to constant product improvements, the equipment, specifications, component parts and standard/optional equipment are subject to change without notice or obligation. Product photography or diagrams may show equipment that is optional. Damon Corporation reserves the right to make changes in prices, and models, and to discontinue models without notice or obligation. Components, parts, or chassis may have been manufactured at times other than the model year indicated. All capacities are approximate and dimensions are nominal. See your Damon dealer for full details. DC 6/95. © Damon Corporation - 1995 Printed in the USA.