

1999  IMPERIAL™



Fall In Love All Over Again

Standard and Optional Features

BODY CONSTRUCTION

STANDARD FEATURES

Alumaframe® Superstructure with Five Limited Year Warranty
Steel Cage Cockpit Construction
Tapered Aluminum Roof with Fiberglass Insulation
Smooth Gel Coat Fiberglass Exterior Walls
Front and Rear Molded Fiberglass Caps
Soft Touch Padded Vinyl Ceiling
Steel Framed Floor on Steel Trusses
5/8" Structurewood® Flooring
Underbelly with Blue Block Foam Insulation
Painted Exterior Graphics
Insulated Storage Compartment Doors with Integrated Single-Handle Latches and Keyed-alike Locks

Fiberglass Lined Storage Compartments

Fiberglass Front and Rear Bumpers

Rear Break-away Ladder

Undercoating

OPTIONS

Rubber Storage Compartment Floor Liner

42" Roadside Slide out Storage Tray

48" Curbside Slide out Storage Tray

Vinyl Front Cap Protective Mask

Full Length Holiday Rambler Mud flap

COCKPIT

STANDARD FEATURES

Electronic Tune Sony® AM/FM Cassette with Four Speakers

Halogen Headlights

Driver and Passenger Map Lights

Rear Docking Lights

Driving Lights

Audible Turn Signals

Pantographic Windshield Wipers

Power Steering

Cruise Control

Tilt and Telescopic VIP Steering Wheel

Chrome Air Horns

Rear Vision System with Adjustable Camera

Chrome Power Controlled Heated Exterior Mirrors

CB Radio with Antenna

12V Receptacle in Dash

Air Activated Step Well Cover

Leather-faced Driver and Passenger Recliner Seats with 6-Way Power

Automatic Hydraulic Leveling Jacks

Color Coordinated Carpeted Floor Mats

Driver and Passenger Slide-out Snack Tray

OPTIONS

Driver and Passenger Sun Screens

Sony® CD Player with Ten Disc Changer and

Upgrade AM/FM Cassette Stereo and Speakers

Mobile Theater Sound System

Power Control Roof Spot Light and Floodlight

Leather-faced Queen Passenger Recliner Seat with 6-Way Power and Foot Rest

APPLIANCES AND ACCESSORIES

STANDARD FEATURES

8 cu. ft. 2-Way Refrigerator

High Output 3-Burner Cook Top with Cover

.9 cu. ft. Space Saver Convection Microwave with Touch Control and Range Hood

Systems Monitor Panel

TV Antenna and Booster with TV Jack(s)

Digital Satellite System - Pre-Wire Only

20" Color TV with Remote Control (Living Area)

13" Color TV with Remote Control (Bedroom)

VCR with Video Switching Box

Cable TV Hook-up and Telephone Jacks

APPLIANCES AND ACCESSORIES (continued)

STANDARD FEATURES

Dash Mounted Grab Handle

Door Bell

Washer/Dryer Prep

OPTIONS

8 cu. ft. 2-Way Refrigerator with Ice Maker and Raised Panel Doors

10 cu. ft. 2-Way 4-Door Refrigerator with Ice Maker

AC/DC Exterior Pull-out Freezer/Refrigerator (2.5 cu. ft.)

Vented Combination Washer/Dryer

Recessed High Output 3-Burner Range/Oven with Cover

Fully Automatic Digital Satellite System

INTERIORS

STANDARD FEATURES

Olympic Oak Cabinets

Bright Brass Cabinet Hardware

Solid Wood Raised Panel Cabinet Doors with Recessed Hinges

Dovetail Cabinet Drawers

Hardwood Veneer Paneling

Beveled Decor Mirrors

Full Length Dressing Mirror

Bathroom Mirror

Towel Bars in Bathroom

Robe Hook in Bathroom

Queen Bed with Shirt Closets and Nightstands

Bedspread

Decorative Bedroom Mirrors

Carpeting and Pad in Living Area and Bedroom

Pleated Day/Night Shades, Valances and Padded

Lambrequins in Living Area and Bedroom

Venetian Blinds in Kitchen and Bath

Shelf Lining in Kitchen and Living Area Overhead Cabinets

Solid Surface Kitchen Countertop and Sink Covers with Under Mounted Stainless Steel Sink

Solid Surface Bathroom Countertop with Integrated Sink

Roll-out Pantry (N/A with Side-by-Side Refrigerator) Where Applicable

Dinette Table with Two Fixed and Two Folding Chairs

Loveseat with Fold Down Snack Tray

Sleeper Sofa

Overhead Cabinet in Slide-out

Mirror on Exterior Bath Wall (40PBS, 40CDS, 40WDS)

Ceramic Tile in Kitchen and Bathroom

OPTIONS

Frosted Maple Cabinets

Natural Cherry Cabinets

Leather-faced Sleeper Sofa

Leather J-Lounge

Leather-faced Loveseat with Fold Down Snack Tray (N/A: 38WDS)

Swivel and Glide Recliner Chair

Leather-faced Swivel and Glide Recliner Chair

Booth Dinette

ELECTRICAL SYSTEMS AND LIGHTS

STANDARD FEATURES

50 amp 120V Distribution Panel and Power Cord with Quick-Disconnect

Onan® Marquis 6.5 KW LP Generator on Roll-out Tray

2000 Watt Inverter with Remote Panel

Battery Disconnect Switch

Auxiliary Starter Switch

Porch Light

Patio Receptacle

Courtesy Night Lights in Entry Step and Bedroom

ELECTRICAL SYSTEMS AND LIGHTS (continued)

STANDARD FEATURES

Lighted Entry Assist Handle

Lighted Outside Storage Compartment

Underhood Utility Light

12V Fluorescent Lights in Ceiling

Mood Lights Under Kitchen and Bath Toe Kicks

Cosmetic Lights in Bathroom

Decorative Wall Lights in Bedroom

Decorative Lights in Living Area/Dining Area

Four 6V Deep Cycle Batteries

OPTIONS

50 amp Power Cord Reel

Onan® 75 Diesel Generator on Roll-out Tray

90 Watt Solar Panel Wired to Coach Batteries

PLUMBING AND LP SYSTEMS

STANDARD FEATURES

Demand Water System

Water Filter in Kitchen

No-fuss Flush Holding Tank Rinsing System

10 Gal. LP Gas/Electric Water Heater with

Electronic Ignition (DSI) and Motor Aid

Water Heater By-pass Valve

Glass Shower Door

Porcelain Toilet with Sprayer

Insulated Systems Compartment with Easy Access to Hook-ups

Electric LP Shut-off Switch

Outside Shower with Hot and Cold Water

Gravity and Pressurized Water Fill

SAFETY FEATURES

STANDARD FEATURES

Fire Extinguisher

Deadbolt Lock on Entrance Door

120V GFI Protected Circuit

(Kitchen, Bathroom, Exterior)

LP Gas Detector

Smoke Detector

Carbon Monoxide Detector

Driver and Passenger Three-point Seat Belts (Lap and Shoulder)

Third Brake Safety Light

Egress Window(s)

Back-up Alarm with On/Off Switch

OPTIONS

Security Alarm System with Motion Sensor

Security Safe

HEATING, VENTS, AND AIR CONDITIONING

STANDARD FEATURES

Two Low Profile 13.5M BTU Air Conditioners with Ducted Air and Wall Thermostat with Heat Pump

Electronic Controlled Dash Heating and Air Conditioning System

40M BTU Electronic Ignition Furnace with Ducted Heating System

Auxiliary Automotive Heater

12V Roof Vent in Bathroom

12V Attic Fan with Wall Thermostat in Kitchen

12V Attic Fan in Bathroom

WINDOWS, DOORS AND AWNINGS

STANDARD FEATURES

Large Radius Dual Pane Safety Glass Dark Tinted Slider Windows in Bedroom

Entrance Door with Posi-Lock, Clear Glass, Screen Door and Anti-skid Steps

Tinted Skylight in Bathroom

Patio Awning with Colonial White Arms and Cover

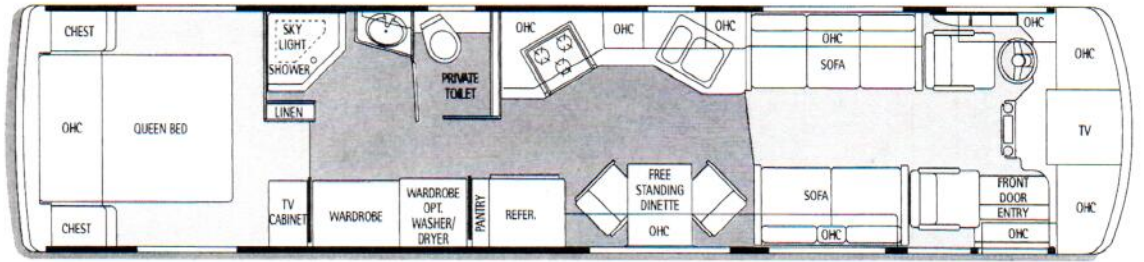
Slide-out Awning (N/A: 38CD)

OPTIONS

Side Window Awnings

Floor Plans

Carpet
Ceramic Tile



Booth Dinette Option

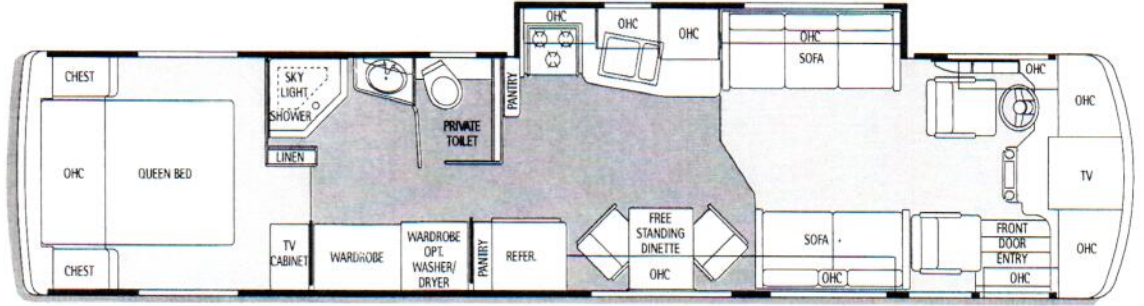
38CD

The road to true luxury has no short-cuts.

Nothing but the best. You've reached a place in life where you refuse to let compromises get in the way of the freedom and sheer delight of motor home living. That's why you expect your motor home to give you a full array of

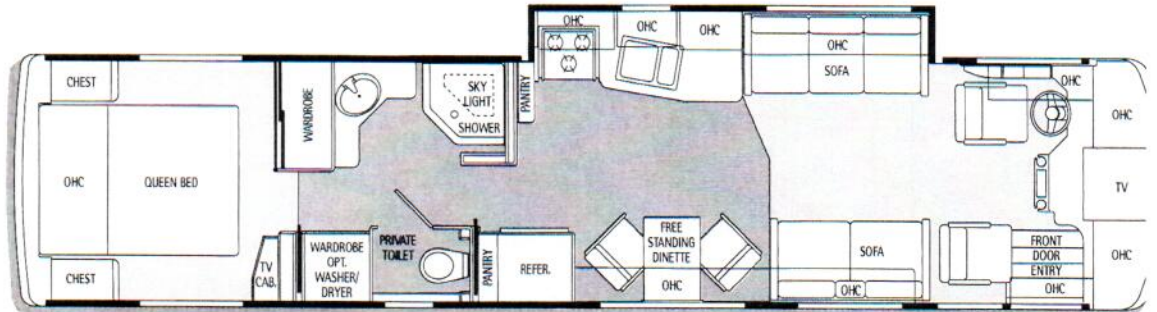
nd features. We created the 1999 Imperial™ for people just like you.

Here's a truly luxurious, stunningly sophisticated coach from Holiday Rambler that's sure to rekindle your passion for motor home living.



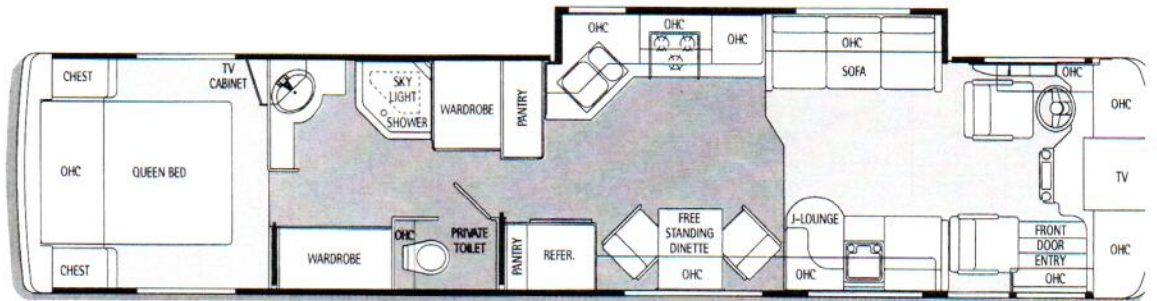
Booth Dinette Option

38CDS



Booth Dinette Option

38WDS



Booth Dinette Option

40PBS

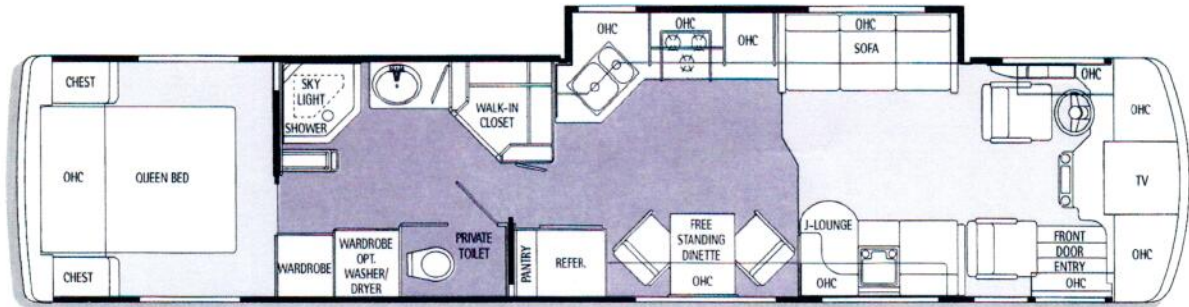


Booth Dinette Option Recliner Option

Due to the large variety of options and floor plan arrangements available to our customers, actual weights for each unit can differ significantly. Holiday Rambler provides a weight sticker on each unit we produce which includes that unit's tank capacities and approximate weight. Consult your local Holiday Rambler dealer for unit availability and further information.

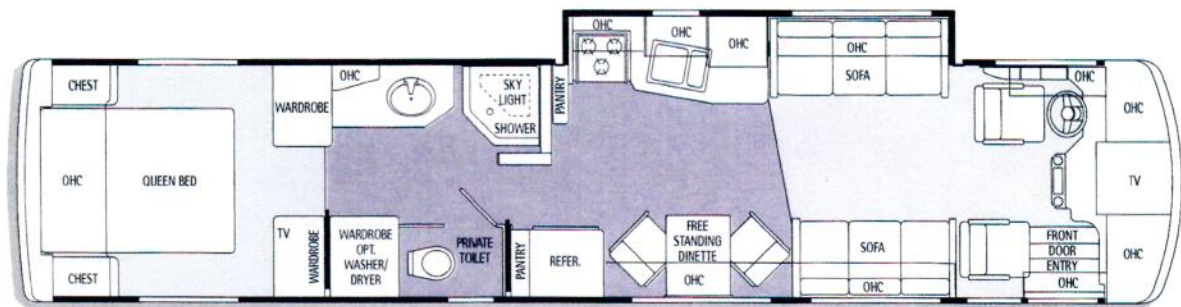
The information printed in this brochure reflects product design, fabrication, and component parts at the date of printing. The manufacturer reserves the right, at any time, to make changes in product design or material or component specifications as its sole option, without notice. This includes the substitution of components of a different brand or trade name which will result in comparable performance. All information printed in this brochure is subject to change after the date of printing. Some features shown or mentioned in this brochure are optional and may only be available in selected floor plans. Photographs may show props or decorations that are not standard equipment on Holiday Rambler models.

Holiday Rambler, the HR logo and its design, and Alumaframe are registered trademarks of Monaco Coach Corporation. All other products and company names are trademarks and/or registered trademarks of their respective holders.



Booth Dinette Option

40CDS



Booth Dinette Option

40WDS

CHASSIS

■ STANDARD FEATURES

Roadmaster Chassis

Cummins® 8.3L/330hp Engine with Fuel Injection, Turbocharged Aftercooled Torque (Lbs.-Ft.Max.Net at 1,300 RPM): 820

Cubic Inch Displacement: 504.5/8.3

Allison® MD3060 6-Speed with Electronic Shifter

200 Amp Alternator

Fuel Tank with Dual Fills

Rear Axle Ratio: 4.78

XZA-1275/70/R22.5 Tires

Remote Inflation Connector

Full Air Suspension with 8 Outboard Air Bags

Full Air Brakes (Drum)

65 Lb. Valve Springs

Pac® Extarder (Exhaust Brake)

Transmission Temperature Gauge

Engine Block Heater 120V/1000W with Switch in Bedroom

Air Cleaner Restriction Indicator

Auto Slack Adjusters

Water/Fuel Separator

Polished Aluminum Wheels

10,000 lb. Hitch Receiver with Skid Bar and 6-Point Connector

● OPTIONS

Cummins® 8.3L/350hp Engine with Fuel Injection, Turbocharged Aftercooled

Allison® MD3066 6-Speed with Electronic Shifter

Torque (Lbs.-Ft. Max. Net at 1,300 RPM): 915

Cubic Inch Displacement: 504.5/8.3



Roseberry



Painted Desert Tan



Fairway Green



Moonbeam Gray



Rose



Tan



Green



Gray

WEIGHTS*	38CD	38CDS	38WDS	40PBS	40CDS	40WDS
Gross Vehicle Weight Rating (lbs)	31,000	31,000	31,000	31,000	31,000	31,000
Gross Combination Weight Rating (lbs)	36,000	36,000	36,000	36,000	36,000	36,000
Gross Axle Weight Rating (Front) (lbs)	12,000	12,000	12,000	12,000	12,000	12,000
Gross Axle Weight Rating (Rear) (lbs)	19,000	19,000	19,000	19,000	19,000	19,000
MEASUREMENTS						
Wheelbase	248"	248"	248"	268"	268"	268"
Overall Length	38' 9"	38' 9"	38' 9"	40' 4"	40' 4"	40' 4"
Height (with A/C) **	12' 1"	12' 1"	12' 1"	12' 1"	12' 1"	12' 1"
Interior Height	6' 6"	6' 6"	6' 6"	6' 6"	6' 6"	6' 6"
Interior Width	96"	96"	96"	96"	96"	96"
Exterior Width	102"	102"	102"	102"	102"	102"
TANK CAPACITIES***						
Water Heater (gal)	10	10	10	10	10	10
Gray Tank (gal)	60	60	60	60	60	60
Black Tank (gal)	40	40	40	40	40	40
Fresh Tank (gal)	100	100	100	100	100	100
Fuel Tank (gal)	100	100	100	100	100	100
LP Tank (gal)	32	32	32	32	32	32
LP with Diesel Generator (gal)	28	28	28	28	28	28

* Approximate weights are based on typically equipped unit.

** Heights are based on units with a static load equal to Gross Vehicle Weight Rating.

*** Tank manufacturer's listed water capacity (WC). Actual filled LP capacity is 80% of listing due to safety shut off required on tank.

THE BEST SUPERSTRUCTURE ON THE PLANET AND AN ENGINE THAT CAN TAKE YOU AROUND THE GLOBE 20 TIMES.

Part of the reason you are attracted to a diesel motor home, such as Imperial™, is that its commercial-quality drive train, properly maintained, has the capacity to go a half-million miles or more – like traveling around the world 20 times!

With Imperial, you get a coach that can keep you going just as long. That's because Imperial is built with the legendary Alumaframe® construction. A highly advanced full-cage aluminum skeleton, Alumaframe is the most rigid and sturdy construction in the industry.



Here's why: Aluminum C-channel uprights and cross members run the full height and length of the coach and are cleverly interlocked. Each intersection is double-welded, providing supreme strength in all directions. And Alumaframe's C-channel structure combines superior strength, durability, and weight savings.

We have so much confidence in the integrity of Alumaframe, we back it with an exclusive five-year limited warranty.

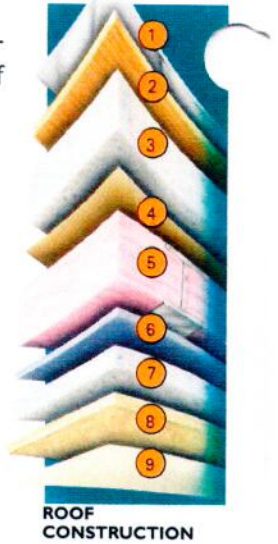
Holiday Rambler created Imperial so you can enjoy a truly luxurious motor coach that's built to last and last.



Imperial rides on a Roadmaster chassis, designed to provide exceptional comfort, safety, ease of handling, and serviceability.

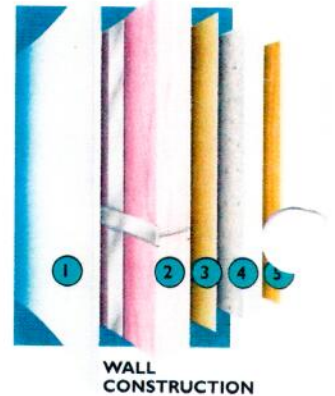
The chassis incorporates our exclusive Cushion Air Glide suspension system, which has eight outboard-mounted air bags and Bilstein® tuned shock absorbers. As a result, you get a super-smooth ride and top-notch handling. Each chassis is built by Monaco Coach Corporation specifically for Imperial motorhomes. This means we can "tune" each chassis to fit the particulars of each floor plan, making adjustments to optimize weight distribution, storage space, and ergonomics. The result? More precise steering and improved ride characteristics.

- Nine-layer triple-insulated roof
1. Heat-reflecting polar-white surface is arched for water runoff and extra strength.
 2. Luaun backer.
 3. Tapered bead foam, 2-inches thick at the center.
 4. Vapor barrier.
 5. 2-1/2-inch aluminum I-beam superstructure filled with fiber glass insulation.
 6. Structure foam.
 7. Bead foam insulation.
 8. Soft foam padding for extra insulation and interior noise reduction.
 9. Soft-touch vinyl ceiling.



Five-layer walls

1. Outer skin is smooth, sleek fiberglass, with no seams or rivets.
2. Alumaframe C-channel uprights and cross members filled with 1-1/2-inch fiberglass insulation.
3. Vapor barrier seals out dampness, eliminates "sweating" on interior walls.
4. More insulation! 3/4-inch layer of bead foam adds comfort and energy savings.
5. Custom interior paneling.



Power, reliability, low maintenance. Imperial is powered by a spirited Cummins® 8.3-liter, 330 hp fuel-injected engine (350 hp optional).

Electronic controls monitor and manage engine functions and eliminate cables between the cab and rear-engine compartment.



MONACO COACH CORPORATION
©1998, Monaco Coach Corporation
Litho in USA • 0798 • HR161

