

# *Tradewinds*

*Luxury Diesel Motorhomes From National RV*



*Specifications & Floor Plans*

## Standard Features

### Body Construction

- DURAFRAME™ Steel Sub Floor Construction
- Steel Framed Laminated Floor
- Steel Framed Crowned Laminated Rubber Roof
- Steel Framed Laminated Fiberglass High Gloss Walls
- Front and Rear Molded Fiberglass Caps
- Soft Touch Ceiling Material
- Electric Slide-Out Room
- Custom Vinyl Exterior Graphics
- Fiberglass Exterior Storage Compartment Doors, Insulated w/ Integrated Latches & Gas Struts
- Integrated Front & Rear Bumpers
- Aluminum Rear Ladder
- Automotive Undercoating as Required

### Chassis / Engine / Suspension

- Freightliner Custom Chassis (XC Series - 26,350 GVWR)
- Caterpillar 3126 300 HP Fuel Injected Diesel Engine Turbocharged & After-cooled
- Torque - 860 lbs. - (Ft. Max. Net at 1,440 RPM)
- 439 Cubic Inch Displacement (7.2L)
- Allison MD3060 6-Speed World Trans. w/ Electronic Shifter
- 90 Gallon Fuel Tank Capacity
- 160 Amp Alternator (Leece-Neville)
- Rear Axle Ratio: 456/1
- Full Air Suspension - Neway
- Front Anti-Sway Bar
- Bilstein Shock Package
- TRW TAS 65 Power Steering w/ 50 Degree Turning Angle
- Stainless Steel Wheel Simulators w/ Valve Extensions
- Radial Tires
- Tire Size 235/80R 22.5 - 8 Bolt Lugs
- Manual Dump Valve For Air Suspension
- Tire Load Range (G)
- Full Air Brakes (Drums) w/ Automatic Slack Adjusters
- Automatic Heated Moisture Ejectors on Air Tanks
- Jacobs Extarder (Exhaust Brake)
- Engine Block Heater w/ Switch in Driver's Cockpit (120V/1,000W)
- Air Cleaner Restriction Indicator
- 5,000 lb. Hitch Receiver w/ Skid Bar & 6-Point Connector

### Cockpit Features

- AM/FM Stereo Cassette and CD w/ 4 Speakers
- Driver & Passenger Map Lights

- Auxiliary Driving Lights
- Fog Lights
- Audible Turn Signals
- Pantographic Windshield Wipers
- Power Steering
- Cruise Control (Electronic)
- Tilt & Telescopic Steering Wheel
- Roof Mounted Dual Trumpet Air Horns
- Rear Vision System w/Microphone
- Power Controlled Heated Exterior Mirrors
- Driver & Passenger Recliner Seats w/ Swivel Bases (Extra Wide Passenger Seat)
- 4-Point Manual Hydraulic Leveling Jacks
- 12V. Receptacle in Console For Cellular Phone
- Rosen Aviation Style Sun Visors
- Snack Tray Cabinet w/ Cup Holders
- Dual Dash Fans (2 - Speed)

### Appliances & Accessories

- 8 Cu. Ft. 2 - Way Refrigerator
- Hair Dryer - Wall Mounted In Bathroom
- Dust Buster Vacuum
- High Output 3 - Burner Cook Top
- Bi-Fold Range Cover w/ Corian
- Spacemaker Convection Microwave w/ Touch Control & Range Hood
- Systems Monitor Panel
- TV Antenna & Booster w/ 12V Recept. & TV Jack(s)
- 19" Color TV w/ Remote Control (Living Area)
- 13" Color TV w/ Remote Control (Bedroom)
- VCR w/ Video Switch Box
- Cable TV Hook-Up & Telephone Jacks
- Coffee Maker

### Interiors

- Oak Paneling & Doors
- Solid Wood Square Raised Panel Cabinet Doors
- Deluxe Cabinetry w/ Hdwd. Overhead End Panels & Upgraded Hardware
- Telestrut Overhead Storage Doors & Pos. Catches On All Other Doors
- Ball Bearing Roller Drawer Guides
- Corian Kitchen Countertops
- Sink Cover (Wood Cutting Block)
- Corian Lavy Top in Bathroom
- Kitchen Waste Basket
- Bathroom Mirror w/ 1" Bevel & Frame
- Towel Bars in Bathroom
- Queen Bed Head-to-Rear (60x80)
- Color Coordinated Bedspread, Pillows & Shams

- Radius Padded Headboard
- Nightstands w/ Corian Tops
- Hide-A-Bed Sleeper Sofa w/ Designer Pillows
- Swivel Rocker Recliner Chair (N/A 7372)
- Designer Love Seat (7372)
- Booth Dinette w/ Drawers (7370)
- Dining Table w/ 2 Wood & 2 Folding Chairs (7372)
- Designer Hutch Shelf w/ Corian & Beveled V-Grooves
- Mirrored Galley Back Splash w/ "V" Grooves
- Nylon Carpeting & Pad in Bedroom & Living Area
- Plank Flooring in Kitchen
- Pleated Day/Night Shades in Living Area & Bedroom
- Valances & Lamberquins in Living Area & Bedroom (Valances have Corian Tops in Bedroom)
- Venetian Blinds & Valances in Kitchen
- Slide-Out Pantry in Kitchen

### Electrical System & Lights

- 50 Amp 120V Distribution Panel & Cord
- Dual 18 Watt Solar Panels
- Generac 6.6 KW LPG Generator
- 2,000 Watt Inverter/Converter w/ Remote On/Off
- 4 - 6V Deep Cycle RV Batteries
- Battery Disconnect Switch
- Porch Light
- Patio Receptacle
- Entry Step Light
- 3 Water Pump Switches (Kitchen, Bath, & Dump Station)
- Decorative Overhead Dining Light
- Cosmetic Light In Bathroom (3-light w/ curved glass shades)
- Decorative lights in Living Area
- Fluorescent Lights in Ceiling
- Decorative Mood Lights
- Storage Compartment Lights

### Plumbing & LPG Systems

- Demand Water System and Water Pump
- Water Filter in Kitchen
- 6-Gallon LPG Water Heater w/ Electronic Ignition
- Water Heater By-Pass Valve
- One-Piece Fiberglass Garden Tub/Shower
- Clear Glass Shower Enclosure
- Porcelain Toilet w/ Sprayer
- Heated Systems Compartment w/ Easy Access
- Decorative Kitchen & Bath Faucets
- Holding Tank Rinsing System (Black Tank Only)

### Safety Features

- Fire Extinguisher
- Deadbolt Lock on Entrance Door
- 120V GFI Protected Circuit (Kitchen, Bath, Exterior)
- LPG Detector
- Smoke Detector
- Carbon Monoxide Detector
- Driver & Passenger 3-Point Seat Belts (Lap & Shoulder)
- 3rd Brake Safety Light
- Egress Window(s)
- Deluxe Acrylic Exterior Grab Handle

### Windows, Doors & Awnings

- Radius Dual Pane Windows w/ Tinted Safety Glass
- Sliding Windows in Living Area, Kitchen & Driving Area
- Power Entrance Step w/ Light
- Radius Entrance Door w/ Clear Glass, Roller Shade
- Power Step Well Cover (7371, 7372)
- Screen Door & Anti-Skid Steps
- Tinted Skylight in Bathroom
- Slide-Out Awning

### Heating, Vents & Air Conditioning

- Dual 13.5M BTU Ducted Roof A/C's w/ Climate Control
- Dash Heating & A/C System w/ Defroster
- Ducted Dual Electronic Ignition Furnaces (35M BTU & 20M BTU)
- 12V Roof Vent in Bathroom
- 12V Attic Fan w/ Wall Thermostat in Living Area

### Optional Features

- Aluminum Wheels (4)
- CD Player (10 Disc)
- 6-Way Power Driver Seat (Included in Leather Package)
- CB Radio & Antenna
- CB Antenna Only
- 8 Cu. Ft. Refrigerator w/ Ice Maker
- 10 Cu. Ft. Side-by-Side Refrigerator w/ Absorption Ice Maker
- U-Line Ice Maker (7370)
- 21" High Output 3 - Burner Range & Oven
- Bedroom AM-FM Cassette Stereo w/ Clock
- Combination Washer/Dryer
- Kitchen Counter Top Extension (Corian)
- Ceramic Tile Floor in Kitchen
- Walnut Interior
- Dining Table w/ 2 Wood & 2 Folding Chairs (7370)
- 2 Wood Dining Chairs (Non-Folding)

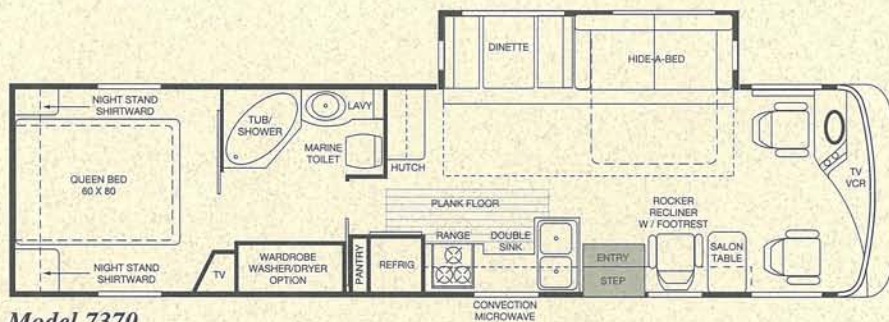
- Generac 7.5 KW Diesel Generator
- Decorative Obscure Shower Glass Decal
- Security Alarm System
- Bedroom Window Awnings 2 - 48"
- Slide-Out Window Awning - 11'
- Slide-Out Window Awning - 66" (Kitchen Slide)
- Acrylic Patio Awning w/ Metal Cover (White)
- Dual 13.5M BTU Ducted Low Profile Roof A/C's
- 6-Gal. Gas/Elec. Water Heater
- Leather Package 1: Driver Seat w/Power, Ex-Wide Pass. Seat, Sofa & Recliner (7370, 7371)
- Leather Package 3: Driver Seat w/Power, Ex-Wide Pass. Seat, Sofa & Love Seat (7372)
- Leather Faced Driver & Passenger Recliner Seats (Included In Leather Package)
- Leather Faced Hide-A-Bed Sleeper Sofa (Included in Leather Package)
- Leather Faced Swivel Recliner Chair (Included in Leather Package 1)
- Leather Faced Love Seat (Included in Leather Package 3)

### Specifications / Dimensions / Capacities

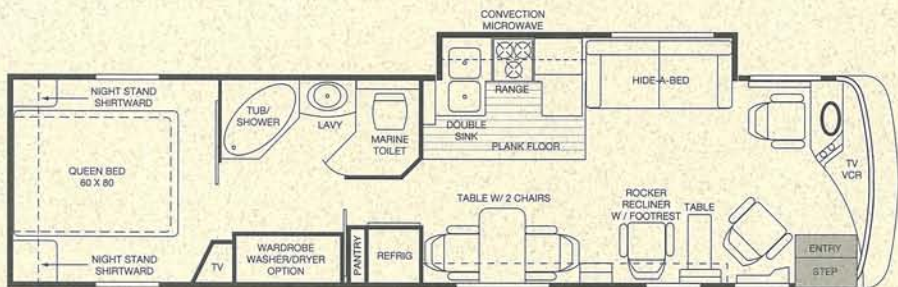
Weights	Model 7370	Model 7371	Model 7372
Gross Vehicle Weight Rating	26,350 lbs.	26,350 lbs.	26,350 lbs.
Gross Combined Weight Rating	31,350 lbs.	31,350 lbs.	31,350 lbs.
Front Gross Axle Weight Rating	9,350 lbs.	9,350 lbs.	9,350 lbs.
Rear Gross Axle Weight Rating	17,000 lbs.	17,000 lbs.	17,000 lbs.
Unloaded Vehicle Weight*	21,000 lbs.	20,320 lbs.	20,320 lbs.
Maximum Carrying Capacity	5,350 lbs.	6,030 lbs.	6,030 lbs.
Measurements			
Wheelbase	228"	228"	228"
Overall Length	36' 6"	36' 6"	36' 6"
Overall Height (Road Height)	12' 1/2"	12' 1/2"	12' 1/2"
Interior Height	79"	79"	79"
Interior Width	98"	98"	98"
Exterior Width	102"	102"	102"
Tank Capacities			
Water Heater	6 Gal.	6 Gal.	6 Gal.
Grey Tank	50 Gal.	50 Gal.	50 Gal.
Black Tank	50 Gal.	50 Gal.	50 Gal.
Fresh Water Tank(s) (2-45 Gal. Tanks)	90 Gal.	90 Gal.	90 Gal.
LPG Tank(s)			
W/ LPG Generator	55.2 Gal.	55.2 Gal.	55.2 Gal.
W/ Diesel Generator	23.2 Gal.	23.2 Gal.	23.2 Gal.

\*Calculated Weights. UVW (Unloaded Vehicle Weight) Includes Full Fuel Tank & Standard Equipment

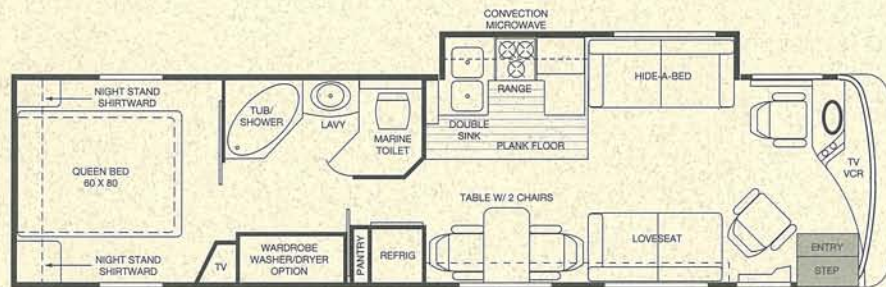
# Floor Plans



Model 7370



Model 7371



Model 7372

*Tradewinds*  
LUXURY DIESEL MOTORHOMES



National R.V., Inc.  
3411 N. Perris Blvd., Perris CA 92571 • 909-943-6007  
www.nrvh.com

© Copyright 1998, National R.V., Inc. 1/99 10M

24-Hour Toll-Free Help Line By  
Coach Net Emergency Road Service

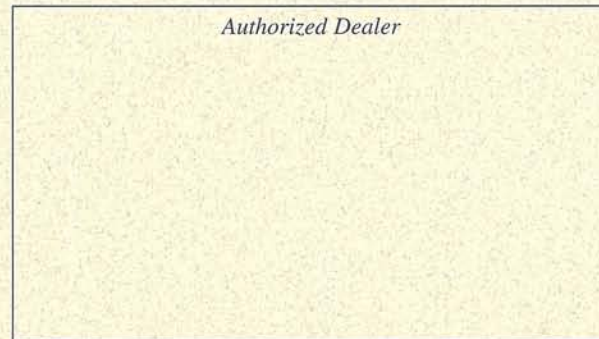


As an original Tradewinds owner,  
you can call toll-free to Coach  
Net, anytime, for expert advice on  
any problem you might have.

(Good for one year from date of purchase. Non-  
transferable program can be extended for a nominal  
fee.)



Authorized Dealer



Due to continual product improvement, National R.V., Inc. reserves the right to change materials, colors, specifications and prices at any time, without notification.