



Picture yourself in a 1999 Sunline

Solaris • Solaris SR • Saturn



Solaris T-2570 (shown in Honey Wheat)



Solaris T-360 SR (shown in Chambrey Blue Velour)



Solaris T-2753 (shown in Garden Green)



Saturn T-24A (shown in Country Denim)

I N S I D E:

New Solaris, Solaris SR
and Saturn models
for 1999

•
Sunline's Two-Year
Limited Warranty

•
On-line at
www.sunlinerv.com

•
Floorplans to fit
active lifestyles

•
Fresh, new interiors
in colorful fabrics

•
Options, options and
more options!

Brochure by

SunLine Fan



245 South Muddy Creek Road
Denver, Pennsylvania 17517-9773
Phone: 717-336-2858
Fax: 717-336-0527
www.sunlinerv.com

Visit your nearest Sunline dealer:



The Sunline Camping

Experience...

Where Every Snapshot

Holds a Lifetime of

Memories.





A 34 year history of leading the way in the recreational vehicle industry.

When it comes to enjoying your family vacation, the road you travel to get there should be half the fun.

You can't beat Sunline's wide range of product offerings, the depth of our quality, or the strength of our service and support network.

For 34 years, Sunline has remained focused on producing a quality product that provides camping fun for all ages. Based in the heart of Amish Country, Lancaster County,

Pennsylvania, we continue to lead the industry in meeting customer needs through avenues such as our direct-to-customer surveys and easy-access web site.

Your family's active lifestyles demand a flexible floorplan and a hassle-free product. At Sunline, we don't



compromise on the reliability factor. After all,



we camp in our trailers too, and we design every Sunline with this in mind.

New for '99.

New interior and exterior standard features for 1999 include:

Interior: White appliances, natural, light oak cabinet color and a new sidewall pattern, modern-styled 12V lights, mirrors framed with wood molding, redesigned window valances, four new interior fabric choices with coordinated 18"x18" throw pillows on each sofa, form-fitting bedspread on each innerspring bed, easy-release TV shelf and double-door refrigerators with larger door handles and ice cube trays.

Exterior: Radius cornered luggage doors with new hold-up clips, stainless steel entrance door stops, modern-styled porch, gas bottle and side hook-up lights* convenient battery terminal rings and redesigned LP bottles that prevent overflow.

* Porch light only on the Saturn line.



Sunline's Two-Year Warranty—

The following will have a two-year limited warranty:

Structural Integrity: Sidewalls, Front and Back Walls, Cabinets, Roof, Floor, Underbelly and Frame.

Components: Air Conditioner, Awning, Furnace, L.P. Tanks, Microwave Oven, Power Converter, Range, Refrigerator, Slide Mechanism*, Sofa Bed Mechanism*, Stereo, Tires*, Toilet, TV Antenna*, Water Heater and Heat Pump.

*Some components may be prorated depending upon usage or supplier manufacturer date.



We're always on-line at www.sunlinerv.com



We've packed our web site with lots of great pictures and practical camping stuff. Visit us on-line to learn more about Sunline at www.sunlinerv.com. We offer these features...and more.

- Spin 360° in our interiors using the latest in virtual reality technology.
- Check any Sunline's actual camping weight (including options), by using our customized towing weight calculator.
- Discover just how affordable a Sunline can be by using our handy, payment calculator.
- Take a virtual reality tour of the Sunline plant.
- View floorplans, specs and color selections in greater detail.
- Locate your nearest Sunline dealer and visit dealer homepages.
- Show your Sunline spirit. Order stylish t-shirts and hats with the Sunline logo in our on-line Company Store.
- For speedy, expert advice, contact the Sunline Advisor with all those tricky camper questions.

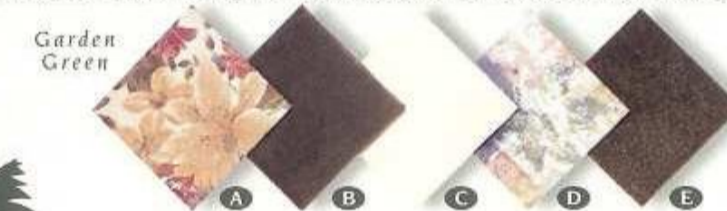
sunline@redrose.net

THE 1999

Sunline Coach Company PRODUCT LINES



A Converta Bed Sofa or Lounge / B Chair or Bunks / C Curtains / D Bedspread / E Carpet



You're right at home any time in your Solaris. Choose a traveling companion from our lineup of 14 models 19 through 30 feet in length. You'll find the best use of interior space, upgraded interior features, oak-edged counter and table tops, and thoughtful placement of storage access in a Solaris. Upgrade any Solaris model to a smooth exterior with our new SE Package (see page 10 for more details).

For 1999, we've expanded our Solaris line to include our Slide Room trailers. Solaris SRs come with plenty of standard equipment in six floorplans ranging from 28 through 37 feet in length. Three of our larger models will increase your living area with a combination dinette/sofa super slide. We also offer three lower profile SR models for easier towing. These models feature a smaller version of a sofa slide and include our new double slide T-290 SR with additional bedroom extension.

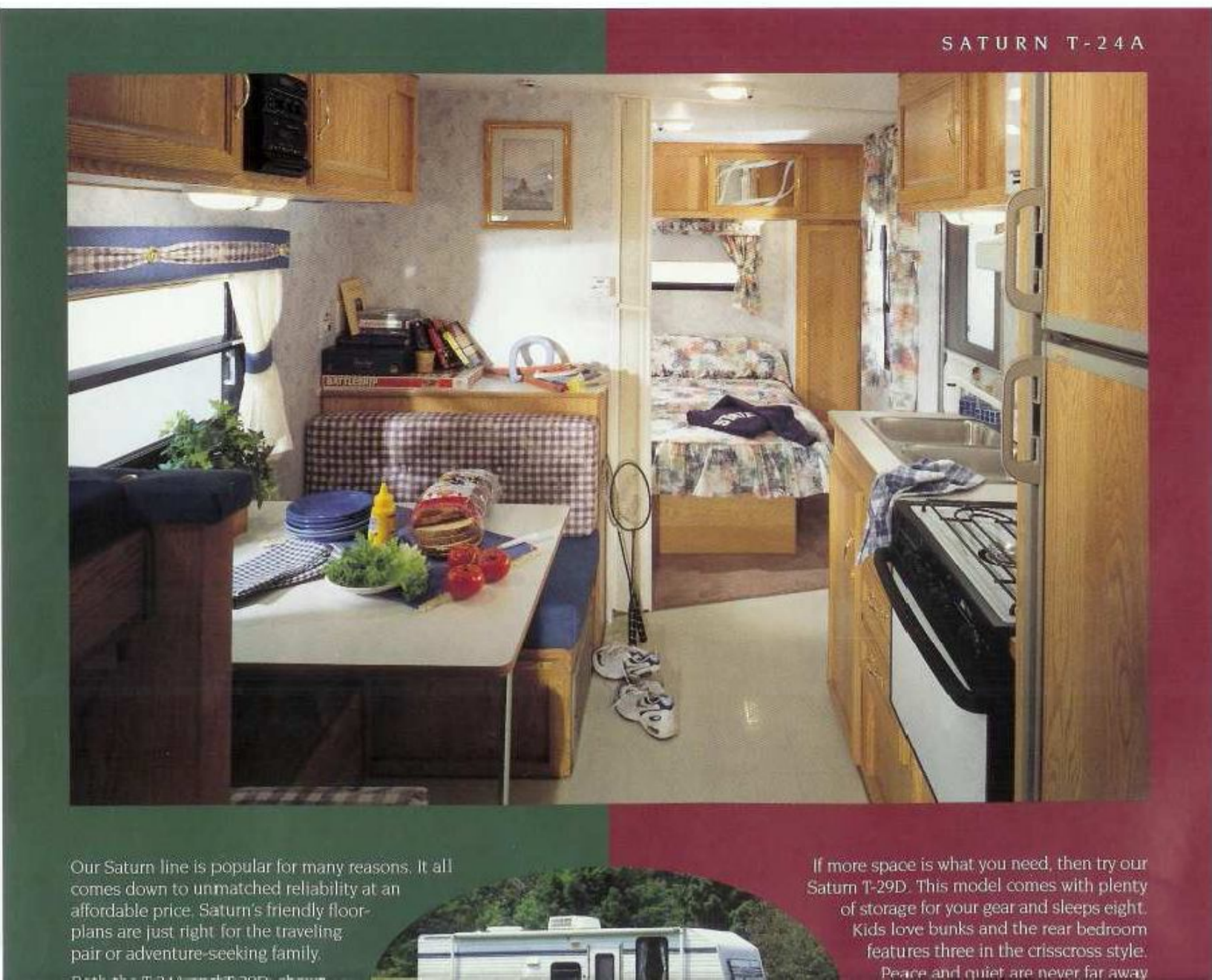


Discover how affordable and fun camping can be in a Saturn. Our lineup of seven floorplans in trailers sized 18 through 30 feet offer the best of the basic camping elements to couples or families on a budget. Saturns combine plenty of large overhead cabinets and wardrobes with practical and liveable floorplans. There's a Saturn that's perfect for your active lifestyle.

See pages 4-5 for Saturn features and floorplans, pages 6-7 for Solaris features and floorplans and pages 8-9 for Solaris SR features and floorplans.

You'll also find the "Sunline Colors & Fabrics for 1999" chart on page 5, featuring all of our interior color scheme groupings.





SATURN T-24A

Our Saturn line is popular for many reasons. It all comes down to unmatched reliability at an affordable price. Saturn's friendly floorplans are just right for the traveling pair or adventure-seeking family.

If more space is what you need, then try our Saturn T-29D. This model comes with plenty of storage for your gear and sleeps eight. Kids love bunks and the rear bedroom features three in the crisscross style. Peace and quiet are never far away



Both the T-24A and T-29D, shown in Country Denim decor, are perfect examples of Saturn's flexibility. The T-24A model weighs under 3,800 lbs. dry and has a private front bedroom with queen bed, side dinette and two stack bunks.

for Mom and Dad in the private front bedroom, and family entertaining is easy with the side dinette and sofa. It's time to have fun and enjoy your leisure time. Value and comfort are standard in your SATURN.



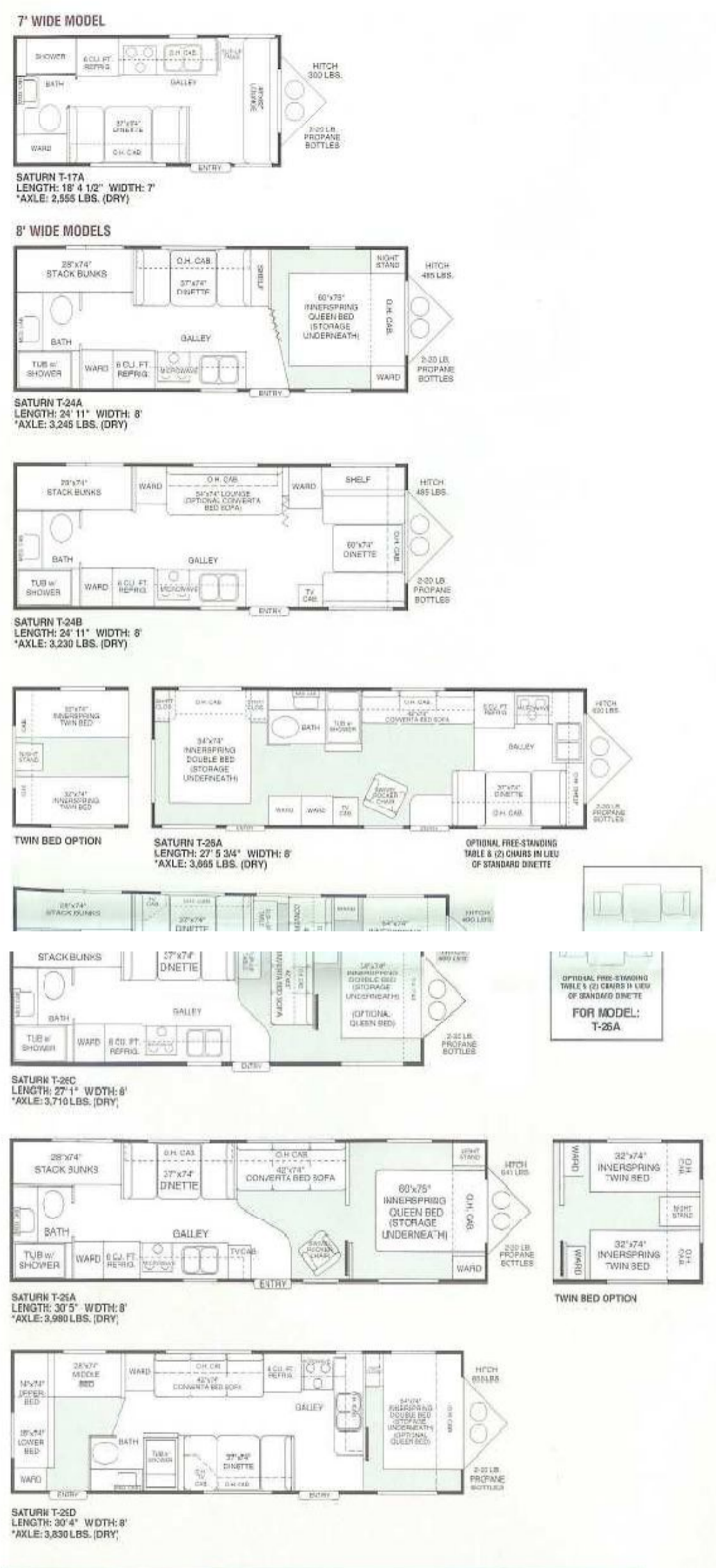
SATURN T-29D



A Converta Bed Sofa or Lounge, Bunks, Dinette Seat, Chair w/Checked (B) Inset / B Chair Inset and Dinette Back / C Curtains / D Bedspread / E Carpet

Saturn Standard Features

- (Some items may vary depending on each model's floorplan design. i.e., bedroom arrangements. Other items may be optional or unable to be added to a specific plan. Consult your dealer if you have any questions.)
- BED ROOM:** Innerspring mattress, coordinated valances and form-fitting bedspread w/built-in pillow sham
- BATH:** Hand flush toilet, shower or tub w/shower w/seamless ABS surround, convenient bath towel rack, medicine cabinet w/mirror
- KITCHEN:** 3-burner high output range, large, double-door gas/electric refrigerator w/auto changeover, double-bowl stainless steel sink, counters and tables topped with real Formica® brand laminate, raised panel overhead cabinet doors
- EASY LIVING:** Ducted air furnace w/automatic ignition & wall thermostat, water heater bypass kit, systems monitor panel, shades (venetian blinds in living area T-26A through T-29D)
- EXTERIOR:** Aerodynamic front sloped roof, heavy-duty 2,000 lb. hitch jack (1,000 lb. on T-17A through T-24B), outside cable TV hook-up, 15" special trailer radial tires (14" T-17A through T-24B), patio light, radius luggage doors w/hold-up clips



ABOUT WEIGHTS

GVWR - Gross Vehicle Weight Rating (listed in the specifications). This is the total maximum allowable weight of the fully loaded trailer (not to be exceeded) which includes the base unit dry weight, all fluids, cargo, optional equipment and accessories. This number, along with other maximum safe vehicle weights, are shown on the Safety Compliance Certification label, located on the exterior left front (off door side) of each unit.

Base Unit Dry Weight - unloaded vehicle, listed in the specifications. This is what the trailer actually weighs w/out cargo (food, clothing, camping supplies), fresh water, LP gas, optional equipment or accessories. You get this number by combining the axle and hitch weights.

Axle Weight - (listed with the floorplan). Proportion of the base unit dry weight that is to be supported by the axles, tires and wheels.

Hitch Weight - Or tongue weight (listed with the floorplan). Proportion of the base unit dry weight that would be supported by the tow vehicle.

Check out our new Tow Vehicle Specifications Guide on page 11.

KEY
 Floorplans - Dotted line denotes overhead cabinet unless noted as a cabinet bed.
 Carpet - Shaded areas.

1999 SATURN SPECIFICATIONS

	Base Unit Dry Weight (lbs.)*	GVWR (Gross Vehicle Weight Rating)	Sleeps (# of people) Std-Opt.	Interior height	Exterior Height (add 9" w/A/C)	Recommended Aving Size	Fresh Water System (approx. gals.)	Gray Water System (approx. gals.)	Septic System (approx. gals.)	Furnace-RTUs / Auto Ignition
7' WIDE MODEL										
T-17A	2855	4000	3	6'4"	8'7"	12'	24	25	25	12,000
8' WIDE MODELS										
T-24A	3730	5500	5	6'6"	8'9"	16'	24	25	25	20,000
T-24B	3715	5500	6	6'6"	8'9"	16'	24	25	25	20,000
T-26A	4285	7000	4-5	6'6"	9'	19'	24	25	30	25,000
T-26C	4200	7000	6-7	6'6"	9'	19'	24	25	30	25,000
T-29A	4620	7000	7	6'6"	9'	21'	24	25	30	25,000
T-29D	4685	7000	8	6'6"	9'	21'	24	25	30	25,000

*All weights are approximate and are for standard equipped models. Weights will vary according to installation and distribution of options, self-contained liquids and construction materials. Some weights are based on 1998 models.

Sunline Colors & Fabrics for 1999

In every Sunline, you'll find comfortable and colorful interior decors designed to match your style of living.

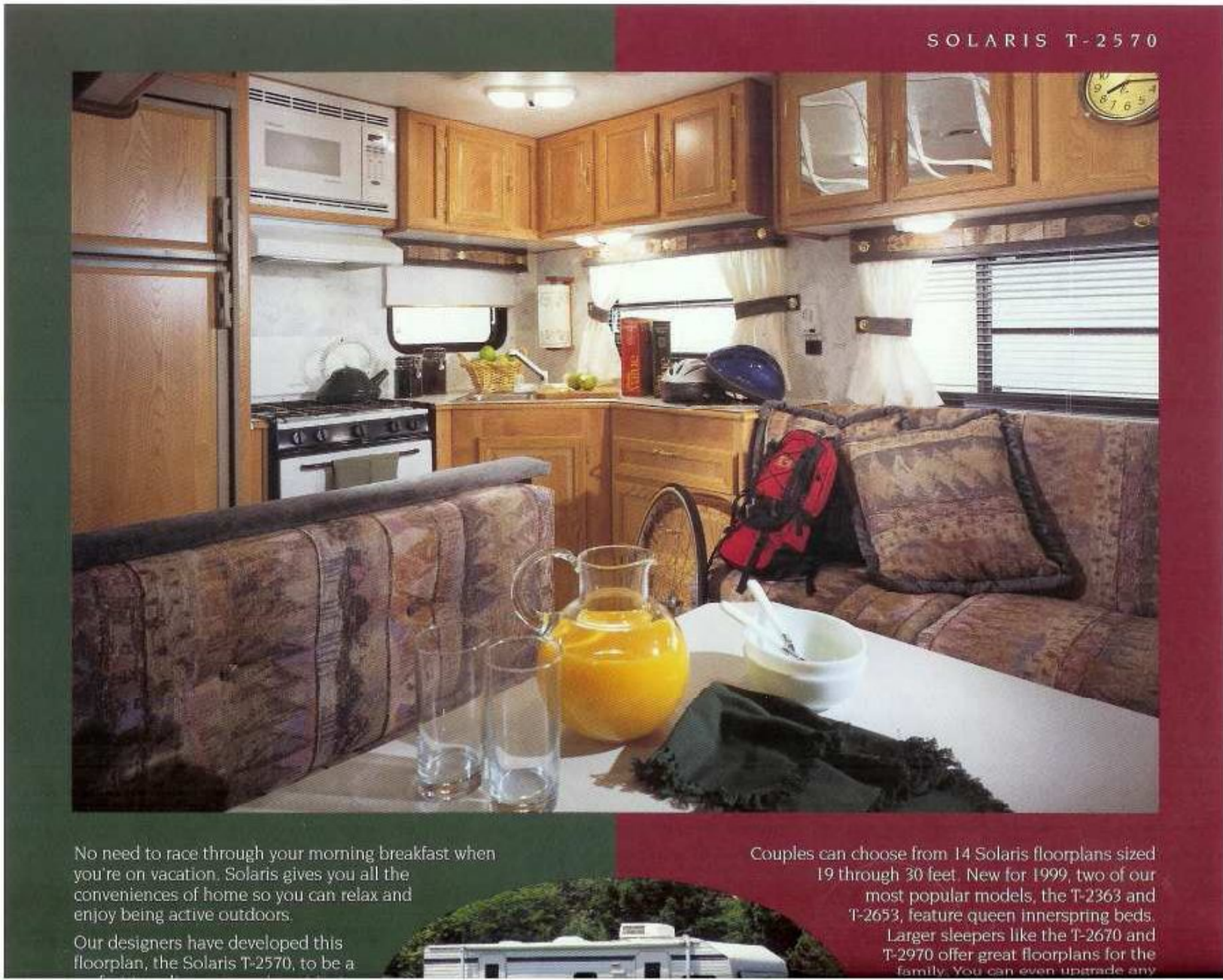
colorful interior decors designed to match your style of living. This year's palette offers natural, earthy tones in both traditional and updated styles. We give you four choices in different weaves coordinated with matching bedspreads, valances, carpet curtains and tiebacks for picture perfect living.

- KEY**
 A Converta Bed Sofa or Lounge, Dinette / B Chair or Bunks
 C Curtains / D Bedspread / E Carpet

Note: Key marks for Country Denim decor only which features a solid blue accent chair, linens and dinette bench cushion (A) as well as checked dinette back cushions and chair seat (B).



Wallboard and Wood Grain Panels (all units)



SOLARIS T-2570

No need to race through your morning breakfast when you're on vacation. Solaris gives you all the conveniences of home so you can relax and enjoy being active outdoors.

Our designers have developed this floorplan, the Solaris T-2570, to be a

Couples can choose from 14 Solaris floorplans sized 19 through 30 feet. New for 1999, two of our most popular models, the T-2363 and T-2653, feature queen innerspring beds. Larger sleepers like the T-2670 and T-2970 offer great floorplans for the family. You can even upgrade any

under 26 feet. This model, shown in Honey Wheat, features a roomy rear kitchen, comfortable Hexsteel™ converta bed sofa opposite an eat-in dinette, walkthrough bath and a walk-around queen innerspring in the front bedroom.



Solaris model to a smooth fiberglass exterior with our SE Package (see page 10).

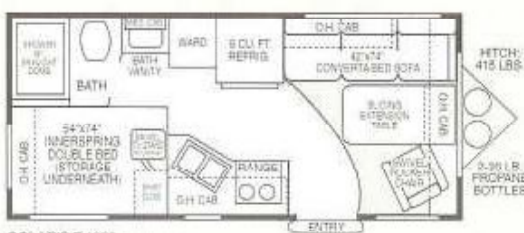
Plan your vacation, or leave on the spur of the moment with your SOLARIS.

A Converta Bed Sofa or Lounge, Dinette / B Chair or Bunks / C Curtains / D Bedspread / E Carpet

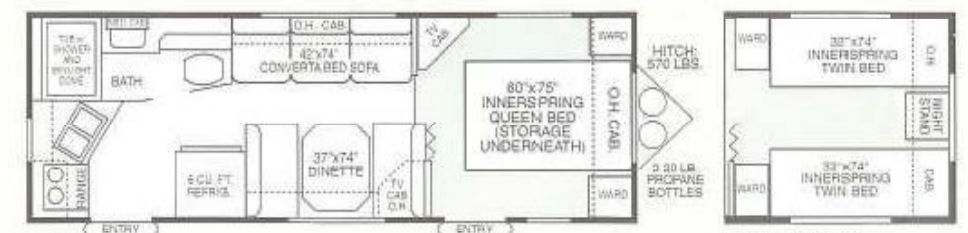


Solaris Standard Features

- BED ROOM:** Hotel grade, 312 coil innerspring mattress with quilted top, coordinated valances and form-fitting bedspread with built-in pillow sham
 - BATH:** Foot pedal flush toilet, shower or tub w/shower w/seamless ABS surround, shower skylight dome, convenient bath towel rack, medicine cabinet and mirror
 - KITCHEN:** Oak-edged counter and table tops, 3-burner high output range with deep oven and push button ignition, large, double-door gas/electric refrigerator w/auto changeover, double-bowl stainless steel sink
 - EASY LIVING:** Ducted air furnace w/automatic ignition & wall thermostat, water heater bypass kit, gas/electric hot water heater w/auto ignition, systems monitor panel, oak handrail, venetian blinds (except galley and bedroom)
 - EXTERIOR:** Aerodynamic front sloped roof, heavy-duty 2,000 lb. hitch jack, outside cable TV hook-up, gas bottle cover, 15" special trailer radial tires (14" T-1950 through T-2475), patio, gas bottle and side utility lights, radius luggage doors w/hold-up clips
- SE PACKAGE** - add a smooth fiberglass exterior to any Solaris. (See page 10 for more information.)



SOLARIS T-1950
LENGTH: 19'11" WIDTH: 8'
*AXLE: 3,035 LBS. (DRY)

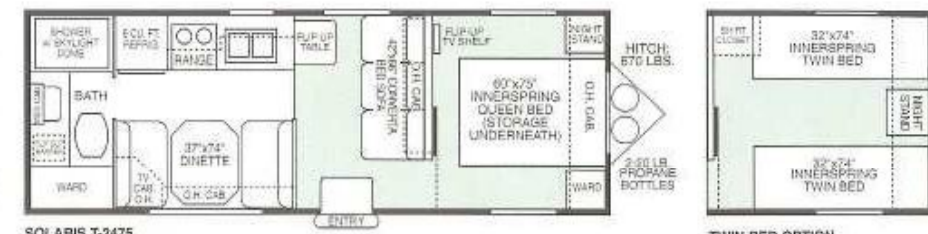


SOLARIS T-2376
LENGTH: 24' WIDTH: 8'
*AXLE: 3,385 LBS. (DRY)



TWIN BED OPTION

SOLARIS T-2453
LENGTH: 24'11" WIDTH: 8'
*AXLE: 3,615 LBS. (DRY)



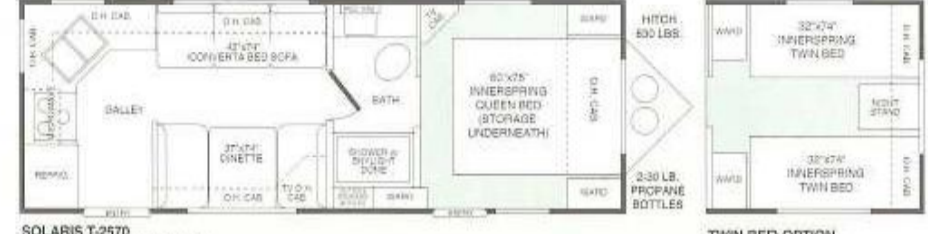
SOLARIS T-2475
LENGTH: 25' WIDTH: 8'
*AXLE: 3,325 LBS. (DRY)

TWIN BED OPTION



TWIN BED OPTION

SOLARIS T-2553
LENGTH: 25'11" WIDTH: 8'
*AXLE: 3,625 LBS. (DRY)



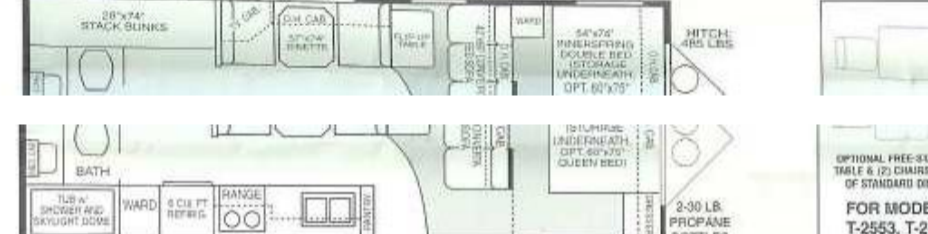
SOLARIS T-2570
LENGTH: 25'10" WIDTH: 8'
*AXLE: 3,725 LBS. (DRY)

TWIN BED OPTION

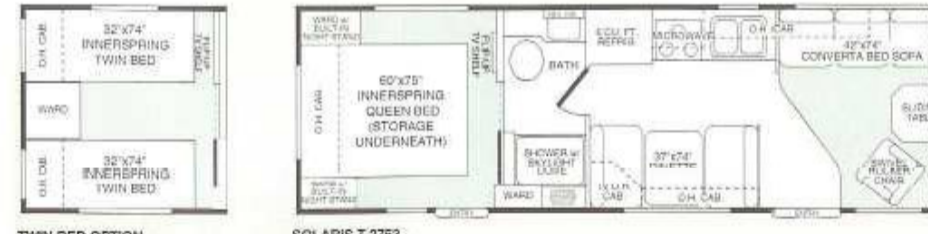
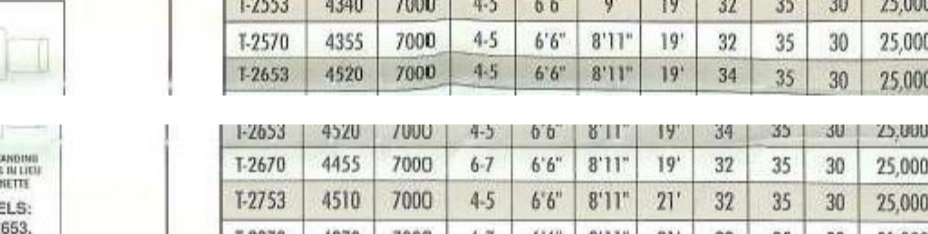


TWIN BED OPTION

SOLARIS T-2653
LENGTH: 27'5" WIDTH: 8'
*AXLE: 3,815 LBS. (DRY)

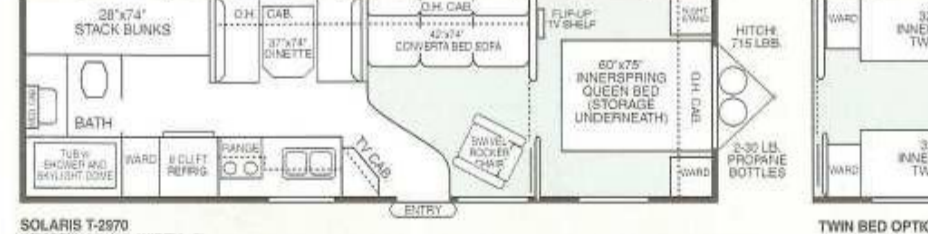
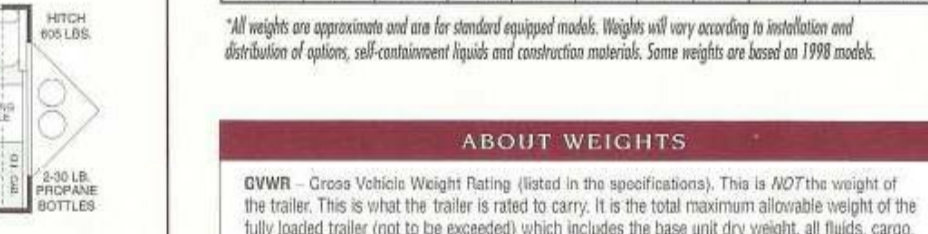


SOLARIS T-2670
LENGTH: 28'11" WIDTH: 8'
*AXLE: 3,970 LBS. (DRY)

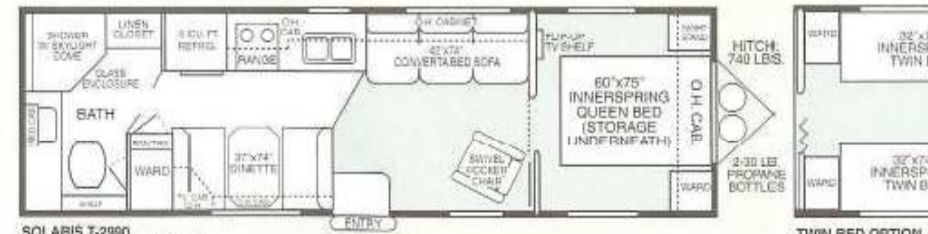


TWIN BED OPTION

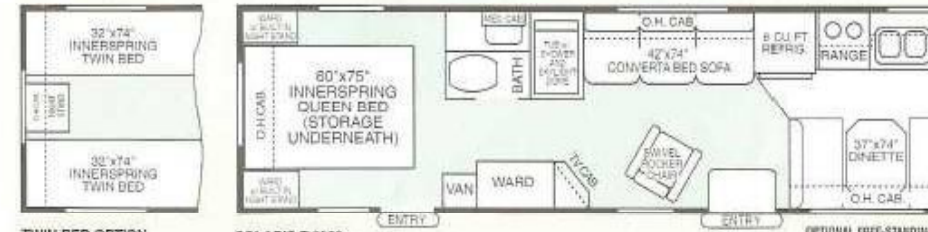
SOLARIS T-2733
LENGTH: 27'7" WIDTH: 8'
*AXLE: 3,905 LBS. (DRY)



SOLARIS T-2970
LENGTH: 29'11" WIDTH: 8'
*AXLE: 4,155 LBS. (DRY)



SOLARIS T-2990
LENGTH: 29'11" WIDTH: 8'
*AXLE: 4,175 LBS. (DRY)



TWIN BED OPTION

SOLARIS T-3060
LENGTH: 30'9" WIDTH: 8'
*AXLE: 4,220 LBS. (DRY)



1999 SOLARIS SPECIFICATIONS

	Base Unit Dry Weight (lbs.)*	GWR (Gross Vehicle Weight Rating)	Sleeps (# of people)	Std. Opt.	Interior Height	Exterior Height (add 9" w/A/C)	Recommended Awning Size	Fresh Water System (approx. gals.)	Gray Water System (approx. gals.)	Septic System (approx. gals.)	Furnace-BTU's / Auto Ignition
T-1950	3450	5000	3-4	6'4"	8'8"	12'	24	25	25	20,000	
T-2053	3465	5000	4-6	6'4"	8'8"	14'	24	25	25	20,000	
T-2363	3975	5500	4	6'4"	8'8"	16'	34	25	25	20,000	
T-2370	3955	5500	4-5	6'4"	8'8"	16'	30	25	25	20,000	
T-2453	4150	5500	4	6'4"	8'10"	16'	32	25	25	20,000	
T-2475	3995	5500	4-5	6'4"	8'8"	16'	24	25	25	20,000	
T-2553	4340	7000	4-5	6'6"	9'	19'	32	35	30	25,000	
T-2570	4355	7000	4-5	6'6"	8'11"	19'	32	35	30	25,000	
T-2653	4520	7000	4-5	6'6"	8'11"	19'	34	35	30	25,000	
T-2670	4455	7000	6-7	6'6"	8'11"	19'	32	35	30	25,000	
T-2753	4510	7000	4-5	6'6"	8'11"	21'	32	35	30	25,000	
T-2970	4870	7000	6-7	6'6"	8'11"	21'	32	35	30	31,000	
T-2990	4915	7000	4-6	6'6"	8'11"	21'	32	35	40	31,000	
T-3060	4885	7000	4-6	6'6"	8'11"	21'	32	35	30	31,000	

*All weights are approximate and are for standard equipped models. Weights will vary according to installation and distribution of options, self-containment liquids and construction materials. Some weights are based on 1998 models.

ABOUT WEIGHTS

GWR - Gross Vehicle Weight Rating (listed in the specifications). This is NOT the weight of the trailer. This is what the trailer is rated to carry. It is the total maximum allowable weight of the fully loaded trailer (not to be exceeded) which includes the base unit dry weight, all fluids, cargo, optional equipment and accessories. This number, along with other maximum safe vehicle weights, are shown on the Safety Compliance Certification label, located on the exterior left front (off door side) of each unit.

Base Unit Dry Weight - (unloaded vehicle, listed in the specifications). This is what the trailer actually weighs without cargo (food, clothing, camping supplies), fresh water, LP gas, optional equipment or accessories. You get this number by combining the axle and hitch weights.

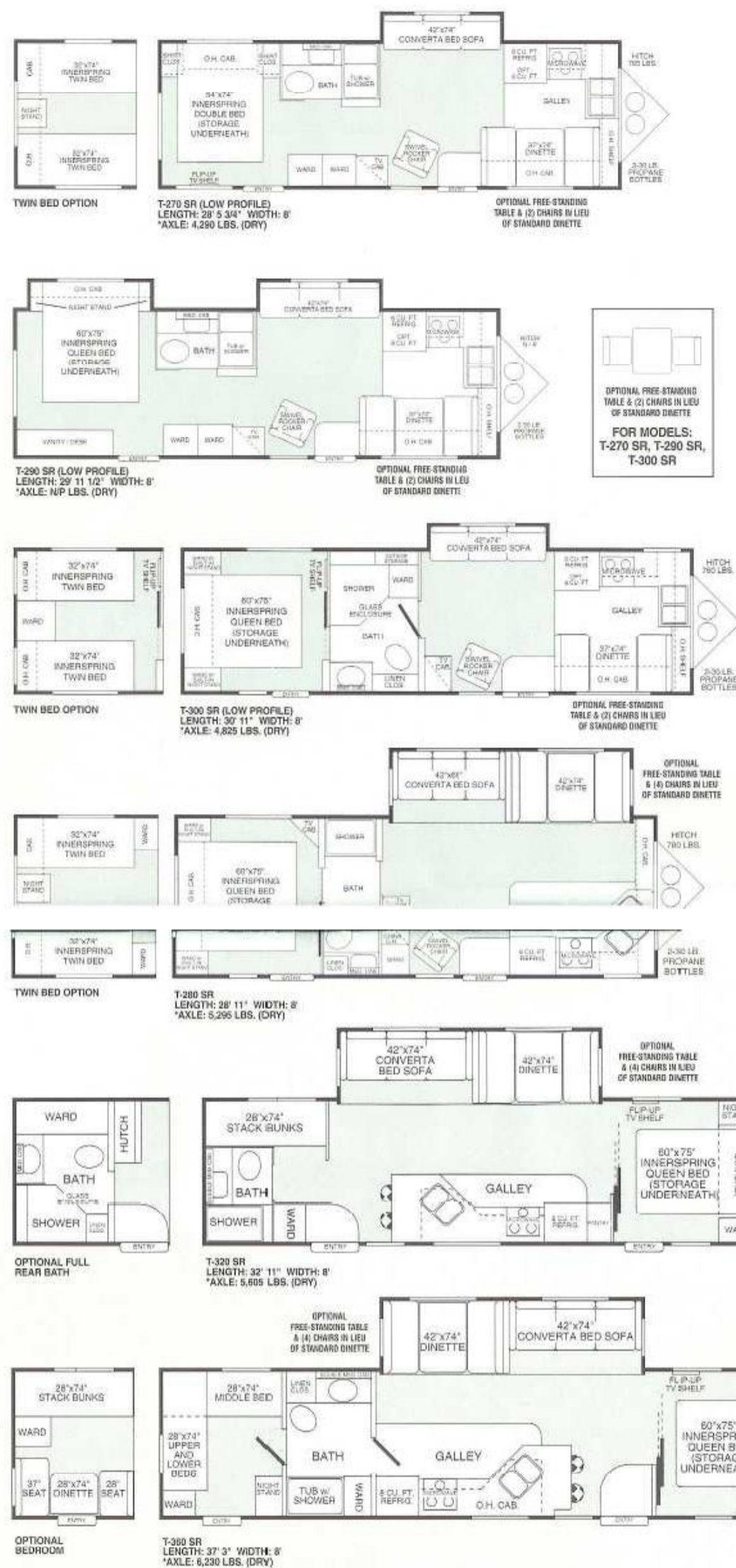
Axle Weight - (listed with the floorplan). Proportion of the base unit dry weight that is to be supported by the axles, tires and wheels.

Hitch Weight - Or tongue weight (listed with the floorplan). Proportion of the base unit dry weight that would be supported by the tow vehicle.

Check out our new **Tow Vehicle Specifications Guide** on page 11.

KEY Floorplans - Dotted line denotes overhead cabinet unless noted as a cabinet bed.
Carpet - Shaded areas.





1999 SOLARIS SR SPECIFICATIONS

	Base Unit Dry Weight (lbs.)*	GVWR (Gross Vehicle Weight Rating)	Sleeps (# of people) Std.-Opt.	Interior Height	Exterior Height (w/ 9" w/A/C)	Recommended Awning Size	Fresh Water System (approx. gals.)	Gray Water System (approx. gals.)	Septic System (approx. gals.)	Furnace-BTUs / Auto Ignition
Low Profile Sofa/Bed Slide Models										
T-270 SR	5055	7000	4-6	6'6"	9'3"	21'	24	55**	35	31,000
T-290 SR	N/P	N/P	4-6	6'6"	9'3"	21'	24	55**	35	31,000
T-300 SR	5585	7000	4-6	6'6"	9'3"	21'	24	60**	35	31,000
Super Slide (Dinette & Sofa) Models										
T-280 SR	6075	10000	4-6	6'6"	9'10"	21'	24	55**	30	31,000
T-320 SR	6380	10000	6-8	6'6"	9'10"	21'	24	35	35	31,000
T-360 SR	7125	10000	7-9	6'6"	9'10"	21'	24	35	35	31,000

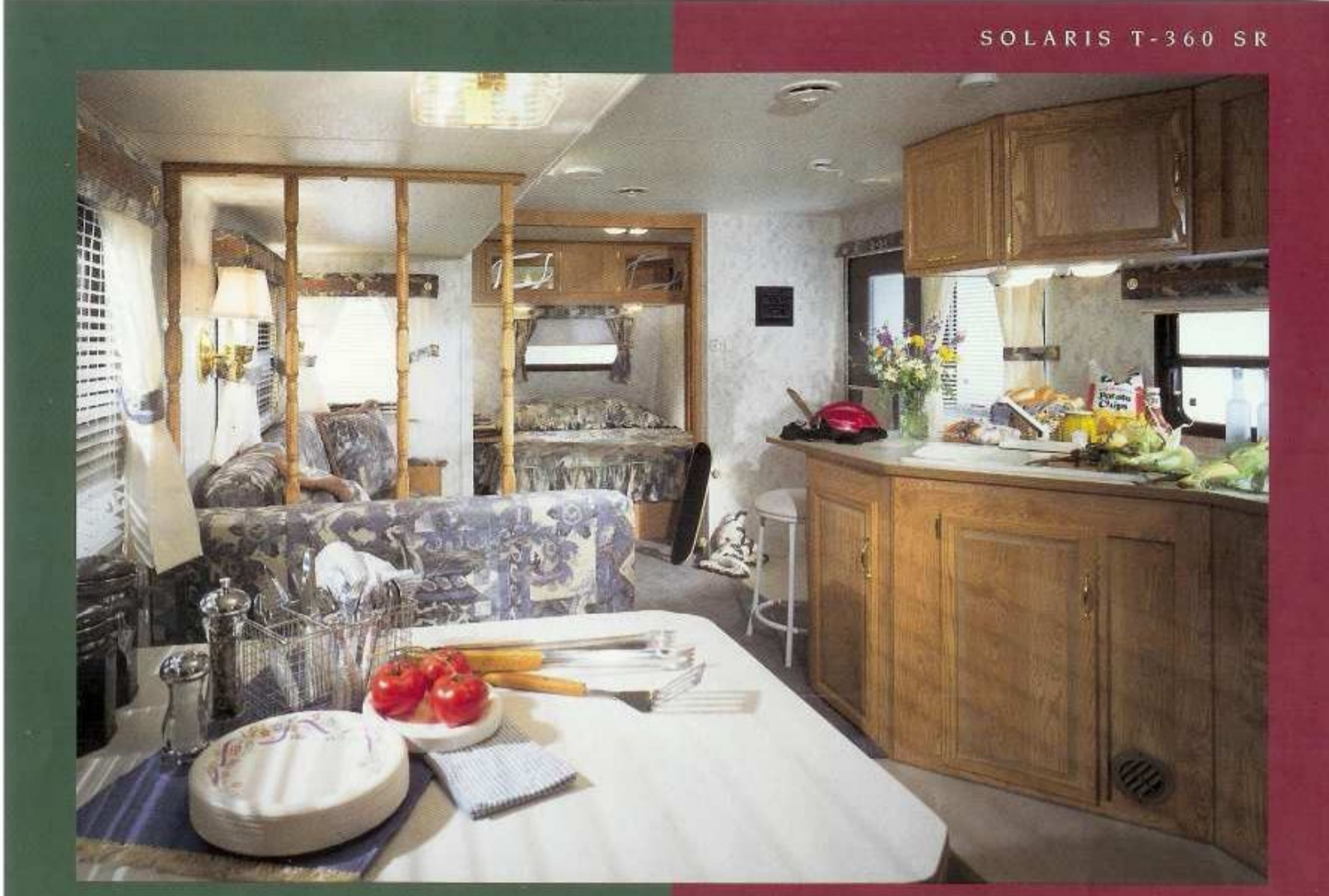
*All weights are approximate and are for standard equipped models. Weights will vary according to installation and distribution of options, self-containment liquids and construction materials. Some weights are based on 1998 models.
**Combined two tank total.

Simple & Reliable EZ Slide System
IT'S EASY TO SLIDE INTO FUN!

For a perfect, smooth slide every time, Sunline uses an electric Barker EZ-POWER

Slide, Barker's Rack and Pinton design, similar to today's auto steering systems, eliminates room walking and a worm drive gear box ensures positive room lock. EZ Slide puts you in control.

1999 SUNLINE SOLARIS SR



SOLARIS T-360 SR

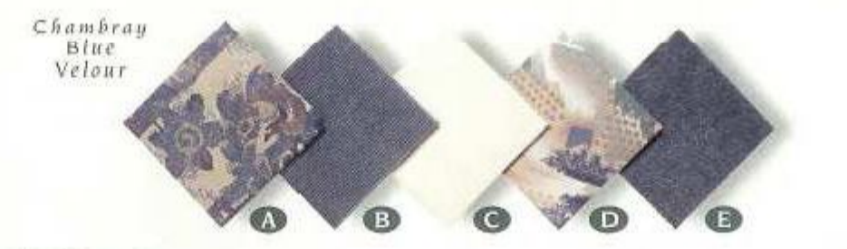
Our Solaris SRs offer you more space to keep up with your family's busy, active lifestyles. There's plenty of elbow room in this Solaris T-360 SR shown in Chambray Blue Velour. This model features an eat-in breakfast bar, private front bedroom, walk-through bath and a rear bedroom for the kids.

and bathroom as well as new options like free-standing tables and chairs, slide room topper awning and satellite dish. There's even a sliding glass patio door option on our T-320 and T-360 SR models, making these models really feel like home.

private front bedroom, walk-through bath and a rear bedroom for the kids. Three of our SRs extend with a 12 1/2 or 14 foot super slide while our three lower profile models offer easy towing and a sofa slide. The new double-slide T-290 SR offers both sofa and bedroom slides. Solaris SRs feature numerous bedroom

options to help you feel like home. There's plenty of fun from corn roasts to campfires waiting for your family to discover, so why not enjoy it in a SOLARIS SR.

A Converta Bed Sofa or Lounge, Dinette / B Chair or Bunks / C Curtains / D Bedspread / E Carpet



Solaris SR Standard Features

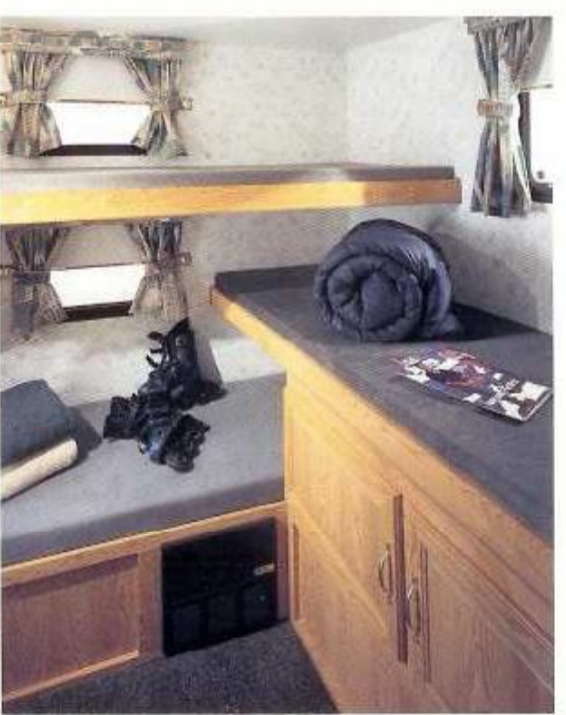
(Some items may vary depending on each model's floorplan design, i.e., bedroom arrangements. Other items may be optional or unable to be added to a specific plan. Consult your dealer if you have any questions.)

BED ROOM: Hotel grade, 312 coil innerspring mattress with quilted top, coordinated valances and form-fitting bedspread with built-in pillow sham
BATH: Foot pedal flush toilet, shower or tub w/shower w/seamless ABS surround, shower skylight dome, convenient bath towel rack, medicine cabinet and mirror (double-door medicine cabinet on T-320 stack bunks and T-360 SR)

KITCHEN: 3-burner high output range with deep oven and push button ignition, 8 cu.ft. double-door gas/electric refrigerator w/auto changeover (6 cu. ft. double-door w/auto changeover on T-270 SR, T-290 SR, T-300 SR), deep, double-bowl white molded acrylic sink, counters and tables topped with real Formica® brand laminate, deep drawers in dinette ends)

EASY LIVING: Ducted air furnace w/automatic ignition & wall thermostat, water heater bypass kit, systems monitor panel, electric sofa or sofa/dinette slide room, stereo system (w/cassette, 4 speakers and exterior antenna), 45 amp converter, venetian blinds (except galley and bedroom), electric bedroom slide (T-290 SR), two TV jacks (easy connect 18" pigtail provided for one jack), one jack w/12V outlet and sending unit

EXTERIOR: Heavy-duty 2,000 lb. hitch jack, outside cable TV hook-up, TV antenna, 15" special trailer radial tires, patio, gas bottle and side utility lights, powder coated twin 30 lb. LP bottles w/auto changeover regulator, gas bottle cover, triple foldout entrance steps (one-step low profile SRs), radius luggage doors w/hold-up clips



SOLARIS T-360 SR

Sleeping the kids in comfortable quarters is easy compared to teaching Mom the ins and outs of rollerblading.

- Upholstered bunk mats (not just ticking)
- Plenty of storage space to stow all your kids' gear
- TV jack hook-up
- Optional double-stack bunk with dinette

ABOUT WEIGHTS

GVWR - Gross Vehicle Weight Rating (listed in the specifications). This is NOT the weight of the trailer. This is what the trailer is rated to carry. It is the total maximum allowable weight (not to be exceeded) which includes the base unit dry weight, all fluids, cargo, optional equipment and accessories. This number, along with other maximum safe vehicle weights, are shown on the Safety Compliance Certification label, located on the exterior left front (off door side) of each unit.
Base Unit Dry Weight - (unloaded vehicle, listed in the specifications). This is what the trailer actually weighs without cargo (food, clothing, camping supplies), fresh water, LP gas, optional equipment or accessories. You get this number by combining the axle and hitch weights.
Axle Weight - (listed with the floorplan). Proportion of the base unit dry weight that is to be supported by the axles, tires and wheels.
Hitch Weight - Or tongue weight (listed with the floorplan). Proportion of the base unit dry weight that would be supported by the tow vehicle.
Check out our new Tow Vehicle Specifications Guide on page 11.



KEY: Floorplans - Dotted line denotes overhead cabinet unless noted as a cabinet bed.
Caret - Shaded areas.
N/P - Not available at print time.

Sunline Options

Ask your dealer about Sunline's Preferred Option Groupings (POG) with each model,* as well as additional available options on all Sunline models. Not all options shown are available on each model. Consult your dealer for the standard and optional features on each model (*except Saturn T-17A).



• Stereo system (CD player optional)



• Wall clock

- 3-burner high output range w/push button ignition and deep oven
- Microwave oven with turntable
- Kitchen kit (includes range top cover, oak paper towel holder and cutting board sink cover)



• Frost-free glass bathroom window



• Gas tank cover
• Deluxe hinged top LP 30 lb. bottle cover (pictured)
• Power hitch jack with light



• Satellite dish, portable (Solaris SR only)



• Domestic air conditioner (ducted roof mount central air available on models T-2493 through T-3060 Solaris, all Solaris SR models and T-26A through T-29A Saturn)



• Slide Room topper awning (Solaris SRs only)



• Domestic A&E awning
• Rubber ride axles (Solaris only)



• SE Package - Smooth, seamless white fiberglass exterior w/1/4" offset layered luan backing. Features include: better resale value, easy to keep clean, improved R-value of insulation, aerodynamic shape.
SE Package for Solaris models only. (Not available on Solaris SR and Saturn.)

Sunline's optional features for 1999 - with more of everything you're looking for.



Solaris Preferred Option Group

- 11,000 BTU Roof Mount Air Conditioner (T-1950 through T-2370)
- 13,500 BTU Ducted Roof Mount Central Air Conditioning (T-2453 through T-3060)
- Awning (21' awnings include center tension rafter)
- Microwave Oven w/Turntable
- TV Antenna
- Kitchen Kit (range top cover, oak paper towel holder and cutting board sink cover)
- Wall Clock
- Bath Window w/Venetian Blind
- Large Stereo w/Cassette, 4 Speakers and Exterior Antenna (optional CD player)
- Outside Shower

Other Popular Solaris Options

- SE Package (smooth fiberglass exterior)
- Leveling/Stabilizer Jacks
- 4 Wheel Independent Rubber Ride Suspension (except T-1950 and T-2053)
- Under Bed Storage Kit
- Sealed 3-burner High Output Range w/Electronic Ignition and Deep Oven



Solaris SR Preferred Option Group

- 15,000 BTU Ducted Roof Mount Central Air Conditioning (13,500 BTU for T-270 and T-300 SR)
- 21' Awning w/Center Tension Rafter
- Microwave Oven w/Turntable

- sink cover)
- Interior Shower Skylight Dome (height friendly)
- Gas/Electric Hot Water Heater w/Auto Ignition
- Large Stereo w/Cassette, 4 Speakers and Exterior Antenna (optional CD player)
- Outside Shower

Other Popular Solaris SR Options

- Sliding Glass Patio Door w/Curtain or Optional Vertical Blinds (T-320 and T-360 SR only)
- Leveling Jacks
- 8 cu. ft. Double-door Refrigerator (optional on T-270, T-290 and T-300 SR)
- Free-standing Table and Chairs (in lieu of standard dinette)
- Deluxe, Hinged Top 30 lb. LP Bottle Cover
- Portable Satellite Dish
- Wardrobe Drawer and Under Bed Storage Kits (selected models only)



Saturn Preferred Option Group (except T-17A)

- 13,500 BTU Roof Mount Air Conditioner (11,000 BTU for T-24A and T-24B)
- Awning (21' awnings include center tension rafter)
- Microwave Oven w/Turntable
- TV Antenna
- Oven
- Large Stereo w/Cassette, 4 Speakers and Exterior Antenna (optional CD player)
- LP Bottle Cover

Other Popular Saturn Options

- Outside Shower
- Interior Shower Skylight Dome (height friendly)
- Gas/Electric Hot Water Heater w/Auto Ignition
- Twin, 30 lb. LP Bottles w/Auto Regulator
- Wardrobe Drawer Kit
- Under Bed Storage Kit
- Stabilizer Jacks

Proven quality built into every Sunline model we make.

Solaris, Solaris SR and Saturn Exterior & Construction Features

EXTERIOR

Roof

- Seamless Rubber Roof with 12-Year Limited Warranty
- Puncture resistant
- Cooler & quieter than metal roof

Insulation

- R-7 fiberglass insulation throughout (roof, floor, sidewalls, fronts, and backs)
- Allows more efficient cooling and heating

Radius Windows and Luggage Doors

- Fewer seams than square luggage doors and windows

Krystal Kote™ Exterior Metal Finish

- Resists dents and scratches
- Adds strength to metal

Popular Color Sport Striping

- Coordinates with popular tow vehicle colors

Embossed Lower Exterior Metal Panels

- Resists dents from small stones on the road
- Resists chipping so your trailer looks better longer

Foam Sealed Clearance Lights

- Automotive type lights
- Resists moisture
- No pop-on lenses to fall off



- Roof Materials Overlap Sidewall
- All Corners are Overlapped and Double-Sealed
- Vinyl Screw Covers on all Molding



- Sidewalls, Roof, Fronts and Backs all Secured with Screws
- 2x4 Roof Rafter (in ducted air models), all others 2x3
- Aerodynamic Sloped Front Roof Construction (N/A T-270, T-320 and T-360 Solaris SRs)
- All Vinyl Paneling Bonded to Studding



- Daxler Axles
- The Floor is Bolted to the Frame (not lag screwed)
- C-Channel or Steel Tube, Cambered Undercarriage (I-Beam on Slide models) (N/A T-270, T-290 and T-300 Solaris SRs)
- Extra Heavy-Duty Front Cross-Member, with Tapered Outriggers
- 2-Bar Cross-Members on Frame
- Seamless High Performance Polypropylene Undersiding
- ABS Holding Tanks

*WINDSHIELD DRIVERS



INTERIOR

All Cabinets are Made with Real Wood Core Stock

- Screwed together for extra strength
- Real wood core will not warp or expand like particle board stock
- 3/4" thick stiles not thinner like some of the competition

Drawers are Constructed with Real Plywood

- Not particle board like some of the competition
- Drawer sides are lap jointed for extra strength and durability

Sunline Member Associations

As a member of the Recreational Vehicle Industry Association (RVIA) and the Canadian Standards Association (CSA)* Sunline manufactures its recreational vehicles to meet or exceed the requirements for the installation of plumbing, fuel burning, electrical and fire & life safety related items. In addition, each of our employees takes part in continuous improvement training and key personnel are certified in test procedures. Every model carries the RVIA or CSA logos proudly and Sunline maintains one of the best inspection records in the industry.



*Not all models are available in Canada. See your dealer for information on which models are CSA approved and if there are any differences between those mentioned in this brochure. Note: Due to Canadian code, 4" in length must be added to all CSA travel trailer A-frames. This extra length may slightly affect hitch and axle weight figures. To meet CSA standards, some standard features on certain models may be different.

Modifications for the Handicapped

Certain model floorplans can be modified to meet the needs of the handicapped. See your dealer for more information.

SUNLINE IS A PROUD SUPPORTER OF THE Go RVing- CAMPAIGN!

Recreation Vehicles. Wherever you go, you're always at home.™

Tow Vehicle Specifications Guide

Listed below are towing specifications for many popular tow vehicles. These weights are the maximum for the respective models and certain optional equipment may be required to meet these ratings. Be sure to check with your automotive dealer for exact specifications.

Selected 1998 Tow Ratings

Vehicle	Engine	Tow Limit	Vehicle	Engine	Tow Limit
Acura SLX	3.2 V-6	5,000	Honda Passport	3.2 V-6	4,500
Cadillac DeVille/All	4.6 V-8	3,000	Infiniti QX4	3.3 V-6	5,000
Chevrolet/GMC Astro/Safari (AWD)	4.3 V-6	5,000	Isuzu Hombre/Rodeo	2.2/2.6 I-4	2,000
Astro/Safari (RWD)	4.3 V-6	5,500	Rodeo	3.2 V-6	4,500
Blazer/Jimmy	4.3 V-6	5,500	Trooper	3.2 V-6	5,000
C1500 Reg/Ext Cab	4.3 V-6	5,000	Hombre	4.3 V-6	5,500
C1500 Reg/Ext Cab	5.0 V-8	6,500	Jeep Cherokee/Wrangler	2.5 I-4	2,000
C1500 Reg/Ext Cab	5.7 V-8	7,000	Cherokee/Grand Cherokee	4.0 I-6	5,000
Express/Savana/G1500	4.3 V-6	4,500	Grand Cherokee	5.2 V-8	6,700
Express/Savana/G1500	5.0 V-8	5,000	Grand Cherokee Limited (4WD)	5.9 V-8	5,000
Express/Savana/G1500	5.7 V-8	6,500	Wrangler	4.0 I-6	2,000
K1500 Reg/Ext Cab (4WD)	4.3 V-6	5,000	Land Rover Discovery	All	5,500
K1500 Reg/Ext Cab (4WD)	5.0 V-8	6,000	Range Rover	All	6,500
S-series/Savana	2.2 I-4	2,000	Lexus LS/ES Models	All	2,000
S-series/Savana	4.3 V-6	6,000	LX450	4.5 I-6	5,000
Suburban C1500	5.7 V-8	6,500	Lincoln Continental/Mark VIII Navigator	4.6 V-8	2,800
Suburban C1500	6.5 TD*	5,500	Mazda B3000	3.0 V-6	4,000
Tahoe/Yukon	5.7 V-8	7,000	B3000 (4WD)	3.0 V-6	3,700
Tahoe/Yukon (4WD)	6.5 TD*	7,000	B4000	4.0 V-6	6,000
Venture	3.4 V-6	3,500	B4000 (4WD)	4.0 V-6	5,700
Dodge Caravan	2.4 I-4	2,000	MPV	3.0 V-6	4,300
Caravan	3.3, 3.8 V-6	3,500	MPV (AWD)	3.0 V-6	4,000
Dakota	2.5 I-4	2,500	Mercedes Benz ML320	3.2 V-6	5,000
Dakota	3.9 V-6	5,500	Mercury Grand Marquis	4.6 V-8	2,000
Dakota	5.2 V-8	6,900	Mountaineer	4.0 V-6	5,860
Dakota Club Cab	3.9 V-6	5,200	Mountaineer (4WD)	4.0 V-6	5,640
Dakota Club Cab	5.2 V-8	6,700	Mountaineer	5.0 V-8	6,700
Dakota	5.9 V-8	6,800	Mountaineer (AWD)	5.0 V-8	6,460
Dakota (4WD)	3.9 V-6	5,200	Villager	3.0 V-6	3,500
Dakota (4WD)	5.2 V-8	6,500	Ford Club Wagon	4.2 V-6	4,700
Dakota (4WD) Club Cab	3.9 V-6	5,000	Club Wagon	4.6 V-8	6,100
Dakota (4WD) Club Cab	5.2 V-8	6,400	Club Wagon Reg	5.4 V-8	7,000
Durango (4WD)	3.9 V-6	4,400	Crown Victoria	4.6 V-8	2,000
Durango (4WD)	5.2 V-8	5,600	Expedition (4WD)	5.4 V-8	7,900
Durango (4WD)	5.9 V-8	7,300	Explorer 2 Dr	5.0 V-8	6,700
Rem (4WD) 1500	5.2 V-8	7,800	Explorer 4 Dr	5.0 V-8	6,700
Rem (4WD) 1500 All Cabs	5.9 V-8	7,300	Explorer 4 Dr (4WD)	5.0 V-8	6,700
Rem Wagon B1500	3.9 V-6	4,800	Explorer 4 Dr (4WD)	5.0 V-8	6,700
Rem Wagon B1500	5.2 V-8	6,200	F-150 (4WD)	4.2 V-6	5,400
Ford Club Wagon	4.2 V-6	4,700	F-150 (4WD)	4.6 V-8	6,800
Club Wagon	4.6 V-8	6,100	F-150 (4WD)	5.4 V-8	7,800
Club Wagon Reg	5.4 V-8	7,000	F-150 SuperCab	4.2 V-6	5,600
Crown Victoria	4.6 V-8	2,000	F-150 SuperCab	4.6 V-8	7,000
Nissan Pathfinder	3.3 V-6	6,000	F-150 SuperCab	5.4 V-8	8,000
			F-150 SuperCab (4WD)	4.6 V-8	6,600
			F-150 SuperCab (4WD)	5.4 V-8	7,700
			Ranger	2.5 I-4	2,220
			Ranger	3.0 V-6	4,320
			Ranger	4.0 V-6	6,000
			Ranger (4WD)	3.0 V-6	4,340
			Ranger (4WD)	4.0 V-6	5,800
			Ranger SuperCab	3.0 V-6	3,960
			Ranger SuperCab	4.0 V-6	5,990
			Ranger SuperCab (4WD)	3.0 V-6	4,180
			Ranger SuperCab (4WD)	4.0 V-6	5,640
			Windstar	3.0 V-6	2,000
			Windstar	3.8 V-6	3,500
			Frontier	2.4 I-4	3,500
			Quest	3.0 V-6	3,500
			Oldsmobile Bravada	4.3 V-6	5,000
			Silhouette	3.4 V-6	3,500
			Plymouth Voyager (FWD)	3.0 V-6	2,000
			Voyager (FWD)	3.3 V-6	3,500
			Pontiac Trans Sport	3.4 V-6	3,500
			Toyota 4Runner	2.7 I-4	3,500
			4Runner	3.4 V-6	5,000
			Land Cruiser	4.7 V-8	5,500
			Sienna	3.0 V-6	3,500
			Tacoma	All I-4	3,500
			Tacoma	3.4 V-6	5,000
			T100	2.7 I-4	4,000
			T100 All Cabs	3.4 V-6	5,200
			Volkswagen EuroVan	All	4,460
			Volvo All	All	3,300

*TD means turbodiesel

Your Safety Comes First

Your safety and satisfaction when towing depend upon the proper match of tow vehicle to RV and the proper installation and use of correct trailer towing accessories, such as hitch, sway and brake controls. Be sure you consult your car or truck dealer as well as your RV and hitch dealer for proper equipment selection. When loading your RV, make sure you practice proper weight distribution and load capacity for the best towing results.

We Stand Behind Our Product

Sunline has a strong 24 year history in the industry. We provide a warranty which covers every unit for 24 months (two years from the date of purchase) against defects in materials and workmanship. Separate manufacturers' warranties cover various components in the unit. Ask your dealer for a copy of Sunline's complete warranty policy.

Owner Benefits

With the purchase of any new Sunline Travel Trailer, you will receive a complimentary one year membership for an RRR, RV Emergency Road Service Plan. In addition, you will have the opportunity to join Sunline's Owner's Club, The Sunliners, managed and operated by a national association of fifth wheel and travel trailer owners, FTTA (Family Travel Trailer Association). The people at FTTA will be happy to talk with you about planned outings, newsletters, etc. for The Sunliners. Contact them at 800-603-1101. For more information, see your dealer or contact Sunline.

Note: Sunline's policy of continual design and manufacturing improvements requires that models, specifications, equipment, interior materials and prices be subject to change without notice. In addition, Sunline reserves the right to discontinue models without notice or obligation and to improve models without incorporating these changes in similar models produced at an earlier date.





245 South Muddy Creek Road
Denver, Pennsylvania 17517-9773



*Bring your pets. Bring your kids or grandkids. Travel as a pair
or with the whole gang. Nothing is as flexible as your Sunline.*

Pack your gear once, travel where the road leads and enjoy the ride.