

2 0 0 1 M O U N T A I N A I R E



F I F T H W H E E L

N E W M A R C O R P O R A T I O N



"HONESTY IS THE FIRST CHAPTER
IN THE BOOK OF WISDOM."

THOMAS JEFFERSON

RELIABILITY.

Even in today's world, some things don't change. Whether you travel the Grand Tetons, the Rockies or the Catskills, you'll find one thing in common. Mountains like these exude permanence. They will be there for you for a very long time. You can rely on them just like you can rely on Newmar quality and craftsmanship. When we build the Mountain Aire Fifth Wheel, we build it to last, like the mountains – and like our commitment. For a very long time.

If you're considering Newmar's Mountain Aire Fifth Wheel, you may have a lot of experience with towable RVs. You're looking for comfort, for room, for a well-mannered suspension, smooth towing and cargo capacity. You expect quality and you expect reliability.

We wouldn't build it any other way. We know you're counting on us.

The Mountain Aire provides reliability with Rubber Torsion Suspension, a 12-inch I-beam frame, full-height outrigger storage, 16-inch on-center aluminum stud sidewall framing, heated-insulated-enclosed holding tanks, flat-floor power slideouts and true central air conditioning.

It's nice to know that there are still things you can rely on. Like our devotion to craftsmanship. Like our attention to every detail. Like the mountains. Like Mountain Aire.

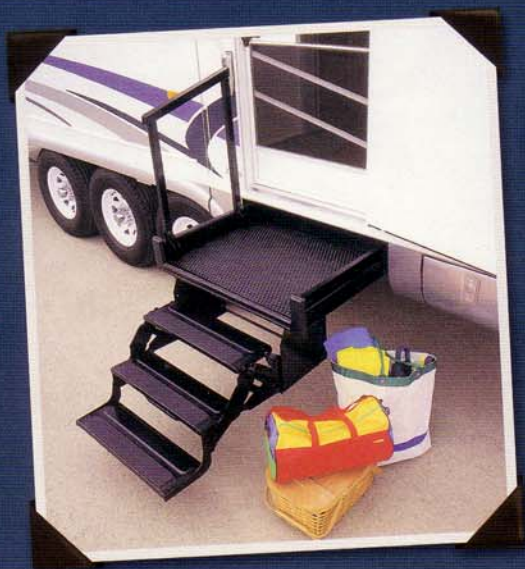
NEWMAR QUALITY: A WAY OF LIFE.



THE MOUNTAIN AIRE FIFTH WHEEL



CONFIDENCE IS A STANDARD FEATURE.



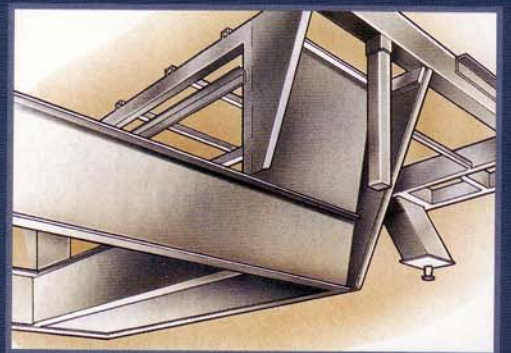
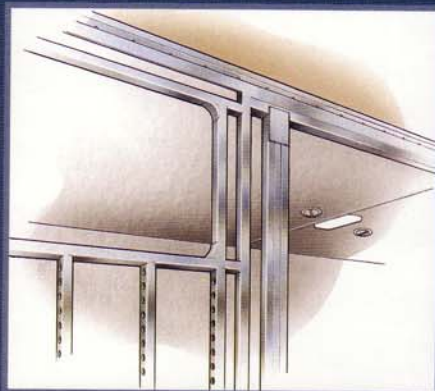
THE OPTIONAL POWER PORCH FEATURE
IS A NEWMAR EXCLUSIVE.

You can count on Mountain Aire. Each one is carefully constructed because we know you are putting your trust in us. That's something we take to heart. With Mountain Aire, you're traveling in style with substance. Style that lasts. It's comforting to know that, like the mountains, Newmar and Mountain Aire will be there for you, year after year.

MODEL SHOWN IS MAFW 38KSWB.



ALL NEWMAR PRODUCTS COME WITH 16-INCH ON-CENTER ALUMINUM FRAMING, PROVIDING STRENGTH, MORE ROOM FOR INSULATION AND THE SPACE TO RUN WIRING FOR ELECTRICAL OUTLET PLACEMENTS ON THE WALL, JUST LIKE YOU FIND AT HOME.



EVER NOTICE THAT I-BEAMS ARE USED WHEN CONSTRUCTING SKYSCRAPERS? THE I-BEAM IS STRONGER THAN A BOX-CHANNEL BEAM. THAT'S WHY NEWMAR USES A 12-INCH I-BEAM WHEN CONSTRUCTING ITS FIFTH-WHEEL FRAME.

THE MOUNTAIN AIRE FIFTH WHEEL



SURROUNDINGS THAT INSPIRE YOU.



A LARGE SLIDEOUT ACCOMMODATES A SOFA/
DINETTE IN THE PLATINUM DECOR WITH
OPTIONAL CHERRY WOODWORK.

Luxury is measured in the little things. Our attention to detail borders on obsession. Every experience in the Mountain Aire speaks to our care and craftsmanship. Preparing dinner in a galley designed for elegance and ease. The aroma of dinner in the oven. A dining area that's spacious and charming. Friends comfortably gathered at the table as daylight starts to fade. Little things. Life doesn't get any better than Mountain Aire.

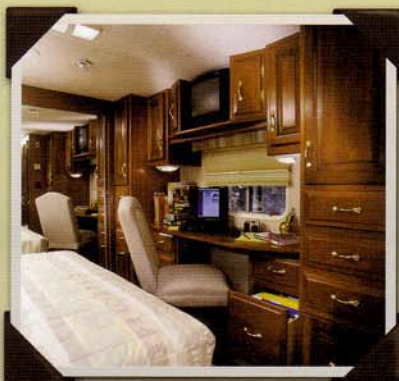


THE SPACIOUS INTERIOR OF THE MOUNTAIN AIRE FIFTH WHEEL SHOWING THE SOFA/DINETTE AND THE KITCHEN WITH AN ISLAND, SHOWN IN CASPIAN BLUE/OAK.



THE OPTIONAL CHERRY CABINETS SEGUE FROM KITCHEN TO ENTERTAINMENT CENTER FOR THE LIVING AREA.

THE WINDOW WELLS HOLD HIDDEN SLIDING VANITY MIRRORS AND AMPLE STORAGE SPACE.



FLEXSTEEL® GLIDER RECLINER AND OPTIONAL 32" COLOR TV SHOWN IN CASPIAN BLUE/OAK.

"WE MASS PRODUCE IN VOLUMES OF ONE."

"It is my deepest belief that we need to treat others as we treat ourselves, that I should treat our customers in the same manner as I would want to be treated. I believe these values helped make our company what it is today. They affect everything we do."



QUALITY DESIGN "We don't take short cuts, we construct. No matter what Newmar model our customers bought, they were assembled on the same production line, built with the same high standards and care."

TESTING "We test everything. All of our motorhomes, for instance, are tested for leaks, for alignment and for weight before they leave the assembly line. We want to be sure our products work the way our customers expect them to work."

INNOVATIONS "We innovate for the long-term quality of our customer's life. For example, there's our flat-floor power slide out, which gives our customers as much living space as possible. We offer practical features that will make your life in a Newmar RV easier."

INDIVIDUAL RESPONSIBILITY "If one of our quality-control inspectors finds a problem in the plumbing, they pull a worker from the plumbing team to fix it. We believe it's the team's responsibility, no one else's. Our workers feel a personal obligation to make a customer's RV the best possible."

NEWMAR QUALITY "When it's all said and done, this translates to Newmar Quality. Customers must be able to enjoy their Newmar RV for years to come. There is no other way for us."

When we say 'Newmar Quality: A Way of Life,' we truly live it."

Virgil Miller, President, Newmar Corp.



NEWMAR QUALITY: A WAY OF LIFE

355 N. DELAWARE STREET
NAPPANEE, INDIANA 46550
PH: 219.773.7791 • WWW.NEWMARCORP.COM

WE INVITE YOU TO VISIT OUR STATE-OF-THE-ART PRODUCTION FACILITY
IN NAPPANEE, INDIANA. PLANT TOURS ARE OFFERED
AT 10:00 A.M. AND 1:00 P.M., MONDAY THROUGH FRIDAY.

DON'T FORGET TO CHECK OUT THE NEWMAR COUNTRY KLUB.
ALL YOU NEED FOR ELIGIBILITY IS TO BE A PROUD OWNER OF ANY
OF THE FINE NEWMAR RECREATIONAL VEHICLES.

FOR A COMPLETE PHOTO GALLERY OF ALL NEWMAR PRODUCTS, VISIT
OUR WEBSITE: WWW.NEWMARCORP.COM

SOME FEATURES SHOWN IN OUR LITERATURE ARE OPTIONAL. COLORS AND FINISHES
ARE PHOTOGRAPHIC REPRESENTATIONS AND MAY APPEAR DIFFERENTLY WHEN VIEWING
ACTUAL MATERIALS. PRICES, SPECIFICATIONS AND FLOORPLANS ARE SUBJECT TO
CHANGE AT NEWMAR'S DISCRETION WITHOUT PRIOR WRITTEN NOTICE OR OBLIGATION.
PLEASE SEE YOUR DEALER FOR ACTUAL SAMPLES AND SPECIFICATIONS.

©2000 NEWMAR CORPORATION. PRINTED IN THE U.S.A. (6/00)

2001 MOUNTAIN AIRE



FIFTH WHEEL
SPECIFICATIONS



N E W M A R C O R P O R A T I O N

STANDARD FEATURES

AIR CONDITIONING & HEATING

- 2 - 30# LP Gas Bottles with Automatic Regulator
- 13,500 BTU Brisk® Central Air Conditioner
- LP Leak Detector

APPLIANCES & ACCESSORIES

- 10 Gallon Gas/Electric Water Heater - Direct Spark Ignition
- 22" Spacesaver Microwave
- Color TV in Entertainment Center
- 3-Burner Recessed Range with Glass Oven Door (electronic ignition)
- AM/FM Stereo with Cassette and CD Player
- Cable TV Connection with RG6 Coax
- Ceiling Fan in Living Room Area
- Dometic® 3862 Refrigerator (8 cu. ft.)
- Satellite Prep - Phone/TV Jack and Recept
- Telephone Connection with one Phone Jack
- TV Antenna with Power Booster & two Jacks

CABINETS & FURNITURE

- Flexsteel® Glider Recliner (one or two as shown on floor plan drawing)

- Corian® Countertop in Kitchen with Color Coordinated Edge and Acrylic sink
- Dinette Table with Hardwood Top and Four Chairs
- Drawers with Metal Guides
- Laminate Countertop with Hardwood Edge and Porcelain Lavatory in Bath
- Oak Hardwood Raised Panel Cabinet Doors

ELECTRICAL FEATURES

- 55-Amp Converter with Charger
- 12-Volt Battery
- 50-Amp Electrical Service with Flexible Cord
- Fluorescent Ceiling Lights in Living Room and Kitchen Area
- Lights in Wardrobes

EXTERIOR FEATURES

- BriteTek Roof with 7MM Decking
- Gel-Coated Fiberglass End Caps
- Gel-Coated Fiberglass Exterior Sides
- Power Front Jacks
- Roof Rack & Ladder
- Snaps for Fifth Wheel Jacks
- Stabilizer Jacks (one pair)

INTERIOR FEATURES

- Carpeting - Nylon with Scotchguard® Stain Release
- Day/Night Pleated Window Shades and Lined Drapes and Valances
- Quilted Bedspread with Pillow Shams, Matching Bed Skirt & Accent Pillow
- Woven Soft Touch Ceiling

PLUMBING/BATH FEATURES

- Aqua Magic IV® Stool
- Fiberglass Tub/Shower with Glass Shower Door
- Monitor Panel
- Sewage Holding Tank Rinse
- Water Heater Bypass System

CONSTRUCTION FEATURES

- 12" I-Beam Frame with Molded Wrap Storage Doors
- Aluminum Frame Sidewalls & Roof Construction, 16" On Center
- Slide Out Tray in Rear Bumper with Spare Tire

WINDOWS, AWNINGS & VENTS

- Power Vent in Bath Area with Wall Switch
- A&E 8500 Side Awning

OPTIONAL FEATURES

APPLIANCES & ACCESSORIES

- Dometic® 1062 Refrigerator (10 cu. ft.) [91 lbs.]
- Icemaker added to Dometic® Refrigerator [5 lbs.]
- Sears Washer/Dryer [232 lbs.]

CABINETS & FURNITURE

- Cherry Hardwood Cabinets [25 lbs.]
- Frosted Maple Hardwood Cabinets [25 lbs.]
- Oak Hardwood Cabinets [25 lbs.]
- Snow Maple Cabinets [0 lbs.]

ELECTRICAL FEATURES

- 30" Convection Microwave with three Burner Cooktop [13 lbs.]
- Battery Disconnect Switch [1 lb.]
- Exterior Security Lights (one installed on each side) [2 lbs.]

INTERIOR FEATURES

- Ceramic Floor Tile in Bath Area [75 lbs.]
- Ceramic Floor Tile in Kitchen and Foyer Area [35 lbs.]
- Simulated Plank Floor in Kitchen and Foyer Area [30 lbs.]
- Lambrequin Window Treatment [20 lbs.]

PLUMBING/BATH FEATURES

- China Stool with Spray Attachment [31 lbs.]

WINDOWS, AWNINGS & VENTS

- Fan-tastic Vent with Rain Sensor in Kitchen [11 lbs.]
- Double Pane Tinted Safety Glass Windows [110 lbs.]
- Lighted Acrylic Assist Handle at Entrance Door [0 lbs.]

- Pull Out Landing with Railing & Manual Step [120 lbs.]
- Skylight in Bathroom (located above tub/shower) [2 lbs.]

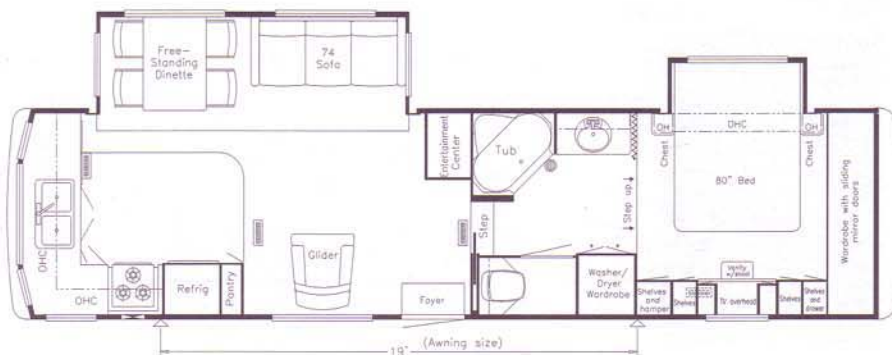
TOWABLE CHASSIS FEATURES

- Independent MOR/ryde® Suspension [30 lbs.]
- Tandem Axle Dual Wheels MOR/ryde® [212 lbs.]

SPECIFICATIONS

MODEL 2001 MAFW 34BKWB

Tire Size:	235-85 R16 G
GAWR:	7,000
GVWR:	16,250
Approx. Length:	35' 11"
Approx. Height:	12' 3"
Width:	101"
Approx Dry Weight:	12,598
Approx Hitch Weight:	2,520
Fresh Water:	75
Grey:	92
Sewage Cap:	50
Approx. Hitch Height:	47"
Heat Cap:	42,000



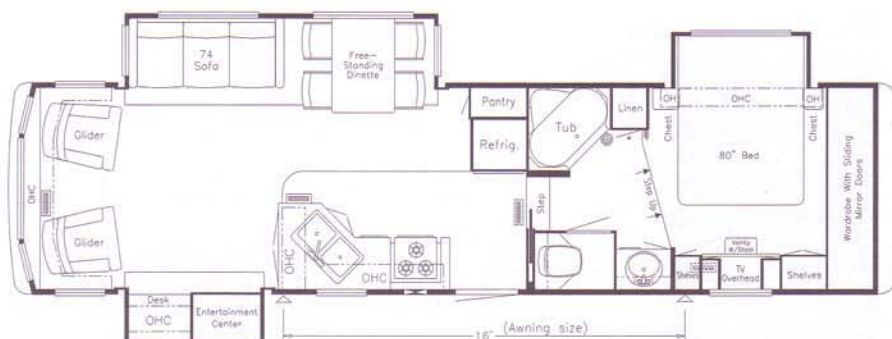
MODEL 2001 MAFW 34RDCK

Tire Size:	235-85 R16 G
GAWR:	7,000
GVWR:	16,250
Approx. Length:	35' 11"
Approx. Height:	12' 3"
Width:	101"
Approx Dry Weight:	12,684
Approx Hitch Weight:	2,156
Fresh Water:	75
Grey:	92
Sewage Cap:	50
Approx. Hitch Height:	47"
Heat Cap:	42,000



MODEL 2001 MAFW 35BLDS

Tire Size:	235-85 R16 G
GAWR:	7,000
GVWR:	16,250
Approx. Length:	35' 10"
Approx. Height:	12' 3"
Width:	101"
Approx Dry Weight:	13,190
Approx Hitch Weight:	2,374
Fresh Water:	75
Grey:	92
Sewage Cap:	40
Approx. Hitch Height:	47"
Heat Cap:	42,000



SPECIFICATIONS

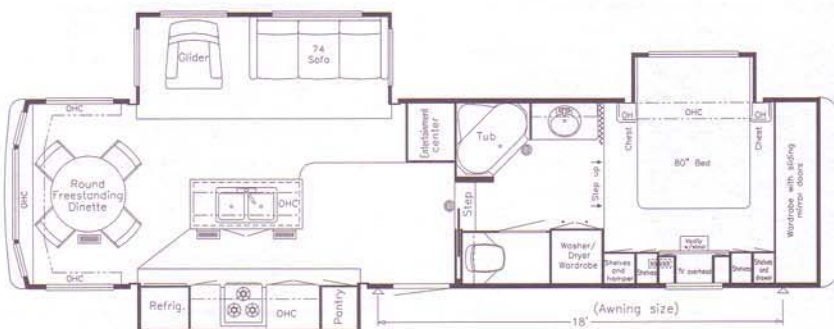
MODEL 2001 MAFW 35LKSA

Tire Size:	235-85 R16 G
GAWR:	7,000
GVWR:	16,250
Approx. Length:	36' 4"
Approx. Height:	12' 3"
Width:	101'
Approx Dry Weight:	13,161
Approx Hitch Weight:	2,408
Fresh Water:	75
Grey:	92
Sewage Cap:	50
Approx. Hitch Height:	47"
Heat Cap:	42,000



MODEL 2001 MAFW 36BDD5

Tire Size:	235-85 R16 E
GAWR:	6,000
GVWR:	18,500
Approx. Length:	37' 6"
Approx. Height:	12' 3"
Width:	101'
Approx Dry Weight:	14,451
Approx Hitch Weight:	2,746
Fresh Water:	75
Grey:	92
Sewage Cap:	50
Approx. Hitch Height:	47"
Heat Cap:	55,000



MODEL 2001 MAFW 36BLAK

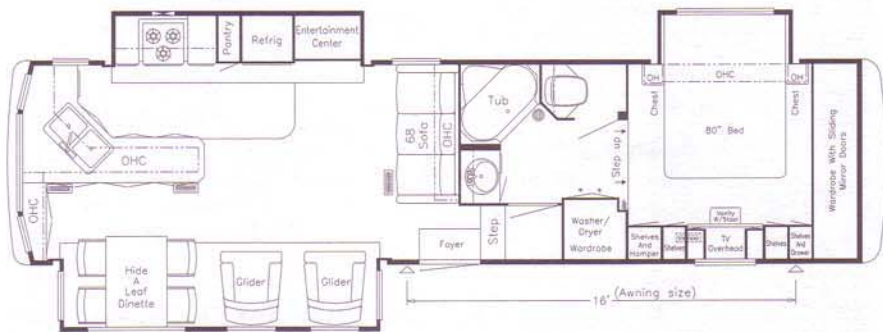
Tire Size:	235-85 R16 G
GAWR:	7,000
GVWR:	16,250
Approx. Length:	37' 6"
Approx. Height:	12' 3"
Width:	101'
Approx Dry Weight:	13,295
Approx Hitch Weight:	1,994
Fresh Water:	75
Grey:	92
Sewage Cap:	50
Approx. Hitch Height:	47"
Heat Cap:	55,000



SPECIFICATIONS

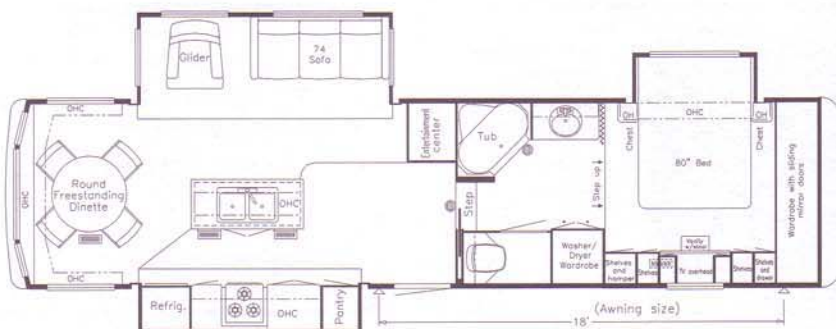
MODEL 2001 MAFW 35LKSA

Tire Size:	235-85 R16 G
GAWR:	7,000
GVWR:	16,250
Approx. Length:	36' 4"
Approx. Height:	12' 3"
Width:	101'
Approx Dry Weight:	13,161
Approx Hitch Weight:	2,408
Fresh Water:	75
Grey:	92
Sewage Cap:	50
Approx. Hitch Height:	47"
Heat Cap:	42,000



MODEL 2001 MAFW 36BDDS

Tire Size:	235-85 R16 E
GAWR:	6,000
GVWR:	18,500
Approx. Length:	37' 6"
Approx. Height:	12' 3"
Width:	101'
Approx Dry Weight:	14,451
Approx Hitch Weight:	2,746
Fresh Water:	75
Grey:	92
Sewage Cap:	50
Approx. Hitch Height:	47"
Heat Cap:	55,000



MODEL 2001 MAFW 36BLAK

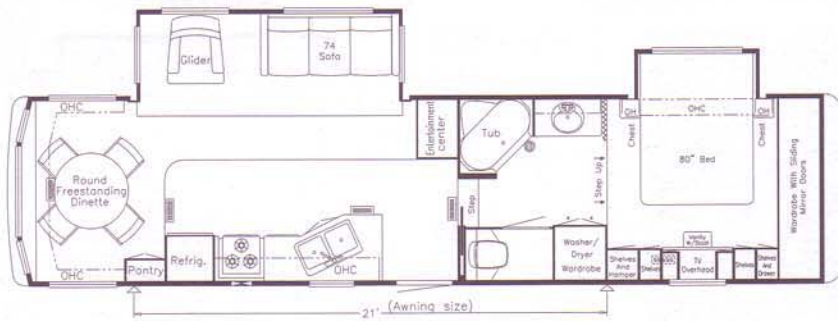
Tire Size:	235-85 R16 G
GAWR:	7,000
GVWR:	16,250
Approx. Length:	37' 6"
Approx. Height:	12' 3"
Width:	101'
Approx Dry Weight:	13,295
Approx Hitch Weight:	1,994
Fresh Water:	75
Grey:	92
Sewage Cap:	50
Approx. Hitch Height:	47"
Heat Cap:	55,000



SPECIFICATIONS

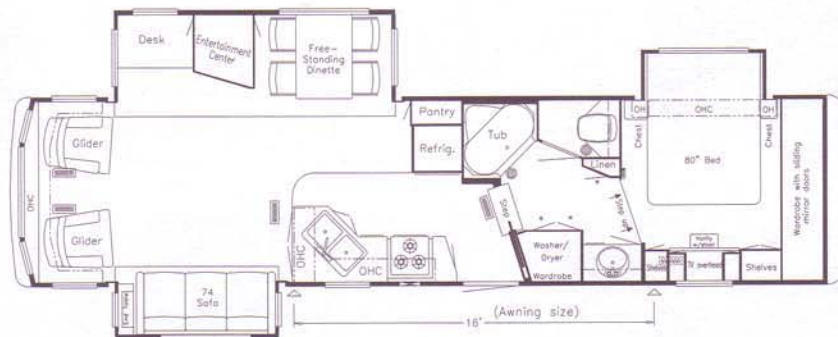
MODEL 2001 MAFW 36RDSK

Tire Size:	235-85 R16 G
GAWR:	7,000
GVWR:	16,250
Approx. Length:	37' 6"
Approx. Height:	12' 3"
Width:	101"
Approx Dry Weight:	13,157
Approx Hitch Weight:	2,237
Fresh Water:	75
Grey:	92
Sewage Cap:	50
Approx. Hitch Height:	47"
Heat Cap:	55,000



MODEL 2001 MAFW 36RLFB

Tire Size:	235-85 R16 E
GAWR:	6,000
GVWR:	18,500
Approx. Length:	37' 6"
Approx. Height:	12' 3"
Width:	101"
Approx Dry Weight:	14,131
Approx Hitch Weight:	2,826
Fresh Water:	75
Grey:	82
Sewage Cap:	50
Approx. Hitch Height:	47"
Heat Cap:	55,000



MODEL 2001 MAFW 38KSWB

Tire Size:	235-85 R16 E
GAWR:	6,000
GVWR:	18,500
Approx. Length:	38' 1"
Approx. Height:	12' 3"
Width:	101"
Approx Dry Weight:	14,450
Approx Hitch Weight:	2,601
Fresh Water:	75
Grey:	92
Sewage Cap:	50
Approx. Hitch Height:	47"
Heat Cap:	55,000

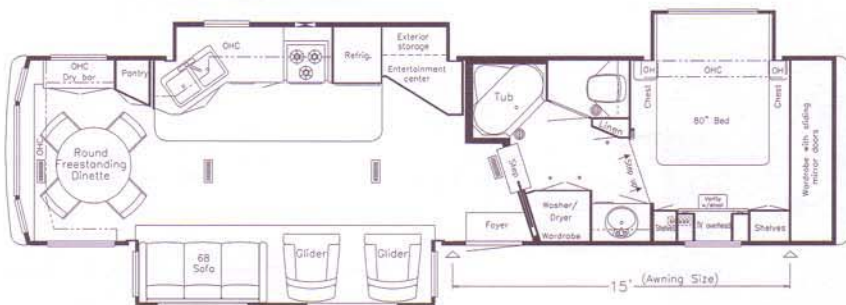


THE MOUNTAIN AIRE FIFTH WHEEL

SPECIFICATIONS

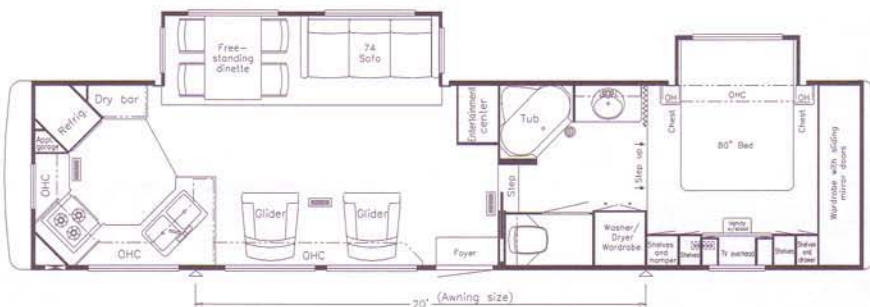
MODEL 2001 MAFW 38RDKS

Tire Size:	235-85 R16 E
GAWR:	6,000
GVWR:	18,500
Approx. Length:	38' 1"
Approx. Height:	12' 3"
Width:	101"
Approx Dry Weight:	14,611
Approx Hitch Weight:	2,513
Fresh Water:	75
Grey:	82
Sewage Cap:	50
Approx. Hitch Height:	47"
Heat Cap:	55,000



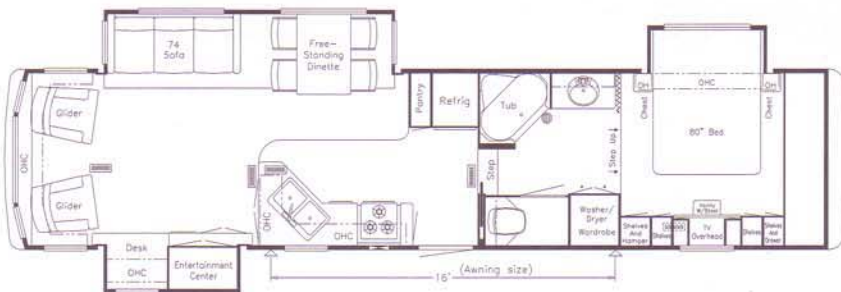
MODEL 2001 MAFW 39BRTC

Tire Size:	235-85 R16 E
GAWR:	6,000
GVWR:	18,500
Approx. Length:	39' 5"
Approx. Height:	12' 3"
Width:	101"
Approx Dry Weight:	14,361
Approx Hitch Weight:	2,154
Fresh Water:	75
Grey:	92
Sewage Cap:	50
Approx. Hitch Height:	47"
Heat Cap:	55,000



MODEL 2001 MAFW 39RLSE

Tire Size:	235-85 R16 E
GAWR:	6,000
GVWR:	18,500
Approx. Length:	39' 5"
Approx. Height:	12' 3"
Width:	101"
Approx Dry Weight:	14,473
Approx Hitch Weight:	2,316
Fresh Water:	75
Grey:	92
Sewage Cap:	50
Approx. Hitch Height:	47"
Heat Cap:	55,000



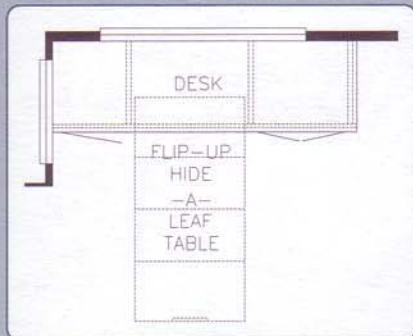
MODEL 2001 MAFW40CKDA

Tire Size:	235-85 R16 E
GAWR:	6,000
GVWR:	18,500
Approx. Length:	41' 3"
Approx. Height:	12' 3"
Width:	101"
Approx Dry Weight:	14,162
Approx Hitch Weight:	2,266
Fresh Water:	75
Grey:	92
Sewage Cap:	50
Approx. Hitch Height:	47"
Heat Cap:	55,000



* LENGTHS, HEIGHTS, WIDTHS AND DRY WEIGHTS ARE APPROXIMATE. WEIGHT WILL VARY BASED ON OPTIONAL EQUIPMENT ADDED TO THE ABOVE BASE WEIGHT.

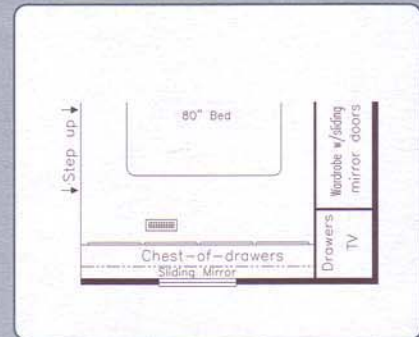
FLOORPLAN OPTIONS



K122
COMBINATION DESK/DINETTE TABLE
IN LIEU OF STANDARD (DOORSIDE SHOWN)
MAFW: 34BKWB, 35BLDS, 35LKSA,
36BLAK, 36RDSK, 36RLFB,
38KSWB, 39BRTC, 39RLSE,
40CKDA



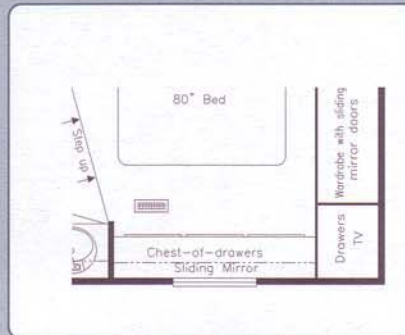
K561
WALKTHROUGH BATH W/COMPUTER DESK
IN LIEU OF VANITY
MAFW: 34BKWB, 34RDCK, 35LKSA,
36BDDS, 36BLAK, 36RDSK,
38KSWB, 39BRTC, 39RLSE,
40CKDA



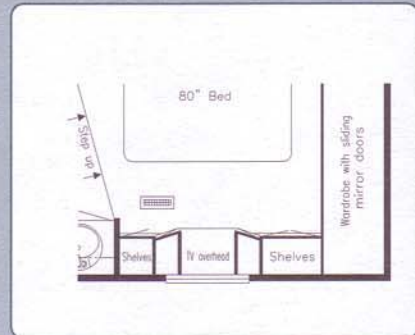
M430
WALKTHROUGH BATH W/DRESSER CENTER
IN LIEU OF VANITY CENTER
MAFW: 34BKWB, 34RDCK, 35LKSA,
36BDDS, 36BLAK, 36RDSK,
38KSWB, 39BRTC, 39RLSE,
40CKDA



M466
WALKTHROUGH BATH W/VANITY OVER
DRESSER IN LIEU OF VANITY CENTER
MAFW: 34BKWB, 34RDCK, 35LKSA,
36BDDS, 36BLAK, 36RDSK,
38KSWB, 39BRTC, 39RLSE,
40CKDA



M759
DRESSER CENTER IN LIEU OF VANITY
CENTER
MAFW: 35BLDS, 36RLFB, 38RDKS



M764
VANITY OVER DRESSER CENTER IN LIEU
OF VANITY
MAFW: 35BLDS, 36RLFB, 38RDKS



P160
UNENCLOSED STOOL OPTION
MAFW: 34BKWB, 36BDDS, 36BLAK,
36RDSK, 38KSWB, 39BRTC,
39RLSE, 40CKDA



P180
ENCLOSED STOOL ROOM W/STRAIGHT
SHOWER
MAFW: 34RDCK

THE MOUNTAIN AIRE FIFTH WHEEL

DON'T FORGET TO CHECK OUT THE NEWMAR KOUNTRY KLUB. ALL YOU NEED FOR ELIGIBILITY IS TO BE A PROUD OWNER OF ANY OF THE FINE NEWMAR RECREATIONAL VEHICLES.

WE INVITE YOU TO VISIT OUR STATE-OF-THE-ART PRODUCTION FACILITY IN NAPPANEE, INDIANA. PLANT TOURS ARE OFFERED AT 10:00 A.M. AND 1:00 P.M., MONDAY THROUGH FRIDAY.



NEWMAR QUALITY: A WAY OF LIFE

355 N. DELAWARE STREET
NAPPANEE, INDIANA 46550

PH: 219.773.7791 • WWW.NEWMARCORP.COM

PRICES, SPECIFICATIONS AND FLOORPLANS ARE SUBJECT TO CHANGE AT NEWMAR'S DISCRETION WITHOUT PRIOR WRITTEN NOTICE OR OBLIGATION. PLEASE SEE YOUR DEALER FOR ACTUAL SAMPLES AND SPECIFICATIONS. ©2000 NEWMAR CORPORATION. PRINTED IN THE U.S.A. (6/00)