



Damon
Value by Design

ESCAPER 2002

Damon
Value by Design

Damon Corporation • P.O. Box 2888 • Elkhart, IN 46515
Literature or Dealers: 219-389-0179 or 1-800-577-5692
Customer service 800-860-3812.
www.DamonRV.com

IT'S NOT SO MUCH ABOUT GETTING AWAY.
IT'S MORE ABOUT ARRIVING.

You've got places to go. Things to do. New worlds to explore. Old dreams to make true. And nothing brings you closer to your dreams than a 2002 Escaper™ Diesel Motorhome.

For starters, it's priced to go. Damon's long manufacturing experience has taught the company how to build for value and pass the savings on. Result? You get a gorgeous, luxuriously appointed RV that often surpasses those costing \$60,000 to \$100,000 more than Escaper. This is one diesel motorhome that truly escapes the bounds of conventional wisdom on what a luxury RV should cost. And you're the richer for it.

- Powerful diesel engine and chassis combinations put the "escape" in Escaper — just take a look at page 5.
- Escaper's road performance is exceptional, thanks to a 6-speed Allison® transmission, full air brakes with antilock technology, air-ride suspension and a Jacobs® exhaust brake.
- A custom-designed front entrance door makes it easier to get into and out of the coach than a conventional cab door.
- Escaper also gives you the convenience and added security of a keyless entry system.
- In the cab, an optional buddy chair with a power footrest provides superior passenger comfort.
- An electric rear-view monitor system helps you back up safely and easily.
- Ducted defrosters quickly clear the windshield of condensation or ice — and keep it clear.
- Electric sun visors let you adjust for glare easily.



Model 3979 • Central Park Interior • Maple ▶





Model 3977 • Manhattan Interior • Oak

◀ Model 3979 • Central Park Interior • Maple

- The cab overhead includes a top-flight entertainment system with a VCR and a 25" color TV.
- A space-adding slideout with flush-floor extension gives you more freedom to move about, stretch out and relax inside.
- A unique StepSaver™ kitchen puts everything well within reach to make meal preparation quick and easy. You'll especially like the standard full pantry (which is not available if you elect to purchase the optional side-by-side, icemaker refrigerator).
- Escaper's kitchen and bathroom feature beautiful Corian® countertops with stylish integrated sinks.
- Fabric-lined overhead cabinets reduce interior noise during travel.
- Fashionable ceramic tile flooring, standard, lends beauty and functionality to the kitchen and bath areas.
- Escaper provides an incredible amount of storage space — including a massive pass-through basement storage compartment (thanks to its raised-rail chassis).
- Ever wish you could watch your favorite TV shows or a video while you relax outside? Now you can ... with Escaper's optional exterior entertainment center. It features a 13" color TV and CD player with four speakers.
- If it's uncommon comfort you're after, you'll want to option the extra-wide, ultra-leather J-lounger.
- An optional love seat expands your seating capacity in the living room.
- Plush, padded carpeting in the living room and bedroom areas not only looks great but helps insulate and dampen sound. The living room boasts a fashionable, decor-specific, sculptured-carpet area.

- For the best in entertainment, Escaper has an exceptional Pioneer® audio system with four speakers and a subwoofer.

- Escaper also offers an optional 5.1 digital surround-sound home-theater package that includes a Pioneer receiver and DVD player. Pop some popcorn, call the neighbors and settle in for a veritable “at the movies” experience!

- A standard 400-watt inverter helps power your stereo equipment.

- In the bathroom, you have the convenience of a taller, residential-style toilet.

- Now, whenever you pull into a campsite, you can have hot water on tap immediately with an optional MotorAid® 10-gallon gas/electric water heater. It actually uses Escaper’s engine to heat water while you drive.

- You’ll take comfort in knowing your 2002 Escaper has passed a strenuous 400-point inspection test as part of Damon’s StartRight Quality Assurance® program.

- Escaper also gives you the benefits of Damon’s exclusive Total Quality Service™ (TQS) initiative. Ask your dealer for details.



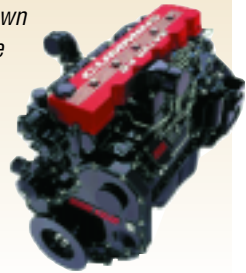
Manhattan Interior carpet sculpture



Model 3977 • Manhattan Interior • Oak ▶



The power to go where you want when you want. And to travel freely, without hassles. That's a big part of a motorhome's appeal. And nobody gives you the power like Damon. You'll feel it the moment you turn the key on one of our exceptional diesel engines. Escaper gives you a choice. We offer a 330-hp Caterpillar® diesel engine on a Freightliner® chassis ... and a 350-hp Cummins® engine on a Spartan® Mountain Master™ chassis. Either will supply the power you need to traverse the roughest, steepest, most challenging terrain. Note too that, unlike some other motorhome manufacturers who hobble together their own homemade chassis, we offer the solid dependability of genuine, brand-name, factory-built chassis. Truly, Escaper diesel delivers!



To keep your RV experience running smoothly and efficiently, whatever you expect from it, Damon gives you a choice of two top-performance generators: a 7.5-kW Onan® diesel ... or a 6.3-kW Onan® LP. Six-volt Thermoil® auxiliary batteries are also provided, as is a 75-amp converter and a 400-watt inverter (adding extra juice to the stereo system).



The aluminum-frame crowned roof features beaded block-foam insulation and a residential-styled ceiling.

Escaper's seamless, one-piece EPDM rubber roof is so resistant to sun damage and the elements that it comes with a full 12-year warranty. It also provides excellent thermal and acoustical insulation. Radius corners, along with the roof's crown, allow proper water runoff.

Escaper is satellite- and cable-TV-ready to increase your entertainment options.

Separate front door and patio awnings come with the option of electric remote-control operation.

An optional heat pump gives you greater comfort control in milder climates.

Hadley® air horns are "the sound of safety."

The electrical access compartment near the driver's window makes fuses easier to get at than those housed under the engine hood.

An optional chrome front mirror adds an extra touch of automotive flair. (Standard painted mirrors are shown here.)

Keyless entry adds convenience and security.

Walls and openings are aluminum-framed. Walls are also vacuum-bonded with beaded block-foam insulation.

An optional slideout tray in the basement storage compartment lets you carry a thousand pounds of belongings.

Powder-coated, white-framed, radius-corner windows virtually eliminate those annoying black streaks that run down the sides of RVs from weathered black window frames.

Escaper has a steel firewall and a steel-truss basement structure system; an insulated floor system with structurewood and beaded block-foam insulation; and a heated tank area with insulated doors.

Exclusively Escaper™

Don't "Bar-B-Q" – "RVQ" with Damon's optional outdoor barbecue grill! It attaches easily to a pre-installed exterior sidewall rail and a gas line. There's no messing with propane tanks and accessories. The durable baked-enamel finish cleans in a snap. And the grill stows in its own zippered bag in the basement storage compartment.



A raised-rail pass-through storage compartment gives you more room for gear — and easier access to it.



Top-flight entertainment is provided by the standard Pioneer® AM/FM/CD player with four speakers and a sub-woofer.

An optional entertainment package gives you more choices, including a Pioneer® home receiver and a DVD player.

Optional MotorAid® water heater actually uses Escaper's engine to heat water while you drive.



Beauty, Brawn and Benefits Galore

Advanced engineering. Computer-aided design. Innovative manufacturing technologies. And feedback from RVers just like you. All this has gone into the making of a 2002 Escaper Diesel Motorhome. You can see the difference it makes. No other motorhome in Escaper's class offers so impressive a range of features.



Saddle Brown

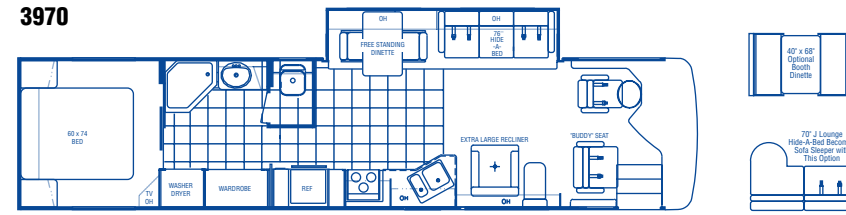


Steel Blue

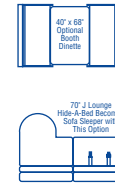


Taupe Frost

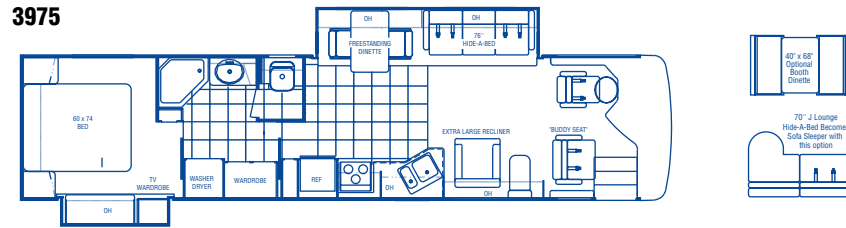
3970



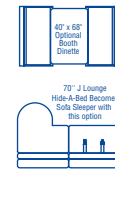
Diamond-bevel mirrored headboard • Double pantry



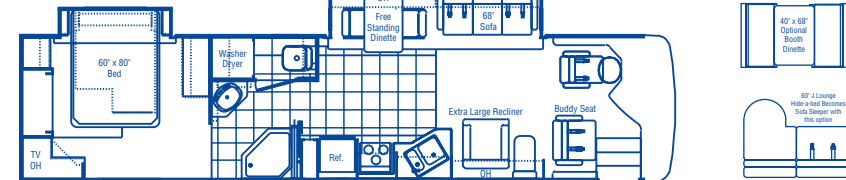
3975



Lots of closet space • Diamond-bevel mirrored headboard



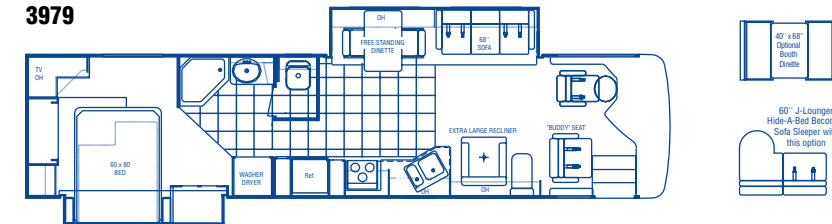
3977



19" TV in bedroom • Bedroom/Bathroom suite



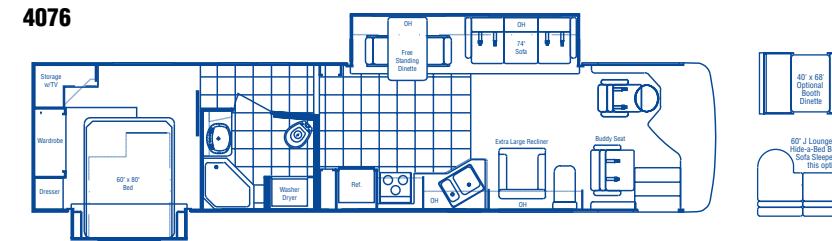
3979



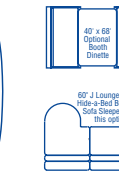
19" TV in bedroom • Bedroom/Bathroom suite • Double pantry



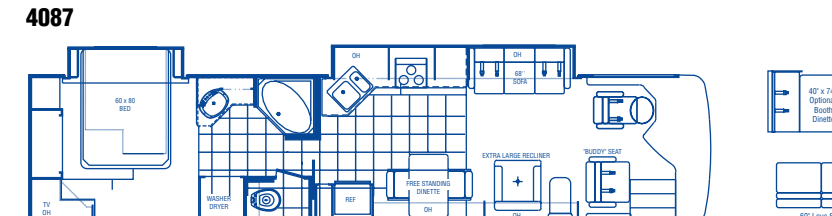
4076



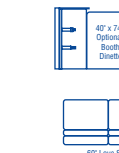
19" TV in bedroom • Bedroom/Bathroom suite • Fully enclosed bath



4087



Sofa bed • 19" TV in bedroom • Bedroom/Bathroom suite • Full-height fiberglass tub and shower



Décor ...

Damon's interior designers and engineers have created a choice of environments that not only help you feel right at home, but also lend a sense of personality to your Escaper. Fabric selections, trimwork, countertops, flooring and window treatments are carefully coordinated to provide a customized look — one that's fashionable, yet timeless; exciting, yet tasteful.

Floor Plans ...

Notions about what the RV life should entail are unique to every RVer. That's why Damon offers the 2002 Escaper in a variety of floor plans, with a number of useful options. Regardless of which floor plan you choose, you can be sure it's thoughtfully laid out to provide the roomiest, most comfortable, most convenient mobile living experience you've ever had.

Paint ...

Thanks to its clean, bold paint stylings, Escaper's exterior has a remarkably fluid, energized look befitting its diesel-power performance. Choose the color package that best suites your taste. It's sure to turn heads and win favorable reviews wherever you go.



Oak



Maple (optional)



Boardwalk



Central Park



Manhattan



Escaper Utilities	3970	3975	3977	3979	4076	4087
Air conditioner: 13,500-BTU ducted central front and rear	S	S	S	S	S	S
Air conditioner: low profile (N/A with 5-watt solar battery charger)	O	O	O	O	O	O
Heat pumps (2) with 15,000-BTU A/C and 12,700-BTU heat	O	O	O	O	O	O
5-watt chassis solar battery charger (N/A with low profile A/C or heat pump)	S	S	S	S	S	S
60-watt solar panel for house batteries	O	O	O	O	O	O
40,000-BTU electronic ignition floor-ducted furnace	S	S	S	S	S	S
40,000/25,000-BTU dual-burn electronic ignition floor-ducted furnace	O	O	O	O	O	O
10-gallon gas/electric water heater	S	S	S	S	S	S
Motoraid® 10-gallon gas/electric water heater	O	O	O	O	O	O
Water heater bypass kit	S	S	S	S	S	S
Generator: Onan® 6.3 kW LP	S	S	S	S	S	S
Generator: Onan® 7.5 kW diesel	O	O	O	O	O	O
2500-watt inverter	O	O	O	O	O	O
400-watt entertainment inverter	S	S	S	S	S	S
Solid-state 75-amp, 12-volt power converter	S	S	S	S	S	S
12-volt demand water pump	S	S	S	S	S	S
6-volt Thermoil® auxiliary batteries (2) Std. (4) with 2500-watt inverter	S	S	S	S	S	S
Electronic battery distribution center	S	S	S	S	S	S
Battery disconnect	S	S	S	S	S	S
50-amp, 120-volt service	S	S	S	S	S	S
50-amp, 120-volt power cord	S	S	S	S	S	S
Exterior GFCI receptacle	S	S	S	S	S	S
Enclosed heated potable and holding tanks	S	S	S	S	S	S
Blackwater tank flush	S	S	S	S	S	S
City water hookup	S	S	S	S	S	S
Water filtration system	S	S	S	S	S	S
Washer/dryer prep	S	S	S	S	S	S
Washer/dryer combo	O	O	O	O	O	O
Telephone hookup	S	S	S	S	S	S
Cable TV/satellite hookup	S	S	S	S	S	S
Pre-wired for roof-mounted satellite dish	S	S	S	S	S	S
DSS manual satellite	O	O	O	O	O	O
Exterior shower	S	S	S	S	S	S
Carbon monoxide detector	S	S	S	S	S	S
LP gas detector	S	S	S	S	S	S
Smoke detector	S	S	S	S	S	S

Escaper Cockpit	3970	3975	3977	3979	4076	4087
Molded ABS dash	S	S	S	S	S	S
Burl instrument panel	S	S	S	S	S	S
Full instrumentation	S	S	S	S	S	S
Electronically controlled dash air conditioning	S	S	S	S	S	S
Premium AM/FM/radio with CD	S	S	S	S	S	S
Premium AM/FM/cassette radio with multi-disk CD changer	O	O	O	O	O	O
VA70 GPS/audio with monitor	O	O	O	O	O	O
Premium speaker system with powered subwoofer	S	S	S	S	S	S
Electronic cruise control	S	S	S	S	S	S
Power steering	S	S	S	S	S	S
Padded steering wheel	S	S	S	S	S	S
Douglas® tilt/telescoping steering column	S	S	S	S	S	S
Map lights	S	S	S	S	S	S
Auxiliary defroster system	S	S	S	S	S	S
Hadley® air horns	S	S	S	S	S	S
Tinted wrap-around windshield	S	S	S	S	S	S
Windshield privacy wrap	S	S	S	S	S	S
Front-mounted power mirrors	S	S	S	S	S	S
Chrome plated front-mounted power mirrors	O	O	O	O	O	O
Floor mats	S	S	S	S	S	S
Ultra-leather driver's seat with 8-way power	S	S	S	S	S	S
Ultra-leather passenger buddy-style seat with 8-way power	S	S	S	S	S	S
Ultra-leather passenger buddy-style seat with 8-way power and electric foot rest	O	O	O	O	O	O
3-point integrated seat and shoulder belts	S	S	S	S	S	S
Rosen® full-size sun visors	S	S	S	S	S	S
Carefree® electric sun visors with manual side shade	O	O	O	O	O	O
Back-up monitor system	S	S	S	S	S	S
Power flush-floor stepwell cover	S	S	S	S	S	S
Drink holders	S	S	S	S	S	S
Second generation automotive-style wiring harness	S	S	S	S	S	S

S = Standard O = Optional N/A = Not Available IPO = In Place Of

Escaper Chassis	3970	3975	3977	3979	4076	4087
330-hp Caterpillar® engine with 860 ft. lb. torque Freightliner® raised-rail chassis	O	O	O	O	N/A	N/A
350-hp Cummins® engine with 1050 ft. lb. torque Spartan® raised-rail chassis with Alcoa® wheels	S	S	S	S	S	S
In-block engine heater	S	S	S	S	S	S
Leece Neville® 160-amp, 12-volt alternator	S	S	S	S	S	S
Allison® MH-3000 automatic transmission – 6 speed	S	S	S	S	S	S
Exhaust brake	S	S	S	S	S	S
Full air brakes with auto slack adjusters front and rear	S	S	S	S	S	S
Wabco® antilock brakes	S	S	S	S	S	S
Midland® Pure-Air-Plus heated air dryer	S	S	S	S	S	S
Air suspension system	S	S	S	S	S	S
Independent front suspension (Spartan® only)	S	S	S	S	S	S
Bilstein® shock absorbers front and rear	S	S	S	S	S	S
22.5" radial tires	S	S	S	S	S	S
Leveling jacks	S	S	S	S	S	S
Front and rear mud flaps	S	S	S	S	S	S
Trailer hitch (5,000 lbs.)	S	S	S	S	S	S
Emergency start circuit	S	S	S	S	S	S
Under hood light	S	S	S	S	S	S
Layer of neoprene vibration dampener	S	S	S	S	S	S
Dual fuel fills	S	S	S	S	S	S

Escaper Bedroom	3970	3975	3977	3979	4076	4087
Pillowtop sleep-well mattress	S	S	S	S	S	S
Bedsprad with pillow shams and toss pillows	S	S	S	S	S	S
Diamond-beveled mirror with designer headboard	S	S	N/A	N/A	N/A	N/A
Carpet-lined wardrobe with mirrored doors	S	S	S	S	S	S
Wardrobe lights	S	S	S	S	S	S
TV cabinet and jack	S	S	S	S	S	S
13" color TV	S	S	N/A	N/A	N/A	N/A
19" color TV	N/A	N/A	S	S	S	S
Boxed window treatments	S	S	S	S	S	S
Micro mini blinds	S	S	S	S	S	S
Pin-up lights	S	S	S	S	S	S
AM/FM stereo/cassette player	S	S	S	S	S	S
Lined overhead cabinets throughout	S	S	S	S	S	S

Escaper Kitchen	3970	3975	3977	3979	4076	4087
Refrigerator: Large flush-mounted double-door	S	S	S	S	S	S
Refrigerator: Side-by-side with ice maker IPO standard refrigerator and pantry	O	O	O	O	O	O
Refrigerator: solid wood front (oak or maple)	S	S	S	S	S	S
3-burner range and oven	S	S	S	S	S	S
Cooktop IPO range and oven	O	O	O	O	O	O
Folding range cover with solid-surface accent	S	S	S	S	S	S
Microwave/convection oven	S	S	S	S	S	S
Wall-mounted monitor panel with LPG readout	S	S	S	S	S	S
Single-lever faucet with sprayer	S	S	S	S	S	S
Pantry	S	S	S	S	S	S
Corian® countertops	S	S	S	S	S	S
Solid-surface double-bowl sink	S	S	S	S	S	S
Two Corian® sink covers	S	S	S	S	S	S
Raised panel hardwood cabinet doors throughout (oak or maple)	S	S	S	S	S	S
Brass-style cabinet hardware	S	S	S	S	S	S
Ceramic tile flooring kitchen and bath	S	S	S	S	S	S
Freestanding dinette with 2 chairs	S	S	S	S	S	S
2 folding chairs (available with freestanding dinette only)	O	O	O	O	O	O
Booth dinette	O	O	O	O	O	O
Micro mini blind	S	S	S	S	S	S
Fire extinguisher	S	S	S	S	S	S
Lined overhead cabinets throughout	S	S	S	S	S	S

Escaper Bathroom	3970	3975	3977	3979	4076	4087
Full-height fiberglass tub w/shower	N/A	N/A	N/A	N/A	N/A	S
Shower with door	S	S	S	S	S	N/A
Skylight in shower	S	S	S	S	S	S
Obscure glass window in private stool area	S	S	S	S	S	S
Power vent	S	S	S	S	S	S
Foot-flush porcelain toilet w/sprayer	S	S	S	S	S	S
Medicine cabinet with mirrored hardwood framed door	S	S	S	S	S	S
Wallpaper border in private stool area	S	S	S	S	S	S
Corian® countertop with backsplash	S	S	S	S	S	S
Solid-surface sink	S	S	S	S	S	S
Lined overhead cabinets throughout	S	S	S	S	S	S

Escaper Exterior	3970	3975	3977	3979	4076	4087
Paint and graphics	S	S	S	S	S	S
Fog lights	S	S	S	S	S	S
Wide-body design	S	S	S	S	S	S
Radius-cornered domed roof	S	S	S	S	S	S
Rubber roof	S	S	S	S	S	S
Roof vents	S	S	S	S	S	S
Rear ladder	O	O	O	O	O	O
Aerodynamic front and rear fiberglass cap	S	S	S	S	S	S
Contoured front and rear integrated bumpers	S	S	S	S	S	S
Awning rail	S	S	S	S	S	S
Side-mounted patio awning*	O	O	O	O	O	O
Side-mounted front door awning*	O	O	O	O	O	O
Side-mounted awning over slide out*	S	S	S	S	S	S
Carefree® electric patio awning*	O	O	O	O	O	O
Carefree® front door awning*	O	O	O	O	O	O
Remote control for Carefree® electric patio awning*	O	O	O	O	O	O
Entry-assist lighted grab handle	S	S	S	S	S	S
Molded and gelcoated fiberglass sidewalls	S	S	S	S	S	S
Locking exterior storage compartments	S	S	S	S	S	S
Custom-designed front entry door with screen	S	S	S	S	S	S
Remote keyless entry	S	S	S	S	S	S
Large, white-trimmed windows	S	S	S	S	S	S
Dual pane windows	S	S	S	S	S	S
2 porch lights (one each side)	S	S	S	S	S	S
Lighted storage compartments	S	S	S	S	S	S
Pass-through basement storage	S	S	S	S	S	S
Easy-slide storage tray in basement	O	O	O	O	O	O
Exterior entertainment center	O	O	O	O	O	O
Gas pistons on exterior storage doors	S	S	S	S	S	S
Sewer hose storage	S	S	S	S	S	S
RVQ grill	O	O	O	O	O	O

*Awnings not available on wide body models in some locations. Check local regulations for applicable laws.

S = Standard O = Optional N/A = Not Available IPO = In Place Of

Escaper Living Room	3970	3975	3977	3979	4076	4087
Extra-large cloth recliner with footrest	S	S	S	S	S	S
Extra-large ultra-leather recliner with footrest	O	O	O	O	O	O
Lounge table (N/A with J-lounger)	S	S	S	S	S	S
J-lounger: ultra-leather (replaces recliner and lounge table, N/A hide-a-bed)	O	O	O	O	O	O
Sofa bed, cloth	N/A	N/A	N/A	N/A	N/A	S
Sofa bed, ultra-leather	N/A	N/A	N/A	N/A	N/A	O
Hide-a-bed, cloth (N/A with J-lounger)	S	S	S	S	S	N/A
Hide-a-bed, ultra-leather (N/A with J-lounger)	O	O	O	O	O	N/A
Love seat, ultra-leather (replaces recliner and lounge table)	O	O	O	O	O	O
Magic bed, cloth (replaces hide-a-bed in 3970, 3975, 3977, 3979 with J-lounger option)	O	O	O	O	O	N/A
Magic bed, ultra-leather (replaces hide-a-bed in 3970, 3975, 3977, 3979 with J-lounger option)	O	O	O	O	O	N/A
Day/night shades	S	S	S	S	S	S
100% continuous-filament nylon carpeting with carved insert	S	S	S	S	S	S
25" color TV with full-function remote in cockpit overhead with antenna, booster and jack	S	S	S	S	S	S
Video package (VCR and control center)	S	S	S	S	S	S
Theater TV/VCR sound	S	S	S	S	S	S
Home theater with DVD/CD player and 5-channel Dolby® Pro-Logic receiver amplifier	O	O	O	O	O	O
Fabric ceiling	S	S	S	S	S	S
Fluorescent lighting throughout	S	S	S	S	S	S
Living room pin-up lights	S	S	S	S	S	S
Aisle lights	S	S	S	S	S	S
Fantastic® vent	S	S	S	S	S	S
Lined overhead cabinets throughout	S	S	S	S	S	S

S = Standard O = Optional N/A = Not Available IPO = In Place Of

Weights and Measures	3970	3975	3977	3979	4076	4087
Chassis	F/S*	F/S*	F/S*	S*	S*	S*
Wheelbase (in.)	242	242	242	242	252	252
GVWR (lbs.)	29,910/31,000	29,910/31,000	29,910/31,000	31,000	31,000	31,000
GCWR (lbs.)	39,910/41,000	39,910/41,000	39,910/41,000	41,000	41,000	41,000
Fresh water system (appx. gal.)	109	109	109	109	109	109
Greywater (appx. gal.)	50	50	50	50	50	50
Blackwater (appx. gal.)	50	50	50	50	50	50
LP (lbs.)	126	126	126	126	126	126
Sleeping capacity	4	4	4	4	4	4
Std. Wt. (appx. lbs.)	21,897/22,946	22,835/23,704	22,414/23,463	23,761	24,100	24,520
Overall height with A/C	12'6"	12'6"	12'6"	12'6"	12'6"	12'6"
Overall length	39'2"	39'2"	39'2"	39'2"	40'0"	40'0"
Overall width	101"	101"	101"	101"	101"	101"

*Freightliner /Spartan

S = Standard O = Optional N/A = Not Available IPO = In Place Of



Due to constant product improvements, the specifications, component parts and standard/optional equipment are subject to change without notice or obligation. Product photography or diagrams may show equipment that is optional. Damon Corporation reserves the right to make changes in prices and models and to discontinue models without notice or obligation. Components, parts or chassis may have been manufactured at times other than the model year indicated. All capacities are approximate and dimensions are nominal. All dry weights are based on standard model features and do not include optional features or equipment. Various RV components and features may differ to conform to local codes.

DC 6/01 © 2001 Damon Corporation Printed in U.S.A.



Official Motorhome of