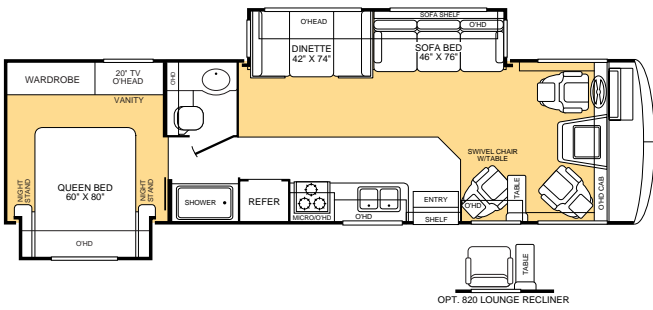
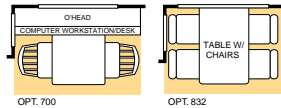
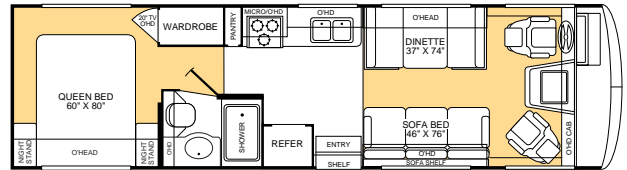


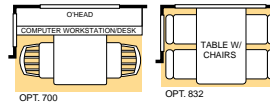
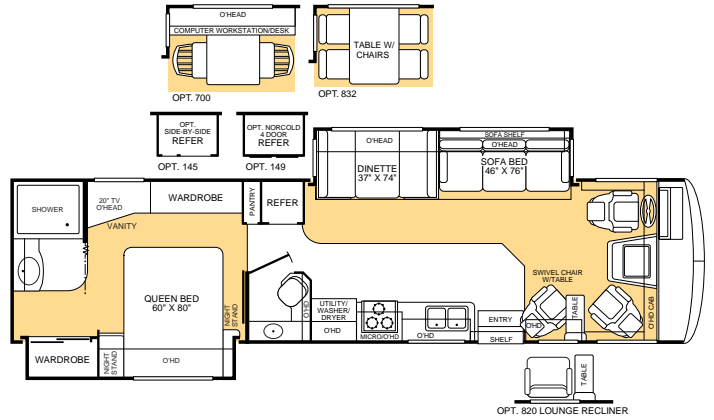


# Bounder®

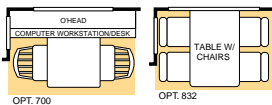
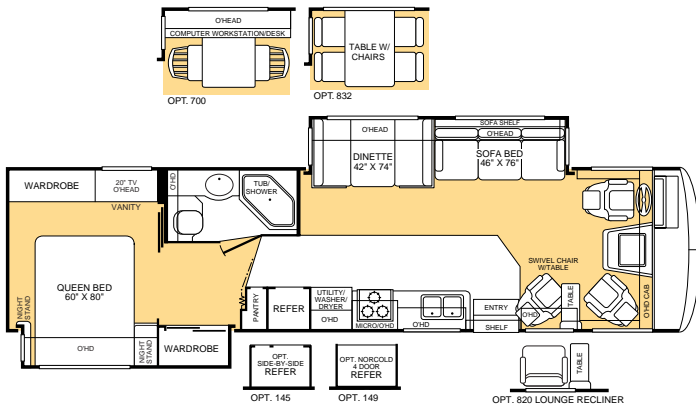
Model  
**30P**



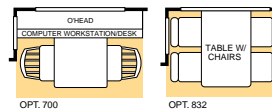
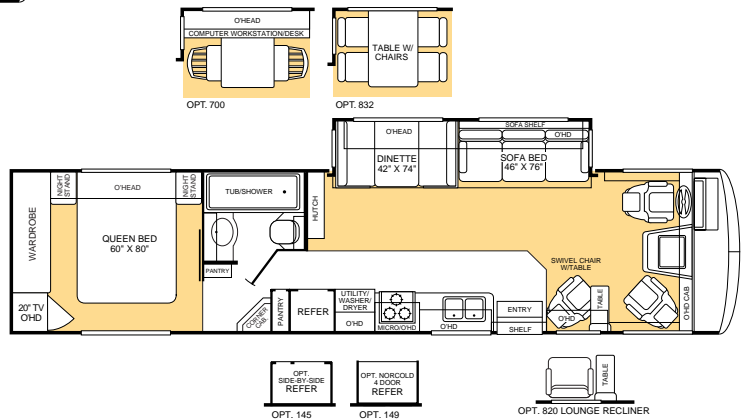
Model  
**32W**



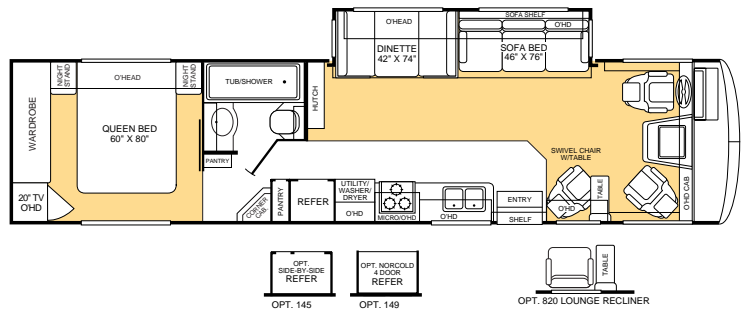
Model  
**35E**



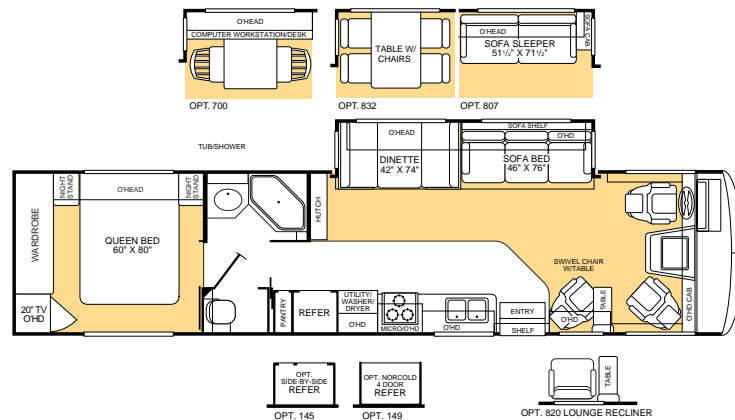
Model  
**35R**



Model  
**36D**



# Floor Plans Continued and Specifications



Model  
**36S**

Ford® Chassis	30P	32W	35E	35R	36D	36S
Engine LD	6.8L	6.8L	6.8L	6.8L	6.8L	6.8L
Wheelbase	190"	208"	228"	228"	228"	228"
GVWR (lbs) (1)	18,000	20,500	22,000	22,000	22,000	22,000
Front GAWR (lbs) (2)	7,000	7,000	7,500	7,500	7,500	7,500
Rear GAWR (lbs) (2)	11,000	13,500	14,500	14,500	14,500	14,500
Base Weight (lbs) (3)	14,100	16,100	16,750	16,750	16,650	16,650
GCWR (lbs) (4)	23,000	25,500	26,000	26,000	26,000	26,000
Hitch Rating Weight (lbs)*	5,000	5,000	5,000	5,000	5,000	5,000
Tongue Weight (lbs)*	500	500	500	500	500	500
Fuel Capacity (gal)	75	75	75	75	75	75
Workhorse® Chassis	30P	32W	35E	35R	36D	36S
Engine LD	N/A	8.1L	8.1L	8.1L	8.1L	8.1L
Wheelbase	N/A	208"	228"	228"	228"	228"
GVWR (lbs) (1)	N/A	20,700	22,000	22,000	22,000	22,000
Front GAWR (lbs) (2)	N/A	7,500	8,000	8,000	8,000	8,000
Rear GAWR (lbs) (2)	N/A	13,500	14,500	14,500	14,500	14,500
Base Weight (lbs) (3)	N/A	16,450	17,400	17,400	17,300	17,300
GCWR (lbs) (4)	N/A	25,700	26,000	26,000	26,000	26,000
Hitch Rating Weight (lbs)*	N/A	5,000	5,000	5,000	5,000	5,000
Tongue Weight (lbs)*	N/A	500	500	500	500	500
Fuel Capacity (gal)	N/A	75	75	75	75	75
Dimensions and Capacities	30P	32W	35E	35R	36D	36S
Overall Length (5)	30' 10"	32' 10"	35' 10"	35' 10"	36' 10"	36' 10"
Overall Height (with A/C) (8)	11' 8"	11' 8"	11' 8"	11' 8"	11' 8"	11' 8"
Overall Width (maximum) (6)	102"	102"	102"	102"	102"	102"
Interior Height (maximum)	79"	79"	79"	79"	79"	79"
Interior Width (maximum)	96"	96"	96"	96"	96"	96"
Fresh Water Holding Tank (gal)	100	100	100	100	100	100
Grey Water Holding Tank (gal)	58	58	58	58	58	58
Black Water Holding Tank (gal)	42	42	42	42	42	47
Appliance LPG Tank (gal) (WC) (7)	25	25	25	25	25	25
Water Heater Tank (gal)	10	10	10	10	10	10
Liquid Weight Reference	Water (gal) = (8.3 lbs/3.8 kgs)		Fuel (gal) = (6.1 lbs/2.8 kgs)		LPG (gal) = (4.5 lbs/2.0 kgs)	
Metric Conversion	Multiply pounds x 0.453 to obtain kilograms			Multiply gallons x 3.785 to obtain liters		

- GVWR (Gross Vehicle Weight Rating): Means the maximum permissible loaded weight of the motor home. The GVWR is equal to or greater than the sum of the unloaded vehicle weight plus the net carrying capacity.
- GAWR (Gross Axle Weight Rating): Means the maximum permissible loaded weight a specific axle is designed to carry.
- Base Weight: Means the estimated weight of the motor home without fuel, options, water, cargo or passengers.
- GCWR (Gross Combined Weight Rating): Means the value specified by the motor home manufacturer as the maximum allowable loaded weight of this motor home with its towed vehicle. Towing and braking capacities may differ. Refer to Fleetwood and chassis manufacturer manuals for complete information.

- Length taken from front bumper to rear bumper (excludes accessories). Add 6" for roof access ladder.
- Excludes safety equipment and awnings.
- Tank Manufacturer's listed water capacity (WC). Actual LPG capacity is 80% of water listing as required by the safety code.
- Add 4" for Workhorse® chassis.

\* The chassis manufacturer recommends the installation of a supplemental brake control system to activate the brakes on the vehicle or trailer you are towing.

# Standard and Optional Features



## Appliances

- Front 27" Panasonic® Stereo TV in Overhead
- Rear 20" Panasonic® TV
- Hi-Fi VCR
- Smoke Detector/Alarm
- LPG Detector/Alarm
- CO Detector/Alarm
- 34,000 BTU Furnace
- 10-Gallon, Quick-Recovery Water Heater with D.S.I. (Gas/Electric)
- 3-Burner, High-Output Range w/Oven
- Light/Power Range Hood
- Monitor Panel in Dash
- Folding Range Cover
- Dual Roof A/C High Efficiency w/Solar Panel on Front A/C
- Water Heater Bypass System
- Marine Toilet with Water Saver
- Toilet Tank San-T-Flush™ System
- 1.0-cu. ft. Microwave
- 8-cu. ft. Dometic® Double Door Refrigerator
- Single-Lever Galley Faucet with Sprayer
- Water Filter with Faucet
- Demand Water Pump with Filter
- TV Antenna
- Fan-Tastic® Power Roof Vent – Galley
- Fire Extinguisher (ABC Rated)
- Telephone Jack in Dash and Bedroom
- Rear Speakers in Bedroom
- DSS Manual Lift Satellite Dish

## Body Structure

- Vacu-bond® Upper/Lower Floors
- Vacu-bond® Walls with Smooth High-Gloss Exterior Fiberglass
- Radius Roof with Ducted A/C
- Royal Tuff-Ply™ Roof
- Aluminum Interlocking Floor/Wall/Ceiling Framing

## Electrical

- Dual Patio Receptacles
- 120V/12V AC/DC Converter
- Central Electrical Panel
- 120V/12V Wire Raceways
- 3-Way Water Pump Switch
- 5.5kW Onan® Generator
- 30-amp Service
- Wall Switches
- Electronic Climate Control Systems
- Dual 6V/Deep-Cycle 218-amp House Batteries

## Exterior

- Fiberglass Front/Rear Cap
- Rotocast Front Quarter Panels
- Rotocast Rear Wheel Well Trim
- Entry Door with Deadbolt Latch
- Dual Pane Windows
- Awning
- Utility Compartment with Exterior Shower

## Exterior (cont.)

- 4-Point Manual Hydraulic Levelers (Optional on P Model)
- Roof Ladder
- Exterior Entry Assist Handle
- Remote Heated Rear View Mirrors
- Spare Tire
- Park Cable Receptacle
- Awning Rail/Drip Molding (Both Sides)
- Power Entry Step
- Dual Battery Charge Control
- Porch Light
- 3 Colorway Graphics to Match Decor

## Exterior Automotive

- Large, Curved Aerodynamic Bonded in Windshield
- Undercoating
- Wheel Simulators
- Valve Extenders
- Underhood Utility Light
- Steel Surface on Bulkhead
- Trailer Hitch with 7-Point Electrical Hook-Up\*
- Large Headlamps
- Rear Vision Camera
- Single Motor Windshield Wipers with Wet Arm
- Mud Flaps

## Exterior Storage

- Insulated Aluminum Luggage Doors
- Single-Paddle/Metal Latches
- Continuous One-Piece Bulb Seal
- Hidden, Stainless Steel Latch Rods
- Hidden Lift Strut Supports
- Lighted Compartments
- Rotomolded Compartments

## Interior

- 3 Interior Decors
- Skylight in Tub/Shower
- Plush Wall-to-Wall Carpet w/Carpet Pad
- Wood Drawers
- Roller Guide Drawer Slides with Transit Ship Locks
- Radius Corner Cabinetry
- Coordinated Cabinet Hardware
- Pleated Shades
- Bedsprad with Decor Pillows
- Restonic® Innerspring Mattress
- Solid Surface Countertop - Galley
- Vinyl Flooring in Galley & Bath
- Flex-o-lator® Dinette Seating
- Hardwood Bath Door/Trims
- Trash Basket in Galley
- Molded Tub/Shower Enclosure
- Coordinated Bath Accessories
- Residential Seat Styling
- Entry Rail
- Raised-Panel Cabinet Doors
- Flat Panel Base Cabinet Doors
- Adjustable Cabinet Shelves (Selected Cabinets)

## Interior (cont.)

- Sink Cover Cutting Board
- Solid Divider Doors
- Large, Double Stainless Steel Sink in Galley

## Interior Automotive

- Intermittent Wiper Control
- Double Swivel Sun Visors w/Map Pockets
- Cruise Control
- AM/FM/Cassette Radio
- Auxiliary Start Circuit
- Battery Shut-Off Switch
- Auto A/C Heater Combo
- Radio Switch–Main/Auxiliary Power
- Soft-Surface Automotive Dash
- Driver/Passenger Captain's Chairs with Reclining Back/Slide Controls
- Low Profile Engine Cover
- Tilt Steering Wheel
- 3-Point Seat Belts on Driver/Passenger Seats

## Interior Lighting

- Wardrobe Lighting
- Fluorescent Lighting
- Decor Lighting
- Incandescent Lighting
- Bedroom Lighting

## Platform Construction

- Basement Floor Configuration
- Heated Water & Holding Tank Compartments
- Polyethylene Luggage Compartment Boxes
- EZ-Store™ Compartment on Living Area Slide-Outs
- Power Platform
- Coach Vibration Isolators

## Optional Features

- 3-Burner Cook Top
- Washer/Dryer (Select Models)
- Torque Windows in Bedroom
- 12-cu. ft. Side-by-Side Dometic® Refrigerator w/Ice Maker
- Norcold® 4-Door Refrigerator w/Ice Maker
- CSA Package
- Electric Awning
- Convection Microwave
- Computer Work Station
- Stereo AM/FM with 6-Disc CD Player
- Stereo with AM/FM CD/Cassette
- Dash Fans
- Free-Standing Dinette with Chairs
- Lounge Recliner
- CB Radio Ready
- 300 Watt Inverter (Bedroom TV and VCR)
- Ultraleather™ Driver/Passenger Seats

\* The chassis manufacturer recommends the installation of a supplemental brake control system to activate the brakes on the vehicle or trailer you are towing.

**IMPORTANT — PLEASE READ:** Product information, photography and illustrations included in this publication were as accurate as possible at the time of printing. For further product information and changes, please visit our website at [www.fleetwoodrv.com](http://www.fleetwoodrv.com) or contact your local Fleetwood dealer. Prices, materials, design and specifications are subject to change without notice. All weights, fuel, liquid capacities and dimensions are approximate. Fleetwood has designed its recreational vehicles to provide a variety of uses for its customers. Each vehicle features optimal seating, sleeping, storage and fluid capacities. The user is responsible for selecting the proper combination of loads (i.e. occupants, equipment, fluids, cargo, etc.) to ensure that the vehicle's capacities are not exceeded.

# Why would you buy anything else?



For every road you travel, Fleetwood has the RV to fit your high standards and lifestyle. We build the recreational vehicles America wants, accounting for nearly one out of every three RVs on the road today. How do we do it? We call it the **Fleetwood Equation**.

## Size + Service + Quality = Value!

### Size The world's #1 RV manufacturer

Over the past half-century Fleetwood has grown to become the largest manufacturer of recreational vehicles in the world.

Fleetwood remains, year after year, the largest, most influential, innovative and recognized leader in the RV industry.

### Service Listening to our customers

With over 1,100 service dealers in the US and Canada, Fleetwood has the largest network in the RV industry. No other RV company

comes close to equaling this vital customer support system. Fleetwood RV service dealers have instant, real-time electronic access to your service records as well as parts inventory and warranty repair authorization inquiries. We also provide a customer call center for service and product information so no matter where you travel in North America, professional support and fast answers are always nearby. Call toll free: 1-800-322-8216.



### Quality Using only the best materials

At Fleetwood, quality begins at the design stage so every coach is built right, right from the start. Subsequent to design approval, full-functioning prototypes are built, then punished on a test track and subjected to accelerated life cycle tests where a few weeks can equal years of normal use. At the same time, components and systems are test-cycled thousands of times assuring years of problem-free use. Once approved for production, each unit is built by skilled technicians using quality materials and components, many of which are sourced through, or manufactured by, our subsidiary companies such as Gold Shield Fiberglass and Continental Lumber Products.



## FLEETWOOD RV

The World's #1 RV Manufacturer

Fleetwood Enterprises, Inc. • RV Marketing • P.O. Box 7638 • Riverside, CA 92513-7638

Your local Fleetwood RV dealer is:



Join Now!  
(877) 577-2560



Fleetwood engineers specify the very best products and appliances from companies such as Coleman, Dometic, Flexsteel, Ford, Freightliner, Magic Chef, Panasonic, and Workhorse. These companies are experts in their respective fields and play a significant role as partners, not just suppliers.

All this assures that every Fleetwood RV has the fit, finish and details required by our high standards—as well as yours.

### Value Priced right with style

At Fleetwood RV, we look at value as the sum of everything we offer.

- Value is our design, engineering expertise, and innovative manufacturing methods.
- Value is structures and components that are the best in the industry, that meet or exceed government and industry safety standards.
- Value is Ownercare — a one-year/three-year warranty with coverage from a company that will be around in the future to service your needs. Ownercare is one of the RV industry's most comprehensive programs and includes systems and applications, construction, no deductible and no service charge. And it is fully transferable for the first 12 months. See your nearest Fleetwood dealer for a full explanation of benefits and restrictions.
- Value is customer satisfaction. When asked, more experienced RV owners would recommend Fleetwood to a friend than any other brand. Fleetwood RVs consistently hold their value better than most RVs at trade-in time.



Value is peace of mind.

SSQV—Size, Service, Quality, and Value. Together they equate to the very best RV you can buy, and the reason you should purchase a Fleetwood over any other brand.

Require these features when you purchase your next RV... Fleetwood does!

See you on the road!

[www.fleetwoodrv.com](http://www.fleetwoodrv.com)

Visit our website to find a dealer near you or learn more about other Fleetwood products. Or call 1-800-444-4905.

FOR CUSTOMER ASSISTANCE, call toll free at 1-800-322-8216, visit our website, or you may write to Fleetwood Enterprises, Inc., P.O. Box 7638, Riverside, CA 92513-7638.

**IMPORTANT—PLEASE READ:** Product information, photography and illustrations included in this publication were as accurate as possible at the time of printing. For further product information and changes, please visit our website at [www.fleetwoodrv.com](http://www.fleetwoodrv.com) or contact your local Fleetwood dealer. Prices, materials, design and specifications are subject to change without notice. All weights, fuel, liquid capacities and dimensions are approximate. Fleetwood has designed its recreational vehicles to provide a variety of uses for its customers. Each vehicle features optimal seating, sleeping, storage and fluid capacities. The user is responsible for selecting the proper combination of loads (i.e. occupants, equipment, fluids, cargo, etc.) to ensure that the vehicle's capacities are not exceeded.