



INTRUDER 2003

DAMON DARES YOU.



If you can find another



Go ahead. Check out our competitors. Intruder™ is the better value. We're sure of it. Other motorhomes in its class cost thousands of dollars more. But Intruder matches, and surpasses, their luxury. And beauty. We dare you to find a single competitor that has all these extraordinary Intruder features:

## motorhome with features like this at Intruder's price ...

Intruder's full **gelcoated fiberglass caps and sidewalls** give the coach impressive curb appeal. We even go one step further and offer an optional **seamless fiberglass roof**, which virtually eliminates maintenance costs.

Our gorgeous new **full-body paint** packages make Intruder stand out, even when comparing it to motorhomes that cost \$50,000 more.

The **huge windshield and cockpit windows** not only provide a safe view of the road, but also give Intruder a stylish, contemporary look.

**Heated, front-mounted rear-view mirrors** eliminate blind spots, allowing you to see behind the coach without looking out a side window.

Intruder's **flush-floor slideouts** operate on a smooth rack-and-pinion mechanism. The flush floor means you no longer have to worry about tripping your way through the living area. Plus, vacuuming is much simpler.

The kitchen features **solid-surface countertops, sink covers and range covers**, which help to eliminate bacteria and are incredibly easy to keep clean. What's more, the acrylic sink will remain scratch-free for as long as you have your motorhome.

You may be in the middle of nowhere, but that doesn't mean you have to be uncomfortable. The huge **27-inch television** in Intruder's cockpit overhead ensures that you will feel right at home, wherever you are.

Our **cabinet door construction** is second to none. Mortise and tendon joints, an oven-baked performance catalyst finish and solid wood are just some of the features that make our cabinets the most reliable in the industry.

Molded ABS dash



Pullout pantry drawers



27-inch television





Compare the features, th



The standard Pioneer® **AM/FM/cassette player** in the cockpit dash is sure to make those long drives more enjoyable. Option the Pioneer **XM-satellite radio tuner**, and you not only expand your choice of stations, but you also get coast-to-coast programming — with no need to switch stations as you travel.

You also have the option of a Surroundsound® **home theater system**, complete with a DVD/CD player, satellite speakers, a Pioneer receiver and a subwoofer.

It's easy to keep your cooking supplies organized with Intruder's **pantry**. It has adjustable shelves and roll-out drawers, so it's simple to reach items, even when they're stored in the very back.

If you're one of the 90% of motorhomers who tow a vehicle, you'll be happy to know that Intruder comes standard with a **5,000-lb. hitch**. Better yet, it has a 500-lb. hitch weight, so you can tow a car, a pickup, even an SUV. Intruder is built to handle it.



en compare the price. Damon wins every time. Period.

To make sure you don't have to leave anything behind, Intruder is equipped with multiple **pass-through storage compartments**.

For a Damon Dare checklist for easy comparison shopping, visit our web site at [www.DamonRV.com](http://www.DamonRV.com). We're confident that these features put Intruder in a class of its own. So go ahead, shop around. Once you see everything that goes into an Intruder, we're confident you wouldn't dare settle for anything less.

Pioneer AM/FM/cassette player



Home theater system



Ample interior storage



## The Sidewalls

Sidewalls are five layers thick:

- Exterior fiberglass
- Wood backer
- Aluminum frame
- Bead-foam insulation
- Interior wallboard

The walls are also vacuum-bond laminated for added strength and rigidity. The lamination process eliminates "soft walls," because it integrates all layers, turning them into one solid structure.

All wall openings — for doors, windows and other components — are framed in aluminum tubing with welded joints. This further strengthens the coach body.

## The Utilities

It's no problem to travel in all four seasons because of Intruder's heated holding tanks and fully contained plumbing systems. We've mounted the tanks horizontally, making service and maintenance easy — you don't have to cut any steel to access the tanks.

## The Floor

A water-resistant, structurewood floor supports the living area in the motorhome. Framed in 1.5-inch welded steel tubing, it is insulated with solid bead-foam insulation and protected with a galvanized underbelly, which will not rust or corrode.

## The Basement and Storage

The Intruder basement employs a strong, welded steel truss system. The trusses are horizontal to better distribute house-body weight. They also provide a central location for attaching the house and storage compartments. And they allow for Intruder's huge pass-through storage area.



## The Roof

Intruder's roof is also vacuum-bond laminated for superior strength and rigidity. It features an aluminum rafter support system with bowed rafters to maintain the roof's crowned shape. A crowned roof permits better water runoff, which helps prevent leaks. It also increases the insulation factor, especially around air-conditioner channels. The optional one-piece fiberglass roof is seamless, eliminating the possibility of leaks and maintenance expenses.



# Dare to go anywhere: Intruder's built to take it.

What makes the difference? Advanced engineering. Computer-aided design. Innovative manufacturing techniques. And paying attention to feedback from RVers just like you.

At Damon, we also maintain consistent standards. Many other manufacturers cut corners. Not us. Every motorhome we make, whatever the price, gets built the same way — the right way — with the same high-quality materials, components and construction techniques.

Pass-through storage



Driver's door with power window



5,000-lb. towing capacity



## The Chassis

Quality construction starts with the chassis. And Intruder uses only the finest: either a Ford® or Workhorse® chassis, depending on the floor plan.

Bloomfield Sand



Cobblestone Suede



Silverhills Beige



Woodland Willow



Platinum



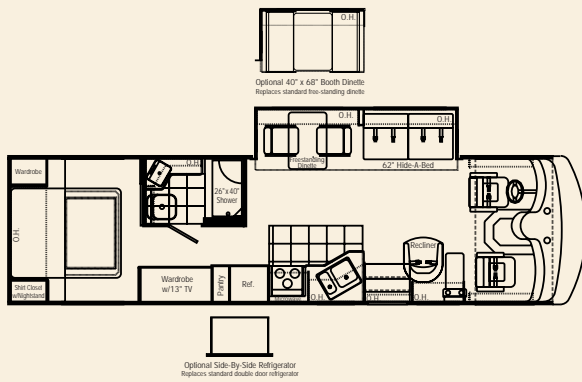
Bronze



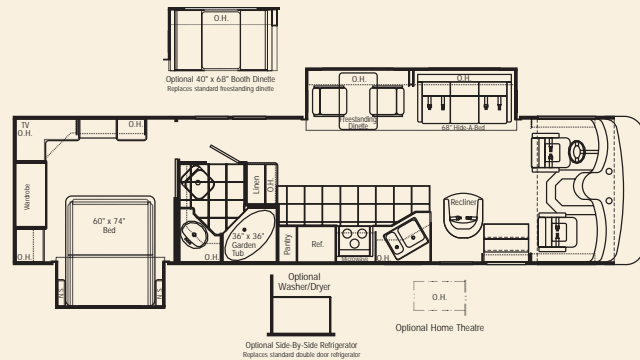
Sapphire



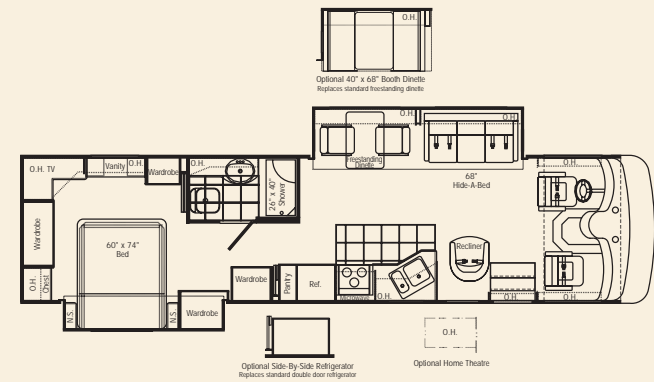
332 Living-area slideout • Fully contained bath • Pantry



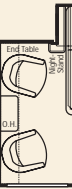
350 Living-area slideout • 30" deep bedroom slideout • Vanity • Huge windows in hall



369 Living-area slideout • Bedroom slideout • Four wardrobes



373





Maple



Oak



# Daring choices ... to fit your life.

## Décor

Damon's interior designers and engineers have created a choice of exciting environments that not only help you feel right at home, but also lend a sense of personality to your Intruder.

## Floor Plans

Whichever Intruder floor plan you choose, you can be sure it's thoughtfully laid out to provide the roomiest, most comfortable, most convenient mobile living experience you've ever had.

## Paint

Gorgeous automotive full-body exterior paint in a choice of three colors gives Intruder a distinctly upscale look. It's a new option for 2003 that's already turning heads and attracting a lot of buzz.

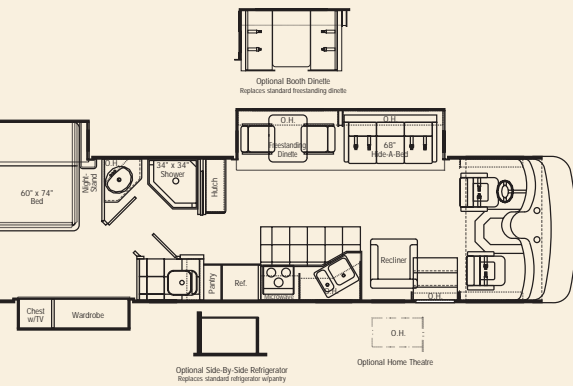
Light Taupe



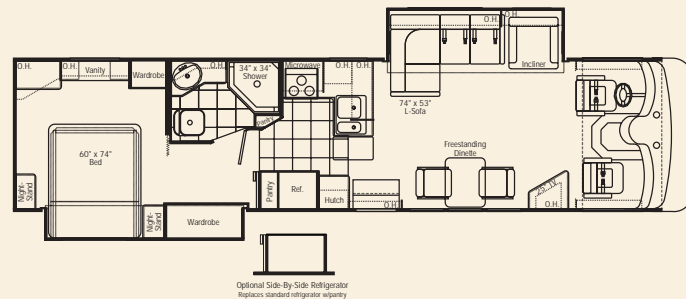
Dark Taupe



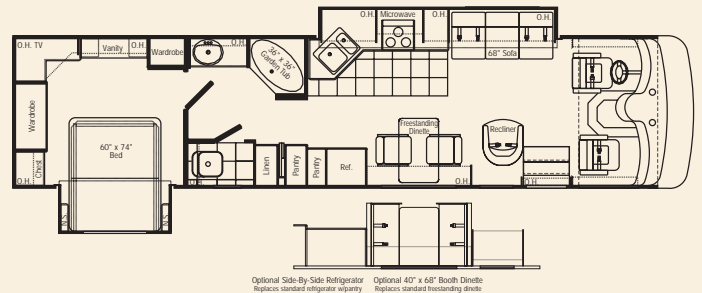
Living-area slideout • Triple slide • Panoramic rear bedroom windows



375 Double slideout • Triple living-area windows • TV useable while driving



379 Living-area slideout • 30" deep bed slide • Vanity • Walk-through bath



Bathroom	332	350	369	373	375	379
Vinyl tile	0	0	0	0	0	0
Full-height fiberglass tub or shower with door	S	S	S	S	S	S
Skylight in tub/shower	S	S	S	S	S	S
Obscure glass window in private stool area	S	N/A	N/A	S	N/A	S
Power vent	S	S	S	S	S	S
Foot-flush porcelain toilet with sprayer	S	S	S	S	S	S
Medicine cabinet with solid-wood door and mirror	S	S	S	S	S	S
Wallpaper border	S	S	S	S	S	S
Bedroom	332	350	369	373	375	379
Pillowtop mattress	S	S	S	S	S	S
Bedspread	S	S	S	S	S	S
Rear wardrobe with side bed	S	S	S	S	S	S
Lined wardrobe with mirrored doors	S	S	S	S	S	S
Wardrobe lights	S	S	S	S	S	S
TV area with jack	S	S	S	S	S	S
13" color TV	S	N/A	N/A	N/A	N/A	N/A
19" color TV	N/A	S	S	S	S	S
Lambrequin window treatments	S	S	S	S	S	S
Day/night shades	S	S	S	S	S	S
Pin-up lights	S	S	S	S	S	S
AM/FM/cassette stereo	0	0	0	0	0	0
Chassis	332	350	369	373	375	379
Leveling jacks	S	S	S	S	S	S
Spare tire, wheel and bracket	S	S	S	S	S	S
Front and rear mud flaps	S	S	S	S	S	S
Radial tires	S	S	S	S	S	S
Stainless-steel wheel liners	S	S	S	S	S	S
Trailer hitch (5,000 lbs.)	S	S	S	S	S	S
Emergency start circuit	S	S	S	S	S	S
Under-hood light	S	S	S	S	S	S
Automatic transmission with overdrive	S	S	S	S	S	S
Layer of neoprene vibration dampener	S	S	S	S	S	S
Cockpit	332	350	369	373	375	379
Molded ABS dash	S	S	S	S	S	S
Burl instrument panel	S	S	S	S	S	S
Full instrumentation	S	S	S	S	S	S
Electronically controlled dash air conditioning	S	S	S	S	S	S
Pioneer® AM/FM/cassette upgraded stereo	S	S	S	S	S	S
AM/FM/cassette with multi-disc CD changer	0	0	0	0	0	0
XM-satellite radio tuner	0	0	0	0	0	0
4-speaker sound	S	S	S	S	S	S
Cruise control	S	S	S	S	S	S
Power steering	S	S	S	S	S	S
Tilt steering wheel	S	S	S	S	S	S
Map lights	S	S	S	S	S	S
Dash fans	S	S	S	S	S	S
Electric trumpet horns	0	0	0	0	0	0
Driver's door with power window	0	0	0	0	0	0
Tinted wraparound windshield	S	S	S	S	S	S
Windshield privacy drape	S	S	S	S	S	S
Front-mounted power mirrors with heat	S	S	S	S	S	S
Floor mats	S	S	S	S	S	S

Cockpit (con't.)	332	350	369	373	375	379
Reclining swivel captain's chairs	S	S	S	S	S	S
Ultra-leather captain's chairs (set of 2)	0	0	0	0	0	0
Power 6-way seat (driver only)	0	0	0	0	0	0
Power 6-way seat (passenger only)	0	0	0	0	0	0
3-point, wall-mounted seatbelts	S	S	S	S	S	S
Rosen® full-size sun visors	S	S	S	S	S	S
Carefree® electric sun visors with two manual side shades	0	0	0	0	0	0
Upgraded back-up monitor system with audio and flip-up LCD screen	0	0	0	0	0	0
Drink holders	S	S	S	S	S	S
Entry	332	350	369	373	375	379
Electric entrance step	S	S	S	S	S	S
Integrated entrance step	S	S	S	S	S	S
Entry-assist handle	S	S	S	S	S	S
Deadbolt door lock	S	S	S	S	S	S
Storage in stairwell	S	S	S	S	S	S
Battery access in stairwell	S	S	S	S	S	S
Exterior	332	350	369	373	375	379
Paint package with deluxe graphics	S	S	S	S	S	S
Full-body paint package with seamless fiberglass roof and color-coordinated Carefree® awnings with remote control	0	0	0	0	0	0
Fog lights	S	S	S	S	S	S
Wide-body design	S	S	S	S	S	S
Radius-cornered domed roof	S	S	S	S	S	S
Seamless fiberglass roof	0	0	0	0	0	0
Roof vents	S	S	S	S	S	S
Rear ladder	S	S	S	S	S	S
Aerodynamic front and rear fiberglass caps	S	S	S	S	S	S
Contoured front integrated bumper	S	S	S	S	S	S
Automotive-style rear bumper	S	S	S	S	S	S
Awning rail	S	S	S	S	S	S
Side-mounted patio awning (Awnings not available on wide-body models in some locations. Check local regulations for applicable laws.)	S	S	S	S	S	S
Side-mounted awning over slideout	S	S	S	S	S	S
Entry-assist lighted grab handle	S	S	S	S	S	S
Upgraded gelcoated sidewall	S	S	S	S	S	S
Locking exterior storage doors	S	S	S	S	S	S
Dual-pane windows	0	0	0	0	0	0
Two porch lights (one on each side)	S	S	S	S	S	S
Easy-to-clean, lighted, rotocast storage compartments	S	S	S	S	S	S
Full basement pass-through storage	S	S	S	S	S	S
Gas pistons on exterior storage doors	S	S	S	S	S	S
RVQ grill	0	0	0	0	0	0
Kitchen	332	350	369	373	375	379
Refrigerator: large flush-mounted, double-door	S	S	S	S	S	S
Refrigerator: large flush-mounted, double-door with icemaker	0	0	0	0	0	0

S = Standard    0 = Optional    N/A = Not available    IPO - In place of

Kitchen (con't.)	332	350	369	373	375	379
Refrigerator: side-by-side with icemaker IPO standard refrigerator and pantry	0	0	0	0	0	0
Refrigerator: solid-wood front (oak or maple)	S	S	S	S	S	S
3-burner range and oven	S	S	S	S	S	S
Solid-surface range cover	S	S	S	S	S	S
Microwave oven	S	S	S	S	S	S
Microwave/convection oven	0	0	0	0	0	0
Lighted power range hood	S	S	S	S	S	S
Monitor panel with LPG readout	S	S	S	S	S	S
Double-bowl sink with oversized dish bowl	S	S	S	S	S	S
Solid-surface sink cover(s)	S	S	S	S	S	S
Single-lever faucet with sprayer	S	S	S	S	S	S
Pantry	S	S	S	S	S	S
Solid-surface countertops	S	S	S	S	S	S
Solid-wood cabinet doors throughout (oak or maple)	S	S	S	S	S	S
12" x 12" vinyl tile flooring	S	S	S	S	S	S
Wood-plank flooring (oak or maple)	0	0	0	0	0	0
Booth dinette with padded top, deep storage drawers and solid-surface edged table	0	0	0	0	N/A	0
Freestanding dinette with 2 chairs	S	S	S	S	S	S
2 folding chairs (available with freestanding dinette only)	0	0	0	0	0	0
Mini blinds	S	S	S	S	S	S
Fantastic® power vent	0	0	0	0	0	0
Fantastic® power vent with rain sensor	0	0	0	0	0	0
Wallpaper border	S	S	S	S	S	S
Fire extinguisher	S	S	S	S	S	S
<b>Living Area</b>	<b>332</b>	<b>350</b>	<b>369</b>	<b>373</b>	<b>375</b>	<b>379</b>
Extra-large recliner with footrest (cloth)	S	S	S	S	S	S
Extra-large recliner with footrest (ultra-leather)	0	0	0	0	0	0
Sofa bed	N/A	N/A	N/A	N/A	N/A	S
Hide-a-bed	S	S	S	S	N/A	N/A
L-shape sofa	N/A	N/A	N/A	N/A	S	N/A
Day/night shades	S	S	S	S	S	S
100% nylon carpeting with stain treatment and padding	S	S	S	S	S	S
27" color TV in cockpit overhead with full-function remote, antenna booster and jack	S	S	S	S	N/A	S
27" color TV in entertainment center with full-function remote, antenna booster and jack	N/A	N/A	N/A	N/A	S	N/A
Video package (VCR and control center)	S	S	S	S	S	S
Home theater package (DVD/CD player and 5-channel Dolby® Pro-Logic receiver amplifier)	0	0	0	0	0	0
Decorator clock and mirror	S	S	S	S	S	S
Decorator wall vinyl	S	S	S	S	S	S
Fabric ceiling	S	S	S	S	S	S
Aisle lights	S	S	S	S	S	S
<b>Utilities</b>	<b>332</b>	<b>350</b>	<b>369</b>	<b>373</b>	<b>375</b>	<b>379</b>
Air conditioner: 13,500-BTU ducted central (front)	S	S	S	S	S	S
Air conditioner: 15,000-BTU ducted central upgrade (front) (N/A with solar battery charger)	0	0	0	0	0	0
Air conditioner: 11,000-BTU ducted central (rear)	S	S	S	S	S	S

Utilities (con't.)	332	350	369	373	375	379
5-watt chassis solar battery charger (N/A with 15,000-BTU A/C)	0	0	0	0	0	0
Dual heat pumps with 15,000-BTU A/C and 12,700-BTU heat	0	0	0	0	0	0
Furnace: 35,000-BTU electronic ignition, floor-ducted	S	S	S	S	S	S
Water heater: Motoraid® 6-gallon gas/electric with electronic ignition	0	0	0	0	0	0
Water heater: 6-gallon gas/electric with electronic ignition	S	S	S	S	S	S
Water heater bypass kit	S	S	S	S	S	S
Generator: 5.5 kW Onan® Marquis Gold®	S	S	S	S	S	S
Generator: 7.0 kW Onan® Marquis Gold®	0	0	0	0	0	0
Entertainment inverter with Thermoil® 6-volt auxiliary batteries IPO standard batteries	0	0	0	0	0	0
Converter: solid-state 75-amp, 12-volt	S	S	S	S	S	S
12-volt demand water pump	S	S	S	S	S	S
Dual 6-volt auxiliary batteries	S	S	S	S	S	S
Electronic battery distribution center	S	S	S	S	S	S
Battery disconnect	S	S	S	S	S	S
50-amp, 120-volt service with marine-type detachable power cord	S	S	S	S	S	S
Exterior GFCI receptacle	S	S	S	S	S	S
Enclosed heated potable and holding tanks	S	S	S	S	S	S
Black-water tank flush	S	S	S	S	S	S
City water hookup	S	S	S	S	S	S
Water filtration system	0	0	0	0	0	0
Washer/dryer prep	N/A	0	0	N/A	N/A	N/A
Washer/dryer combo	N/A	0	0	N/A	N/A	N/A
Telephone hookup	S	S	S	S	S	S
Cable TV/satellite hookup	S	S	S	S	S	S
Pre-wired for roof-mounted satellite dish	S	S	S	S	S	S
DSS manual satellite dish	0	0	0	0	0	0
Exterior shower	S	S	S	S	S	S
Carbon monoxide detector	S	S	S	S	S	S
LP gas detector	S	S	S	S	S	S
Smoke detector	S	S	S	S	S	S
<b>Weights and Measures</b>	<b>332</b>	<b>350</b>	<b>369</b>	<b>373</b>	<b>375</b>	<b>379</b>
Chassis	W/F*	W/F*	W/F*	W/F*	W/F*	W/F*
Wheelbase	208"	228"	228"	242"	242"	242"
GVWR (lbs.)	20.7k/20.5k	22k/22k	22k/22k	22k/22k	22k/22k	22k/22k
GCWR (lbs.)	26k/26k	26k/26k	26k/26k	26k/26k	26k/26k	26k/26k
Overall length	33'3"	36'6"	36'6"	37'11"	37'11"	37'11"
Overall width	101	101	101	101	101	101
Overall height with A/C	12'11'9"	12'11'9"	12'11'9"	12'11'9"	12'11'9"	12'11'9"
Fresh water system (appx. gal.)	100	100	100	100	100	100
Gray water (appx. gal.)	50	50	50	50	50	50
Black water (appx. gal.)	50	50	50	50	50	50
LP (lbs.)	103.5	103.5	103.5	103.5	103.5	103.5
Sleeping capacity	4	4	4	4	4	4
Std. wt. (appx. lbs.)	16975/16225	17925/17569	17918/17562	19315/18959	18301/17945	18351/17995
Ext. storage capacity (cu. ft.)	124	160	160	160	163	173
Interior drawers/capacity (cu. ft.)	21/11	26/14	30/20	18/12	31/17	33/18

The weights listed are for units with full fuel tanks and no options. \*Workhorse®/Ford®

*Damon*<sup>®</sup>  
Value by Design



If you are interested in touring Damon's manufacturing facilities, please visit our web site or call 800-860-5658.



Due to constant product improvements, the specifications, component parts and standard/optional equipment are subject to change without notice or obligation. Product photography or diagrams may show equipment that is optional. Damon Corporation reserves the right to make changes in prices and models and to discontinue models without notice or obligation. Components, parts or chassis may have been manufactured at times other than the model year indicated. All capacities are approximate and dimensions are nominal. All dry weights are based on standard model features and do not include optional features or equipment. Various RV components and features may differ to conform to local codes.

DC 8/02 © 2002 Damon Corporation Printed in U.S.A.

**Damon Corporation • P.O. Box 2888 • Elkhart, IN 46515**  
Literature or Dealers: 574-389-0179 or 800-577-5692  
Customer service 800-860-3812.  
[www.DamonRV.com](http://www.DamonRV.com)