

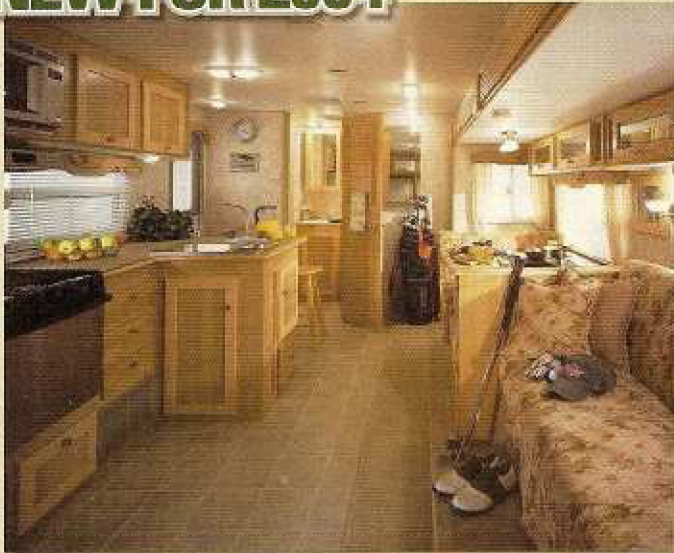


# 2004 Sunline

SOLARIS LITE  
SOLARIS • SOLARIS SR  
TRAVEL TRAILERS



## NEW FOR 2004



This year, our designers have created a brand new interior look. You'll love our maple panel cabinetry, highlighted by brushed nickel accents. We're featuring the perfect combination of new interior features on all Sunline models.

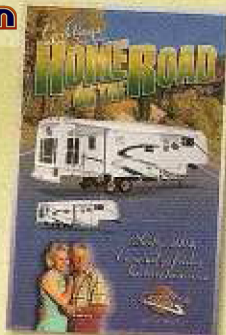


Brochure by **Sunline Fan**

The 2004 Sunline Fifth Wheels give you more reasons than ever to explore the open road!

Sunline makes a quality Fifth Wheel too! Request a copy of Sunline's 2004 Fifth Wheel brochure on our web site:

[www.sunlinerv.com](http://www.sunlinerv.com)



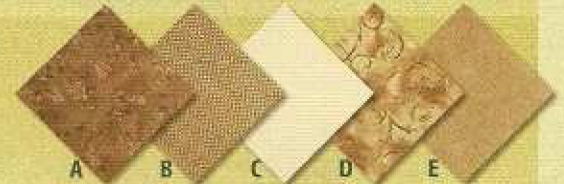
## CHOOSE YOUR FAVORITE COLORS

Choose one of our four appealing color selections, each coordinated with matching bedspreads, valances, carpet and curtains, and begin enjoying your home away from home.

### FERN BLUE



### NUTMEG FLORAL



### MEADOW ROSE



### FOREST GREEN



### WALLBOARD & WOOD GRAIN PANELS (ALL UNITS)



### FABRICS KEY:

- A - Converta Bed Sofa, Dinette, Accent Pillows
- B - Chair or Bunks / C - Curtain
- D - Bedspread / E - Carpet

*Greetings  
From*  
**SUNLINE**  
**COUNTRY**

*sunlinerv.com*



*Sunline 2004.  
Family getaways have  
never been easier.*



**Sunline**

TRAVEL TRAILERS

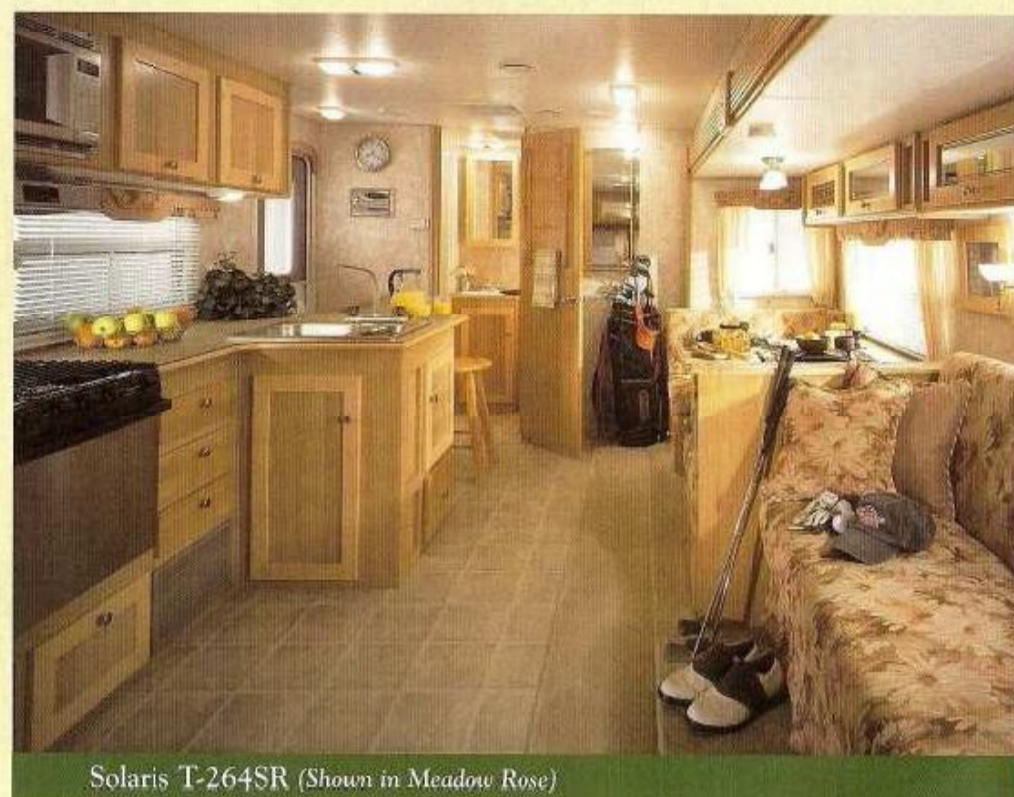
# Enjoy memorable family getaways with worry-free Sunline quality!

## GREETINGS FROM SUNLINE COUNTRY. THE PLACE WHERE ALL YOUR TRAVEL DREAMS COME TRUE.

A New, Modern Sunline Look. This year, our designers have created a brand new interior look. You'll love our maple panel cabinetry, highlighted by brushed nickel accents. We're featuring the perfect combination of unique interior features on all Sunline models including five new travel trailer floorplans:

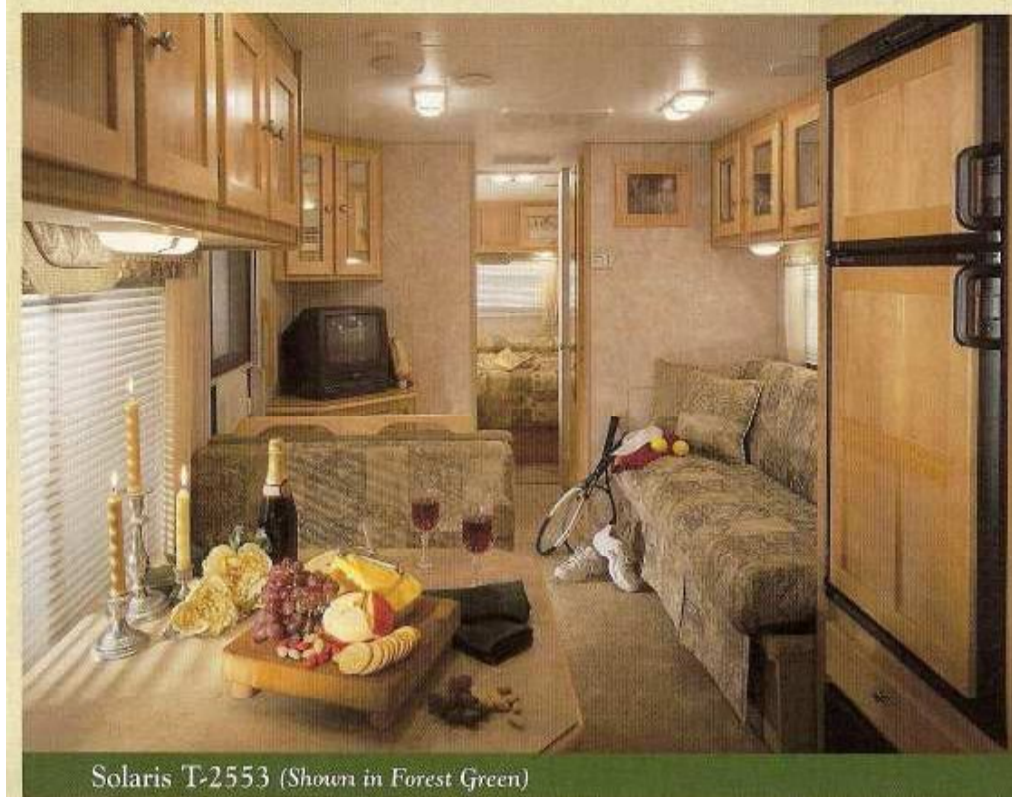
- Shaker style cabinet doors
- Brushed nickel lighting & kitchen faucet
- Natural colored countertop
- European roll-up shower door

39 Years of Experience Designing Convenience and Comfort: We're making it easier for you when you travel too. New this year, we've added a battery cut-off switch connection in a convenient location – the front frame.



Solaris T-264SR (Shown in Meadow Rose)

Flexible dining is key to this unit's floorplan. Eat at the dinette or bar, or opt for a free-standing table and chairs. The rear bath gives this unit plenty of walk-around room. Pass-through storage and large drawers are conveniently placed under the island queen bed.



Solaris T-2553 (Shown in Forest Green)

Featuring Sunline's exclusive switch-back dinette, this front kitchen model offers couples plenty of comfort while traveling. Walk through the bath area to the rear island queen bed (optional twin available).



SOLARIS LITE • SOLARIS



SOLARIS SR



## 2004 Sunline

Family getaways have never been easier.

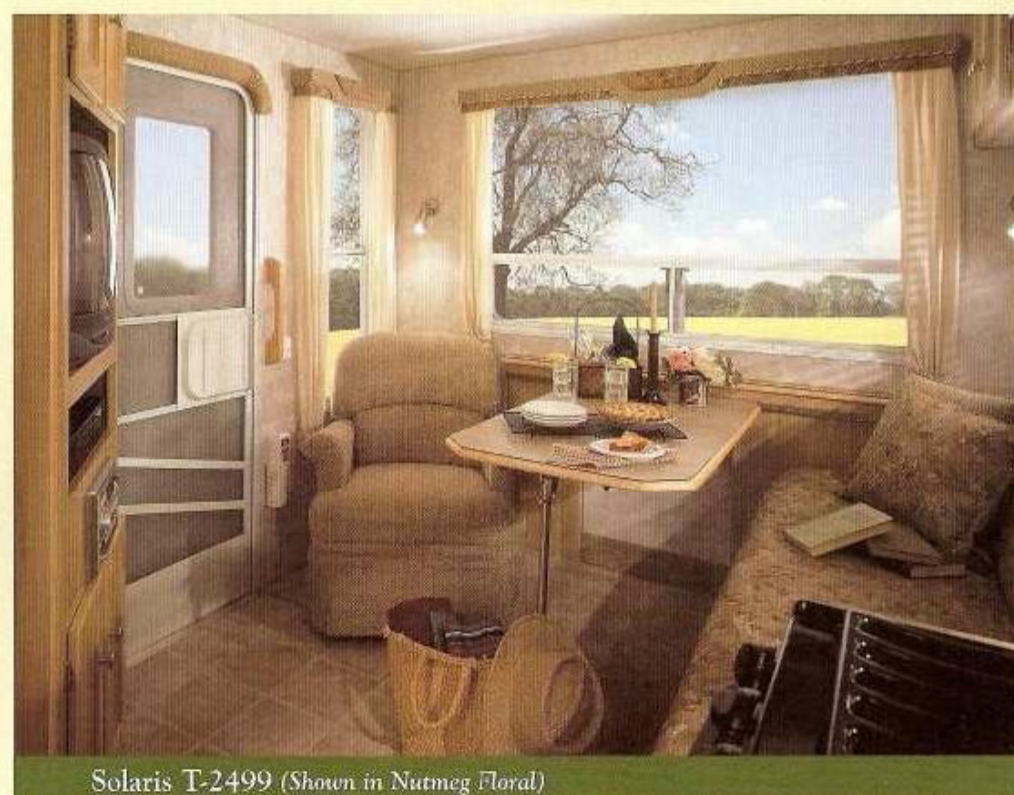
You'll also find more storage both inside and out. Easy-open drawers are featured under many beds, and a new front pass-through area adds large and extra long storage access in all front bedroom models (optional storage tray available). There are more conveniences too, like built-in waste baskets and hidden peg boards inside large, side luggage areas where possible.

For extended stays, we've added a comfy pillow top option for the bedroom mattress. Slide-out room sleeper sofas have an extra air bed option.

Travel In Confidence With Your Sunline. We build our product to provide many years of camping enjoyment. Our comprehensive Three Plus Two Warranty gives you peace of mind. Just ask a current Sunline owner about their unit's dependability. It's no wonder Sunline has received the coveted Circle of Excellence Award\* two years running.

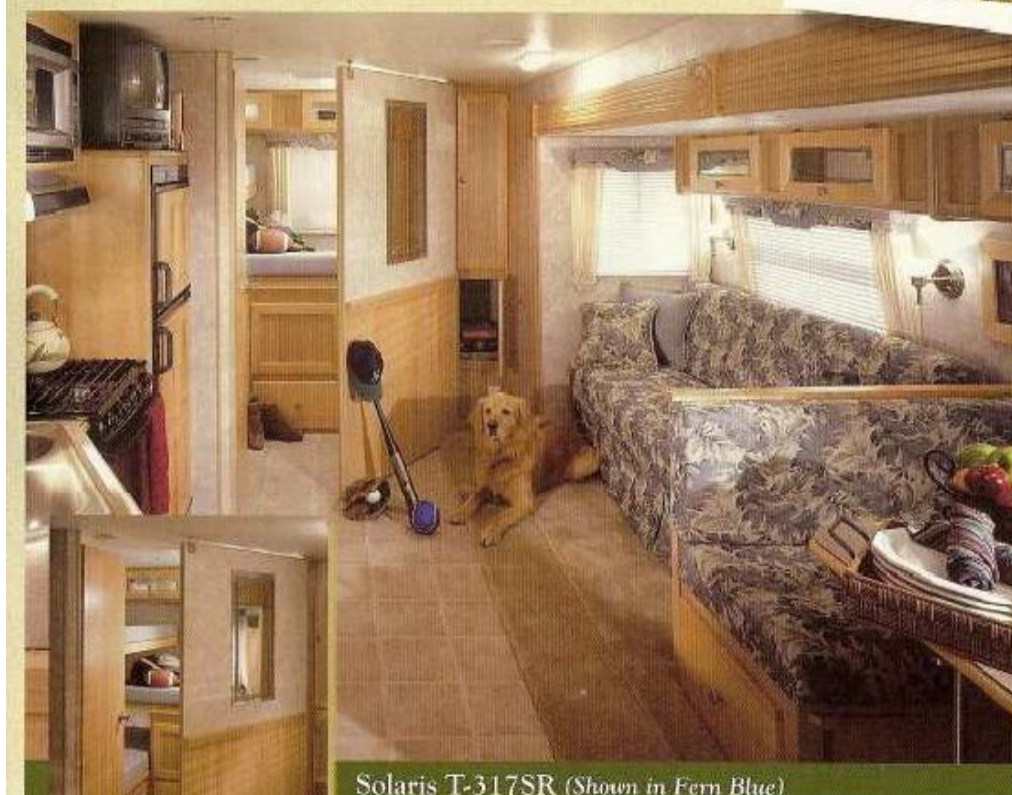
Take To The Outdoors On Your Terms. Whether you're planning on sightseeing, visiting relatives, shopping, seeing the "big game" or just spending time with your family around the campfire, your Sunline is always ready to travel a new road – at your pace...Be Ready To Go!

\*Sunline was one of only six manufacturers given this award in 2001 and 2002 by the National Recreational Vehicle Dealer Association (RVDA). A DSI (or Dealer Satisfaction Index) survey asks dealers nationwide to list these manufacturers for whom he or she sells product and rate them in the following categories: Sales, Product, Management and Service/Warranty Support.



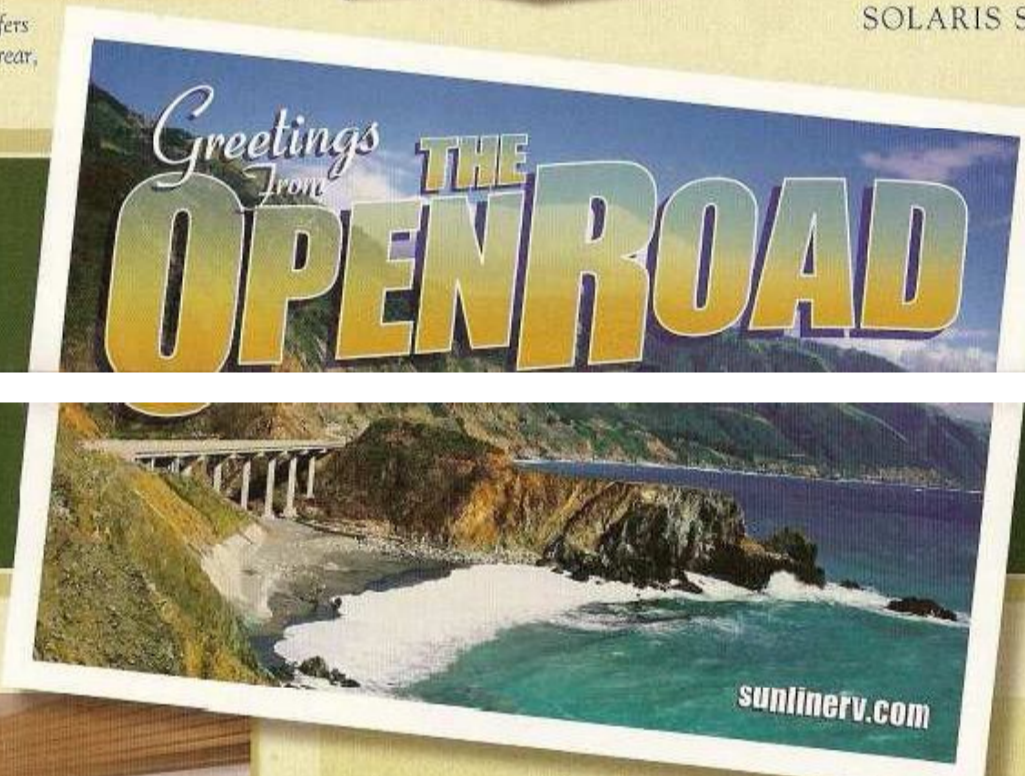
Solaris T-2499 (Shown in Nutmeg Floral)

As a couple-friendly floorplan, this unit is popular for its spacious rear window view. It also features a handy pull-out pantry, large entertainment center, outside storage with peg board, and pass-through storage under the queen bed. This is the only 25' towable rear living room trailer on the market.



Solaris T-317SR (Shown in Fern Blue)

This unique unit features a sofa and dinette slide, walk-around queen bed and a private rear bedroom with solid wall and door. The wall and door fold out to create a private bedroom for the three bunk area.



Ready to go wherever your plans lead.

### Sunline's Three Plus Two Warranty

Sunline has a strong 39 year history in the industry and provides a comprehensive Three Plus Two Warranty against defects in materials and workmanship. Simply stated, the three year warranty covers any structural part of the trailer made by Sunline. Separate manufacturers' two year (or longer) warranties cover most components in the unit, like Dometic refrigerators, Atwood® water heaters, SHURflo® water pumps and Flexsteel® furniture.

A copy of our warranty is included in the Owner's Manual of each unit. For our complete warranty policy, just ask your Sunline dealer.



### Travel easily on the information highway...

Visit our web site, [www.sunlinerv.com](http://www.sunlinerv.com). It's loaded with interactive gadgets and helpful camping tips. You can even step into one of our Quick Time Virtual Reality (QTVR) trailers and view the interior of a Sunline. All the information you need on buying and enjoying your Sunline is just a click away.

## All the spacious comforts of home.

# SOLARIS/SOLARIS LITE

Model  
 Unloaded Vehicle Weight (without options) (lbs.)  
 GVWR (Gross Vehicle Weight Rating)  
 Interior Height  
 Exterior Height (includes A/C)  
 Awning Size  
 Fresh Water System (approx. gals.)  
 Gray Water System (approx. gals.)  
 Septic System (approx. gals.)  
 Furnace-BTUs / Auto Ignition

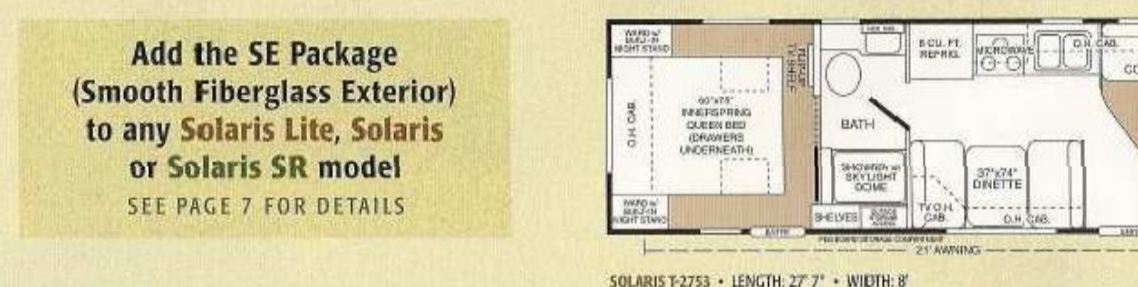
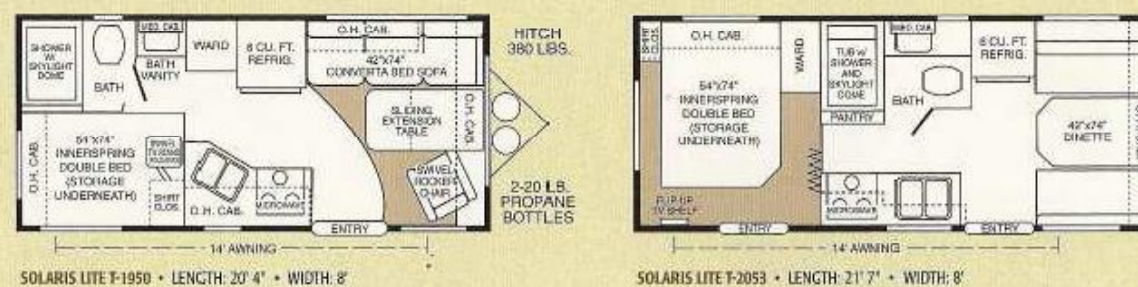
**Solaris Lite Models**

T-1950	3815	5500	6'6"	9'8"	14'	24	25	25	20,000
T-2053	3785	5500	6'6"	9'8"	14'	24	25	25	20,000
T-2075	N/P	5500	6'6"	9'8"	14'	24	25	25	20,000
T-2199	N/P	5500	6'6"	9'8"	14'	24	25	25	20,000
T-2363	4200	5500	6'6"	9'8"	16'	34	25	25	20,000
T-2475	4825	5500	6'6"	9'8"	16'	24	25	25	20,000

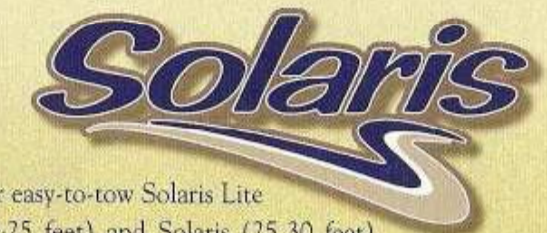
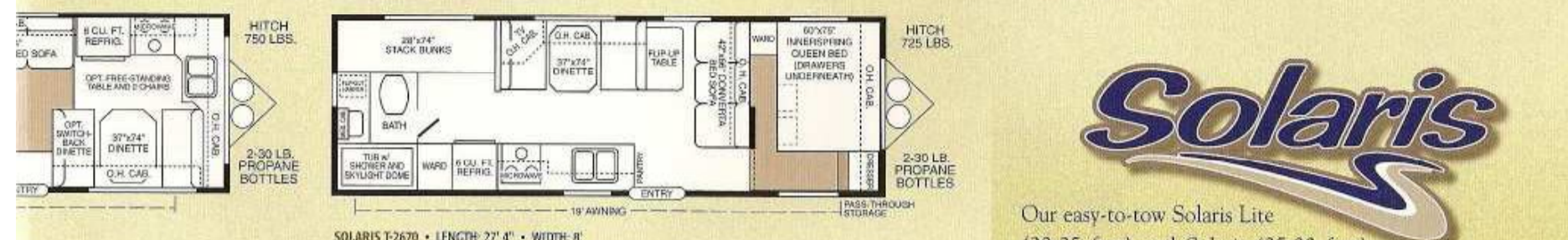
**Solaris Models**

T-2499	4785	7000	6'6"	9'8"	16'	40	35	30	25,000
T-2553	4735	7000	6'6"	9'9"	19'	32	35	30	25,000
T-2570	4695	7000	6'6"	9'8"	17'	32	35	30	25,000
T-2653	4850	7000	6'6"	9'8"	19'	34	35	30	25,000
T-2670	4855	7000	6'6"	9'8"	19'	32	35	30	25,000
T-2753	4975	7000	6'6"	9'8"	21'	32	35	30	25,000
T-2980	5325	7000	6'6"	9'9"	21'	34	35	30	31,000

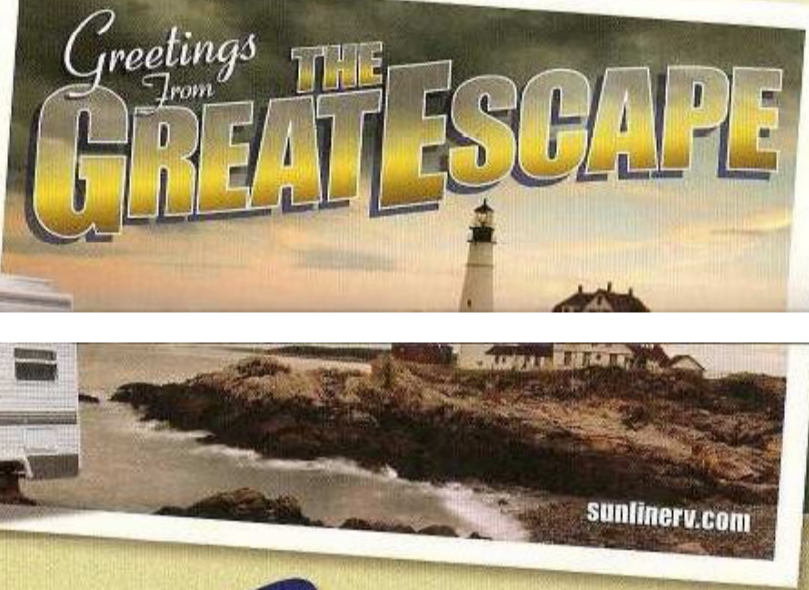
\*All weights are approximate and are for standard equipped models. Weights will vary according to installation and distribution of options, self-contained liquids and construction materials. Some weights are based on 2003 models.  
 N/P - Not available at time of printing. Check our web site (www.sunline.com) for updates.



Add the SE Package (Smooth Fiberglass Exterior) to any Solaris Lite, Solaris or Solaris SR model. SEE PAGE 7 FOR DETAILS



Our easy-to-tow Solaris Lite (20-25 feet) and Solaris (25-30 feet) models each have their own advantages for couples or families. An aluminum exterior (optional fiberglass package) with new stripe graphic is standard.



# Sunline 2004 Sunline

Solaris Lite • Solaris • Solaris SR

## SOLARIS SLIDE ROOM

Model  
 Unloaded Vehicle Weight (without options) (lbs.)  
 GVWR (Gross Vehicle Weight Rating)  
 Interior Height  
 Exterior Height (includes A/C)  
 Recommended Awning Size  
 Fresh Water System (approx. gals.)  
 Gray Water System (approx. gals.)  
 Septic System (approx. gals.)  
 Furnace-BTUs / Auto Ignition

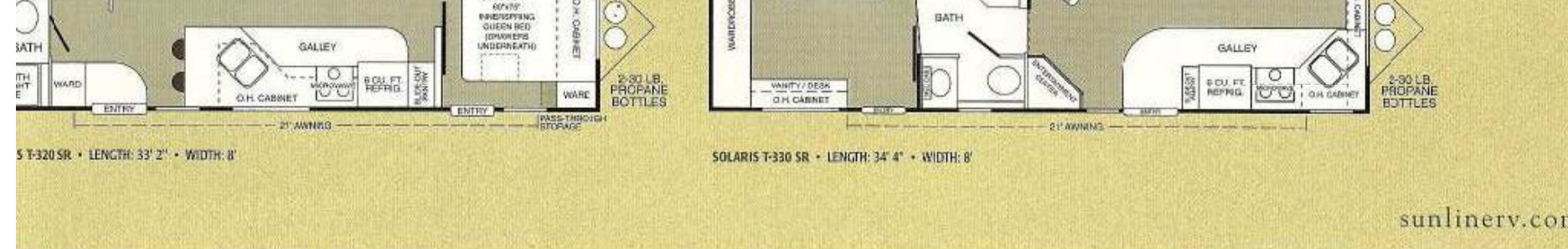
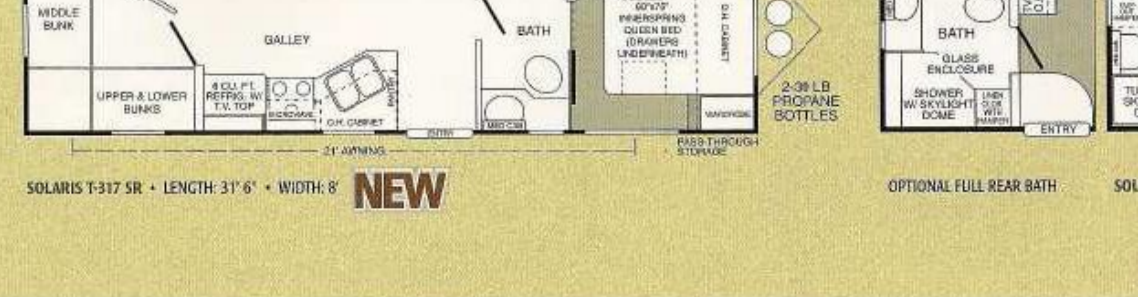
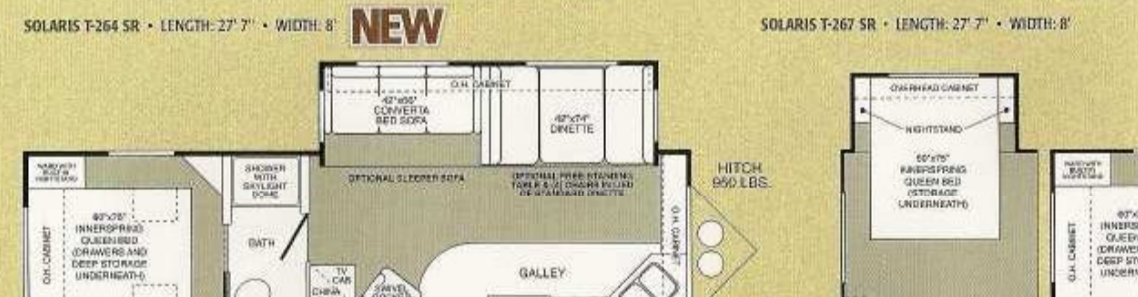
**Slide Room Models**

T-264 SR	6330	8600	6'6"	10'7"	19'	40	35	25	31,000
T-267 SR	6100	8600	6'6"	10'7"	19'	32	35	25	31,000
T-279 SR	N/P	8600	6'6"	10'7"	19'	40	35	30	31,000
T-280 SR	6600	8600	6'6"	10'7"	21'	40	55**	30	31,000
T-299 SR	6765	10,000	6'6"	10'7"	21'	40	35	30	31,000
T-310 SR	7150	10,000	6'6"	10'7"	21'	40	35	40	31,000
T-317 SR	7065	10,000	6'6"	10'7"	21'	32	35	30	31,000
T-320 SR	6810	10,000	6'6"	10'7"	21'	40	35	30	31,000
T-330 SR	7665	10,000	6'6"	10'7"	21'	40	55**	25	31,000

\*All weights are approximate and are for standard equipped models. Weights will vary according to installation and distribution of options, self-contained liquids and construction materials. Some weights are based on 2003 models. \*\*Combined two tank total.  
 N/P - Not available at time of printing. Check our web site (www.sunline.com) for updates.

### ABOUT WEIGHTS

**GVWR** - Gross Vehicle Weight Rating (listed in the specifications). This is NOT the weight of the trailer. This is what the trailer is rated to carry. It is the total maximum allowable weight of the fully loaded trailer (not to be exceeded) which includes the unloaded vehicle weight, all fluids, cargo, optional equipment and accessories. This number, along with other maximum safe vehicle weights, are shown on the Safety Compliance Certification label, located on the exterior left front floor (off side) of each unit.  
**UVW** - Unloaded Vehicle Weight (listed in the specifications). This is the weight of this trailer as manufactured at the factory. It includes all weight at the trailer axle(s) and tongue or pin (hitch weight).  
**Hitch Weight** - or tongue weight (listed with the floorplan). Amount of the unloaded vehicle weight that is supported by the tow vehicle.



With the push of a button, the dinette and sofa slides offer additional living space. Our double slide-outs give you even more room! Floorplans range in size from 27 to 34 feet. SRs have an aluminum exterior with new stripe graphic (an optional fiberglass package is available).

**FLOORPLANS KEY**

- Interior dotted line denotes overhead cabinets or sliding doors.
- Exterior dotted line denotes awning and arm placements.
- Shaded areas indicate carpet.
- Length measured from bumper to hitch.

## STANDARD FEATURES

### Quality and Value are Built Standard into Every Sunline.

For 2004, we've made many of our best-selling options standard features on every trailer:

- ✓ Dometic Air Conditioning
  - (11,000 BTU roof mount A/C on models T-1950 thru T-2363)
  - (13,500 BTU roof mount ducted A/C on models T-2475 thru T-2980 and models T-264SR thru T-330SR)
- ✓ Dometic A&E awning (21' awnings include center tension rafter)
- ✓ RV approved Dometic microwave with rotating glass plate
- ✓ TV antenna w/booster system
- ✓ SeaLand china bowl toilet features a household seat with pressure rim design, deep bowl, foot pedal flush and hand sprayer for easy cleaning. The bowl carries a 10 year warranty.
- ✓ Kitchen kit (range top cover, maple paper towel holder and sink cover)
- ✓ Wall clock (pictured)
- ✓ Stereo w/CD player (pictured), 4 speakers and exterior antenna
- ✓ Bath window w/venetian blind
- ✓ Outside shower
- ✓ Swing-away grab handle (slide models only, opt. on non-slides)
- ✓ Double pane shower skylight dome
- ✓ Medicine cabinet with built-in lips on shelves to help prevent items from falling during travel
- ✓ Locking access doors (fresh fill, power cord)



- ✓ Large, double door gas/electric Dometic refrigerator w/auto changeover feature (automatically changes to propane if electricity fails)
- ✓ Gas/electric water heater with interior push button auto ignition
- ✓ Deep oven, 3-burner high output range w/piezo ignition (opt. sealed burner w/direct spark ignition)
- ✓ Pass-through storage (front bedroom models) and peg-board storage (select models)
- ✓ Drawers under beds (most models)
- ✓ Particle board free construction
- ✓ Maple-edged countertops and nightstands with Wilsonart® and Formica® brand laminates
- ✓ Real wood 3/4 inch thick stile and rail cabinets screwed together
- ✓ Maple Shaker-style doors w/solid maple drawer fronts
- ✓ Upgraded 390 coil innerspring queen mattress (double beds 312 coil)
- ✓ Four-sided real wood lap jointed drawer box for extra strength
- ✓ 35 oz. residential polypropylene-backed carpet with 5.5 lb. density padding. Guaranteed to resist moisture and mildew.
- ✓ European shower door - New for '04, the easy clean, mold and mildew resistant European shower door is standard on all models. A built-in wiper blade to squeegee clean the screen makes cleanup automatic. Sunline's full height shower surround (also shown) extends to, and is sealed at the ceiling.



## SUNLINE OPTIONS

### Add Your Favorite Finishing Touches...

We offer additional options on all Sunline models. Some options and accessories may not be available on certain models, be sure to check with your dealer for the standard and optional features on your particular model and floorplan.

- Sealed burner with high output range with electronic ignition and deep oven
- Deluxe hinged-top LP 30 lb. bottle cover
- Outside grill
- Twin beds (select models only)
- Large swing-away grab handle (standard on SRs)
- Winterizing kit
- Black tank rinse kit (efficient, easy way to clean tank)
- Under bed storage kit (standard on most models)
- Single lever, brushed nickel, pull-out spray spout kitchen faucet (pictured)
- Independent rubber ride suspension (rubber ride axles N/A in Solaris SRs)
- Switch-back dinette (select models)
- Spare tire kit (tire, wheel, cover and carrier)
- Satellite dish pre-wire (Solaris SRs only)
- Sunline already uses one of the highest quality mattresses (390 coil) in the industry. For added comfort on extended stays, add a pillow top option (pictured).
- Sliding glass patio door w/curtain or optional vertical blinds (1-320 only)
- Extra large double door refrigerator (select SR models)



- All of our front bedroom models feature under bed pass-through storage. Organize your gear and make it easier to access with an optional slide-out storage tray (20" w x 86" l x 8" d). Outside grill opt. shown inside storage tray (pictured).
- Sleeper sofa (select SR models)
- Air bed mattress for sleeper sofa
- Slide Room topper awning (pictured) (Solaris SRs only)
- 15,000 BTU A/C
- Power hitch jack w/light
- Stabilizer/leveling jacks (standard on SR models)



### SE Package For A Smooth, Streamlined Shape

Sunline's SE Package is a smooth fiberglass exterior upgrade for the Solaris Lite, Solaris, and Solaris SR travel trailers. A seamless fiberglass exterior with special sport graphics offers features like double-backed walls, better resale value, dent resistance and easy cleaning. Ask your dealer for more information on Sunline's smooth fiberglass exterior.



**Additional Options Shown:**  
Aluminum wheels, Max Air® vents



Sunline is able to modify most floorplans for those with special needs. Visit the special needs link [www.sunlinerv.com/modifications.asp](http://www.sunlinerv.com/modifications.asp) on our web site to see a virtual reality image of a modified model, then see your dealer for assistance in planning the alteration of a unit that fits your specific special needs.

# Sunline 2004 Sunline

Features • Options • Construction

## QUALITY CONSTRUCTION

### Our Trailers Cost a Little More Because Lasting Quality is Built into Every Unit. See the Differences for Yourself.

At Sunline, a quality travel trailer begins with a strong solid steel frame. Sunline uses an extra wide front cross member for maximum stiffness at the front of the frame. Z-shaped cross members are used throughout the length of the frame with extra cross members in high traffic areas such as the galley.

Sunline purchases 24" sections of Structurewood™ (25 year limited warranty), so most Solaris trailers have a one-piece floor. A floor with one or no seams means the travel trailer is more rigid and has a more stable floor. Our floor framing is now thicker for an even stronger floor.



All models come with a seamless, one-piece rubber roof (12 year limited warranty). Carlisle rubber roofs are cooler, quieter, and more puncture resistant than metal roofs. Exterior sidewalls use Krystal Kote®, a no-wax low maintenance metal finish that protects against minor scratches and dents.

All of Sunline's roofs are constructed with radius truss rafters for maximum strength and water runoff. On all ducted air-conditioned models, insulated air ducts are used for more energy efficient cooling. R-7 insulation is used throughout roofs, floors, fronts, backs and sidewalls on all of our Solaris models.



All cabinets are screwed together, not stapled. Sunline cabinets are handcrafted with real wood core stock. Real wood core will not warp or expand like particle board. All cabinets are constructed using 3/4" thick stiles (not thinner like some of the competition).



All cabinets are screwed into the floor, sidewall, and ceiling for extra strength. Many competitors use staples to fasten their cabinets, but Sunline's method of fastening makes the cabinets part of the total structure and strengthens the unit overall.



Maple-edged countertops are another feature that set every Sunline apart from the competition. Countertops are constructed using a framework of real wood (not particle board) with Wilsonart® or Formica® laminated to the surface. This construction method takes a little longer, but results in a countertop that is stronger and lighter. The outside maple edge is shaped and hand finished for lasting quality.



To better control our quality, Sunline constructs more parts than most RV manufacturers. Our window treatments, curtains, and many other fabric items are made in-house in our decor shop.



## OLDEST SUNLINE SEARCH

### In Celebration of Sunline's 40th Anniversary... THE OLDEST SUNLINE TRAVEL TRAILER SEARCH!

The nationwide search is on for the oldest Sunline travel trailer.

In anticipation of Sunline's 40th Anniversary next year, we're doing something special. We're looking for the oldest Sunline still on the road. If we determine you have the oldest, still roadworthy Sunline - you win the grand prize: a brand new 2005 Sunline travel trailer! In addition, the 10 oldest roadworthy Sunline units that are found will win Sunline memorabilia for their owners!

Deadline for all entries is March 1, 2004.

We'd LOVE to see a picture and hear the story of your older Sunline! Look for a special section dedicated to your entries on our web site. Send your information via mail (40th Anniversary Contest, Sunline Coach Company, 245 South Muddy Creek Rd., Denver, PA 17517) or via email at: [infosunlinerv.com](mailto:infosunlinerv.com) (jpegs, no large files). Be sure to include your name, address, phone number and email so we can contact you in the event you're the winner.

Our celebration of 40 years in the RV business means a great deal to us and we know your Sunline has meant a great deal to you! Tell us your stories and be sure to send in a picture of your Sunline RV. Even if you know your unit isn't going to be the oldest or you're uncertain of the year - we'd still love to hear from you during our special celebration!

Sunline Coach Company is the sole and final judge of roadworthiness (as it pertains to this contest) and the sole and final judge of the age of any Sunline vehicle entered into the contest. These determinations are entirely and completely within the sole discretion of Sunline Coach Company. The grand prize is brand new 2005 Sunline Travel Trailer may not be substituted or exchanged for another Sunline vehicle. The Sunline Travel Trailer awarded will be provided (as is) and without additional options or equipment. The winner of the contest is responsible for paying all sales tax and costs associated with tags and licensing. For complete entry rules and guidelines, see your Sunline dealer or visit the contest area on our web site, [sunlinerv.com](http://sunlinerv.com). Sunline Coach Company reserves the right to alter or change the terms and conditions of this contest at any time without further publication.



### Sunline Member Associations

As a member of the Recreational Vehicle Industry Association (RVIA) and the Canadian Standards Association (CSA)™ Sunline manufactures its recreational vehicles to meet or exceed the requirements for the installation of plumbing, fuel burning, electrical and fire & life safety related items. In addition, each of our employees takes part in continuous improvement training and key personnel are certified in test procedures. Every model carries the RVIA or CSA logo proudly and Sunline maintains one of the best inspection records in the industry.



\*Not all models are available in Canada. See your dealer for information on which models are CSA approved and if there are any differences between those mentioned in this brochure. Note: Due to Canadian code, 4" in length must be added to all CSA travel trailer A-frames. This extra length may slightly affect hitch and axle weight figures. To meet CSA standards, some standard features on certain models may be different. Natural variations in the maple wood grain cabinetry patterns can occur.

**SUNLINE IS A PROUD SUPPORTER OF THE Go RVing- CAMPAIGN!**

**Go RVing**  
Life's A Trip™

### Your Safety Comes First

Sunline maintains a sophisticated scale system on-site that allows us to pinpoint weights for each of our trailers. We pay particular attention to a unit's ability to meet proper towing criteria and list an "About Weights" section on each of our floorplan and spec pages to guide you in the tow vehicle and trailer matching process. Your safety and satisfaction when towing depend upon the proper match of tow vehicle to RV and the proper installation and use of correct trailer towing accessories, such as hitch, sway and brake controls. Be sure to consult your car or truck dealer as well as RV and hitch dealer for proper equipment selection. When loading your RV, make sure you practice proper weight distribution and load capacity for the best towing results.

Note: Sunline's policy of continual design and manufacturing improvements requires that models, specifications, equipment, interior materials and prices be subject to change without notice. In addition, Sunline reserves the right to discontinue models without notice or obligation and to improve models without incorporating those changes in similar models produced at an earlier date.





245 South Muddy Creek Road  
Denver, Pennsylvania 17517-9773  
Phone 717-336-2858 • Fax 717-336-0527  
[sunlinerv.com](http://sunlinerv.com)  
[info@sunlinerv.com](mailto:info@sunlinerv.com)

Visit your nearest Sunline dealer:



SOLARIS LITE • SOLARIS



SOLARIS SR

*Family getaways have never been easier.*