

Bounder



2004

Explore Bounder's Features and Benefits.

Triple Slide Floor Plan — New 34F offers spacious living area with angled galley, pantry and large master suite.

Flex-o-lator Dinette Seating — Spring suspension seating for superior comfort/Two position adjustable.

Lockable Spare Tire Storage — Secures spare tire at rear of coach to optimize exterior storage.

New Dinette Storage Drawers — Full-length drawers with heavy-duty guides offer convenient access to stored items.

EZ Store Slide-Out with End Panel Access — Offers easy access to exterior luggage compartments for longer items.

Electronic Climate Control — Provides efficient, automatic operation of cooling system while integrating energy management.

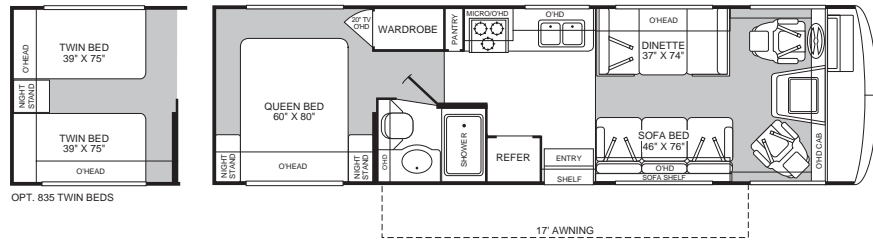
Cross Linked Polyethylene Front Bumper — Damage resistant offers strength and durability in this damage prone area.

Dash Top Fuse Access Panel — Allows easy access to automotive fuses without climbing under dash.

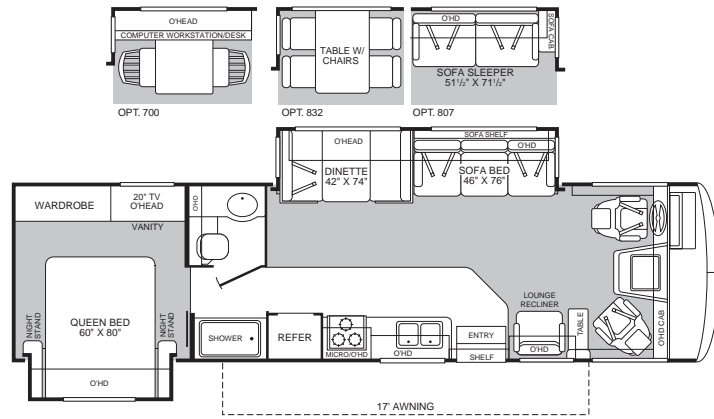
Vinyl Entry Area — Extend from the entry door thru the galley to reduce carpet wear and provide easy clean up.

By Fleetwood — a name you know, a name you trust.

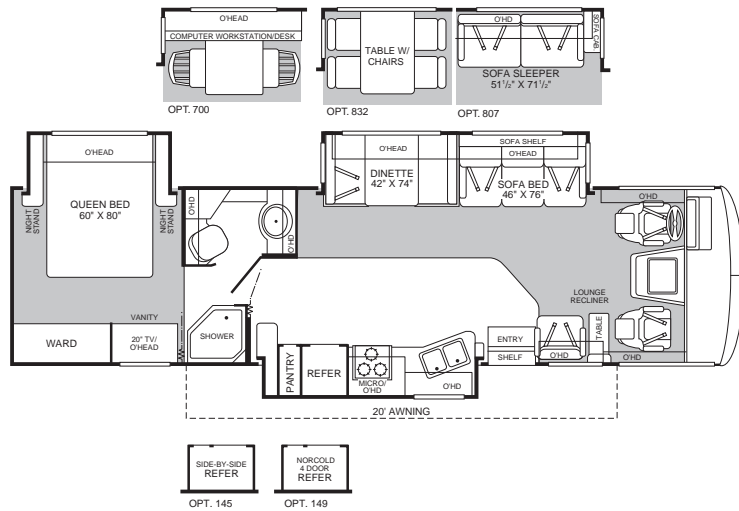
Model 30P



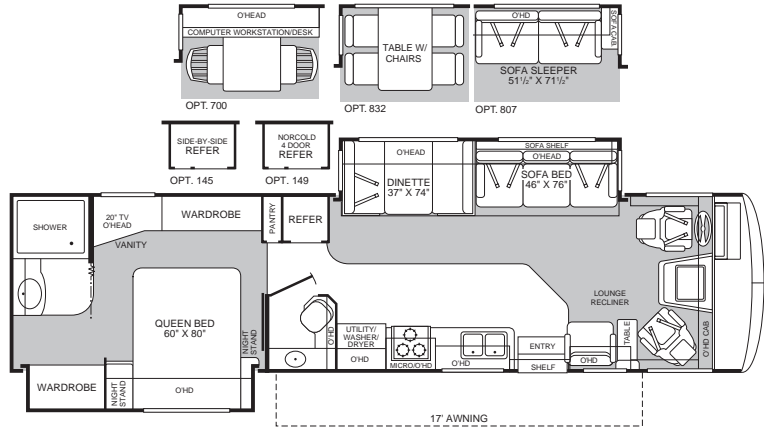
Model 32W



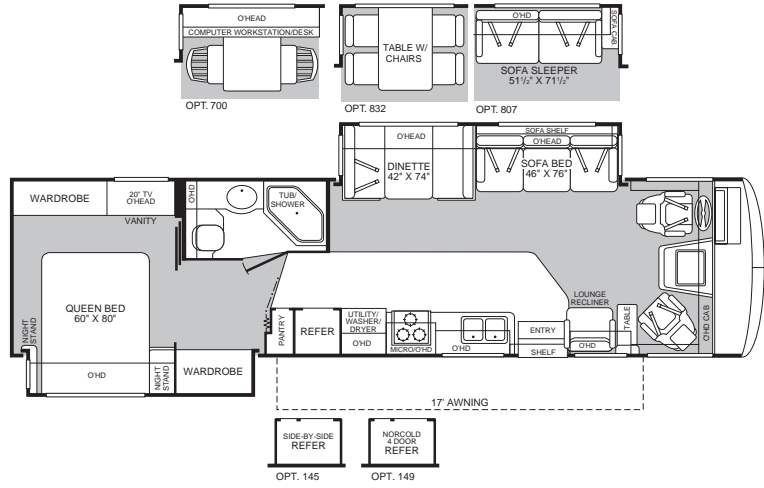
Model 34F



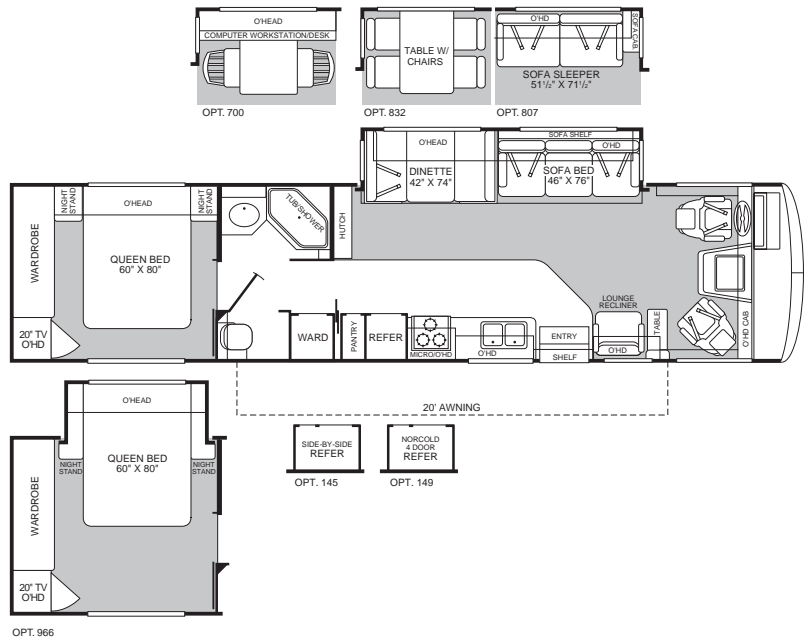
Model 35E



Model 35R



Model 36S



Standard Features

Appliances

- Front 27" Panasonic® Stereo TV in Overhead
- Rear 20" Panasonic® TV
- Hi-Fi VCR
- Smoke Detector/Alarm
- LPG Detector/Alarm
- CO Detector/Alarm
- 34,000 BTU Furnace (30,000/20,000 BTU on 34F Only)
- 10-Gallon, Quick-Recovery Water Heater with D.S.I. (Gas/Electric)
- 3-Burner, High-Output Range w/Oven
- Light/Power Range Hood
- Monitor Panel in Dash
- Folding Range Cover
- Dual Roof A/C High Efficiency w/Solar Panel on Front A/C
- Water Heater Bypass System
- Porcelain Toilet with Water Saver
- Toilet Tank San-T-Flush™ System
- 1.0-cu. ft. Microwave
- 8-cu. ft. Dometic® Double Door Refrigerator
- Single-Lever Galley Faucet with Sprayer
- Water Filter with Faucet
- Demand Water Pump with Filter
- TV Antenna
- Fan-Tastic® Power Roof Vent—Galley
- Fire Extinguisher (ABC Rated)
- Telephone Jack in Dash and Bedroom
- Rear Speakers in Bedroom
- DSS Manual Lift Satellite Dish

Body Structure

- Vacu-bond® Upper/Lower Floors
- Vacu-bond® Walls with Smooth High-Gloss Exterior Fiberglass
- Radius Roof with Ducted A/C
- Royal Tuff-Ply™ Roof
- Aluminum Interlocking Floor/Wall/Ceiling Framing

Electrical

- Dual Patio Receptacles
- 120V/12V AC/DC Converter
- Central Electrical Panel
- 3-Way Water Pump Switch
- 5.5kW Onan® Generator
- 30-amp Service
- Wall Switches
- Electronic Climate Control Systems
- Dual 6V/Deep-Cycle 218-amp House Batteries

Exterior

- Fiberglass Front/Rear Cap
- Rotocast Front Quarter Panels
- ABS Rear Wheel Well Trim
- Entry Door with Deadbolt Latch
- Dual Pane Windows
- Awning
- Utility Compartment with Exterior Shower

- TV/12V Jack in Doorside Compartment
- 4-Point Automatic Hydraulic Levelers (Optional on P Model)
- Roof Ladder
- Remote Heated Rear View Mirrors
- Spare Tire
- Park Cable Receptacle
- Awning Rail/Drip Molding (Both Sides)
- Power Entry Step
- Dual Battery Charge Control
- Porch Light
- 3 Colorway Graphics to Match Decor

Exterior Automotive

- Large, Curved Aerodynamic Bonded in Windshield
- Undercoating
- Wheel Simulators
- Valve Extenders
- Underhood Utility Light
- Steel Surface on Bulkhead
- Trailer Hitch with 7-Point Electrical Hook-Up*
- Large Headlamps
- Rear Vision Camera
- Single Motor Windshield Wipers with Wet Arm
- Mud Flaps

Exterior Storage

- Insulated Aluminum Luggage Doors
- Single-Paddle/Metal Latches
- Continuous One-Piece Bulb Seal
- Stainless Steel Door Hinges
- Hidden Lift Strut Supports
- Lighted Compartments
- Rotomolded Compartments

Interior

- 3 Interior Decors
- Skylight in Tub/Shower
- Plush Wall-to-Wall Carpet w/Carpet Pad
- Wood Drawers
- Roller Guide Drawer Slides with Transit Ship Locks
- Radius Corner Cabinetry
- Coordinated Cabinet Hardware
- Pleated Shades
- Bedspread with Decor Pillows
- Restonic® Innerspring Mattress
- Solid Surface Countertop—Galley
- Vinyl Flooring in Galley & Bath
- Flex-o-lator® Dinette Seating
- Hardwood Bath Door/Trims
- Trash Basket in Galley
- Large Drawers Under Dinette
- Molded Tub/Shower Enclosure
- Coordinated Bath Accessories
- Residential Seat Styling
- Entry Rail
- Glass Shower Doors
- Raised-Panel Cabinet Doors
- Flat Panel Base Cabinet Doors
- Adjustable Cabinet Shelves (Selected Cabinets)
- Lounge Recliner

- Pillow Top Mattress
- Sink Cover Cutting Board
- Solid Divider Doors
- Large, Double Stainless Steel Sink in Galley

Interior Automotive

- Intermittent Wiper Control
- Double Swivel Sun Visors w/Map Pockets
- Cruise Control
- AM/FM/Cassette Radio
- Auxiliary Start Circuit
- Battery Shut-Off Switch
- Auto A/C Heater Combo
- Radio Switch—Main/Auxiliary Power
- Soft-Surface Automotive Dash
- Driver/Passenger Captain's Chairs with Reclining Back/Slide Controls
- Low Profile Engine Cover
- Dash Fans
- Tilt Steering Wheel
- 3-Point Seat Belts on Driver/Passenger Seats

Interior Lighting

- Wardrobe Lighting
- Fluorescent Lighting
- Decor Lighting
- Incandescent Lighting
- Bedroom Lighting

Platform Construction

- Basement Floor Configuration
- Heated Water & Holding Tank Compartments
- Polyethylene Luggage Compartment Boxes
- EZ-Store™ Compartment on Living Area Slide-Outs
- Power Platform*
- Coach Vibration Isolators

*The chassis manufacturer recommends the installation of a supplemental brake control system to activate the brakes on the vehicle or trailer you are towing.

Options

- 3-Burner Cook Top
- Washer/Dryer (Select Models)
- Torque Windows in Bedroom
- 12-cu. ft. Side-by-Side Dometic® Refrigerator w/Ice Maker (Select Models)
- Norcold® 4-Door Refrigerator w/Ice Maker (Select Models)
- CSA Package
- Electric Awning
- Convection Microwave
- Computer Work Station
- Stereo with AM/FM/CD/Cassette
- Free-Standing Dinette with Chairs
- CB Radio Ready
- 300 Watt Inverter (Bedroom TV and VCR)
- Ultraleather™ Driver/Passenger Seats*

Ford® Chassis	30P	32W	34F	35E	35R	36S
Engine LD	6.8L	6.8L	6.8L	6.8L	6.8L	6.8L
Wheelbase	190"	208"	228"	228"	228"	228"
GVWR (lbs) (1)	18,000	20,500	22,000	22,000	22,000	22,000
Front GAWR (lbs) (2)	7,000	7,000	7,500	7,500	7,500	7,500
Rear GAWR (lbs) (2)	11,000	13,500	14,500	14,500	14,500	14,500
Base Weight (lbs) (3)	14,100	16,100	17,200	16,750	16,750	16,800
GCWR (lbs) (4)	23,000	25,500	26,000	26,000	26,000	26,000
Hitch Rating Weight (lbs)*	5,000	5,000	5,000	5,000	5,000	5,000
Tongue Weight (lbs)*	500	500	500	500	500	500
Fuel Capacity (gal)	75	75	75	75	75	75
Workhorse® Chassis	30P	32W	34F	35E	35R	36S
Engine LD	N/A	8.1L	8.1L	8.1L	8.1L	8.1L
Wheelbase	N/A	208"	228"	228"	228"	228"
GVWR (lbs) (1)	N/A	20,700	22,000	22,000	22,000	22,000
Front GAWR (lbs) (2)	N/A	7,500	8,000	8,000	8,000	8,000
Rear GAWR (lbs) (2)	N/A	13,500	14,500	14,500	14,500	14,500
Base Weight (lbs) (3)	N/A	16,450	17,700	17,400	17,400	17,450
GCWR (lbs) (4)	N/A	25,700	26,000	26,000	26,000	26,000
Hitch Rating Weight (lbs)*	N/A	5,000	5,000	5,000	5,000	5,000
Tongue Weight (lbs)*	N/A	500	500	500	500	500
Fuel Capacity (gal)	N/A	75	75	75	75	75
Dimensions and Capacities	30P	32W	34F	35E	35R	36S
Overall Length (5)	30' 10"	32' 10"	34' 4"	35' 10"	35' 10"	36' 10"
Overall Height (with A/C)	12' 0"	12' 0"	12' 0"	12' 0"	12' 0"	12' 0"
Overall Width (maximum) (6)	102"	102"	102"	102"	102"	102"
Interior Height (maximum)	79"	79"	79"	79"	79"	79"
Interior Width (maximum)	96"	96"	96"	96"	96"	96"
Fresh Water Holding Tank (gal)	100	100	100	100	100	100
Grey Water Holding Tank (gal)	58	58	58	58	58	58
Black Water Holding Tank (gal)	42	42	42	42	42	47
Appliance LPG Tank (gal) (WC) (7)	25	25	25	25	25	25
Water Heater Tank (gal)	10	10	10	10	10	10

Liquid Weight Reference: Water (gal) = (8.3 lbs/3.8 kgs) Fuel (gal) = (6.1 lbs/2.8 kgs) LPG (gal) = (4.2 lbs/1.9 kgs)

Metric Conversion: Multiply pounds x 0.453 to obtain kilograms Multiply gallons x 3.785 to obtain liters

1. GVWR (Gross Vehicle Weight Rating): Means the maximum permissible loaded weight of the motor home. The GVWR is equal to or greater than the sum of the unloaded vehicle weight plus the net carrying capacity.
 2. GAWR (Gross Axle Weight Rating): Means the maximum permissible loaded weight a specific axle is designed to carry.
 3. Base Weight: Means the estimated weight of the motor home without fuel, options, water, cargo or passengers.
 4. GCWR (Gross Combined Weight Rating): Means the value specified by the motor home manufacturer as the maximum allowable loaded weight of this motor home with its towed vehicle. Towing and braking capacities may differ. Refer to Fleetwood and chassis manufacturer manuals for complete information.
 5. Length taken from front bumper to rear bumper (excludes accessories).
 6. Excludes safety equipment and awnings.
 7. Tank Manufacturer's listed water capacity (WC). Actual LPG capacity is 80% of water listing as required by the safety code.
- * The chassis manufacturer recommends the installation of a supplemental brake control system to activate the brakes on the vehicle or trailer you are towing.

IMPORTANT — PLEASE READ: Product information, photography and illustrations included in this publication were as accurate as possible at the time of printing. For further product information and changes, please visit our website at www.fleetwoodrv.com or contact your local Fleetwood dealer. Prices, materials, design and specifications are subject to change without notice. All weights, fuel, liquid capacities and dimensions are approximate. Fleetwood has designed its recreational vehicles to provide a variety of uses for its customers. Each vehicle features optimal seating, sleeping, storage and fluid capacities. The user is responsible for selecting the proper combination of loads (i.e. occupants, equipment, fluids, cargo, etc.) to ensure that the vehicle's capacities are not exceeded.

Bounder[®]

RV OWNERCARE...

is a limited one-year/three-year or 15,000 mile warranty, whichever occurs first, and it is fully transferable for the first 12 months.



RV OWNERCARE is one of the RV industry's most comprehensive programs and includes systems, appliances, components, and construction, with no deductible and no service charge.

RV OWNERCARE coverage is provided from a company that will be around in the future to service your needs. See your nearest Fleetwood dealer for a full explanation of benefits and restrictions.

Club Fleetwood...

As a Fleetwood owner, you're eligible to become a member of our owners group, Club Fleetwood. It's a perfect way to meet other Fleetwood owners who love to travel to beautiful resorts and vacation spots all across America. Call (877) 577-2560 and join the fun!



What Drives You?

Maybe it's feeling like you're the only one on Earth. Perhaps it's the unique sense of closeness with the great outdoors. Or, it might be the joy that comes from spending quality time with family and friends.

Whatever the reason, we know that you have a strong drive to experience everything that comes with spending time on the road. And for more than 50 years, we've shared that passion with you.

Because we're RV enthusiasts ourselves, you can see our passion in the vehicles we design and build. Own a Fleetwood, and you'll feel like you're not just traveling, but embarking on an experience unlike any other.

Set your own course for adventure and get out there and explore the world around you. Once you do, you'll see what it is that drives us — it's you.



Your local Fleetwood dealer is:

www.fleetwoodrv.com Visit our website to find a dealer near you or learn more about other Fleetwood products. Or call 1-800-444-4905.



IMPORTANT—PLEASE READ: Product information, photography and illustrations included in this publication were as accurate as possible at the time of printing. For further product information and changes, please visit our website at www.fleetwoodrv.com or contact your local Fleetwood dealer. Prices, materials, design and specifications are subject to change without notice. All weights, fuel, liquid capacities and dimensions are approximate. Fleetwood has designed its recreational vehicles to provide a variety of uses for its customers. Each vehicle features optimal seating, sleeping, storage and fluid capacities. The user is responsible for selecting the proper combination of loads (i.e. occupants, equipment, fluids, cargo, etc.) to ensure that the vehicle's capacities are not exceeded.