



2004

Explore Tioga's Features and Benefits.

Side-Walls framed with 1 1/2" Aluminum Tubing — Light weight, strong and well insulated.

Outstanding Exterior Styling — Creates a very "HIGH-END" look in an entry level coach.

Flexsteel Furniture — Built by a well known, quality furniture manufacturer. With significantly more "namebrand" appeal than our competitors.

High Mounted Large Taillights — Easily visible to other motorists when towing.

Steel Powder-Coated Bumper — Attractive appearance, less likely to rust or retain odors because it's not a sewer hose receptacle.

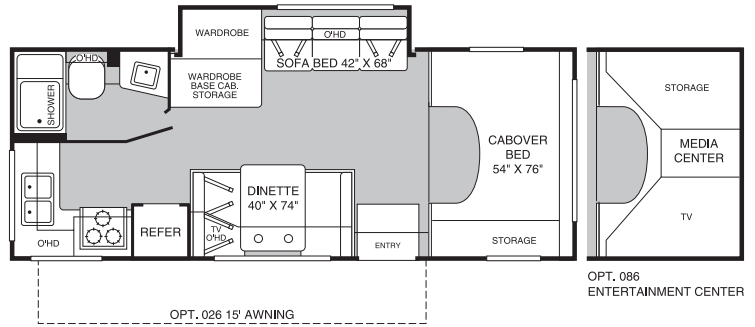
26" Radius Entry Door — Easier to load and unload coach. It just looks better!

Easy to Clean Fiber Ceiling deadens noise — Sound deadening, insulating and overall better looking than a paneled ceiling.

By Fleetwood — a name you know, a name you trust.

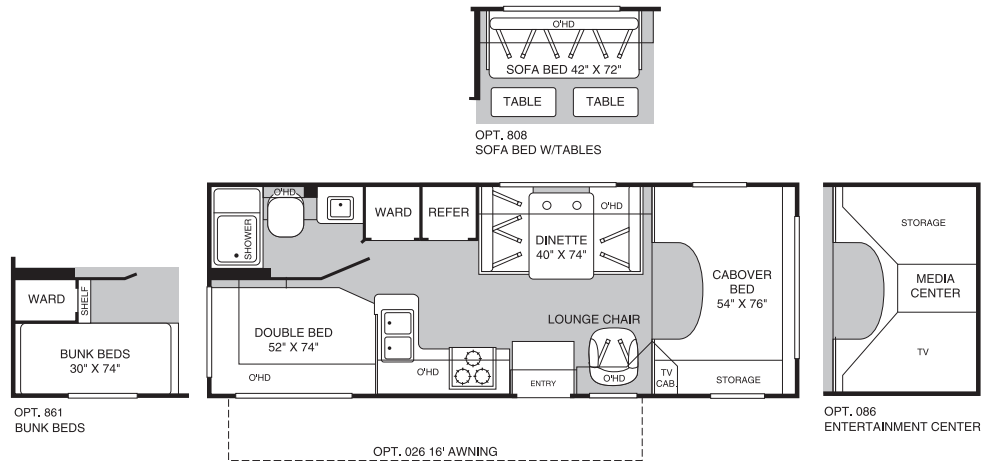
Model 23E

- Sofa Bed
- Roomy Cabover Bed
- Dinette
- Rear Kitchen
- Large Wardrobe
- Fully Enclosed Bathroom



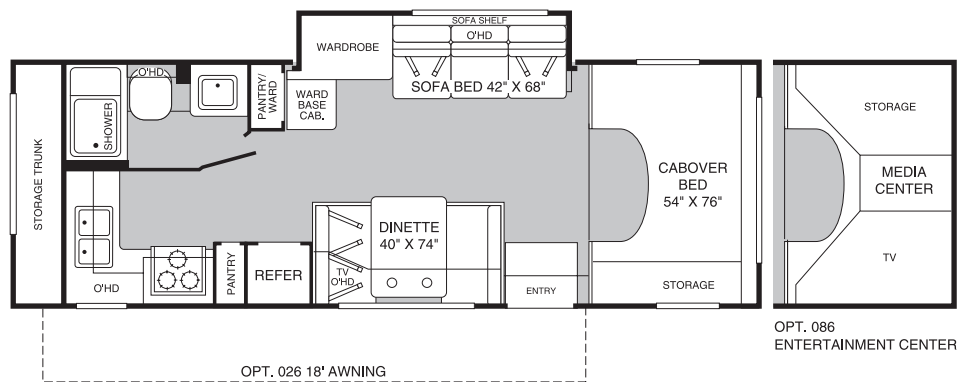
Model 24D

- Dinette
- Roomy Cabover Bed
- Lounge Chair
- Double Bed or Optional Bunk Beds
- Fully Enclosed Bathroom



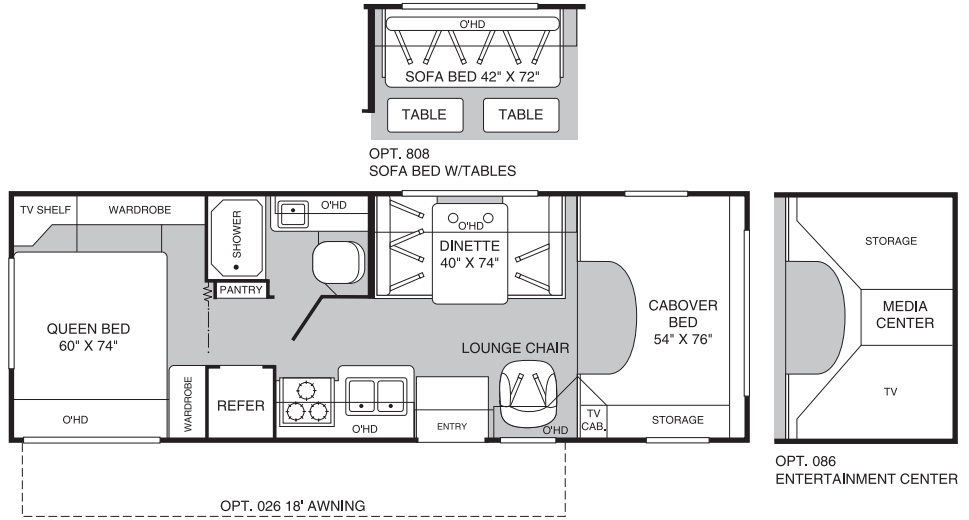
Model 26G

- Dinette
- Roomy Cabover Bed
- Sofa Bed
- Large Wardrobe and Pantry Storage
- Fully Enclosed Bathroom
- Large Rear Storage Trunk



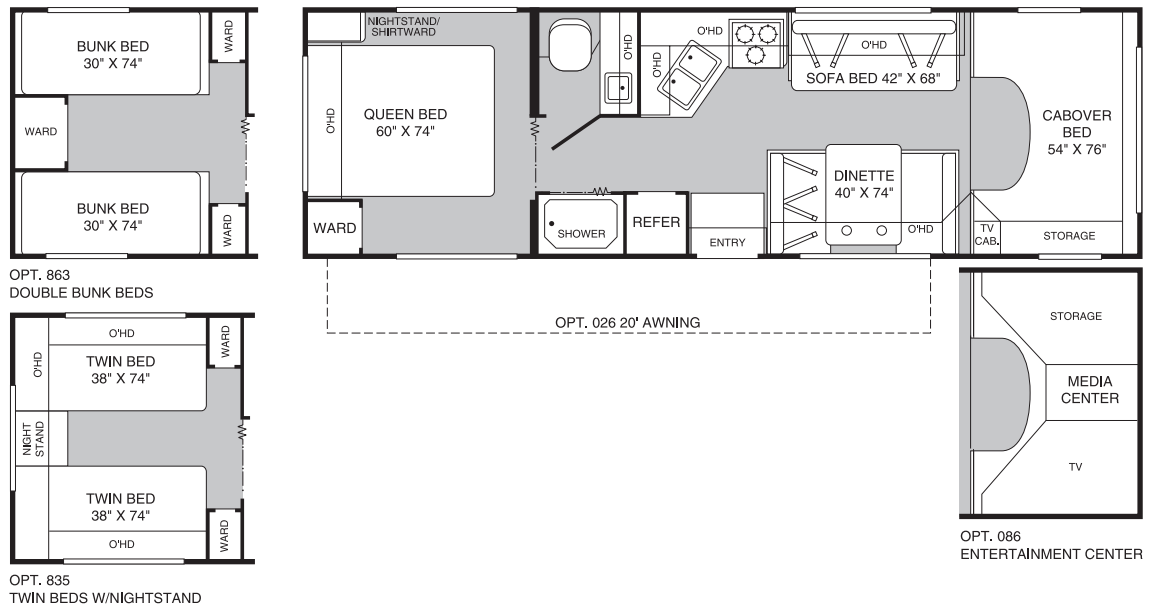
Model 26Q

- Dinette
- Roomy Cabover Bed
- Lounge Chair
- Queen Bed
- Plenty of Wardrobe Storage
- Fully Enclosed Bathroom
- Large Exterior Storage Bay



Model 29V

- Sofa Bed and Dinette
- Roomy Cabover Bed
- Split Bathroom
- Choice of 3 Bedroom Configurations



Standard Features

Exterior Automotive

- Chassis—Ford® E450, 6.8L Triton™ V10 w/305 hp, Dual Airbags, 4W Anti-Lock Brakes, Automatic 4-Speed Transmission w/Overdrive
- Trailer Hitch—Class III (5,000 lbs. Rating)
- 7-Pin Hitch Plug
- Stainless Steel Wheel Liners

Interior Automotive

- Power Windows & Door Locks
- Flexsteel® Adjustable/Reclining Bucket Seats w/Armrest (Ford)
- Chassis Supplied—Heating & Air Conditioning, Cigarette Lighter/12V Power Supply, Intermittent Windshield Wipers, Power Steering w/Tilt Wheel, Cruise Control, Sunvisors (2), Dome Light, Beverage Cup-Holders, Map Pocket
- Privacy Curtain Panel

Exterior

- High-Gloss Tuff Coat™ Smooth Fiberglass Exterior
- 1-Pc. Crowned Roof w/Tuff-Ply™ Covering
- Corrosion Resistant Aluminum Tube Hull Framing
- Vacu-bond® Hull Lamination Process
- Undercoating—Automotive Quality Undercarriage Protection
- Steel Running Boards
- Molded Rear Wheel Trim Flares
- Molded Front Transition Trim
- Molded Rear Wall/Ceiling Transition Trim
- Rear Ladder
- Breakaway Side Mirrors
- AC Duplex GFI Receptacle on Patio Side
- Windows—Radius Tinted
- Large Storage Bay—Multi-Door Compartment Access w/Smaller Storage Wells for Convenient Cargo Organization, Strut Assisted Doors (26Q Only)
- Entry Door w/Screen Door & Deadbolt Lock
- Porch Light w/Interior Switch
- Painted Skirts

Interior

- 54" X 76" Cabover Bed w/Patented Slider Bunk Operation, Privacy Curtain, Roof Vent & Sliding Side Windows
- Cabover Bunk Ladder
- Ceiling Lights w/Wall Switches at Entry & Lavy
- Day/Night Pleated Shades—Living Area
- Night Pleated Shades—Bedroom (N/A on 23E or 26G)
- Cup-holders (2) in Dinette
- Large Viewing Window in Dinette
- Carpet w/Pad & Vinyl Flooring in Galley & Lavy
- Telephone/Modem Jack w/Exterior Jack Input

Cabinetry

- Raised Panel Doors w/Hardwood Frames
- Windsor Birch Woodgrain
- Drawer Boxes—Real Wood Construction

Galley

- Sink—Residential Size Double Bowl
- Faucet—Single Lever Control
- Rangehood w/Light & Fan
- 3-Burner Range w/High-Output/Piezo Ignitor & Oven
- Microwave Oven—1.0 cu. ft. w/Touch Panel
- Refrigerator/Freezer—Dometic® 6 cu. ft.
- Flip-Top Extension (N/A on 23E or 26G)

- Kitchen Convenience Package—Spice Rack, Knife Holder, Paper Towel Holder, Sink Cover/Cutting Board, Silverware Drawer
- Decorative Wall Border

Bath

- Shower Surround/Pan—Molded ABS (26Q and 29V Only)
- Shower/Tub Surround/Pan—Molded ABS (23E, 24D and 26G Only)
- Shower Head w/Flexible Hose Extension
- Rectangular Sink w/Dual Control Faucet
- Medicine Cabinet—Wood Construction
- Mirror—Wall Mounted
- Skylight/Roof Vent w/12V Fan
- Toilet—Marine Style w/Tissue Roll Holder
- Bath Door—w/Residential Passage Lock and Towel Bars

Bedroom

- Bedspread w/Pillow Shams (N/A on 23E or 26G)
- Mattress—Innerspring (N/A on 23E or 26G)
- Double Bed (24D Only)
- Queen Bed (26Q and 29V Only)
- TV Shelf w/12V & Cable Jacks, AC Receptacle (24D, 26Q and 29V Only)
- Reading Lights—Adjustable (N/A 23E or 26G)

Furnishings

- Furniture—Quality Construction by Flexsteel®
- Sofa—Jackknife w/Armrests & Snack Tray/Convertible for Sleeping (23E, 26G and 29V Only)
- Dinette—Convertible for Sleeping
- Lounge Chair—Swivel Base w/Dual Lock Position (24D and 26Q Only)

Entertainment

- Video Ready Package—Retractable TV Antenna, Amplified Antenna Booster, Interior Jacks w/12V & Coax Cable Ports, Coax Cable, Exterior Park Cable Input Jack
- Radio (Cab)—AM/FM/CD
- 4 Speakers—(2) in Cab Doors, (2) Ceiling Mounted

Coach Support Systems

- Monitor Panel—Auxiliary & Chassis Battery Condition Check, Holding Tank Levels, Fresh Water Tank Level, LP Gas Tank Level, All Level Readings in 1/4 Increments, DSI Water Heater Switch w/Lighted Indicator, Water Pump Switch w/On Indicator Light, Battery Disconnect Switch, Generator Start/Stop Switch & Hour Meter
- Auxiliary Battery—12V (N/A on 23E or 26G)
- Auxiliary Batteries—Dual 6V Deep Cycle (23E and 26G Only)
- Battery Compartment—Molded Cross-Link Polyethylene Container & Lid Easy Access for Battery Maintenance & Electrical Components Check
- Auxiliary Start Circuit—Emergency Start Assist Switch on Dash
- Battery Disconnect—Auxiliary Battery(ies), Switch on Monitor Panel
- AC/DC Load Center w/12V Converter/Battery Charger
- Shore-Line Power Cord—30-Amp, 30' Long, Compartment Storage
- Roof Vent—Bedroom (N/A 23E or 26G)
- Air Conditioner—13,500 BTU/Ducted (23E, 24D, 26G and 26Q Models Only)
- Air Conditioner—15,000 BTU/Ducted (29V Only)
- Furnace—25,000 BTU, Auto-Ignition, Ducted, Wall Mtd. Thermostat (23E and 24D Only)

- Furnace—30,000 BTU, Auto-Ignition, Ducted, Wall Mtd. Thermostat (26Q, 26G and 29V)
- Generator—Onan® 4.0kw Microquiet
- Fresh Water Plumbing—Cross-Linked Polyethylene Tubing
- Water Heater—6 Gallon, Electronic Ignition, LP Gas
- Water Heater Bypass Valve—Fresh Water System Winterization
- Water Pump—12V, Demand Operation
- Water Pump Controller—On/Off Switches at Galley, Lavy & Optional Exterior Wash Unit
- Water Tank Drain
- City Water Hook-Up
- Sewer Hose Compartment—Located Near Holding Tank Dump Valves

Safety

- 3-Point Seat Belts—Driver and Passenger Front Seats
- Driver/Passenger Airbag Supplemental Restraint System
- Lap Belts—At Selected Living Area Seating Positions
- Smoke/Detector/Alarm
- Carbon Monoxide Detector/Alarm
- Fire Extinguisher—10 BC
- GFI Circuit Protection—Galley, Lavy, Patio Receptacles
- Entry Assist Handle

Slide-Out

- Living Room—Wardrobe/Sofa w/Debris Awning (23E and 26G Only)

* The chassis manufacturer recommends the installation of a supplemental brake control system to activate the brakes on the vehicle or trailer you are towing.

Options

Exterior Automotive

- Spare Tire

Interior Automotive

- Custom Dash Appliques

Exterior

- Power/Heated Side Mirrors
- Awning—Patio Cover
- Electric Power Entry Step
- Wash Unit—Dual Control Faucet, Shower Hose w/Flexible Hose, Water Pump On/Off Switch

Galley

- Water Filtration System

Bedroom

- Convertible Sofa w/Table (24D and 26Q Only)
- Twin Beds (29V Only)
- Bunk Beds w/Cushions (24D Only)
- Double Bunk Beds w/Cushions (29V Only)

Entertainment

- 13" Color TV w/Remote and VCP
- Entertainment System—27" Panasonic TV, Panasonic Hi-Fi VCR, Media Storage Center
- Exterior Entertainment Center—w/AM/FM/CD Player and Auxiliary Speaker, Coax Cable and 12V/110 Receptacles

Coach Support Systems

- Dual Auxiliary Batteries—Dual 6V (24D, 26Q and 29V Models Only) (Standard on 23E and 26G)
- Holding Tank Heater

Ford® Chassis	23E	24D	26G	26Q	29V
Engine Liters	6.8	6.8	6.8	6.8	6.8
Wheelbase	158"	158"	176"	176"	198"
GVWR (lbs) (1)	14,050	14,050	14,050	14,050	14,050
Front GAWR (lbs) (2)	4,600	4,600	4,600	4,600	4,600
Rear GAWR (lbs) (2)	9,450	9,450	9,450	9,450	9,450
Base Weight (lbs) (3)	9,899	9,186	10,190	9,840	10,140
GCWR (lbs) (4)	19,050	19,050	19,050	19,050	19,050
Hitch Rating Weight (lbs)*	5,000	5,000	5,000	5,000	5,000
Tongue Weight (lbs)*	500	500	500	500	500
Fuel Capacity (gal)	55	55	55	55	55

Dimensions and Capacities

Overall Length (5)	23' 10"	24' 10"	26' 10"	26' 10"	29' 10"
Overall Height (with A/C)-only if standard	10' 9"	10' 9"	10' 9"	10' 9"	10' 9"
Overall Width (maximum) (6)	102"	102"	102"	102"	102"
Interior Height (maximum)	79"	79"	79"	79"	79"
Interior Width (maximum)	96"	96"	96"	96"	96"
Fresh Water Holding Tank (gal)	35	30	35	30	30
Grey Water Holding Tank (gal)	36	36	35	34	37
Black Water Holding Tank (gal)	35	35	35	36	37
Appliance LPG Tank (gal) (WC) (7)	14	14	14	14	14
Water Heater Tank (gal)	6	6	6	6	6

Liquid Weight Reference: Water (gal) = (8.3 lbs/3.8 kgs) Fuel (gal) = (6.1 lbs/2.8 kgs) LPG (gal) = (4.2 lbs/1.9 kgs)

Metric Conversion: Multiply pounds x 0.453 to obtain kilograms Multiply gallons x 3.785 to obtain liters

1. GVWR (Gross Vehicle Weight Rating): Means the maximum permissible loaded weight of the motor home. The GVWR is equal to or greater than the sum of the unloaded vehicle weight plus the net carrying capacity.
 2. GAWR (Gross Axle Weight Rating): Means the maximum permissible loaded weight a specific axle is designed to carry.
 3. Base Weight: Means the estimated weight of the motor home without fuel, options, water, cargo or passengers.
 4. GCWR (Gross Combined Weight Rating): Means the value specified by the motor home manufacturer as the maximum allowable loaded weight of this motor home with its towed vehicle. Towing and braking capacities may differ. Refer to Fleetwood and chassis manufacturer manuals for complete information.
 5. Length taken from front bumper to rear bumper (excludes accessories).
 6. Excludes safety equipment and awnings.
 7. Tank Manufacturer's listed water capacity (WC). Actual LPG capacity is 80% of water listing as required by the safety code.
- * The chassis manufacturer recommends the installation of a supplemental brake control system to activate the brakes on the vehicle or trailer you are towing.

IMPORTANT — PLEASE READ: Product information, photography and illustrations included in this publication were as accurate as possible at the time of printing. For further product information and changes, please visit our website at www.fleetwoodrv.com or contact your local Fleetwood dealer. Prices, materials, design and specifications are subject to change without notice. All weights, fuel, liquid capacities and dimensions are approximate. Fleetwood has designed its recreational vehicles to provide a variety of uses for its customers. Each vehicle features optimal seating, sleeping, storage and fluid capacities. The user is responsible for selecting the proper combination of loads (i.e. occupants, equipment, fluids, cargo, etc.) to ensure that the vehicle's capacities are not exceeded.



RV OWNERCARE...

is a limited one-year/three-year or 15,000 mile warranty, whichever occurs first, and it is fully transferable for the first 12 months.



RV OWNERCARE is one of the RV industry's most comprehensive programs and includes systems, appliances, components, and construction, with no deductible and no service charge.

RV OWNERCARE coverage is provided from a company that will be around in the future to service your needs. See your nearest Fleetwood dealer for a full explanation of benefits and restrictions.

Club Fleetwood...

As a Fleetwood owner, you're eligible to become a member of our owners group, Club Fleetwood. It's a perfect way to meet other Fleetwood owners who love to travel to beautiful resorts and vacation spots all across America. Call (877) 577-2560 and join the fun!



What Drives You?

Maybe it's feeling like you're the only one on Earth. Perhaps it's the unique sense of closeness with the great outdoors. Or, it might be the joy that comes from spending quality time with family and friends.

Whatever the reason, we know that you have a strong drive to experience everything that comes with spending time on the road. And for more than 50 years, we've shared that passion with you.

Because we're RV enthusiasts ourselves, you can see our passion in the vehicles we design and build. Own a Fleetwood, and you'll feel like you're not just traveling, but embarking on an experience unlike any other.

Set your own course for adventure and get out there and explore the world around you. Once you do, you'll see what it is that drives us — it's you.



Your local Fleetwood dealer is:

www.fleetwoodrv.com Visit our website to find a dealer near you or learn more about other Fleetwood products. Or call 1-800-444-4905.



IMPORTANT—PLEASE READ: Product information, photography and illustrations included in this publication were as accurate as possible at the time of printing. For further product information and changes, please visit our website at www.fleetwoodrv.com or contact your local Fleetwood dealer. Prices, materials, design and specifications are subject to change without notice. All weights, fuel, liquid capacities and dimensions are approximate. Fleetwood has designed its recreational vehicles to provide a variety of uses for its customers. Each vehicle features optimal seating, sleeping, storage and fluid capacities. The user is responsible for selecting the proper combination of loads (i.e. occupants, equipment, fluids, cargo, etc.) to ensure that the vehicle's capacities are not exceeded.