

**NOT ALL MOTOR HOMES ARE CREATED EQUAL.** As you take a closer look, you'll see that there is much more to the Winnebago Voyage than a long list of standard features and compelling floorplans. Beneath it all you'll find a SuperStructure® foundation of strength and durability, and Winnebago Industries' recognized service and warranty support.



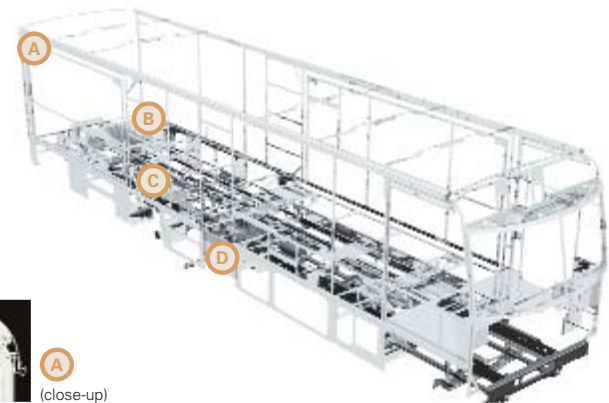
**WE ARE COMMITTED TO SERVICE.** We back our motor homes with the best after-the-sale service in the industry. This includes a 12-month/15,000-mile basic limited warranty; 36-month/36,000-mile warranty on structure; standard 10-year limited parts-and-labor roof skin warranty; and complimentary 24-hour Roadside Assistance Program. TripSaver Fast Track Parts guarantees that in-stock warranty parts ship directly to your dealer within 24 hours. Winnebago Industries has a nationwide dealer service network.



**CERTIFIED QUALITY.** Recreation Vehicle Dealer Association members annually rate RV manufacturers on the quality of their products, and on their sales and service support. Winnebago Industries has achieved the coveted Quality Circle Award every year since its inception, the only RV manufacturer to do so.



**WARNING: JOINING WIT HAS BEEN KNOWN TO CAUSE EXCESSIVE FUN.** Winnebago-Itasca Travelers (WIT) is a club for owners of Winnebago Industries motor homes. WIT is a great way to meet people and offers you caravans and rallies, local and state group activities, and other benefits for RVers.



A (close-up)

**SUPERSTRUCTURE** is the term given to Winnebago Industries' structural motor home design and construction. Rather than a single component, it is the culmination of design integration that incorporates steel and aluminum substructures; composite-design laminated floor risers; interlocking joint technology; and Thermo-Panel® floor, roof and sidewalls to form a high-strength, durable vehicle body.

Thermo-Panel manufacturing combines a durable exterior panel with welded aluminum support substructures. The substructures are embedded in a high-density, block-foam insulation core to create a strong, durable, yet lightweight sidewall. Just another Winnebago Industries' invention.

**A** Interlocking joint construction utilizes advanced extruded aluminum structural components to create integrated floor-to-sidewall and sidewall-to-roof joints. This design effectively distributes the weight of the walls and roof, making a stronger and more durable body than competitor designs that rely on screws to carry the weight.

**B** The foundation substructure assembly is precision-aligned to maximize strength and cross-coach support as well as durability.

**C** Laminated risers feature a welded aluminum core for superior strength and provide a stable base for the floor structure and storage compartments.

**D** Critical steel components are treated using an advanced electrodeposition coating process that provides superior corrosion protection.



One-year-old competitor's rubber roof



One-year-old Winnebago Industries fiberglass roof

### BUILT TO A HIGHER STANDARD.

The Voyage features a crowned, one-piece fiberglass roof skin backed with a 10-year limited parts-and-labor roof skin warranty. Fiberglass offers superior strength, attractiveness and durability compared to rubber roofs found on many competitive models. Over time, rubber roofs are susceptible to chalking, streaking and degradation, and have less puncture and tear resistance than fiberglass.



©2004 Winnebago Industries, Inc., Forest City, IA 50436. Printed in USA.

Seat belts are your most important hookup. Always buckle up.

NYSE listing: WGO

Visit us at [www.winnebagoind.com](http://www.winnebagoind.com)









38J - Oakwood with Concert Cherry

### WINNEBAGO QUALITY THROUGH AND THROUGH.

The name isn't the only thing new about the Winnebago Voyage for 2005. Packed with upscale amenities, including the BenchMark™ full comfort dinette, custom Stitchcraft furniture, double and triple slide floorplans, and a queen-size bed by Serta® this Class A motor home is made to impress. Our Smart Space™ design philosophy makes the most of interior living areas by maximizing functionality and focusing on user-friendly features. The cabinetry has a catalyzed finish for a high-end furniture look and feel, and added durability. Additional seat belts give you greater seating flexibility while traveling. With the variety of floorplans and available fabric and wood combinations to choose from, the most difficult decision regarding the Voyage won't be whether to buy, but which one to buy. Introducing the 2005 Winnebago Voyage.



## PREPARE TO BE AMAZED.

Kick back and relax in Stitchcraft premium-designed furniture, including the Rest Easy® multi-position lounge or hoop-base lounge chair. The lounge chair can be unlatched and repositioned when parked, thanks to the ample space provided by the StoreMore® slideout system.

The galley area is the perfect combination of form and function with high-quality features such as solid-surface countertops; a Moen® faucet; a Magic Chef® three-burner range with oven; a microwave; a spacious pantry; and a large, double-door refrigerator/freezer with available icemaker. Or, if you choose, upgrade to the available microwave/convection oven with range fan or four-door refrigerator/freezer with icemaker (not available on the 31W and 33V).

When it comes to entertainment options, the Voyage has plenty to choose from. Enjoy easy viewing with the 24" flat-screen TV—positioned above the driver and passenger seats—or front entertainment center with 27" flat-screen TV featured on the 38J. Available entertainment upgrades include a digital satellite dish (satellite reception requires a receiver and subscription), Home Theater Sound System with amplifier, DVD/VCR combo, receiver, five recessed speakers and a subwoofer. To make sure you can enjoy your entertainment options even without shoreline or generator power, choose the available 300-watt inverter that provides 110-volt power. No matter which options you select, every Voyage comes standard with an amplified antenna and Video Selection System.



35D - Oakwood with Washed Maple



## WHEN IT'S TIME TO RELAX, THE VOYAGE HAS YOU COVERED.

When you're ready to sit down for a meal or relax with a book, you'll appreciate the feel of the innerspring seat construction on the BenchMark full comfort dinette (not available on the 38J). The seats flip up, exposing large, easy-access storage areas. BenchMark also quickly converts into a comfortable bed. Every Voyage is outfitted with additional seat belts, providing you with greater seating flexibility while traveling. There's even an anchor for a child safety seat located in the forward-facing dinette seat.

Comfortable in any position, the Rest Easy multi-position lounge converts from a sofa, to a recliner with a pullout ottoman, to a roomy 60" x 75" bed, all at the touch of a button.

Make your bedroom more roomy with the rear slideroom and walk-around queen-size bed. You can store your belongings easily, thanks to the large wardrobe with mirrored doors and the underbed storage. Avoid trips to the Laundromat by choosing the available washer/dryer combo (not available on the 31W and 33V). Opt for the available 20" flat-face TV with remote sensor that allows you to control the front VCR/DVD components from the bedroom.



A



B



C



D



E



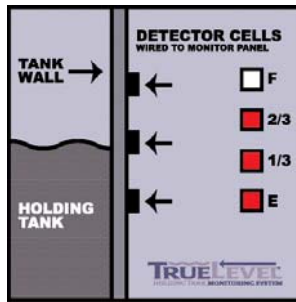
F



G



H



## IT CAN ALL BE YOURS.

A) The driver-friendly dash puts all the controls, switches and gauges front and center, and opens easily for service. The available rearview Audiovox® monitor system includes one-way audio and gives you a clear view of what's behind you. The RV Radio® features large control knobs and easy-to-operate buttons—you can even run it from the house batteries by flipping the radio power switch. For added convenience, there are two remotes—one is hand-held for use when parked and one is attached to the steering wheel for use while driving.

B) The available passenger-side workstation provides a great place to write postcards or use a laptop computer. The premium Stitchcraft driver and passenger seats recline, swivel, and feature adjustable armrests and lumbar support. (Shown in available leather.)

C) The four available two-way radios have up to a five-mile range and recharge from the coach's house batteries at their built-in charging station.

D) Tune in to a variety of listening possibilities by choosing the available Kenwood® Sirius® Satellite receiver, which includes a complimentary Sirius programming subscription with your first year of ownership. With Sirius, you get 100 channels of crystal clear programming delivered to you without signal fades.

The PowerLine® energy management system monitors onboard electrical usage to minimize the nuisance of tripped campground circuit breakers. It cycles appliances off if demand exceeds available supply and cycles them on again once the power load is reduced.

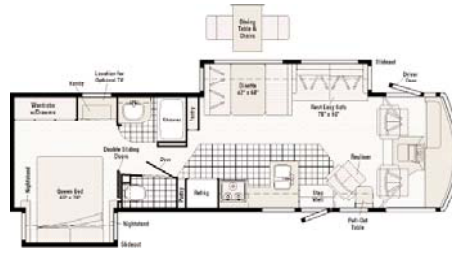
E) Enjoy the available exterior entertainment center, which includes AM/FM stereo, CD player with remote, 12-volt DC receptacle, TV jack, 110-volt outlet and speakers. The compartment locks securely.

F) With the StoreMore slideout system, exterior compartments extend along with the slideroom for easy access to stored items. Single-paddle latches and gas struts make for easy opening.

G) The QuickPort™ service connection hatch features a slot for hoses and power cords, allowing you to close the compartment door while connected to electrical and sewer hookups. Open the door and you can rinse off at the exterior wash station.

H) Winnebago Industries' exclusive TrueLevel™ holding tank monitoring system incorporates Mirus™ detector cells to ensure accurate fresh and wastewater tank level readings. Mirus detector cells produce a microelectric field that detects liquid levels from outside the tank. No more probes to corrode or clog. Just true, accurate readings time after time.

## FLOORPLANS AND EXTERIORS



Note: Dimensions shown are for sleeping space only and may vary due to styling differences. Dashed lines denote overhead storage areas.

Luxor Beige Metallic



Spruce Green Metallic



## INTERIORS



Alpine Blue



Aspen Mist



Oakwood



Concert Cherry



Portsmouth Oak



Washed Maple

### THE SAME STANDARDS INSIDE AND OUT.

We believe the same high standards we apply to construction should apply to interior design. That's why we design efficient floorplans based on customer input, why we look for durable fabrics in pleasing colors, and why we handcraft our own cabinets using traditional panel and rail construction.

# 2005 WINNEBAGO VOYAGE™ SPECIFICATIONS

	31W	33V	35A NEW	35D	36M	38J NEW
<b>Length</b>	31'6"	33'6"	35'9"	35'6"	36'5"	38'8"
<b>Exterior Height w/A/C<sup>a</sup> - F/W<sup>f</sup></b>	12'3" / 12'2"	12'1" / 12'2"	12'2" / 12'2"	12'2" / 12'1"	12'1" / 12'0" / 12'1" / 12'1"	12'1"
<b>Exterior Width<sup>b</sup></b>	8'6"	8'6"	8'6"	8'6"	8'6"	8'6"
<b>Exterior Storage<sup>f</sup> - F/W (cu. ft.)<sup>c</sup></b>	74.9	82.0	90.4	90.4	120.6	90.4
<b>Interior Height</b>	6'8"	6'8"	6'8"	6'8"	6'8"	6'8"
<b>Interior Width</b>	8'5"	8'5"	8'5"	8'5"	8'5"	8'5"
<b>Fresh Water Capacity w/Heater<sup>d</sup> (gal.)</b>	82	86	87	86	79	88
<b>Hold Tank Capacity - Black/Gray<sup>d</sup> (gal.)</b>	45 / 50	55 / 44	55 / 75	55 / 44	41 / 61	51 / 54
<b>LP Capacity<sup>e</sup> (gal.)</b>	23	28	28	28	28	28
<b>Fuel Capacity (gal.)</b>	75	75	75	75	75	75
<b>GCWR (lbs.)</b>	26,000 <sup>■</sup> / 26,000 <sup>□</sup>	26,000 <sup>■</sup> / 26,000 <sup>□</sup>	26,000 <sup>△</sup> / 30,000 <sup>○</sup>	26,000 <sup>■</sup> / 26,000 <sup>□</sup>	26,000 <sup>■</sup> / 26,000 <sup>●</sup> / 26,000 <sup>□</sup> / 26,000 <sup>△</sup>	30,000 <sup>○</sup>
<b>GVWR (lbs.)</b>	20,500 <sup>■</sup> / 20,700 <sup>□</sup>	20,500 <sup>■</sup> / 20,700 <sup>□</sup>	22,000 <sup>△</sup> / 24,000 <sup>○</sup>	20,500 <sup>■</sup> / 20,700 <sup>□</sup>	20,500 <sup>■</sup> / 22,000 <sup>●</sup> / 20,700 <sup>□</sup> / 22,000 <sup>△</sup>	24,000 <sup>○</sup>
<b>GAWR - Front (lbs.)</b>	7,000 <sup>■</sup> / 7,500 <sup>□</sup>	7,000 <sup>■</sup> / 7,500 <sup>□</sup>	8,500 <sup>△</sup> / 9,000 <sup>○</sup>	7,000 <sup>■</sup> / 7,500 <sup>□</sup>	7,000 <sup>■</sup> / 7,500 <sup>●</sup> / 7,500 <sup>□</sup> / 8,500 <sup>△</sup>	9,000 <sup>○</sup>
<b>GAWR - Rear (lbs.)</b>	13,500 <sup>■</sup> / 13,500 <sup>□</sup>	13,500 <sup>■</sup> / 13,500 <sup>□</sup>	15,000 <sup>△</sup> / 15,500 <sup>○</sup>	13,500 <sup>■</sup> / 13,500 <sup>□</sup>	13,500 <sup>■</sup> / 14,500 <sup>●</sup> / 13,500 <sup>□</sup> / 15,000 <sup>△</sup>	15,500 <sup>○</sup>
<b>Wheelbase</b>	190"	208"	228"	220"	228"	248"

F = Ford\* W = Workhorse\* ■ = Chassis A ● = Chassis B □ = Chassis C ○ = Chassis D △ = Chassis E

Standard - S Optional - O

	31W	33V	35A	35D	36M	38J
<b>AUTOMOTIVE</b>						
<b>Chassis A</b> - Ford 6.8L SOHC Triton® V10 310-hp, 4-speed overdrive transmission, 4-wheel ABS, 130-amp. alternator, <b>Tires</b> 19.5"	S	S		S	S	
<b>Chassis B</b> - Ford 6.8L SOHC Triton V10 310-hp, 4-speed overdrive transmission, 4-wheel ABS, 130-amp. alternator, <b>Tires</b> 19.5"					O	
<b>Chassis C</b> - Workhorse 8.1L Vortec V8 340-hp, Allison® LCT 1000 5-speed overdrive transmission, 4-wheel ABS, 145-amp. alternator, <b>Tires</b> 19.5"	O	O		O	O	
<b>Chassis D</b> - Workhorse 8.1L Vortec V8 340-hp, Allison LCT 1000 5-speed overdrive transmission, 4-wheel ABS, 145-amp. alternator, <b>Tires</b> 22.5"			O			S
<b>Chassis E</b> - Workhorse 8.1L Vortec V8 340-hp, Allison LCT 1000 5-speed overdrive transmission, 4-wheel ABS, 145-amp. alternator, <b>Tires</b> 22.5"			S		O	
<b>Tire Tools</b> wrench, leverage bar, <b>Trailer Hitch</b> <sup>9</sup> 5,000-lbs. drawbar/500-lbs. maximum vertical tongue weight & wiring, <b>Wheel Liners</b> stainless steel	S	S	S	S	S	S
<b>Leveling Jacks</b> (front & rear) Kwikee® hydraulic, manual touch pad, indicator light, <b>Tire spare</b> (19.5" tires only)	S	S	S	S	S	
<b>Leveling Jacks</b> (front & rear) HWH® manual touch pad, chime						S

## CAB AREA & DRIVER CONVENIENCES

<b>Cab Seats</b> lumbar support, w/3-point adjustable seat belts, armrests, multi-adjustable swivel/slide/recline, fabric, <b>Cigarette Lighter/12-Volt DC Powerpoint, Convenience Tray, Cruise Control, Door</b> (driver) entry, assist bar, courtesy light, TriMark® KeyOne™ system, <b>Floor Mats</b> carpet, driver & passenger, <b>Map Lights (2)</b> individual driver & passenger, <b>Steering Wheel</b> tilt w/power assist, <b>Sunvisors (2), Trim Panels</b> driver & passenger sides (12-volt DC powerpoint passenger side), <b>Window</b> (driver) power, <b>Window</b> (passenger) full-slider w/screen, <b>Windshield Wipers</b> intermittent.	S	S	S	S	S	S
<b>Cab Seats</b> leather insert w/vinyl surround, <b>Cab Seat Pedestal</b> 6-way power assist (driver), <b>Defroster Fans (2)</b> auxiliary 2-speed w/instrument panel switch, <b>GPS Navigation System, Monitor System</b> rearview, B/W, w/single camera & 1-way audio, Audiovox, <b>Workstation</b> in-dash, passenger	O	O	O	O	O	O

## ENTERTAINMENT

<b>AM/FM (Cab)</b> AM/FM/stereo cassette/CD player w/remote controls & weather band, roof-mounted flexible rubber antenna, speakers (4), <b>Radio Power Switch</b> main/auxiliary battery, <b>Satellite System Ready, Telephone</b> input & interior jack, <b>TV Enhancement Package</b> antenna (amplified), 12-volt DC powerpoint, interior jack(s), coax wiring, cable input, antenna check reminder light, TV shelf, <b>Video Selection System</b>	S	S	S	S	S	S
<b>TV 24"</b> flat-screen color AC stereo w/remote, RCA <sup>8</sup>	S	S	S	S	S	
<b>Entertainment Center TV 27"</b> flat-screen color AC stereo w/remote						S
<b>CB Prep</b> antenna, antenna lead, 12-volt DC powerpoint	O	O	O	O	O	O

	31W	33V	35A	35D	36M	38J
<b>CD Player</b> compact multi-disc changer	O	O	O	O	O	O
<b>Entertainment Center (Exterior)</b> DC receptacle, AC duplex receptacle, AM/FM radio w/CD player & remote, TV jack, radio antenna, speakers (2), lockable compartment, removable table, <b>Home Theater Sound System</b> <sup>h</sup> amplifier, DVD/VCR combo, receiver, speakers (5), subwoofer, RCA	O	O	O	O	O	O
<b>Radios (4)</b> 2-way, docking port w/charger	O	O	O	O	O	O
<b>Satellite Dish Antenna</b> Winegard® RV digital, elevation sensing unit, manual	O	O	O	O	O	O
<b>Satellite Dish Antenna</b> Winegard, RV digital, elevation sensing unit, power	O	O	O	O	O	O
<b>Satellite Radio</b> Sirius (includes one-year, pre-paid subscription)	O	O	O	O	O	O
<b>TV 20"</b> color AC stereo w/remote, flat-face, remote extenders, bedroom, RCA	O	O	O	O	O	O
<b>DVD/VCR Stereo Combo</b> w/remote	O	O	O	O	O	O

## INTERIOR

<b>Ceiling</b> fabric, <b>Clock, Cupholder(s), Curtain</b> front wraparound w/track, <b>Light</b> decorative, <b>Lights</b> ceiling, incandescent w/wall switches, <b>Lights</b> fluorescent, recessed, galley, lounge w/wall switches, <b>Lights</b> reading, <b>Picture(s), Shades</b> day/night pleated (lounge, dinette, bedroom), mini blinds (galley), <b>Wainscoting</b> w/chair rail (33V and 35A)	S	S	S	S	S	S
<b>Mirror</b> w/frame		S		S		
<b>Windows</b> dual-glazed/thermo-insulated	O	O	O	O	O	O

## CABINETRY

<b>Portsmouth Oak</b> stile-and-rail construction w/raised-panel inserts on upper doors	O	O	O	O	O	O
<b>Concert Cherry</b> stile-and-rail construction w/raised-panel inserts on upper doors, <b>Washed Maple</b> stile-and-rail construction w/raised-panel inserts on upper doors						

## COUNTERTOPS

<b>Solid-Surface</b> galley	S	S	S	S	S	S
-----------------------------	---	---	---	---	---	---

## FLOORCOVERING

<b>Carpeting</b> w/pad, <b>Vinyl</b> bath, galley	S	S	S	S	S	S
---	---	---	---	---	---	---

## FURNITURE

<b>BenchMark® Dinette</b> w/access to storage below, child seat tether anchor	S	S	S	S	S	
<b>Bar Seat Multi-Position Lounge (Stitchcraft)</b> , power recliner w/throw pillow		S	S	S	S	S
<b>Sofa (Stitchcraft)</b> w/throw pillow	S					
<b>Lounge Chair</b> hoop-base, rocker/recliner, footrest, magazine rack			S		S	
<b>Lounge Chair</b> hoop-base rocker/recliner, cabinet w/table, footrest & magazine rack	O	S		S		
<b>Lounge Chair</b> hoop-base rocker/recliner w/footrest						S
<b>Dining Table</b> w/extendable pull-up leaf & chairs (2) free-standing & (2) folding		O	O	O	O	S

# 2005 WINNEBAGO VOYAGE™ SPECIFICATIONS

Standard - S	Optional - O	31W	33V	35A	35D	36M	38J
<b>GALLEY</b>							
<b>Faucet</b> single-control, <b>Microwave Oven</b> w/range fan, Sharp® <b>Range</b> 3-burner w/oven, Magic Chef, <b>Range Cover</b> , <b>Refrigerator/Freezer</b> large double-door, <b>Receptacle</b> duplex (2), <b>Roof Vent</b> non-powered, <b>Sink</b> double-bowl molded w/sink cover, <b>Wastepaper Basket</b> , <b>Water Purification System</b> cold water only	S	S	S	S	S	S	S
<b>Appliance Storage Cabinet</b>			S				
<b>Countertop</b> flip-up extension		S	S	S	S	S	S
<b>Galley Rail</b>	S	S		S	S		
<b>Light</b> decorative dining light		S	S	S	S	S	S
<b>Magazine Rack</b>							S
<b>Microwave/Convection Oven</b> w/range fan, Sharp, <b>Range Top</b> 3-burner w/storage below, Magic Chef, <b>Refrigerator/Freezer</b> large double-door w/ice maker, <b>Roof Vent</b> powered ventilator fan	O	O	O	O	O	O	O
<b>Pantry</b> slideout			S		S	S	S
<b>Pantry</b> (2) slideout		S		S			
<b>Pantry</b> (1) w/adjustable shelves, (1) w/slideout	S						
<b>Refrigerator/Freezer</b> h 4-door w/ice maker				O	O	O	O
<b>Storage Cabinet</b>				S	S		
<b>Table</b> pull-out, adjustable shelf			S				
<b>Wall Border</b>	S	S		S	S	S	S
<b>BATH</b>							
<b>Cabinet</b> lavatory, <b>Cabinet</b> medicine, <b>Faucet</b> (shower) single-control w/Moen Posi-Temp® and fixed showerhead, <b>Faucet</b> (lavatory) dual-control, <b>Light</b> shower, <b>Lights</b> makeup, <b>Roof Vent</b> powered, <b>Shower</b> w/wall surround, <b>Shower Door</b> textured glass, <b>Shower Skylight</b> , <b>Sink</b> oval, <b>Tissue Holder</b> , <b>Toilet</b> porcelain, w/foot-pedal flush & sprayer, <b>Towel Rack</b> 3-rod, mounted to door, <b>Towel Ring(s)</b>	S	S	S	S	S	S	S
<b>Cabinet</b> linen	S						
<b>Clothes Rod</b> removable, located in shower	S	S		S			
<b>Faucet</b> (shower) hand-held shower head	O						
<b>Magazine Rack</b>	S						
<b>Mirror</b>	S			S			
<b>Shower Package</b> hand-held shower head w/water shut-off valve and fold-down shower seat		O	O	O	O	O	O
<b>Storage Cabinet</b> private toilet room				S			
<b>Wall Border</b> private toilet area		S	S	S			S
<b>BED ROOM</b>							
<b>Bed</b> queen, innerspring Serta mattress, bedlift gas springs w/underbed storage, <b>Bedsprad</b> pillow shams, pillows, <b>Lights</b> decorative wall lamps, <b>Nightstand(s)</b> , <b>Wall Border</b> , <b>Wardrobe Cabinet</b> carpeted floor, clothes rod, drawers, light, mirrored/wood doors	S	S	S	S	S	S	S
<b>Headboard</b>	S	S		S	S		
<b>Mirror</b> wood framed, back wall	S	S	S				S
<b>Roof Vent</b> non-powered	S						
<b>Vanity Cabinet/Desk</b> w/stool	S	S			S		
<b>EXTERIOR</b>							
<b>Awning Rails</b> w/rain gutters, <b>Door</b> entrance w/separate screen door, deadbolt lock, <b>Graphics Packages</b> Spruce Green Metallic or Luxor Beige Metallic, <b>Ladder</b> , <b>Light</b> porch w/interior switch, <b>Light</b> service, driver side, <b>Mirrors</b> electric remote w/defrost, <b>Mudflaps</b> rear (2), front (2), <b>Receptacle</b> AC duplex, <b>Sidewall Skin</b> one-piece, smooth fiberglass, <b>Storage Compartments</b> valance panels, trunk liner, gas cylinders, TriMark KeyOne system, paddle latch, lights	S	S	S	S	S	S	S
<b>Entrance Door Steps</b> double, electric w/doorjamb switch	S	S		S	S		

- a The height of each model is measured to the top of the tallest standard feature and is based on the curb weight of a typically equipped unit. The actual height of your vehicle may vary by several inches depending on chassis or equipment variations. Please check with your dealer for further information.
- b Voyage floorplans feature a wide-body design—over 96" in making your purchase decision, you should be aware that some states restrict access on some or all state roads to 96" in body width. Before making your purchase decision, you should confirm the road usage laws in the states of interest to you.
- c The load capacity of your motor home is designated by weight, not by volume, so you cannot necessarily use all available space when loading your motor home.
- d Capacities are based on measurements prior to tank installation. Slight capacity variations can result due to installation applications.
- e Capacities shown are tank manufacturer's listed water capacity (W.C.). Actual filled LP capacity is 80% of listing due to overfilling prevention device on tank.

	31W	33V	35A	35D	36M	38J
<b>Entrance Door Steps</b> triple, electric w/doorjamb switch			S			S
<b>Awning</b> h patio	O	O		O	O	
<b>Awning</b> h patio, electric w/wind sensor & remote	O	O	S	O	O	S
<b>Undercoating</b> Workhorse	O	O	O	O	O	O
<b>SYSTEMS</b>						
<b>Automotive Heater/Air Conditioner, Auxiliary Start Circuit, Batteries (Coach) (2)</b> deep cycle, <b>Battery (Coach)</b> disconnect system, <b>Battery Charge Control</b> automatic dual, <b>Drain</b> 1" water tank, <b>Electrical Distribution System</b> AC & DC breaker panels, 45-amp. converter/charger (55-amp. 38J), <b>Generator Prep</b> gas line, 12-volt wiring, <b>Generator/Shoreline, Automatic Changeover Switch, Monitor Panel</b> wall-mounted, battery condition gauge, generator hourmeter gauge, generator start/stop switch, holding tank levels, LP tank level, water heater switch & lights, water pump switch, water tank level, <b>Service Center (Drainage/Water)</b> city water hookup/tank diverter fill, drainage valves, exterior wash station w/pump switch, <b>QuickPort</b> service connection hatch, sewer hose 10', <b>Service Center (Electrical)</b> cable input, portable satellite dish hookup, 30-amp. power cord, <b>QuickPort</b> service connection hatch, <b>Tank</b> flushing system, black tank only, <b>Tank</b> holding, heated compartment, <b>Tank LP</b> , permanent mount w/gauge, <b>TRUE LEVEL</b> holding tank monitoring system, <b>Water Heater</b> 6-gallon electronic ignition w/motoraid & auto heater, <b>Water Pump</b> demand, <b>Water System Winterizing Package</b> , bypass valve, water heater siphon tube, <b>Water Tank Fill</b> gravity w/lockable door (NA 38J)	S	S	S	S	S	S
<b>Air Conditioner (Roof)</b> 14,800 BTU	S					
<b>Air Conditioner (Roof)</b> 14,800 BTU, heat pump	O					
<b>Air Conditioners (Roof) (2)</b> h high-efficiency w/energy management system, ceiling distribution		S	S	S	S	S
<b>Air Conditioners (Roof) (2)</b> h high-efficiency w/energy management system, ceiling distribution, heat pump, <b>Generator</b> h 7,000-watt, Onan® Marquis Gold™ gas, <b>Inverter</b> h DC/AC, 300-watt, <b>Solar Panel</b> 10-watt w/battery charger, <b>Water Heater</b> 6-gallon electronic ignition, 110 vac/LP gas w/motoraid & auto heater	O	O	O	O	O	O
<b>Furnace</b> 35,000 BTU, low-profile	S	S				
<b>Furnace</b> 40,000 BTU, low-profile			S	S	S	S
<b>Generator</b> h 4,000-watt, Onan MicroQuiet™ gas	S					
<b>Generator</b> h 5,500-watt, Onan Marquis Gold, gas	O	S	S	S	S	S
<b>Power Cord</b> 50-amp.		O	O	O	O	O
<b>Washer/Dryer Combination</b> (requires 10-gallon water heater)		O	O	O	O	O
<b>Washer/Dryer Prep</b>		S	S	S	S	S
<b>Water Heater</b> 10-gallon electronic ignition, 120 vac/LP gas w/motoraid & auto heater		O	O	O	O	O
<b>SLIDEOUT</b>						
<b>Slideout Room</b> bed	S	S	S	S	S	S
<b>Slideout Room</b> galley, w/slideroom cover		S				
<b>Slideout Room</b> TV/dining table, w/slideroom cover, <a href="#">STORE MORE</a>						S
<b>Slideout Room</b> sofa/dinette, w/slideroom cover, <a href="#">STORE MORE</a>		S	S	S	S	
<b>Slideout Room</b> dinette/galley, w/slideroom cover, <a href="#">STORE MORE</a>	S					
<b>Slideout Room</b> lounge/galley, w/slideroom cover, <a href="#">STORE MORE</a>						S
<b>SAFETY</b>						
<b>Assist Bar</b> interior, <b>Assist Handle</b> exterior, <b>Bumpers</b> front & rear, <b>Child Seat</b> tether anchor, <b>Detectors/Alarms</b> LP leak, smoke, carbon monoxide, <b>Fire Extinguisher</b> 10 B.C., <b>Ground Fault Interrupter</b> , <b>Light</b> center high-mount brake lamp, <b>Light</b> courtesy w/wall switch, <b>Lights</b> daytime running lamps, <b>Window</b> escape, <b>Windshield</b> laminated safety glass	S	S	S	S	S	S
<b>WARRANTY</b> i						
<b>12-month/15,000-mile basic limited warranty, 36-month/36,000-mile warranty on structure, 10-year limited parts &amp; labor warranty on roof skin</b>	S	S	S	S	S	S

- f Measurements are based on the most recent information available. See your dealer for specifications.
- g Actual towing capacity is dependent on your particular loading and towing circumstances, which includes the GVWR, GAWR and GCWR, as well as adequate trailer brakes. Please refer to the Operator's Manual of your vehicle for further towing information.
- h Not all items available in combination. See dealer for details.
- i See separate chassis warranty details provided in owner's manual.
- j See your dealer for complete warranty information.
- Winnebago Industries' continuing program of product improvement makes specifications, equipment, model availability and prices subject to change without notice. Comparisons to other motor homes are based on the most recent information available.