

**FLEETWOOD**  
*Driven to Explore*

SOUTHWIND-Floor Plans, Standard Features and Options

# Southwind

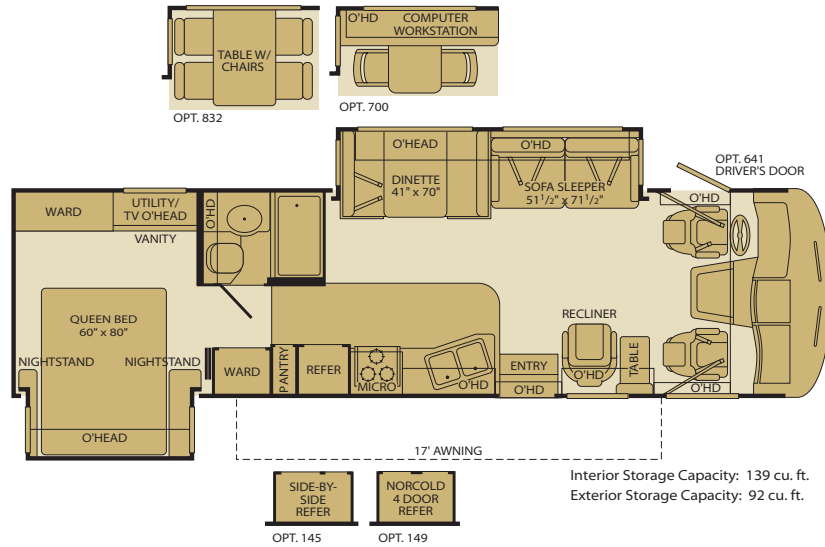


SOUTHWIND-Class A Gas-2006

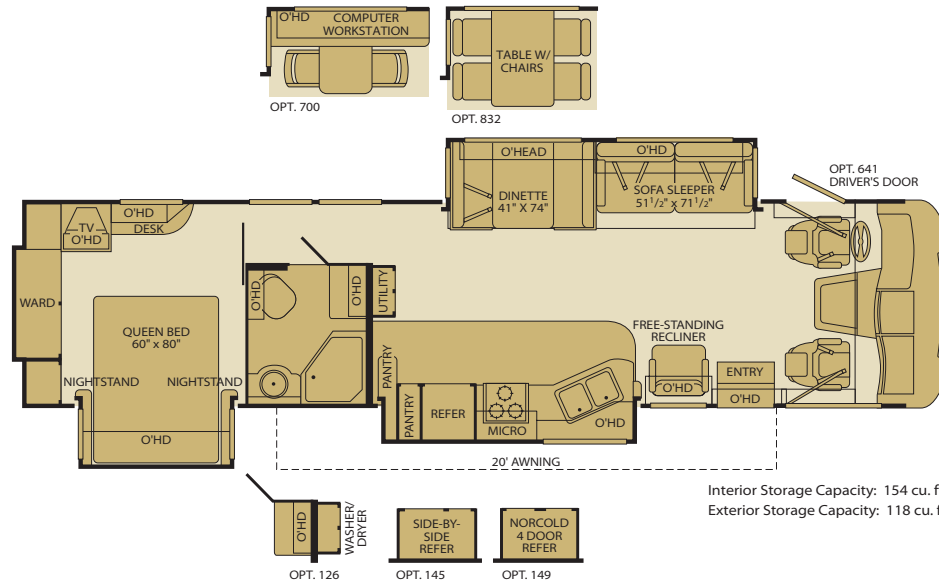


# Floor Plans

**32VS**  
 Double Slide-Out  
 Sleeping Accommodations: 5\*



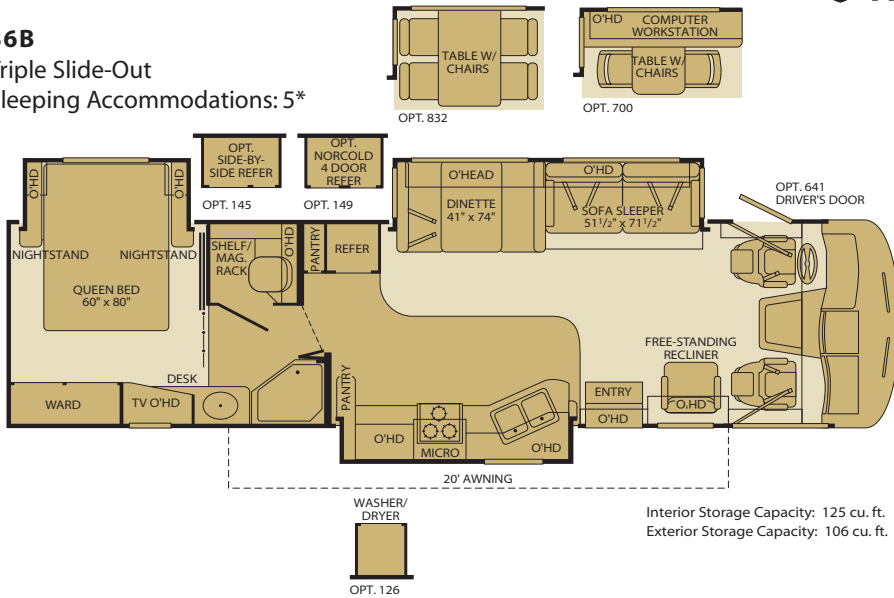
**37C**  
 Triple Slide-Out  
 Sleeping Accommodations: 5\*



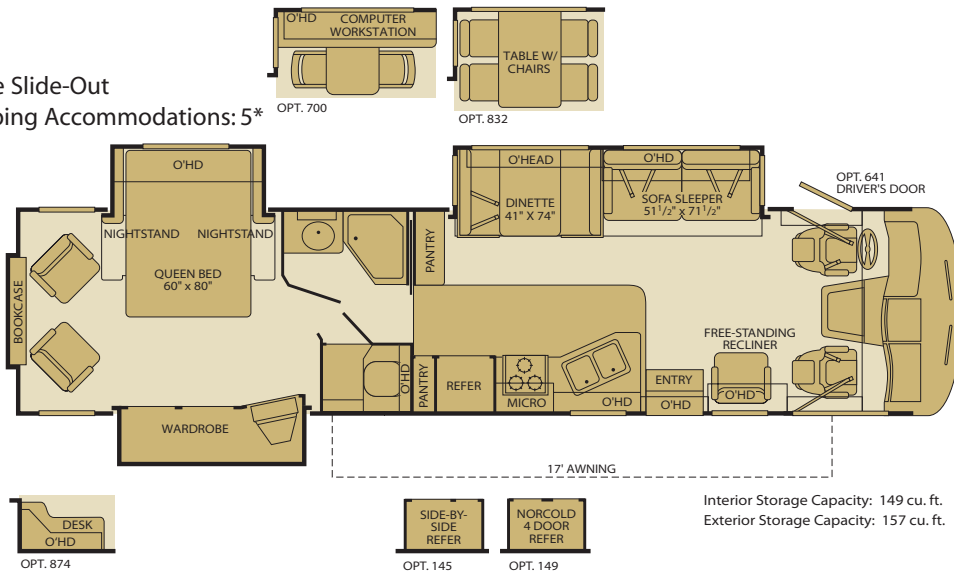
\*Sleeping accommodations are based on designed sleeping areas and may be greater than Sleeping Capacity Weight Rating (SCWR) found on the Cargo Carrying Capacity label located in each RV. Sleeping accommodations are based on standard layout. Optional furniture may increase or decrease sleeping accommodations.



**36B**  
Triple Slide-Out  
Sleeping Accommodations: 5\*



**37L**  
Triple Slide-Out  
Sleeping Accommodations: 5\*



Setting the Standard in Motor Home Quality.

**Fleetwood® prototypes are exposed to thousands of miles of durability testing. Those components that don't survive are redesigned until they do.** This sets our standard in safety and durability.

**Royal Tuff-Ply roofing technology is one of the most durable roofing materials on the market and also reflects sunlight to reduce chalking.** White roof material minimizes heat build-up, keeping the temperature cool and comfortable.

**Reliable TuffPEX® plumbing runs throughout each vehicle creating a durable seal on all internal tubing. TuffPEX® assures water flow and functions in colder temperatures.** The TuffPEX® system is an industry leader in quality plumbing.

**For each outer wall, Fleetwood uses one seamless, solid piece of its exclusive Tuff-Coat® fiberglass composite. It resists UV rays, cracks and impacts.** Our products look newer longer and that's a big plus at resale time.

**To assure a strong, weather-resistant structure, Fleetwood Vacu-bonds® all sidewalls, floors and ceilings to a durable aluminum or steel frame.** The Vacu-bond® process is unmatched by many competitors.

**Fleetwood's patented Power Platform supports the body with a rigid frame that reinforces the chassis to make it even stronger.** This allows Fleetwood to offer triple slide-outs.

**Fleetwood's sinks and shelves are designed to handle full-size kitchenware.** Few competitors can say the same.

*Seatbelt configuration may vary depending on options chosen.*

# Standard Features

## Interior

### THROUGHOUT

- **84" Interior Ceiling Height**
- **Deluxe Roller Bearing, Full Extension Drawer Guides**
- **Dual Roof A/C High Efficiency w/Solar Panel and Chill Grills**
- **Whole Coach Water Filtration System**
- 10-Gallon, Quick-Recovery Water Heater w/Direct Spark Ignition (Gas/Electric)

- 3 Interior Decors
- Beveled Mirrors
- Cherry Wood Grain or Maple Wood Grain
- Decor Lighting
- Demand Water Pump w/Filtration
- Dual 6V/Deep-Cycle House Batteries
- Fluorescent Ceiling Lights w/Dual Bulbs

- Incandescent Lighting
- Telephone Jack in Dash
- Wall Switches
- Wall-to-Wall Nylon Carpet w/Carpet Pad
- Water Heater Bypass
- Wood Drawers
- Woven Jacquard Feature Fabrics

### DRIVER CONVENIENCE

- **Driver/Front Passenger Ultraleather™ Captain's Chairs w/Reclining Back/Slide Controls w/Power Driver Seat**
- **DSS Manual Lift Satellite Dish**
- 3-Point Seat Belts at Driver & Front Passenger Seats

- AM/FM/CD Radio, Satellite Ready
- Auto A/C Heater Combo
- Auxiliary Start Circuit
- Battery Disconnect System
- Computer Workstation in Dash
- Cruise Control
- Dash Fans

- Double-Swivel Sun Visors w/Map Pockets
- Engine Cover Convenience Tray
- Intermittent Wiper Control
- Low Profile Engine Cover
- Radio Switch-Main/Auxiliary Power
- Tilt Steering Wheel

### LIVING ROOM

- **27" Flat Screen TV in Overhead**

- Day/Night Pleated Shades
- Free-Standing Lounge Recliner

- Hi-Fi VCR
- Residential Seat Styling

### GALLEY

- **1.4 cu. ft. Microwave Oven w/Electronic Touch Pad, Built-in Rangehood & Light**
- **8 cu. ft. Dometic® Double-Door Refrigerator**
- **Double Stainless Steel Sink**
- 3-Burner, High-Output Range w/Oven

- Adjustable Cabinet Shelves (Select Cabinets)
- Brushed Nickel Finish Cabinet Hardware
- Fan-Tastic® Power Roof Vent
- Radius Corner Cabinetry
- Range Cover-Flush Mount
- Single-Lever Faucet

- Sink Cover/Cutting Board
- Skylight
- Slide-Out Dinette Bins w/Latches
- Solid Divider Doors
- Solid Surface Countertops
- Wastebasket

### BEDROOM

- **20" Flat Screen TV**
- **Restonic® Deluxe Pillow Top Innerspring Mattress**
- Bedspread w/Decor Pillows

- Day/Night Pleated Shades
- Headboard
- Rear Speakers
- Second Phone Jack

- TV Cabinet
- Wardrobe Lighting

### BATHROOM

- **Fan-Tastic® Power Roof Vent**
- **Molded Tub/Shower Enclosure**
- Brushed Nickel Bath Accessories

- Make-Up Lights
- Porcelain Toilet w/Water Saver
- Skylight in Tub/Shower

- Toilet Tank San-T-Flush™ System
- Vinyl Flooring

### SAFETY/CONVENIENCE

- 10 ABC Fire Extinguisher
- Carbon Monoxide Detector/Alarm

- Entry Assist Handle
- Propane Detector/Alarm

- Smoke Detector/Alarm

## Fleetwood Advantages

- **Complete TuffPEX® Plumbing System**
- **Royal Tuff-Ply UV-Resistant Heat/Cold Insulated Roofing Technology**
- **Vacu-Bond® Upper/Lower Floors**
- **Vacu-Bond® Walls w/Smooth High Gloss Exterior Tuff-Coat® Fiberglass**

## Fleetwood Exclusive

- **Power Platform Construction**

\* Bold Denotes Fleetwood's Key Features

## Exterior

### THROUGHOUT

- **Awning Rail/Drip Molding (Both Sides)**
- **Heated Water & Holding Tank Compartments**
- 120V/12V AC/DC Converter Central Electrical Panel
- 3 Colorway Graphics to Match Decor
- 3-Way Water Pump Switch
- 5.5kW Onan® Generator

- 50-Amp Service
- Dual Pane Windows w/Screens
- Dual Patio Receptacles
- Fiberglass Front/Rear Cap
- Halogen Headlights
- Large, Curved Aerodynamic Windshield
- Molded Front Quarter Panels
- Mud Flaps
- Park Cable Receptacle

- Patio Awning
- Single Motor Windshield Wipers w/Wet Arm
- Slide Topper Awnings
- Stainless Steel Mesh Front Grille
- Stainless Steel Wheel Simulators
- Steel Outriggers
- TV Antenna w/Signal Booster

### AUTOMOTIVE

- **4-Point Automatic Leveling Jacks**
- Trailer Hitch with 7-Point Electrical Hook-Up†

†The chassis manufacturer recommends the installation of a supplemental brake control system to activate the brakes on the vehicle or trailer you are towing. Hitch receiver ratings expressed are maximum for the hitch receiver installed and may require the purchase of additional equipment that is dependant on the weight of the towed load. Consult with hitch receiver manufacturer for further information.

### SAFETY/CONVENIENCE

- **Rear Vision Camera w/One-Way Sound**
- Entry Door w/Screen Door & Deadbolt Lock
- Exterior Assist Handle

- Heated Remote Rear View Mirrors
- Porch Light (Doorside)
- Power Entry Step
- Roof Ladder
- Swing-Up Engine Access Door

- Underhood Utility Lights
- Utility Compartment w/Exterior Shower

### STORAGE

- **Rotomolded Polyethylene Luggage Compartments**
- Continuous One-Piece Compartment Bulb Seal

- Gas-Lift Strut Supports
- Insulated Aluminum Luggage Doors w/Single Paddle Metal Latches & Stainless Steel Hinges

- Lighted Luggage Compartments
- Steel Luggage Door Seal Frames

### BODY STRUCTURE

- **Basement Floor Configuration**
- **Vacu-bond® Walls w/Smooth, High-Gloss Exterior Fiberglass**

- Aluminum Interlocking Floor/Wall/Ceiling Framing
- Royal Tuff-Ply Radius Roof w/Ducted A/C

- Steel Surface on Bulkhead
- Vacu-bond® Upper/Lower Floors

## Options

### DRIVER CONVENIENCE

- Auto Locating Satellite Dish
- CB Radio Ready
- Driver's Door w/Manual Crank Window Lift
- Sirius® Satellite Radio

### LIVING ROOM

- DVD Home Theater Sound System
- Ultraleather™ Furniture Package

### THROUGHOUT (EXTERIOR)

- CSA Package
- Dual A/C w/Heat Pump w/Solar Panel On Front A/C
- Electric Awning-Weather Pro (32VS & 37L)
- Full-Body Paint 3 Colors

### GALLEY

- 12 cu. ft. Side-by-Side Dometic® Refrigerator w/Ice Maker
- 8 cu. ft. Dometic® Stainless Steel Double Door Refrigerator w/Ice Maker
- Convection Microwave Oven
- Dinette Table with Free-Standing Chairs
- Dinette/Computer Workstation
- Norcold® 4-Door Refrigerator w/Ice Maker
- Washer/Dryer (Select Models)

### AUTOMOTIVE

- Ford® Chassis 6.8L Triton® V10 Engine
- Workhorse™ Chassis 8.1L Vortec™ Engine

### BEDROOM

- Accessory Package (Hair Dryer, Vacuum & Flashlight)
- Torque Windows
- Queen Bed Air Mattress

## Weights and Measurements

| FORD® /WORKHORSE™ CHASSIS                    | 32VS          | 36B           | 37C           | 37L           |
|--|---------------|---------------|---------------|---------------|
| <b>Engine Displacement (Liters)</b>          | 6.8/8.1       | 6.8/8.1       | 6.8/8.1       | 6.8/8.1       |
| <b>Wheelbase (Inches)</b>                    | 208/208       | 228/228       | 242/242       | 242/242       |
| <b>GVWR (lbs)<sup>1</sup></b>                | 20,500/20,700 | 22,000/22,000 | 22,000/22,000 | 22,000/22,000 |
| <b>Front GAWR (lbs)<sup>2</sup></b>          | 7,000/7,500   | 7,500/8,000   | 7,500/8,000   | 7,500/8,000   |
| <b>Rear GAWR (lbs)<sup>2</sup></b>           | 13,500/13,500 | 14,500/14,500 | 14,500/14,500 | 14,500/14,500 |
| <b>Base Weight (lbs)<sup>3</sup></b>         | 16,960/17,590 | 19,040/19,280 | 19,020/19,220 | 19,230/19,420 |
| <b>GCWR (lbs)<sup>4</sup></b>                | 25,500/25,700 | 26,000/26,000 | 26,000/26,000 | 26,000/26,000 |
| <b>Hitch Rating Weight (lbs)<sup>†</sup></b> | 5,000/5,000   | 5,000/5,000   | 5,000/5,000   | 5,000/5,000   |
| <b>Tongue Weight (lbs)<sup>†</sup></b>       | 500/500       | 500/500       | 500/500       | 500/500       |
| <b>Fuel Capacity (gal)</b>                   | 75/75         | 75/75         | 75/75         | 75/75         |

| DIMENSIONS AND CAPACITIES                            |        |        |        |        |
|--|--------|--------|--------|--------|
| <b>Overall Length<sup>5</sup></b>                    | 33' 2" | 36' 2" | 37' 8" | 38' 2" |
| <b>Overall Height (with A/C)</b>                     | 12' 7" | 12' 7" | 12' 7" | 12' 7" |
| <b>Overall Width (maximum)<sup>6,7</sup></b>         | 102"   | 102"   | 102"   | 102"   |
| <b>Interior Height (maximum)</b>                     | 84"    | 84"    | 84"    | 84"    |
| <b>Interior Width (maximum)</b>                      | 96"    | 96"    | 96"    | 96"    |
| <b>Fresh Water Holding Tank (gal)</b>                | 80     | 80     | 80     | 80     |
| <b>Grey Water Holding Tank (gal)</b>                 | 58     | 58     | 58     | 58     |
| <b>Black Water Holding Tank (gal)</b>                | 42     | 42     | 42     | 42     |
| <b>Appliance Propane Tank (gal) (WC)<sup>8</sup></b> | 25     | 25     | 25     | 25     |
| <b>Water Heater Tank (gal)</b>                       | 10     | 10     | 10     | 10     |

**Liquid Weight Reference:** Water (gal) = (8.3 lbs/3.8 kgs) Fuel (gal) = (6.1 lbs/2.8 kgs) Propane (gal) = (4.2 lbs/1.9 kgs)

**Metric Conversion:** Multiply pounds x 0.453 to obtain kilograms. Multiply gallons x 3.785 to obtain liters.

### CHASSIS

|  |  |
|--|--|
| <b>Model:</b> Ford®/Workhorse™                               | <b>Alternator Amps:</b> 130 Amp/145 Amp  |
| <b>Engine:</b> 6.8L Triton® V10/8.1L Vortec™ V8              | <b>Horsepower:</b> 362 HP @ 4750 RPM/340 HP @ 4200 RPM   |
| <b>Torque:</b> 457 lb-ft @ 3250 RPM/<br>455 lb-ft @ 3200 RPM | <b>Transmission:</b> TorqShift™ 5-Speed Automatic Overdrive w/Tow/Haul<br>Mode/6-Speed Automatic with Overdrive – Allison® 1000 Series |

- GVWR (Gross Vehicle Weight Rating) is the maximum permissible weight of this fully loaded motor home. The GVWR is equal to or greater than the sum of the unloaded vehicle weight plus the cargo carrying capacity.
  - GAWR (Gross Axle Weight Rating) is the maximum permissible loaded weight a specific axle is designed to carry.
  - Base Weight is the estimated weight of the motor home without fuel, options, water, cargo or passengers.
  - GCWR (Gross Combined Weight Rating) is the value specified by the motor home manufacturer as the maximum allowable loaded weight of this motor home with its towed vehicle. Towing and braking capacities may be different. Refer to Fleetwood and chassis manufacturer's manuals for complete information.
  - Length taken from front bumper to rear bumper (excludes accessories).
  - Excludes safety equipment and awnings.
  - Motor homes feature a body-width over 96" which will restrict your access to certain roads. Before purchasing, you should research any state and/or province road laws which may affect your usage.
  - Tank manufacturer's listed water capacity (WC). Actual propane capacity is 80% of water listing as required by the safety code.
- † The chassis manufacturer recommends the installation of a supplemental brake control system to activate the brakes on the vehicle or trailer you are towing. Hitch receiver ratings expressed are maximum for the hitch receiver installed and may require the purchase of additional equipment that is dependant on the weight of the towed load. Consult with hitch receiver manufacturer for further information.

**IMPORTANT — PLEASE READ:** Product information, photography and illustrations included in this publication were as accurate as possible at the time of printing. For further product information and changes, please visit our website at [www.fleetwoodrv.com](http://www.fleetwoodrv.com) or contact your local Fleetwood dealer. Prices, materials, design and specifications are subject to change without notice. All weights, fuel, liquid capacities and dimensions are approximate. Fleetwood has designed its recreational vehicles to provide a variety of uses for its customers. Each vehicle features optimal seating, sleeping, storage and fluid capacities. The user is responsible for selecting the proper combination of loads (i.e. occupants, equipment, fluids, cargo, etc.) to ensure that the vehicle's capacities are not exceeded.

## What Drives You?

Maybe it's feeling like you're the only one on Earth. Perhaps it's the unique sense of closeness with the great outdoors. Or, it might be the joy that comes from spending quality time with family and friends. Whatever the reason, we know that you have a strong drive to experience everything that comes with spending time on the road. And for more than 50 years, we've shared that passion with you. Because we're RV enthusiasts ourselves, you can see our passion in the vehicles we design and build. Own a Fleetwood, and you'll feel like you're not just traveling, but embarking on an experience unlike any other. Set your own course for adventure and get out there and explore the world around you. Once you do, you'll see what it is that drives us — it's you.

**RV OWNERCARE\*** is a limited one-year/15,000-mile coach warranty and three-year/50,000-mile structural warranty, whichever occurs first, and it is fully transferable for the first 12 months. RV OWNERCARE is one of the RV industry's most comprehensive programs and includes systems, appliances, components and construction, with no deductible and no service charge. RV OWNERCARE coverage is provided from a company that will be around in the future to service your needs. See your nearest Fleetwood dealer for a full explanation of benefits and restrictions.

**FLEETWOOD TRAVELCADE CLUB** As a Fleetwood owner, you're eligible to become a member of our owners' group, Fleetwood Travelcade Club. It's a perfect way to meet other Fleetwood owners who love to travel across America and share in the RV lifestyle. Call (877) 577-2560 or visit [www.fleetwood.com/clubs](http://www.fleetwood.com/clubs) to learn more and join the fun!

**FLEETWOODRV.COM** To locate a dealer near you, visit our website or call 1-800-444-4905. We can also be contacted at Fleetwood Customer Relations, P.O. Box 7638, Riverside, CA 92513-7638.

**IMPORTANT—PLEASE READ** Product information, photography and illustrations included in this publication were as accurate as possible at the time of printing. For further product information and changes, please visit our website at [www.fleetwoodrv.com](http://www.fleetwoodrv.com) or contact your local Fleetwood dealer. Prices, materials, design and specifications are subject to change without notice. All weights, fuel, liquid capacities and dimensions are approximate. Fleetwood has designed its recreational vehicles to provide a variety of uses for customers. Each vehicle features optimal seating, sleeping, storage and fluid capacities. The user is responsible for selecting the proper combination of loads (i.e.: occupants, equipment, fluids, cargo, etc.) to ensure that the vehicle's capacities are not exceeded.

Your local Fleetwood dealer is:



[www.fleetwoodrv.com](http://www.fleetwoodrv.com)

\*For complete info see your Fleetwood dealer. ©2005. Fleetwood Enterprises, Inc. Printed in the USA. Inventory control number SW06F2 10/05.

