

FEATURES & SPECIFICATIONS

2 0 0 7
Allure 400
Series



COUNTRY COACH

THE WORLD'S FINEST MOTORCOACHES

Allure 400 Series

Introducing the Allure 400 Series for 2007. Created by Country Coach, manufacturers of The World's Finest Motorcoaches, the 400 Series boasts an impressive list of features, all crafted with the attention to detail found only at Country Coach. Experience the stunning interior and exterior styling, single-piece windsbiel, tall (85" high) interior ceilings, Yamaha® home theater system with XM radio, DVD player, and 6.1 surround sound, available quad slide floorplans, a new stainless steel-faced, heated plumbing bay, and the many features and amenities that have made the Allure a Country Coach favorite for a decade.

Allure 430

A quintessential expression of Country Coach luxury, the 430 showcases the passion for excellence that has always been an Allure trademark. Boasting a 40' tag axle floorplan, the 430's exterior and interior are artistic compositions with you in mind.

Allure 470

Upgrade to the 470, and enjoy such standard features as a concealable color rear-view monitor with AM/FM/XM stereo and compact disc controls, including remote 12 disc CD changer and two speakers; a standard dining area wall cabinet a wall-mounted dining table with adjustable forward and rearward motion; 37', 40' and 42' quad slide floorplans and much more, not to mention the impressive options list.

430
470

Chassis Specifications

- ● **DynoMax® chassis:** Semi-monocoque construction of 8" x 3" x 1/4" tube with welded components
 - 10,000 lb. Class III receiver hitch with electrical connector and chrome cover
 - 2-year/unlimited mile chassis warranty
- x ● **37' tag axle chassis:**
 - GVWR: — 45,200 lbs.
 - GCWR: — 55,200 lbs.
- ● **40' tag axle chassis:**
 - GVWR: — 45,200 lbs.
 - GCWR: — 55,200 lbs.
- x ● **42' tag axle chassis:**
 - GVWR: — 45,200 lbs.
 - GCWR: — 55,200 lbs.
- x **Wheelbase:** 40' — 243"
- x ● **Wheelbase:** 37' — 219"; 40' — 243"; 42' — 279"

430
470

- ● **Engine:** Caterpillar® C9 8.8L 400HP with 1100 ft-lbs torque at 1400 RPM
 - Exhaust brake
 - Electronic Control Module (ECM) for engine diagnostics
 - Alternator: 160 amps
 - 120-volt, 1,000 watt engine block heater
 - Sight glass for coolant tank
 - 5-year/6,000-operating hours engine warranty
- ○ **Engine:** Cummins® ISL 400HP with 1200 ft-lbs torque at 1300 RPM
 - Jacobs® two-stage engine compression brake
 - Electronic Control Module (ECM) for engine diagnostics
 - Alternator: 160 amps
 - Sight glass for coolant tank
 - 5-year/100,000-miles engine warranty

430
470

- ● **Transmission:** Allison 3000 MH with PTO
 - 6-speed automatic with two overdrive gears
 - Keypad electronic shifter with digital display
 - 5-year/unlimited-mile transmission warranty (with TranSynd™ fluid)
- ● **Driveline:** Dana Spicer® SPL 170 series
- ● **Suspension:**
 - **Front** — Holland/Neway® independent front suspension with double-wishbone construction and full air-suspension system, air drum brakes, IPD anti-sway bar, and Koni Frequency Selective Damping (FSD) shock absorbers
 - **Rear** — Ridewell drive/tag combination air-suspension system with air springs and Koni FSD shock absorbers
- ● **Drive axle:** ArvinMeritor® with 4.88 differential ratio
- ● **Steering:** Fully-integral, full-time hydraulic power steering gear with tilt telescoping column
- ● **Electronic cruise control**
- ● **Teleflex adjustable electronic throttle and brake pedal**
- ● **Service brakes:** Full air brakes with ABS and automatic slack adjusters
 - 16.5" x 5" front axle
 - 16.5" x 7" drive axle
 - 16.5" x 7" tag axle
 - Automatic Traction Control
- ● **Tires:** Steel-belted radials 295/80R x 22.5"

430
470

- ● **Wheels:**
 - **Front** — Two 8.25" x 22.5" aluminum-alloy wheels
 - **Drive** — Two 8.25" x 22.5" aluminum-alloy wheels and two 8.25" x 22.5" inner dual steel wheels
 - **Tag** — Two 8.25" x 22.5" aluminum-alloy wheels
- ● **Battery:** Two group 31 engine cranking batteries for engine
- ● **Fuel capacity:** 135 gallons (dual fuel fills, driver and passenger sides)
- ● **Service center:** Diagnostic reader ports, circuit breakers and chassis battery disconnect
- ● **Engine light with remote reel**

Construction Highlights

- ● **Tube-steel cage structure**
- ● **Vacuum-bonded walls and floor with 1-1/2" expanded polystyrene insulation**
- ● **R16-value roof insulation**
- ● **Fiberglass exterior with aluminum skirts and insulated compartment doors**
- ● **1-piece molded fiberglass roofcap**
- ● **Exterior riding height: 12' 10" (including roof air) (height varies with satellite option)**
- ● **Finished interior height: 85"**
- ● **Exterior width: 102"**
- ● **Interior width: 96-1/2"**
- ● **Sound and vibration dampening material under floor deck**
- ● **Laminated composite floor (two forward slides)**
- ● **Steel-framed slide rooms with sloped fiberglass roof for water drainage**

Driver Compartment Amenities

- ● 6-way power-adjustable driver and passenger seats with 3-point restraint and adjustable arms
- x ● Driver sliding seat cushion and passenger power footrest
- x Massage/heated driver and passenger seats with adjustable headrests, driver sliding seat cushion and passenger power footrest
- ● Custom contoured dash and overhead
- ● **Teleflex gauges include:** speedometer, tachometer, air pressure, oil pressure, transmission temperature, volt meter, water temperature, fuel level, odometer, and trip odometer
- ● Wrap-around one-piece windshield with shade band
- ● Two 12-volt dash overhead mounted 2-speed fans
- ● 18" SmartWheel® multiplexed steering wheel wrapped in leather. Equipped with controls for horn, head light flash, marker light flash, cruise functions, wiper functions, and high beam light
- x ○ Massage/heated driver and passenger seats with adjustable headrests
- ● Burl wood dash panels
- x ● Compass with exterior temperature indicator
- x In-dash radio and CD player
- x Color rear-view monitor
- x ● Concealable color rear-view monitor with AM/FM/XM stereo and compact disc controls, including remote 12 disc CD changer and two speakers
- ● XM ready satellite radio (customer applies for service)

- x ○ SilverLeaf® VMS 240 EL digital engine monitor/travel information center with auto generator start and auto temperature
- x SilverLeaf VMS 240 EL travel information center with auto generator, auto temperature, concealable color back-up monitor
- ● Dual map lights
- ● Electronic power sun visors
- ○ GPS navigation system with voice command
- ● Heating/cooling/defrost unit in dash
- ● Manual driver-side window visor
- ● Privacy drapes
- ● Passenger-side control panels with step slide cover, porch light, ceiling lights, entry step, and domestic battery disconnect switches with battery switch indicator lamp
- ● Radial single-motor windshield wipers with delay and washers
- ● Side view mirror power controls
- ● Interior entry door assist grip
- ● Cup holders
- ● Tile entry landing
- ● Tiled driver's floor area
- ○ Tile pattern upgrade

Front Entertainment

- ● 32" LCD high definition TV in overhead dash
- ○ 37" LCD high definition TV in overhead dash
- ● Yamaha® home theater system with XM radio, DVD player, and 6.1 surround sound with subwoofer located in lower galley cabinet
- ○ TiVo® system
- ○ VCR (replaces TiVo® system)
- ○ TracStar® in-motion high definition TV satellite system and receiver in living room and bedroom

● Standard ○ Optional x Not Available

- ● Pre-wired for satellite dish
- ○ Universal RF remote (pre-programmed)
- ○ Additional universal remote

General Conveniences

- ● Custom-crafted cabinetry and woodwork
- ● Light oak cabinetry
- ● Medium oak cabinetry
- ○ Light cherry cabinetry
- ○ Medium cherry cabinetry
- ○ Maple cabinetry
- ○ Walnut cabinetry
- ○ Hickory cabinetry
- ● Stained, lacquered cabinetry
- ● Burglar alarm (inside/outside protection) with key fob controlled keyless entry
- ● Electric bay door locks
- ● Carbon monoxide detector
- x LP gas detector
- x ● LP gas detector with auto shut-off
- ● Smoke detector
- ● Decorative window boxes in living room, dining area, and bedroom with wood sill (pleated day/night black-out shades in living area)
- ● Fire extinguisher
- ● Halogen lighting throughout
- ○ Elliptical ceiling light fixtures with etching
- x ● Glassware cabinet
- x ○ Storage cabinet with stained glass door (replaces glassware cabinet)
- ● Padded vinyl ceiling
- ● Power step-slide cover
- ● Stepwell light
- ● Telephone jacks
- ● Intellitec multiplex zoned-switching system with light dimming feature

● Standard ○ Optional x Not Available

- ● Wall sconce lighting in living room with dimmers
- ● Sofabed
- ● Hide-away bed on driver side
- x ● Air mattress in hide-away bed
- ○ Hide-away bed on passenger side
- ● Euro design recliner with ottoman (triple slide A, C, D only)
- ● Occasional table
- ○ Air mattress in hide-away bed
- ○ Computer table with charging center (replaces occasional table)
- ○ J sofa
- ● Designer interior packages, choice of:
 - Calypso
 - Marrakesh
 - Petra
 - Portico
- ○ Custom interior décor kit (preset)
- ○ Sculpted carpet in living room
- ○ Tile living room floor (not available under forward roadside slide)
- ○ Radiant floor heating in living room (available only with tile living room floor)
- ○ Radiant floor heating (galley and bath)
- ○ Washer/dryer combo (Series 2000 Splendide)
- ○ Stacked washer and dryer (40' Hood River and 42' Siskiyou Summit only)
- ● Emergency Roadside Service (first year paid by Country Coach)
- ○ Factory delivery

Galley Amenities

- ● Polished solid-surface countertops with edge detail
 - Solid-surface splashguard located at forward end of countertop
 - Full tile backsplash

430
470

- ● Large, recessed, double stainless steel sink with solid-surface covers and single-lever faucet with pull-out sprayer
- ○ Single-bowl solid-surface galley sink
- ● 12 cu ft Norcold® 4-door 2-way refrigerator with icemaker
- ○ 12 cu ft Norcold 4-door, 2-way refrigerator with ice maker and water dispenser
- x ○ Amana® 22 cu ft two door side-by-side electric refrigerator/freezer with raised panel inserts on doors, with AGM batteries, 200 amp alternator and 3000 watt Xantrex® RS3000 inverter (42' only)
- ● Recessed 3-burner electronic-ignition gas cooktop with solid-surface cover and sealed burners (storage for cover)
- ● Microwave convection oven with power hood
- ○ Drop-in 3-burner gas cooktop with gas oven
- ○ Advantium® Speedcook microwave convection oven
- ○ Stainless steel appliance package (refrigerator door and Advantium® oven)
- x ● Dining area wall cabinet and wall-mounted dining table
 - adjustable forward and rearward motion
 - four chairs (includes two folding)
- ● Wall-mounted café dinette
- ● Café dinette sleeper
- x Dining area wall cabinets and wall-mounted dining table
 - adjustable forward and rearward motion
 - two chairs
- ● Two folding dinette chairs

430
470

- x Fan-Tastic® fan with rain sensor, automatic vent, remote switch and double dome
- x ● Fan-Tastic thermostatically-controlled, variable-speed fan with rain sensor, insulated cover, and dome stop switch
- ● Tile flooring on main floor, carpet in slide rooms
- ● Wood window box with mini blinds

Bath Amenities

- ● Decorative vanity bar light
- ● Thetford Tecma china toilet
- x ○ Tub/shower combination (floorplan dependent)
- ● Etched glass shower enclosure with coordinating finish
- ● Lighted shower
- ● Handheld pressure-balanced shower unit
- x Fan-Tastic® fan with rain sensor, automatic vent, remote switch and double dome
- x ● Fan-Tastic thermostatically-controlled, variable-speed fan with rain sensor, insulated cover and dome stop switch
- ● Water pump switch
- ● Hardwood pocket privacy doors
- ● Insulated skylight
- ● Porcelain vanity sink with coordinating fixtures
- ● Full tile backsplash
- ● Polished solid-surface countertop with edge detail
- ○ Solid-surface vanity sink(s)
- ● Tile flooring
- ● Mini-blinds with fabric valance on bath window
- ● Large vanity overhead with mirrored doors

430
470

Bedroom Amenities

- ● 26" LCD high definition TV in bedroom
- ○ 32" LCD high definition TV in bedroom
- ● LG DTV418 mini home theatre system with 5.1 surround sound, includes five ceiling speakers and subwoofer
- ● Bedroom dresser cabinet
- ○ Max storage in bedroom
- ● Bedspread with custom accessory pillows
- ● Fabric-wrapped window boxes with wood sill (pleated day/night black-out shades)
- ● Telephone jack
- ● Queen-size 60"x77" bed with upholstered headboard
- x ○ King-size 72"x77" bed (Siskiyou Summit only)
- ○ Air mattress in bedroom
- ● Two polished solid-surface nightstands
- ● Wall sconce lighting with dimmer
- ● Wardrobe with lighting and cedar panel on wardrobe shelf
- ○ Built-in fire-resistant safe with combination lock

Heating and Cooling Systems

- ● Hydro-Hot™ diesel-fired hydronic central heating system (50,000 BTU) with zone control
- x ● Driver compartment area over-the-road heating/cooling/defrost system with dual zone, single blower, and driver controls (40,000 BTU heating, 17,000 BTU cooling)
- ● Temperature control center for hydronic system and roof air conditioners
- ● Two 15,000 BTU low-profile roof air conditioners with heat pumps, remote condensation pump, and drain lines

430
470

- x ○ Third roof air conditioner with heat pumps (comes with upgrade to Onan® 10 kW generator)
- x ○ Third roof air conditioner with heat pumps (comes with upgrade to Power Tech 10kW generator)

Power Sources

- ● Onan 8.0 kW "quiet" liquid-cooled diesel generator with remote start/stop
- ● 12-volt battery boost system
- ● 2000-watt solid-state inverter and 100-amp solid state converter/charger with 15-amp chassis battery-charge system
- ● 50-amp shore service surge protector
- x 50-amp shore service with cord and 30-amp adapter with manual reel
- x ● 50-amp shore service with cord and 30-amp adapter with power reel
- ● Automatic low-voltage generator start
- ● Digital power package (battery monitoring system)
- ● Two 8D domestic deep cycle batteries with 12-volt interior disconnect switch
- x ○ Two 8D AGM house batteries

Plumbing Features

- ● **Stainless steel-faced, heated plumbing bay includes:**
 - Retractable, cold water hand-held spray fixture
 - City water-to-water tank fill
 - Dump valves
 - Hot and cold faucet
 - Soap dispenser
 - Four LED lights
 - Lighted logo
 - Cable and phone outlets
- ● 12-volt on-demand water pump
- ● Black-water and gray-water tank flush system
- ● Sewer-hose, hose adaptor and storage for both

430
470

- ● Tank-monitoring system and monitor panel with water pump switch
- ● Water pump switches located in galley, bath entry and at each vanity
- ● Low-point drain valve for fresh-water plumbing
- ● Hydro-Hot™ hydronic water heating system with electric back-up
- ● Pre-plumbed and pre-wired for washer/dryer
- ● Water filtration system
- ○ RV Sani-Con® tank drain system

Tank Capacities

- ● 95 gallon fresh-water tank
- ● 45 gallon black-water storage tank
- ● 65 gallon gray-water storage tank
- x ● 19 gallon LP tank
- x 39 gallon LP tank
- ● 135 gallon diesel fuel tank

Exterior Conveniences

- ● 120-volt receptacle, coaxial cable, and telephone jack (storage bay)
- ● Bronze tone, reflective, dual-pane insulated windows
- ● Chip-guard paint-protection coating on wheel well flare
- ● Clear-coat exterior
- ● Exterior graphic package (four different color themes)
- ● Chrome air horns
- ● Compressed-air supply hook-up in steering bay
- ● Electric entry doorstep with automatic override at ignition
- ● Fog lights
- ● Four curb lights

430
470

Full awning packages:

- Carefree® LTD window awnings
- Carefree Summit slide cover over all slide rooms
- Carefree Eclipse XL electric patio awning with 9' extension
- Carefree Freedom III (starts with 31458) electric awning over entry door
- Carefree pull rod
- ○ Girard® electric patio box awning and door awning with wind sensor
- ● Full rear mud flap with stainless steel trim
- ● HWH® 4-point CAN automatic air-leveling system
- ● Large halogen headlights
- ● Lighted entry door assist grip
- ● Lighted, pass-through exterior storage bays with carpeted liners and insulated doors
- ● Patio light
- ● Polished stainless steel exhaust pipe tips for generator, hydronics, and engine
- ● Powder-coated steel frame structure entry door with auto-hold, deadbolt, key fob keyless entry, and screen door
- ● Telephone and cable TV hook-up in plumbing bay
- ● Thermostatically-heated, remote control chrome driver compartment mirrors with turn signals and adjustable arms
- ● Trailer hitch receiver with wiring and chrome cover
- ● Power-adjustable TV antenna with coaxial cable and 12-volt boost
- ● Undercoating
- ○ Bay entertainment center with 32" LCD high definition TV
- ○ 3M nose protectant

430
470

- ○ Ladder with universal assist ladder extension
- ○ Single-directional, half-bay roll-out storage tray(s)
- ○ Dual-directional, full-bay roll-out storage tray(s)
- x SmarTire® II tire monitoring system (requires travel information center)
- x ○ SmarTire® II tire monitoring system (requires travel information center)
- ○ Sunscreen windshield cover

Slide-Out Room Special Features

- x ● Bedroom (DS): HWH® single cylinder slide room-extension mechanism
- x Bedroom (DS): Power Gear® slide room-extension mechanism
- ● Bedroom (PS): HWH lateral-arm slide room-extension mechanism
- x ● Curbside: HWH X-slide room-extension mechanism
- x Curbside: Power Gear slide room-extension mechanism
- ● Roadside: Power Gear flush-floor room-extension mechanism
- ● Fiberglass vacuum-laminated exterior slide room wall
- ● Push-button slide-activation control panels
- ● Slide-out room topper awning
- ● Emergency hand-operated winch for HWH® slide rooms

Options Summary

- x Massage/heated driver and passenger seats with adjustable headrests, driver sliding seat cushion and passenger power footrest
- ○ J sofa
- x ○ SmarTire® II tire monitoring system (requires travel information center)
- ○ Additional universal remote

430
470

- ○ **Engine:** Cummins® ISL 400HP with 1200 ft-lbs torque at 1300 RPM
- Jacobs® two-stage engine compression brake
- Electronic Control Module (ECM) for engine diagnostics
- Alternator: 160 amps
- Sight glass for coolant tank
- 5-year/100,000-miles engine warranty
- x ○ Massage/heated driver and passenger seats with adjustable headrests
- x SilverLeaf VMS 240 EL travel information center with auto generator, auto temperature, concealable color back-up monitor
- x ○ SilverLeaf® VMS 240 EL digital engine monitor/travel information center with auto generator start and auto temperature
- ○ GPS navigation system with voice command
- ○ Tile pattern upgrade
- ○ 37" LCD high definition TV in overhead dash
- ○ TiVo® system
- ○ VCR (replaces TiVo® system)
- ○ TracStar® in-motion high definition TV satellite system and receiver in living room and bedroom
- ○ Universal RF remote (pre-programmed)
- ○ Light cherry cabinetry
- ○ Medium cherry cabinetry
- ○ Maple cabinetry
- ○ Walnut cabinetry
- ○ Hickory cabinetry
- ○ Elliptical ceiling light fixtures with etching
- x ○ Storage cabinet with stained glass door (replaces glassware cabinet)
- ● Air mattress in hide-away bed
- ○ Hide-away bed on passenger-side

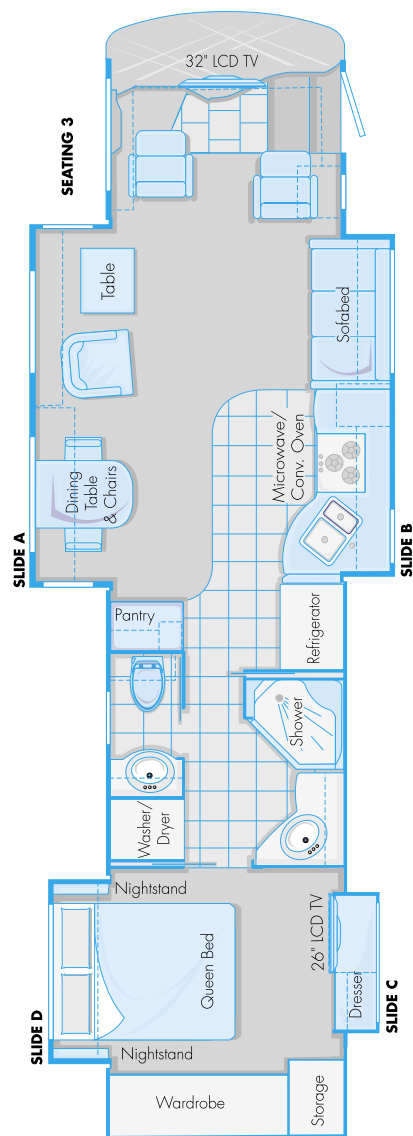
430
470

- Café dinette sleeper
- ○ Additional recliner with ottoman
- ○ Computer table with charging center (replaces occasional table)
- Two folding dinette chairs
- ○ Custom interior décor kit (preset)
- ○ Sculpted carpet in living room
- ○ Tile living room floor (not available under forward roadside slide)
- ○ Radiant floor heating in living room (available only with tile living room floor)
- ○ Radiant floor heating (galley and bath)
- ○ Washer/dryer combo (Series 2000 Splendide)
- x ○ Amana® 22 cu ft two door side-by-side electric refrigerator/freezer with raised panel inserts on doors, with AGM batteries, 200 amp alternator and 3000 watt Xantrex® RS3000 inverter (42' only)
- ○ Stacked washer and dryer (40' Hood River and 42' Siskiyou Summit only)
- ○ Factory delivery
- ○ Single-bowl solid-surface galley sink
- ○ 12 cu ft Norcold 4-door, 2-way refrigerator with ice maker and water dispenser
- x ○ Residential refrigerator with wood panel doors (two additional AGM batteries, 200-amp alternator, and 3000-watt Prosine inverter – 42' only)
- ○ Drop-in 3-burner gas cooktop with gas oven
- ○ Advantium® Speedcook microwave convection oven
- ○ Stainless steel appliance package (refrigerator door and Advantium® oven)
- x ○ Tub/shower combination (floorplan dependent)
- ○ Solid-surface vanity sink(s)

430
470

- ○ 32" LCD high definition TV in bedroom
- ○ TracStar in-motion high definition TV satellite system and receiver in living room and bedroom
- ○ Max storage in bedroom
- x ○ King-size 72"x77" bed (Siskiyou Summit only)
- ○ Air mattress in bedroom
- ○ Built-in fire-resistant safe with combination lock
- x ○ Third roof air conditioner with heat pumps (comes with upgrade to Power Tech 10kW generator)
- x ○ Third roof air conditioner with heat pumps (comes with upgrade to Onan® 10 kW generator)
- x ○ Onan® 10 kW "quiet" liquid-cooled diesel generator with remote start-stop (on electric roll-out) with 3rd roof air conditioner option
- x ○ Power Tech 10 kW "quiet" generator with remote start/stop CAT® liquid-cooled engine (on electric roll-out) with 3rd roof air conditioner option
- x ○ Two 8D AGM house batteries
- ○ RV Sani-Con® tank drain system
- ○ Girard® electric patio box awning and door awning with wind sensor
- ○ Bay entertainment center with 32" LCD high definition TV
- ○ 3M nose protectant
- ○ Ladder with universal assist ladder extension
- ○ Single-directional, half-bay roll-out storage tray(s)
- ○ Dual-directional, full-bay roll-out storage tray(s)
- x SmarTire® II tire monitoring system (requires travel information center)
- ○ Sunscreen windshield cover

2007 Allure 430 Floorplans

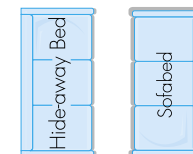


40' Hood River

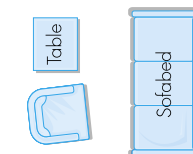
Welcome to quad slide luxury. Supported by Country Coach engineering and a robust tag axle, the Hood River floorplan is available with two to four slide out rooms in a modular platform. Design your space to meet your motorcoaching lifestyle! Measuring two inches under 40' from nose to tail, this forty-footer is made for the back roads, too!

SLIDE-OUT ROOM DIMENSIONS

SLIDE-OUT	WIDTH	DEPTH	HEIGHT
Living room	12'-3"	2'-8"	6'-5"
Galley	11'-8"	1'-8"	6'-3"
PS Bedroom	4'-8"	1'-7"	5'-6"
DS Bedroom	6'-1"	2'-0"	5'-2"

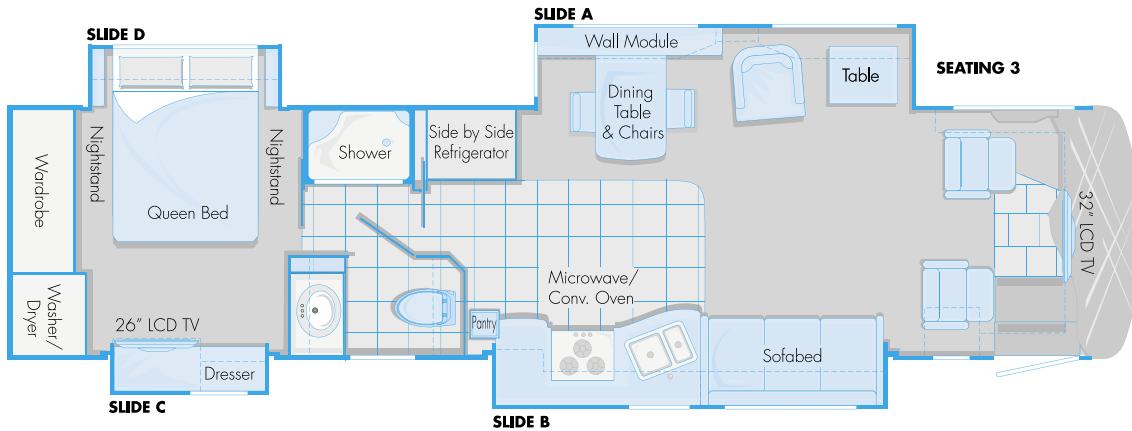


Seating 2



Seating 3

2007 Allure 470 Floorplans



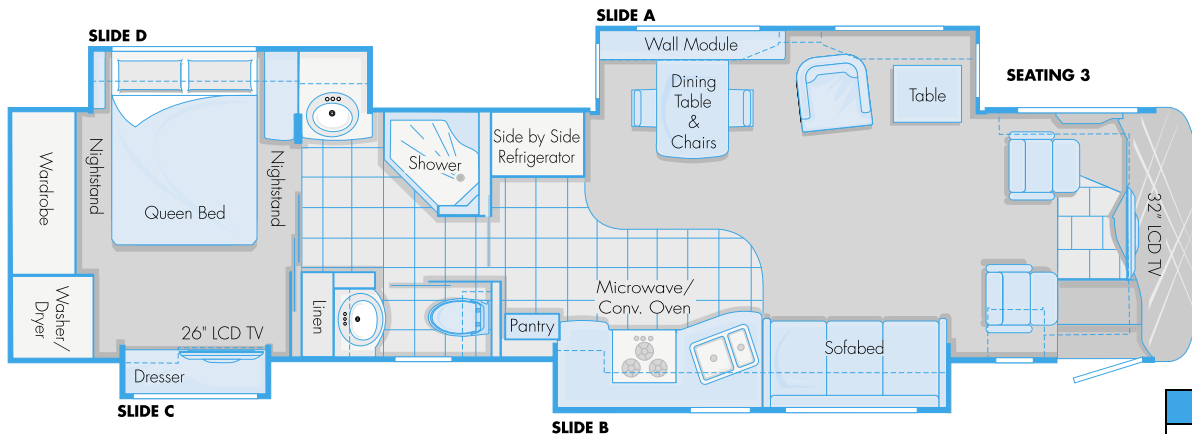
Seating 2



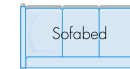
Seating 3



SLIDE-OUT ROOM DIMENSIONS			
SLIDE-OUT	WIDTH	DEPTH	HEIGHT
Living room	12'-3"	2'-8"	6'-5"
Galley	12'-8"	2'-1"	5'-8"
PS Bedroom	4'-8"	1'-7"	5'-6"
DS Bedroom	5'-1"	2'-0"	5'-2"



Seating 2



Seating 3



SLIDE-OUT ROOM DIMENSIONS			
SLIDE-OUT	WIDTH	DEPTH	HEIGHT
Living room	12'-3"	2'-8"	6'-5"
Galley	12'-8"	2'-1"	5'-8"
PS Bedroom	4'-8"	1'-7"	5'-6"
DS Bedroom	9'-0"	2'-0"	5'-2"

37' Sunset Bay

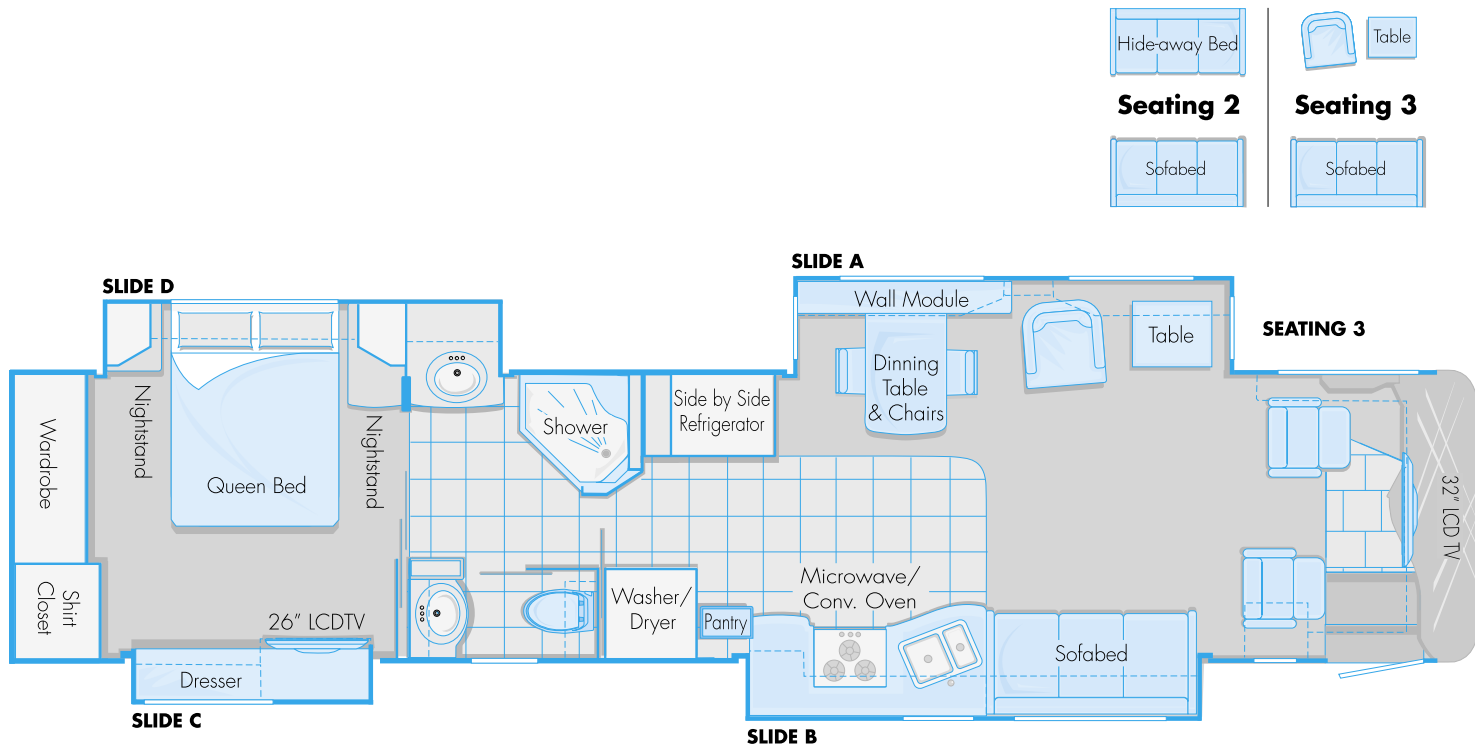
Welcome to the easy elegance of the Sunset Bay, the shortest floorplan offered in the Allure 470. Also the shortest floorplan from Country Coach featuring a tag axle, the Sunset Bay offers unparalleled quad slide living in 37 feet, plus amazing carrying capacity.

40' McKenzie Bridge

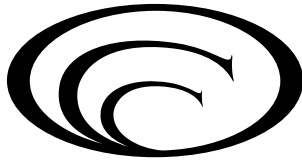
Immerse yourself in the abundant luxury of the McKenzie Bridge. Measuring two inches under 40' from nose to tail, this forty-footer is ready for the rural byways, as well as the interstate! Four available slide rooms and multiple seating arrangements let you customize your dream coach to fit your style. This floorplan features the bedroom suite slide. Just push the button, and watch your world expand!

42' Siskiyou Summit

Welcome to the Siskiyou Summit, the most expansive Allure 400 Series floorplan. More room means more storage space, more relaxing space, more living space. And with four available slide rooms and an even longer bedroom suite slide, this floorplan is the luxury home you've always wanted, wherever you want it to be.



SLIDE-OUT ROOM DIMENSIONS			
SLIDE-OUT	WIDTH	DEPTH	HEIGHT
Living room	12'-3"	2'-8"	6'-5"
Galley	12'-8"	2'-1"	5'-8"
PS Bedroom	6'-6"	1'-7"	5'-6"
DS Bedroom	10'-11"	2'-0"	5'-2"



COUNTRY COACH

210 East Sixth Avenue
Junction City, Oregon 97448

800-654-0223
www.countrycoach.com

IMPORTANT NOTICE: Country Coach does not represent or warrant that its motorcoaches can lawfully be operated on all roads or in all states. Laws restricting the length, width, and/or weight of vehicles vary from state to state. Depending on the model, some Country Coach motorcoaches (as well as similar sized motorcoaches produced by other manufacturers) may not legally be used on certain roads or in certain states, or may only be used on such roads or in such states with special permits or license endorsements. It is the responsibility of each prospective purchaser of a motorcoach to determine any limitations or restrictions on the use of the motorcoach in the states in which the purchaser intends to use it.

Due to constant product improvements, styling, design, equipment and construction are subject to change without notice or obligation. We reserve the right to make changes, but are happy to verify any item on request. **Some items featured may be optional.**