

# SURVEYOR

BY FOREST RIVER



TRUE, SUPER LIGHTWEIGHT TRAVEL TRAILERS AND FIFTH WHEELS

STRONG, DURABLE LAMINATED FIBERGLASS WITH ALL ALUMINUM CAGE CONSTRUCTION



SURVEYOR

# THE SURVEYOR DIFFERENCE



**SURVEYOR.**  
2" WALL WITH (R-9) BLOCK FOAM INSULATION



**COMPETITION.**  
1.5" WALL WITH (R-5) BLOCK FOAM INSULATION

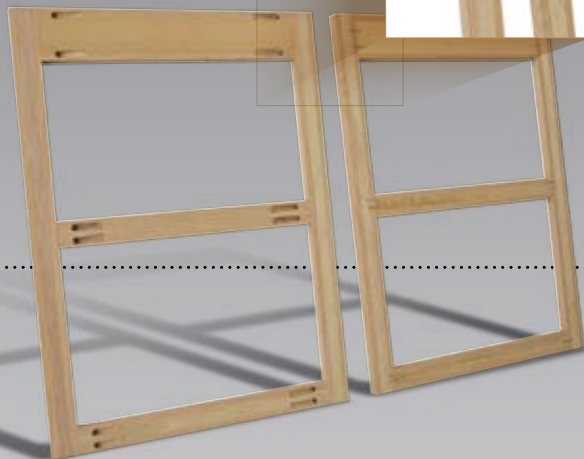
Structural integrity is not compromised at Surveyor! Surveyor's fully laminated walls are visibly stronger and more durable.



**SURVEYOR.**  
HEATED AND ENCLOSED UNDERBELLY.

Surveyor's aerodynamic underbelly is heated and enclosed. The entire underbelly is warmed by radiant heat from the heat duct allowing you to use the coach in colder weather environments. This unique construction method opens up storage space above the floor, while lowering the units' center of gravity for towing ease and stability.

**SURVEYOR.**  
GLUED & SCREWED



**COMPETITION.**  
STAPLED



Surveyor features solid core lumber in our cabinet construction which is screwed and glued together, not stapled, like many manufacturers use.

**SURVEYOR.**  
DUCTED AIR WITH A "QUICK-COOL" FEATURE



All Surveyors 25' and larger have ducted air and use 3" block foam insulation (R-14). All Surveyors have a walkable roof and rear ladder option.

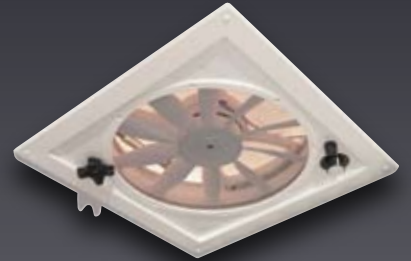
Quick-Cool diverts 85% of cool air to the center of the coach.

**SURVEYOR.**  
WATER FILTRATION



You'll appreciate the water filtration system that is standard with each Surveyor. This compact unit filters water for the entire coach, eliminating those unwanted contaminants and odors. Insuring safe drinking water for you and your family.

**SURVEYOR.**  
FANTASTIC FAN STANDARD

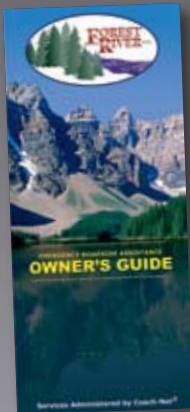


Fantastic Fans are standard in all baths. This 12" 10-blade bath fan significantly increases air circulation and the removal of condensation as compared to the industry's standard smaller power bath vent.

**SURVEYOR.**  
ONE-YEAR ASSISTANCE

Forest River, Inc., in affiliation with Coach-Net®, is providing one (1) year of free Roadside Assistance to all retail purchasers of new Surveyor Travel Trailers and Fifth Wheels. This is just one more way to say "Thank You" and to ensure you have an enjoyable camping experience.

- Emergency Roadside Assistance
- Nationwide Service Appointment Assistance
- Dispatch of On-site Mechanical Service
- \$2000 Trip Interruption Reimbursement
- 24-Hour Toll-Free Emergency Message Service
- Custom Trip Routing and Full Color Maps



**SURVEYOR.** SEAL TEST

Every Surveyor is pressurized and soap tested at every seam and opening to ensure a water tight seal. Surveyor prevents water leaks!

**NO SKELETONS IN OUR CLOSET.**

**SURVEYOR.**



**COMPETITION.**



**What's in your sidewall?** Your Surveyor is constructed with 1.5" tubular aluminum framing in "all" openings. Is this necessary - we think so! Aluminum framed openings add strength and integrity to every Surveyor sidewall. No other lightweight trailer compares.



Surveyor's Self-Supporting 12V Power Rear Slide system opens, closes and locks with the simple push of a button. No bulky support bars or locks to manually install.



MODEL SV-280: HAZEL NUT DÉCOR



Luxury is well within your reach in this extraordinary Surveyor travel trailer. Beautiful residential style cabinetry and kitchen, raised panel cabinet doors, spacious pantry, plus the large entertainment center makes this a great choice for affordable elegance.

Under every Surveyor queen bed you will find plenty of storage space for all your camping needs, and with 80# gas struts, access has never been easier.



(Left) The "storage plus" door with a unique flip-up bunk bed system allows you to pack all your necessities needed to make your camping experience enjoyable.



(Right) The optional pass through storage drawer allows for easy access to all your camping accessories.



MODEL SV-303: ISLAND BLUE DÉCOR WITH WHITE SAND INTERIOR WOOD PACKAGE



The appeal of the optional white sand interior revolves around the thermofoil cabinetry. Specially suited for the RVing environment, it is light but remarkably durable and easy to maintain. Contrasting with the cherry slide-out fascia and wood plank flooring, the cabinetry harmonizes with Surveyor's interior décors. The complete look offers a fresh comfortable style found in today's more upscale homes. In addition, the SV-303 also features a second living room/ bedroom option.

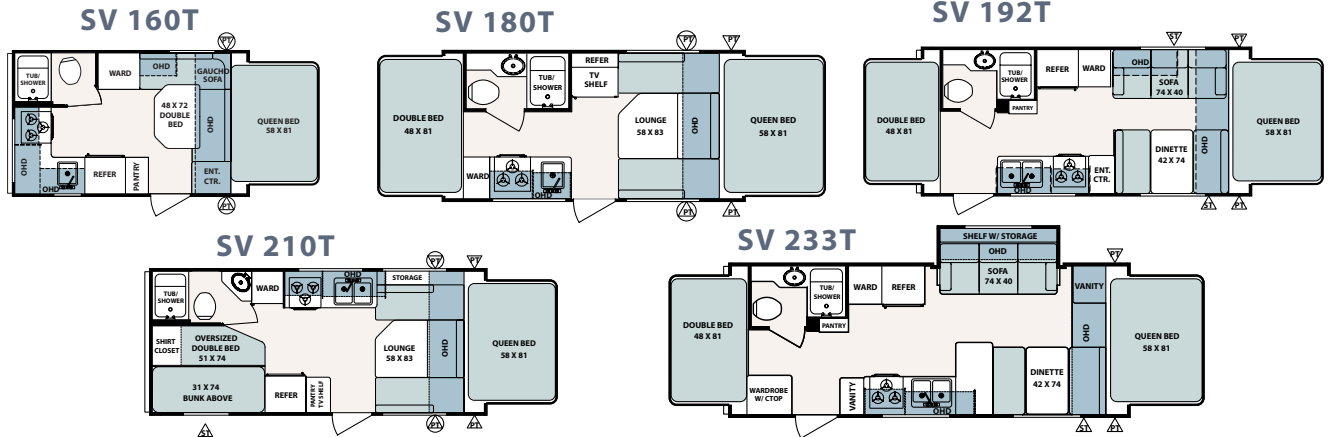


# SURVEYOR

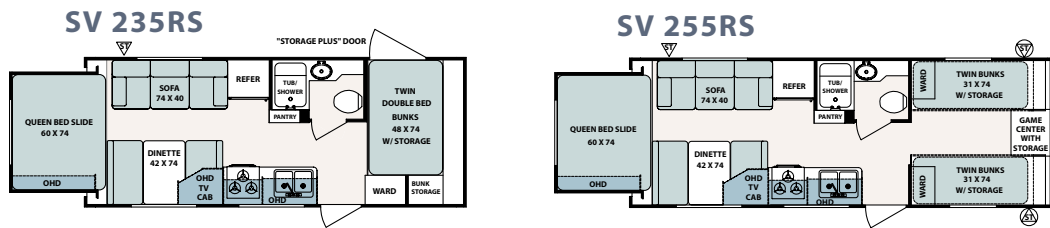
## FLOORPLANS + SPECIFICATIONS

Radius bunk ends with 1,000 lb. capacity are standard on our expandable models. The radius corners are stronger, while large drip rails and automotive rubber seals help prevent moisture penetration. Boltaflex™ weathershield tents offer double flap seals and stain-resistant interiors.

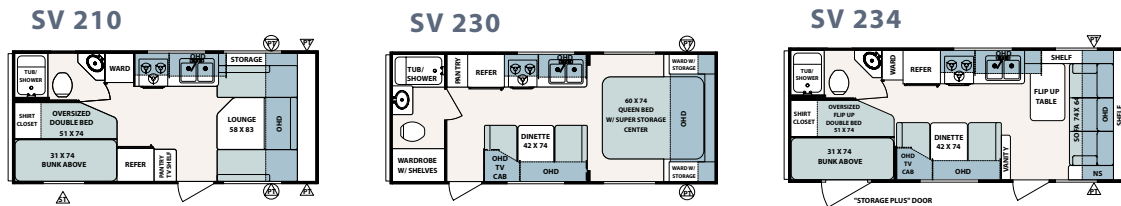
### SURVEYOR EXPANDABLES • 8' WIDE



### SURVEYOR REAR SLIDES • 8' WIDE



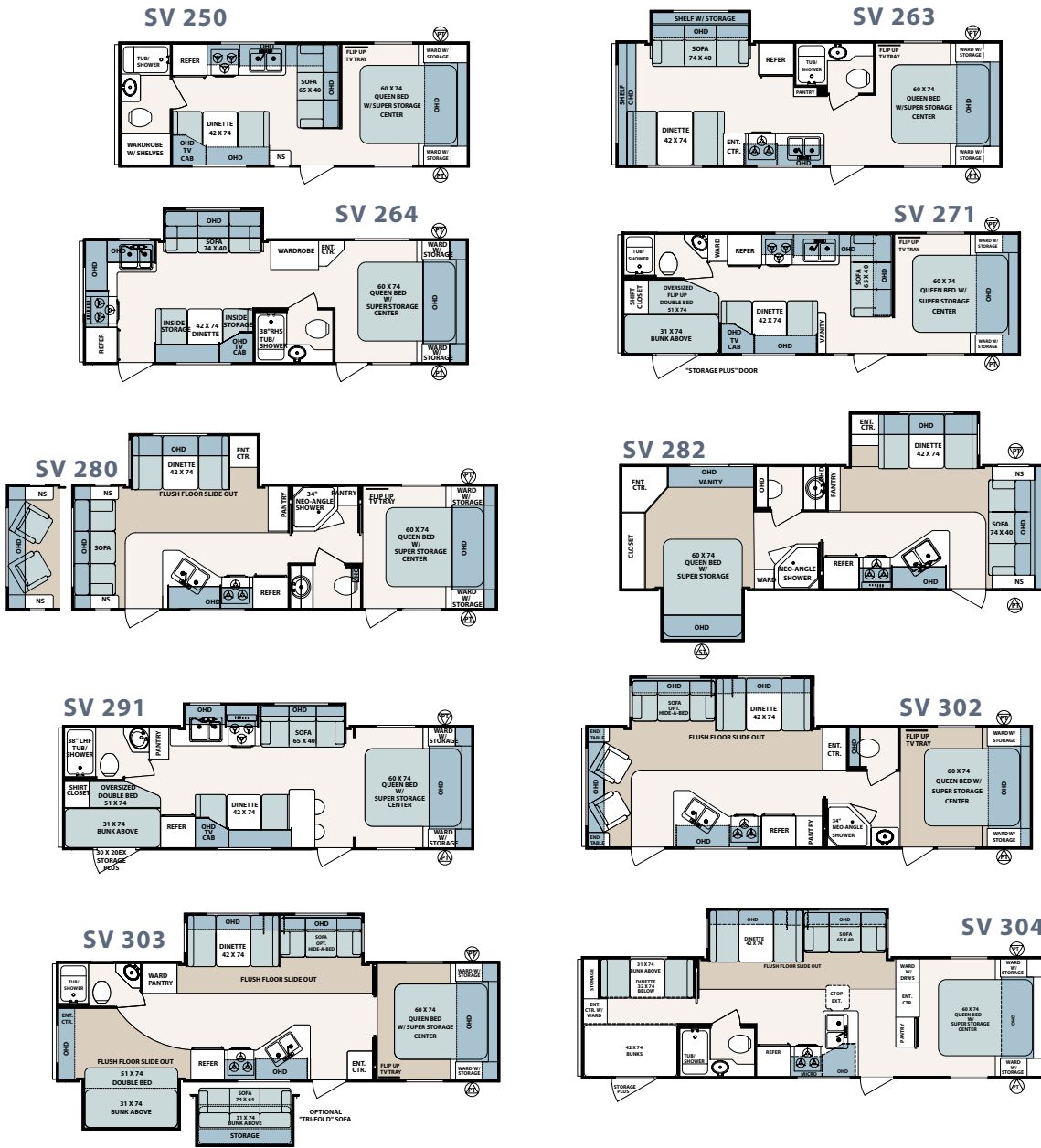
### SURVEYOR TRAVEL TRAILERS - 8' WIDE



	SV160T	SV180T	SV192T	SV210T	SV233T	SV235RS	SV255RS	SV210	SV230	SV234
*Total Dry Weight	2578	2764	3500	3498	3814	3867	4317	3121	3335	3447
Load Capacity	919	957	1638	1789	1372	1045	2787	1790	1470	1544
Hitch Weight	252	456	393	542	441	387	579	386	280	466
Overall length (closed)	17'1"	18'8"	21'10"	22'6"	24'11"	24'6"	27'1"	22'6"	23'11"	24'5"
Overall length (open)	17'1"	21'6"	24'9"	22'6"	27'9"	28'3"	30'9"	N/A	N/A	N/A
Exterior Width	8'0"	8'0"	8'0"	8'0"	8'0"	8'0"	8'0"	8'0"	8'0"	8'0"
Exterior Height (roof edge)	8'4"	8'4"	8'4"	8'4"	8'4"	8'4"	8'6"	8'4"	8'4"	8'4"
Fresh Water (gal.)	36	36	36	36	36	36	36	36	36	36
Grey Water (gal.)	30	30	30	30	30	30	30	30	30	30
Black Water (gal.)	30	30	30	30	30	30	30	30	30	30
Tire Size: 205/75/R14	STD	STD	STD	STD	STD	STD	STD	STD	STD	STD
Tire Size: 225/75/R15	N/A	N/A	N/A	N/A	N/A	N/A	N/A	N/A	N/A	N/A

\*We know weights and dimensions are an important part of your buying decision. Surveyor weighs every model to ensure accuracy.

## SURVEYOR TRAVEL TRAILERS - 8' WIDE



	SV250	SV263	SV264	SV271	SV280	SV282	SV291	SV302	SV303	SV304
*Total Dry Weight	3789	4139	4179	4068	5513	6008	4490	5850	6095	6065
Load Capacity	1211	2945	2814	3022	3292	2914	2475	3086	2710	2896
Hitch Weight	475	559	468	565	680	797	440	811	680	836
Overall length	26'6"	28'6"	28'6"	29'11"	30'8"	30'8"	30'6"	32'8"	33'2"	34'3"
Exterior Width	8'0"	8'0"	8'0"	8'0"	8'0"	8'0"	8'0"	8'0"	8'0"	8'0"
Exterior Height (roof edge)	8'6"	8'6"	8'6"	8'6"	9'6"	9'6"	8'6"	9'6"	9'6"	9'6"
Fresh Water (gal.)	36	36	36	36	36	36	36	36	36	36
Grey Water ( gal.)	30	30	30	30	30	30	30	30	30	30
Black Water (gal.)	30	30	30	30	30	30	30	30	30	30
Tire Size:205/75/R14	STD	STD	STD	STD	N/A	N/A	STD	N/A	N/A	N/A
Tire Size:225/75/R15	N/A	N/A	N/A	N/A	STD	STD	N/A	STD	STD	STD

although refinements to the product can create variations to weights and dimensions. Review a current model at your nearest authorized Surveyor Dealer today.

# SURVEYOR FIFTH WHEELS



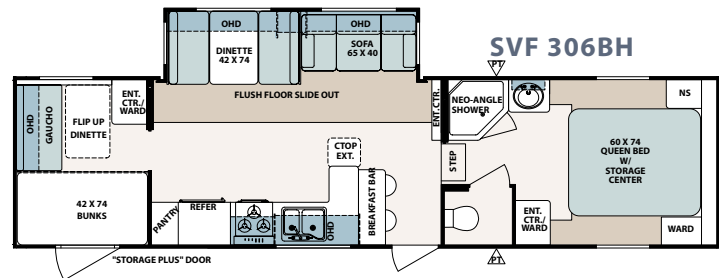
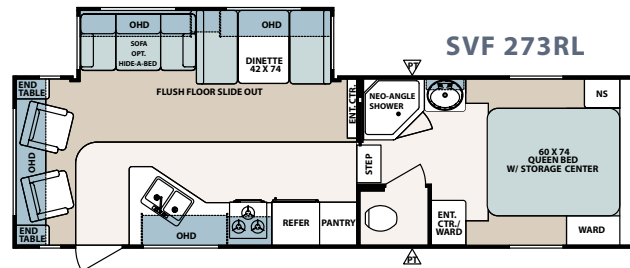
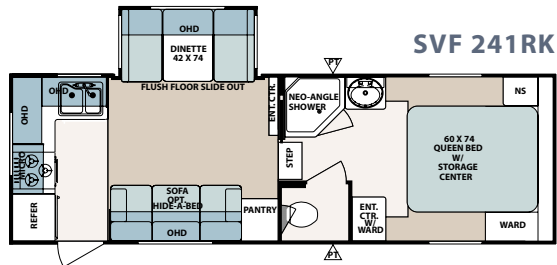
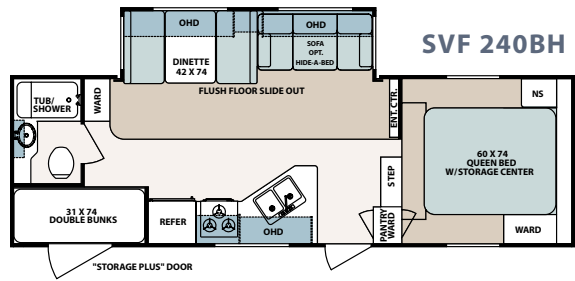
MODEL SVF-306BH: JASMINE DÉCOR WITH WOOD PLANK FLOORING OPTION

Surveyor offers the recreational vehicle family a great line-up of quality built mid-profile fifth wheels that are designed for today's popular small V-8 trucks. Surveyors host all the amenities you're looking for with the towing benefits of light-weight aerodynamics. Bottom line: Surveyor offers superior towing and savings in gas.





The Surveyor fifth wheel offers you a sectionalized storage compartment totaling 80 cu. ft.



### SURVEYOR FIFTH WHEEL SPECIFICATIONS

	SVF240BH	SVF241RK	SVF273RL	SVF306BH
*Total Dry Weight	5907	6063	7079	7301
Load Capacity	1808	1426	2368	2356
Hitch Weight	1193	967	1325	1535
Overall length	25'10"	26'2"	28'10"	33'9"
Exterior Width	8'0"	8'0"	8'0"	8'0"
Exterior Height (roof edge)	10'8"	10'8"	10'9"	10'9"
Fresh Water (gal.)	45	45	45	45
Grey Water (gal.)	35	70	35	35
Black Water (gal.)	35	35	35	35
Tire Size: 205/75/R14	STD	STD	N/A	N/A
Tire Size: 225/75/R15	N/A	N/A	STD	STD

# SURVEYOR

## APPLIANCES/EQUIPMENT

- Air conditioner ready
- Color-coded water lines
- Copper gas lines, double flared
- Dometic, flush-mount refrigerator
- Demand water pump
- Deep double-bowl kitchen sink w/ high rise faucet
- Power range hood with light
- Six gallon gas/electric DSI water heater
- Three burner range top
- 20,000 BTU furnace (ducted 23 - 26)
- 30,000 BTU ducted furnace (27 and above)
- Water heater bypass system
- Monitor Panel

## BATH

- Fiberglass tub/shower
- Adjustable shower head/faucet
- Lavatory sink and faucet
- Medicine cabinet with mirror
- Shower curtain with tieback
- Thetford commode
- Skylight in tub/shower
- Monitor Panel

## CONSTRUCTION

- Welded, Aluminum framed, laminated roof with 3" block foam insulation (R14) & ducted A/C (25' and above travel trailers)
- Welded, aluminum framed, laminated roof with 1-1/2" block foam insulation (R9) (Expandables and 24' and below travel trailers)
- Welded, aluminum cage constructed, laminated walls with 1-1/2" block foam insulation (R9)
- Welded, aluminum framed, laminated floor with 1-1/2" block foam insulation (R9)
- Electric powered slide-out mechanism
- Electric powered rear slide-out mechanism with 1000# capacity
- Truss roof 16" on center w/ rolled fiberglass insulation (5th wheels)
- 3/8" roof decking (5th wheels)

## ELECTRICAL

- Detachable 28', 30-amp power cord
- 55 amp converter with charger
- Exterior 120 volt recept
- Patio light with amber lens
- 12 volt interior lighting
- 120 volt GFI protected circuit Safety

## EXPANDABLE BEDS

- Boltaflex Weathershield tent(s)
- Automotive rubber gasket and compression latches
- Decorative bunk cushions
- Radius door w/ hinge
- 1000 lb. capacity

## SAFETY

- Breakaway switch
- Fire extinguisher
- LP detector
- Smoke Detector
- Ground fault protected electrical circuit(s)
- Dead-bolt door lock
- Safety chains
- Multiple egress windows
- CO Detector

## EXTERIOR

- Rubber roof with 12 year warranty
- Lamilux Super 1000 Fiberglass skin with 2 year warranty
- Radius corner windows
- Butyl tape sealant on seams
- Combination entrance/screen door with dead-bolt lock
- Outside storage compartment(s)
- Self-storing step(s)
- Designer exterior graphics
- Rotocast holding tanks
- Rotocast fresh water tank
- 30# LP tanks
- Heated enclosed underbelly
- Drip rails and down spouts

## INTERIOR

- Sofa bolsters
- Hardwood framed cabinets
- Knife block behind stove
- Panoramic galley window
- Designer interior decors
- Valances with mini-blinds
- No-wax seamless vinyl flooring
- Solid lumber core cabinet fronts assembled with screws
- Residential style cabinet doors with concealed hinges
- Reversible dinette and bunk cushions
- Power range hood with light
- Decorative head board
- Residential style wood drawers w/ metal glides
- In-floor heat ducts
- 78" interior height
- Camel back sofa (Radius)
- Camel back dinette cushions (Radius)
- Decorative oval wall clock
- 80# gas bed struts (Queen beds)
- Adjustable shelves in pantry (Where applicable)

## PLUMBING

- Rotocast holding tanks, underfloor
- Rotocast fresh water tank, underfloor
- Demand waterpump, 12-volt
- City water fill
- Gravity water fill
- Monitor panel
- Water heater bypass kit
- Winterization kit

## RUNNING GEAR

- Super-lube hubs
- Galvanized steel wheel wells
- Independent Torsion suspension system
- Radial trailer tires
- Electric Brakes, all wheels
- Tough, powder coated frame
- 2-5/16" coupler
- Extended hitch pin (5th wheels)



## TRAVEL TRAILER & FIFTH WHEEL STANDARDS & OPTIONS

### EXPANDABLE OPTIONS

**Interior Luxury Package:** Approx. wt. 90 lbs  
Stove cover, CD stereo w/ Remote control & 4 speakers 2 (SV160T & SV180T). Water filtration system, 3 speed Fantastic Fan, 6 gallon G/E DSI water heater, 3 burner cooktop, sink covers, tub surround, & microwave.

**Exterior Luxury Package:** Approx. wt. 163 lbs  
A&E awning, battery box, 30# LP bottles w/cover, spare tire/carrier & cover, outside shower, stabilizer jacks (4), TV antenna w/cable-satellite hook-up.

### TRAVEL TRAILER OPTIONS

**Interior Luxury Package:** Approx. wt. 208 lbs  
Stove cover, CD stereo w/Remote control & 4 speakers, water filtration system, 3 speed Fantastic Fan, 6 gallon G/E DSI water heater, gas oven, sink covers (2), tub surround, microwave, double door refrigerator

**Exterior Luxury Package:** Approx. wt 267 lbs  
A&E awning, 13,500 BTU air conditioner, battery box, 30# LP bottles w/cover, spare tire/carrier & cover, outside shower, stabilizer jacks, TV antenna w/cable-satellite hook-up

### FIFTH WHEEL OPTIONS

**Interior Luxury Package:** Approx. wt. 213 lbs  
Flat screen TV monitor, 5.1 Dolby digital surround sound, remote controlled CD stereo w/DVD player, stove cover, water filtration system, 3 speed Fantastic Fan, 6 gallon G/E DSI water heater, gas oven, sink covers (2), microwave, 2 door refrigerator, tub surround

**Exterior Luxury Package:** Approx. wt. 265 lbs  
A&E awning, 13,500 BTU air conditioner, triple step, 30# LP bottles, spare tire, outside shower, fiberglass front cap, power front jacks, rear stabilizer jacks, TV antenna w/ cable-satellite hook-up

### OPTIONS APPROXIMATE WEIGHT

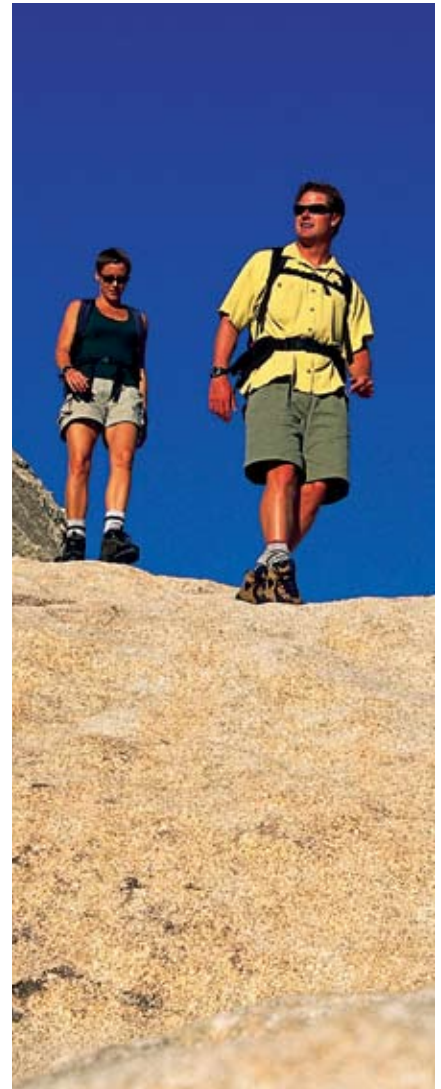
Air conditioner, 13,500 BTU (EXP.)	104 lbs
Air conditioner, 15,000 BTU IPO 13,500	2 lbs
Gas oven (EXP.)	38 lbs
Refrigerator, 2-door (EXP.) n/a SV180T	17 lbs
White sand interior wood package w/wood	
Plank vinyl flooring	0 lbs
Wood plank vinyl flooring	0 lbs
Outside stereo speakers (2)	5 lbs
Chrome wheel covers	8 lbs
Outside grill	15 lbs
Tinted safety glass	0 lbs
Outside storage drawer (select models)	45 lbs
Raised panel refrigerator door inserts	18 lbs
Axle riser w/double step (select models)	10 lbs
Day/nite shades	0 lbs
2 swivel rockers IPO 72" Sofa (SV280)	43 lbs
Trifold sofa IPO double bed (SV303)	25 lbs
Hide-a-bed sofa (select models)	35 lbs
Free Standing Dinette w/4 chairs (Flush Floor Slides)	0 lbs
Power Tongue Jack	10 lbs
Roof Ladder (N/A rear exp. & rear slide-out models)	15 lbs
Slide-Out awning topper	35 lbs
Outside entertainment center (5th wheels only)	3 lbs
Double Step	20 lbs

### GENERAL WARRANTY INFORMATION\*

· Boltflex weathershield tent(s)	1 yrs
· Dometic appliances	3 yrs
· Fiberglass skin	2 yrs
· Lippert slide-out mechanism	3 yrs
· Powder coated frame	2 yrs
· Rubber roof material	12 yrs
· Fantastic Fan	(life of the unit)
· SHURflo water pump	2 yrs
· TV antenna - Wineguard	2 yrs
· Commode - Thetford	2 yrs
· Suspension system	5 yrs
· Suburban appliances	2 yrs
· Congoleum vinyl flooring	5 yrs

### FOREST RIVER ADVANTAGE

- Fantastic Fan in Bath
- Water Filtration System (entire unit)



# TOWING GUIDE

The tow ratings listed below are the highest available for the respective models listed. Certain optional equipment may be required and other restrictions may apply. See your automotive dealer for more information.

ACURA	Engine	Max Towing
MDX	3.5L V-6	3,500

AM GENERAL	Engine	Max Towing
H1 4 dr Open Top	6.6LTD	9,303
H1 4 dr Wagon	6.6LTD	9,036
H2	6.0LV-8	6,700
H2 SUT	6.0LV-8	6,600
H3	3.5LI-5	4,500

BMW	Engine	Max Towing
X3 2.5i	2.5L I-6	3,500
X3 3.0i	3.0L I-6	3,500
X5 3.0i	3.0L I-6	6,000
X5 4.4i	4.4L V-8	6,000
X5 4.8is	4.8L V-8	6,000

BUICK	Engine	Max Towing
Rendezvous	All	3,500
Terraza	3.9L V-6	3,500

CADILLAC	Engine	Max Towing
Escalade ZWD	6.0L V-8	7,400
Escalade AWD	6.0L V-8	8,100
Escalade ESV	6.0L V-8	7,800
Escalade EXT	6.0L V-8	7,500
SRX	3.6L V-6	4,250
SRX	4.6L V-8	4,250

CHEVROLET/GMC	Engine	Max Towing
Avalanche 1500(2WD)	5.3L V-8	8,200
Avalanche 1500(4WD)	5.3L V-8	7,900
Avalanche 2500(4WD)	8.1L V-8	12,000
Colorado/Canyon Ext. Cab (2WD)	3.5LI-5	4,000
Colorado/Canyon Ext. Cab(4WD)	3.5LI-5	4,000
Equinox	3.4L V-6	3,500
Express/Savana 1500 SWB CV (2WD)	5.3L V-8	5,900
Express/Savana 1500 SWB CV (AWD)	5.3L V-8	6,500
Silverado/Sierra 1500 Reg. Cab (2WD)	5.3L V-8	8,400
Silverado/Sierra 1500 Reg. Cab (4WD)	5.3L V-8	9,100
Silverado/Sierra 1500 Crew Cab (2WD)	6.0L V-8	10,100
Silverado/Sierra 1500 Crew Cab (4WD)	6.0L V-8	9,900
Tahoe/Yukon (2WD)	5.3L V-8	7,700
Tahoe/Yukon (4WD)	5.3L V-8	7,700
Suburban/Yukon XL (2WD)	5.3L V-8	8,500
Suburban/Yukon XL (4WD)	5.3L V-8	8,200
Trailblazer/Envoy (2WD)	5.3L V-8	6,800
Trailblazer/Envoy (4WD)	5.3L V-8	6,600

DAIMLER/CHRYSLER	Engine	Max Towing
Caravan/Grand Caravan	3.8L V-6	3,800
Dakota Club Cab (2WD)	3.7L V-6	4,900
Dakota Club Cab (4WD)	3.7L V-6	4,700
Dakota Quad Cab (2WD)	3.7L V-6	4,800
Dakota Quad Cab (4WD)	3.7L V-6	4,600
Durango (2WD)	4.7L V-8	7,400
Durango (4WD)	4.7L V-8	7,200
Ram Reg. Cab (2WD)	4.7L V-8	7,650
Ram Reg. Cab (4WD)	4.7L V-8	7,400
Ram Quad Cab (2WD)	4.7L V-8	7,300
Ram Quad Cab (4WD)	4.7L V-8	7,050
Town + Country	3.8L V-6	3,800

FORD	Engine	Max Towing
Econoline Van (150)	4.6L V-8	6,100
Econoline Van (150)	5.4L V-8	6,500
Escape	3.0L V-6	3,500
Expedition (2WD)	5.4L V-8	8,900
Expedition (4WD)	5.4L V-8	8,600
Explorer (2WD)	4.6L V-8	7,300
Explorer (4WD)	4.6L V-8	7,120
Sport Trac (2WD)	4.0L V-6	5,300
Sport Trac (4WD)	4.0L V-6	5,080
F-150 Reg. Cab (2WD)	5.4L V-8	8,500
F-150 Reg. Cab (4WD)	5.4L V-8	8,200
F-150 Super Crew (2WD)	5.4L V-8	9,500
F-150 Super Crew (4WD)	5.4L V-8	9,200
Ranger Long Box (2WD)	4.0L V-6	6,000
Ranger Long Box (4WD)	4.0L V-6	5,680

HONDA	Engine	Max Towing
Odyssey	3.5L V-6	3,500
Pilot	3.5L V-6	3,500
Ridgeline	3.5L V-6	5,000

INFINITI	Engine	Max Towing
QX56 (2WD)	5.6L V-8	9,000
QX56 (AWD)	5.6L V-8	8,900
FX	All	3,500

ISUZU	Engine	Max Towing
Ascender (2WD)	4.2L I-6	5,800
Ascender (4WD)	4.2L I-6	5,200
I 280 Ext. Cab P/U	2.8L I-4	3,200
I 350 Crew Cab P/U	3.5L I-5	4,000

JEEP	Engine	Max Towing
Commander (2WD)	4.7L V-8	6,500
Commander (4WD)	4.7L V-8	6,500
Grand Cherokee	4.7L V-8	6,500
Grand Cherokee	5.7L V-8	7,200
Liberty (2WD)	3.7L V-6	5,000
Liberty (4WD)	3.7L V-6	5,000

KIA	Engine	Max Towing
Sorento	3.5L V-6	3,500

LAND ROVER	Engine	Max Towing
Range Rover HSE	All	7,716
Range Rover Sport	All	7,716
LR3	All	7,700

LEXUS	Engine	Max Towing
RX 330	3.3L V-6	3,500
GX 470	4.7L V-8	6,500
LX 470	4.7L V-8	6,500

LINCOLN/MERCURY	Engine	Max Towing
Mark LT (2WD)	5.4L V-8	8,900
Mark LT (4WD)	5.4L V-8	8,600
Mariner	3.0L V-6	3,500
Mountaineer (2WD)	4.6L V-8	7,240
Mountaineer (AWD)	4.6L V-8	7,060
Navigator (2WD)	5.4L V-8	8,600
Navigator (4WD)	5.4L V-8	8,300

MAZDA	Engine	Max Towing
B-4000 (4WD)	4.0L V-6	5,580
Tribute	3.0L V-6	3,500

MERCEDES-BENZ	Engine	Max Towing
G320	V-6	7,842
G500	V-8	7,842
G55 AMG	V-8	7,842
ML 350	V-8	7,842
ML 500	V-8	7,842
R-Class	All	4,705

MITSUBISHI	Engine	Max Towing
Endeavor	3.8L V-6	3,500
Montero	3.8L V-6	5,000

NISSAN	Engine	Max Towing
Armada (2WD)	5.6L V-8	9,100
Armada (4WD)	5.6L V-8	9,000
Frontier (4WD)	4.0L V-6	6,300
Murano	3.5L V-6	3,500
Pathfinder	4.0L V-6	6,000
Quest	3.5L V-6	3,500
Titan	5.6L V-8	9,400
Xterra	4.0L V-6	5,000

PONTIAC	Engine	Max Towing
Montana	3.5L V-6	3,500
Torrent	3.4L V-6	3,500

SAAB	Engine	Max Towing
9-7X	4.2L I-6	5,600
9-7X	5.3L V-8	6,500

SATURN	Engine	Max Towing
Relay	All	3,500
Vue	3.5L V-6	3,500

SUBARU	Engine	Max Towing
B9 Tribeca	F-6	3,500
Forrester	F-4	2,400

SUZUKI	Engine	Max Towing
Grand Vitara	2.7L V-6	3,000
XL-7	2.7L V-6	3,000

TOYOTA	Engine	Max Towing
4 Runner (2WD)	4.7L V-8	7,300
4 Runner (4WD)	4.7L V-8	7,000
Land Cruiser	4.7L V-8	6,500
Sienna	3.3L V-8	3,500
Sequoia (4WD)	4.7L V-8	6,200
Tacoma	4.0L V-6	6,500
Tundra Reg. Cab	4.7L V-8	7,100
Tundra Dbl. Cab (2WD)	4.7L V-8	6,800
Tundra Dbl. Cab (4WD)	4.7L V-8	6,500

VOLKSWAGEN	Engine	Max Towing
Touareg	All	7,716

VOLVO	Engine	Max Towing
XC 70	2.5L I-5	3,300
XC 90	All	5,000



Forest River Inc., 2405 Century Drive Goshen, IN 46528  
[www.forestriverinc.com](http://www.forestriverinc.com), [www.forestriveraccessories.com](http://www.forestriveraccessories.com)  
 Ph. 574.642.3119

As Surveyor constantly strives to improve our product, all specifications listed in this informative brochure are subject to change without notice or obligation. Photos may show optional equipment which is not included in the purchase price of the unit. Review a current model on your dealer's lot today.

YOUR SURVEYOR DEALER