

FUN MOVER 2008





Playtime HAS JUST BEGUN

Riding the back roads on your favorite motorcycle. Exploring new trails on an ATV. Taking in the beautiful countryside as you glide high in the sky in a hot air balloon. Transporting your champion dogs to the next dog show. Enjoying some fun on the water in your boat, canoe or watercraft. Or, just traveling in style to your favorite sporting event. Let your fun begin with Fun Mover. The possibilities are endless!





RAPTURE RED SPORT PACKAGE INTERIOR



LIVING QUARTERS

A FULLY EQUIPPED KITCHEN (right), gives you everything you need to plan and prepare meals while on the road. It includes a double door refrigerator, convection microwave oven, three-burner gas range top and laminate countertops with a flip-up countertop extension.

THE SPACIOUS LIVING AREA in Model 42D (top far right), has a full 84" interior ceiling height, and offers all the comforts of home. It is shown with a 32" LCD television on electric swivel and a comfortable bunk in the front overhead, as well as an optional Leather Euro recliner with ottoman and Infiniss™ Leather hide-a-bed with air mattress.

THE SOFA AND DINETTE SLIDE-OUT on Model 42D (lower right), dramatically expands your living area. The booth dinette easily converts into a bed when extra sleeping accommodations are required.



JAVA INTERIOR DECOR / CINNAMON MAPLE CABINETRY





JAVA INTERIOR DECOR / CINNAMON MAPLE CABINETRY



THE CENTRAL vacuum system located in the kitchen comes with a long hose and accessories to help make clean-up a snap anywhere in the motorhome.

**CARGO
AREA**



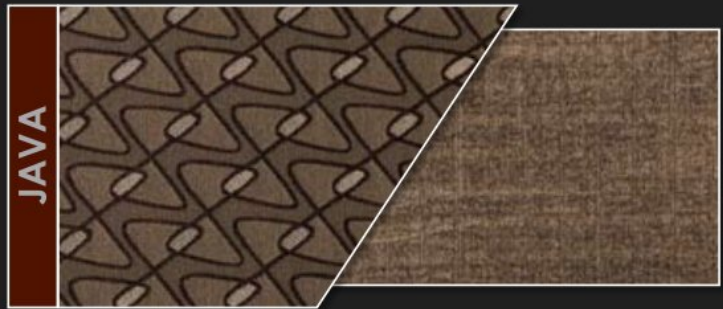
INTERIOR DECOR

The Fun Mover combines all the comforts of a premier motorhome in the front with a roomy cargo area in the back. It's the perfect way to travel across town, across the state or across the country with your sports and hobby equipment.

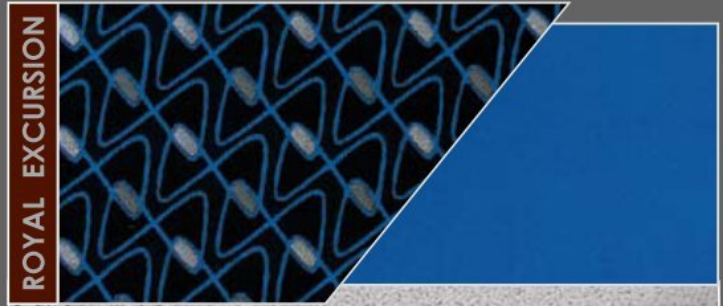
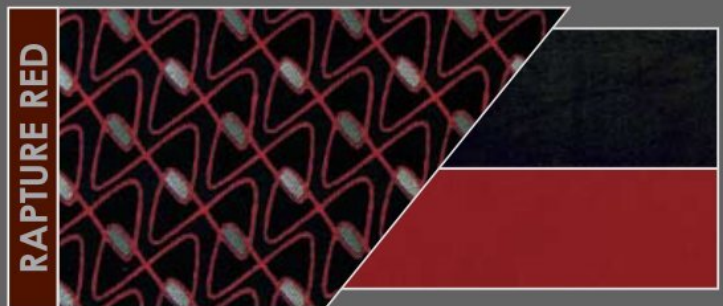
Once you've reached your destination, you never have to worry about finding overnight accommodations. With the Fun Mover, you can be as close to the action as you wish.

AN ELECTRIC DROP-DOWN BED is a popular option in the cargo area. This queen-size bed is locked into a wall mounted track. You can easily raise and lower the bed with a convenient electric switch. When used as a sleeping area, the cargo area can be closed off from the rest of the motorhome for added privacy.

TWO JACKKNIFE CARGO SOFAS provide extra seating for guests. The back-rest of each sofa can be folded down flat to make two extra beds. When not in use, they can be folded up flat against the wall and locked in place.



OPTIONAL SPORT PACKAGES



GRANITE LAMINATE CABINETRY

**NEW
34Y**

INTRODUCING THE NEW 34Y Class A Sport Recreation Vehicle



The Fun Mover Sport Recreation Vehicle is now available as a Class A motorhome. Model 34Y has opposing sofa and dinette slide-outs that increase your living area, and a spacious 96" x 120" cargo area. You'll find ample storage throughout the motorhome. Inside, there is a large wardrobe closet with rack for your personal items, and plenty of overhead cabinets in the living and cargo areas.



Fun Movers are available in many sizes—so you can choose the model that best meets your needs. Model 31D is shown above with the fold-down ramp door that is a full 99-1/4" wide. The non-skid surface allows you to safely load and unload vehicles and equipment.



There is a variety of entertainment features available on the Fun Mover. An optional exterior entertainment center (above) features a 32" LCD television and remote control stereo speakers, plus an AM/FM radio compact disc player and speakers in the garage. In addition, a portable 19" television is available in the garage area on models 31D and 35D (top right), which can be removed and mounted to exterior hookups (lower right).



VERSATILITY



The Fun Mover can make any recreational sport or hobby more enjoyable. You can travel anywhere knowing your accommodations will always be comfortable and your vehicles or hobby equipment will be safe and secure.

ALL FUN MOVERS HAVE A TOWING HITCH so you can tow extra toys such as boats, cars, trailers and more. A rugged 10,000-lb. hitch is standard on models 42C and 42D, while a 5,000-lb. hitch is standard on models 31D, 35D and 34Y.

When using the cargo area to haul vehicles and equipment, the Fun Mover offers nine convenient D-ring tie-downs. The heavy-duty D-rings are affixed to





the cargo area floor in three rows—one row on the far left and far right and one down the center. They allow you to secure large and small items so they remain safely in place while traveling.

A **REAR CARGO SCREEN** (shown above), is available as an option on all models. It lets the breeze in and keeps insects out when you are entertaining or just relaxing in the back of the Fun Mover.





PAIN PACKAGES

Optional Full-Body Paint Packages

ULTIMATE TRAIL



ARCTIC RIPTIDE



TWILIGHT FUSION



EXTREME RED



GLAMIS SANDSTONE



GRAPHICS PACKAGES

Standard Graphics Packages



PACIFIC ECLIPSE

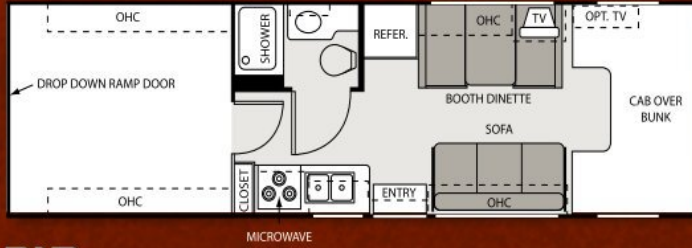


FIRESIDE GRANITE

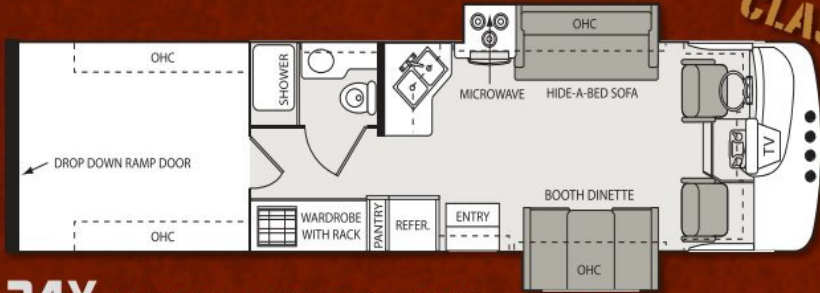


X-PACKAGE

2008 FLOORPLANS

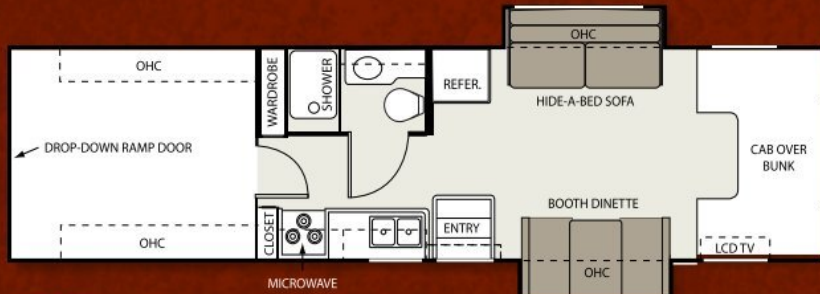


31D CARGO AREA: 96" x 113"

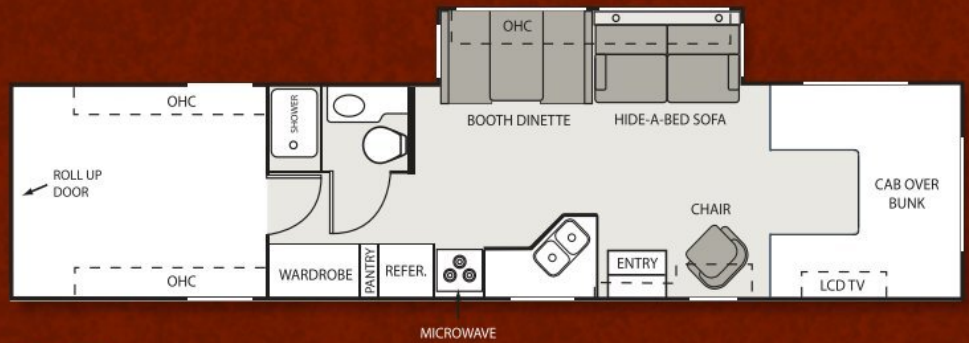


34Y CARGO AREA: 96" x 120"

CLASS A



35D CARGO AREA: 96" x 120"



42D CARGO AREA: 96" x 120"



42C CARGO AREA: 96" x 163"

2008 FUN MOVER STANDARD & OPTIONAL FEATURES

BODY CONSTRUCTION/EXTERIOR		Chevrolet Kodiak chassis 6.6-liter Duramax V-8 diesel engine with exhaust brake and Allison 1000 transmission. Includes Onan® 6.0-KW diesel generator (35D only)	Sport Package interiors include Granite laminate cabinetry, gray linoleum flooring and carbon fiber dash insert with drink tray	20" television in front (34Y only)	S	Onan® Quietdiesel 8.0 (8000-KW) diesel generator (42C and 42D only)	S
Fully welded tubular steel floor system	S			26" LCD television in front (34Y only)	O	Battery disconnect switch	S
Fully welded tubular aluminum roof and sidewall cage construction	S		Golden Maple cabinetry with hidden hinges (not available with Sport Package interiors)	26" LCD television on electric swivel in cab-over (31D only)	O	Emergency start switch	S
Vacu-Bond laminated roof, walls and floors with high-density block foam insulation	S	Ford F-750 crew cab chassis with 6.7-liter Cummins diesel engine and Allison 3000 transmission (42C and 42D only)	Cinnamon Maple or Cherry cabinetry with hidden hinges (not available with Sport Package interiors)	32" LCD television on electric swivel in cab-over (35D, 42C and 42D only)	S	600-watt inverter (standard with electric garage door)	O
Gelcoat fiberglass exterior (42C and 42D only)	S		Hardware with Brushed Nickel finish	Home theater system with DVD player (not available with 14" flat screen television)	O	Automatic shoreline-to-generator transfer switch (optional on 31D)	S
Seamless fiberglass exterior sidewalls (31D, 34Y and 35D only)	S	Factory installed 10,000-lb. hitch (42C and 42D only)	Soft Touch vinyl ceiling (not available on 31D)	Outside entertainment center with CD player, speakers, 110V and 12V outlets and antenna hook-up (31D only)	O	30-amp service (31D only)	S
Slick fiberglass exterior (31D, 34Y and 35D only)	O	Factory installed 5,000-lb. hitch (31D, 34Y and 35D only)	Day/night shades in living room	Outside entertainment center with remote stereo speakers and 26" LCD television; plus AM/FM stereo with CD player and speakers in garage (35D only)	O	50-amp service (not available on 31D)	S
One-piece fiberglass front cap (not available on 31D)	S	Wheel liners	Booth dinette	Outside entertainment center with remote stereo speakers and 32" LCD television; plus AM/FM stereo with CD player and speakers in garage (34Y, 42C and 42D only)	O	Detachable shoreline power cord (not available on 31D)	S
Exterior graphics package only	S	Deluxe exterior mirrors (31D and 34Y only)	Fabric jackknife sofa with pedestal table in place of booth dinette (34Y only)	Satellite dish	O	Second auxiliary house battery (not available on 31D; optional on 34Y and 35D)	S
Full-body paint package with Gel-coat exterior (not available on 31D; standard on 42C and 42D)	O	Heated, remote exterior mirrors (standard on 35D, 42C and 42D)	Infinis™ Leather jackknife sofa with pedestal table in place of booth dinette (34Y only)	In-motion, auto tracking satellite system (42C and 42D only)	O	6-gallon DSI gas water heater (31D and 35D only)	S
Premium one-piece TPO roof—Energy Star approved	S	Fog lights (34Y, 42C and 42D only)	Fabric jackknife sofa (31D only)			6-gallon DSI gas/electric water heater (34Y only)	S
Laminex™ tread entry steps	S	L.E.D. tail lights	Infinis™ Leather jackknife sofa (31D only)	SAFETY & CONVENIENCE		10-gallon DSI gas/electric water heater (42C and 42D only)	S
Automatic electric entrance step	S	Convenient center console with cup holders	Fabric hide-a-bed (not available on 31D)	Entry door with deadbolt lock	S	Water heater bypass system	S
Manual patio awning	S	Deluxe AM/FM stereo with compact disc player (not available on 34Y)	Infinis™ Leather hide-a-bed sofa (not available on 31D)	Telephone jack	S	Heated holding tanks (standard on 35D, 42C and 42D)	O
Electric patio awning (not available on 31D)	O	Oversized AM/FM radio with large buttons, compact disc and cassette player and weather band (34Y only)	Infinis™ Leather hide-a-bed sofa with air mattress (not available on 31D)	Smoke, LPG and carbon monoxide detectors	S	CARGO AREA	
Exterior flush mount radius luggage doors (31D, 34Y and 35D only)	S	Generator start switch on dash	Leather Euro recliner with ottoman (42D only)	Fire extinguisher	S	White laminate overhead cabinets with hidden hinges	S
Slab exterior aluminum luggage doors with insulation (42C and 42D only)	S	Upgrade dash insert with drink tray (standard on Sport Package interiors, 34Y, 42C and 42D)	Glass shower door	LP fitting for exterior grill	S	Roof hatch access with built-in ladder	S
Patio lights	S		GALLEY			Egress windows with wall vents	S
Rear exterior spotlights	O	Power windows and door locks (not available on 34Y)	Double door refrigerator	Convenience package includes keyless entry, two-way radios and valve stem extenders	O	Sealed bypass door	S
Fully automatic hydraulic leveling jacks (not available on 31D)	O	Heated leather power driver and passenger seat (42C and 42D only)	Raised wood refrigerator panels (not available with Sport Package interiors)	Utility package includes two-way radios and valve stem extenders (34Y only)	O	Black rubberized flooring	S
Observation deck (42C and 42D only; not available with Fantastic® fan on 42D)	O	Power driver's seat (Ford E450 chassis, 31D and 34Y only)	Convection microwave oven with 3-burner high-output gas range top (option on 34Y)	Central vacuum system (not available on 31D)	O	D-ring tie downs	S
Auxiliary 60-gallon water tank with sprayer and water pump (42C and 42D only)	O	Infinis™ Leather driver and passenger seats (not available with Sport Package interiors, 42C and 42D)	3-burner high-output gas range top with oven (34Y only)	Dual pane windows (not available on 31D)	O	Two 110V outlets	S
Seamless roto-cast storage compartments	S	Back-up camera	Laminite countertops (31D, 34Y and 35D only)	Cold weather package (not available on 31D and 34Y)	O	Television co-ax outlet	S
Exterior water hose with nozzle	S		Solid surface countertop with matching sink and stove covers (42C and 42D only)	Heated holding tanks (optional on 31D and 34Y)	S	99" wide fold-down ramp door (31D, 34Y and 35D only)	S
AUTOMOTIVE/COCKPIT		INTERIOR		PLUMBING & ELECTRICAL SYSTEMS		Power aluminum liftgate with 18" extension and roll-up garage door (42C and 42D only; option on 35D)	S
Ford 6.8-liter Triton V-10 gas engine and Torqshift transmission (31D only)	S	80" interior ceiling height (31D and 34Y only)	Large double bowl sink	Guardian RV Quietpac™ 40G gas generator (3600-KW) (31D only)	S	Electric garage door with 600-watt inverter (not available with fold-down ramp door)	O
Chevy 6.0-liter V-8 gas engine and Hydra-Matic transmission (31D only)	O	84" interior ceiling height (35D, 42C and 42D only)	Flip-up countertop extension (not available on 31D)	Guardian RV Quietpac™ 55G gas generator (5500-KW) (34Y and 35D only; option on 31D)	S	13,500 BTU rear roof air conditioner (not available with Fantastic® fan option)	O
Class A Ford 6.8-liter Triton V-10 gas engine and Torqshift transmission (34Y only)	S	Residential linoleum throughout (31D, 34Y and 35D only)	Single lever kitchen faucet (31D, 34Y and 35D only)	Onan® RV Microquiet 4.0 gas generator (4000-KW) (31D only)	O	Fantastic® fan (not available with 13,500 BTU rear roof air conditioner on all models and/or observation deck on 42D)	O
Class A Workhorse 8.1-liter Vortec V-8 gas engine and Allison 1000 transmission (34Y only)	O	Ceramic tile throughout (42C and 42D only)	Single lever faucet with built-in sprayer (35D, 42C, 42D, and with Sport Package interiors except 31D and 34Y)	Onan® Marquis Gold 5.5 gas generator (5500-KW) (31D, 34Y and 35D only)	O	19" LCD television	O
Chevy Kodiak chassis with 8.1-liter Vortec V-8 gas engine and Allison 1000 transmission (35D only)	S	Metal entry grab handle	Full extension drawer guides	Onan® RV Marquis Gold 6.0 generator (6000-KW) (35D only; standard with Duramax diesel chassis)	O	AM/FM radio with CD player and two speakers (included with 26" or 32" television outside option)	O
		13,500 BTU roof air conditioner with solar panel in front	Miniblinds in window			Electric drop-down bed (not available on 31D)	O
		Incandescent lighting in living area; fluorescent lighting in cargo area (31D, 34Y and 35D only)	Fantastic® fan (34Y, 42C and 42D only)			Rear cargo screen	O
		Fluorescent lighting throughout (42C and 42D only)	ENTERTAINMENT & ACCESSORIES			Two wheel chocks	O
			14" flat screen television in living area (31D only)			Two jackknife cargo sofas (not available with electric bed option and 31D)	O

THE FOUR WINDS INTERNATIONAL QUALITY DIFFERENCE

What sets Four Winds International apart from other manufacturers? It's a better level of quality built in each motorhome from the inside out. It's exceptional value that is integrated into each design. It's a dedication to innovation that allows us to continually improve our motorhomes. Our ultimate goal is to build the right combination of quality, functionality and durability so you get many years of enjoyment from your new motorhome. It's a commitment we take seriously, and one on which you can depend.

THE DIFFERENCE IS CLEAR

At Four Winds International (FWI), we strive to go beyond your expectations with every motorhome we build. By doing so, you will be able to enjoy a better quality of life while on the road.

Our nationwide dealer network is fully equipped and trained to meet your service needs. The FWI support staff has many years of experience, and is available to provide assistance on all technical,

service and warranty issues. For complete warranty details, contact your Four Winds International dealer.

FWI is proud to offer high-quality products and support services that result in customer satisfaction—one customer at a time. So whether you are a first-time recreational vehicle owner, or an experienced one, we're confident that you'll enjoy years of adventures in your new motorhome. This is the Four Winds International difference.

2008 Fun Mover Specifications

MODEL	31D	34Y	35D	42D	42C
CHASSIS/WEIGHT RATING (LBS.)					
Ford Chassis—Engine	E450 6.8L/V-10	CLASS A 6.8L/V-10	KODIAK N/A	CUMMINS 6.7L	CUMMINS 6.7L
Gross Vehicle (GVWR)	14,500	20,500	N/A	33,000	33,000
Gross Combined (GCWR)	20,000	26,000	N/A	53,000	53,000
Chevy Chassis—Engine	6.0L/V-8	N/A	8.1L/V-8	N/A	N/A
Gross Vehicle (GVWR)	14,050	N/A	22,000	N/A	N/A
Gross Combined (GCWR)	17,600	N/A	26,000	N/A	N/A
Workhorse Chassis—Engine	N/A	8.1L/V-8	N/A	N/A	N/A
Gross Vehicle (GVWR)	N/A	21,200	N/A	N/A	N/A
Gross Combined (GCWR)	N/A	26,000	N/A	N/A	N/A
MEASUREMENTS					
Wheel Base (Ford/Chevy)	211"/212"	228"	253"	333"	333"
Exterior Length (*with liftgate)	31'1"	35'9"	36'6"/37'4"*	43'6"*	43'6"*
Exterior Height (with air conditioning)	11'1"	11'7"	12'1"	12'10"	12'10"
Interior Height/Garage Height	80"/88"	80"/85"	84"/92"	84"	84"
Awning Size	20'	20'	18'	19'	20'
Cargo Area Size	113" x 96"	120" x 96"	120" x 96"	120" x 96"	163" x 96"
CAPACITIES					
Fuel Ford/Chevy (gallons)	55/57	75	80	(2) 50	(2) 50
LPG (pounds)	40.9	88	110.5	110.5	110.5
Fresh Water (gallons)	23	65	50	60	60
Waste Water (gallons)	32	37	37	48	48
Gray Water (gallons)	36	37	37	49	49
Water Heater (gallons)	6	6	6	10	10
Furnace (BTUs)	25,000	30,000	30,000	30,000	30,000
Exterior Storage Capacity** (cubic feet)	16.5	31	41	131	117

**Cargo area not included in overall storage capacity

VEHICLE LOADING: Every effort has been made to provide the greatest number of options for the recreation vehicle owner. Along with these choices comes the responsibility to manage the loads that are imposed by the choices so that they remain within the manufacturer's specified chassis weight limits. Do not overload the recreation vehicle.

IMPORTANT: Towing capacity may vary by chassis model, floorplan, options and loading of the vehicle. This may result in a towing capacity which is less than the maximum capacity of the hitch. Do not exceed the vehicle's Gross Combined Weight Rating (GCWR), or the hitch rating. A separate functioning brake system is required for any towed vehicle or trailer weighing more than 1,000 lbs. (450 KG) when fully loaded. Liquid

capacities and weights are approximations only.

WARNING: This information is intended as a guide only. Weights of individual vehicles may vary. Consult your owner's manual and weight sticker affixed to each vehicle for complete loading, weighing, and towing instructions. Actual filled LP capacity is 80% of listing due to safety shut-off required on tank.

WARRANTY: This vehicle is provided with a one-year, 15,000-mile limited warranty and a three-year, 45,000-mile limited structural warranty. Chassis, component part and appliance manufacturers issue limited warranties covering those portions of the vehicle not covered by the limited warranties issued by Four Winds International. To learn what portions of the vehicle are excluded

from coverage under the limited warranties issued by Four Winds International, please contact your selling dealership or Four Winds International directly, or review the warranty packet inside the vehicle.

Product information, specifications, and photography in this brochure were as accurate as possible at time of printing. Photographs may contain some features that are optional on your vehicle. Since we continually strive to improve our products, actual products may differ. The manufacturer reserves the right, at any time, to make changes in product design, materials, component specifications and pricing, without notice. All capacities are approximate and dimensions are nominal. Some features or options may be different or unavailable in Canada.

WHY THOR IS YOUR BEST RV VALUE

Thor Industries, Inc., listed on the New York Stock Exchange (THO), proudly traces its history back over 70 years to the pioneering days of the recreational vehicle industry with the founding of Airstream, the industry's oldest and most renowned brand. Our total commitment to quality and our philosophy of putting our customers first has led to our continuous growth.

Today, Thor is the largest builder of recreational vehicles. Thor's strong financial condition and years of solid growth are your assurance that we will be here to serve you for years to come. We think this extra peace of mind is important when you are making a significant investment. Because our customers are always #1 with us, we work harder than other manufacturers to satisfy you.

FW

Four Winds
INTERNATIONAL

P.O. Box 1486 Elkhart, Indiana 46515-1486
574-266-1111 Fax: 574-294-8971

www.FUNMOVER-RV.com

 **THOR**
AMERICA'S BEST RV VALUE

© 2006 Four Winds International
Litho USA 1107-30M