

CLASS A MOTORHOMES

2008 AURORA™

The Good Life Starts Here



AURORA™
By Coachmen



AURORA™

By Coachmen

Why settle for anything less than genuine Coachmen quality? Aurora is the perfect blend of classic styling and incredible value. With head turning features inside and out, plus easy-to-use functionality built right in, Aurora exceeds your expectations – affordably.



See why experienced travelers prefer Aurora's upscale styling and amenities. The comforts of a full length slide room, residential style sofa, upgraded lighting package, designer window treatments, and hardwood cabinetry create a luxurious feeling of home wherever you go.

The appeal of Aurora's contemporary kitchen is obvious from the solid-surface countertops and generous storage space, stainless steel appliances, hardwood cabinet doors, a designer pull-out faucet, silverware drawer, to an available convection microwave.

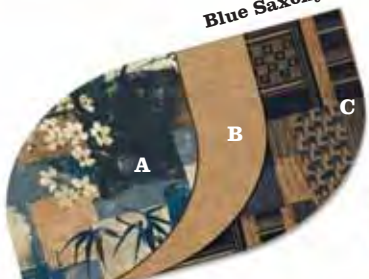
DECOR SELECTIONS FABRIC KEY:

- A.** Main
- B.** Accent
- C.** Bedspread





Blue Saxony



Sicilian Umber



Castleton Cream



Onyx Haze



Lakeside Maple



Brazilian Cherry



AURORA™

By Coachmen

CLASS A MOTORHOMES

2008 AURORA™



Bring it all and be prepared to dress for any adventure your trip presents with ample wardrobe and drawer storage. Relax in the master suite with the space saving 20" flatscreen television, an upscale option.

Enjoy the view inside and out, through the windows of your Aurora. Catch the news of the day on the 26" LCD TV as you relax on the convenient hide-a-bed sofa.



The warm, inviting, yacht inspired corner bed master suite on the 36 FWS combines contemporary window treatments, an elegant bedspread with pillow shams, a designer lighting package, with a rich architectural headboard to create a luxurious retreat for rest and relaxation. (Castleton Cream decor with Brazilian Cherry cabinetry)

OUTSTANDING DESIGN

Aurora is the ultimate Class A Motorhome, with all of the features you'd expect, built right in.

1. Alumaticage™ aircraft grade **aluminum framed construction** throughout the walls and roof, provides a solid and lightweight superstructure
2. Automotive style direct bond **one-piece windshield** with the Sight Rite™ dash increases visibility and reduces front blind spot
3. Custom fiberglass **front and rear caps**
4. Stamped aluminum **side-hinged baggage doors**
5. Store Rite™ large, one-piece, seamless, **rotocast storage bays** secure your gear
6. The **Water Works™ Utility Panel** simply displays how to perform key water functions, such as filling, draining and winterizing. **No-Mess™ Termination** system is an easy to swivel boom arm that provides a convenient storage location for the termination hose. Your storage bay stays cleaner and the hose can remain connected after use
7. **Laminated steel framed floor**
8. **Tinted thermopane windows** (Option)
9. **Even Cool™ insulated A/C ducts** with radius corners for maximum cooling efficiency
10. **Crowned** aluminum framed roof trusses for easy water run off
11. **TPO** (thermoplastic olefin) roof covering



Safety and function blend beautifully in this stylish, steel framed innerspring booth dinette with seat belts at every fixed seating location. (3225 DS)



Access your favorite music! The large button dash stereo has a CD player and built-in weatherband. (Satellite radio ready)



Aurora's command center provides easy access to commonly used gauges and switches.



For some, the driving experience is the best part of the journey. Aurora's cockpit features sleek, automotive lines, plus the exclusive Site Rite™ dash, enhanced with a full 20" downward angle of increased visibility.



Stay connected! A convenient pull-out, passenger side computer desk provides a handy workspace while on the road.

PAINT SELECTIONS

Black Pearl Full Paint



Black Pearl Partial Paint



Canyon Gray Full Paint



Canyon Gray Partial Paint



FLOORPLANS

2008 AURORA™

AURORA™ By Coachmen

LEGEND:

- Carpet ○
- Linoleum ●
- Storage ▲

2008 AURORA	3325 DS	36 FWS	
Chassis	Ford	Workhorse	Workhorse
Chassis Model	F-53	W-22	W-22
Engine Size	V10-6.8L	V8-8.1L	V8-8.1L
Wheel Base	228"	228"	242
Rear Axle Ratio	5.38	5.86	5.86
Tire Size	22.5"	22.5"	22.5"
WEIGHTS			
GVWR (lbs.)	22,000	22,000	22,000
CW (lbs.)	20150†	20150†	19300†
GAWR Front (lbs.)	7,500	8,000	8,000
GAWR Rear (lbs.)	14,500	14,500	14,500
GCWR (lbs.)	26,000	26,000	26,000
CONSTRUCTION DIMENSIONS			
Exterior Length	33'8"	33'8"	35'11"
Exterior Height*	12'	12'	12'
Exterior Width	8'4"	8'4"	8'4"
Interior Width	8'	8'	8'
Interior Height	82"	82"	82"
CAPACITIES			
Sleeping Capacity	5	5	4
Fresh Water Capacity (gal.)	69	69	80
Waste Water Capacity (gal.)	37	37	52
Grey Water Capacity (gal.)	35	35	52
Water Heater Capacity (gal.)	6	6	10
LP Gas Capacity (lbs.)	85	85	85
Fuel Capacity (gal.)	75	75	75
Exterior Storage Capacity (Cu. Ft.)	120†	120†	107

† = Estimated

* Includes clearance for roof A/C

GVWR (Gross Vehicle Weight Rating): The Maximum permissible weight of the unit, including the UVW plus all fluids, cargo, optional equipment and accessories. For safety and product performance, do not exceed the GVWR.

CW (Curb Weight): The weight of the unit without factory or dealer installed options, plus allowance for the weight of full fuel capacity. The "payload capacity" for all other fluids, cargo, occupants, optional equipment and accessories can be determined by subtracting the CW from the GVWR.

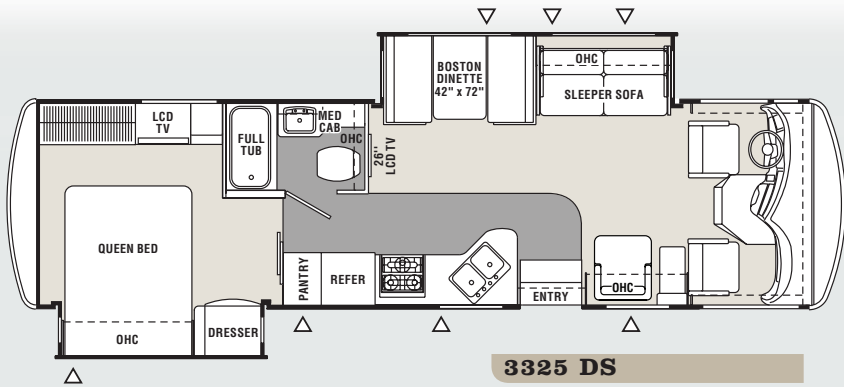
GAWR (Gross Axle Weight Rating): The total weight each front/rear axle, suspension and tire system is designed to carry. When loading the unit, care should be taken to balance cargo weight in consideration of the GAWRs.

GCWR (Gross Combined Weight Rating): The maximum total weight of the loaded unit, plus a tow vehicle. This includes the weight of both the unit and tow vehicle, fuel for each, all other fluids, cargo, occupants, optional equipment and accessories.

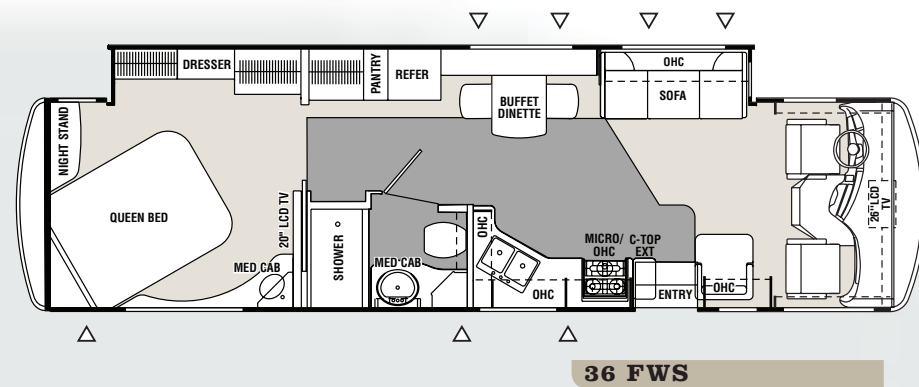
Wider Widths: Numerous Coachmen floorplans feature the "wide body" design concept, which gives you significantly enhanced interior living space and innovative floorplans. In making your purchase decision, you should be aware that a few states restrict access on some or all roads within the state to vehicles with a maximum 96" width, although special road usage permits may be available. Vehicles up to 102" in width are permitted in the vast majority of states. You should confirm the road usage laws in the states of interest to you before making your purchase decision. If width is of concern to you, we invite you to consider the broad array of other Coachmen models offered in the standard 96" width.

IMPORTANT NOTE: All capacities are approximate, and all dimensions are nominal. Coachmen motorhomes are designed to allow for a wide variety of uses, extended trips with two people or short trips with multiple people. Accordingly, each unit allows ample room for sleeping, seating, fluids and cargo. While the customer is the beneficiary of this design, the customer also bears the responsibility to select the proper combination of passengers, cargo, load, and tow vehicle without exceeding the chassis weight capabilities. Consumer may need additional braking capacity to tow loads greater than 1,000 pounds. Seat belts should always be worn for passenger safety. Seat belts are provided at most locations to allow convenience in selecting which seat to occupy. However, it is not intended that all seating positions equipped with a seat belt may be occupied while the vehicle is in motion, without regard to other weight factors.

All Coachmen motorhomes are designed to ensure that the number of passengers allowed while the vehicle is in motion will always at least equal the stated sleeping capacity. Though extra seat belts may be provided, for your safety and the proper operation of your vehicle, limit your passengers to the number allowed by the Net Carrying Capacity of your vehicle.



3325 DS



36 FWS

S=Standard O=Optional

LIVING APPOINTMENTS	
Lakeside Maple Cabinetry	S
Brazilian Cherry Cabinetry	O
Hardwood Cabinet Doors & Drawers	S
Easy Clean Padded Vinyl Ceiling Liner	S
Techwood Drawers w/Rollerbearing Guides	S
Silverware Drawer	S
Designer Counter Tops	S
Linoleum Flooring (Kitchen and Bath)	S
Double Bowl Kitchen Sink - Stainless	S
Designer Faucet w/Pull-out Sprayer	S
Night Shades Coach & Bedroom	S
Hide-a-Bed Sofa (n/a 36 FWS)	S
Comfort Lounge Sofa (36 FWS)	S
Boston Booth Dinette w/Fabric (n/a 36 FWS)	S
Residential Dinette w/4 Chairs	O
Decorative Wall Mirrors	S
Buffet Dinette w/Pull-out Table (36 FWS)	S
Soft Touch Recliner	S
SLEEPING APPOINTMENTS	
Queen Bed	S
Deluxe Innerspring Mattress	S
Headboard	S
Designer Bedspread	S
APPLIANCES & ACCESSORIES	
26" LCD TV - Coach	S
20" LCD TV - Bedroom	S
Dash Stereo w/CD Player, Built-in Weatherband & Sirius Satellite Ready	S
Home Theater w/DVD Player	S
Decorative Wall Lights	S
Cable TV Jack & Bedroom TV Jack	S
Phone Jack	S
Prewire for Satellite Antenna	S
TV Antenna	S

Extra Large Double Door Refrigerator	S
Side-By-Side Refrigerator (n/a 3325 DS)	O
Large Double Door Refrigerator w/Ice Maker	O
Side-By-Side Refrigerator w/Ice Maker (n/a 3325 DS)	O
Stainless Steel Microwave Oven	S
Convection Oven & Cooktop w/Oversized Pots & Pans Drawer	O
Stainless Steel 3-Burner Range w/Oven Range Cover	S

COCKPIT CONVENIENCES

Power Sun Visors	S
Deluxe Pilot Seats w/3-Point Seat Belts	S
Cab Wrap-around Privacy Drape	S
Driver/Passenger Snack Tray	S
3-Way Rear Vision Camera w/7" Monitor	S
Remote Heated Exterior Mirrors	S
Passenger Side Sliding Computer Desk	S
Tilt Steering Wheel	S
Defrost Dash Fans	S
Cruise Control	S
Intermittent Wipers	S
Dash Air Conditioning	S

HEATING & AIR CONDITIONING

35,000 BTU E.I. Furnace	S
Fantastic Fan	O
Low Profile 13,500 BTU Ducted Roof Air Conditioner	S
Rear Low Profile 11,000 BTU Ducted Roof Air Conditioner	S
Power Bath Vent	S

ELECTRICAL & LIGHTING

50 Amp Power Cord	S
55 Amp, 110/12-Volt Power Converter	S
GFI Circuit	S

Outside Recept	S
6500 Series General Gas Generator	S
Lighted Exterior Storage Bays	S
Patio Light	S
Fluorescent Ceiling Lights Throughout	S
Energy Management System	S
Coach Command Center	S
Entry Step Switch Panel	S
Auxiliary Battery*	S
Power Entrance Step - Double	S
Battery Disconnect	S
Exterior A/V Inputs (Trunk Box)	S

PLUMBING & LP SYSTEMS

Double Pedal China Toilet	S
One-Piece ABS Tub Surround	S
On Demand Water Pump	S
Skylight Over the Shower	S
10-Gal. Gas/Electric Water Heater (3325 DS 6-Gal.)	S
Tank Flusher	S
Whole House Water Filtration System*	S
Glass Shower Door	S
No Mess™ Termination System	S
NEW! One-Turn Water Works™ Panel	S

SAFETY & SECURITY

LP Leak Alarm & Smoke Detector	S
Carbon Monoxide Detector	S
Fire Extinguisher	S
Smoke Alarm	S
Dead Bolt Lock at Entrance Door	S
Safety Glass Windows	S
Owners Information Packet	S
Emergency Start Switch	S
Curb Side Scare Light*	S

AUTOMOTIVE/EXTERIOR

22.5" Radial Tires	S
Front & Rear Mud Flaps	S
Crowned & Laminated Roof	S
Full Basement Floor Design	S
Bus Style & Side Hinged Compartment Doors	S
Custom Fiberglass Front & Rear Caps	S
Huge Pass Thru Storage	S
Radius Entrance Door	S
Partial Paint w/Graphics (2 Choices)	S
Full Body Paint (2 Choices)	O
Clear Coat Front End Paint Protection	O
Diamond Plated Stepwell Box	S
Laminated Floor & Sidewalls	S
Flush Floor Hydraulic Slideouts	S
Molded Wheel Well Liners	S
High Gloss Sidewall Material	S
Exterior Lighted Grab Handle	S
One Piece Windshield	S
Automotive Undercoating	S
Push Button Semi Auto Hydraulic Leveling Jacks	S
Deluxe Patio Awning	S
5,000 lb. Towing Hitch w/7-Way Plug	S
Rear Mounted "Wide Tread" Roof Ladder	S
Stainless Steel Wheel Liners (Workhorse Only)	S
Aluminum Rims (Ford Only)	S
Tinted Thermopane Windows	O
Bedroom Slide-Out Room Awning	S
Coach Slide-Out Room Awning	S
CSA Upfit	O

*Not available on units shipped to Canada

AURORA™

By Coachmen

The Good Life Starts Here

When you go RVing, there's one thing you should always leave behind: worry.

At Coachmen, our no hassle warranty is our commitment to you, to assure your ongoing satisfaction.

This no hassle warranty means that we won't refer you back to some supplier you've never heard of. We won't bounce you back and forth between the dealership and the factory. Our dealers are authorized to solve your problems on the spot and get you on your way without fuss, hassle or red tape.

Also, should you ever need service or repair; it is easy to find one of the hundreds of Coachmen dealers or authorized repair centers nationwide.

We take pride in working with you to keep your RV experience as enjoyable as possible. Our toll-free service hotline (800-453-6064) and online service support center (located @ easyRVing.com) provide you access to a Coachmen service representative as well as access to warranty coverage information, maintenance information, troubleshooting tips, dealer locations and other helpful information on demand. We're with you every step of the way. Coachmen. You couldn't ask for an easier traveling companion.

To see how Coachmen is making the easy life even easier, visit www.easyRVing.com or call **800.353.7383**.



All information contained in this brochure is believed to be accurate at the time of publication. However, during the model year, it may be necessary to make revisions and Coachmen reserves the right to make all such changes without notice, including changes in prices, colors, materials, equipment and specifications, as well as the addition of new models and the discontinuance of models shown in this brochure. Therefore, please consult with your Coachmen dealer and confirm the existence of any materials, design or specifications that are material to your purchase decision.



Visit www.easyRVing.com today for more information to:

- Build your own RV
- Find the right Coachmen for you
- Compare different Coachmen models



Coachmen Recreational Vehicle Company, LLC

P.O. Box 30, Middlebury, IN 46540

©2007 Coachmen Recreational Vehicle Company, LLC.

All rights reserved. Litho in USA 6/07