

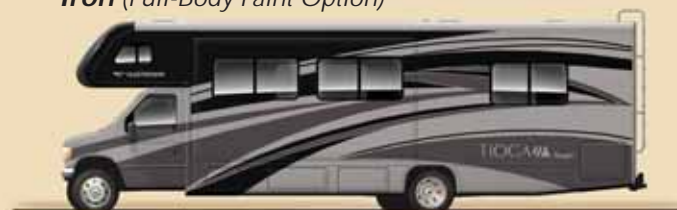
TIOGA Ranger

Class C

Standard Graphics



Iron (Full-Body Paint Option)*



Platinum (Full-Body Paint Option)*



Shalestone (Full-Body Paint Option)*



Driven to Explore

*Additional full-body paint color schemes are also available. See your Fleetwood dealer or visit our website at www.fleetwoodrv.com to view all graphic and color choices.

INTERIOR DECORS

Desert Sand

LIVING/DINING ROOM



Dinette Cushions

BEDROOM



Bedspread



Sofa



Headboard

Starlight

LIVING/DINING ROOM



Dinette Cushions



Bedspread



Sofa



Headboard

Wood Finishes

Bijou Cherry

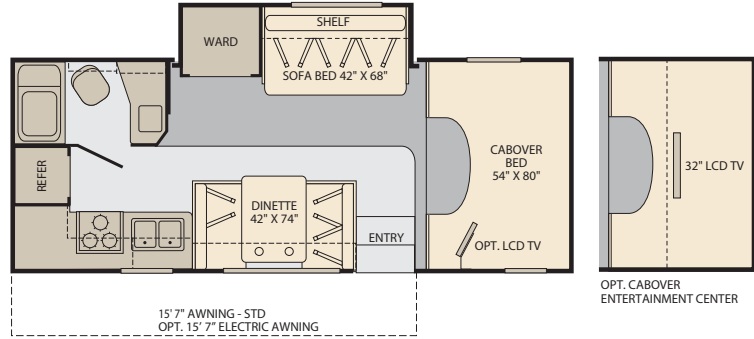


Plantation Cherry



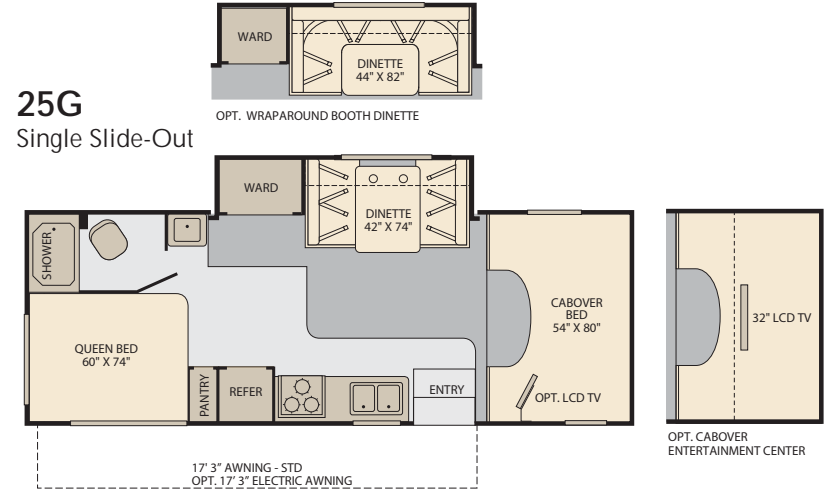
FLOOR PLANS

23R Single Slide-Out



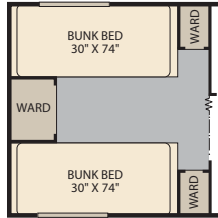
Interior Storage Capacity: 74 cu. ft.
Exterior Storage Capacity: 9 cu. ft.

25G Single Slide-Out



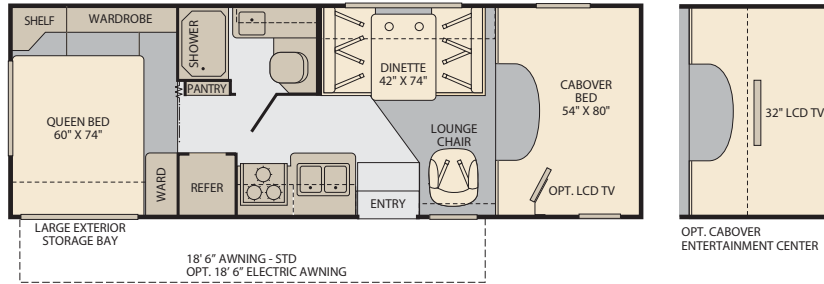
Interior Storage Capacity: 108 cu. ft.
Exterior Storage Capacity: 64 cu. ft.

29V

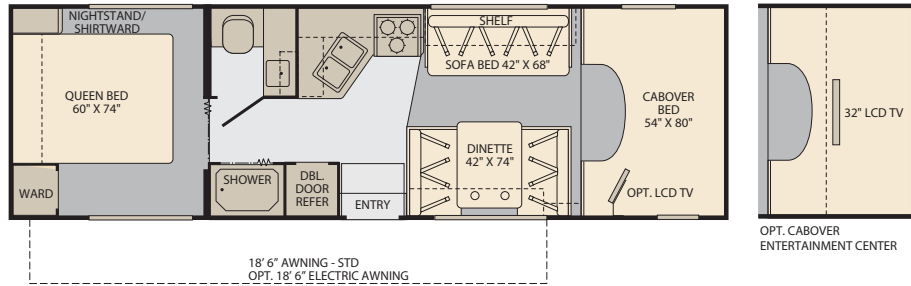


OPT. DOUBLE BUNK BEDS

26Q

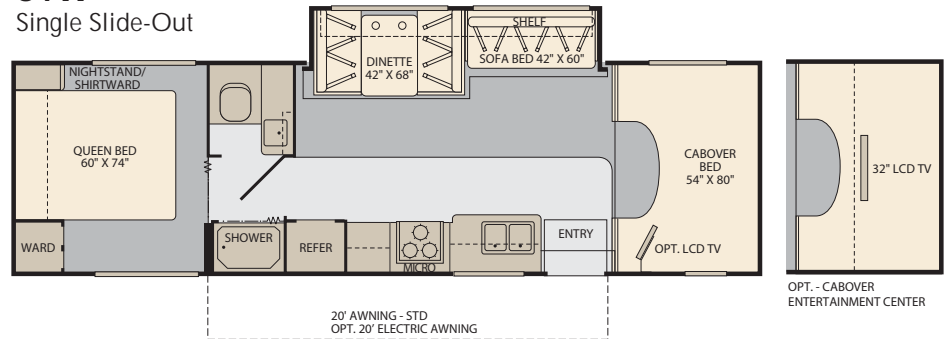


Interior Storage Capacity: 70 cu. ft.
Exterior Storage Capacity: 125 cu. ft.



Interior Storage Capacity: 99 cu. ft.
Exterior Storage Capacity: 101 cu. ft.

31W Single Slide-Out



Interior Storage Capacity: 77 cu. ft.
Exterior Storage Capacity: 113 cu. ft.

STANDARD FEATURES

INTERIOR

INTERIOR THROUGHOUT

- Complete TuffPEX Plumbing System
- 12V Water Pump, Demand Operation
- 13,000 BTU Conventional Air Conditioner (23R, 25G)
- 13,000 BTU Ducted Air Conditioner w/Chill Grille (26Q)
- 15,000 BTU Ducted Air Conditioner w/Chill Grille (29V, 31W)
- 30,000 BTU Furnace, Wall Mounted Thermostat
- 6 Gallon Propane Water Heater w/ Electronic Ignition
- Raised Panel Hardwood Cabinet Doors
- Hidden Cabinet Door Hinges
- Auxiliary Battery w/Disconnect Switch
- Deluxe Roller Bearing, Full Extension Drawer Guides & Transit-Ship Locks
- Water Pump w/On/Off Switches at Galley & Lavy
- Quality Constructed Furniture by Flexsteel®
- Water Heater Bypass Valve Fresh Water System Winterization
- Central Monitor Panel
- GFI Circuit Protection
- Pleated Shades in Living Room & Bedroom
- AC/DC Load Center w/12V Converter/ Battery Charger

DRIVER CONVENIENCE

- 3 Point Seat Belts at Driver & Front Passenger Seats
- Auxiliary Emergency Start Assist Switch on Dash
- In-Dash AM/FM/Radio w/CD Player & 4 Speakers
- Power Windows & Door Locks
- 54" X 80" Cabover Bed with Privacy Curtain, Roof Vent & Sliding Side Windows
- Cabover Bunk Ladder
- Driver/Front Passenger Airbag Supplemental Restraint System
- Cockpit Area w/Tilt Wheel, Cruise Control, Dome Light, Beverage Cup Holders, Map Pocket

LIVING ROOM

- Ceiling Lights w/Wall Switches (Entry & Bath)
- Dinette w/2 Cup Holders, Convertible for Sleeping
- Sofa Bed (23R, 29V, 31W)
- Swivel Base Lounge Chair w/Dual Lock Position (26Q)

GALLEY

- 3 Burner Range w/High Output/Piezo Ignitor & Oven
- Decor Wall Border
- Dometic® 6 cu. ft. Refrigerator/Freezer
- Real Wood Drawers
- Microwave Oven w/Electronic Touch Pad
- Raised Panel Refrigerator Inserts
- Rangehood w/Light & Fan
- Residential Size Double Bowl Sink
- Whole Coach Water Filtration System
- Cook Top Cover

BEDROOM

- Bedsprad w/Reverse Pillow Shams
- Wall Space for TV w/AC Receptacle & Cable Jack
- Decorative Reading Lights
- Queen Bed w/Innerspring Mattress (Select Models)

BATHROOM

- Bath Door w/Residential Passage Lock and Towel Bars
- China Bowl Toilet w/Hand Sprayer
- Medicine Cabinet w/Wood Construction
- Shower Head w/Flexible Hose Extension
- Skylight/Roof Vent w/12V Fan
- Wall Mounted Mirror (Select models)
- Molded ABS Shower/Tub w/Surround
- Residential Style Faucet w/Large Sink
- Shower Curtain

SAFETY/CONVENIENCE

- 10 ABC Fire Extinguisher
- Carbon Monoxide Detector/Alarm
- Exterior & Interior Entry Assist Handle
- Propane Detector/Alarm
- Smoke Detector/Alarm
- Multiple Seatbelt Locations

EXTERIOR

THROUGHOUT

- High Gloss Tuff-Coat® Smooth Fiberglass Exterior
- Large 1" (Inside Diameter) Water Tank Drain
- Sewer Hose Storage in Bumper
- EZ Glide® Slide-Out Room (Select Models)
- Debris Awning Above All Slide-Out Rooms
- Trailer Hitch w/7 Pin Electrical Hook-Up†
- Deluxe Wheel Covers
- Dual 6V Deep Cycle Auxiliary Batteries
- Onan® 4.0kW Microquiet Generator
- Patio Awning
- Full Size Spare Tire w/Carrier (Select Models)
- Full Size Spare Tire (Select Models)
- Rear Ladder

BODY STRUCTURE

- One-Piece Molded Fiberglass Front End Cap
- Vacu-bond® Hull Lamination Process
- Vacu-bond® Floor
- Royal Tuff-Ply Radius Roof w/Ducted A/C
- Sidewalls Framed with 1 1/2" Aluminum Tubing
- Corrosion Resistant Aluminum Tube Hull Framing
- Molded Rear Wheel Trim Flares
- Steel Powder Coated Rear Bumper
- Powder Coated, Steel Running Boards
- 26" Wide Radius Corner Entry Door w/Window

SAFETY/CONVENIENCE

- 30 Amp, 30' Power Cord, Compartment Storage
- AC Duplex GFI Receptacle on Patio Side
- Amber Porch Light w/Interior Switch
- Automotive Safety Glass
- Breakaway Side Mirrors
- Entry Door w/Screen Door & Deadbolt Lock
- High Mounted Large Taillights
- Hydraulic 4 Wheel Disk Brakes w/4 Wheel Anti-Lock Brakes
- Radius Tinted Windows

OPTIONS

INTERIOR

- Vinyl Flooring Throughout
- 19" LCD Wide-screen TV w/Remote & DVD Player
- Satellite Radio
- Power Roof Fan-Tastic® Vent Fan
- Double Bunk Beds w/Cushions (29V)
- Glass Shower Door Enclosure (Select Models)
- 15" LCD TV (Bedroom)
- Cabover Entertainment System: 32" LCD TV w/Home Theater

EXTERIOR

- Full Body Paint
- Dual Pane Windows
- Holding Tank Heater
- Wash Unit w/Faucet, Flexible Shower Hose (Select Models)
- Stainless Steel Wheel Liners
- Power Electric Step
- Breakaway Side Mirrors w/Power Adjust & Heat Control
- Rear Vision Camera
- Exterior Entertainment Center
- Toilet Tank San-T-Flush™ System

FLEETWOOD ADVANTAGES

- Full Body Paint Option
- One-Piece Molded Fiberglass Front End Cap
- 19" LCD Widescreen Color TV w/Remote & DVD Player
- Vacu-bond® Walls w/Smooth High Gloss Exterior Tuff-Coat® Fiberglass
- Mortise & Tenon Hardwood Cabinet Doors
- Up to 5,000 lbs Towing Capacity†

WEIGHTS & MEASUREMENTS



WEIGHTS

MODELS	23R	25G	26Q	29V	31W
Engine Displacement (Liters)	6.8	6.8	6.8	6.8	6.8
Wheelbase (Inches)	158"	176"	176"	198"	214"
GVWR (lbs) ¹	14,500	14,500	14,500	14,500	14,500
Front GAWR (lbs) ²	5,000	5,000	5,000	5,000	5,000
Rear GAWR (lbs) ²	9,500	9,500	9,500	9,500	9,500
GCWR (lbs) ³	19,500	19,500	19,500	19,500	19,500
Hitch Rating Weight (lbs) [†]	5,000	5,000	5,000	5,000	5,000
Tongue Weight (lbs) [†]	500	500	500	500	350
Fuel Capacity (gal)	55	55	55	55	55

DIMENSIONS AND CAPACITIES

MODELS	23R	25G	26Q	29V	31W
Overall Length ⁴	24' 4 ½"	26' 2 ½"	27' 4 ½"	30' 4 ½"	31' 7 ½"
Overall Height (with A/C)	11' 4"	11' 4"	11' 4"	11' 4"	11' 4"
Overall Width (maximum) ^{5, 6}	102"	102"	102"	102"	102"
Interior Height (maximum)	82"	82"	82"	82"	82"
Interior Width (maximum)	96"	96"	96"	96"	96"
Fresh Water Holding Tank (gal)	60	50	60	60	50
Grey Water Holding Tank (gal)	36	36	32	37	37
Black Water Holding Tank (gal)	37	37	38	37	37
Water Heater Tank (gal)	6	6	6	6	6
Appliance Propane Tank (gal) (WC) ⁷	14	14	14	14	14

Liquid Weight Reference: Water (gal) = (8.3 lbs/3.8kgs) Fuel (gal) = 6.1 lbs/2.8 kgs) Propane (gal) = (4.2 lbs/1.9 kgs)

Metric Conversion: Multiply pounds x 0.453 to obtain kilograms. Multiply gallons x 3.785 to obtain liters. Multiply liters x 61 to obtain cubic inches.

CHASSIS

Model: Ford® E450	Alternator: 115 Amp
Engine: 6.8L Triton V10	Horsepower: 305HP
Torque: 420 lb-ft @ 3250 RPM	Transmission: 5-Speed Automatic w/Overdrive

- GVWR (Gross Vehicle Weight Rating) is the maximum permissible weight of this fully loaded motor home. The GVWR is equal to or greater than the sum of the (UVW) unloaded vehicle weight plus the (CCC) cargo carrying capacity*.
- GAWR (Gross Axle Weight Rating) is the maximum permissible loaded weight a specific axle is designed to carry.
- GCWR (Gross Combined Weight Rating) is the value specified by the motor home manufacturer as the maximum allowable loaded weight of this motor home with its towed vehicle. Towing and braking capacities may be different. Refer to Fleetwood and chassis manufacturer's manuals for complete information.
- Length taken from front bumper to rear bumper (excludes accessories).
- Excludes safety equipment and awnings.
- Motor homes feature a body-width over 96 which will restrict your access to certain roads. Before purchasing, you should research any state and/or province road laws which may affect your usage.
- Tank manufacturer's listed water capacity (WC). Actual propane capacity is 80% of water listing as required by the safety code.

† The chassis manufacturer recommends the installation of a supplemental brake control system to activate the brakes on the vehicle or trailer you are towing. Hitch receiver ratings expressed are maximum for the hitch receiver installed and may require the purchase of additional equipment that is dependent on the weight of the towed load. Consult with hitch receiver manufacturer for further information.

N/A = not available at time of printing.

*UVW and CCC are found on the cargo carrying capacity label in each RV.

IMPORTANT — PLEASE READ: Product information, photography and illustrations included in this publication were as accurate as possible at the time of printing. For further product information and changes, please visit our website at www.fleetwoodrv.com or contact your local Fleetwood dealer. Prices, materials, design and specifications are subject to change without notice. All weights, fuel, liquid capacities and dimensions are approximate. Fleetwood has designed its recreational vehicles to provide a variety of uses for its customers. Each vehicle features optimal seating, sleeping, storage and fluid capacities. The user is responsible for selecting the proper combination of loads (i.e. occupants, equipment, fluids, cargo, etc.) to ensure that the vehicle's capacities are not exceeded.