

# 2010 *Chateau*

BY FOUR WINDS INTERNATIONAL





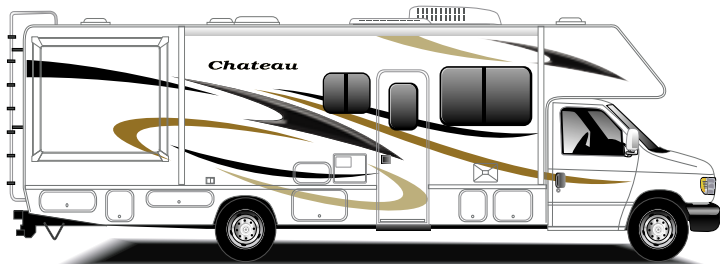
**Standard Cinnamon  
Maple Cabinetry**

**Cabinetry**

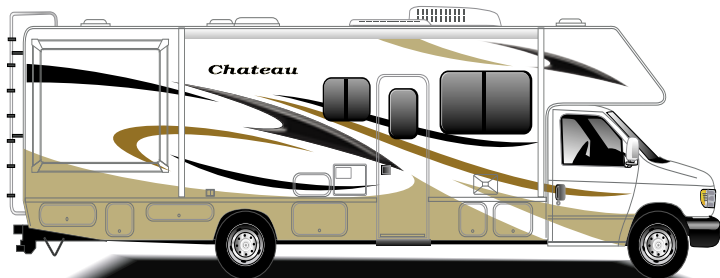


**Optional Cherry  
Cabinetry**

**Exteriors**



**Standard Graphics Package**



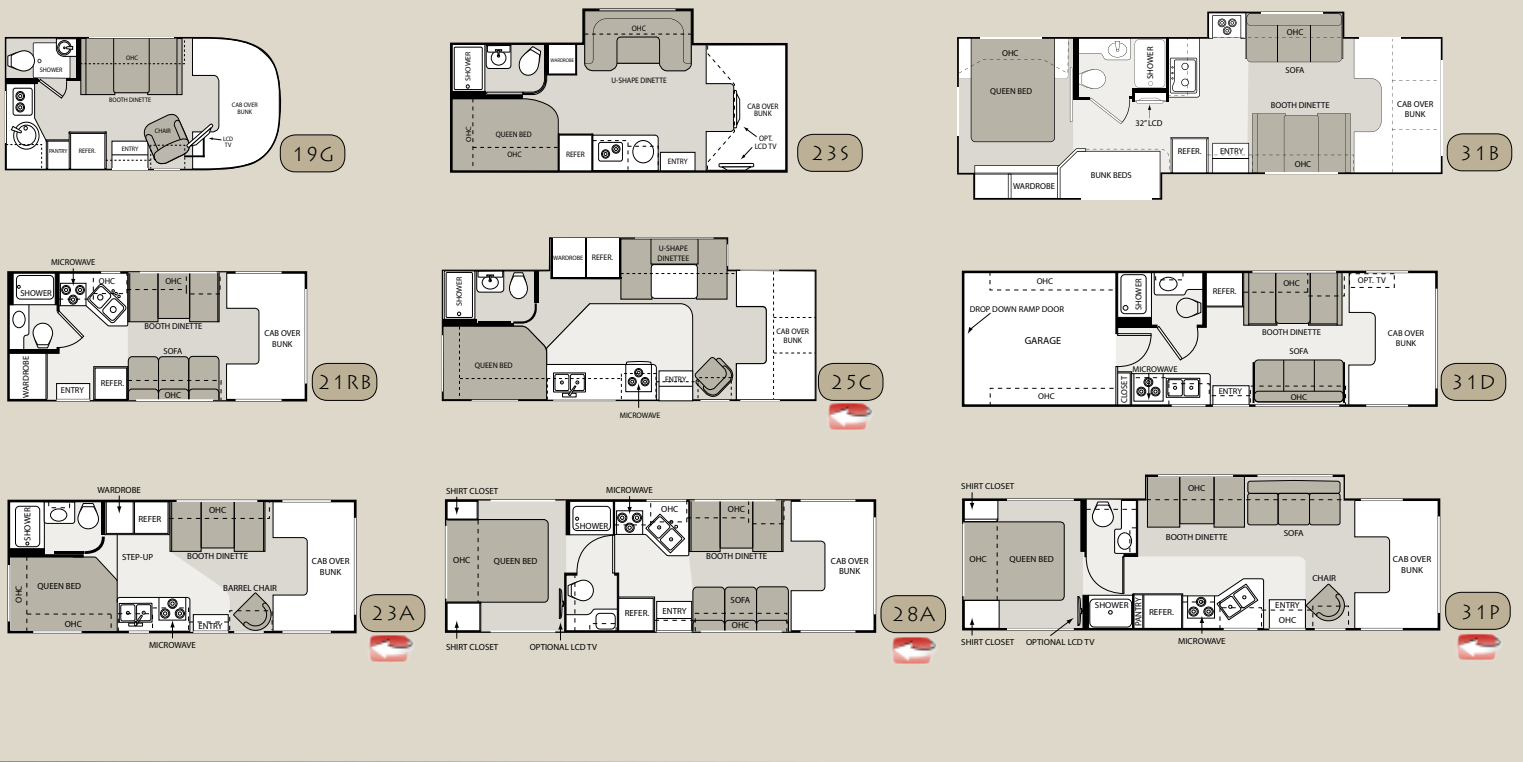
**Optional Partial Paint and Graphics Package**

**Interiors**

<b>Seascape II</b>	<b>A.</b>		<b>B.</b>	
	<b>A.</b>		<b>B.</b>	
	<b>A.</b>		<b>B.</b>	



# Floorplans



# Specifications

	Model	19G	21RB	23A	23S	25C	28A	31B	31D	31P
<b>WEIGHT RATING (LBS.)</b>	<b>Ford Chassis with Triton engine</b>	5.4L/V-8	5.4L/V-8	6.8L/V-10	N/A	6.8L/V-10	6.8L/V-10	6.8L/V-10	6.8L/V-10	6.8L/V-10
	Gross Vehicle (GVWR)	9,600	11,500	12,500	N/A	14,500	12,500	14,500	14,500	14,500
	Gross Combined (GCWR)	13,000	13,000	18,500	N/A	20,000	18,500	20,000	20,000	20,000
	<b>Chevy Chassis with 6.0L Vortec engine</b>	N/A	V-8	V-8	N/A	V-8	V-8	V-8	V-8	V-8
	Gross Vehicle (GVWR)	N/A	12,300	12,300	N/A	14,200	12,300	14,200	14,200	14,200
	Gross Combined (GCWR)	N/A	16,000	16,000	N/A	17,600	16,000	17,600	17,600	17,600
	<b>Sprinter Chassis with 3.0L diesel engine</b>	N/A	N/A	N/A	V-6	N/A	N/A	N/A	N/A	N/A
	Gross Vehicle (GVWR)	N/A	N/A	N/A	11,030	N/A	N/A	N/A	N/A	N/A
Gross Combined (GCWR)	N/A	N/A	N/A	14,530	N/A	N/A	N/A	N/A	N/A	
<b>MEASUREMENTS</b>	Wheel Base (Ford/Chevy) (in Inches)	138	138/139	158/159	170"	189/190	190/191	223"/224"	211"/212"	219/220
	Exterior Length (without ladder)	19'10"	22'8"	24'10"	24'10"	27'4"	29'9"	32'2"	31'1"	32'3"
	Exterior Height (with air conditioning)	10'3"	10'10"	10'10"	11'	10'10"	10'10"	11'5"	11'1"	10'10"
	Exterior Width (without mirrors)	91"	99"	99"	90"	99"	99"	99"	99"	99"
	Interior Height	80"	82"	82"	80"	82"	82"	82"	80"	82"
	Awning Size (manual/electric)	8'/-	12'/12'	15'6"/-	15'/15'	18'/18"	14'/14'	10'6"/10'6"	20'/20'	16'/16'
<b>CAPACITIES</b>	Fuel - Ford/Chevy (gallons)	40/-	37/35	55/57	26.4	55/57	55/57	55/57	55/57	55/57
	LPG (pounds)	40.9	40.9	40.9	68.2	40.9	40.9	40.9	40.9	40.9
	Fresh Water (gallons)	20.5	21	40	40	40	40	40	23	40
	Waste Water (gallons)	17	25	24.5	38	24.5	25	32	32	31
	Gray Water (gallons)	17	22	38.5	34	38.5	22	36	36	29
	Water Heater (gallons)	6	6	6	6	6	6	6	6	6
	Furnace (BTUs)	16,000	25,000	25,000	25,000	30,000	30,000	30,000	25,000	30,000
	Exterior Storage Capacity (cubic feet)	6.5	6	69	65	69	111	47	17	101

# 2010 Chateau Class C Standard & Optional Features

<b>BODY CONSTRUCTION/EXTERIOR</b>		Aluminum wheels (19G only)	S	Double door refrigerator (N/A on 19G)	S	China bowl toilet (N/A on 19G)	S
Fully welded tubular aluminum roof and sidewall cage construction	S	Wheel liners (N/A on 19G)	O	Decorative raised wood refrigerator panels	O	Skylight in shower	S
Vacu-Bond laminated roof, walls and floors with high-density block foam insulation	S	Upgrade dash insert (Ford & Chevy)	O	2-burner cooktop (19G & 23S only)	S	Shower with pleated shower curtain (19G only)	S
Slick fiberglass exterior	S	Infiniss™ Leather driver and passenger captain's chairs	O	3-burner high-output gas range top (N/A on 19G & 23S only)	S	Shower with glass door (N/A on 19G)	O
Exterior graphics package	S	Power driver seat (Ford chassis only)	O	Microwave oven	S	<b>SAFETY &amp; CONVENIENCE</b>	
Exterior graphics/partial paint package	O	Back-up monitor (Std. 31B)	O	3-burner high-output gas range top with oven (N/A on 19G & 23S)	O	Entry door with deadbolt lock	S
Exterior rear Mega Storage compartment (23A, 25C, 28A & 31P only)	S	<b>INTERIOR</b>		Convection microwave	O	Telephone jack	S
Rear Garage with cargo ramp (31D only)	S	Residential linoleum (galley, bath and entry way)	S	Laminate countertops	S	Smoke, LPG, carbon monoxide detector and fire extinguisher	S
Seamless roto-cast storage compartments	S	Linoleum throughout the coach (19G & 23S only)	S	Large single bowl sink (19G & 23S only)	S	Passenger seat belts in select areas	S
Flush mount radius luggage doors	S	Metal entry grab handle	S	Large double bowl sink	S	Child safety seat tether anchor in booth dinette (N/A in 23S & 25C)	O
Premium one-piece TPO roof (Energy Star approved)	S	Windshield privacy curtain	S	Flip-up countertop extension (23A, 23S, 31B & 31P only)	S	Slide-out battery tray (N/A 23S)	S
Manual patio awning	S	13,500 BTU roof air conditioner in front	S	Full extension metal drawer guides	S	<b>ELECTRICAL &amp; PLUMBING</b>	
Electric patio awning (N/A on 19G & 31B)	O	15,000 BTU roof air conditioner in front (N/A on 19G & 23S)	O	<b>ENTERTAINMENT &amp; ACCESSORIES</b>		Onan® Microquiet™ 4.0 gas generator (4000-watt)(N/A 23S)	S
Slide-out room awning	S	Ceiling ducted air conditioning system (N/A on 19G, 23S & 31D)	S	19" LCD television (19G only)	O	Onan® 3.6 LP generator (3600-watt) (23S only)	S
Roof ladder	S	Cinnamon Maple cabinetry	S	26" television in front overhead with electric swivel in cab-over (N/A on 19G)	O	Onan® 3.2KW diesel generator (3200-watts)(23S only)	O
Drop-down stairwell entrance step (N/A on 21RB & 23S)	S	Cherry cabinetry	O	Entertainment center with 26" LCD television and slide-out bunk (N/A on 19G, 31B and 31D)	O	30-amp service with shoreline power cord and battery disconnect switch	S
Manual entrance step (21RB & 31B only)	S	European styled curved cabinet doors (19G only)	S	Entertainment center with 32" LCD television and slide-out bunk (31B only)	O	Automatic generator transfer switch	O
Automatic electric entrance step (21RB & 31B only)(Std. on 23S)	O	Raised panel upper cabinet doors	S	Home theater system with DVD player and radio tuner (N/A on 23S)	O	Emergency start switch (N/A 23S)	S
Outside shower	O	Hardware with Brushed Nickel finish	S	19" LCD television in bedroom (N/A on 19G, 21RB, 23A and 25C)	O	Second auxiliary house battery (N/A 19G)	O
Rear Cargo Screen (31D only)	O	Day/night shades throughout	S	19" LCD television in the garage (31D only)	O	6-gallon DSI gas water heater	S
Rear exterior spotlights (31D only)	O	Barrel chair (19G, 23A, 25C and 31P only)	S	Dual LCD monitors with DVD and gaming inputs located in the bunk bed overhangs (31B only)	O	6-gallon DSI gas/electric water heater	O
<b>AUTOMOTIVE/COCKPIT</b>		Leatherette euro recliner with ottoman in place of barrel chair (23A, 25C and 31P)	O	Outside entertainment center includes a 26" LCD television, AM/FM stereo, CD/DVD player, iPod ready jack and speakers (31P only)	O	Water heater bypass system	S
3,500-lb. trailer hitch (19G & 23S only)	S	Fabric jackknife sofa (N/A on 19G, 23A, 23S and 25C)	S	Home theater system with DVD player and radio tuner (N/A on 23S)	O	Furnace heated and enclosed holding tanks (31B only)	S
5,000-lb. trailer hitch (N/A 19G & 23S)	S	Infiniss™ Leather jackknife sofa (N/A on 19G, 23A, 23S and 25C)	O	Coach radio system (23S only)	O	Electric holding tank heat pads (N/A on 31B)	O
AM/FM dash radio with large buttons, CD player and weather band tuner	S	Infiniss™ Leather hide-a-bed sofa with air mattress (31P on a Ford chassis only)	O	Television antenna and booster	S		
3-point seat belts for driver and passenger	S	Booth dinette (N/A on 23S & 25C)	S	<b>BEDROOM/BATHROOM</b>			
Power window and door locks	S	Fabric U-shaped dinette (23S & 25C only)	S	Queen-size bed with innerspring mattress (N/A on 19G & 21RB)	S		
Deluxe exterior mirrors (N/A on 23S)	S	Infiniss™ Leather U-shaped dinette (23S & 25C only)	O	Bunk beds in hallway slide room (31B)	S		
Deluxe heated remote mirrors (N/A on 19G)(Std. on 23S)	O	Fantastic® fan in kitchen area	O	Bedsprad and pillow shams (N/A on 19G & 21RB)	S		
Aluminum running boards (N/A on 23S)	S	Fantastic® fan in overhead bunk (N/A on 19G & 23S)	O				
Spare tire (N/A 19G)	S	<b>GALLEY</b>					
		Single door refrigerator (19G only)	S				



VEHICLE LOADING: Every effort has been made to provide the greatest number of options for the recreation vehicle owner. Along with these choices comes the responsibility to manage the loads that are imposed by the choices so that they remain within the manufacturer's specified chassis weight limits. Do not overload the recreation vehicle.

IMPORTANT: Towing capacity may vary by chassis model, floorplan, options and loading of the vehicle. This may result in a towing capacity which is less than the maximum capacity of the hitch. Do not exceed the vehicle's Gross Combined Weight Rating (GCWR), or

the hitch rating. A separate functioning brake system is required for any towed vehicle or trailer weighing more than 1,000 lbs. (450 KG) when fully loaded. Liquid capacities and weights are approximations only.

WARNING: This information is intended as a guide only. Weights of individual vehicles may vary. Consult your owner's manual and weight sticker affixed to each vehicle for complete loading, weighing, and towing instructions.

WARRANTY: The vehicles are provided with a one-year, 15,000-mile limited warranty and a three-year, 45,000-mile limited structural warranty. Chassis,

component part and appliance manufacturers issue limited warranties covering those portions of the vehicle not covered by the limited warranties issued by Four Winds International. To learn what portions of the vehicle are excluded from coverage under the limited warranties issued by Four Winds International, please contact your selling dealership or Four Winds International directly, or review the warranty packet inside the vehicle.

Product information, specifications, and photography in this brochure were as accurate as possible at time of printing. Photographs may contain some features

that are optional on your vehicle. Since we continually strive to improve our products, actual products may differ. The manufacturer reserves the right, at any time, to make changes in product design, materials, component specifications and pricing, without notice. All capacities are approximate and dimensions are nominal. Some features or options may be different or unavailable in Canada.