



# Big Country



Visit HEARTLAND on:



*Big Country*  
BY HEARTLAND



*People who own Big Country RVs make 27% more friends. Adjust your life accordingly.*



King Bed  
(select models)



(select models)



(select models)



3250TS

# Big Country

BY HEARTLAND



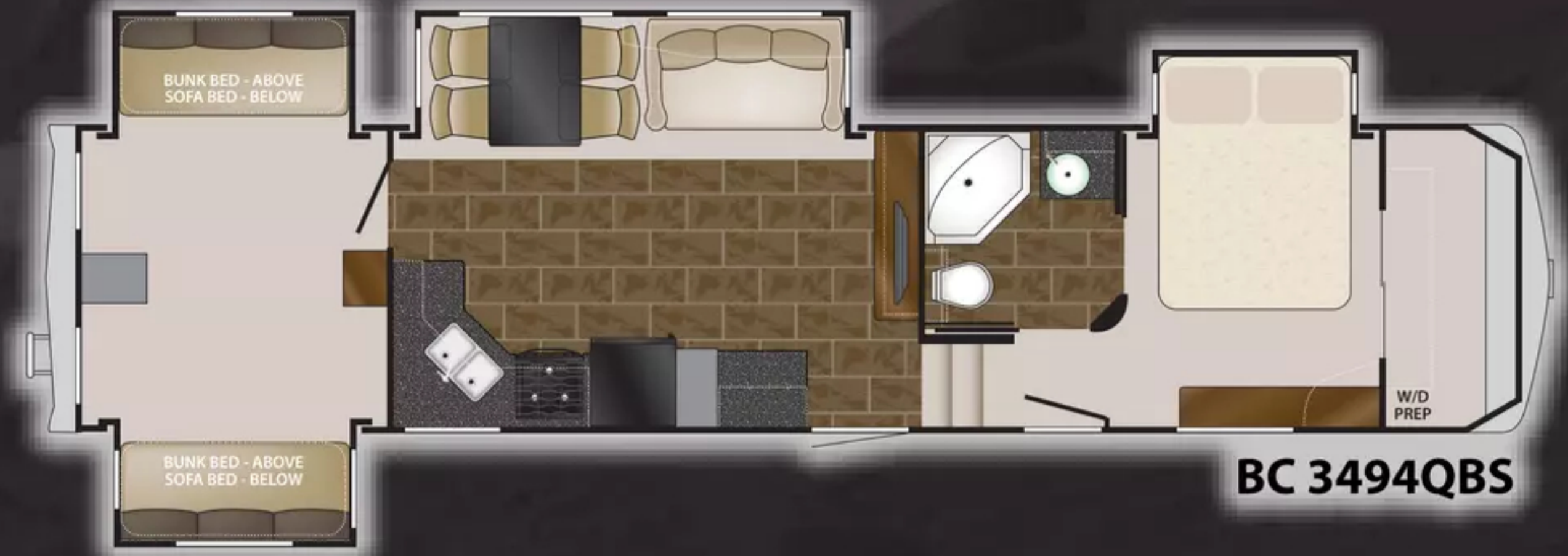
**BC 2950RK**

Length: 32' 10"    Dry: 9,980    GVWR: 14,000  
 Height: 12'11"    Hitch Weight: 2,268



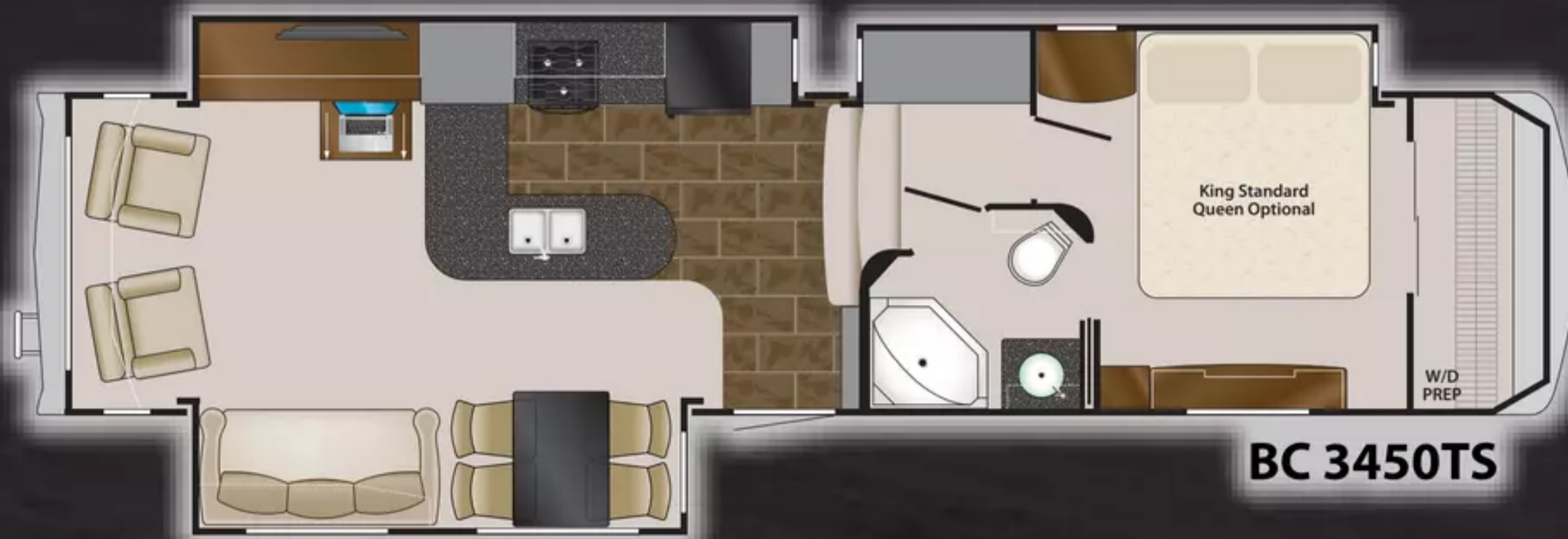
**BC 3250TS**

Length: 33' 2"    Dry: 10,590    GVWR: 14,000  
 Height: 12'11"    Hitch Weight: 1,920



**BC 3494QBS**

Length: 38' 10"    Dry: 11,900    GVWR: 15,000  
 Height: 12'11"    Hitch Weight: 1,970



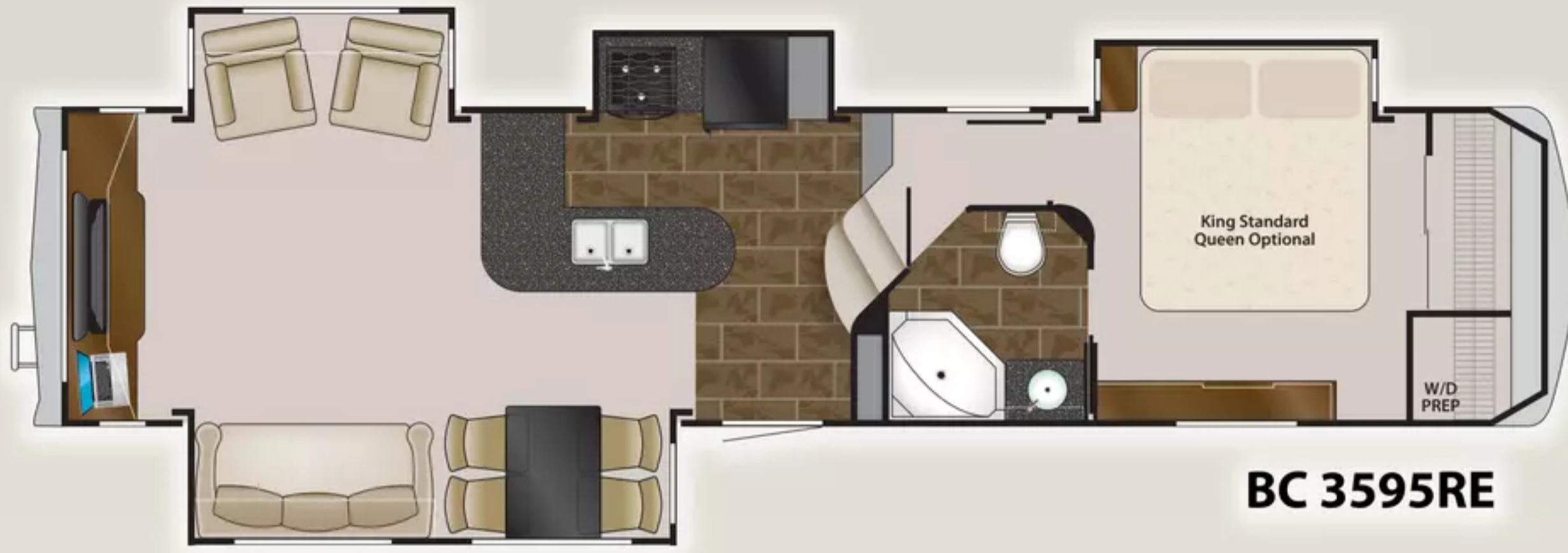
**BC 3450TS**

Length: 38' 4"    Dry: 11,950    GVWR: 15,000  
 Height: 12'11"    Hitch Weight: 2,200



**BC 3550TSL**

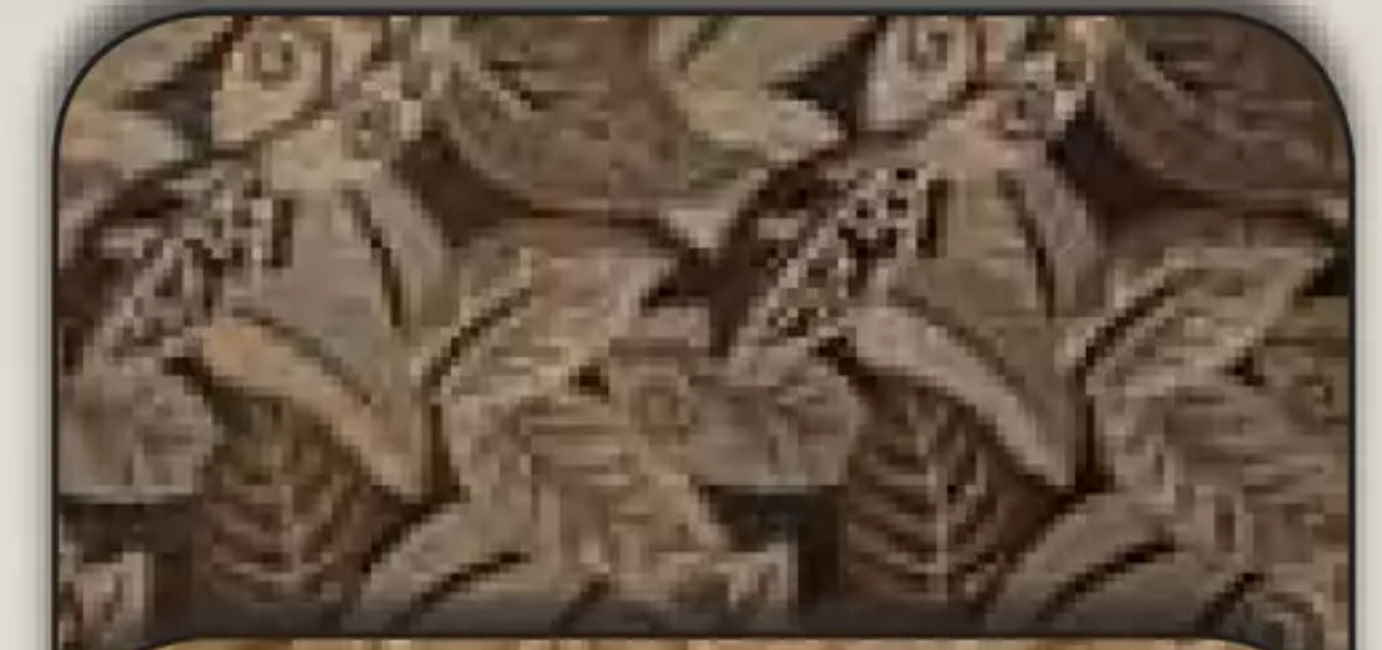
Length: 38' 1"    Dry: 11,780    GVWR: 15,000  
 Height: 12'11"    Hitch Weight: 2,028



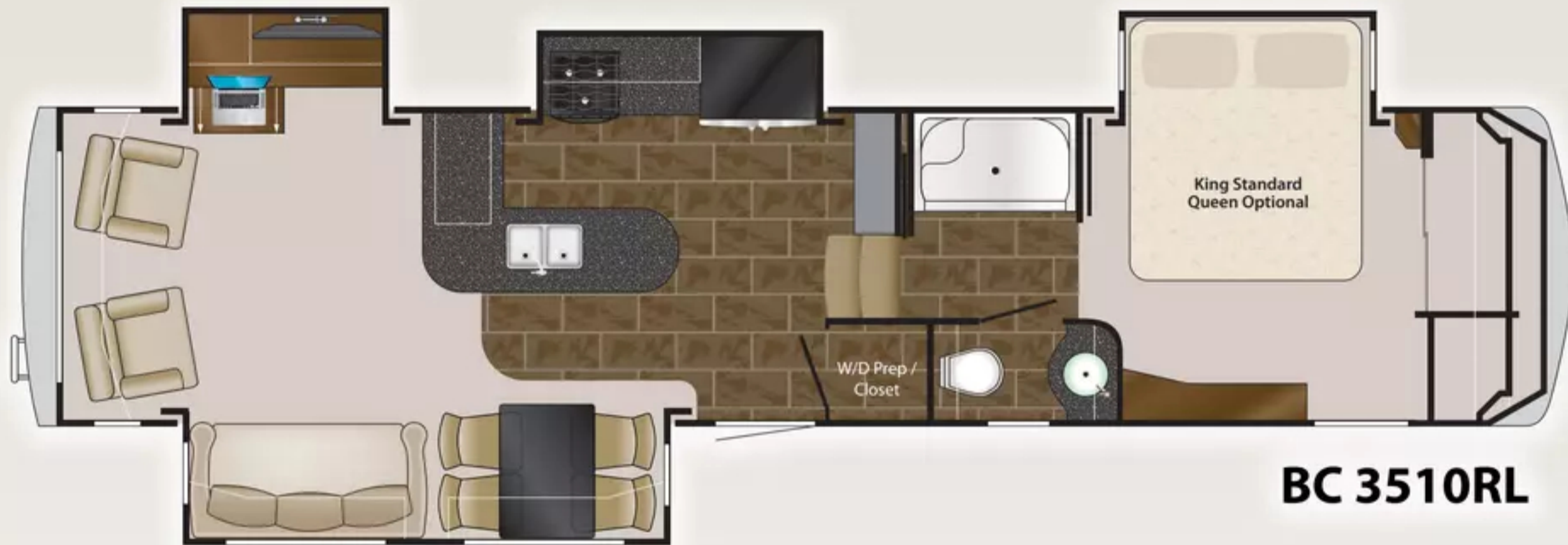
**BC 3595RE**

Length: 38' 9"    Dry: 12,287    GVWR: 15,500  
 Height: 12'11"    Hitch Weight: 2,190

**Bahama Berry**



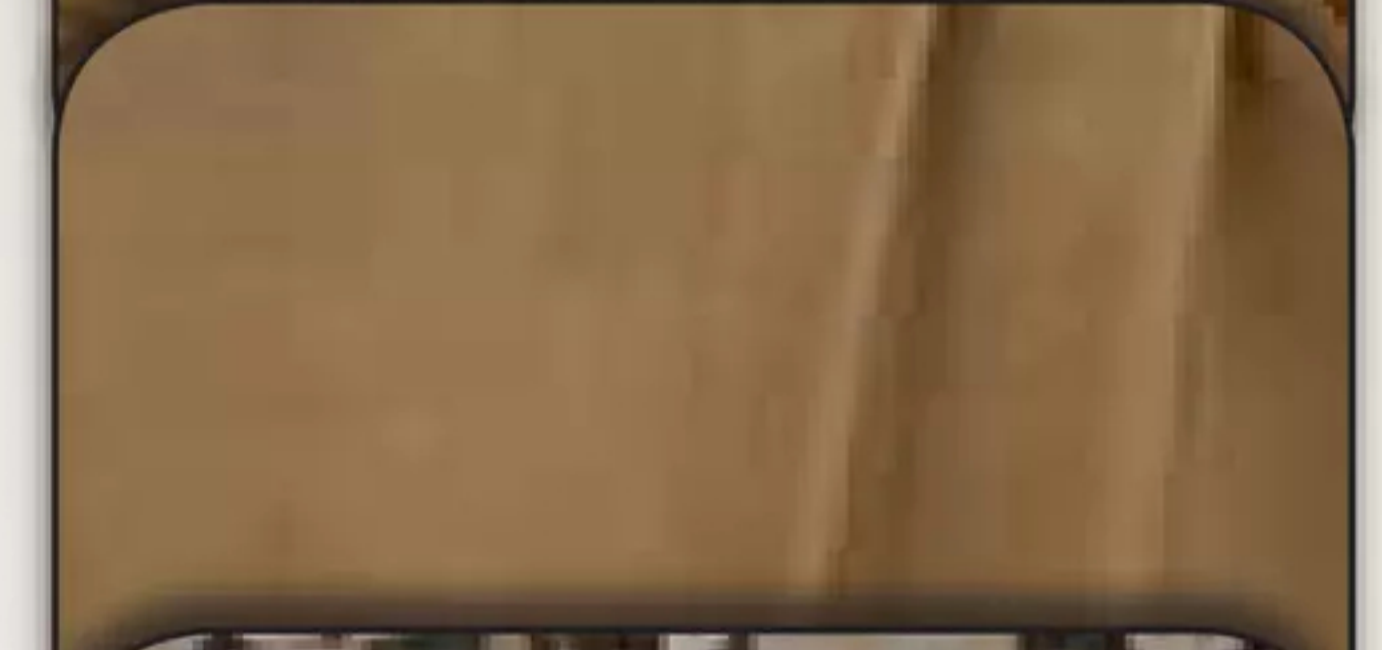
**Butterscotch**



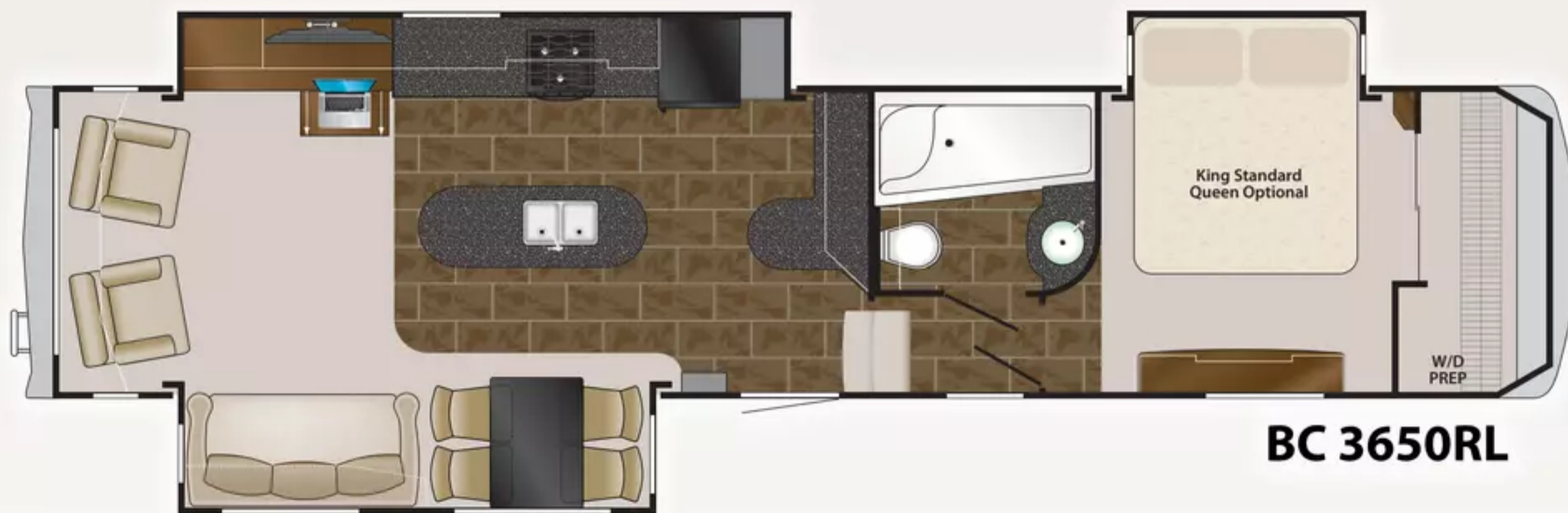
**BC 3510RL**

Length: 38' 1"    Dry: 12,180    GVWR: 15,500  
 Height: 12'11"    Hitch Weight: 2,945

**Bronze**

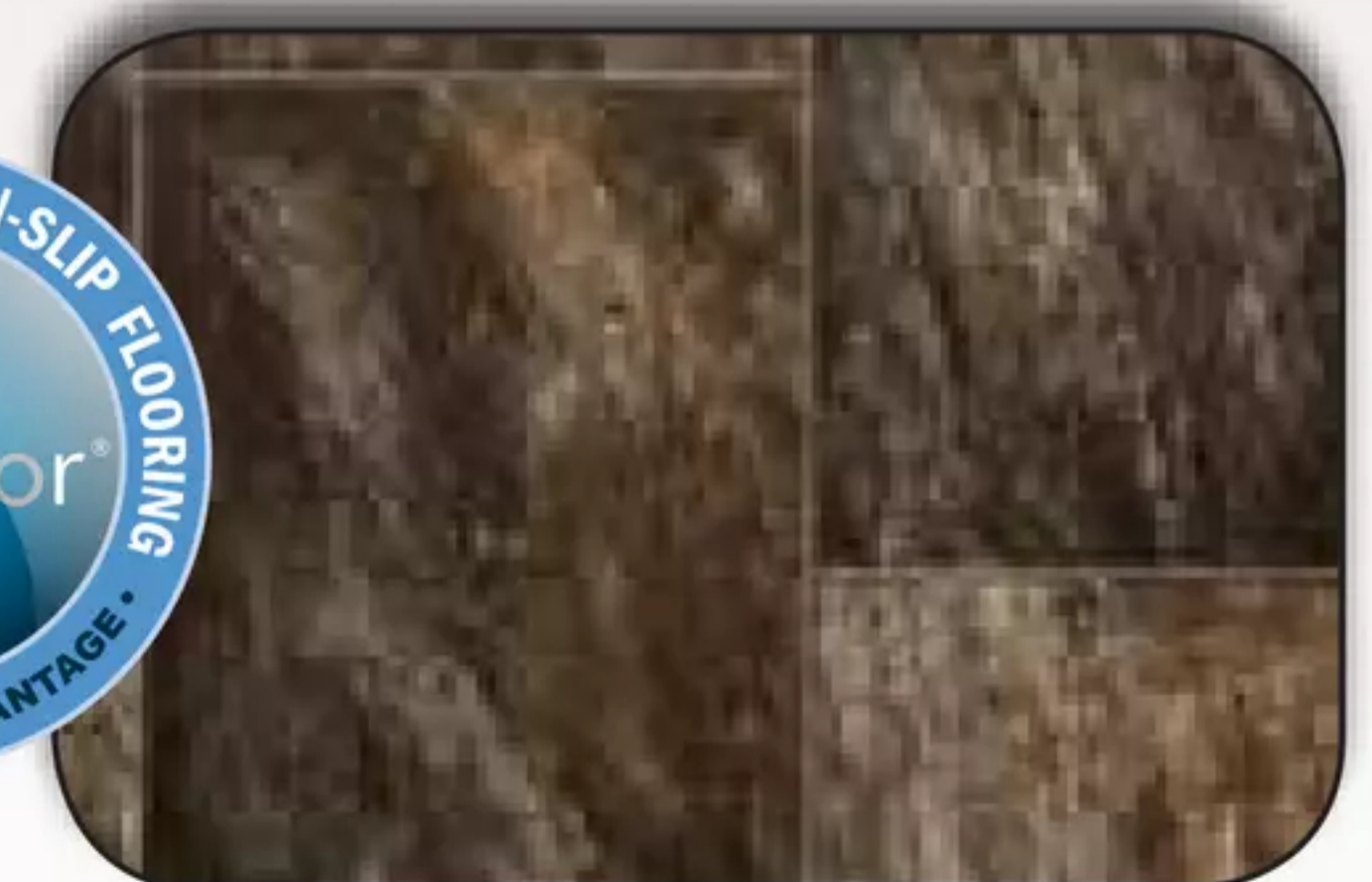


**Pebble**



**BC 3650RL**

Length: 39' 6"    Dry: 11,900    GVWR: 15,500  
 Height: 12'11"    Hitch Weight: 2,350



Note: Overall Length defined as tow point (Ball coupler for travel trailers / King pin for 5th wheel trailers) to rear bumper. It does not include the rear ladder. Add 9" w/ Extended Pin Box

*Big Country Owners are 99% more satisfied.  
Adjust your life accordingly.*

*Big Country*  
BY HEARTLAND



#### WIRELESS REMOTE CONTROL SYSTEM

- Secondary wireless control system on key fob
- Controls slide rooms, electric awning, front and rear jacks, and outside lights

#### HAND CRAFTED CABINETRY

- All Cabinet Frames are Pre-Drilled, and screwed together - not stapled
- Deluxe Ball-Bearing Drawer Guides
- European Style hidden hinges

#### UNIVERSAL DOCKING CENTER

- 12V light
- Tank drain pull controls with enclosed gate valves
- Hot / Cold shower sprayer
- Black Tank Flush
- Water hook up – city and tank fill
- RG-6 coaxial cable hook up
- Dual Satellite Hook Up (Roof OR Tri-Pod)
- Winterization valves and water heater bypass

#### BIGGEST EXTERIOR STORAGE In Class:

- Over 145 Cubic Feet of Storage!
- Large Insulated Slam Style Access Doors on compartments
- Unobstructed Pass-Through Design
- 110V Outlet & Cable TV Plug
- 12V Trunk Lights

#### BEDROOM

- Large Walk-In Front Wardrobe
- Two Windows in Slide for Better Air Flow
- 6'-4" full profile Bedroom Ceiling Height Throughout
- Reading Lights Over Bed
- Speakers in Bedroom

#### EXTERIOR FEATURES

- Exterior Speakers
- Jensen™ 12V Sound System
- 2 Molded Security Lights
- Light at Entry Step

#### LAMINATED FLOOR CONSTRUCTION

- Strong Aluminum Framing
- Block Foam Insulation
- 3/8" Seamless Decking (No squeaks)
- Thermo-Board Luan on the Bottom

#### LAMINATED ROOF CONSTRUCTION

- 5" Laminated - Block Foam with Aluminum framing
- Fully walkable Roof
- One-Piece Seamless EPDM Rubber Roof

#### LAMINATED WALL CONSTRUCTION

- Metallic high gloss platinum exterior fiberglass
- Double-Welded Aircraft Quality Aluminum throughout

#### FRAME & LANDING GEAR

- Strong 10" I-Beam Frame w/Drop Frame
- (12" I-Beam on 3510RL / 3450TS / 3494QBS / 3650RL)
- Front Landing Jacks with Spring Loaded Snap Pins
- Heavy Duty Rear Stabilizer Jacks

#### TIRE/AXLES/SUSPENSION

- Heavy-Duty E-Rated 16" Tires
- (G-Rated on 3510RL / 3450TS / 3494QBS / 3550TSL / 3650RL)
- EZ Flex Suspension with shocks
- Aluminum rims
- 6,000 lb. Axles
- (7,000 lb. axles on 3510RL / 3450TS / 3494QBS / 3550TSL / 3650RL)
- 2" x 12" Brakes on each hub
- ABS Fender Skirts

#### UNDERBELLY

- Seamless Corrugated Underbelly Material
- Heated, enclosed, and insulated underbelly, holding tanks and gate valves

#### PLUMBING

- Color-Coded Plumb-PLEX™ Water Lines

#### TANK SIZE & LP GAS SYSTEM

- 75 Gallon Fresh Water system
- 90 Gallon Gray and 45 Gallon black wastewater tanks (3550TSL 90 Gallon black water tank)
- (2) 30# LP bottles

#### POWER

- 60 AMP/12V DC Power Converter with charge wizard
- 50 Amp Detachable Marine Cord
- 110V Exterior Electrical Receptacles

#### HEATING

- 35,000 BTU Furnace
- (40,000 on 3510RL / 3450TS / 3494QBS / 3650RL)
- Heated Stool Room

#### COOLING

- 15,000 BTU ducted Air Conditioner
- Air Conditioned Stool Room

#### INSULATION VALUES

- Walls - R9 Insulation
- Roof – R23 Insulation

- Floor - R35 Insulation
- Slide Room Floor - R38 Insulation

#### MAIN SLIDE ROOM

- 6'-5" Ceiling Height
- Hydraulic Operating System with manual override
- Double Squeegee Seals
- w/One-Piece Weather-proof Floor Pan
- Cabinets Above Sofa

#### LIVING ROOM

- Decorative Glass Inserts in Overheads
- 110V Ceiling Fan with Light Kit
- Vacation style wood blinds

#### FOR YOUR PROTECTION & SAFETY

- Smoke Detectors on Ceiling
- Fire Extinguisher by Entry Door
- LP Gas & CO2 Detectors inside Unit
- Exterior Security Flood Lights
- Break Away cable Switch
- Deadbolt Lock on Entrance Door
- 120V GFI Protected Outlets
- Fire Escape Windows
- All Safety Glass Windows
- 12V Hitch Light

#### KITCHEN

- Room for Large Trash Can
- Residential Sized Cabinets with euro style hidden hinges
- Residential Size under mounted Stainless Steel Sink
- Deep Residential Size Drawers
- Large, Deep Pantry w/Adjustable Shelves plus pull out pantries

#### BATH AREA

- 6'-4" Bath/Bed Ceiling Height Throughout
- Large Medicine Cabinet
- Vanity Light Bar and Wall Mirrors

#### SHOWER

- One-Piece Fiberglass Shower
- Glass Shower Surround
- Adjustable Shower Head/Soap Dish
- Clear Skylight over Shower

#### COMMODOE ROOM

- Power Roof Ventilation
- Porcelain Commode w/Foot Flush
- Storage Shelf
- 110V Outlet for Night Light

#### OPTIONS

##### EXTERIOR –

- Electric Rear Jacks
- ToyLoc
- (3494 only) Exterior auxiliary refrigerator
- Slide toppers
- Generator preparation
- 5.5KW Onan Generator (prep required)

##### INTERIOR –

- Booth Dinette IPO Free Standing dinette
- Flip ladder/desk chair
- (2950 only) 2 Recliners IPO J-Sofa
- 19" TV in bedroom
- Queen bed option in place of King bed (3450TS, 3510RL, 3595RE, 3650RL)
- Central Vacuum
- Leather chairs in place of standard fabric chairs

##### APPLIANCES –

- Electric Fireplace (N/A on 3494QBS, 2950RK)
- convection microwave upgrade from standard microwave
- 4 door refer with icemaker (3450TS, 3595RE, 3650RL)
- Splendide stackable OR combo washer and dryer (N/A 2950RK)

##### HEATING & COOLING –

- 2nd A/C 13,500 BTU low profile and wall thermostat in bedroom
- Dual Pane Windows

##### BIG COUNTRY PACKAGE -

Aluminum Framed Laminated Floor & Roof, High Gloss Metallic sidewalls, Hydraulic Slide System, Wood Blinds, Wrought Iron Window Treatments, "Beau Flooring", Universal Docking Center, Patent Pending 88 Degree Turning Radius Front Cap, 16" Aluminum Rims, Molded Rear Fiberglass Cap, ABS Hitch Cover, HDTV, Extended Gutter Spouts, Roof Ladder, One Piece Fiberglass Shower w/Skydome, Mega Bath (on select models, Spare Tire and Carrier, ELECTRIC Awning, 12 Gallon Gas/Electric DSI Water Heater, Free Standing Dinette w/4 Chairs, Sofa Air Bed, Courtesy Light Kit, Ceiling Fan w/Lights, Washer/Dryer Prep (on select models), Fantastic Fan w/Rain Sensor in Living Room, Outside Speakers, Fold-Away Entry Handle, Black Tank Flush, Porcelain Toilet, E-Z Lube Hubs, Extended Hitch Pin, 22" Oven, EZ Flex suspension, Dexter axles, 50 amp electric service with detachable cord, Dual Satellite Prep, TV Antenna w/Booster, 2 Rocker/ Recliners (select models), Stainless Steel Kitchen Sink



Heartland Recreational Vehicles  
 1001 All-Pro Drive • Elkhart, IN 46514 • 574-262-5992

### Community. Convenience. Close-to-home.

Where you purchase your recreational vehicle is ultimately your decision but Heartland urges you to consider buying at your local dealer. Dealers are part of your community, providing jobs and contributing to your local economy. These dealers are under obligation to provide warranty service for products they sell, but are not legally required to service products purchased from other dealers. At some point, you may need to return to the dealer you buy from - why not stay close to home? After all, home is where your Heartland is!

### BENEFITS OF PURCHASING YOUR RV LOCALLY:

- You enjoy valuable relationship building with Dealer Representatives, close to your home, who will explain the features and benefits of the product.
- You receive a full product orientation prior to delivery, which includes hands-on directions for many of the coach's systems and functions. You are also introduced to the Dealership's Service/Parts/Warranty personnel who are at the ready to help you with any issues you may encounter, now and in the future.
- You enjoy customer PRIORITY. Dealerships generally service their purchasing customers first - others may experience long delays and miss opportunities to use their RV. What is it worth for you to have a dealership's full attention and motivation to satisfy you when you need service - in a timely manner?
- Valuable TAX dollars and jobs stay in YOUR community which pays for your roads, schools, police and fire departments.

### DON'T UNDERESTIMATE CUSTOMER SERVICE AND PERSONAL CARE!

For Canadian Residents: If you purchase an RV out-of-country, there are additional fees, taxes and inspections that must be met before bringing your product home. Your local Canadian dealers are experts in these provisions.

Your Authorized Heartland Dealer:

**www.HEARTLANDRVS.com**

**Experience:**  
 Product Walk-Through Videos  
 Side By Side Comparisons  
 Feature Videos • Photo Galleries  
 Virtual 360° Tours  
 Detailed Floor Plans  
 News • Testimonials  
 Customer Service  
 Service Locator  
 Owners Club • More  
 at our Informative Web Site

# Big Country

BY HEARTLAND

**VENDOR 800#**  
**CALL DIRECT FOR DIRECT RESULTS!**  
**TOLL FREE & WARRANTY PHONE NUMBERS:**

In an effort to offer the best possible customer service, we are providing you with the warranty phone numbers of our most common vendor partners so you may work directly with them to more quickly handle service issues. Check the brand name on the product to determine the correct vendor.

LIPPERT	1.866.524.7821
(Furniture, Awnings, Jacks, Pkg. Slide-Out Systems)	
DOMETIC	1.800.544.4881
(Refrigerators, Air Conditioners, Awnings, Composites)	
NORCO	1.800.347.2232
(Elect. Slide-Out Systems)	
SHUR-FLOW	1.800.854.3218
(Water Pumps)	
THETFORD	1.800.543.1219
(Compartments)	
KIB	1.800.250.7051
(Monitor Panels)	
TREDIT TIRE	1.800.537.2925
(Showering, Wheelchairs, Tires and More)	
A.S.A.	1.800.688.3135
(Climate Control & Video Products, Electronics)	
PROGRESSIVE	1.269.781.4241
(Power Converters) Not toll free.	
CHENO	1.877.294.8997
(Power Converters)	
ATWOOD	1.866.869.3118
(Furniture, Water Heaters)	
SUBURBAN	1.423.775.2131
(Furniture, Water Heaters) Not toll free.	
SWAN	1.800.228.7926
(Black Tank Flush System)	
B & B	1.574.259.7838
(Black Tank Flush System) Not toll free.	

This list is provided for your benefit so that you can quickly speak to the product manufacturer directly. For complete details regarding Heartland's Network of Authorized Dealers and our assistance in locating your nearest dealer or authorized service center, visit us at Heartland Customer Service at 877.262.8552.

**Call Direct,  
 Fast Results!  
 800# LABEL  
 IN EVERY HEARTLAND**

We provide a convenient sticker in each coach listing the warranty phone numbers of our most common vendor partners so that if you choose to, you may work directly with them to more quickly resolve issues or obtain replacement items.



**HEARTLAND  
 CUSTOMER SERVICE  
 WE'VE GOT YOUR BACK!**

Over 40 men and women located in a dedicated facility servicing our customers every day. With a dealer network of over 400 locations across the U.S. and Canada, you're never far from an authorized Heartland dealer.

Product information is as accurate as possible as of the date of publication of this brochure. Due to Heartland's commitment to continuous product improvement - floorplans, materials, components, features, specifications, options, etc. are subject to change without notice or obligation to Heartland Recreational Vehicles. Product information and specifications apply to coaches beginning with serial number 231920  
**Tow Vehicle Caution:** Owners of Heartland recreational vehicles are solely responsible for the selection and proper use of tow vehicles. All customers should consult with a motor vehicle manufacturer or their dealer concerning the purchase and use of suitable tow vehicles for Heartland products. Heartland disclaims any liability or damages suffered as a result of the selection, operation, use or misuse of a tow vehicle. Heartland's limited warranty does not cover damage to the recreational vehicle or the tow vehicle as a result of the selection of the tow vehicle.  
 See your nearest Heartland dealer to review a current model. 25,000 Litho 1/11