

2012

Floor Plans

Nomad®

84" Wide Retro Travel Trailers

96" Wide Joey Select Travel Trailers

90" & 96" Wide Joey Select Fifth Wheels

96" Wide Park Trailers

102" Wide Destination Travel Trailers



Your local ***Nomad*** dealer is:

SKYLINE®
BRINGING AMERICA HOME. BRINGING AMERICA FUN.

Effective 2011

Dare to Compare

	<u>SKYLINE</u> [®]	<u>Other Brand</u>
3-2-1 Warranty	✓	_____
Individually Weighed — <i>Certified</i> — Posted on Exterior	✓	_____
Rain Tunnel Tested	✓	_____
Simulated Road Tested (Shake Simulator)	✓	_____
Stile & Rail Cabinet Construction on Upper & Lower Cabinets	✓	_____
Seamless One-Piece EPDM Roof with Manufacturer's 12 Year Limited Warranty (Excludes 84" Wide Travel Trailers)	✓	_____
Seamless Aluminum Roof (84" Wide Travel Trailers Only)	✓	_____
Radius Clamp-Ring Windows	✓	_____
Radius Sealed Outside Compartment Doors	✓	_____
5/8" Tongue & Groove Floor	✓	_____
Cambered Chassis	✓	_____
R-7 Insulation	✓	_____
Larger-Capacity Holding Tanks	✓	_____
Upgraded Name Brand Appliances	✓	_____
60 Years in Business	✓	_____



Since 1951, we've been building products that measure up to the expectations of our customers. From the very beginning, we've understood that our customers come first. You're the reason we're in business and every member of the Skyline team is committed to bring you nothing less than the best.

This commitment has earned Skyline its nationwide reputation for leadership and uncompromising integrity. Our designers, engineers, and production people work as a team to build RVs that meet your needs. The best RVs at the best prices. Each backed by a straightforward one-year full warranty and a nationwide customer service program that is short on red tape and long on results.

Skyline is a solid corporate citizen having no corporate debt and a strong cash position. For our customers, this means that Skyline has the financial muscle to stand in back of its products and you can count on the fact that Skyline will be around if you ever need us.

For us at Skyline, "*Bringing America Home. Bringing America Fun.*" is more than a slogan. It is a statement of our responsibility to a country that has been good to us. It is a pledge to extend our record of leadership, to continue the long tradition of superior service, and to strengthen the trust placed in us by the customers we are privileged to serve. It is our determination to serve America and its people with quality, affordable recreational vehicles for many years to come.



**Limited Production Product. Subject to Dealer's Available Inventory.*

Interior

Cabinets

- High Pressure Laminate Counter Tops
- Maple Cabinet Color Choices

Decor

- Color-Coordinated Designer Interiors
- Embossed Vinyl Flooring
- Padded Dinette Seat Cushions
- Mini Blinds at All Windows Except Bunks

Kitchen & Living Room

- 3 cu. ft. Dometic® Gas / Electric Refrigerator
- Wedgewood® 2 Burner Range Top
- 0.7 cu. ft. Dometic® Microwave Oven w/Turntable & Clock
- Acrylic Kitchen Sink w/Faucet
- 12 Volt Demand Water Pump
- 16,000 Btu Furnace
- 5 MBtu Air Conditioner
- 35 amp 12 Volt Power Converter w/120 Volt Load Center
- Six Gallon Gas Water Heater
- TV Antenna w/Living Area Jack

Bath

- ABS Tub w/Tub Faucet, Shower Hose & Head
- Shower Curtain
- Hand Flush Thetford Toilet
- Towel Ring & Toilet Paper Holder

Exterior

Roof Construction

- Seamless One-Piece Aluminum Roof
- Awning Drip Rail & Down Spouts

Wall Construction

- Wall Studs on 16" Centers (Maximum)
- Steel Strap Reinforcement on Walls for Superior Durability
- R-7 Settle-Resistant Insulation
- Twist Locks on All Storage Doors
- Clamp Ring Radius Corner / Dark Tint Safety Glass Windows
- Patio Convenience Light
- Radius Entry Door w/Screen
- Assist Handle at Entry Door

Chassis Construction

- Cambered Tubular Steel Chassis w/Steel Outriggers
- Battery Rack
- Chassis-Mounted Entry Step
- Electric Brakes at All Wheels
- Spare Tire & Carrier
- Safety Chains & Breakaway Safety Switch
- Two Stabilizer Jacks
- Sidewinder Tongue Jack w/Foot

Floor Construction

- 5/8" Tongue & Groove Floor Decking
- Tightly Sealed Woven Polyethylene Underbelly

Features

- Single 20 lb. LP Propane Tank
- Holding Tanks w/Drain Outlet
- Rear Bumper w/Sewer Hose Carrier
- 10' A&E® Sunchaser Side Awning

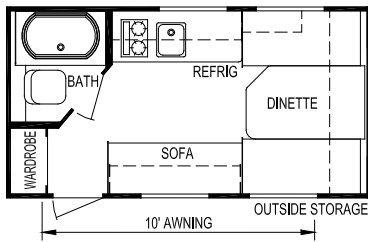
Security & Safety

- Smoke Detector
- Propane Leak Detectors
- Carbon Monoxide Alarm
- Flush Door Latch w/Integral Dead Bolt Lock
- Fire Extinguisher

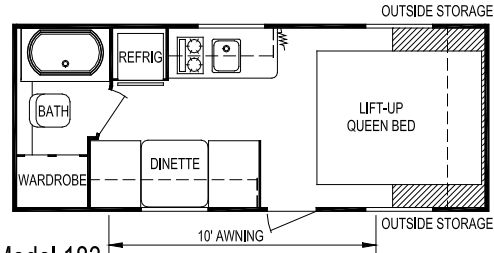
Popular Options

- AM/FM/CD Stereo w/4 Speakers
- (2) Outside Speakers

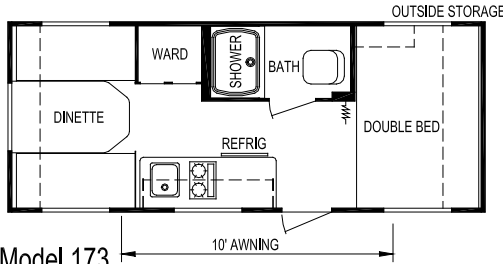




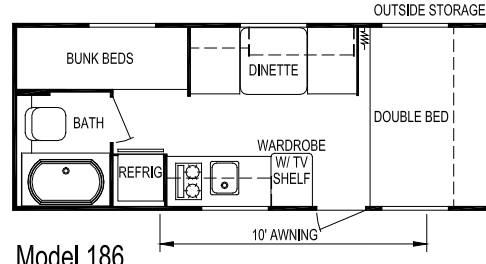
Model 140



Model 183



Model 173



Model 186

Specifications

Model	140	173	183	186
Weights Unloaded Vehicle Weight (see Note 2)	2,025	2,625	2,725	2,725
Dry Hitch Weight	325	375	325	325
Dry Axle Weight	1,700	2,250	2,400	2,400
GVWR (Total Capacity of Trailer)	2,850	3,850	3,850	3,850
Carrying Capacity (see Note 2)	750	1,125	1,000	1,025
Accommodations Sleeping (standard / optional)	3	4	3	5
Bed Size	N/A	54" x 80"	60" x 74"	54" x 80"
Second Bed Size	N/A	N/A	N/A	(2) 28" x 75"
Dinette Size	52" x 80"	52" x 80"	30" x 76"	30" x 75"
Sofa	22" x 59"	N/A	N/A	N/A
Measurements Exterior Length (see Note 3)	15'-10"	20'-1"	20'-4"	20'-6"
Exterior Width (see Note 3)	84"	84"	84"	84"
Exterior Height (see Note 3)	8'-2"	8'-4"	8'-4"	8'-4"
Interior Height	73"	73"	73"	73"
Capacities Fresh Water System (gallons)	17	17	27	27
Gray Water Tank (gallons)	15	15	15	15
Black Water Tank (gallons)	9	9	9	9
Air Conditioner Size (Btu)	5,000	5,000	5,000	5,000
Awning Size	10'	10'	10'	10'
Convertor Size (amps)	35	35	35	35
Furnace Rating (Btu)	16,000	16,000	16,000	16,000
Propane Gas Capacity (pounds)	20	20	20	20
Tires	ST185/80R13-C	ST205/75R14-C	ST205/75R14-C	ST205/75R14-C
Water Heater (gallons)	6	6	6	6

Notes

- (1) All weights, dimensions, and capacities shown are approximate values.
- (2) Unloaded vehicle weight and carrying capacity will vary depending upon optional equipment. Full propane tanks are factored into carrying capacity. Skyline weighs every unit at the factory. See trailer weight information label located inside the front entry door for specific unloaded vehicle weight and cargo carrying capacity.
- (3) Dimensions stated to industry standards. Exterior length includes approximately a four foot hitch on travel trailers. Exterior height includes air conditioner, if installed. Exterior width does not include the width of the awning, if installed.

Interior

Cabinets

- Hardwood Frame Cabinet Doors
- Full Extension Ball Bearing Drawer Guides
- High Pressure Laminate Counter Tops
- Maple Cabinets

Decor

- Color-Coordinated Designer Interiors
- Embossed Vinyl Flooring
- Carpet & Pad as Shown on Floor Plans
- Extra Padded Dinette Seat Cushions w/Bolsters in Accent Fabric
- Mini Blinds at All Windows Except Bunks
- Decorative Glass Insert Cabinet Doors in Select Areas

Kitchen & Living Area

- Dometic® Double Door Refrigerator
- Wedgewood® 3 Burner Range w/Oven & Piezo
- Radius Counter Tops
- Power Range Hood w/Light
- Large Carousel Dometic® Microwave Oven w/Clock
- Acrylic Kitchen Sink w/High Rise Faucet
- Decorative Wall Border in Kitchen & Living Area
- Systems Monitor Panel
- 25,000 Btu Ducted Furnace
- 13.5 MBtu Roof Ducted Air Conditioner w/Wall Thermostat
- 120 V to 12 V Power Converter
- TV Antenna w/Booster
- Park Cable Hookup for TV
- 12V AM/FM/DVD/MP3 Stereo w/iPod Connection, Interior & Exterior Speakers
- Six Gallon Gas/DSI Water Heater

Bedroom & Bath

- Color-Coordinated Quilted Bedspread
- Deluxe Headboard
- Lift-Up Bed Storage w/Gas Piston Struts
- Evergreen® Mattress
- ABS Tub w/ABS Wall Surround
- China Foot Flush Toilet
- Deluxe Medicine Cabinet w/Mirror
- Towel Ring & Toilet Paper Holder
- Skylight Over Tub
- Power Bath Vent

Exterior

Roof Construction

- Tapered Roof Construction to Promote Water Runoff
- Seamless One-Piece Roof w/Manufacturer's 12-Year Warranty
- Awning Drip Rail w/Extra Long Down Spouts

Wall Construction

- Wall Studs on 16" Centers (Maximum)
- Steel Strap Reinforcement on Walls for Superior Durability
- R-7 Settle-Resistant Insulation
- Twist Locks on All Storage Doors
- Clamp Ring Dark Tint Safety Glass Radius Corner Windows
- Patio Convenience Light
- Radius Entry Door w/Screen
- Assist Handle at Entry Door

Chassis Construction

- Cambered I-Beam Steel Chassis w/Steel Outriggers
- Battery Rack
- Electric Brakes at All Wheels
- Black Rotocast Wheel Wells (Most Models)

- Safety Chains & Breakaway Safety Switch
- E-Z Lube Hubs on Axles
- Four Stabilizer Jacks

Floor Construction

- 5/8" Tongue & Groove Floor Decking
- Tightly Sealed Woven Polyethylene Underbelly

Features

- Two 30 lb. LP Propane Tanks w/Auto Changeover
- Holding Tanks w/Drain Outlet
- Rear Bumper w/Sewer Hose Carrier
- Water Heater Bypass

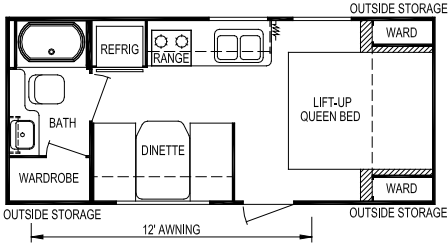
Security & Safety

- Smoke Detector
- Propane Leak Detectors
- Carbon Monoxide Alarm
- Flush Door Latch w/Integral Dead Bolt Lock
- Fire Extinguisher

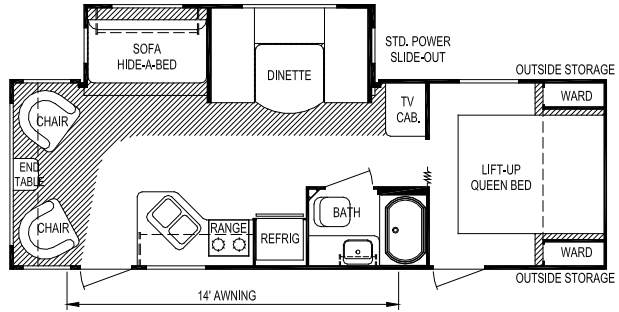
Popular Options

- Power Side Awning
- Aluminum Wheels
- Camp Kitchen (Select Models)
- Fireplace (Select Models)
- Night Shades
- Outside Shower
- 26" Vizio® LCD TV
- Gas/Electric/DSI Water Heater
- **Laminated Sidewalls, Including:**
 - Welded Aluminum Frame Sidewalls w/Block Foam Insulation, Steel Cabinet Backers, Luan Exterior Panel Under Fiberglass Exterior, and Luan Interior Panel All bonded Together.
 - Fiberglass Exterior On Front & Rear Walls

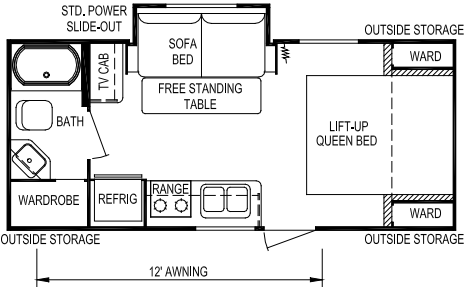




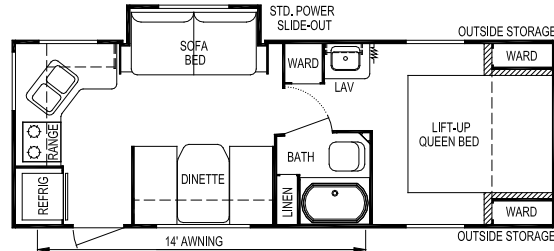
Model 196



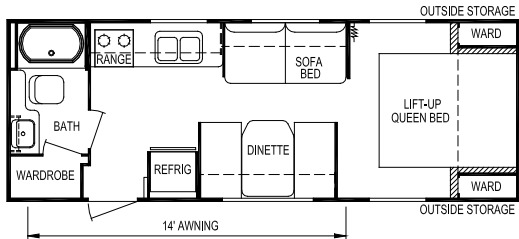
Model 258



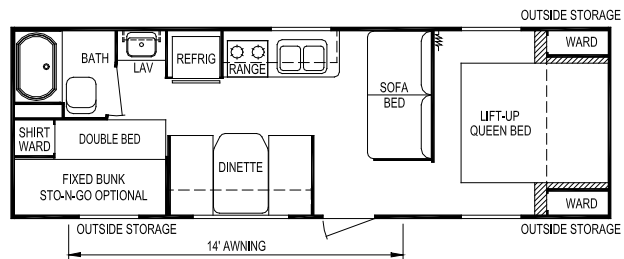
Model 204



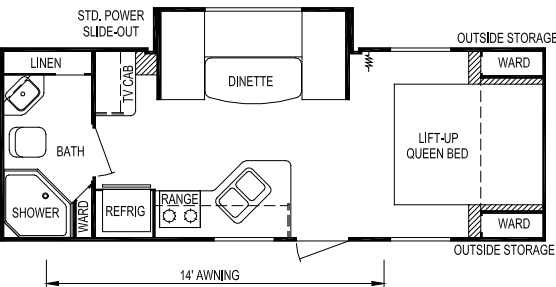
Model 260



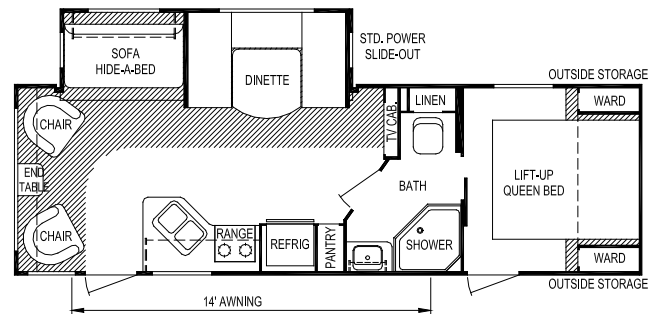
Model 207



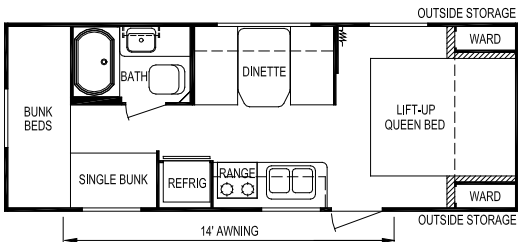
Model 268



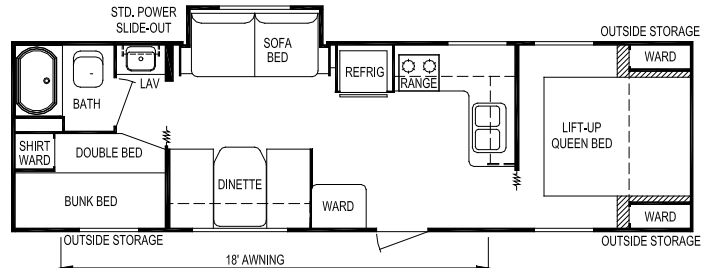
Model 236



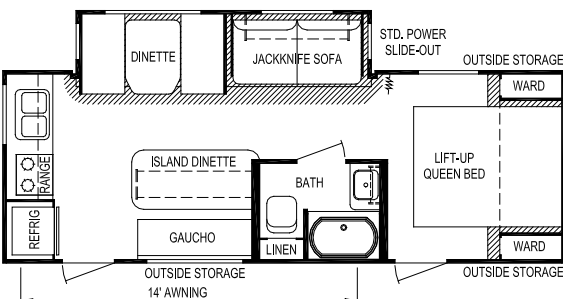
Model 272

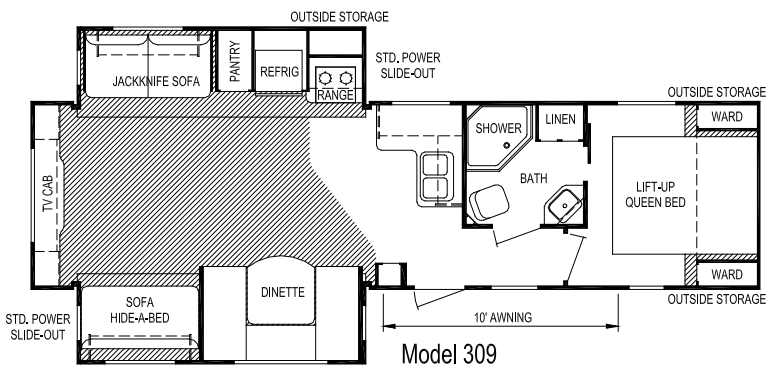
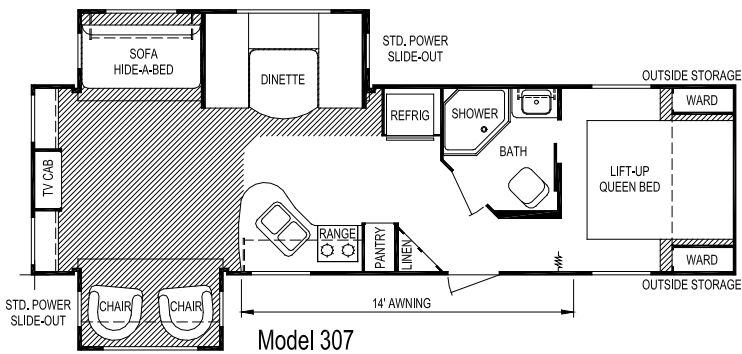
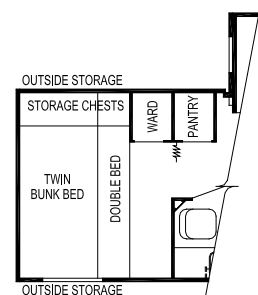
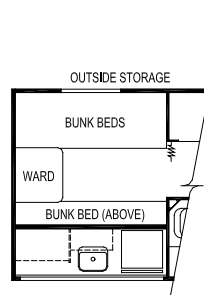
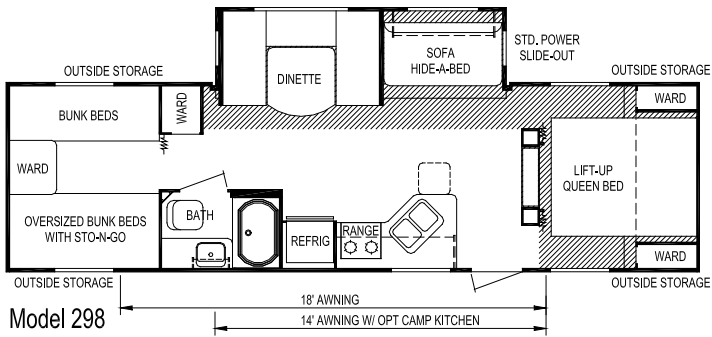
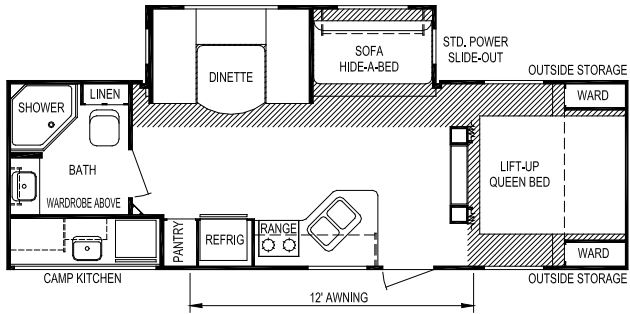
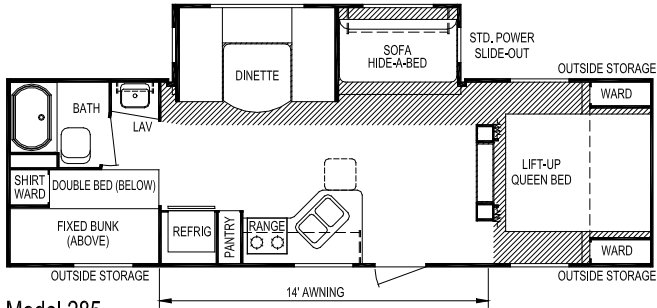


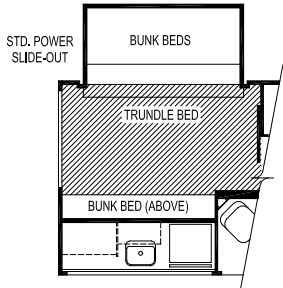
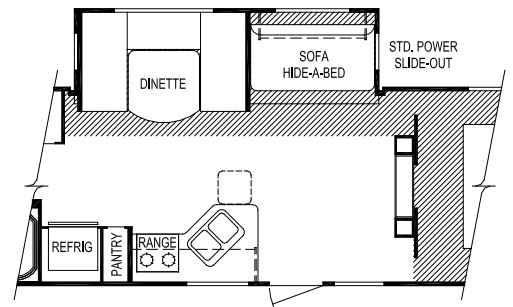
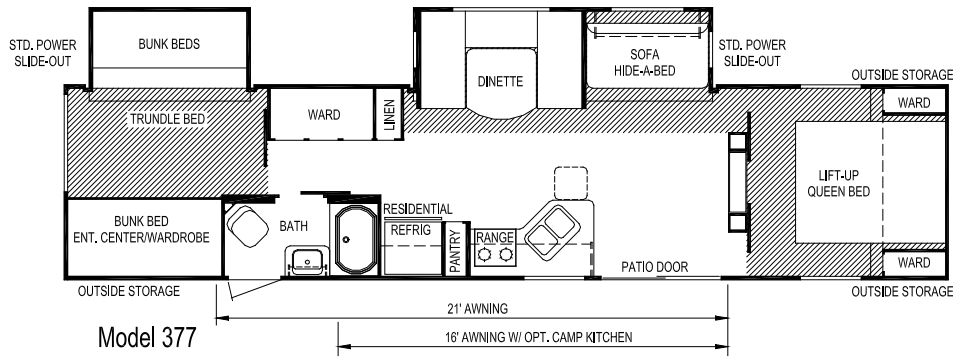
Model 249



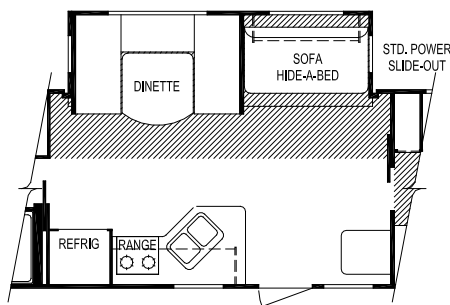
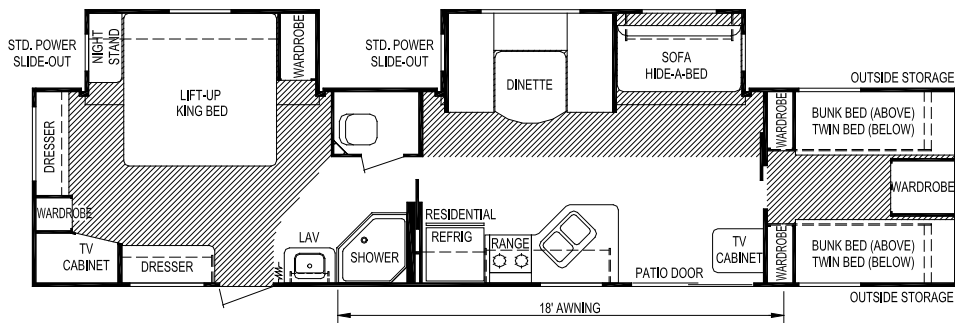
Model 279



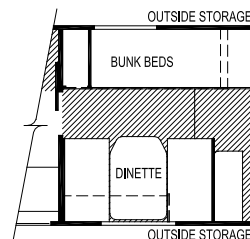




Option Camp Kitchen Model 377



Option Front Entry (Model 383)



Option Front Dinette (Model 383)

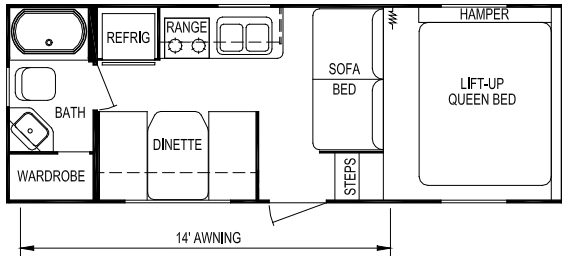
Model	196	204	207	236	249	253	258	260	268	272
Weights Unloaded Vehicle Weight (see Note 2)	3,775	4,050	4,375	4,650	3,950	6,225	5,875	4,725	4,625	6,300
Dry Hitch Weight	425	400	500	525	475	650	625	600	500	700
Dry Axle Weight	3,350	3,650	3,875	4,125	3,475	5,575	5,250	4,125	4,125	5,600
GVWR (Total Capacity of Trailer)	5,600	5,600	6,200	6,200	6,200	7,750	7,750	6,200	6,200	7,750
Carrying Capacity (see Note 2)	1,650	1,350	1,625	1,375	2,050	1,275	1,625	1,275	1,375	1,200
Accommodations Sleeping (standard / optional)	4	4	6	4	6	6	6	6	8	6
Bed Size (standard)	60" x 74"	60" x 74"	60" x 74"	60" x 74"	60" x 74"	60" x 74"	60" x 74"	60" x 74"	60" x 74"	60" x 74"
Second Bed Size	N/A	N/A	N/A	N/A	(2) 32" x 90"	N/A	N/A	N/A	48" x 74" 28" x 76"	N/A
Dinette Size	40" x 71"	N/A	40" x 71"	44" x 92"	(1) 28" x 76"	40" x 71"	40" x 71"	48" x 79"	40" x 71"	40" x 71"
Sofa	N/A	42" x 64"	42" x 64"	N/A	N/A	42" x 64"	44" x 74"	42" x 64"	42" x 64"	44" x 74"
Measurements Exterior Length (see Note 3)	22'-10"	23'-4"	27'-0"	27'-1"	26'-4"	27'-10"	29'-8"	27'-8"	29'-7"	30'-10"
Exterior Width (see Note 3)	96"	96"	96"	96"	96"	96"	96"	96"	96"	96"
Exterior Height (see Note 3)	10'-1"	10'-1"	10'-1"	10'-2"	10'-1"	11'-0"	11'-0"	10'-1"	10'-1"	11'-0"
Interior Height	78"	78"	78"	78"	78"	78"	78"	78"	78"	78"
Capacities Fresh Water System (gallons)	36	36	36	36	36	36	36	36	36	36
Gray Water Tank (gallons)	31	31	31	31	31	56	40	62	31	40
Black Water Tank (gallons)	31	31	31	31	32	31	40	31	31	40
Air Conditioner Size	13,500	13,500	13,500	13,500	13,500	13,500	13,500	13,500	13,500	13,500
Awning Size	12'	12'	14'	14'	14'	14'	14'	14'	14'	14'
Convertor Size (amps)	55	55	55	55	55	55	55	55	55	55
Furnace Rating (Btu)	25,000	25,000	25,000	25,000	25,000	25,000	25,000	25,000	25,000	25,000
Propane Gas Capacity (pounds)	60	60	60	60	60	60	60	60	60	60
Tires	ST205/ 75R14-C	ST205/ 75R14-C	ST205/ 75R14-C	ST205/ 75R14-C	ST205/ 75R14-C	ST205/ 75R15-C	ST205/ 75R15-C	ST205/ 75R15-C	ST205/ 75R14-C	ST205/ 75R15-C
Water Heater (gallons)	6	6	6	6	6	6	6	6	6	6

Notes
 (1) All weights, dimensions, and capacities shown are approximate values.
 (2) Unloaded vehicle weight and carrying capacity will vary depending upon optional equipment. Full propane tanks are factored into carrying capacity. Skyline weighs every unit at the factory. See trailer weight information label located inside the front entry door for specific unloaded vehicle weight and cargo carrying capacity.
 (3) Dimensions stated to industry standards. Exterior length includes approximately a four foot hitch on travel trailers. Exterior height includes air conditioner, if installed. Exterior width does not include the width of the awning, if installed.

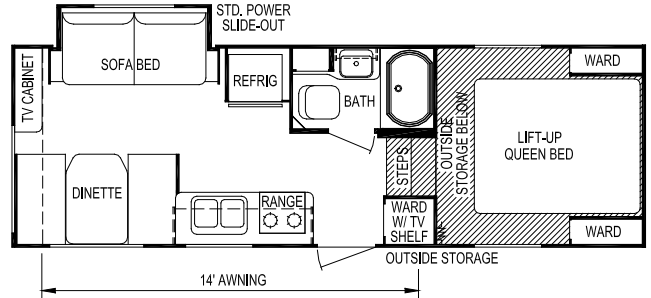
Model	279	285	287	298	307	309	310	312	340	376	377	383
Weights Unloaded Vehicle Weight (see Note 2)	5,625	6,050	6,500	6,575	7,250	7,900	8,175	7,250	7,250	7,600	8,425	8,450
Dry Hitch Weight	750	700	725	875	725	850	850	800	725	1,150	1,000	1,000
Dry Axle Weight	4,875	5,350	5,775	5,700	6,525	7,050	7,325	6,450	6,525	6,450	7,425	7,450
GVWR (Total Capacity of Trailer)	7,750	7,750	7,750	11,200	11,200	11,200	11,200	11,200	11,200	11,200	11,200	11,200
Carrying Capacity (see Note 2)	1,900	1,450	1,000	4,350	3,675	3,000	2,725	3,675	3,675	3,300	2,450	2,425
Accommodations Sleeping (standard / optional)	8	9	6	9 / 10	6	7	9 / 10	9 / 10	10	10	8	8
Bed Size (standard)	60" x 74"	60" x 74"	60" x 74"	60" x 74"	60" x 74"	60" x 74"	60" x 74"	60" x 74"	60" x 74"	60" x 74"	60" x 74"	74" x 74"
Second Bed Size	48" x 74" 28" x 76"	48" x 74" 28" x 76"	N/A	(2) 28" x 76" (2) 38" x 74"	N/A	N/A	(2) 28" x 76" (2) 38" x 74"	(2) 28" x 76" (2) 38" x 74"	(3) 28" x 76"	(2) 28" x 76"	(2) 28" x 76" (2) 38" x 74"	(2) 28" x 76" (2) 32" x 76"
Dinette Size	40" x 71"	48" x 79"	48" x 79"	48" x 79"	48" x 79"	48" x 79"	48" x 79"	48" x 79"	48" x 79" 30" x 72"	48" x 79" 40" x 71"	48" x 79"	48" x 79"
Sofa	42" x 64"	44" x 74"	44" x 74"	44" x 74"	44" x 74"	(1) 42" x 64" (1) 42" x 74"	44" x 74"	44" x 74"	44" x 74"	44" x 74"	44" x 74"	44" x 74"
Measurements Exterior Length (see Note 3)	33'-2"	32'-0"	30'-9"	33'-10"	34'-2"	35'-6"	35'-11"	36'-7"	38'-6"	40'-4"	40'-9"	40'-9"
Exterior Width (see Note 3)	96"	96"	96"	96"	96"	96"	96"	96"	96"	96"	96"	96"
Exterior Height (see Note 3)	10'-3"	11'-0"	11'-0"	11'-0"	11'-0"	11'-4"	11'-4"	11'-2"	11'-2"	11'-2"	11'-4"	11'-4"
Interior Height	78"	78"	78"	78"	78"	78"	78"	78"	78"	78"	78"	78"
Capacities Fresh Water System (gallons)	36	36	36	36	36	36	36	36	36	36	36	36
Gray Water Tank (gallons)	50	40	62	40	40	40	40	40	50	40	40	40
Black Water Tank (gallons)	40	40	40	40	40	40	40	40	40	40	40	40
Air Conditioner Size	13,500	13,500	13,500	13,500	13,500	13,500	13,500	13,500	13,500	13,500	13,500	13,500
Awning Size	18'	14'	12'	18'	14'	10'	14'	18'	18'	18'	21'	18'
Convertor Size (amps)	55	55	55	55	55	55	55	55	55	55	55	55
Furnace Rating (Btu)	25,000	25,000	25,000	25,000	25,000	25,000	25,000	25,000	25,000	25,000	25,000	25,000
Propane Gas Capacity (pounds)	60	60	60	60	60	60	60	60	60	60	60	60
Tires	ST205/ 75R15-C	ST205/ 75R15-C	ST205/ 75R15-C	ST225/ 75R15-D	ST225/ 75R15-D	ST225/ 75R15-D	ST225/ 75R15-D	ST225/ 75R15-D	ST225/ 75R15-D	ST225/ 75R15-D	ST225/ 75R15-D	ST225/ 75R15-D
Water Heater (gallons)	6	6	6	6	6	6	6	6	6	6	6	6

Notes
 (1) All weights, dimensions, and capacities shown are approximate values.
 (2) Unloaded vehicle weight and carrying capacity will vary depending upon optional equipment. Full propane tanks are factored into carrying capacity. Skyline weighs every unit at the factory. See trailer weight information label located inside the front entry door for specific unloaded vehicle weight and cargo carrying capacity.
 (3) Dimensions stated to industry standards. Exterior length includes approximately a four foot hitch on travel trailers. Exterior height includes air conditioner, if installed. Exterior width does not include the width of the awning, if installed.

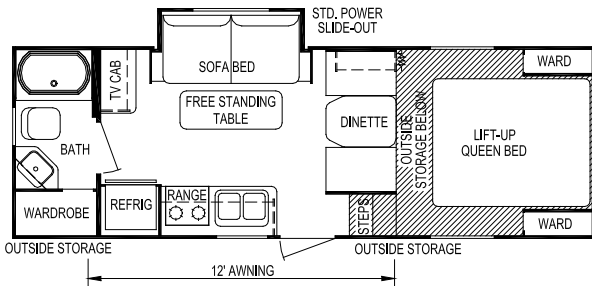
2012 JOEY Select 90" Fifth Wheels



Model 202

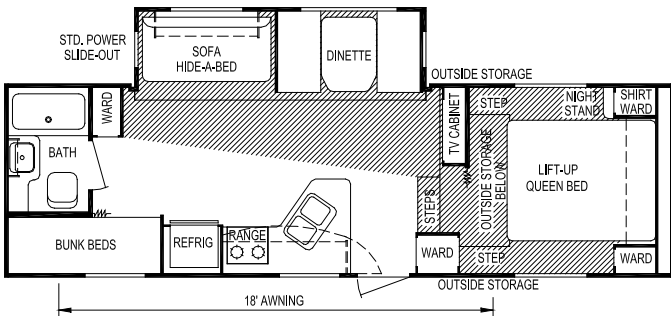


Model 221

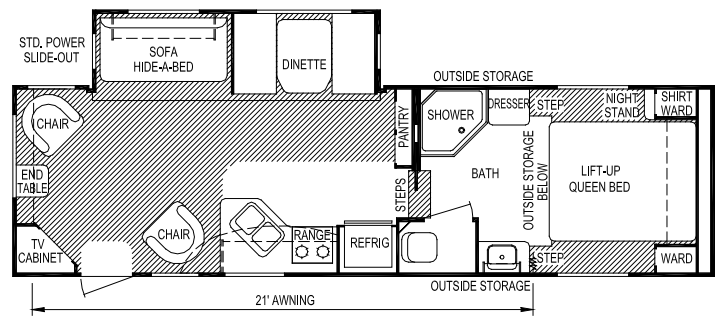


Model 217

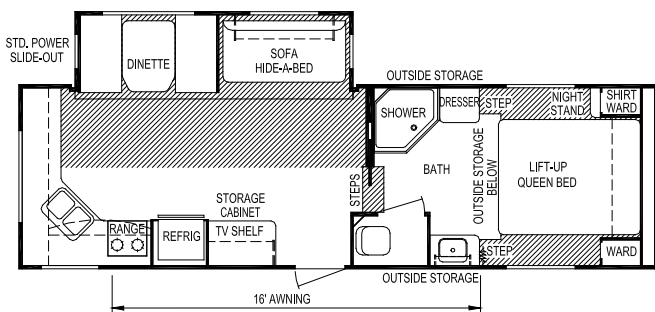
2012 JOEY Select 96" Fifth Wheels



Model 271



Model 286



Model 276

Model	202	217	221	271	276	286
Weights Unloaded Vehicle Weight (see Note 2)	4,100	4,625	4,800	6,900	6,675	7,350
Dry Hitch Weight	775	975	1,100	1,500	1,450	1,575
Dry Axle Weight	3,325	3,650	3,700	5,400	5,225	5,775
GVWR (Total Capacity of Trailer)	6,700	6,700	6,700	9,600	9,600	9,600
Carrying Capacity (see Note 2)	2,425	1,875	1,700	2,425	2,675	1,975
Accommodations Sleeping (standard / optional)	6	5	6	8	6	6
Bed Size (standard)	60" x 74"	60" x 74"	60" x 74"	60" x 74"	60" x 74"	60" x 74"
Second Bed Size	N/A	N/A	N/A	(2) 28" x 76"	N/A	N/A
Dinette Size	40" x 71"	33" x 66"	40" x 71"	40" x 71"	40" x 71"	40" x 71"
Sofa	42" x 64"	42" x 64"	42" x 64"	48" x 74"	48" x 74"	48" x 74"
Measurements Exterior Length (see Note 3)	21'-8"	23'-5"	24'-2"	29'-3"	29'-3"	30'-11"
Exterior Width (see Note 3)	90"	90"	90"	96"	96"	96"
Exterior Height (see Note 3)	10'-1"	10'-1"	10'-1"	12'-1"	12'-1"	12'-1"
Interior Height	76"	76"	76"	84"	84"	84"
Capacities Fresh Water System (gallons)	32	32	32	46	46	46
Gray Water Tank (gallons)	28	28	28	71	71	71
Black Water Tank (gallons)	28	28	28	40	40	40
Air Conditioner Size	13,500	13,500	13,500	13,500	13,500	13,500
Awning Size	14'	12'	14'	18'	18'	21'
Convertor Size (amps)	55	55	55	55	55	55
Furnace Rating (Btu)	18,000	18,000	18,000	25,000	25,000	25,000
Propane Gas Capacity (pounds)	40	60	60	60	60	60
Tires	205/ 75R14-C	205/ 75R14-C	205/ 75R14-C	225/ 75R15-D	225/ 75R15-D	225/ 75R15-D
Water Heater (gallons)	6	6	6	6	6	6

Notes

(1) All weights, dimensions, and capacities shown are approximate values.

(2) Unloaded vehicle weight and carrying capacity will vary depending upon optional equipment. Full propane tanks are factored into carrying capacity. Skyline weighs every unit at the factory. See trailer weight information label located inside the front entry door for specific unloaded vehicle weight and cargo carrying capacity.

(3) Dimensions stated to industry standards. Exterior length includes approximately a four foot hitch on travel trailers. Exterior height includes air conditioner, if installed. Exterior width does not include the width of the fenders and tires, which may extend up to 5" on each side of the body.

96" Wide

Interior

Cabinets

- Maple Cabinets
- Drawers w/Full Extension Ball Bearing Guides
- Hardwood Frame Cabinet Doors
- High Pressure Laminate Counter Tops

Decor

- Color-Coordinated Designer Interior
- Embossed Vinyl Flooring
- Extra Padded Dinette & Sofa Seat Cushions
- Decorative Glass Doors in Select Overhead Cabinets
- Hide-A-Bed Sofa
- Upgrade Window Treatment
- Pleated Night Shades
- Living Room Wall Border
- Decorative 12 Volt Light Above Dinette in Slideout
- Decorative 12 Volt Wall Light(s) at Sofa in Slideout

Kitchen & Living Area

- 18 cu. ft. Whirlpool® Residential Frost-Free Refrigerator
- Power Range Hood w/Light
- 120 V to 12 V Power Converter
- TV Antenna
- Living Room TV Jack
- Park Cable for TV Hookup
- Acrylic Kitchen Sink
- Patio Door
- AM/FM/DVD Stereo w/USB & iPod Inputs, 4 Interior Speakers & 2 Exterior Speakers
- 31,000 Btu Furnace
- Monitor Panel
- 10 Gallon Gas/Electric/DSI Water Heater
- Water Heater Bypass
- Microwave
- 15,000 Btu Ducted Air Conditioner w/Down-Draft Grill
- Overhead Cabinet in Living Room Slideout
- 21" Wedgewood® 3-Burner Range w/Oven & Piezo Ignition

Bedroom

- Color-Coordinated Quilted Bedspread
- Lift-up Bed Storage w/Piston Struts
- Evergreen® Mattress
- Bedroom Carpet
- Deluxe Headboard
- Bedroom Overhead Cabinet

Bath

- ABS Tub
- Towel Ring
- Shower Surround
- Glass Shower Enclosure
- Deluxe Medicine Cabinet
- Power Bath Vent
- Skylight in Bath
- Porcelain Foot Flush Toilet

Exterior

Roof Construction

- Tapered Roof Construction to Promote Water Runoff
- Seamless One-Piece Roof w/12 Year Manufacturer's Limited Warranty
- Pre-Wired & Framed for Roof Air Conditioner
- Awning Drip Rail w/Extra Long Drip Spouts

Wall Construction

- Double Wrapped & Sealed Corners
- Wall Studs on 16" Centers (Maximum)
- Steel-Strap Reinforcement on Walls for Superior Durability
- R-7 Settle-Resistant Insulation
- Twist Locks on All Storage Doors
- Radius Tinted Safety Glass Clamp-Ring Windows
- Patio Convenience Light
- Entry Screen Door
- Entry Door Assist Handle
- 84" Ceiling Height
- Slider Windows in Slideout Room End Walls

Chassis Construction

- Cambered Steel Frame Chassis w/Steel Outriggers
- Battery Rack
- E-Z Lube Hubs on Axles

- Electric Brakes at All Wheels
- Safety Chains & Breakaway Safety Switch
- Stabilizer Jacks

Floor Construction

- 5/8" Tongue & Groove Floor Decking
- Tightly Sealed Woven Polyethylene Underbelly

Features

- Holding Tanks w/Drain Outlet
- Rear Bumper w/Sewer Hose Carrier
- Color-Coordinated A&E® Side Awning
- Outside Shower
- Upgrade Exterior Graphics
- Two 30 lb. Propane Tanks
- Propane Tank Cover
- Swing-Away Exterior Assist Handle

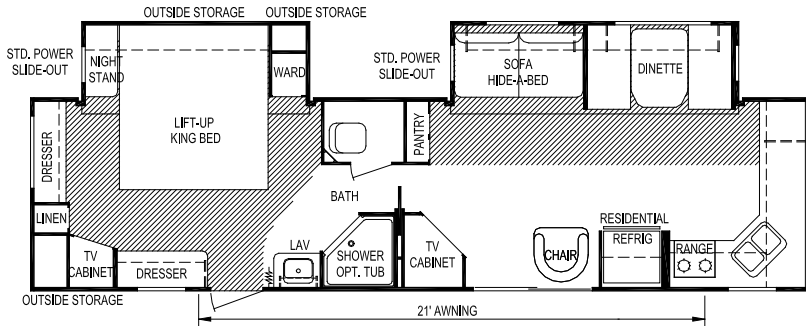
Security & Safety

- LP Gas Leak Detector
- Smoke Detector
- Carbon Monoxide Detector
- Fire Extinguisher
- Flush Door Latch w/Integral Dead Bolt Lock

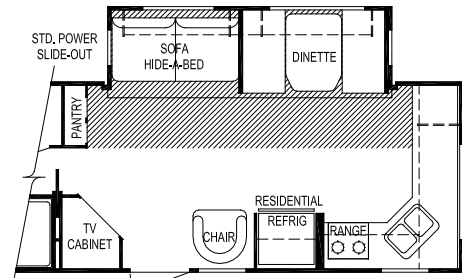
Popular Options

- 50 amp Service
- A&E® 12 Volt Power Awning Replacing Standard Awning
- Detachable Hitch
- Electric Fireplace
- Outside Grill
- 26" Vizio® LCD TV

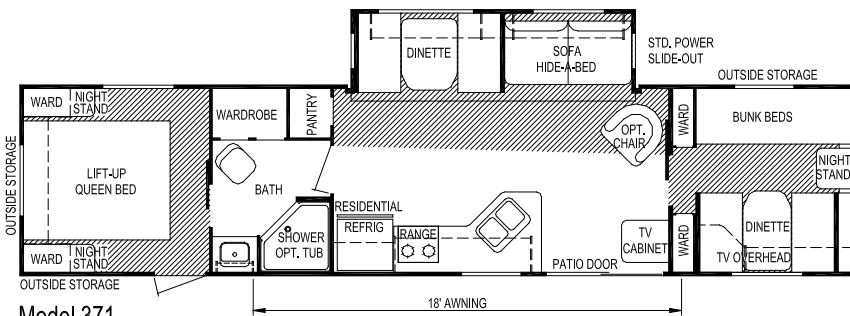




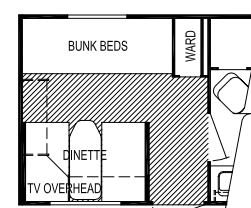
Model 326



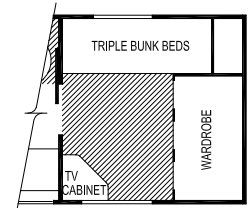
OPT. FRONT ENTRY (Model 326)



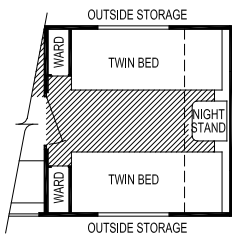
Model 371



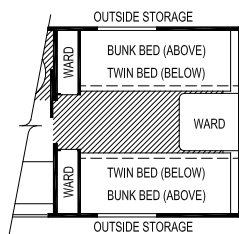
Option Rear Dinette (Model 371)



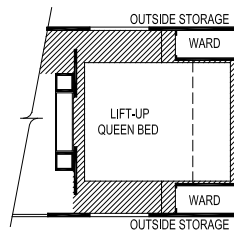
Option Front Triple Bunk Beds (Model 371)



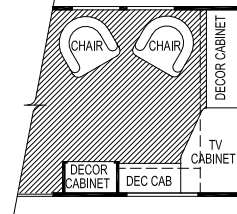
Option Twin Beds (Model 371)



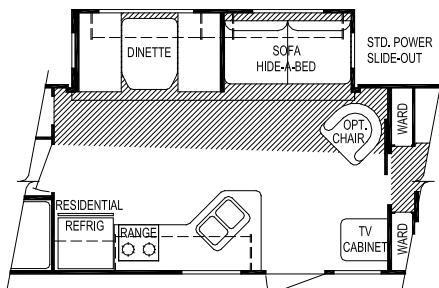
Option Front Twin Beds W/ Bunks (Model 371)



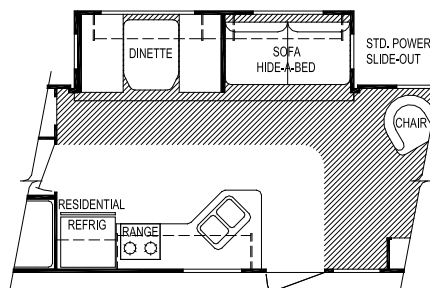
Option Front Queen Bed w/ TV (Model 371)



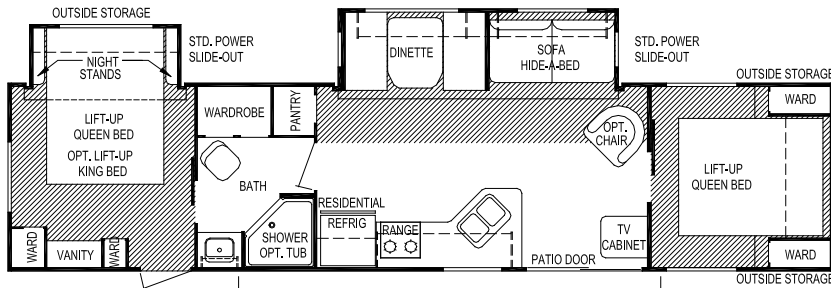
Option Front Den (Model 371)



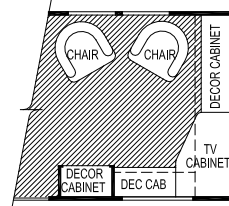
Option Living Room / Entry Door W/ Front Bedrooms (Model 371)



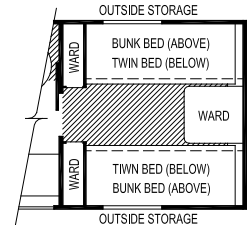
Option Living Room / Entry Door W/ Front Den (Model 371)



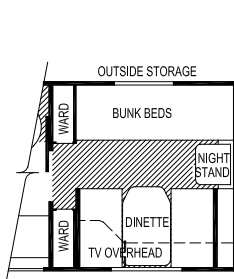
Model 372



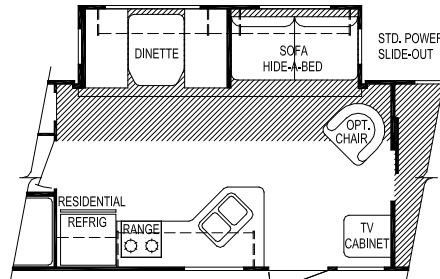
Option Front Den (Model 372)



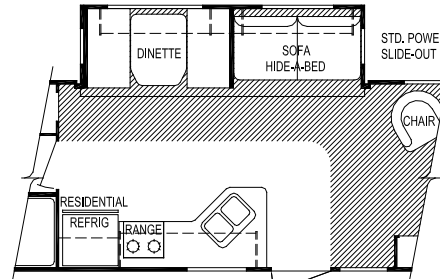
Option Front Twin Beds W/ Bunks (Model 372)



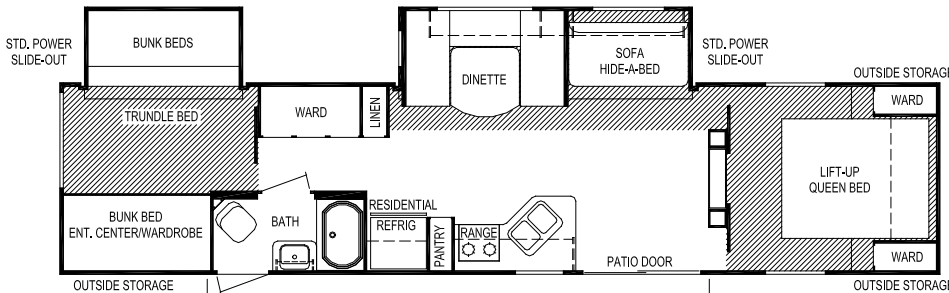
Option Front Dinette (Model 372)



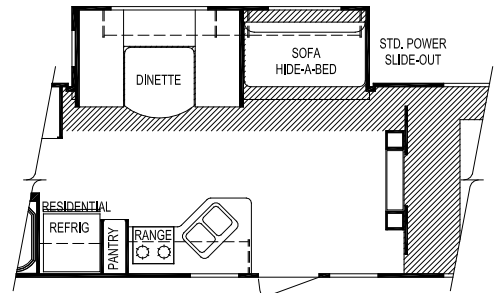
Option Living Room / Entry Door W/ Front Bedrooms (Model 372)



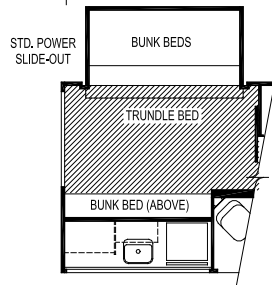
Option Living Room / Entry Door W/ Front Den (Model 372)



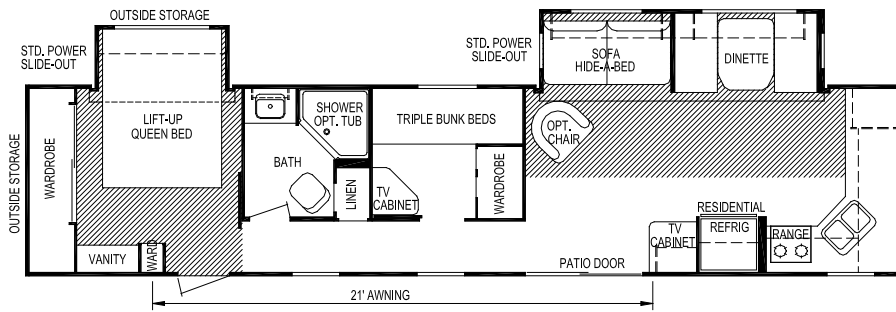
Model 378



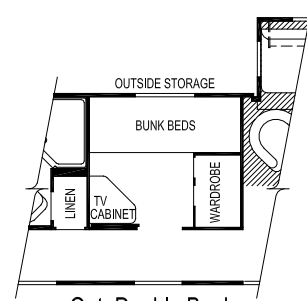
Option Front Entry Model 378



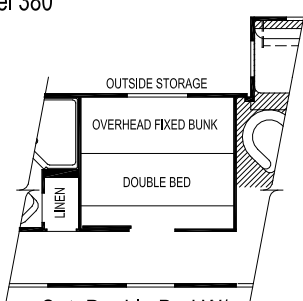
Option Camp Kitchen Model 378



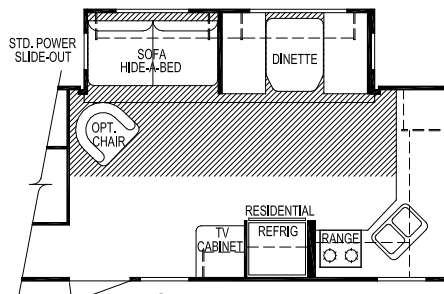
Model 380



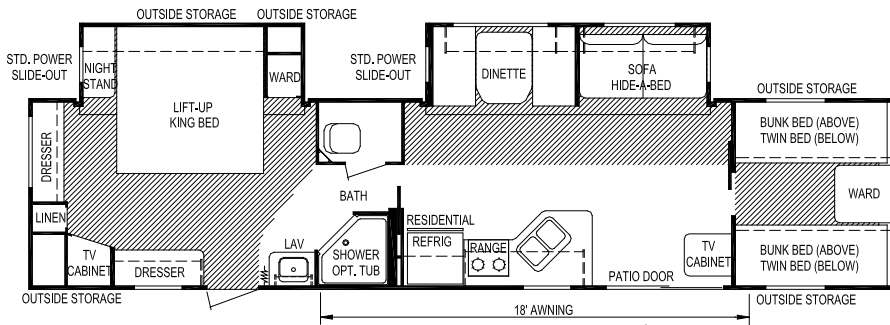
Opt. Double Bunks (Model 380)



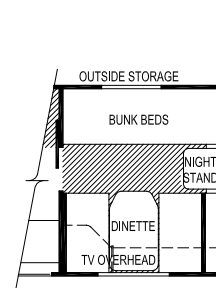
Opt. Double Bed W/ Fixed bunk (Model 380)



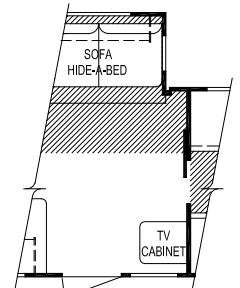
Opt. Front Entry (Model 380)



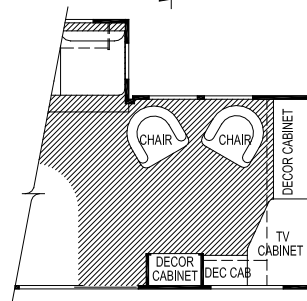
Model 386



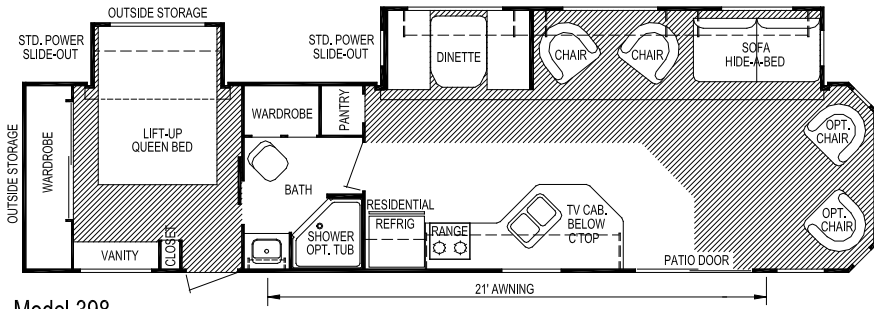
Option Front Dinette (Model 386)



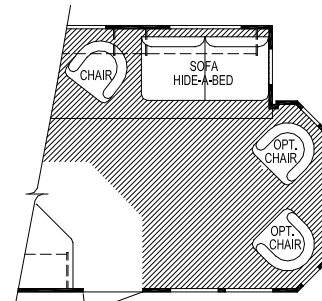
Option Front Entry (Model 386)



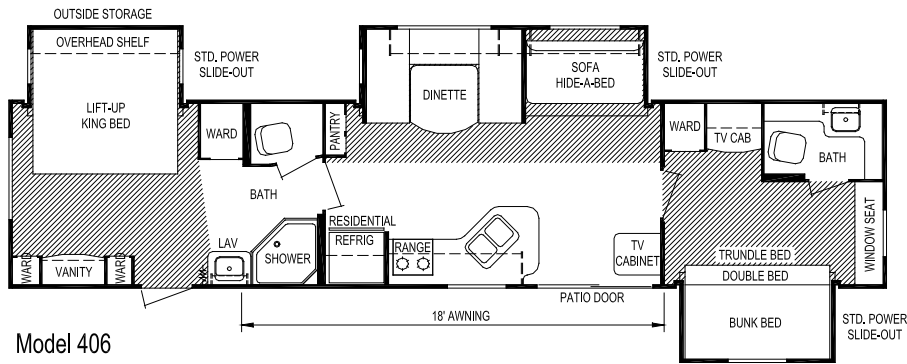
Option Front Den (Model 386)



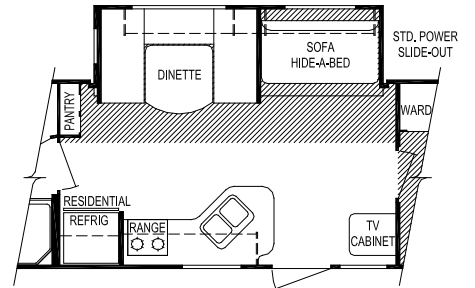
Model 398



Option Entry Door
(Model 398)



Model 406



OPT. FRONT ENTRY
(Model 406)

Model	326	371	372	378	380	386	398	406
Weights Unloaded Vehicle Weight (see Note 2)	7,800	7,100	7,350	8,175	8,150	8,325	8,300	9,200
Dry Hitch Weight	1,000	950	850	1,000	1,075	975	1,075	1,450
Dry Axle Weight	6,800	6,150	6,475	7,175	7,075	7,350	7,225	7,750
GVWR (Total Capacity of Trailer)	11,200	11,200	11,200	11,200	11,200	11,200	11,200	11,200
Carrying Capacity (see Note 2)	3,100	3,825	3,550	2,700	2,725	2,550	2,575	1,650
Accommodations Sleeping (standard / optional)	6	10 / 8	8 / 10	8	9 / 7	6	6	10
Bed Size (standard)	74" x 74"	60" x 74"	60" x 74"	60" x 74"	60" x 80"	74" x 74"	60" x 80"	74" x 74"
Second Bed Size	N/A	(2) 28" x 76"	60" x 80"	(2) 28" x 76" (2) 38" x 74"	(3) 28" x 76"	N/A	N/A	(1) 48" x 74" (2) 38" x 74"
Dinette Size	40" x 71"	40" x 71"	40" x 71"	48" x 79"	40" x 71"	40" x 71"	40" x 71"	48" x 79"
Sofa Size	48" x 74"	48" x 74"	48" x 74"	44" x 74"	48" x 74"	48" x 74"	48" x 74"	44" x 74"
Measurements Exterior Length (see Note 3)	36'-0"	38'-10"	38'-10"	40'-5"	40'-5"	40'-1"	40'-0"	41'-0"
Exterior Width (see Note 3)	96"	96"	96"	96"	96"	96"	96"	96"
Exterior Height (see Note 3)	11'-8"	11'-8"	11'-8"	11'-10"	11'-8"	11'-10"	11'-10"	11'-10"
Interior Height	84"	84"	84"	84"	84"	84"	84"	84"
Capacities Fresh Water System (gallons)	50	50	50	50	50	50	50	50
Gray Water Tank (gallons)	50	40	40	40	65	50	40	80
Black Water Tank (gallons)	40	40	40	40	40	40	40	40
Air Conditioner Size	15,000	15,000	15,000	15,000	15,000	15,000	15,000	15,000
Awning Size	21'	18'	18'	21'	21'	18'	21'	18'
Convertor Size (amps)	55	55	55	55	55	55	55	55
Furnace Rating (Btu)	31,000	31,000	31,000	31,000	31,000	31,000	31,000	31,000
LP Gas Capacity (pounds)	60	60	60	60	60	60	60	60
Tires	225/ 75R15-D	225/ 75R15-D	225/ 75R15-D	225/ 75R15-D	225/ 75R15-D	225/ 75R15-D	225/ 75R15-D	225/ 75R15-D
Water Heater (gallons)	10	10	10	10	10	10	10	10

Notes

- (1) All weights, dimensions, and capacities shown are approximate values.
- (2) Unloaded vehicle weight and carrying capacity will vary depending upon optional equipment. Full propane tanks are factored into cargo carrying capacity. Skyline weighs every unit at the factory. See trailer weight information label located inside the kitchen cabinet door for specific unloaded vehicle weight and carrying capacity.
- (3) Dimensions stated to industry standards. Exterior length includes approximately a four foot hitch on travel trailers. Exterior height includes air conditioner, if installed. Exterior width does not include the width of the awning, if installed.

Standard Features **2012 Destination Travel Trailers** 102" Wide

Interior

Cabinets

- Maple Cabinets
- Hardwood Frame Cabinet Doors
- Designer Glass Insert Doors
- Drawers w/Full Extension Ball Bearing Guides
- 40" Tall Kitchen Overhead w/2 Shelves

Decor

- Color-Coordinated Designer Interior
- Decorative Box Valances at Most Windows
- Night Shades & Lambrequin Legs in Living Area
- Drape Panels in Bedroom
- Vertical Blind at Patio Door
- Embossed Vinyl Flooring
- Extra Padded Dinette & Sofa Seat Cushions
- Wall Paper Border in Kitchen & Bath
- Decorative Lighting in Select Areas

Kitchen & Living Area

- 18 cu. ft. Whirlpool® Residential Frost-Free Refrigerator
- Residential-Style 4-Burner Range w/Oven
- 40,000 Btu Furnace w/110 Volt Fan Motor & In-Floor Ducting
- Residential-Style Stainless Steel Sink w/Single Lever Faucet
- Living Room TV Jack
- Park Cable for TV Hookup
- 10 Gallon Gas/Electric/DSI Water Heater
- Patio Door
- Eye-Level Microwave Range w/Integral Range Hood Built In Above Range
- Large U-Shaped Dinette
- Sofa Hide-A-Bed
- Decorative Swivel Rocker (See Floor Plan for Quantity)
- 15,000 Btu DuoTherm Roof-Top A/C w/In-Ceiling Ducting & Down-Draft Grille
- Panel Ceiling Fan
- AM/FM/DVD Stereo w/USB & iPod Inputs

Bedroom

- Color-Coordinated Quilted Bedspread
- Free-Standing Bed w/Frame, Box Springs & Mattress in Master Bedroom

Bath

- ABS Tub & Surround
- Deluxe Medicine Cabinet w/Mirror
- Towel Ring
- Skylight Over Tub
- Residential-Style Porcelain Toilet
- Ceiling Exhaust Fan
- Large Oval Sink Bowl w/Single Lever Faucet
- Residential-Style Single Lever Tub Faucet & Shower Head

Exterior

Roof Construction

- Tapered Roof Construction to Promote Water Runoff
- Seamless One-Piece Roof w/12 Year Manufacturer's Limited Warranty
- Awning Drip Rail

Wall Construction

- Double Wrapped & Sealed Corners
- 2 x 3 Sidewall Studs on 16" Centers (Maximum)
- Steel-Strap Reinforcement on Walls for Superior Durability
- R-7 Settle-Resistant Insulation
- Residential-Style Double-Hung Windows
- Patio Convenience Light
- Entry Screen Door
- Entry Door Assist Handle
- 96" Ceiling Height

Chassis Construction

- Cambered Steel Frame Chassis w/Steel Outriggers
- Detachable Hitch
- Electric Brakes at All Wheels
- Safety Chains & Breakaway Safety Switch
- Stabilizer Jacks
- Triple Entry Steps at Each Entry

Floor Construction

- 5/8" Tongue & Groove Floor Decking
- 2 x 4 Floor Construction, 16" O.C. w/Double 2 x 4 Under Sidewalls
- Tightly Sealed Woven Polyethylene Underbelly

Features

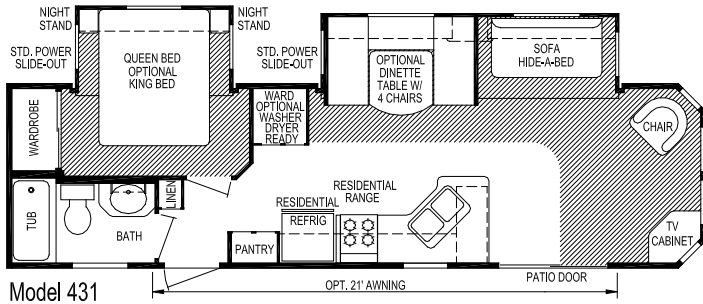
- Electric Slide-Out Rooms for Easy Setup or Storage
- Sliding Glass Patio Door
- 76" Entry Door Heights
- 6-Panel Interior Passage Doors
- 50 amp Service
- Water Heater Bypass
- Carpet Throughout (Except Kitchen & Bath)
- Vinyl Floor Tile Area at Each Entry Door
- Outside Shower

Security & Safety

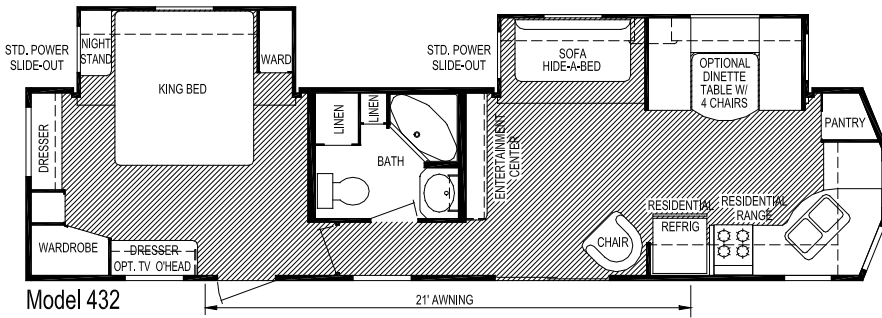
- LP Gas Leak Detector
- Smoke Detector
- Carbon Monoxide Detector
- Fire Extinguisher
- Flush Door Latch w/Integral Dead Bolt Lock

Popular Options

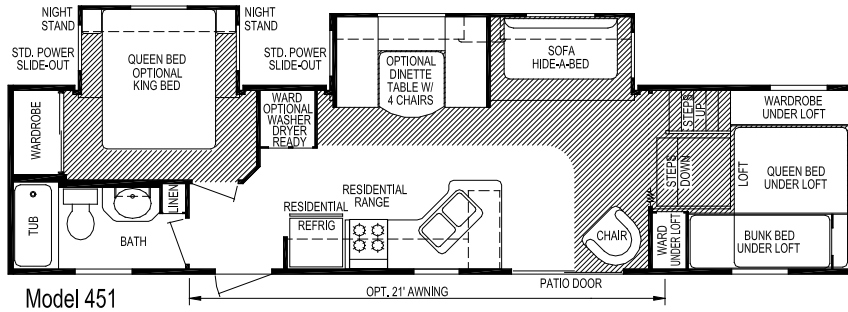
- 21' or 25' A&E® Side Awning
- Fireplace (N/A All Models)
- 19" or 26" LCD TV
- Free-Standing Dinette w/Panoramic Window
- Marine Toilet w/Holding Tank(s)
- Washer/Dryer Ready (N/A All Models)



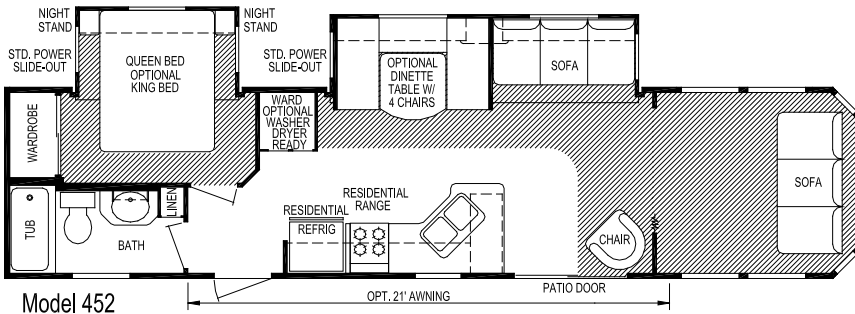
Model 431



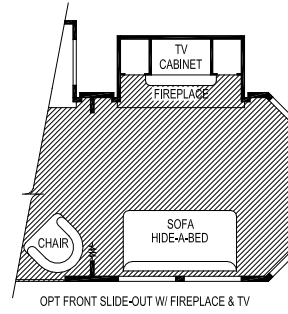
Model 432



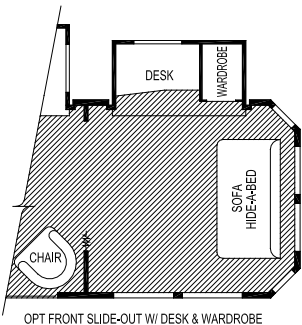
Model 451



Model 452

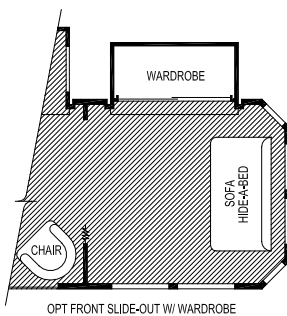


OPT FRONT SLIDE-OUT W/ FIREPLACE & TV



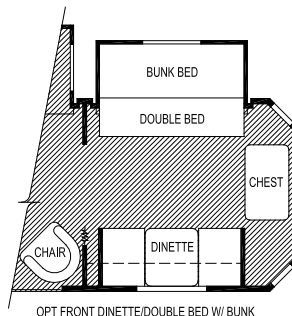
OPT FRONT SLIDE-OUT W/ DESK & WARDROBE

Model 452



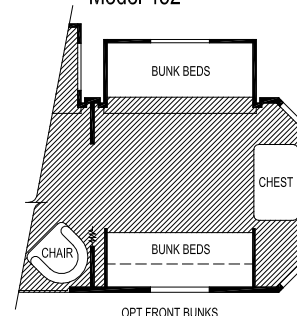
OPT FRONT SLIDE-OUT W/ WARDROBE

Model 452



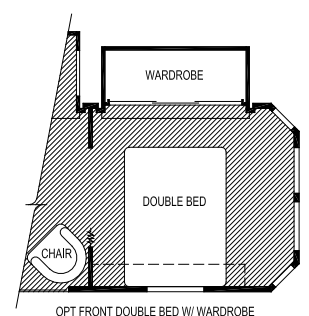
OPT FRONT DINETTE/DOUBLE BED W/ BUNK

Model 452



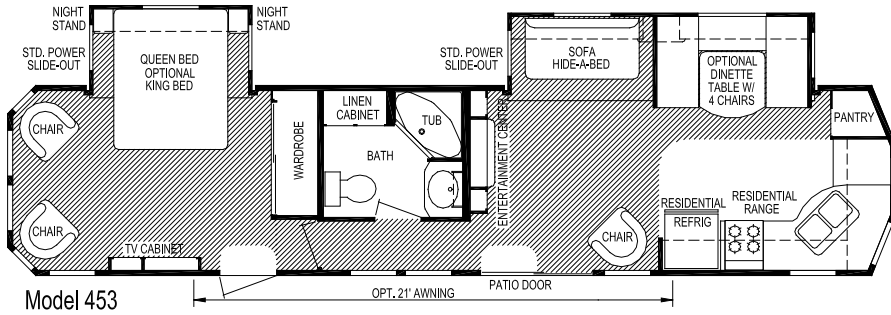
OPT FRONT BUNKS

Model 452

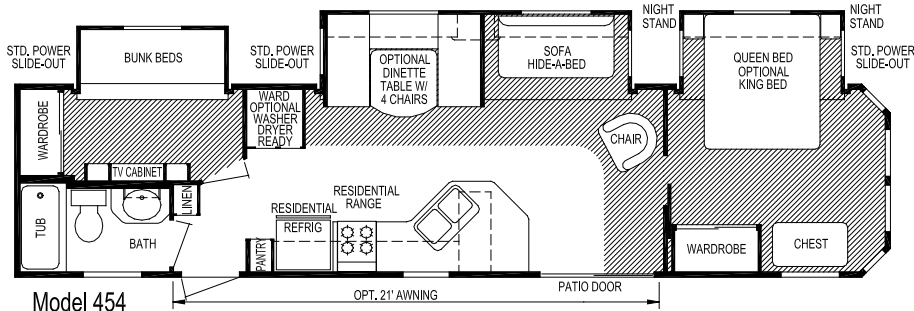


OPT FRONT DOUBLE BED W/ WARDROBE

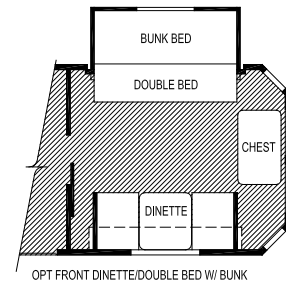
Model 452



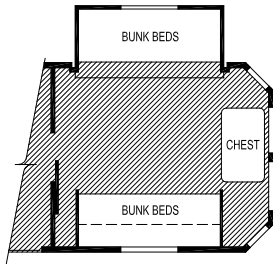
Model 453



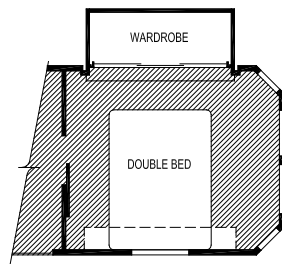
Model 454



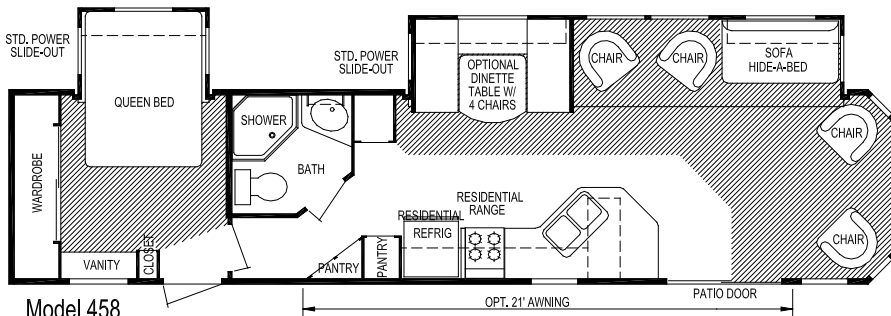
Model 454



Model 454



Model 454



Model 458



Skyline Customer Satisfaction

Skyline Customer Satisfaction is more than just a promise. We believe you deserve quality in every aspect of ownership. To ensure your continued satisfaction, we're dedicated to providing you with a quality product along with the very best service available in our industry. Skyline's "Commitment of Excellence" will be a source of pride and satisfaction for you.

Contact your Skyline dealer for details.



NO-NONSENSE WARRANTY

Manufacturing defects reported to Skyline within one year after original retail delivery of your new Travel Trailer or Fifth Wheel by an authorized dealer will be corrected without charge and within reasonable times. Excluded are misuse (including lack of reasonable maintenance), minor imperfections, alterations, and dealer or owner improper transportation, installation, or hookup.

This warranty gives you specific legal rights. You may have other rights which vary from state to state.

Skyline's suppliers often provide additional warranties on their components beyond the Skyline factory bumper-to-bumper warranty. For example — the range, water heater, furnace, convertor, air conditioner, refrigerator, microwave and awning carry two-year supplier warranties. The one-piece roof carries a 12-year warranty. Ask your dealer for full details.

Manufacturer's Notice: All specifications, equipment, and prices are subject to change without prior notice. Production of all models subject to seasonal scheduling. Skyline Corporation reserves the right to improve a model without incorporating these changes in similar models produced at an earlier date.

Consult your automobile dealer and your recreational vehicle dealer to assure the proper match between tow vehicle and trailer. Tow vehicle and recreational unit must be properly equalized for efficient product performance and safety. Before you purchase your recreational vehicle, carefully consider the number of people it will accommodate and its end use. Manufacturer's load capacity restrictions and recommendations must be followed for safe and efficient product performance.

Your Retailer, an independent contractor, who is not an agent of Skyline Corporation, is the party responsible for your purchase contract and any additions, deletions, alterations, or attachments made to or in your recreational vehicle.



For the name of your nearest Skyline-built RV dealer, call:
Hemet, CA 1-888-442-0997
Mansfield, TX 1-800-962-7773
Elkhart, IN 1-800-736-2573

Go RVing.

Or visit us at our Web Site at www.skylinecorp.com