



AMERICA'S FAVORITE CLASS C COACH

FOUR WINDS

MANUFACTURED BY THOR MOTOR COACH

MORE INFO AT:  FOURWINDS-CLASSC.COM



HIGH-DEFINITION EXTERIOR FINISH



31A Milano Brown with Vintage Maple Cabinetry



STANDARD GRAPHICS



CONTEMPORARY CHERRY



VINTAGE MAPLE



BRONZE HD-MAX



AUTUMN LEAF



MILANO BROWN



LUXURY RESORT

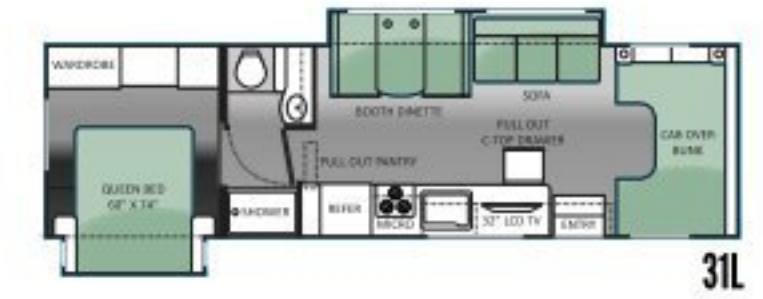
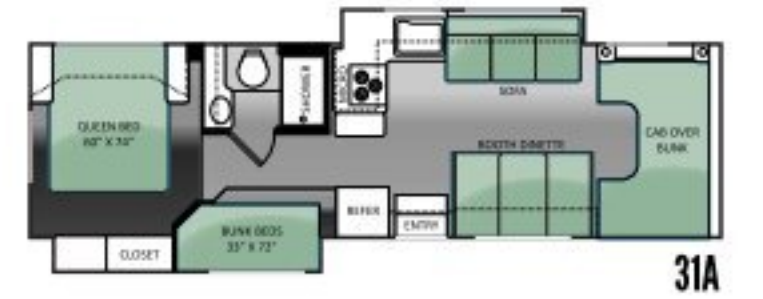
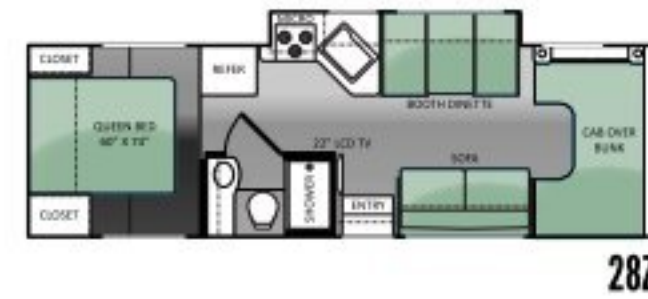
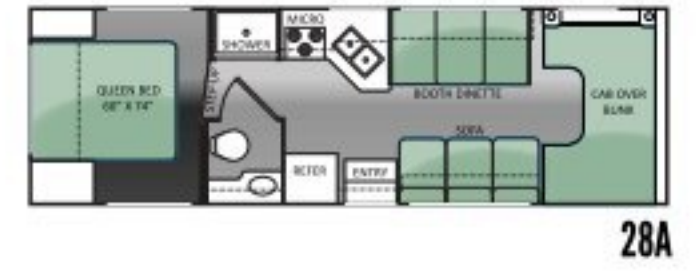
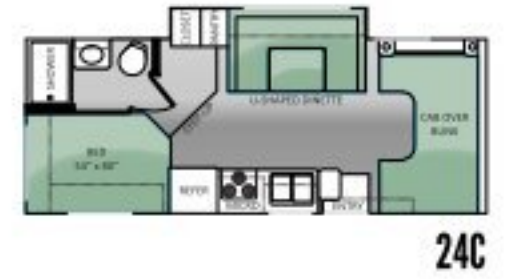


MINERAL HD-MAX



HIGH-DEFINITION EXTERIOR FINISH

IMPORTANT - PLEASE READ: Information published within this brochure reflects product design, fabrication, material, components and specifications at the date of printing. If your vehicle was manufactured before this brochure was published this information may not be accurate because vehicles assembled before the brochure was published may not have the same design, fabrication, materials, components and specification as represented in the brochure. If your vehicle was manufactured after this sales brochure was published the representations may not be accurate because, for product improvement reasons, we reserve the unilateral right, at any time, without prior notice, to make changes in product design, material, components and specifications. The date the brochure was published [i.e., "Asian date"] is set forth on the last page of the brochure. IF CERTAIN INFORMATION PUBLISHED WITHIN THIS BROCHURE IS SIGNIFICANT TO YOUR PURCHASING DECISION, PLEASE CONSULT WITH YOUR SELLING DEALERSHIP TO CONFIRM THAT THE INFORMATION IS ACCURATE WITH RESPECT TO THE VEHICLE YOU ARE CONSIDERING PURCHASING. Photographs in the brochure may depict optional equipment or may only be available in certain floor plans. We reserve the right to make changes in prices and models and to discontinue models without notice or obligation. Components, appliances and the chassis may have been manufactured in a calendar year before the vehicle's designated model year. All capacities are approximate. The actual length of the vehicle may differ from that indicated in the brochure due to variances in the manufacturing processes and/or installed components. All dry weights are based on standard model features and do not include optional features or equipment. Components, appliances and features may differ to conform to local codes. Due to EPA environmental restrictions, engine power and torque ratings may change during any model year. The Thor Motor Coach logo and its design are registered trademarks. Other products and company names are trademarks and/or registered trademarks of their respective manufacturer. While the color of the motorhome's exterior and the interior fabrics depicted in this brochure are fair and reasonable depictions, the colors depicted may not be exact match of the actual colors because of variances in photo processing and printing. Component part and appliance manufacturers issue limited warranties covering portions of the vehicle not covered under the limited warranty we issue. To learn specific details regarding warranty coverage please consult your selling dealership or review the warranty packet inside the vehicle.



MODEL	22E	23U	24C	26A	28A	28Z	31A	31F	31L
Chassis (Ford/Chevy)	Ford/Chevy	Ford/Chevy	Ford/Chevy	Ford/Chevy	Ford/Chevy	Ford/Chevy	Ford	Ford	Ford
Gross Vehicle (GVWR)	12,500 / 12,300	12,500 / 12,300	12,500 / 12,300	12,500 / 12,300	12,500 / 12,300	14,500	14,500	14,500	14,500
Gross Combined (GCWR)	18,500 / 16,000	18,500 / 16,000	18,500 / 16,000	18,500 / 16,000	18,500 / 16,000	22,000	22,000	22,000	22,000
Wheel Base	158" / 159"	158" / 159"	168" / 169"	183" / 184"	190" / 191"	210"	223"	223"	223"
Exterior Length (w/o ladder)†	23' 11" / 24' 5"	24' 10" / 25' 4"	24' 11" / 25' 5"	27' / 27' 7"	29' 9" / 30' 3"	29' 11"	32' 2"	32' 2"	32' 7"
Exterior Height (w/AC)	10' 10"	10' 10"	10' 10"	10' 10"	10' 10"	10' 10"	10' 10"	10' 10"	10' 10"
Exterior Width (w/o mirrors)	99"	99"	99"	99"	99"	99"	99"	99"	99"
Interior Height	82" / 77"	82"	82" / 77"	82"	82"	82"	82"	82"	82"
Awning Size	15'	15'	16'	8' 6"	14'	14'	10' 6"	16'	16'
Fuel (gal)	55 / 57	55 / 57	55 / 57	55 / 57	55 / 57	55	55	55	55
LPG (lb)	40.9	40.9	40.9	40.9	40.9	40.9	40.9	40.9	40.9
Fresh/Waste/Gray Water (gal)	50/24.5/32	40/24.5/38.5	40/24.5/38.5	40/25/26	40/25/22	40/25/32	40/26/31	40/28/28F-23R	40/31/29
Water Heater (gal)	6	6	6	6	6	6	6	6	6
Furnace (BTUs)	20,000	25,000	20,000	30,000	30,000	30,000	30,000	30,000	30,000
Exterior Storage Capacity (cu. ft.)	52.3	69.6	49.2	40.0	108.6	98.3	55.2	43.5	65.9

STANDARD FEATURES AND OPTIONS

CONSTRUCTION & EXTERIOR

- Slick Fiberglass Exterior
- Exterior Graphics Package
- Exterior Rear MEGA Storage Compartment
- Seamless Roto-cast Storage Compartments
- Manual Patio Awning
- Slide-Out Room Awning (24C, 26A, 28Z, 31A, 31F & 31L)
- Roof Ladder
- Rubber Tread Entry Steps
- Drop Down Stairwell Entrance Step

CONSTRUCTION & EXTERIOR OPTIONS

- Outside Shower
- HD-MAX with Exterior Graphics Package
- Electric Patio Awning

AUTOMOTIVE & COCKPIT

- AM/FM Dash Radio w/Oversized Buttons, CD Player & Weather Band Tuner; iPod & Sirius Satellite Ready
- Deluxe Exterior Mirrors
- Metal Running Boards
- 5,000-lb. Trailer Hitch

AUTOMOTIVE & COCKPIT OPTIONS

- Spare Tire
- Convenience Package: Keyless Entry/Valve Stem Extenders
- Deluxe Heated Remote Exterior Mirrors
- Wheel Liners
- Leatherette Driver & Passenger Captain's Chairs
- Power Driver's Seat (Ford Chassis Only) (28A, 28Z, 31A, 31F & 31L)
- Back-up Monitor
- Cockpit Carpet Mat
- Wood Dash Applique

INTERIOR

- Residential Linoleum Throughout (22E, 23U, 24C & 26A)
- Residential Linoleum - Kitchen, Bath and Living Area (28A, 28Z, 31A, 31F & 31L)
- Metal Entry Grab Handle
- Windshield Privacy Curtain
- 13,500 BTU Roof Air Conditioner in Front

- Hardware with Brushed Nickel Finish
- Night Shades
- Fabric Barrel Chair (23U Only)
- Fabric Jackknife Sofa (N/A 22E, 23U & 24C)
- Leatherette Hide-A-Bed Sofa with Air Mattress (31L Only)
- Booth Dinette (28A, 28Z, 31A, 31F & 31L)
- Fabric U-shaped Dinette (22E, 23U & 24C)

INTERIOR OPTIONS

- Leatherette U-shaped Dinette (23U & 24C)
- Leatherette Jackknife Sofa (26A, 28A, 28Z, 31A, 31F & 31L)
- Leatherette Euro Chair w/Ottoman IPO Barrel Chair (23U Only)
- 15,000 BTU Roof Air Conditioner in Front (N/A 22E & 24C)
- Fantastic Fan in the Overhead Bunk

KITCHEN

- Double Door Refrigerator
- 3-Burner High-output Gas Range Top
- Microwave Oven
- Large Single Bowl Sink (22E Only)
- Large Double Bowl Sink (N/A 22E)
- Pantry (24C, 31F & 31L)
- Laminate Countertops
- Flip-up Countertop Extension (N/A 28A, 28Z & 31L)
- Full Extension Metal Drawer Guides

KITCHEN OPTIONS

- 3-Burner High-output Gas Range Top with Oven
- Convection Microwave
- Fantastic Fan

ENTERTAINMENT

- 22" LED Television with DVD Player in Living Area (28Z Only)
- 32" LCD Television with DVD Player in Living Area (31L Only)
- 22" LED Television in Bedroom (31L Only)
- Television Antenna & Booster
- Cable Television Prep
- HD/DSS Satellite Prep

ENTERTAINMENT OPTIONS

- 22" LED Television with DVD Player on Swivel, Side Mounted in Cab-over (N/A 28Z & 31L)
- 19" LCD Television in Bedroom
- (2) 13" LCD Televisions with DVD Player in bunk beds (31A Only)
- Exterior Television (31A & 31L)

BEDROOM & BATHROOM

- Queen Size Bed
- Bunk Beds in Hallway Slideout (31A Only)
- Bedspread and Pillow Shams
- Power Bath Vent
- China Bowl Toilet
- Rectangular Shower with Curtain (22E & 24C)
- Shower with Glass Door (N/A 22E & 24C)

SAFETY & CONVENIENCE

- Entry Door with Deadbolt Lock
- Smoke, LPG, Carbon Monoxide Detectors
- Fire Extinguisher
- Systems Control Center

SAFETY & CONVENIENCE OPTIONS

- Child Safety Seat Tether Anchor in Dinette

ELECTRICAL & PLUMBING

- Onan RV OG 4000 Gas Generator
- 30 amp Service with Shore Line Power Cord
- Battery Disconnect Switch
- Emergency Start Switch
- Auxiliary House Battery
- 6-gallon DSI Gas Water Heater
- Water Heater Bypass System

ELECTRICAL & PLUMBING OPTIONS

- Holding Tanks w/Heat Pads
- Automatic Shoreline-to-Generator Transfer Switch
- Second Auxiliary House Battery
- 6-gallon DSI Gas/Electric Water Heater



SCAN THE QR CODE WITH
YOUR SMART PHONE

YOUR LOCAL TMC DEALER:



RVIA

Go RVing.

