

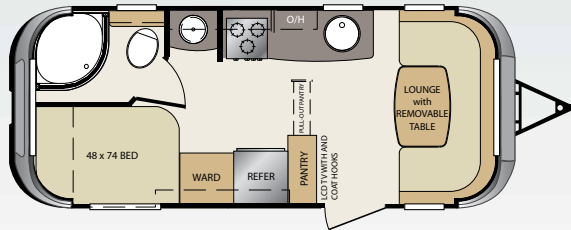
Vantage

The New Perspective in Camping

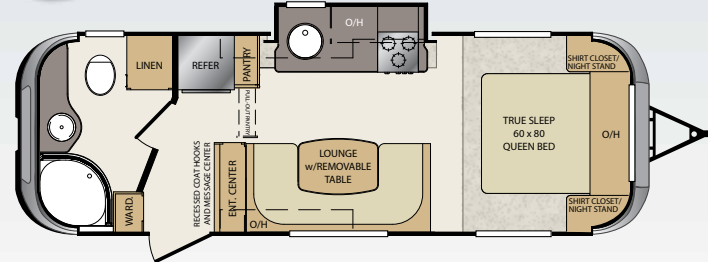
LEARN MORE



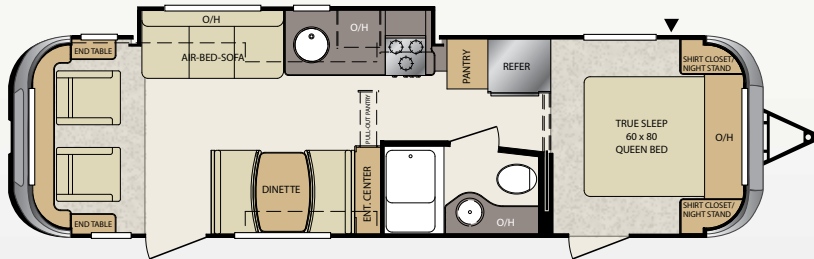
Download the free Tag app at <http://gettag.mobi> and scan this Tag.



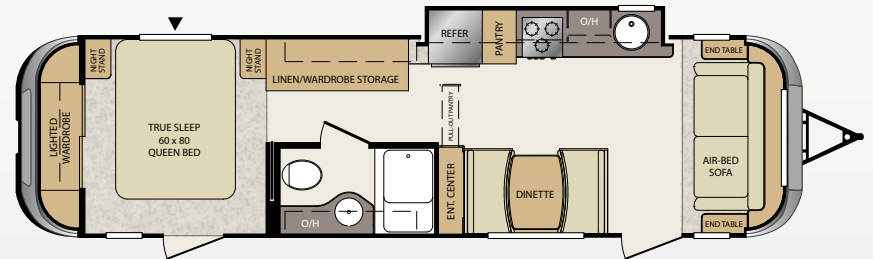
190L



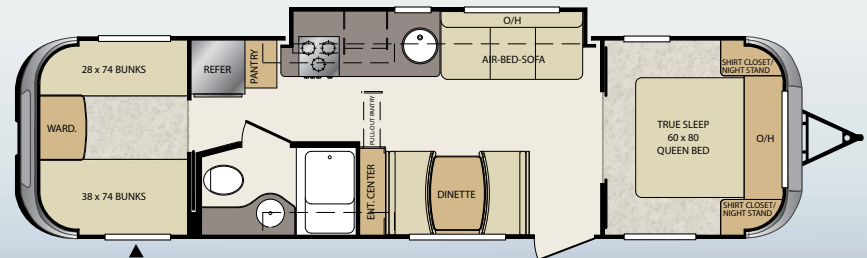
25RBS



29RLS



32FLS



32SQB



	190L	25RBS	29RLS	32FLS	32SQB
SHIPPING WEIGHT	4935	5855	6645	6855	6825
CARRYING CAPACITY	2065	2345	1555	1345	1375
HITCH WEIGHT	645	665	935	1035	750
EXTERIOR LENGTH	23' 7"	29'	34' 3"	35' 10"	35' 7"
EXTERIOR WIDTH	8' 6"	8' 6"	8' 6"	8' 6"	8' 6"
EXT. HEIGHT - A/C TOP	10' 6"	10' 6"	10' 6"	10' 6"	10' 6"
FRESH WATER (GAL.)	50	50	50	50	50
WASTE WATER (GAL.)	30	30	30	30	30
GREY WATER (GAL.)	30	60	30	30	30
LPG CAPACITY (LBS.)	60	60	60	60	60

*SEE DISCLAIMER ON OTHER SIDE



Vantage

The New Perspective in Camping

The Big Advantages:

- Classic, timeless shape that will look good many years from now. Clean, uncluttered exterior.
- Cool tone high gloss gray exterior with black accents (bumper, wheelwell, windows).
- Low slung chassis with a shorter overall height (to top of A/C).
- Curved sidewalls, exterior and interior, creating a 101" wide body
- Uniform window line (all windows same height and distance off floor), clean appearance.
- Large (7") radius transition from side wall to roof.
- Slideouts that conform to wall curvature — inside and out!
- Full front and rear caps. No boxy edges.
- Window awning on front cap conceals window, provides exterior storage location.
- Recessed LED exterior lighting throughout.
- Classic round tail lights recessed into cap.
- Center stop lamp.
- Separate high impact ABS rear bumper with haircell finish.
- Exterior convenience center on ODS.
- Vaulted ceiling with 7' interior height.

www.Vantage-RV.com

EXTERIOR

- State of the art curved walls
- Cool gray high gloss color
- Full fiberglass front and rear caps
- Fiberglass window awning (front only)
- Separate high impact ABS rear bumper with haircell finish
- Recessed LED exterior lighting throughout
- Black framed, tinted windows with full vent on every window
- Storage compartment with 1" thick baggage door
- Sleek grab handle
- 30" wide radius main entry door with tall window & full vent
- Cable/Satellite prep
- Awning
- Fully enclosed underbelly
- Invisa-pull gate valves
- Exterior shower with hot and cold water

WALLS - CONSTRUCTION

- Welded aluminum framed curved side walls
- Solid block foam insulation
- High gloss finish
- Vacuum bonded construction

ROOF

- Arched interior & exterior roof rafters on 16" centers
- 3/8" roof decking
- One piece EPDM rubber roof
- 7" radius transition full length between roof and sidewalls

FLOOR

- Welded aluminum laminated floor with 20" radius corners (front and rear)
- Enclosed and heated underbelly for tanks and valves

CHASSIS

- 8" Norco engineered frame, tapered Z main rails, huck fastened (minimal welding)
- E coated frame
- 4400 pound, 4" drop leaf spring axles
- MOR/ryde suspension system
- EZ lube axles
- 12" electric brakes
- 225/75R15D radial tires

AdVantage PACKAGE (MANDATORY)

- Stainless steel appliance package
- Front and rear fiberglass caps
- Recessed LED lighting throughout
- Residential pull-out sprayer faucet
- 7 foot vaulted ceilings
- 10 gallon gas/electric DSI water heater (19UL has 6 gallon)
- All-in-one convenience center
- Invisa-pull gate valves
- Power tongue jacks
- High gloss sidewalls

UTILITIES

- 55 amp converter
- Two 30 lb. LP bottles with auto changeover
- Universal TV antenna
- Detachable 30 amp shore line
- Systems monitor panel

SAFETY

- LP leak detector
- Smoke detector
- CO detector
- Fire extinguisher
- Tinted safety glass windows
- Break away switch
- Safety chains
- Manual slide backup on all electric slideouts
- Battery disconnect switch

APPLIANCES

- AM/FM/CD/Stereo with DVD player and MP3 hookup
- 6 cu. Ft. two door refrigerator
- 3 burner range
- 10 gallon gas/electric DSI water heater (19UL has 6 gallon)
- Wall mount thermostat controlled A/C
- 30,000 BTU furnace

BATHROOM

- Super suite tub design
- Radius shower curtain
- Porcelain foot flush toilet

KITCHEN

- Tall (29") kitchen window with full panoramic view
- Residential pull-out sprayer faucet
- Deep bowl gourmet kitchen sink
- Steel ball bearing drawer guides

LIVING AREA

- Uniform window line throughout
- Norco cable slides (varying depths) with whisper quiet slide motor
- Slideouts conform to wall contour
- Molded front and rear roof transitions
- 7 foot interior height (center of coach)
- Recessed LED lighting throughout

OPTIONAL EQUIPMENT

- 15,000 BTU ducted A/C
- Canadian certification

MANDATORY OPTIONS

- Aluminum wheels
- 32" LCD HDTV (19UL has 19")
- Air mattress hide a bed sofa (N/A on 19UL and 25RBS)
- Undermount spare tire

* Product information is as accurate as possible as of the date of publication of this brochure. Features, floor plans, and specifications are subject to change without notice. Please also consult Keystone's web site at www.keystonerv.com for more current product information and specifications. Tow Vehicle Disclaimer. CAUTION: Owners of Keystone recreational vehicles are solely responsible for the selection and proper use of tow vehicles. All customers should consult with a motor vehicle manufacturer or their dealer concerning the purchase and use of suitable tow vehicles for Keystone products. Keystone disclaims any liability or damages suffered as a result of the selection, operation, use or misuse of a tow vehicle. KEYSTONE'S LIMITED WARRANTY DOES NOT COVER DAMAGE TO THE RECREATIONAL VEHICLE OR THE TOW VEHICLE AS A RESULT OF THE SELECTION, OPERATION, USE OR MISUSE OF THE TOW VEHICLE. 6/2012



**Keystone RV
Company**