

DISCOVERY® 2013

CLASS A DIESEL | **FLEETWOOD RV**



Gold Starfire

EXTERIOR GRAPHICS/INTERIOR DÉCOR



Copper Java



Cashmere Twist



Platinum Frost

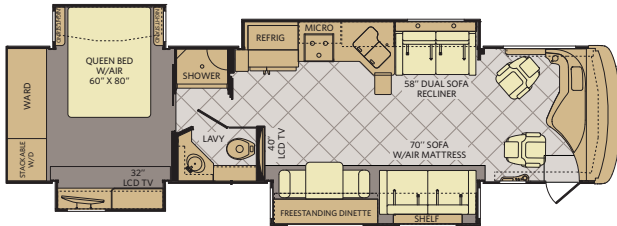


Concord Frost

TOP FEATURES

- 380HP Cummins® ISC 8.3L Engine
- Molded Fiberglass Roof
- Sony® A/V Electronics
- 2,000-Watt Pure Sine Wave Inverter w/ Remote
- 8.0 kW Onan® Quiet Diesel Generator w/ Slide
- High-Gloss Porcelain Tile w/Decorative Tile Inserts
- Polished Solid Surface Countertops
- Hardwood Cabinet Doors/Drawers
- MCD Double Roller Shades
- Side Swinging Luggage Doors
- 84" Interior Ceiling Height
- Optional Exterior Pull-Out Grill and Kitchenette
- Chrome Luggage Door Handles

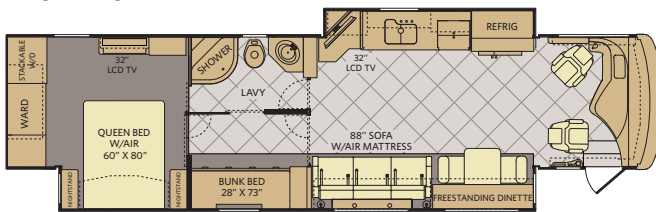
36J



INTERIOR STORAGE CAPACITY: 215 CU. FT.
EXTERIOR STORAGE CAPACITY: 140 CU. FT.

Available options: 087, 144, 635, 830, 853, 854, 856

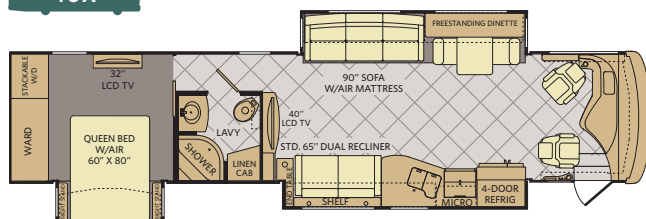
40G



INTERIOR STORAGE CAPACITY: 166 CU. FT.
EXTERIOR STORAGE CAPACITY: 208 CU. FT.

Available options: 087, 144, 635, 830, 853, 854, 856, 867, 878

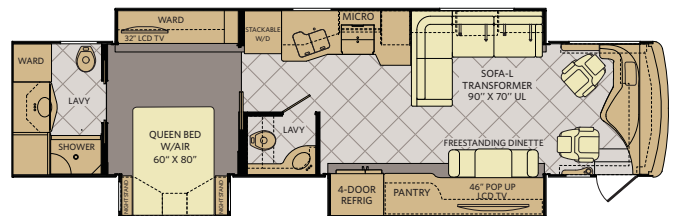
40X



INTERIOR STORAGE CAPACITY: 197 CU. FT.
EXTERIOR STORAGE CAPACITY: 208 CU. FT.

Available options: 087, 113, 144, 191, 627, 635, 830, 853, 854, 856

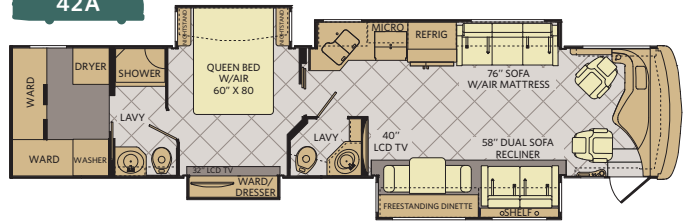
40E



INTERIOR STORAGE CAPACITY: 197 CU. FT.
EXTERIOR STORAGE CAPACITY: 208 CU. FT.

Available options: 087, 113, 144, 853, 854, 856

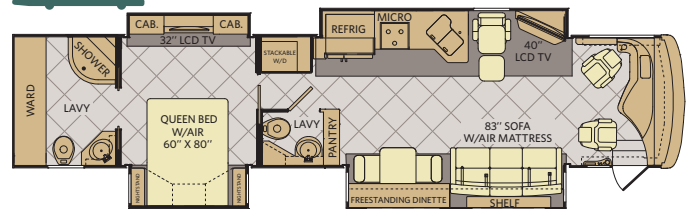
42A



INTERIOR STORAGE CAPACITY: 152 CU. FT.
EXTERIOR STORAGE CAPACITY: 189 CU. FT.

Available options: 087, 144, 830, 853, 854, 856, 861

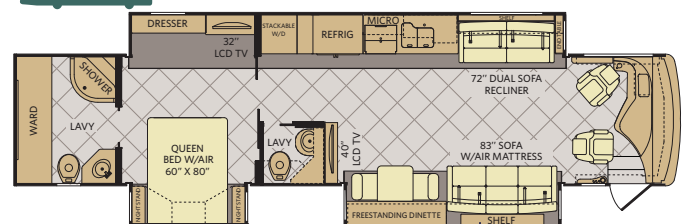
42D



INTERIOR STORAGE CAPACITY: 204 CU. FT.
EXTERIOR STORAGE CAPACITY: 189 CU. FT.

Available options: 087, 139, 140, 144, 830, 853, 854, 856

42M



INTERIOR STORAGE CAPACITY: 207 CU. FT.
EXTERIOR STORAGE CAPACITY: 189 CU. FT.

Available options: 087, 144, 635, 830, 853, 854, 856

WEIGHTS & MEASUREMENTS

CHASSIS	POWER BRIDGE®				POWER BRIDGE® II		
MODELS	36J	40G	40X	40E	42A	42D	42M
Wheelbase (inches)	228"	276"	276"	276"	302"	302"	302"
GVWR (lbs) ¹	32,400	32,400	32,400	32,400	44,700	44,700	44,700
Front GAWR (lbs) ²	12,400	12,400	12,400	12,400	14,700	14,700	14,700
Tag Axle GAWR	N/A	N/A	N/A	N/A	10,000	10,000	10,000
Rear GAWR (lbs) ²	20,000	20,000	20,000	20,000	20,000	20,000	20,000
GCWR (lbs) ³	42,400	42,400	42,400	42,400	54,700	54,700	54,700
Hitch Rating Weight (lbs) ^{1,††}	7,500	10,000	10,000	10,000	10,000	10,000	10,000
Tongue Weight (lbs) ¹	750	1,000	1,000	1,000	1,000	1,000	1,000
Fuel Capacity (gal)	100	100	100	100	150	150	150

POWER BRIDGE® (36' - 40' MODELS)

Model: Freightliner® XCM Series
Engine: Cummins® 8.3L ISC
Transmission: Allison® 3000 MH 6-Speed w/Electronic Shifter

Alternator: Delco Remy 160 Amp
Torque: 1,050 lb-ft @ 1,400 RPM
Horsepower: 380HP

POWER BRIDGE® II (42' MODELS)

Model: Freightliner® XCM Series
Engine: Cummins® 8.3L ISC
Transmission: Allison® 3000 MH 6-Speed w/Electronic Shifter

Alternator: Leece Neville 170 Amp
Torque: 1,050 lb-ft @ 1,400 RPM
Horsepower: 380HP

DIMENSIONS & CAPACITIES

MODELS	36J	40G	40X	40E	42A	42D	42M
Overall Length ⁴	37' 7.5"	41' 7.5"	41' 7.5"	41' 7.5"	43' 4"	43' 4"	43' 4"
Overall Height (with A/C)	12' 10"	12' 10"	12' 10"	12' 10"	12' 10"	12' 10"	12' 10"
Overall Width (maximum) ^{5, 6}	102"	102"	102"	102"	102"	102"	102"
Interior Height (maximum)	84"	84"	84"	84"	84"	84"	84"
Interior Width (maximum)	96"	96"	96"	96"	96"	96"	96"
Fresh Water Holding Tank (gal)	100	100	100	100	100	100	100
Grey Water Holding Tank (gal)	75	75	75	75	60	60	60
Black Water Holding Tank (gal)	50	50	50	50	40	40	40
Appliance Propane Tank (gal) (WC) ⁷	38.7	38.7	38.7	38.7	28.2	28.2	28.2
Water Heater Tank (gal)	10	10	10	10	10	10	10

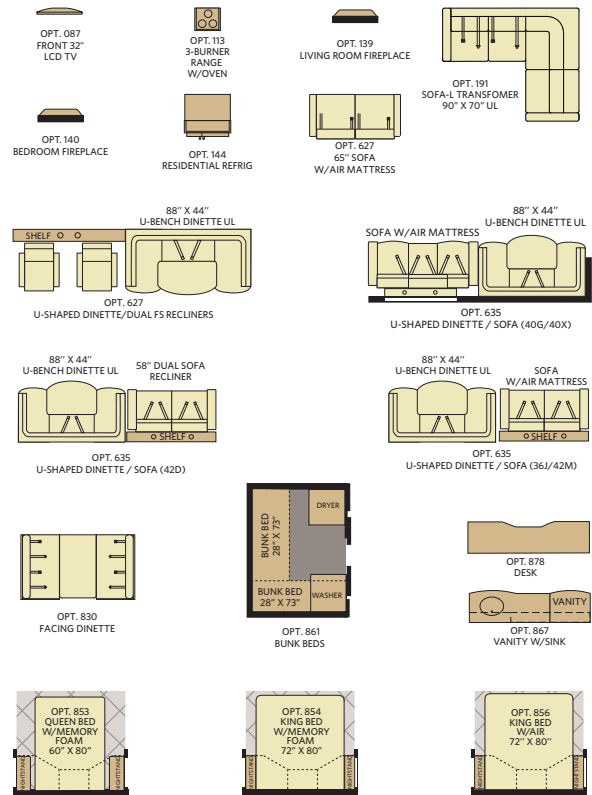
Liquid Weight Reference:

Water (gal) = (8.3 lbs/3.8 kgs) Fuel (gal) = (6.1 lbs/2.8 kgs) Propane (gal) = 4.2 lbs/1.9 kgs

Metric Conversion:

Multiply pounds x 0.453 to obtain kilograms. Multiply gallons x 3.785 to obtain liters. Multiply liters x 61 to obtain cubic inches.

OPTIONS



CONFIGURE A COACH THE WAY YOU WANT!

COLORS • FLOOR PLANS • OPTIONS • DÉCOR

www.FLEETWOODRV.COM



FLEETWOOD RV IS AN ALLIED SPECIALTY VEHICLE COMPANY.

Addendums

- GVWR (Gross Vehicle Weight Rating) is the maximum permissible weight of this fully loaded motorhome. The GVWR is equal to or greater than the sum of the (UVW) unloaded vehicle weight plus the (OCCC) occupant cargo-carrying capacity*.
- GAWR (Gross Axle Weight Rating) is the maximum permissible loaded weight a specific axle is designed to carry.
- GCWR (Gross Combined Weight Rating) is the value specified by the motorhome manufacturer as the maximum allowable loaded weight of this motorhome with its towed vehicle. Towing and braking capacities may be different. Refer to Fleetwood and chassis manufacturer's manuals for complete information.
- Length measured from front bumper to rear bumper (excludes accessories).
- Excludes safety equipment and awnings.
- Motorhomes feature a body width over 96" which will restrict your access to certain roads. Before purchasing, you should research any state and/or province road laws which may affect your usage.
- Tank manufacturer's listed water capacity (WC). Actual propane capacity is 80% of water listing as required by the safety code.

† The chassis manufacturer recommends the installation of a supplemental brake control system to activate the brakes on the vehicle or trailer you are towing. Hitch receiver ratings expressed are maximum for the hitch receiver installed and may require the purchase of additional equipment that is dependent on the weight of the towed load. Consult with hitch receiver manufacturer for further information.

* UVW and OCCC are found on the label containing the federal certification tag in each RV.

†† The Minimum Towable Load of this vehicle is the available weight capacity, up to GCWR, when the coach is fully loaded to maximum GVWR. However, if the coach is loaded to something less than maximum GVWR, that extra available weight capacity can be added to your Towable Load. For example, if your coach is loaded to 1000lbs less than maximum GVWR, your Towable Load increases accordingly. Do not exceed the hitch rating weight, GVWR or GCWR.

IMPORTANT—PLEASE READ

Product information, photography and illustrations included in this publication were as accurate as possible at the time of printing. For further product information and changes, please visit our website at www.fleetwoodrv.com or contact your local Fleetwood RV dealer. Prices, materials, design and specifications are subject to change without notice. All weights, fuel, liquid capacities and dimensions are approximate. Fleetwood RV has designed its recreational vehicles to provide a variety of uses for customers. Each vehicle features optimal seating, sleeping, storage and fluid capacities. The user is responsible for selecting the proper combination of loads (i.e., occupants, equipment, fluids, cargo, etc.) to ensure that the vehicle's capacities are not exceeded.

CONTACT US

To locate a dealer near you, visit our website at www.fleetwoodrv.com or call 1-800-322-8216. We can also be contacted at Fleetwood RV Customer Relations, P.O. Box 1007, Decatur, IN 46733.



** All 2013 Fleetwood RV motorhomes include a 1-year emergency Fleetwood RV Trusted Roadside Assistance membership. For complete info, see your Fleetwood RV dealer.

©2012 Fleetwood RV Inc. Printed in USA. Inventory Control Number DIS13F1, 05/12. Model Year 2013, First Edition.