

SPORTSCOACH SRS



CoachmenRV.com

THE COACHMEN ADVANTAGE

What is the Coachmen advantage? It's the collection of unique features offered in a Coachmen motorhome to ensure a smoother ride, a better camping experience, and a motorhome that will last for years.

1. NOBLE SELECT™

Protected by a three-year warranty, these sidewalls have a high-gloss gelcoat finish to prevent fading. They are also 20% lighter than wood substrate sidewalls, provide more occupant cargo carrying capacity, and offer three times the insulation against extreme climates.

2. AZDEL™ COMPOSITE

Most manufacturers use wood sidewalls that can expand, swell, and eventually mold. We use Azdel. It's impervious to water, won't rot or mold, and, with less than a 1% chance of delaminating, it ensures the long-term integrity of the sidewalls.

3. REINFORCED LAMINATION

We vacuum bond and pinch roll every sidewall, floor, and roof, then perform a pull adhesion test. Most manufacturers just do one process or the other, but by doing both we improve the strength and longevity of the sidewalls.

4. FOREFRONT OF TECHNOLOGY

We offer the latest in technology by pairing electronics with smart phones. A safer and larger viewing area is achieved when dual-mirroring your smart phone GPS to the 10" Axxera dash radio and backup system. Wi Fi Ranger and solar prep will help keep you connected in even remote camping areas.

5. SIGHT RITE DASH™

Our dashes are angled 20 degrees forward. This increases the line of sight for the driver, and offers the best road visibility on the market.

6. EVEN COOL DUCT™

Our patented duct system evenly disperses air through the whole coach. And we use Amaco ducting instead of Styrofoam because it's antimicrobial, preventing the growth of bacteria and ensuring a cool, clean coach in even scorching heat.

7. DIGITAL OWNER'S MANUAL

Our owner's manuals are easy to access through the Coachmen website or our free app. Supplemented with videos, PowerPoints, and more, it's got all you need to know about your coach.

EXTERIOR COLOR OPTIONS



Full Body Paint – Eventide



Full Body Paint – Siesta Key

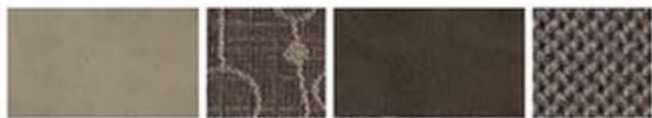


Full Body Paint – Brandywine



Full Body Paint – Cimmaron

INTERIOR DECOR COLOR SELECTIONS



Champagne



Prosecco

INTERIOR WOOD COLOR SELECTIONS



Slate Cherry



Driftwood

THE DRIVE IS IN THE DETAILS.

THIS ECONOMICAL DIESEL HAS IT ALL: POWERFUL DRIVING, SMOOTH HANDLING, SPACIOUS FLOORPLANS, BEAUTIFUL INTERIORS, AND AMAZING FIXTURES. THE ONLY THING MISSING? YOU.



With a solid-surface countertop, stainless steel fixtures and appliances, and a stylish subway tile backsplash, the gourmet kitchen will bring out the chef in you. Enjoy the breathtaking views from the cab during the day, then convert the cabover drop-down bunk for the kids to sleep over at night.



A dashboard monitor with rear and side color cameras makes backing up and navigating tight spaces a breeze.

An exterior entertainment center, complete with LED TV, brings home entertainment to the great outdoors.

The super durable Tread Lite™ Double Power Step makes it easy to board and exit safely.

Storage is plentiful in Sportscoach SRS, including a pass-through full basement that's ideal for stowing oversized gear without compromising living space.



Photography features the Sportscoach SRS 339DS floorplan with Champagne decor and Slate Cherry cabinets.





Upgraded leatherette cushions and a panoramic window allow you to comfortably enjoy your meals with a view.

After a day exploring the great outdoors, kick back and relax in theater seating while enjoying a movie on the 40" LED TV (339DS).



The stylish bedroom in Sportscoach SRS will have you looking forward to bedtime. A comfortable mattress and modern decor create the perfect environment for rest and relaxation.

The Coach-Pap™ Station allows for storage of CPAP machines and other electronics, located in the cabinet above the bed.

Sportscoach SRS boasts plenty of storage, including a full wardrobe with washer/dryer prep, a pantry, and plenty of cabinet space. It's a long-distance traveler's dream come true.



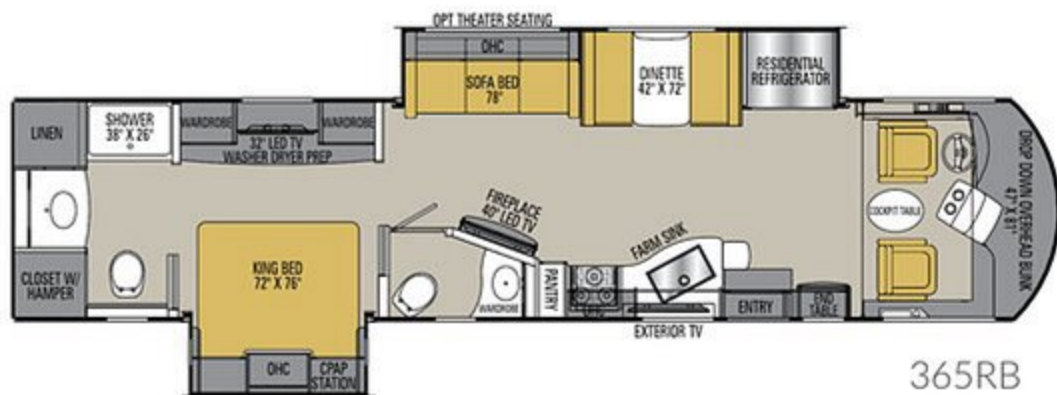
Built with stainless steel and porcelain touches, the bathroom is both appealingly designed and easy to clean.

Sportscoach SRS includes three floorplan options, so you'll have no trouble choosing the one that suits you perfectly.

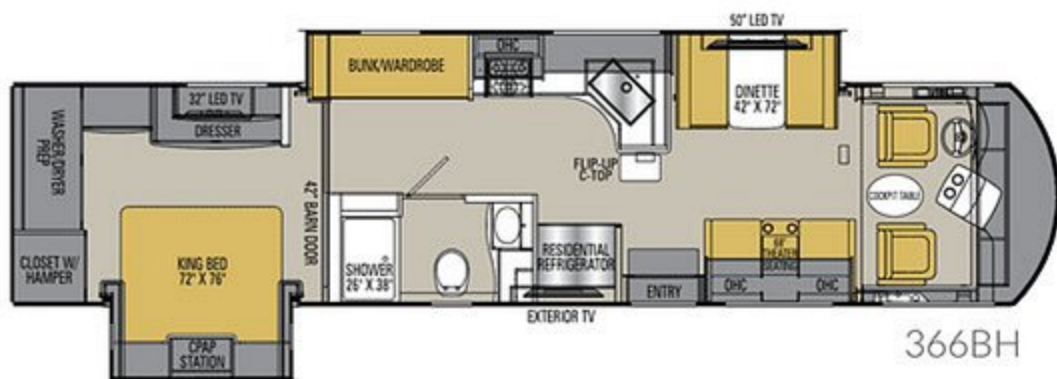
FLOORPLANS



339DS



365RB



366BH

STANDARD FEATURES

INTERIOR APPOINTMENTS

Padded Vinyl Ceiling
Hardwood Cabinet Doors Throughout
Self Closing Ball Bearing Drawer Guides Throughout
Solid Surface Countertop in Galley
Brushed Nickel Hardware and Fixtures
Manual Side Shades in Driver - Passenger Area
6-Way Power Driver Seat with 3-Point Seat Belt
Deluxe Manual Passenger Seat with 3-Point Seat Belt
Solar Privacy Shades Throughout
Theater Seating (339DS)
Visionary Sofa Hide-A-Bed (365RB)
Dream Dinette
Storage Drawers under Booth Dinette
Power Front Privacy Shade
Upgraded Linoleum Throughout
Fireplace (365RB Only)

INTERIOR EQUIPMENT

40" LCD TV Coach
Wi Fi Ranger
Sound Bar Entertainment System
King Jack TV Antenna
Pre-Wired for Satellite Dish and Blu-ray Players
10.1" Touch Screen Radio- AM/FM/CD with Bluetooth, Dual Mirror Technology and Camera Monitor

GALLEY

30" Stainless Steel OTR Convection Microwave
3-Burner Cook Top with Glass Cover
Stainless Steel 22 cu. ft. Residential Refrigerator (365RB)
Stainless Steel 18 cu. ft. Residential Refrigerator (339DS)
Kitchen Backsplash
Fantastic Power Ceiling Vent
Large Stainless Steel Sink
Pop-up Recept with USB Ports

BATH AND WATER

Whole Coach Water Filter
Single Pedal Porcelain Toilet with Sprayer
Power Bath Vent
Skylight Over Shower
Winterization Inlet at termination compartment
Water Pump Switch at Termination
Black Tank Flush System
Demand Water Pump
10-Gallon Gas/Electric Water Heater
Systems Monitor Panel
Stackable Washer/Dryer Prep

SLEEPING

King Bed
Upgraded Mattress
Bedsprad, Pillows with Shams
Residential Style Headboard
32" LCD TV Bedroom
Bedroom Radio AM/FM/Bluetooth with Outside Speakers
Front Drop-Down-Bunk
Coach-Pap® Station

ELECTRICAL/HEATING/AC

50-Amp Power Cord
GFCI Circuit
Outside Receptacle (DS)
Emergency Start Switch
Coach and Chassis Battery Disconnect
Auxiliary Batteries (4)
Exterior LED Strip Light
Solar Panel Hook-Up
13,500 BTU Ducted Roof A/C Front
13,500 BTU Ducted Roof A/C Rear
20-Gallon LP Tank
6.0 KW Diesel Generator
2000W Pure Sine Wave Inverter
Automatic Transfer Switch
Cable TV Jack
LED Interior Ceiling Lighting
Auto Generator Start
Charging Station for Electronic Devices

AUTOMOTIVE/EXTERIOR

Straight Rail Freightliner Chassis
Chassis Air Suspension and Air Brakes
340HP ISB Cummins Rear Diesel Engine, 700 lbs./ft. Torque
6-Speed Allison 2100MH Automatic Transmission (339DS)
6-Speed Allison 2500MH Automatic Transmission (365RB, 366BH)
Diesel Cockpit Dash Console
Cupholders with LED Lighting at Dash
Rear Vision Camera with Color Monitor
Color Side Cameras with Color Monitor
Fully Automatic Leveling Jacks
Defroster Fans
Cruise Control
Manual Air Dump
Intermittent Wipers
Dash Air Conditioning
Frameless Windows
Exterior Mirrors with Heat and Remote
Auxiliary Driving Lights
Fuel Fills, Both sides
Auxiliary Air Supply Hook-Ups
22.5 Radial Tires with Chrome Wheel Inserts
Front and Rear Mud Flaps
Power Entrance Steps - Double
Deluxe Radius Entrance Door with Dead Bolt Lock
Front and Rear Fiberglass Caps
Air Horn
High Gloss Gelcoat Sidewalls (with Azdel® Superlight Composite)
Aluminum Side Swing Compartment Doors
Towing Hitch with 7-Way Plug
Power Patio Awning
Slide-Out Awning(s)
Roof Ladder
Pass Through Basement Storage
Full Body Paint
Fire Extinguisher
LP Leak Alarm
Smoke Detector
Carbon Monoxide Detector
Outside Entertainment Center
Interior and Exterior Assist Handles
Exterior Propane Hook-Up
Oval Cockpit Pedestal Table

OPTIONAL FEATURES

INTERIOR COLOR SELECTIONS

Champagne
Prosecco

INTERIOR WOOD COLOR SELECTIONS

Slate Cherry
Driftwood

EXTERIOR COLOR SELECTIONS

Full Body Paint (Standard)
• Eventide
• Siesta Key
• Brandywine
• Cimmaron

OPTIONAL FEATURES

Theater Seating (365RB)
Washer / Dryer
Diamond Shield Protection
15,000 BTU A/C w/ Heat Pump Front
15,000 BTU A/C w/ Heat Pump Rear
CSA Up-fit¹
CD-MVSA (Canadian Motor Vehicle Safety Act)
Travel Easy Roadside Assistance provided by Coach-Net

Notes:

¹ Mandatory For All Canadian Provinces

SPORTSCOACH SRS SPECIFICATIONS

CLASS A DIESEL	339DS	365RB	366BH
CUMMINS ISB 6.7L ENGINE	340 HP@2600 RPM	340 HP@2600 RPM	340 HP@2600 RPM
ALLISON TRANSMISSION	2100MH	2500MH	2500MH
WHEEL BASE	208"	252"	252"
GVWR	26,000 lbs	29,410 lbs	29,410 lbs
GCWR	30,000 lbs	33,000 lbs	33,000 lbs
FUEL CAPACITY	90 gal	90 gal	90 gal
LP GAS CAPACITY	20 gal	20 gal	20 gal
FURNACE (BTUs)	(2) 20,000	35,000	35,000
EXTERIOR LENGTH (w/o Ladder)	36' 3"	40' 0"	40' 0"
EXTERIOR HEIGHT (w/A/C)	12' 10"	12' 10"	12' 10"
EXTERIOR WIDTH	102"	102"	102"
FRESH WATER	72 gal	72 gal	72 gal
GREY WATER	45 gal	45 gal	45 gal
BLACK WATER	45 gal	45 gal	45 gal
WATER HEATER	10 gal	10 gal	10 gal
AWNING SIZE	18'	17'	20'
EXTERIOR STORAGE	130 cu. ft.	191 cu. ft.	TBD
TOW HITCH	8,000 lbs	8,000 lbs	8,000 lbs

GVWR (Gross Vehicle Weight Rating) is the maximum permissible weight of the unit when fully loaded. It includes all weights, inclusive of all fluids, occupants, cargo, optional equipment and accessories. For safety and product performance do NOT exceed the GVWR.

GCWR (Gross Combined Weight Rating) is the maximum permissible loaded weight of your motor home and any towed trailer or towed vehicle. Actual GCWR of this vehicle may be limited by the sum of the GVWR and the installed hitch receiver maximum capacity rating; see hitch rating label for detail.

GAWR (Gross Axle Weight Rating) is the maximum permissible weight, including cargo, fluids, optional equipment and accessories that can be safely supported by each axle.

UVW (Unloaded Vehicle Weight) is the typical weight of the unit as manufactured at the factory. It includes all weight at the unit's axle(s), including full fuel, all fluids and LP Gas. The UVW does not include cargo, fresh potable water, additional optional equipment or dealer installed accessories.

*Estimated Average based on standard build optional equipment.

CCC (Cargo Carrying Capacity) ** is the amount of weight available for fresh potable water, cargo, passengers, additional optional equipment and accessories. CCC is equal to GVWR minus UVW. Available CCC should accommodate fresh potable water (8.3 lbs per gallon). Before filling the fresh water tank, empty the black and gray tanks to provide for more cargo capacity.

** Estimated average based on standard build optional equipment

Each Coachmen motorhome is weighed at the manufacturing facility prior to shipping. A label identifying the unloaded vehicle weight of the actual unit and the cargo carrying capacity is applied to every Coachmen motorhome prior to leaving our facilities.

The load capacity of your unit is designated by weight, not by volume, so you cannot necessarily use all available space when loading your unit.

Actual towing capacity is dependent upon your particular loading and towing circumstances, which includes the GVWR, GAWR and GCWR as well as adequate trailer brakes. Please refer to the Operator's Manual of your vehicle for further towing information.

All information contained in this brochure is believed to be accurate at the time of publication. However, during the model year, it may be necessary to make revisions and Coachmen reserves the right to make all such changes without notice, including prices, colors, materials, equipment and specifications as well as the addition of new models and the discontinuance of models shown in this brochure. Therefore, please consult with your Coachmen dealer and confirm the existence of any materials, design or specifications that are material to your purchase decision. 11/18

©Copyright 2018 Sportscoach RV a Division of Forest River Inc. - All Rights Reserved.

CUSTOMER SATISFACTION



www.ForestRiverBuyLocal.com



FREE MEMBERSHIP
www.coachmenowners.com



Learn More
Scan this barcode using
a QR Reader on your
smart phone to learn
more about Forest River.



A Berkshire Hathaway company.



Travel Easy™ Roadside Assistance

RVing is easier with Sportscoach's Travel Easy™ Roadside Assistance provided FREE the first year of ownership to those who purchase a New Sportscoach RV. Administered by Coach-Net, this service provides you with 24/7 operational, technical and emergency road service coverage. Also included is towing, fuel delivery, jump starts, lockout service, tire changes, mobile mechanic and unlimited technical assistance. Anywhere. Anytime. Travel Easy™ is the security of knowing that help is an easy phone call away.

Sportscoach RV, a Division of Forest River, Inc.,
A Berkshire Hathaway Company

423 N. Main St., P.O. Box 30, Middlebury, IN 46540

To learn more about Sportscoach RV and our products and see how Sportscoach is making the easy life easier, visit www.sportscoachrv.com