

# OUTBACK

PREMIUM TRAVEL TRAILERS • ULTRA-LITE TRAVEL TRAILERS



KEYSTONE  
RV COMPANY

CAMP BETTER



OUTBACK 340BH



OUTBACK 240URS

## 2023 OUTBACK | EXCEPTIONAL FEATURES

- LUXURY TRAVEL TRAILERS WITH 5TH WHEEL AMENITIES
- USA-MADE NORCO BAL EXTRA-RUGGED, LIGHTWEIGHT FRAME
- ONE-TOUCH, SEVEN-POINT, AUTO-LEVELING (PREMIUM MODELS)
- ELECTRIC STABILIZATION (ULTRA-LITE MODELS)
- **NEW** TIRE PRESSURE MONITORING SYSTEM PREP
- ELEMENTS™ ENHANCED CLIMATE PROTECTION
- BLADE PURE™ HIGH PERFORMANCE AIR FLOW SYSTEM WITH MERV-9 FILTRATION
- HEAT PADS ON TANKS
- GIRARD TANKLESS WATER HEATER
- SOLID SURFACE COUNTERTOPS (PREMIUM MODELS)
- 48" FIREPLACES (PREMIUM MODELS)
- OVERSIZED, FLAT-PANEL HDTVS
- BUILT-IN PET KENNELS
- NEW POP-UP CHARGING STATIONS ON SELECT FLOORPLANS (330RL, 328RL, 292RL)
- SOLARFLEX™ 200 AND 400i SOLAR POWER PACKAGES W/ OPTIONAL DRAGONFLY LITHIUM-ION BATTERIES



"As soon as we stepped in the Outback 335CG we immediately fell in love. We sat in the Thomas Payne recliners and felt right at home! It had the dinette that we were looking for and as an added bonus there was already a kennel for our pup under the bed! We also loved the living space, decor, fireplace, island in the kitchen, and closet space."

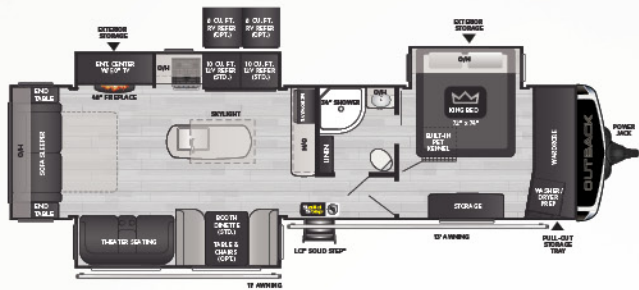


@GET\_LARSON\_LOST — **OUTBACK 335CG OWNERS**

VISIT OUR WEBSITE FOR PHOTOS,  
360° TOURS, AND FULL PRODUCT DETAILS







**328RL**

WEIGHT 8736 LENGTH 37' 7"

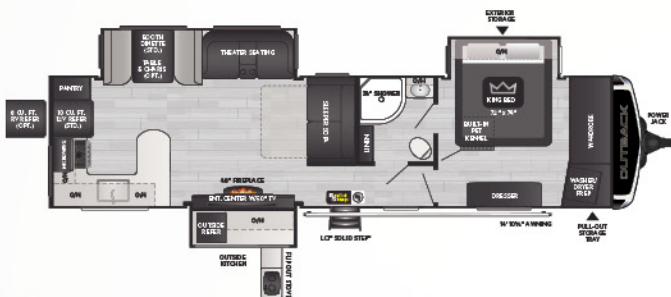
**PREMIUM** • REAR LIVING, THREE SLIDES, DOUBLE REFRIGERATOR



**330RL**

WEIGHT 8751 LENGTH 37' 7"

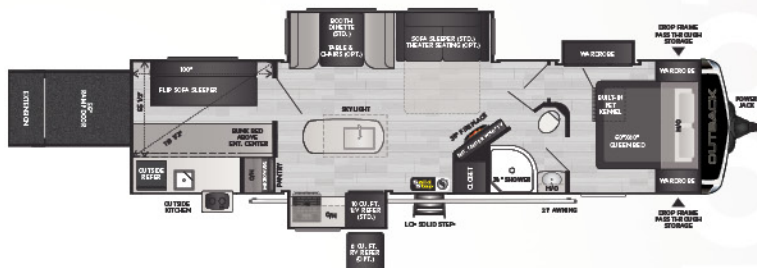
**PREMIUM** • REAR LIVING, THREE SLIDES, OUTSIDE KITCHEN



**332ML**

WEIGHT 8557 LENGTH 37' 10"

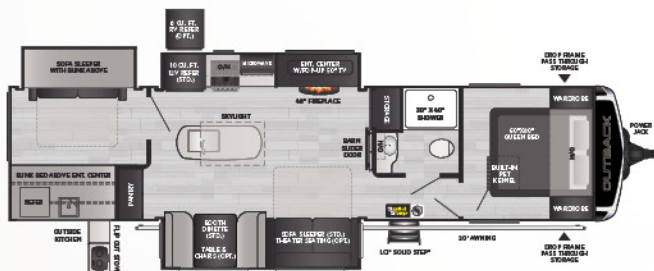
**PREMIUM** • MID-LIVING, THREE SLIDES, OUTSIDE KITCHEN



**335CG**

WEIGHT 8255 LENGTH 37' 0"

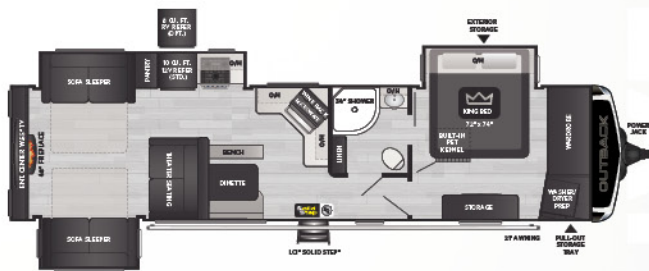
**PREMIUM** • CARGO GARAGE, TWO SLIDES, OUTSIDE KITCHEN



**340BH**

WEIGHT 8815 LENGTH 38' 6"

**PREMIUM** • BUNKHOUSE, THREE SLIDES, OUTSIDE KITCHEN



**341RD**

WEIGHT 8432 LENGTH 38' 1"

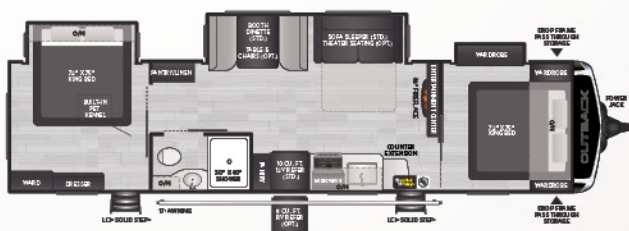
**PREMIUM** • REAR DEN ENTERTAINMENT, THREE SLIDES, 55" TV



**342CG**

WEIGHT 8040 LENGTH 38' 0"

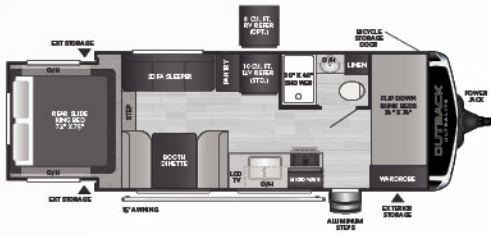
**PREMIUM** • CARGO GARAGE, TWO SLIDES, WHEELCHAIR ACCESSIBLE



**NEW! 343DB**

WEIGHT TBD LENGTH 38' 0"

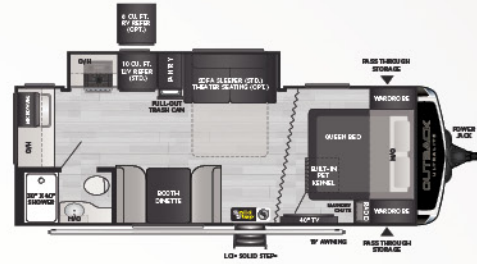
**PREMIUM** • DOUBLE KING BEDROOMS, THREE SLIDES, OPEN LIVING SPACE



## 210URS

WEIGHT 4892 | LENGTH 23' 4"

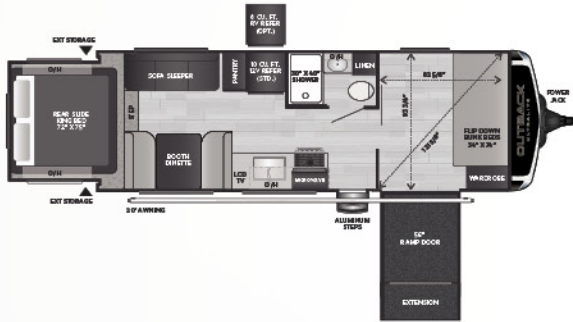
ULTRA-LITE • REAR BEDROOM SLIDE, DOUBLE BUNKS, KING BED



## 221UMD

WEIGHT 5304 | LENGTH 27' 0"

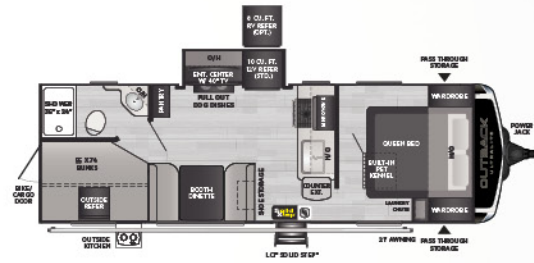
ULTRA-LITE • MID-DINETTE, REAR BATH, QUEEN BED



## 240URS

WEIGHT 5491 | LENGTH 28' 6"

ULTRA-LITE • REAR BEDROOM SLIDE, CARGO GARAGE, KING BED



## 244UBH

WEIGHT 5740 | LENGTH 28' 11"

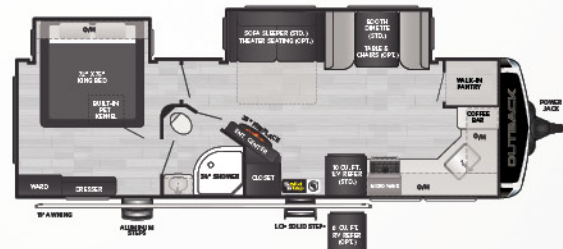
ULTRA-LITE • DOUBLE-OVER-DOUBLE BUNKS, REAR CARGO DOOR, OUTSIDE KITCHEN



## 260UML

WEIGHT 6275 | LENGTH 30' 8"

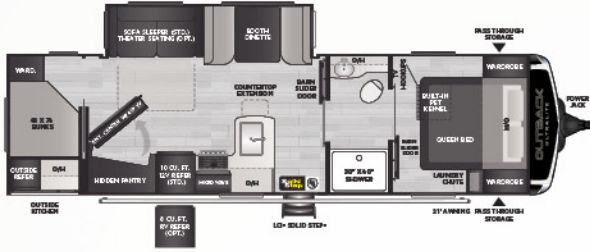
ULTRA-LITE • MID-LIVING ROOM, REAR KITCHEN, LARGE PANTRY



## NEW! 271UFG

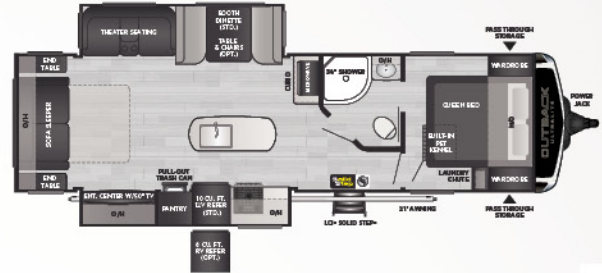
WEIGHT 6770 | LENGTH 31' 10"

ULTRA-LITE • FRONT KITCHEN, KING BED, LARGE PANTRY



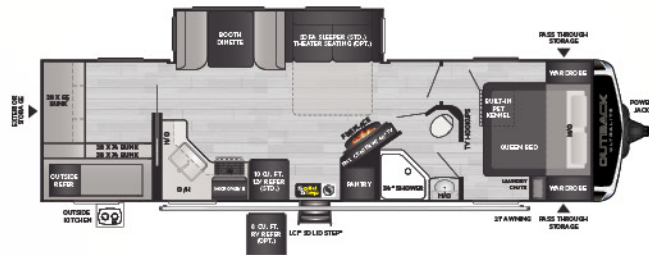
**291UBH** | WEIGHT **6929** | LENGTH **33' 8"**

**ULTRA-LITE** • BUNKHOUSE, HIDDEN PANTRY, OUTSIDE KITCHEN



**292URL** | WEIGHT **7260** | LENGTH **33' 11"**

**ULTRA-LITE** • REAR LIVING, KITCHEN ISLAND, LARGE PANTRY



**302UBH** | WEIGHT **7079** | LENGTH **34' 10"**

**ULTRA-LITE** • REAR BUNKHOUSE, FIREPLACE, OUTSIDE KITCHEN

MODEL	WEIGHT	CARRYING CAPACITY	HITCH WEIGHT	FRESH WATER**	WASTE WATER	GRAY WATER	LPG	LENGTH*	WIDTH	HEIGHT	AWNING
328RL	8736	1764	1075	54	38	76	60	37' 7"	8'	11' 4"	11'/13'
330RL	8751	1749	1100	54	38	76	60	37' 7"	8'	11' 4"	13'
332ML	8557	1943	1020	54	38	76	60	37' 10"	8'	11' 4"	15'
335CG	8255	2245	1155	54	38	76	60	37' 0"	8'	11' 4"	21'
340BH	8815	1685	1040	54	38	76	60	38' 6"	8'	11' 4"	20'
341RD	8432	2068	1045	54	38	76	60	38' 1"	8'	11' 4"	21'
342CG	8040	2460	960	54	38	76	60	38' 0"	8'	11' 4"	17'
343DB	TBD	TBD	TBD	54	38	76	60	38' 0"	8'	11' 4"	21'
210URS	4892	1908	745	54	30	30	60	23' 4"	8'	11' 1"	15'
221UMD	5304	1896	600	54	30	30	60	27' 0"	8'	11' 1"	19'
240URS	5491	2209	755	54	30	30	60	28' 6"	8'	11' 1"	20'
244UBH	5740	1930	670	54	30	60	60	28' 11"	8'	11' 1"	21'
260UML	6275	1325	735	54	30	60	60	30' 8"	8'	11' 1"	21'
271U FK	6770	1120	895	54	30	60	60	31' 10"	8'	11' 1"	19'
291UBH	6929	1271	755	54	30	60	60	33' 8"	8'	11' 1"	21'
292URL	7260	2240	730	54	30	60	60	33' 11"	8'	11' 1"	21'
302UBH	7079	2421	860	54	30	60	60	34' 10"	8'	11' 2"	21'





## TAKE CHARGE OF HOW YOU CAMP

EXCEPTIONAL QUALITY, IMPOSSIBLY VERSATILE, SolarFlex™  
IS SHATTERING CUSTOMER'S EXPECTATIONS OF FACTORY-INSTALLED SOLAR POWER.  
EXCLUSIVELY AVAILABLE ON ALL KEYSTONE RV MODELS.



Relieve battery anxiety with legendary Lithium-ion deep cycle batteries — the ultimate replacement for lead acid. Lightweight, reliable, and longer-lasting, Dragonfly Energy batteries are made in the USA and available exclusively from Keystone RV and authorized dealers.

## MY KEYSTONE OWNER'S APP

THE ONLY APP YOU'LL NEED...

» MANUALS & QUICK START GUIDES

» HOW-TO VIDEOS



» FIRST-TIME CAMPER'S ADVICE

» ACCESS TO YOUR RV'S MOBILE APPS

Available for iOS  
and Android devices.



FOLLOW US FOR THE LATEST!



DISCLAIMER: Product information is as accurate as possible as of the date of publication of this brochure. All features, floor plans, and specifications in this brochure are subject to change without notice. Please also consult Keystone's web site at [www.keystonerv.com](http://www.keystonerv.com) for more current product information and specifications. Tow Vehicle Disclaimer. CAUTION: Owners of Keystone recreational vehicles are solely responsible for the selection and proper use of tow vehicles. All customers should consult with a motor vehicle manufacturer or their dealer concerning the purchase and use of suitable tow vehicles for Keystone products. Keystone disclaims any liability or damages suffered as a result of the selection, operation, use or misuse of a tow vehicle. KEYSTONE'S LIMITED WARRANTY DOES NOT COVER DAMAGE TO THE RECREATIONAL VEHICLE OR THE TOW VEHICLE AS A RESULT OF THE SELECTION, OPERATION, USE OR MISUSE OF THE TOW VEHICLE. \*Length is defined as the distance from the centerline of hitch pin/coupler to rear bumper of trailer. \*\* Fresh water capacity includes water heater. Please review owner's manual prior to purchase for more information on service warranties, extended use, towing and maintenance. Owner's manuals can be found at [keystonerv.com](http://keystonerv.com).

PRINT 09.2022