



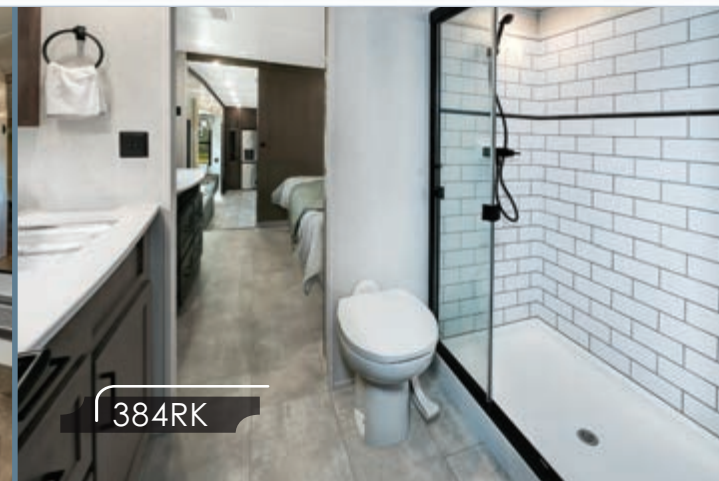
# *Columbus*

BY PALOMINO

# *Columbus*

## TRAVEL WHERE THE ROAD TAKES YOU

Explore new places off the beaten path and arrive at your destination in style in a Columbus 5<sup>th</sup> wheel. Designed with seasonal campers in mind, the Columbus has a distinct residential look. The 101" wide body, drop-frame chassis, residential kitchen and a larger bedroom and bathroom truly create the feeling of a home away from home. Wherever your destination, Columbus has got you covered indoors and on the road.



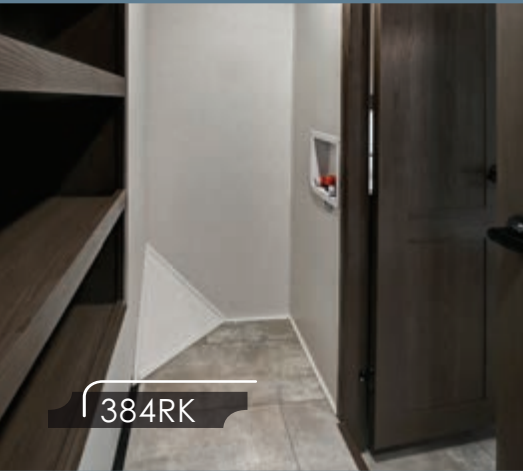


384RK

329DV

329DV





384RK



384RK



329DV

## Construction

- 101" Wide Body
- All Welded Aluminum Frame Superstructure
- Climate Controlled Drop-Frame Storage
- 5/8" Tongue & Groove Plywood Floor
- Residential 5" Radius Wood Truss Roof
- 6' 11" Height Living Area Slides (N/A 388FK)
- Heat Ducts in Out-of-Traffic Areas
- Snap-in Ceiling Molding (No Staples or Tape)
- 12V Heat Pads on All Holding Tanks
- R38 Floor Insulation
- R40 Roof Insulation
- R11 Sidewall Insulation
- MORryde CRE3000 Suspension System
- Vacuum-Bonded Walls with Azdel
- Lippert Axles
- 16" Wheels
- Painted Fiberglass Front Cap
- 3<sup>RD</sup> Ducted A/C Prep
- Rear-View Camera Prep
- Slide Topper Prep

## Interior

- Large, Frameless, Tinted Windows Throughout
- Hidden Hinges
- Soft-Close, Reinforced Doors & Drawers with Upgraded Hardware
- Upgraded Crack, Mold, & Mildew Resistant Flooring
- LED Light Fixtures
- Residential Crown Molding Throughout Unit
- Solid Wood Slide Fascia
- Roller Day/Night Shades (Main Areas Only)
- Solid Wood Steps
- Large Entry Closet for Jacket & Shoe Storage (Selected Models)

## Exterior

- Slam Latches on All Storage Doors
- Magnetic Compartment Door-Holds
- Two-Tone Aluminum Wheels
- Grey Wheel-Well Skirting
- Heated Utility Convenience Center
- Black Tank Flush
- Outside Shower
- Two 30 Lb. LP Tanks
- Entry Door with Window & Screen Door
- Quick Battery Disconnect
- Power Awning with LED Lighting
- 7000 Lb. Axles
- Crank-Down Spare Tire
- 2" Hitch Receiver
- Tire Pressure Monitoring System

## Kitchen

- Full Pantry (N/A 388FK)
- Upgraded True Solid-Surface Countertops
- Trash Can with Dedicated Storage (Select Models)
- Rollaway Sink Covers
- Residential Under-Counter Storage
- Residential Backsplash
- Additional Lighting Above Sink Area
- Deep-Bowl Stainless Steel Sink
- Single-Lever Faucet with Pull-Out Sprayer

## Bedroom

- 15,000 BTU Coleman Bedroom Serenity A/C
- 32" Bedroom TV
- Pressed Dresser Top
- Plush Pillow Top Mattress
- Mirrored, Sliding Closet Doors
- High-End Bedspread & Pillows
- Reading Lights with USB Charging Ports

## Bathroom

- Large, Signature Spa Shower Surround with Teak Wood Flip-Up Seat (Select Models)
- Solid-Surface Counter Top
- Three-Speed Power Vent
- Porcelain Toilet
- Shower Skylight

## Furniture

- Power Theater Seat with Storage & USB Charging
- 50/50 Split 88" Sleeper Sofa (Per Model)
- Pressed Wood Countertops
- Residential High-End Dining Chairs

## Appliances

- 20 Cu. Ft. Residential Refrigerator with Ice Maker & 1000W Inverter
- Insignia 4-Burner Gas Cooktop (N/A 388FK)
- Insignia 24" Residential Oven (N/A 388FK)
- 50" TV with Built-in Soundbar
- 12 Gal Water Heater with Quick Recovery
- Washer/Dryer Prep
- Full-System Water Purifier
- 30" Residential Microwave
- (2) 15,000 BTU Coleman Serenity A/Cs with Bedroom Heat Pump
- 35,000 BTU Furnace
- Omni-Directional Rooftop Antenna with 4G LTE/Wi-Fi Prep
- 50 Amp Converter w/Built-in Charge Wizard

## Options

- Stackable Washer/Dryer
- Dual-Pane Windows
- Full-Body Paint
- Slide Toppers
- 18 Cu. Ft. Gas/Electric Refrigerator
- 17.5" Goodyear H-Rated Tires with Upgraded Rims
- Generator Prep
- 200W Solar Panel
- 3<sup>RD</sup> 15,000 BTU A/C Install
- 5.5KW Onan Generator

## 1492 PACKAGE

- Wall-Mounted, Free-Standing Dinette Table with Extension
- Two Residential Dinette Chairs
- Two-Tone Painted Front Cap
- 50" LED TV
- 32" Bedroom TV
- Large, Signature Spa Walk-in Shower with Teak Wood Flip-Up Seat *(Select Models)*
- MCD Day/Night Roller Shades
- Hybrid Carpet
- Aluminum-Framed Bed Base with King Bed
- Power Theater Seating with USB Charging
- 50/50 Split Sleeper Sofa
- Upgraded Residential Hardware
- Deep-Bowl Stainless Steel Kitchen Sink
- Ceiling Fan in Living Room
- Stainless Steel Residential Appliance Package Featuring 20 Cu. Ft. Residential Refrigerator with Ice Maker
- Washer/Dryer Prep
- Porcelain Toilet
- Large Kitchen Pantry *(Select Models)*
- Electric Fireplace
- Kitchen Maxx Air Vent with Rain Hood
- Pop-Up Receptacles
- Two Folding Chairs
- Wood-Look Linoleum
- Dishwasher Prep *(N/A 388FK)*

## VOYAGER PACKAGE

- 6-Point Hydraulic Leveling System
- MORryde CRE3000 Suspension
- 7000 Lb. Axles
- Two-Tone Aluminum Wheels
- G-Rated Tires with G-Rated Spare
- MORryde Upgraded Pinbox
- High-Gloss Fiberglass with Azdel Onboard
- Two-Tone Painted Front Cap
- Two 15,000 BTU Quietcool Serenity A/C Units
- 12 Gal Water Heater
- Power Cord Storage Reel
- 2" Hitch Receiver
- Tire Pressure Monitoring System
- Frameless Windows
- Quick Battery Disconnect
- 12V Heat Pads on Tanks
- LED Awning Lights
- MORryde Strut-Assist Stepabove Entry Steps
- Syphon 360 Vent Covers
- Screenless One Control® Operating System
- Wi-Fi Booster with 4G LTE Capability Prep
- Ladder
- LP Quick Connect
- Back Up Camera Prep
- Slide Topper Prep
- Go Power Solar Prep
- Metal-Wrapped Awning



299RL



|                   |                |              |                |                  |
|-------------------|----------------|--------------|----------------|------------------|
| <b>Dimensions</b> | Length: 36' 1" | WIDTH: 101"  | HEIGHT: 13' 6" | AWNING: 10', 16' |
| <b>Weights</b>    | UVW: 11284     | GVWR: 15880  | CCC: 4596      | HITCH: 2180      |
| <b>Tanks</b>      | Fresh: 75 Gal  | GRAY: 78 Gal | BLACK: 39 GAL  |                  |

329DV



|                   |                |              |                |                  |
|-------------------|----------------|--------------|----------------|------------------|
| <b>Dimensions</b> | Length: 37' 6" | WIDTH: 101"  | HEIGHT: 13' 6" | AWNING: 10', 17' |
| <b>Weights</b>    | UVW: 11964     | GVWR: 14962  | CCC: 2998      | Hitch: 2035      |
| <b>Tanks</b>      | Fresh: 75 Gal  | GRAY: 71 Gal | BLACK: 39 GAL  |                  |

375BH



*DS Slide Option*



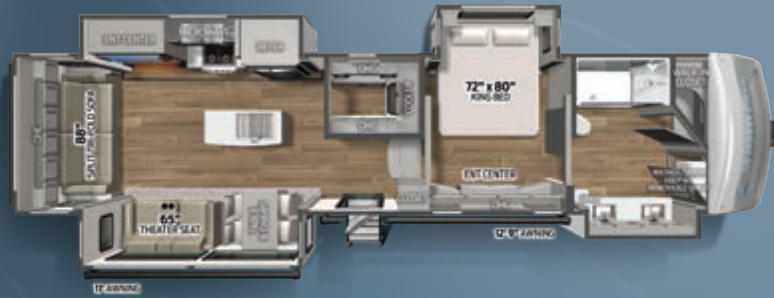
|                   |                 |               |                |                  |
|-------------------|-----------------|---------------|----------------|------------------|
| <b>Dimensions</b> | Length: 42' 11" | WIDTH: 101"   | HEIGHT: 13' 6" | AWNING: 11', 16' |
| <b>Weights</b>    | UVW: 13110      | GVWR: 16755   | CCC: 3586      | HITCH: 2755      |
| <b>Tanks</b>      | Fresh: 75 Gal   | GRAY: 117 Gal | BLACK: 78 GAL  |                  |

379MB



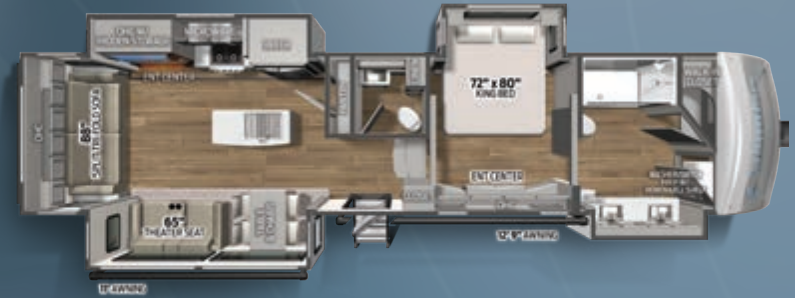
|                   |                |              |                |                  |
|-------------------|----------------|--------------|----------------|------------------|
| <b>Dimensions</b> | Length: 41' 2" | WIDTH: 101"  | HEIGHT: 13' 6" | AWNING: 11', 20' |
| <b>Weights</b>    | UVW: 12624     | GVWR: 15580  | CCC: 2956      | HITCH: 2100      |
| <b>Tanks</b>      | Fresh: 75 Gal  | GRAY: 71 Gal | BLACK: 39 GAL  |                  |

382FB



|                   |                |              |                |                  |
|-------------------|----------------|--------------|----------------|------------------|
| <b>Dimensions</b> | Length: 41' 2" | WIDTH: 101"  | HEIGHT: 13' 6" | AWNING: 11', 12' |
| <b>Weights</b>    | UVW: 13122     | GVWR: 16150  | CCC: 3028      | HITCH: 2573      |
| <b>Tanks</b>      | Fresh: 75 Gal  | GRAY: 78 Gal | BLACK: 39 GAL  |                  |

383FB



|                   |                |              |                |                  |
|-------------------|----------------|--------------|----------------|------------------|
| <b>Dimensions</b> | Length: 41' 2" | WIDTH: 101"  | HEIGHT: 13' 6" | AWNING: 11', 12' |
| <b>Weights</b>    | UVW: 13322     | GVWR: 16150  | CCC: 2828      | HITCH: 2573      |
| <b>Tanks</b>      | Fresh: 75 Gal  | GRAY: 78 Gal | BLACK: 78 GAL  |                  |

384RK



|                   |                |              |                |                  |
|-------------------|----------------|--------------|----------------|------------------|
| <b>Dimensions</b> | Length: 42' 2" | WIDTH: 101"  | HEIGHT: 13' 6" | AWNING: 11', 18' |
| <b>Weights</b>    | UVW: 12819     | GVWR: 16600  | CCC: 3781      | HITCH: 2600      |
| <b>Tanks</b>      | Fresh: 75 Gal  | GRAY: 78 Gal | BLACK: 71 GAL  |                  |

388FK



|                   |                 |              |                |                |
|-------------------|-----------------|--------------|----------------|----------------|
| <b>Dimensions</b> | Length: 41' 11" | WIDTH: 101"  | HEIGHT: 13' 6" | AWNING: 18' 6" |
| <b>Weights</b>    | UVW: 13744      | GVWR: 16743  | CCC: 2999      | HITCH: 2367    |
| <b>Tanks</b>      | Fresh: 75 Gal   | GRAY: 75 Gal | BLACK: 39 GAL  |                |

# PALOMINO

COLUMBUS BY PALOMINO  
 A Division Of Forest River, Inc.  
 105-1/2 C.R. 14 • Middlebury, In 46540  
[www.palominorv.com](http://www.palominorv.com)



Follow us!  
 #RVBOUND



## Specification Definitions

**GVWR (Gross Vehicle Weight Rating):** is the maximum permissible weight of the unit when fully loaded. It includes all weights, inclusive of all fluids, cargo, optional equipment and accessories. For safety and product performance do NOT exceed the GVWR.  
**GAWR (Gross Axle Weight Rating):** is the maximum permissible weight, including cargo, fluids, optional equipment and accessories that can be safely supported by a combination of all axles. **UVW (Unloaded Vehicle Weight):** is the typical weight of the unit as manufactured at the factory. It includes all weight at the unit's axle(s) and tongue or pin and LP Gas. The UVW does not include cargo, fresh potable water, additional optional equipment or dealer installed accessories. **CCC (Cargo Carrying Capacity):\*** is the amount of weight available for fresh potable water, cargo, additional optional equipment and accessories. CCC is equal to GVWR minus UVW. Available CCC should accommodate fresh potable water (8.3 IWW per gallon). Before filling the fresh water tank, empty the black and gray tanks to provide for more cargo capacity. Each Forest River RV is weighed at the manufacturing facility prior to shipping. A label identifying the unloaded vehicle weight of the actual unit and the cargo carrying capacity is applied to every Forest River RV prior to leaving our facilities. The load capacity of your unit is designated by weight, not by volume, so you cannot necessarily use all available space when loading your unit.

All information contained in this brochure is believed to be accurate at the time of publication. However, during the model year, it may be necessary to make revisions and Forest River, Inc., reserves the right to make all such changes without notice, including prices, colors, materials, equipment and specifications as well as the addition of new models and the discontinuance of models shown in this brochure. Therefore, please consult with your Forest River dealer and confirm the existence of any materials, design or specifications that are material to your purchase decision. © 2022 Palomino RV, a Division of Forest River, Inc., a Berkshire Hathaway Company. 11/01 Columbus

\*Estimated Average based on standard build optional equipment



### 24/7 EMERGENCY ROADSIDE ASSISTANCE WITH VEHICLE PURCHASE\*

- |                |                 |
|----------------|-----------------|
| TOWING         | WINCH-OUT       |
| JUMP-STARTS    | MOBILE MECHANIC |
| TIRE CHANGES   | TECHNICAL       |
| FLUID DELIVERY | SUPPORT         |
| LOCKOUT        | DEALER LOCATOR  |
| SERVICE        | SERVICES        |



\*VALID FOR 1 YEAR FROM DATE OF PURCHASE



### PRE-DELIVERY INSPECTION FACILITY

20,000 square feet of quality assurance. The bare essentials for a premium product. This state-of-the-art facility gives immediate daily feedback to production for quality assurance in every unit built.

### CUSTOMER SATISFACTION



[www.ForestRiverBuyLocal.com](http://www.ForestRiverBuyLocal.com)



Learn More  
 Scan this barcode using a QR Reader on your smart phone to learn more about Forest River.



A Berkshire Hathaway company.

**FREE MEMBERSHIP**  
 to Forest River Owners' Group

[www.forestriverfrog.com](http://www.forestriverfrog.com)



### FOREST RIVER OWNER "DIGITAL KIT" APP

Now you can have your Owner's Manual with you wherever you are. Download our FREE App from the App Store or Google Play and you'll have the information right at your fingertips.

