

1999 SUNRISE® SERIES

SUNRISE SE

SUNRISE



32T

You've never seen a

The 1999 Itasca Sunrise series provides more of what you're looking for in a motor home. More room, comfort, value and choices. The Sunrise SE and Sunrise lineup includes six widebody, basement storage models to choose from, each one offering something different. So if you haven't seen a Sunrise lately, take a look. You're bound to find one that works for you.

SUNRISE

Our three Sunrise models offer widebody comfort and full basement, pass-through storage at a very attractive price. You'll even find a slideout available on the 35C, featuring our revolutionary **STOREMORE™** Hydraulic Slideout System, which allows you to quickly increase interior space without having to sacrifice storage. You'll also appreciate our **POWERLINE™** Energy Management System, available on the 32T and 35C. This fully automated system has the ability to run two high efficiency air conditioners and numerous electrical loads at the same time when utilizing 30 amp. service by monitoring the usage of 120 volt power and redistributing it as needed.



The bathroom includes a shower with skylight, easy-cleaning vinyl flooring, recessed towel rack and plenty of cabinet space.

Sunrise goes far beyond custom-crafted furniture and professionally designed fabrics and carpet. For maximum comfort, each model features a 3 1/4" thick roof with ducted roof AC. All cabinets feature solid wood doors.



Sunrise like this before.

SUNRISE SE

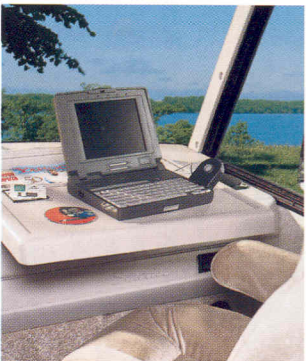
Our three Sunrise SE models offer travelers the perfect combination of comfort and floorplan flexibility in a value priced motor home with basement storage (not to mention heated holding tanks).



The available Comfort and Convenience Package includes halogen lights in the lounge overhead cabinets, make-up lights in the bathroom, a wall clock and beveled wood edging on the galley and dinette countertops, just to name a few items.



Like all Sunrise models, the Sunrise SE includes many features you won't find on most other manufacturer's motor homes, like a seamless fiberglass roof and select appliances mounted to steel tie-downs for added safety.

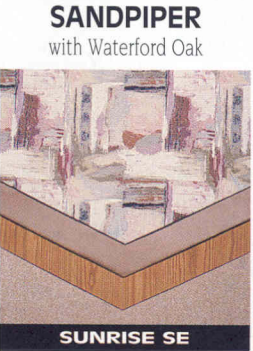
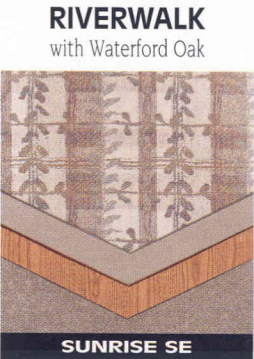
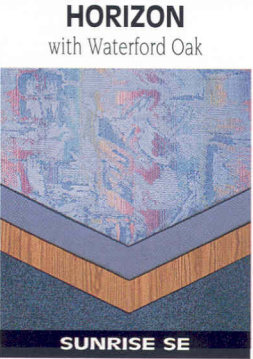
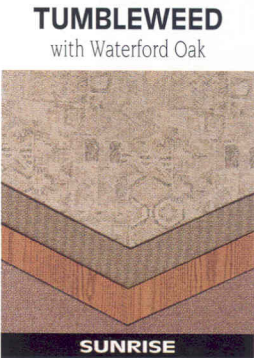
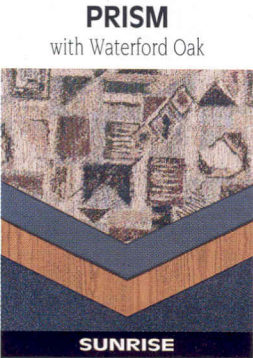
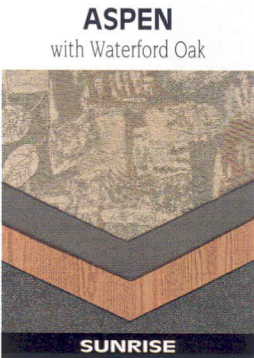
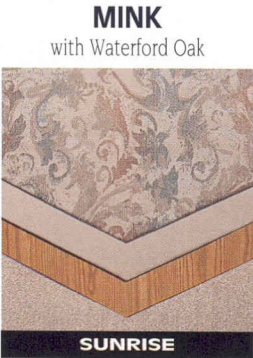


The available workstation quickly pulls out, providing the perfect working environment for a laptop computer.

This bedroom features a TV shelf, an innerspring mattress and dual shirt closets with nightstands below. Professionally designed fabrics nicely coordinate with the cabinetry.

SUNRISE SERIES DECOR OPTIONS

All fabrics selected for use in the Sunrise series must pass a series of tests to ensure strength and durability. Just one example is the double rub test, which mechanically simulates a person getting in and out of a seat up to 30,000 times to see how the fabrics wear.



Our professional interior designers pride themselves on selecting color schemes and patterns that will look great for years to come.

Main
Accent
Wood
Carpet

Choose from Over 20 Floorplan Combinations.



32T

While our smooth, one-piece fiberglass exterior is certainly good looking, the advantages of this design go far beyond mere aesthetics. This outer skin is laminated to a rigid luan backing material. A layer of block foam insulation is applied over this backing material. This insulation is then routed to embed the welded aluminum framework. The result is one of the most durable, rigid sidewall constructions in the industry.

Thanks to our exclusive **STOREMORE™** Hydraulic Slideout System design you don't have to sacrifice storage space when you purchase a slideout. Inside and out, you'll enjoy easy access compartments with a surprisingly generous amount of room for your gear. You won't find undersized or non-functional storage areas behind our compartment doors. (Others install compartment doors solely for aesthetic purposes.) We added convenience by equipping the fully hinged and insulated belt-line storage doors with a single handle latch for easy one-handed opening.



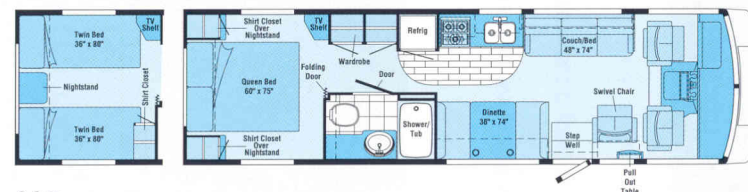
35C

SUNRISE



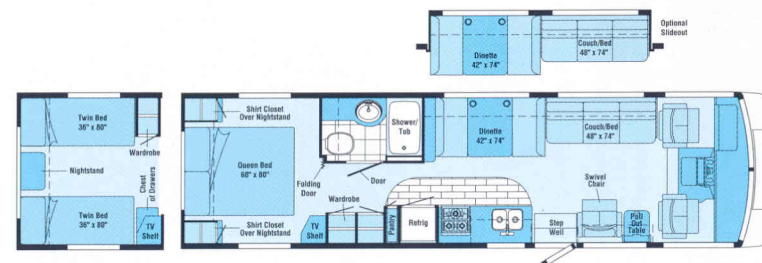
30A

Nowhere is floorplan flexibility more evident than in the 30A. Floorplan options include an available forward facing couch with twin swivel chairs in the living area.



32T

This sensible floorplan includes plenty of living and storage space. A large wardrobe is conveniently located across the aisle from the bathroom.



35C

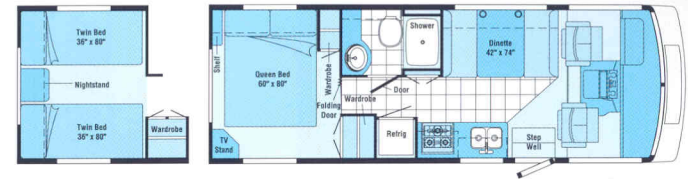
Our largest Sunrise includes an available slideout in the living area and a double wardrobe.



31B

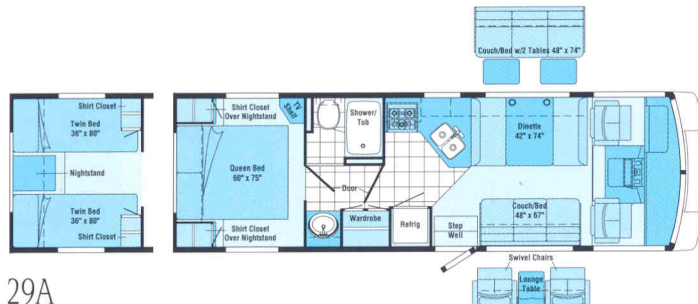
Sunrise SE's contemporary styling includes eye catching graphics and an aerodynamic front end. An available awning provides cover from the elements and easily retracts to the aluminum awning rail when not in use.

SUNRISE SE



26P

Travel is more convenient with easy cleaning vinyl flooring and large amounts of interior storage space. Includes a queen or available twin beds.



29A

Many possible floorplan configurations, along with a unique angled galley set this model apart.



31B

The roomy living area comes complete with couch, swivel chair and dinette. Includes a queen or available twin beds.



Standard
Vinyl Flooring



Standard Vinyl
Plank Flooring

Note: Dimensions shown are for sleeping space only and dashed lines denote overhead storage areas.

1999 Sunrise Series Specifications

	Sunrise SE			Sunrise		
	26P	29A	31B	30A	32T	35C
Length	26'5"	30'	31'11"	30'11"	32'6"	35'3"
Exterior Width Δ	8'5.5"	8'5.5"	8'5.5"	8'5.5"	8'5.5"	8'5.5"
Interior Height	6'8"	6'8"	6'8"	6'8"	6'8"	6'8"
Interior Width	8'0.5"	8'0.5"	8'0.5"	8'0.5"	8'0.5"	8'0.5"
Fuel Capacity (gal.) - Ford/Chev	NA/40	75/75	75/75	75/75	75/75	75/75
Fresh Water Capacity w/Heater (gal.)*	56	71	71	85	85	67
Holding Tank Capacity (gal.) - Black/Gray	35/43	30/34	30/34	55/56	49/50	40/50
LP Capacity (gal.) \diamond	23	23	23	23	23	28
Wheelbase - Ford/Chev	NA/158.5"	178"/178"	190"/190"	190"/190"	208"/208"	228"/220"
Exterior Height w/AC - Ford/Chev*	NA/11'3"	11'4"/11'4"	11'4"/11'4"	11'10"/11'9"	11'10"/11'9"	11'9"/11'8"
Exterior Storage (cu. ft.)	46.2	112.9	117.3	124.5	137.2	142
GVWR (lbs.) - Ford Option/Ford Option	NA/NA	15,700 ^f /NA	15,700 ^f /18,000	15,700 ^f /18,000	18,000/NA	20,500/NA
GVWR (lbs.) - Chev/Chev Option	12,300 ^f /14,800	14,800/NA	14,800/NA	14,800/NA	16,500/NA	16,500/NA

AUTOMOTIVE

	Sunrise SE			Sunrise		
	26P	29A	31B	30A	32T	35C
Chassis - Chevrolet 7.4L Vortec V8 @ 290-HP, 124-Amp. Alternator, Anti-Lock Brake System	S	S	S	S	S	S
Chassis - Ford 6.8L Triton V10 @ 275-HP, 130-Amp. Alternator		O	O	O	O	O
Shocks/Stabilizer Package Front, Chevrolet	O	O	O	O	O	O
Tires (Radial) w/Spare	S	S	S	S	S	S

DRIVER CONVENIENCES

	26P	29A	31B	30A	32T	35C
Battery Charge Control w/Battery Disconnect Dual, Auto.	S	S	S	S	S	S
Cab Seats w/3-Point Retracting Seat Belts Reclining High-Back Design, Hinged Armrests, Lumbar Support, Swivel/Slide Pedestal	S	S	S	S	S	S
Cigarette Lighter/12-V Electrical Supply	S	S	S	S	S	S
Cruise Control	S	S	S	S	S	S
Curtain w/Track Front Wrap-Around	S	S	S	S	S	S
Convenience Tray	S	S	S	S	S	S
Heating/Air Conditioning Automotive Blend Air System	S	S	S	S	S	S
Hood Release Exterior Key Locks	S	S	S	S	S	S
Lap Belts in Designated Areas	S	S	S	S	S	S
Map Light, Map Pockets & Floor Mats	S	S	S	S	S	S
Mirrors (Exterior) Low Mounted	S	S	S	S	S	S
Mirrors (Exterior) Low Mounted, Electric Remote w/Defrost	O	O	O	O	O	O
Rear View Monitor System (Videoman), Video/One-Way Audio	O	O	O	O	O	O
Start Circuit Auxiliary	S	S	S	S	S	S
Steering Power Assisted w/Tilt Wheel	S	S	S	S	S	S
Storage Cabinet (Front Overhead)	S	S	S	S	S	S
Sunvisors	S	S	S	S	S	S
Windows Sliding, w/Screens	S	S	S	S	S	S
Windshield Wipers (Intermittent)	S	S	S	S	S	S
Work Station Pull-Out, Pass. Side, Dash	O	O	O	O	O	O

ENTERTAINMENT

	26P	29A	31B	30A	32T	35C
Entertainment Center (Patio)* DC Receptacle, AC Duplex Receptacle, 110-V Outlet, TV Jack, Radio Antenna, w/AM/FM Cassette or CD, Speakers (2), Removable TV Table, Locking Door	O	O	O	O	O	O
Satellite System Pre-Wiring	S	S	S	S	S	S
Stereo Power Switch For Main or Auxiliary Battery Use	S	S	S	S	S	S
Stereo w/Cassette Deck (Cab) AM/FM, w/Speakers (4), Roof-Mounted Flexible Rubber Antenna	S	S	S	S	S	S
Stereo w/CD Player (Cab) AM/FM, w/Speakers (4), Roof-Mounted Flexible Rubber Antenna	O	O	O	O	O	O

TV* Front (19" Color) w/Remote Video Selection System

TV* Front (19" Color) w/Remote & VCR Video Selection System

TV Enhancement Package* Antenna (Amplified), DC Receptacles (2), Interior Jacks (2), Coax Wiring, Cable Input, TV Shelf or Stand

	Sunrise SE			Sunrise		
	26P	29A	31B	30A	32T	35C
TV* Front (19" Color) w/Remote Video Selection System	O	O	O	O	O	O
TV* Front (19" Color) w/Remote & VCR Video Selection System	O	O	O	O	O	O
TV Enhancement Package* Antenna (Amplified), DC Receptacles (2), Interior Jacks (2), Coax Wiring, Cable Input, TV Shelf or Stand	S	S	S	S	S	S

SLIDEOUT

Slideout Room (Driver's Side Couch/Dinette)* Overhead Cabinets, Exterior Room Cover, Compartments Slide Out w/Room, Includes Hydraulic Leveling Jacks

	26P	29A	31B	30A	32T	35C
Slideout Room (Driver's Side Couch/Dinette)* Overhead Cabinets, Exterior Room Cover, Compartments Slide Out w/Room, Includes Hydraulic Leveling Jacks						O

INTERIOR

	26P	29A	31B	30A	32T	35C
Cabinet Doors Wood Stile & Rail Raised Panel on Upper Cabinets	S	S	S	S	S	S
Carpeting w/Pad Stain Resistant	S	S	S	S	S	S
Ceiling Lights	S	S	S	S	S	S
Ceiling Vent Non-Powered, Lounge, Galley, Bedroom	S	S	S	S	S	S
Ceiling Vent Powered, Bathroom	S	S	S	S	S	S
Courtesy Lights (2)	S	S	S	S	S	S
Color Themes (Interior) Choice of Sandpiper (Tan), Horizon (Blue), Riverwalk (Taupe)	S	S	S			
Color Themes (Interior) Choice of Mink (Taupe), Aspen (Green), Prism (Blue), Tumbleweed (Sand)				S	S	S
Comfort & Convenience Package Add - Wall Clock, Make-Up Lights, Exchange - Beverage Tray, Halogen Lights in Lounge*, Wood Beveled Edge on Dinette Table & Galley Countertops, Upgraded Exterior Graphics	O	O	O	O	O	O
Lamp Decorator Style, Wall-Mounted in Lounge			S		S	S
Powered Ventilator Fan (Lounge - 30A, Galley - 32T, 35C)				O	O	O
Wardrobe Mirrored Doors, Carpeted Floor, Upper Shelf, Clothes Rod	S	S	S	S	S	S
Windows Tinted	S	S	S	S	S	S
Windows* (Sliding) Dual Glazed, Thermo-Insulated (Tip-Out in Bedroom)	O	O	O	O	O	O

GALLEY

	26P	29A	31B	30A	32T	35C
Coffee Maker	O	O	O	O	O	O
Counter Extension Flip-Up	S			S		
Flooring (Vinyl)	S	S	S			
Flooring (Vinyl Plank)				S	S	S
Galley Rail	S	S	S	S	S	
Microwave Oven Touch Control	S	S	S	S	S	S
Mirror Wall-Mounted in Dining Area			S			

	Sunrise SE			Sunrise		
	26P	29A	31B	30A	32T	35C
Pantry	S			S		S
Range Hood w/Light, Powered Vent	S	S	S	S	S	S
Range w/Oven 3 Burners	S	S	S	S	S	S
Refrigerator/Freezer Double-Door	S	S	S	S	S	S
Sink (Double) Stainless Steel, Recessed w/Cover(s), Single Control Faucet	S	S	S	S	S	S
Storage below Dinette Seat	S	S	S	S	S	S
Wall Border Decorative	S	S	S	S	S	S

BEDROOM	26P	29A	31B	30A	32T	35C
Beds spread(s), Pillows, Pillow Shams	S	S	S	S	S	S
Lamp(s)* Decorator Style, Wall-Mounted	S	S	S	S	S	S
Mattress* (Serta®) Innerspring	S	S	S	S	S	S
Wall Border Decorative				S	S	S

BATHROOM	26P	29A	31B	30A	32T	35C
Flooring (Vinyl)	S	S	S	S	S	S
Hamper					S	S
Lavatory Cabinet	S	S	S	S	S	S
Linen Cabinet	S	S	S	S	S	S
Magazine Rack			S	S		
Medicine Cabinet	S	S	S	S	S	S
Mirror Wall-Mounted	S		S	S	S	S
Shelf Rear Bath Wall			S			
Shower Flexible Shower Head	S		S			
Shower/Tub Flexible Shower Head		S		S	S	S
Shower Door Pleated, w/Track	S	S	S	S	S	S
Sink Rectangular, Molded Soap Dishes			S			
Sink Large Oval, Ledge Back	S	S		S	S	S
Skylight w/Light (Shower Area)	S	S	S	S	S	S
Toilet (Marine Style) & Tissue Holder	S	S	S	S	S	S
Towel Bar	S	S	S	S	S	S
Towel Rack (3) Recessed into Door	S	S	S	S	S	S
Towel Ring	S	S			S	

EXTERIOR	26P	29A	31B	30A	32T	35C
Awning Rail	S	S	S	S	S	S
Awning (Patio)*	O	O	O	O	O	O
Bumpers Front: Integrated into Front Cap, Rear: Aluminum w/End Caps	S	S	S	S	S	S
Entrance Door w/Screen Door Latch & Deadbolt Lock	S	S	S	S	S	S
Entrance Door Step (Electric) w/Door Jamb Switch, Single	S	S	S			
Entrance Door Steps (Electric) w/Door Jamb Switch, Double				S	S	S
Holding Tanks Heated Compartment	S	S	S	S	S	S
Ladder	S	S	S	S	S	S
Lower Exterior Paint				S	S	S
Outlet 110-V, Curbside	S	S	S	S	S	S
Porch Light Interior Switch	S	S	S	S	S	S
Sewer Hose & Storage Compartment	S	S	S	S	S	S
Storage Compartments w/Trunk Liner, Steel Construction, Locking Doors	S	S	S	S	S	S
Tire Tools Wrench, Leverage Bar	S	S	S	S	S	S
Trailer Towing Package w/Hitch (5,000 lb. Rating)	S	S	S	S	S	S
Trunk*				S	S	S
Wash Station Pullout w/Water Pump Switch	S	S	S	S	S	S
Water Fill Door Lockable	S	S	S	S	S	S
Water Hook-Up	S	S	S	S	S	S
Wheel Covers & Rear Mud Flaps	S	S	S	S	S	S
Wheel Liners Stainless Steel	O	O	O	O	O	O

SYSTEMS	Sunrise SE			Sunrise		
	26P	29A	31B	30A	32T	35C
Air-Conditioning Pre-Wiring Roof	S	S	S	S	S	S
Air-Conditioner* (Coleman) Roof, 14,800-BTU	O	O	O	O	O	
Air-Conditioners* (Coleman) Roof, Front/Rear: 13,500/13,500-BTU			O		O	O
Air-Conditioners (2)* (Coleman) Roof, High Efficiency w/Energy Management System					O	O
Batteries (2) Deep Cycle RV	S	S	S	S	S	S
Electrical Control Center 110-V AC/12-V DC, 9-Amp. Batt. Charger, 45-Amp. Converter, DC Fuses, AC Breakers	S	S	S	S		
Electrical Distribution System AC Breakers, DC Breakers, 45-Amp. Converter/Charger					S	S
Furnace Ducted, Low Profile, 30,000-BTU	S	S				
Furnace Ducted, Low Profile, 35,000-BTU			S	S	S	
Furnace Ducted, Low Profile, 40,000-BTU						S
Generator Prep Kit Fuel Line, 12-V Wiring	S	S	S	S	S	S
Generator* (Onan) 4,000-Watt	O	O	O	O	O	
Generator* (Onan) 5,000 or 6,500-Watt			O		O	O
Inverter* 130-Watt for TV/VCR	O	O	O	O	O	O
LP Tank Permanent Mount w/Gauge	S	S	S	S	S	S
Monitor Panel Water, Holding & LP Tank Levels, Battery Condition Gauge, Water Heater Ignition Switch w/Pilot Indicator Light, Water Pump Switch, Located in Galley	S	S	S	S	S	S
Power Cord 30-Amp.	S	S	S	S	S	S
Service Center Provides Access to Sewer Compartment, Exterior Shower, City Water Hook-Up				S	S	S
Service Center Electrical, Cable TV Input, Power Cord				S	S	S
Water Heater 6-gal., Electronic Ignition, Motoraid & Rear Automotive Heater	S	S	S	S	S	S
Water Heater Winterization By-Pass Valve	S	S	S	S	S	S
Water Pump (Demand)	S	S	S	S	S	S
Water System Winterizing Valve	S	S	S	S	S	S
Water System Drain Thru Floor				S	S	S

SAFETY	26P	29A	31B	30A	32T	35C
3-Point Cab Seat Belts	S	S	S	S	S	S
Assist Handle Interior & Exterior*	S	S	S	S	S	S
Assist Strap Interior	S	S	S	S	S	S
Carbon Monoxide Detector/Alarm, Fire Extinguisher (10-B.C.), Ground Fault Interrupter, LP Leak Detector/Alarm, Smoke Detector/Alarm	S	S	S	S	S	S
Escape Window	S	S	S	S	S	S
Lap Belts in Designated Areas	S	S	S	S	S	S
Rear High Mount Brake Light	S	S	S	S	S	S
Windshield Laminated Safety Glass	S	S	S	S	S	S

WARRANTY	26P	29A	31B	30A	32T	35C
12 Month/15,000 Mile Basic Warranty, 36 Month/36,000 Mile Warranty on Structure**, 10 Year Limited Parts & Labor Warranty on Roof	S	S	S	S	S	S

△ The Sunrise floorplans feature a widebody design — over 96". In making your purchase decision, you should be aware that some states restrict access on some or all state roads to 96" in body width. Before making your purchase decision, you should confirm the road usage laws in the states of interest to you.

NA Not Available

* Not all options available in combination. See dealer for details.

◇ Capacities shown are tank manufacturer's listed water capacity (W.C.). Actual filled LP capacity is 80% of listing due to safety shut-off required on tank.

• The height of each model is based on the curb weight of a typically equipped unit on the standard chassis. The actual height of your vehicle may vary by as much as 2' depending on chassis or equipment variations.

† Available mid-August 1998

S Standard

O Optional

** See your dealer for complete warranty documentation information.

Winnebago Industries' continuing program of product improvement makes specifications, equipment, model availability and prices subject to change without notice. Comparisons to other motor homes are based on the most recent information available.

A Few More Details.



1999 SUNRISE.

IT'S A FEATURE PRESENTATION.

- Select appliances are secured with steel tie-downs, an exclusive Winnebago Industries safety feature. It's not something we're required to do. It just makes sense.
- Interior paneling is laminated with a unique hot melt adhesive proven to resist moisture and delamination.
- The Sunrise vehicles are truly versatile. One example of this is the 3 1/4" thick roof, which has an R factor of 14.62. The roof's one-piece fiberglass outer skin adds structural integrity, doesn't expand and contract like rubber membranes, and is far more durable. This design is so strong, it's backed by a 10-year parts and labor limited warranty.
- To maintain the highest quality, Winnebago Industries manufactures the majority of the components found in the Sunrise series. All components which aren't manufactured by Winnebago Industries must pass a series of stringent quality control tests before being specified for use in our motor homes.
- Safety features include pantograph windshield wipers for better cleaning, center brake light and an available Videoman® rearview monitor with audio feature on several models.
- Our popular exterior entertainment center includes a pull-out table, AM/FM cassette with auto reverse or an available AM/FM CD player.
- Superior Warranty Coverage:
 - Transferable 12 month/15,000 mile limited warranty.
 - 36 month/36,000 mile warranty on structure.**
 - 1 yr. Premium Roadside Assistance from Winnebago Industries.
 - 10 yr. roof material limited warranty - parts and labor.

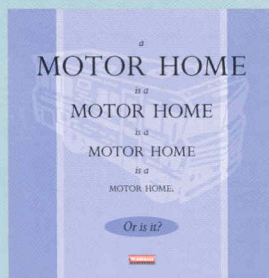
Winnebago Industries has been designated a "Qualified Vehicle Modifier" by Ford Motor Company. The QVM program promotes high standards for manufacturers who build motor homes on Ford chassis, and we are proud to be one of the first motor home manufacturers to qualify. Meeting QVM standards is a part of our policy of continuous quality improvement.



www.winnebagoind.com

CONSIDER IT AN ADVANCED EDUCATION IN MOTOR HOMES.

There's much more to buying a motor home than simply finding one with comfortable furniture and inviting interior fabrics (although those things are important). In fact, we recommend people spend as much time examining the motor home's "unseen" features as they do looking over the interior appointments. For instance, there's a great deal you can learn about how well a motor home is constructed by simply looking inside the storage compartments.



To help make your buying decision easier, we've put together a user-friendly guide which lists the most important things you should be looking for in a motor home, no matter what make or model it is. "The Guide" also highlights the importance of meeting (and exceeding) industry standards, explains Winnebago Industries' one-of-a-kind construction process and details our industry-leading warranty and care programs. So ask for "The Guide" the next time you visit your Winnebago Industries dealer. This "advanced education" will definitely pay off down the road.

For Sales and Service Information Contact:



©1998 Winnebago Industries, Inc.

Printed in USA

Seat belts are your most important hookup. Always buckle up.