



**CARGO  
TRAILERS**



***Above The Rest***

## Options Checklist

- ☐ Stoneguard, 16" or 24"
- ☐ Extension Flaps
- ☐ Concession Door
- ☐ Camping & Concession Options
- ☐ Side Doors, 32", 36", or 48"
  - ☐ With Built-In Step
  - ☐ RV Style Step
  - ☐ With RV-Type Door Locks
  - ☐ RV-Type Door w/ Window
- ☐ Generator Door, 24" X 36" or 30" x40"
- ☐ Ramp Doors with Spring Assist
- ☐ Vinyl Flooring
- ☐ Steel or Aluminum Tread Plate Floor
- ☐ Electric or Hydraulic Brakes
- ☐ Wireless Electric Brakes
- ☐ Extra Height
- ☐ Aluminum Wheels
- ☐ Stabilizer Jacks
- ☐ Back-Up Lights
- ☐ Sliding Windows
- ☐ E-Track, Sidewall and/or Floor, with Clips
- ☐ Flush Mount D-Ring Tie Downs (Wall or Floor)
- ☐ White Ceiling and/or Wall Liner
- ☐ Insulation, Ceiling and/or Wall
- ☐ Fold-Up Front Jack
- ☐ Spare Tire Carrier (Three types)
- ☐ Roof Vents
- ☐ Aluminium Side Wall Vents
- ☐ Plastic Side Wall Vents
- ☐ Interior Lighting with or w/o Wall Switch
- ☐ Break-Away Switch (On Single Axle)
- ☐ Metal Cabinets
- ☐ Generators
- ☐ Air Conditioning
- ☐ Wall Switches
- ☐ Dome light
- ☐ Ladder Racks (per each)
- ☐ Ladders
- ☐ Anodized Corners/Sides
- ☐ Deluxe aluminum tread plate

**Ask about additional options.**

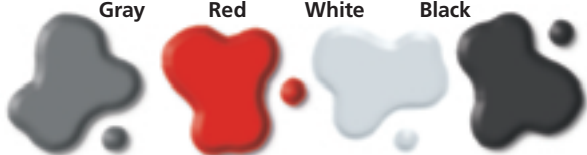
**Standard Color Choices:**  
Special Colors Available

Charcoal  
Gray

Coke  
Red

Polar  
White

Raven  
Black



MAXX AIR Vent Cover



Sliding Window



Generator



110 Wiring  
Packages



12 Volt Roof Vent



Popout  
Aluminum  
Vent

## Options CARGO TRAILER



RV Door with  
Screens/Window  
Option



ETRAC with adjustable clips (wall or floor)



Ladder Rack



Concession Door



Fully undercoated, recessed 3/4" Sturdi-Floor provides one-level rear access for ease in loading

### Doolittle Options

- White Walls & Ceilings
- D-Ring tie-down
- Aluminum Tread Plate
- Vinyl Flooring
- ATP Runner
- Extension Flap



Ladders



500 Watt Quartz Light



Rear Loading Light



Anodized Corners

# Above The Rest

# 5-wides

## Five-Wide Transport

Affordable, convenient hauling at its best. Popular among weekend warriors, sports teams and small businesses to name a few. Customizable and available with many popular add on Doolittle features.

- Smooth aluminum "Jeep" fenders
- 16" o.c. Walls
- 24" o.c. Floors
- 3/8" Plywood Walls
- 2990 lb GVW
- 15" Tires



5'x8' S/A shown with stoneguard

## Standard Key Points

- 16" O.C. 1 1/4" square tube wall construction
- Recessed 3/4" Sturdi-floor, fully undercoated
- 3/8" plywood wall liner
- Deluxe aluminum trim package
- Heavy duty steel rear frame w/ .030" aluminum wrap
- Heavy gauge (.080") aluminum roof cove
- Long wearing aluminum exterior sheathing (.030")
- Drip rails over all doors
- Aerodynamic front end construction
- Rounded nose provides extra cargo space



5'x10' S/A shown with stoneguard

All the Key Points above are included on all Doolittle Single Axle Cargo Trailers as standard equipment, at no extra cost.

BOX SIZE	OVERALL LENGTH	OVERALL WIDTH	OVERALL HEIGHT	INTERIOR LENGTH	INTERIOR WIDTH	INTERIOR HEIGHT	PLATFORM HEIGHT	HITCH BALL HEIGHT	REAR DOOR HEIGHT	REAR DOOR WIDTH	APPROX. HITCH WT.	APPROX. EMPTY WT.	GROSS VEHICLE WEIGHT RATING
5' x 8'	11' 6"	6' 8"	74 1/2"	8' 5"	56 3/4"	55 1/2"	17"	16"	48 1/2"	49 1/2"	55 Lbs.	880 Lbs.	2,990 Lbs.
5' x 10'	13' 6"	"	79 1/2"	10' 5"	"	60 1/2"	"	"	54 1/2"	"	70 Lbs.	1,040 Lbs.	2,990 Lbs.

Specifications and design subject to change without notification or obligation. Options may result in slight changes in specifications.

Doolittle Trailers are manufactured to Missouri's legal specifications. Check with your dealer about trailer laws in your state.



*6'x12' T/A shown with AC, RV door, window, ramp door and stoneguard*



*6'x12' S/A shown with stoneguard.*

## 6-wides

### Six-Wide Transports

#### Single and Tandem Axle

Many other options available including GVW's up to 12,000 lbs.

*Available in multiple lb. GVW in lengths ranging from 8' to 20'.*

BOX SIZE	OVERALL LENGTH	OVERALL WIDTH	OVERALL HEIGHT	INTERIOR LENGTH	INTERIOR WIDTH	INTERIOR HEIGHT	PLATFORM HEIGHT	HITCH BALL HEIGHT	REAR DOOR HEIGHT	REAR DOOR WIDTH	APPROX. HITCH WT.	APPROX. EMPTY WT. SINGLE AXLE*	GROSS VEHICLE WEIGHT T/A	GROSS VEHICLE WEIGHT S/A	TIRE SIZE	WHEEL BOLT PATTERN
6' x 10'	13' 6"	93"	86 1/2"	10' 6"	68 3/4"	67 1/2"	17"	16"	60 1/2"	61 1/2"	95 Lbs.	1,230 Lbs.	7,000 Lbs.	2,990 Lbs.	6-Ply ST205/75R15	5 on 4.5"
6' x 12'	15' 6"	"	"	12' 6"	"	"	"	"	"	"	120 Lbs.	1,350 Lbs.	"	"	"	"
6' x 14'	17' 6"	"	"	14' 6"	"	"	"	"	"	"	160 Lbs.	1,450 Lbs.	"	"	"	"
6' x 16'	19' 6"	"	"	16' 6"	"	"	"	"	"	"	195 Lbs.	1,650 Lbs.	"	"	"	"
6' x 18'	21' 6"	"	"	18' 6"	"	"	"	"	"	"	235 Lbs.	2,320 Lbs.	"	"	"	"
6' x 20'	23' 6"	"	"	20' 6"	"	"	"	"	"	"	265 Lbs.	2,470 Lbs.	"	"	"	"

Specifications and design subject to change without notification or obligation. Options may result in slight changes in specifications.

Doolittle Trailers are manufactured to Missouri's legal specifications. Check with your dealer about trailer laws in your state.

\*T/A trailers add approx 230 lbs to empty weight for axle.

7'x12' S/A shown with side door and stoneguard



7'X12' S/A shown with side door and stoneguard.

**Seven-Wide Transports**  
**Single and Tandem Axle**  
 Many other options available  
 including GVW's up to 14,000 lbs.

**Also available without interior fender wells!**

**7-wides**

7'X12' T/A shown with side door, ladder racks and stoneguard.



BOX SIZE	OVERALL LENGTH	OVERALL WIDTH	OVERALL HEIGHT	INTERIOR LENGTH	INTERIOR WIDTH	INTERIOR HEIGHT	PLATFORM HEIGHT	HITCH BALL HEIGHT	REAR DOOR HEIGHT	REAR DOOR WIDTH	APPROX. HITCH WT.	APPROX. EMPTY WT.	GROSS VEHICLE WEIGHT RATING T/A	WIDTH BETWEEN WHEEL WELLS	TIRE SIZE	WHEEL BOLT PATTERN
7' x 12'	15' 11"	7'9"	98 1/2"	12' 6"	80 3/4"	78 1/2"	18"	17"	72 1/2"	73 1/2"	135 Lbs.	2,040 Lbs.	7,000	72"	205-75-15	5 on 4.5"
7' x 14'	17' 11"	"	"	14' 6"	"	"	"	"	"	"	180 Lbs.	2,215 Lbs.	7,000	"	"	"
7' x 16'	19' 11"	"	"	16' 6"	"	"	"	"	"	"	225 Lbs.	2,390 Lbs.	"	"	"	"
7' x 18'	21' 11"	"	"	18' 6"	"	"	"	"	"	"	260 Lbs.	2,565 Lbs.	"	"	"	"
7' x 20'	23' 11"	"	"	20' 6"	"	"	"	"	"	"	300 Lbs.	2,470 Lbs.	"	"	"	"

Specifications and design subject to change without notification or obligation. Options may result in slight changes in specifications.

Doolittle Trailers are manufactured to Missouri's legal specifications. Check with your dealer about trailer laws in your state. \* T/A trailers add approximately 230 lbs to empty weight for axle.



8'X16' T/A  
Shown with  
(options)



8'X36' Tri-Axle shown with  
Vee Nose and RV side door

## 8-wides

### Eight-Wide Transport

Whether you're hauling 4-wheelers or race cars, these rugged trailers are fully customizable and available with any of the popular add on Doolittle features and packages.

BOX SIZE	OVERALL LENGTH	OVERALL WIDTH	OVERALL HEIGHT	INTERIOR LENGTH	INTERIOR WIDTH	INTERIOR HEIGHT	PLATFORM HEIGHT	HITCH BALL HEIGHT	REAR DOOR HEIGHT	REAR DOOR WIDTH	APPROX. HITCH WT.	APPROX. EMPTY WT.	GROSS VEHICLE WEIGHT RATING	WIDTH BETWEEN WHEEL WELLS	TIRE SIZE	WHEEL BOLT PATTERN
8' x 12'	15' 11"	98"	101"	12' 7"	89 3/4"	78 1/2"	20"	19"	72 1/2"	82 1/2"	145 Lbs.	2,120 Lbs.	7,000 Lbs.	76"	205-75-15	5 on 4.5"
8' x 14'	17' 11"	"	"	14' 7"	"	"	"	"	"	"	190 Lbs.	2,320 Lbs.	"	"	"	"
8' x 16'	19' 11"	"	"	16' 7"	"	"	"	"	"	"	235 Lbs.	2,520 Lbs.	"	"	"	"
8' x 18'	21' 11"	"	"	18' 7"	"	"	"	"	"	"	270 Lbs.	2,720 Lbs.	"	"	"	"
8' x 20'	23' 11"	"	"	20' 7"	"	"	"	"	"	"	310 Lbs.	2,920 Lbs.	"	"	"	"
8' x 22'	25' 11"	"	"	22' 7"	"	"	"	"	"	"	350 Lbs.	3,120 Lbs.	"	"	"	"
8' x 24'	27' 11"	"	"	24' 7"	"	"	"	"	"	"	390 Lbs.	3,320 Lbs.	"^	"	"	"
8' x 26'	29' 11"	"	103"	26' 7"	"	"	22"	21"	"	"	440 Lbs.	3,520 Lbs.	"^	"	"	"
8' x 28'	31' 11"	"	"	28' 7"	"	"	"	"	"	"	485 Lbs.	3,720 Lbs.	"^	"	"	"
8' x 30'	33' 11"	"	"	30' 7"	"	"	"	"	"	"	540 Lbs.	3,970 Lbs.	10,000 Lbs.	"	ST225/75R15	6-hole
8' x 32'	35' 11"	"	"	32' 7"	"	"	"	"	"	"	595 Lbs.	4,220 Lbs.	"	"	"	"
8' x 34'	37' 11"	"	"	34' 7"	"	"	"	"	"	"	650 Lbs.	4,470 Lbs.	"	"	"	"
8' x 36'	44' 11"	"	"	44' 7"	"	"	"	33"-44"	"	"	730 Lbs.	5,620 Lbs.	12,000 Lbs.	"	ST235/85R16	8-hole
8' x 38'	46' 11"	"	"	46' 7"	"	"	"	"	"	"	805 Lbs.	5,920 Lbs.	"	"	"	"
8' x 40'	48' 11"	"	"	48' 7"	"	"	"	"	"	"	880 Lbs.	6,220 Lbs.	"	"	"	"
* 8' 4" x 40'		102"	"		96 3/4"	"	"	"	"					82 1/2"		

Specifications and design subject to change without notification or obligation. Options may result in slight changes in specifications.

Doolittle Trailers are manufactured to Missouri's legal specifications. Check with your dealer about trailer laws in your state.

\* Wide Body Option is available on any 8' wide trailer equipped with wide track axles.

^While not required, Doolittle recommends 24', 26', and 28' trailers be upgraded to 10,000 lb. GVWR. A lower GVWR voids the factory warranty.



### Popular Features

- Stoneguard—standard
- Enclosed gooseneck provides extra storage space
- Electric or hydraulic brakes
- Vee nose available on enclosed or open gooseneck area

## Goosenecks

In addition to all the other fine features found on every Doolittle trailer, Gooseneck Trailers are easier to maneuver, offer better weight distribution, are gusseted for maximum strength, provide extra cargo space, and can be combined with many other options.



**Concession Trailers** Customized with rear mounted BBQ.

## Square Bodys



***We'll customize your transport to fit your unique needs.***



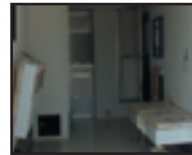
Full line of replacement parts and options are available through our Doolittle Trailer parts Catalog. Contact your local dealer for more information.

## Standard Features:

- White spoke wheels
- Long-life coating on fasteners
- Rubber torsion suspension
- Radial tires
- Formed steel rear door header
- E-Z lube hubs
- Primed and painted throughout
- Camlock rear doors
- Flush mount door fasteners
- 1 1/4" square steel wall uprights
- Galvanized roof
- Safety chains
- Aerodynamic fiberglass front cap
- DOT-approved LED lighting
- Doubled-dipped zinc coated hinges w/ nylon bushings
- .080 Aluminum roof cove
- Roof seams caulked with Polyurethane 6000
- 4" Aluminum trim package
- Thermo-plastic door hold backs



Ask about our "Racing Series"



Summit Auto Package

*"Living Quarters" packages*  
Available with Beds, Kitchen,  
Lavatory and other comforts

## E-SPORT

Looking for an affordable  
and economical trailer?

Ask about our E-Sport  
Cargo Trailer.



# Above The Rest



## CARGO TRAILERS

### DEALER QUOTE

ITEM	QTY	PRICE

Call 1-800-654-4948 for the authorized  
Doolittle dealer nearest you.

DEALER CONTACT INFORMATION



CALL 1-800-654-4948 FOR THE AUTHORIZED DOOLITTLE DEALER NEAREST YOU