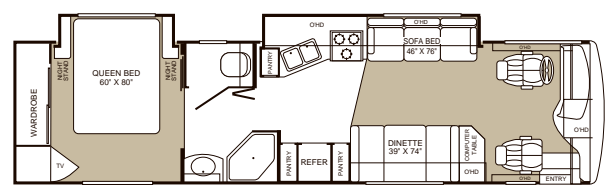
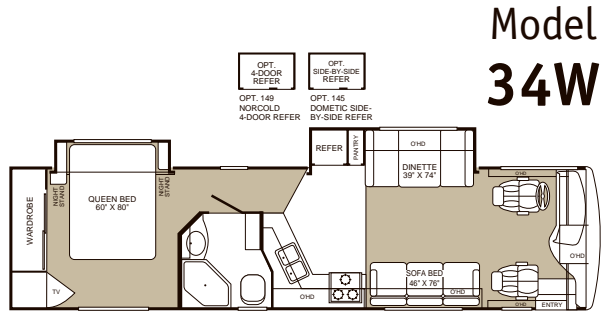
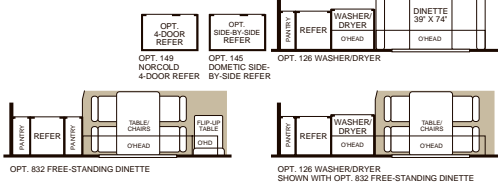


# Bounder<sup>®</sup>

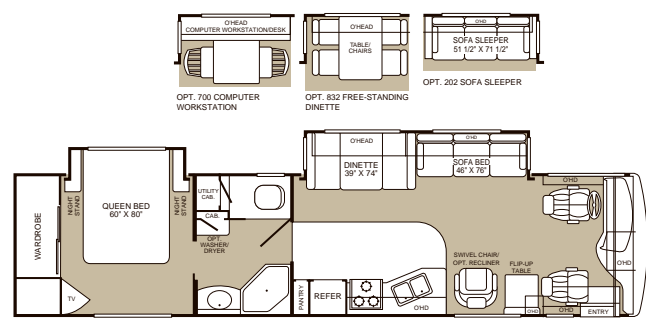
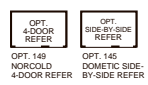
TURBO DIESEL  
FLEETWOOD RV<sup>®</sup>



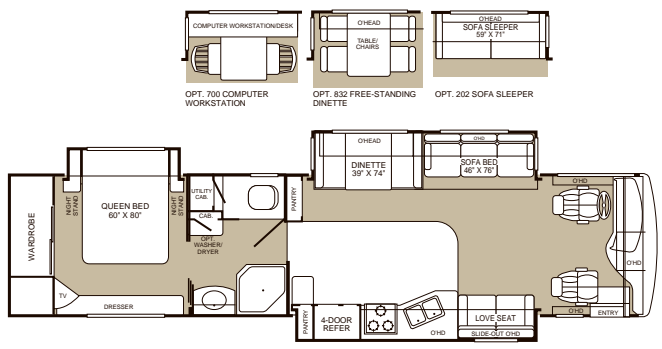
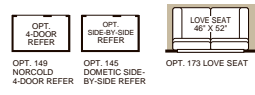
Model  
**34M**



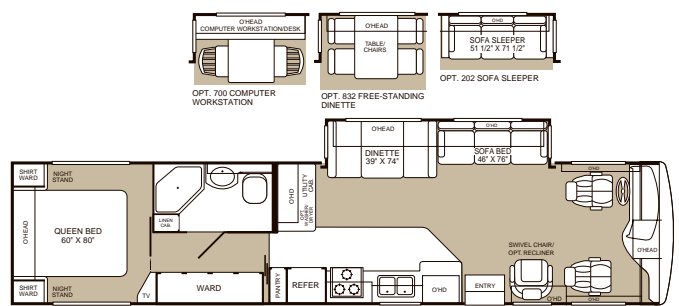
Model  
**34W**



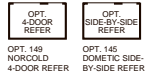
Model  
**37U**



Model  
**38N**



Model  
**39Z**



# Standard and Optional Features



## APPLIANCES

- Front 27" Panasonic® TV in Overhead
- Rear 20" Panasonic® TV
- Panasonic® VCR
- Video Switch Box TV/VCR
- Smoke Detector/Alarm
- LPG Detector/Alarm
- CO Detector/Alarm
- Furnace 20M/25M BTU Dual
- 10-Gallon Quick-Recovery Water Gas/Electric Heater with D.S.I.
- 22" 3-Burner, High-Output Cooktop
- RV System Monitor Panel
- Dual High Efficiency A/C with Solar Panel on Front A/C
- Water Heater Bypass
- Inverter/Converter (2000 Watt)
- Porcelain Toilet with Water Saver
- Toilet Tank San-T-Flush™ System
- GE® Convection Microwave
- 8 cu. ft. Dometic® Refrigerator
- Single Lever Galley Faucet
- Water Filter with Faucet
- Demand Water Pump with Filter
- Power Bath Vent
- TV Antenna
- Fan-Tastic® Power Roof Vent in Galley
- Fire Extinguisher
- Telephone Jack in Living Area and Bedroom
- Rear Speakers in Bedroom

## BODY STRUCTURE

- Vacu-Bond® Lower and Upper Floors
- Vacu-Bond® Walls with Smooth High Gloss Exterior Fiberglass
- Radius Roof with Ducted Air Conditioning
- Royal Tuff-Ply™ —TPO Exterior Roof
- Aluminum Floor/Wall/Ceiling Framing

## ELECTRICAL

- 7.5 KW Diesel Generator
- Patio Receptacle
- 120V/12V AC/DC Converter Central Electric
- 120V/12V Wire Raceways
- Water Pump Switching-3 Way
- 50 amp Service
- Wall Switches
- 4 6V/Deep Cycle 218 amp House Batteries
- Satellite Dish - STD

## EXTERIOR

- Full Fiberglass Front Cap
- Slide-Out Room Living Area
- Side Opening, Engine-Access Door
- Fiberglass Front and Rear Bumpers
- Fiberglass Wheel Wells
- Aerodynamic Bus Styling
- Radius Entry Door with Deadbolt Latch

## EXTERIOR (CONT.)

- Dual-Pane Slider Windows
- Utility Compartment with Exterior Washdown
- 4-point Manual Hydraulic Levelers
- Roof Ladder
- Exterior Assist Handle
- Remote/Heated Exterior Rear View Mirrors
- 20' Sewer Hose
- Park Cable Receptacle
- Awning Rail/Drip Molding (Both Sides)
- Power Entry Step
- Dual Battery Charge Control
- Porch Light (Doorside)
- 3 Colorway Graphics to Match Decor
- Patio and Entry Door Awning

## EXTERIOR AUTOMOTIVE

- Large, Curved Aerodynamic Windshield
- Undercoating
- Stainless Steel Wheel Simulators
- Valve Extenders
- Mud Flaps
- Underhood Utility Light
- Steel Surface on Bulkhead
- Trailer Hitch with 7-Pin Electrical Hookup\*
- Halogen Headlights
- Fog Lamps
- Rear Vision Camera
- Windshield Wipers with Wet Arm
- Freightliner® Chassis 300HP
- Air Suspension

## EXTERIOR STORAGE

- Insulated Luggage Doors
- Single Paddle/Metal Latches
- One-Piece Bulb Seal
- Central Utility Compartment
- Hidden Stainless Steel Latch Rods
- Gas-Lift Strut Supports
- Lights in Compartments
- Steel Seal Frames

## INTERIOR

- 3 Interior Decors
- Woven Jacquard Feature Fabrics
- Skylight in Tub/Shower
- Glass Shower Door with Bright Brass Frame
- Flexsteel® Furniture
- Cherry Wood Grain, Birch Wood Grain or Maple Wood Grain
- Wall-to-Wall Nylon Carpet-Trackless Plush
- Carpet Pad
- Vinyl Floor Covering in Galley & Bath
- Wood Drawers
- Roller Guide Drawer Slides with Transit-Ship Locks
- Radius Corner Cabinetry

## INTERIOR (CONT.)

- Large Overhead Cabinets
- Brass Cabinet Hardware
- Reclining Bucket Seats (Driver/Passenger)
- 3-Point Front Seat Belts
- Pleated Shades
- Bedspread with Decor Pillows
- Innerspring Mattress
- Solid Surface Galley Countertops
- Crown Molding
- Headboard (39Z)
- Beveled Bronze Tint Decor Mirrors
- Window Coverings (Color Coordinated to Decor)
- Solid Surface Galley Sink Cover/Cutting Board
- Solid Surface Lavy Top
- Bright Brass Bath Accessories
- Residential Seat Styling
- Raised-Panel Overhead Cabinet Doors
- Adjustable Cabinet Shelves (Selected Cabinets)
- Large, Porcelain, Double Sink in Galley

## INTERIOR AUTOMOTIVE

- Intermittent Wiper Control
- Multi-Function Sun Visor
- DSS Manual Lift/Winegard® Satellite Dish
- Cruise Control
- AM/FM/CD Radio
- Auxiliary Start Circuit
- Battery Disconnect System
- Auto A/C Heater Combo
- Radio Switch—Main/Auxiliary Power
- Soft Surface Automotive Dash
- Tilt/Telescoping Steering Wheel
- Driver/Passenger Captain's Chairs with Reclining Back/Slide Controls
- Solar Battery Charger
- Ceiling Ducted Roof Air Conditioning

## INTERIOR LIGHTING

- Fluorescent Ceiling Lights with Dual Bulbs
- Decor Lighting
- Incandescent Lighting
- Make-up Lights in Bath

## PLATFORM CONSTRUCTION

- Power Platform Floor Configuration
- Heated Water & Holding Tank Compartments
- Polyethylene Luggage Compartment Boxes
- Paco® Beam System

## SLIDE-OUT

- Living Room (Dinette/Sofa)(37U, 38N, 39Z)
- Galley (34M, 38N)
- Bed (34M, 34W, 37U, 38N)
- Dinette/Refrigerator (34W)

\* The chassis manufacturer recommends the installation of a supplemental brake control system to activate the brakes on the vehicle or trailer you are towing.

# Specifications



	34M	34W	37U	38N	39Z
<b>FREIGHTLINER® CHASSIS</b>					
Engine Liters	5.9L	5.9L	5.9L	5.9L	5.9L
Wheelbase	208"	208"	242"	252"	252"
GVWR (lbs) (1)	27,910	27,910	27,910	27,910	27,910
Front GAWR (lbs) (2)	10,410	10,410	10,410	10,410	10,410
Rear GAWR (lbs) (2)	17,500	17,500	17,500	17,500	17,500
Base Weight (lbs) (3)	20,050	20,050	21,555	21,724	20,775
GCWR (lbs) (4)	32,910	32,910	32,910	32,910	32,910
Hitch Rating (lbs)*	5,000	5,000	5,000	5,000	5,000
Tongue Weight (lbs)*	500	500	500	500	500
Fuel Capacity (gal)	90	90	90	90	90

## DIMENSIONS AND CAPACITIES

Overall Length (5)	34' 8"	34' 8"	37' 6"	38' 4"	39' 0"
Overall Height (with A/C)	12' 1"	12' 1"	12' 1"	12' 1"	12' 1"
Overall Width (maximum) (6)	102"	102"	102"	102"	102"
Interior Height (maximum)	79"	79"	79"	79"	79"
Interior Width (maximum)	96"	96"	96"	96"	96"
Fresh Water Holding Tank (gal)	86	86	86	86	86
Grey Water Holding Tank (gal)	50	50	50	50	50
Black Water Holding Tank (gal)	50	50	50	50	50
Appliance LPG Tank (gal) (WC) (7)	25	25	25	25	25
Water Heater Tank (gal)	10	10	10	10	10

<b>LIQUID WEIGHT REFERENCE</b>	<b>Water (gal) = (8.3 lbs/3.8 kgs)</b>	<b>Fuel (gal) = (7.1 lbs/3.2 kgs)</b>	<b>LPG (gal) = (4.2 lbs/1.9 kgs)</b>		
<b>METRIC CONVERSION</b>	<b>Multiply pounds x 0.4535 to obtain kilograms</b>		<b>Multiply gallons x 3.785 to obtain liters</b>		

- GVWR (Gross Vehicle Weight Rating): Means the maximum permissible loaded weight of the motor home. The GVWR is equal to or greater than the sum of the unloaded vehicle weight plus the net carrying capacity.
  - GAWR (Gross Axle Weight Rating): Means the maximum permissible loaded weight a specific axle is designed to carry.
  - Base Weight: Means the estimated weight of the motor home without fuel, options, water, cargo or passengers.
  - GCWR (Gross Combined Weight Rating): Means the value specified by the motor home manufacturer as the maximum allowable loaded weight of this motor home with its towed vehicle. Towing and braking capacities may differ. Refer to Fleetwood and chassis manufacturer manuals for complete information.
  - Length taken from front bumper to rear bumper (excludes accessories).
  - Excludes safety equipment and awnings.
  - Tank Manufacturer's listed water capacity (WC). Actual LPG capacity is 80% of water listing as required by the safety code.
- \* The chassis manufacturer recommends the installation of a supplemental brake control system to activate the brakes on the vehicle or trailer you are towing.

OPTIONS	34M	34W	37U	38N	39Z
---------	-----	-----	-----	-----	-----

## APPLIANCES

Washer/Dryer	OPT	N/A	OPT	OPT	OPT
22" 3-Burner, High-Output, Cooktop Range w/Oven	OPT	OPT	OPT	OPT	OPT
Norcold® 12 cu. ft. Refrigerator	OPT	OPT	OPT	STD	OPT
Dometic® 12 cu. ft. Refrigerator	OPT	OPT	OPT	OPT	OPT

## EXTERIOR AUTOMOTIVE

CSA Package-Freightliner®	OPT	OPT	OPT	OPT	OPT
Electric Awning	OPT	OPT	OPT	OPT	OPT

## INTERIOR

Ultraleather™ Sofa	OPT	OPT	OPT	OPT	OPT
Love Seat	N/A	N/A	OPT	STD	N/A
Ultraleather™ Love Seat	N/A	N/A	OPT	OPT	N/A
Ultraleather™ Swivel Recliner	N/A	N/A	OPT	N/A	OPT
Swivel Recliner	N/A	N/A	OPT	N/A	OPT
Sofa Sleeper	N/A	N/A	OPT	OPT	OPT
Free-Standing Dinette and Chairs	OPT	N/A	OPT	OPT	OPT
Ultraleather™ Driver and Passenger Seats, Power Driver, Power Passenger with Power Foot Rest	OPT	OPT	OPT	OPT	OPT
Ultraleather™ Driver and Passenger Seats, Power Driver Seat	OPT	OPT	OPT	OPT	OPT
Panasonic® Home Theater Sound System	OPT	OPT	OPT	OPT	OPT

## INTERIOR AUTOMOTIVE

Dash Fans	OPT	OPT	OPT	OPT	OPT
Stereo AM/FM with CD-Cassette	OPT	OPT	OPT	OPT	OPT
Stereo AM/FM with 6 Disc CD	OPT	OPT	OPT	OPT	OPT

**IMPORTANT—PLEASE READ:** Product information, photography and illustrations included in this publication were as accurate as possible at the time of printing. For further product information and changes, please visit our website at [www.fleetwoodrv.com](http://www.fleetwoodrv.com) or contact your local Fleetwood dealer. Prices, materials, design and specifications are subject to change without notice. All weights, fuel, liquid capacities and dimensions are approximate. Fleetwood has designed its recreational vehicles to provide a variety of uses for its customers. Each vehicle features optimal seating, sleeping, storage and fluid capacities. The user is responsible for selecting the proper combination of loads (i.e. occupants, equipment, fluids, cargo, etc.) to ensure that the vehicle's capacities are not exceeded.

## Why would you buy anything else?

For every road you travel, Fleetwood has the RV to fit your high standards and lifestyle. We build the recreational vehicles America wants, accounting for nearly one out of every three RVs on the road today. How do we do it? We call it the **Fleetwood Equation**.

# Size + Service + Quality = Value!

### Size

The world's #1 RV manufacturer

**Over the past half-century Fleetwood has grown to become the largest manufacturer of recreational vehicles in the world.**

Fleetwood remains, year after year, the largest, most influential, innovative and recognized leader in the RV industry.

### Service

Listening to our customers

**With over 1,100 service dealers in the US and Canada, Fleetwood has the largest network in the RV industry.** No other RV company comes close to equaling this vital customer support system.

Fleetwood RV service dealers have instant, real-time electronic access to your service records as well as parts inventory and warranty repair authorization inquiries. We also provide a customer call center for service and product information so no matter where you travel in North America, professional support and fast answers are always nearby. Call toll free: **1-800-322-8216**.



### Quality

Using only the best materials

**At Fleetwood, quality begins at the design stage so every coach is built right, right from the start.** Subsequent to design approval, full-functioning prototypes are built, then punished on a test track and subjected to accelerated life cycle tests where a few weeks can equal years of normal use. At the same time, components and systems are test-cycled thousands of times assuring years of problem-free use. Once approved for production, each unit is built by skilled technicians using quality materials and components, many of which are sourced through, or manufactured by, our subsidiary companies such as Gold Shield Fiberglass and Continental Lumber Products.



Fleetwood engineers specify the very best products and appliances from companies such as Coleman, Dometic, Flexsteel, Ford, Freightliner, Magic Chef, Panasonic, and Workhorse. These companies are experts in their respective fields and play a significant role as partners, not just suppliers.

All this assures that every Fleetwood RV has the fit, finish and details required by our high standards—as well as yours.

### Value

Priced right with style

**At Fleetwood RV, we look at value as the sum of everything we offer.**

- **Value** is our design, engineering expertise, and innovative manufacturing methods.
- **Value** is structures and components that are the best in the industry, that meet or exceed government and industry safety standards.
- **Value** is Ownercare—a one-year/three-year warranty with coverage from a company that will be around in the future to service your needs. Ownercare is one of the RV industry's most comprehensive programs and includes systems and applications, construction, no deductible and no service charge. And it is fully transferable for the first 12 months. See your nearest Fleetwood dealer for a full explanation of benefits and restrictions.
- **Value** is customer satisfaction. When asked, more experienced RV owners would recommend Fleetwood to a friend than any other brand. Fleetwood RVs consistently hold their value better than most RVs at trade-in time.



**Value is peace of mind.**

**SSQV**—Size, Service, Quality, and Value. Together they equate to the very best RV you can buy, and the reason you should purchase a Fleetwood over any other brand.

**Require these features when you purchase your next RV... Fleetwood does!**

**See you on the road!**

**FLEETWOOD RV**  
America's Favorite RV!

Fleetwood Enterprises, Inc. • RV Marketing • P.O. Box 7638 • Riverside, CA 92513-7638

Your local Fleetwood RV dealer is:



Join Now!  
(877) 577-2560

**www.fleetwoodrv.com**

Visit our website to find a dealer near you or learn more about other Fleetwood products. Or call 1-800-444-4905.

FOR CUSTOMER ASSISTANCE, call toll free at 1-800-322-8216, visit our website, or you may write to Fleetwood Enterprises, Inc., P.O. Box 7638, Riverside, CA 92513-7638.

**IMPORTANT—PLEASE READ:** Product information, photography and illustrations included in this publication were as accurate as possible at the time of printing. For further product information and changes, please visit our website at [www.fleetwoodrv.com](http://www.fleetwoodrv.com) or contact your local Fleetwood dealer. Prices, materials, design and specifications are subject to change without notice. All weights, fuel, liquid capacities and dimensions are approximate. Fleetwood has designed its recreational vehicles to provide a variety of uses for its customers. Each vehicle features optimal seating, sleeping, storage and fluid capacities. The user is responsible for selecting the proper combination of loads (i.e. occupants, equipment, fluids, cargo, etc.) to ensure that the vehicle's capacities are not exceeded.