

Let your inquisitive side  
lead the way.

*Pursuit*<sup>®</sup> 2006



"the motorhome people"<sup>®</sup>

# Pursuit® Features

## Exterior

### Standard

Radial Spare Tire  
Big Foot Leveling Jacks  
Trunk Lights  
Patio Light by Entry Door  
Mud Flaps—Front & Rear  
Double Electric Step at Entry Door  
Dual Deep Cycle Auxiliary Battery System  
Battery System Emergency Start  
Single Water Fill w/ Change-Over Valve  
Exterior Shower w/ Hot & Cold (Sewer Comp.)  
Heated/Enclosed Holding Tank Comp.  
Battery Disconnect  
Electric Supply Cord 30 Amp.  
60 Amp. Converter  
Awning Rails w/ Gutter  
Slide Room Awning  
Side Mount Exterior Mirrors—  
Heated & Remote  
Delay Wiper Switch  
20' Sewer Hose  
Black Tank Rinse System  
Automotive Underbody Undercoating  
Pneumatic Water Line Winterizing Fitting  
Gas Struts—Exterior Compartment Doors

### Optional

Dark Silver Exterior Paint  
Driving Lights  
Stainless Steel Simulators

## Trailer Hitch

Electric Supply Cord 50 Amp.  
Rear Ladder  
Main Awning  
Thermopane Windows  
Locking Gas Fill Door  
Driver Door & Slider Window  
Transit Front Cap Cover

## Interior

### Standard

Welbeck Birch Cabinetry  
Linoleum Tile Floor—Kitchen & Bath  
Booth Dinette  
Doors in Dinette Base  
Hardwood Cabinet Doors  
Monitor System  
Skylight in Bath  
Handrail at Entry Door  
Mini Blinds—Living Room & Bedroom  
Standard Mattress  
Bedspread  
Plastic Sink Cover

### Optional

Free-Standing Dinette w/ 2 Free-Standing &  
2 Extra Folding Chairs (3480 DS & 3500 DS)  
Fantastic Fan with Rain Sensor  
Day/Night Shades—Living Room & Bedroom  
Day/Night Shades—Living Room Only  
Upgraded Mattress  
Range Cover—Bifold

## Comfort & Convenience

### Standard

Marine-Type Toilet  
Bath Light Switch  
Power Bath Vent  
Shower Door

## Driver's Accessories

### Standard

Swivel/Reclining Driver & Passenger Seats  
Windshield Privacy Drapes on Track  
Daytime Running Lights  
ABS Drink Tray  
12V Power Outlet at Dash

### Optional

Defroster Assist Fans w/ Dash Switch

## Appliances

### Standard

Pre-Wire for Roof A/C  
Generator Ready  
Ducted Roof  
31,000 BTU Furnace (2970 DS, 3190 DS)  
(2) 25,000 BTU Furnace (3500 DS)  
40,000 BTU Furnace (3480 DS)  
3-Burner Cooktop  
1.0 Cu. Ft. Microwave Built In  
Double-Door Refrigerator  
Water Heater Bypass  
Water Heater (6 Gal.) w/ Electric Ignition

## Optional

4,000 Watt Onan® Micro-Quiet & 13,500 BTU  
Roof A/C (2970 DS, 3190 DS)  
4,000 Watt Onan® Micro-Quiet & 15,000 BTU  
Roof A/C (2970 DS, 3190 DS)  
5,500 Watt Onan® Marquis Gold & 13,500 &  
11,000 BTU Roof A/C  
7,000 Watt Onan® Marquis Gold &  
(2) 13,500 BTU Roof A/Cs  
Heat Strip w/ Roof A/C  
Low-Profile Roof A/C  
3-Burner Range w/ Oven (17")  
1.0 Cu. Ft. Half Time® Microwave Built In  
Large Double-Door Refrigerator  
Water Filter System  
Gas/Electric Water Heater

## Audio/Visual

### Standard

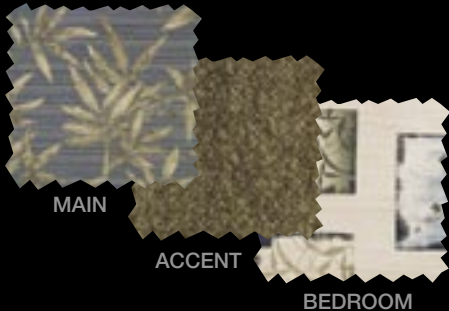
4 Radio Speakers  
AM/FM Stereo CD  
27" Flat-Screen TV—Living Room  
TV Antenna w/ Booster  
Cable TV & Phone Jacks  
Rear Camera Cable  
Pre-Wire for Satellite Dish

### Optional

CB Antenna (Only)  
20" Flat-Screen TV—Bedroom (120 V)  
VCR/DVD Combo  
TV Distribution Panel  
Remote Rear Camera w/ Monitor

# Fabrics

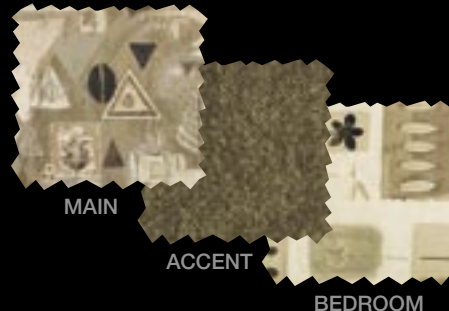
Sapphire



Saffron Willow



Sandstone



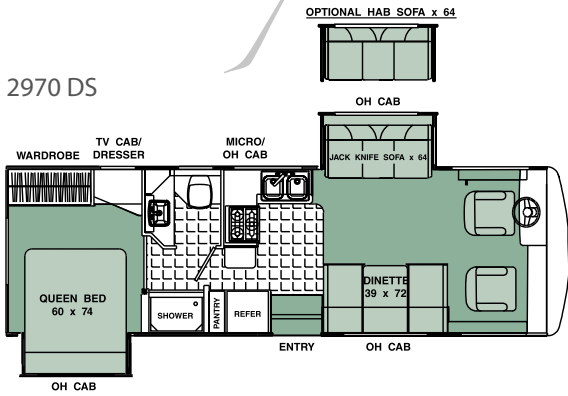
# Wood



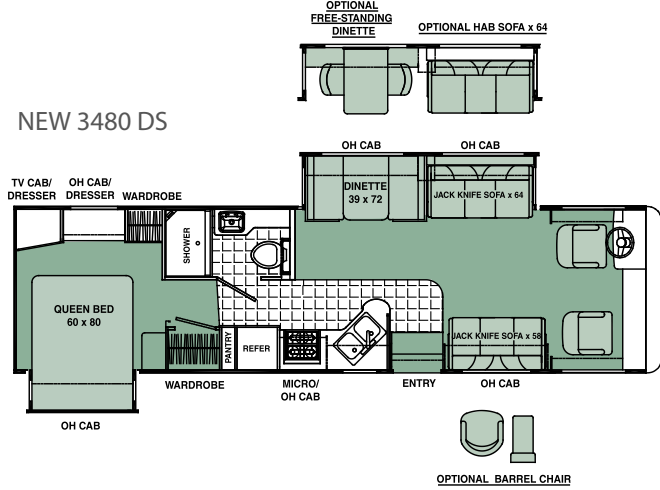
Welbeck Birch

Pursuit®  
Floor plans

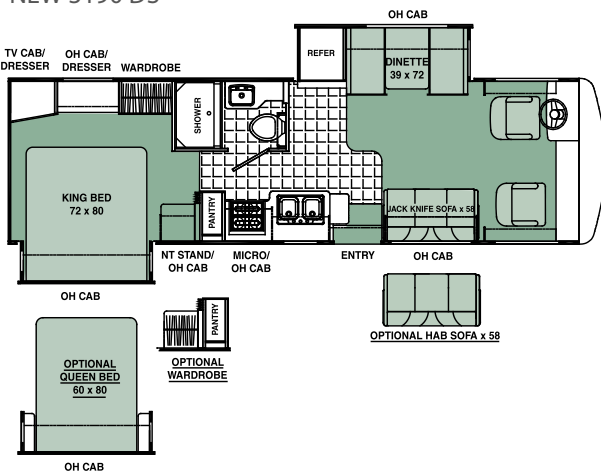
2970 DS



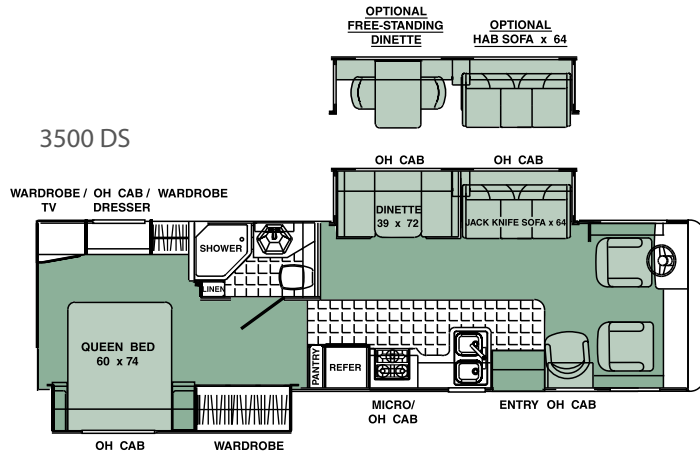
NEW 3480 DS



NEW 3190 DS



3500 DS



## Exterior Graphics



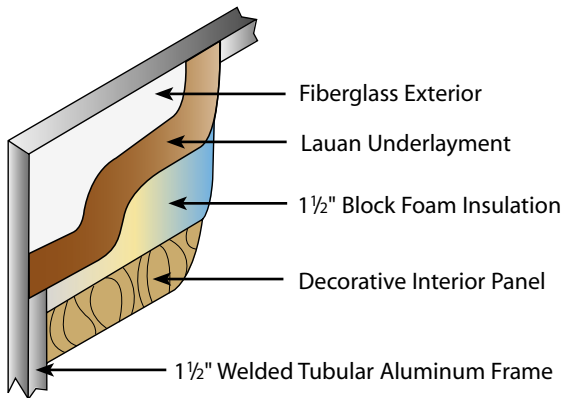
Standard

Optional Dark Silver Paint  
(featured on cover)

# Specifications

	2970 DS	3190 DS	3480 DS	3500 DS
Chassis	Ford	Ford	Ford	Ford
Chassis Model	F-53	F-53	F-53	F-53
Engine Size (liter)	6.8	6.8	6.8	6.8
Wheel Base	190"	208"	228"	228"
Tire Size	225/70R 19.5	225/70R 19.5	245/70R 19.5	245/70R 19.5
GVWR (lbs.)	18,000	18,000	20,500	20,500
UVW (lbs.)	15,000	16,000	17,100	16,950
GAWR Front (lbs.)	7,000	7,000	7,500	7,500
GAWR Rear (lbs.)	11,000	11,000	13,500	13,500
GCWR (lbs.)	26,000	26,000	26,000	26,000
Exterior Length	29' 9"	31' 10"	34' 9"	34' 9"
Exterior Clearance Height*	11' 9"	11' 9"	11' 9"	11' 9"
Exterior Width	8' 4"	8' 4"	8' 4"	8' 4"
Interior Width	7' 11 1/4"	7' 11 1/4"	7' 11 1/4"	7' 11 1/4"
Interior Height	6' 7"	6' 7"	6' 7"	6' 7"
Sleeping Capacity	5	5	6	5
Fuel Capacity (gal.)	75	75	75	75
Fresh Water Capacity (gal.)	58	70	70	75
Waste Water Capacity (gal.)	45	44	50	45
Grey Water Capacity (gal.)	45	45	51	60
Water Heater Capacity (gal.)	6	6	6	6
LP Gas Capacity (lbs.)	65	85	100	100
Furnace Rating (x 1,000) BTU	31	31	40	(2) 25
Awning Size (ft.)	13	14	16	14

## Sidewall Construction



### GVWR (Gross Vehicle Weight Rating):

The maximum permissible weight of the unit, including the UVW plus all fluids, cargo, optional equipment and accessories. For safety and product performance, do not exceed GVWR.

### UVW (Unloaded Vehicle Weight):

Means the weight of a motorhome as manufactured at the factory with fuel, engine oil and coolants. The above UVWs represent a motorhome with typical options. UVW will vary significantly based on option selection.

### GAWR (Gross Axle Weight Rating):

The total weight each front/rear axle, suspension and tire system is designed to carry. When loading the unit, care should be taken to balance cargo weight in consideration of the GAWRs.

### GCWR (Gross Combined Weight Rating):

The maximum total weight of the loaded unit plus a tow vehicle. This includes the weight of both the unit and tow vehicle, fuel for each, all other fluids, cargo, occupants, optional equipment and accessories.

\* Includes clearance for air conditioner and satellite dish.

**IMPORTANT NOTE:** All capacities are approximate and all dimensions are nominal. Georgie Boy motorhomes are designed to allow for a wide variety of uses, extended trips with two people or short trips with multiple people. Accordingly, each unit allows ample room for sleeping, seating, fluids and cargo. While the customer is the beneficiary of this design, the customer also bears the responsibility to select the proper combination of passengers, cargo, load and tow vehicle without exceeding the chassis weight capabilities. Consumers may need additional braking capacity to tow loads greater than 1,000 pounds. Seat belts should always be worn for passenger safety. Seat belts are provided at most locations to allow convenience in selecting which seat to occupy. However, it is not intended that all seating positions equipped with a seat belt may be occupied while the vehicle is in motion, without regard to other weight factors. All Georgie Boy motorhomes are designed to ensure that the number of passengers allowed while the vehicle is in motion will always at least equal the stated sleeping capacity. Though extra seat belts may be provided, for your safety and the proper operation of your vehicle, limit your passengers to the number allowed by the Net Carrying Capacity of your vehicle.

We hope that you find this comprehensive, factual catalog helpful. All information contained in this brochure is believed to be accurate at the time of publication. However, during the model year, it may be necessary to make revisions and Georgie Boy reserves the right to make all such changes without notice, including changes in prices, colors, materials, equipment and specifications, as well as the addition of new models and the discontinuance of models shown in this brochure. Also, some equipment shown or described is optional and available at extra cost. Therefore, please consult with your Georgie Boy dealer to confirm the existence of any materials, design or specifications that are material to your purchase decision.

Georgie Boy Mfg., LLC • 21888 Beck Drive • Elkhart, IN 46516 • Phone (574) 295-7344  
Fax (574) 389-0823 • Sales (877) 876-9024 • Service (800) 521-8733  
Web Site: [www.georgieboy.com](http://www.georgieboy.com) • Owners Club: [www.georgieboyrvclub.com](http://www.georgieboyrvclub.com)

Your Dealer: