



**Pursuit.**  
For weekends. For life.

**Pursuit.** 2009 CLASS A MOTORHOMES BY GEORGIE BOY



# Pursuit.

For weekends. For life.

**Pursuit.** 2009 CLASS A MOTORHOMES BY GEORGIE BOY



*Take a ride in luxury with the stylish Pursuit. Comfort and style inside and out set the tone for carefree travel. Two-tone captain's chairs recline and swivel for your comfort. The 26" LCD television has been relocated to the rear of the living area for a clear, unobstructed view through the large, one-piece windshield. (Shown in Brazilian Cherry with Oxford Onyx decor)*



*Pursuit is designed for maximum driver comfort and safety. This automotive style dash puts the controls at your fingertips. A standard 7" rear vision camera increases visibility.*

When the weekend comes, it's time to pursue the *truly* good things in life, with the confidence that comes from knowing the keys to your next adventure are in hand. Most people only dream of the perfect weekend getaway. Yours is a dream come true behind the wheel of the Pursuit by Georgie Boy.

**DECOR SELECTIONS**

**FABRIC KEY:** **A.** Main    **B.** Accent    **C.** Bedspread



**Lakeside Maple**



**Brazilian Cherry**



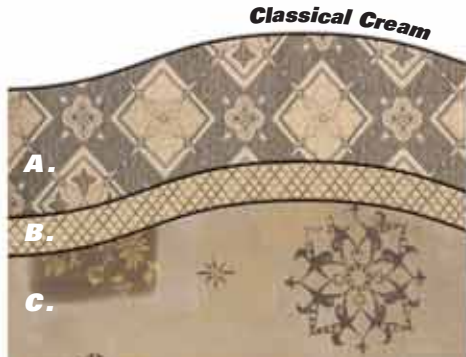
**Santiago Suede**

**A.**  
**B.**  
**C.**



**Oxford Onyx**

**A.**  
**B.**  
**C.**



**Classical Cream**

**A.**  
**B.**  
**C.**



*Prepare delicious meals or whip up a quick snack. Pursuit's kitchen includes satin nickel hardware, a high spout faucet, warm wood cabinetry with a large double bowl sink and generous pull-out pantry storage.*



*The coach command center provides central access to commonly used gauges and switches.*



# Pursuit.

For weekends. For life.

See the world more clearly with the one-piece windshield. Curb appeal continues with sleek eye-catching exterior graphics and custom front and rear caps.



Pursuit's large bedroom windows with pleated shades allow natural light during the day and plenty of privacy after dark.



The 3540 DS floorplan features a standard bunk bed/entertainment zone that creates the ultimate getaway for younger travelers or adults. A standard 15" LCD television with auxiliary hook ups makes for carefree rest and recreation. (3540 DS only)



The well equipped bath area features a glass shower door, porcelain foot-flush toilet and designer faucet.

## EXTERIOR FEATURES

This convenient utility bay gives easy access to outlets for coaxial jacks, the water pump switch, water utility panel, and a whole house water filter.



Fill up at either side of the gas pump with the handy rear fuel fill.

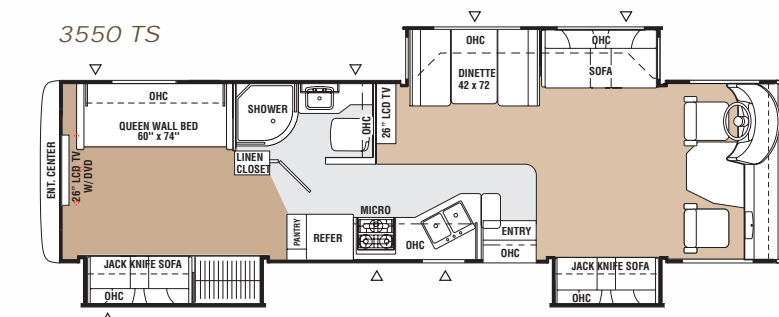
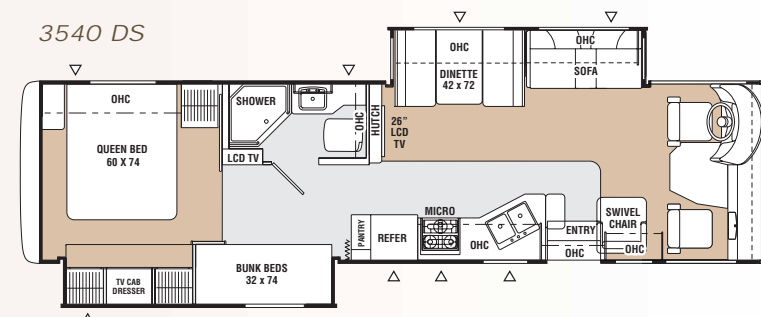
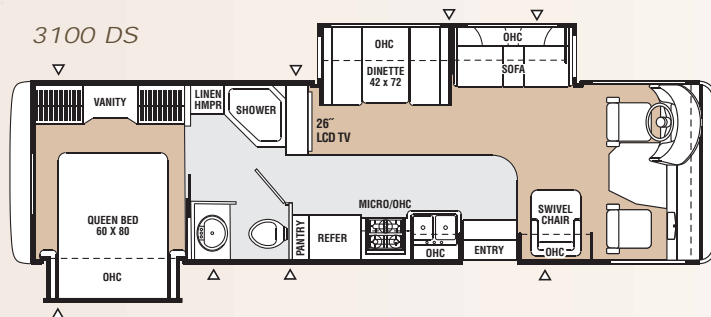


Pursuit's ample, lighted storage compartments secure your gear with paddle latch, bus-style baggage doors.

When the weekend comes it's time to pursue the good things in life. Large windows fill the space expanding slide rooms and well equipped kitchen with natural light. Plush furnishings and designer appointments create a luxurious atmosphere. A conveniently located LCD television makes this a perfect room for everyone. (Brazilian Cherry with Oxford Onyx decor shown)

## PURSUIT FLOORPLANS

Key: Carpet  Tile  Storage



## PURSUIT FEATURES S = Standard O = Optional

### LIVING APPOINTMENTS

Lakeside Maple cabinetry	S
Brazilian Cherry cabinetry	O
Hardwood raised panel cabinet doors	S
Designer cabinet hardware	S
Full extension ball bearing drawer guides	S
Techwood drawer sides	S
Silverware drawer	S
Wire pantry baskets	S
Ceramic tile flooring - kitchen and bath	S
Carpet - living and bedroom	S
Vinyl soft touch ceiling	S
Pleated window shades	S
Jackknife sofa	S
Swivel lounge chair (3100 DS, 3540 DS)	S
Booth dinette	S
Polished countertops	S
Queen bed	S
Bunk beds in hall (3540 DS)	S
Bedsprad	S
Front privacy drape	S
Cruise control	S
Tilt steering wheel	S
Dash air conditioning	S
Intermittent wipers	S
Reclining 2-tone captains chairs (Power driver's side)	S
Defrost assist fans with dash switch	S

### APPLIANCES & ACCESSORIES

Driver/passenger wall mounted cup holders	S
Back-up camera	S
Sideview camera	S
Heated exterior mirrors with remote	S
2 - 12V power outlets in dash	S
110V outlet in dash	S
20" flatscreen TV - bedroom (3100 DS, 3540 DS)	S
26" LCD TV - coach	S
15" LCD TV with DVD player - bunk area (3540 DS)	S
26" LCD TV - bedroom (3550 TS)	S
Surround sound system	S
Phone jack	S
Pre-wired for satellite dish	S
TV antenna	S
Convection microwave	S
Sealed 3-burner range	S
Lighted power range hood	S
Double bowl kitchen sink	S
High spout kitchen faucet	S
Double door refrigerator	S
30,000 BTU furnace	S
13,500 BTU ducted roof air conditioner	S
Second 13,500 BTU ducted roof air conditioner	S

### ELECTRICAL & LIGHTING

Power bath vent	S
50 amp power cord	S
55 amp electronic converter	S
Auxiliary coach battery	S
Second coach battery	S
GFI circuit	S
Coach battery disconnect	S
Outside 120-volt receptacle	S
Cable TV jacks	S
Patio light	S
6.5 KW gasoline generator	S
Coach command center	S
Lighted storage boxes with switch at entry door	S
Porcelain toilet with foot flush	S
6-gallon gas/electric E.I. water heater	S
No-Mess™ Termination System	S
Demand water pump	S
Skylight over shower	S
Glass shower enclosure	S
One-piece ABS tub surround	S
Heated holding tanks	S
Whole house water filter	S
Black tank flusher system	S
5,000 lb. towing hitch	S
One-piece windshield	S
Vinyl graphics	S

### PLUMBING & LP SYSTEM

Stainless steel wheel inserts	S
Radial tires	S
Spare tire (3540 DS, 3550 TS)	S
Fiberglass front cap	S
Fiberglass rear cap	S
Crowned and laminated roof	S
Seamless TPO roof covering	S
Roof ladder	S
Power entrance step	S
80" tall radius entrance door	S
Metal trunk boxes with felt lining	S
Entertainment plug-ins in exterior trunk box	S
Patio awning	S
Slideroom awnings	S
Automatic leveling jacks	S
CSA Upfit (mandatory for all Canadian provinces)	O
LP leak alarm	S
Fire extinguisher	S
Smoke detector	S
Carbon monoxide detector	S
Emergency start switch	S
Entrance door dead bolt lock	S
Tinted safety glass windows	S
Owner's information package	S

### SAFETY & SECURITY

Full paint exterior	O
Stainless steel wheel inserts	S
Radial tires	S
Spare tire (3540 DS, 3550 TS)	S
Fiberglass front cap	S
Fiberglass rear cap	S
Crowned and laminated roof	S
Seamless TPO roof covering	S
Roof ladder	S
Power entrance step	S
80" tall radius entrance door	S
Metal trunk boxes with felt lining	S
Entertainment plug-ins in exterior trunk box	S
Patio awning	S
Slideroom awnings	S
Automatic leveling jacks	S
CSA Upfit (mandatory for all Canadian provinces)	O
LP leak alarm	S
Fire extinguisher	S
Smoke detector	S
Carbon monoxide detector	S
Emergency start switch	S
Entrance door dead bolt lock	S
Tinted safety glass windows	S
Owner's information package	S

### EXTERIOR & CONSTRUCTION

Power bath vent	S
50 amp power cord	S
55 amp electronic converter	S
Auxiliary coach battery	S
Second coach battery	S
GFI circuit	S
Coach battery disconnect	S
Outside 120-volt receptacle	S
Cable TV jacks	S
Patio light	S
6.5 KW gasoline generator	S
Coach command center	S
Lighted storage boxes with switch at entry door	S
Porcelain toilet with foot flush	S
6-gallon gas/electric E.I. water heater	S
No-Mess™ Termination System	S
Demand water pump	S
Skylight over shower	S
Glass shower enclosure	S
One-piece ABS tub surround	S
Heated holding tanks	S
Whole house water filter	S
Black tank flusher system	S
5,000 lb. towing hitch	S
One-piece windshield	S
Vinyl graphics	S

## SPECIFICATIONS

2009 PURSUIT	3100 DS	3540 DS	3550 TS
Chassis	Ford/Workhorse	Ford/Workhorse	Ford/Workhorse
Chassis Model	F-53/W20	F-53/W22	F-53/W22
Engine Size (liters)	6.8/8.1	6.8/8.1	6.8/8.1
Wheel Base	228"	242"	242"
Rear Axle Ratio	5.38/5.13	5.38/5.13	5.38/5.13
GVWR (lbs.)	20,500	22,000	22,000
CW (lbs.)	17,580*	18,410*	18,770*
GCWR (lbs.)	26,000	26,000	26,000
Interior Height	80"	80"	80"
Exterior Height**	12'1"	12'1"	12'1"
Exterior Length	32'7"	34'10"	34'10"
Exterior Width	8'3"	8'3"	8'3"
Sleeping Capacity	4	5	6
Exterior Storage Capacity (Cu. Ft.)	120	150	150
Fuel Capacity (gal.)	75	75	75
Fresh Water Capacity (gal.)	80	80	80
Waste Water Capacity (gal.)	45	45	45
Grey Water Capacity (gal.)	48	48	48
Water Heater Capacity (gal.)	6	6	6
Tire Size	245/70R19.5F	245/70R19.5F	245/70R19.5F
LP Gas Capacity (lbs.)	85	85	85

**GVWR (Gross Vehicle Weight Rating):** The maximum permissible weight of the unit, including the U/VW plus all fluids, cargo, optional equipment and accessories. For safety and product performance, do not exceed the GVWR.

**CW (Curb Weight):** The weight of the unit without factory or dealer installed options, plus allowance for the weight of full fuel capacity. The "payload capacity" for all other fluids, cargo, occupants, optional equipment and accessories can be determined by subtracting the CW from the GVWR.

**GCWR (Gross Combined Weight Rating):** The maximum total weight of the loaded unit, plus a tow vehicle, fuel for each, all other fluids, cargo, occupants, optional equipment and accessories.

**Wider Widths:** Numerous George Boy floorplans feature the "wide body" design concept, which gives you significantly enhanced interior living space and allows for a wide variety of uses, extended trips with two people or short trips with multiple people. Accordingly, each unit allows ample room for sleeping, seating, fluids and cargo. While the customer is the beneficiary of this design, the customer also bears the responsibility to select the proper combination of passengers, cargo, load, and tow vehicle without exceeding the chassis weight capabilities. Consumer may need additional braking capacity to tow loads greater than 1,000 pounds. Seat belts should always be worn for passenger safety. Seat belts are provided at most locations to allow convenience in selecting which seat to occupy. However, it is not intended that all seating positions equipped with seat belts be occupied while the vehicle is in motion, without regard to other weight factors. All George Boy motorhomes are designed to ensure that the number of passengers allowed while the vehicle is in motion will always at least equal the stated sleeping capacity. Though seat belts may be provided, for your safety and the proper operation of your vehicle, limit your passengers to the number allowed by the Net Carrying Capacity of your vehicle.

\*Weights are estimated  
\*\*Includes Roof A/C

## FULL PAINT OPTIONS

### TAN



### SILVER



# Pursuit.

For weekends. For life.



You've decided to travel. Freedom has never meant more to you. You've planned for this day, and now it's here.

At Georgie Boy, we've been in the recreational vehicle business since 1968. Our goal is to design and build motorhomes that can keep up with the explorer in you. This means working hard to ensure that every detail of your new Georgie Boy is right – before you turn the key. Of course, our commitment to quality also means a few late-night trips to the coffee maker.

**Your Georgie Boy Dealer**



Georgie Boy is a division of Coachmen RV Company, LLC

P.O. Box 30 ♦ Middlebury, IN 46540

Phone: 800.353.7383

[www.georgieboy.com](http://www.georgieboy.com)

All information contained in this brochure is believed to be accurate at the time of publication. However, during the model year, it may be necessary to make revisions and Georgie Boy reserves the right to make all such changes without notice, including changes in prices, colors, materials, equipment and specifications, as well as the addition of new models and the discontinuance of models shown in this brochure. Therefore, please consult with your Georgie Boy dealer and confirm the existence of any materials, design or specifications that are material to your purchase decision. 6/08

**Pursuit. 2009 CLASS A MOTORHOMES BY GEORGIE BOY**