

STARCRAFT®

THE FUTURE OF CAMPING | pure and simple.

SOLSTICE  
UPSCALE FIFTH WHEELS



# SOLSTICE

THERE'S A NIGHT AND DAY DIFFERENCE.





# INNOVATION THAT GOES TO INFINITY & BEYOND!

Solstice has been designed from the ground up to deliver stellar performance. Top luxury appointments abound in this mid-priced RV.



334CKRS



## PASS-THROUGH STORAGE.

Large, finished and lighted pass-through storage compartment is standard along with a handy power cord reel. Take it all with you on your next mission.



## HI-RISE TRIPLE ALUMINUM ENTRY STEP.

Our manual entry step system gives you safe, easy entry with three convenient steps, lighted entry and folding grab handle (not pictured here).



## TOP QUALITY SLAM LATCHES.

Oversized, pass-through baggage compartments feature large doors with slam latches and locks. The easiest-to-use and operate on the planet!



## ASTRONOMICAL FEATURES THAT SET US APART.



### OTHER-WORLDFLY WOOD CABINETS.

Elegant Honey-Glazed Cherry cabinetry features raised-panel design, modern handles and drawer pulls, and is pre-drilled and screwed together for optimum quality and longer lasting value.



### 18 CU. FT. RESIDENTIAL REFRIGERATOR OPTION.

This stainless steel residential-quality refrigerator (French door style and comes with a 1,000-watt inverter) delivers quality and function. A pantry and 8 cu. ft. fridge is standard on most models.



### THE MOTHERLOAD OF ALL CLOSETS!

Solstice floorplans feature large bedrooms with larger wardrobes than the average fifth wheel. Our master suite closet comes with a secret storage safe and much more.



### SPACE AGE DENVER® MATTRESS!

Our exclusive Denver Mattress Euro-Top Sleep System® comes as a standard feature. This top-brand mattress "cradles" pressure points—feels like you're sleeping in zero gravity!



### STARGAZER SKYLIGHTS AND SHOWER.

A 60-inch oversized one-piece fiberglass shower with molded-in bench seat features dual shower heads, shelves and expansive twin skylights for star viewing by night, and brightness by day.



### OUR EXCLUSIVE 102"-WIDE CRAFT.

Almost all other fifth wheels stop at 96" widths. For the same price or less, we offer 102" widths standard. The extra space is evident in wider hallways and a more expansive living area!





334CKRS





## CRAFTED FOR LUXURY. LOOK INTO IT!



### LIVING ROOM.

Standard luxuries include deep overhead cabinets, comfortable glider chairs, large panoramic slide room windows, premium vinyl flooring, Shaw® brand stain-resistance carpeting and more.

### KITCHEN.

Notice LG solid-surface counter-tops, polished Nickel fixtures, large double-bowl sink, oversized pots/pans drawers, slide out pantry (on most models), high-end appliances and much more!

### BEDROOM.

A large master suite closet with separate washer and dryer prep and Denver® pillow-top memory mattress are standard along with a 60" x 80" Queen bed, under-bed storage and more.

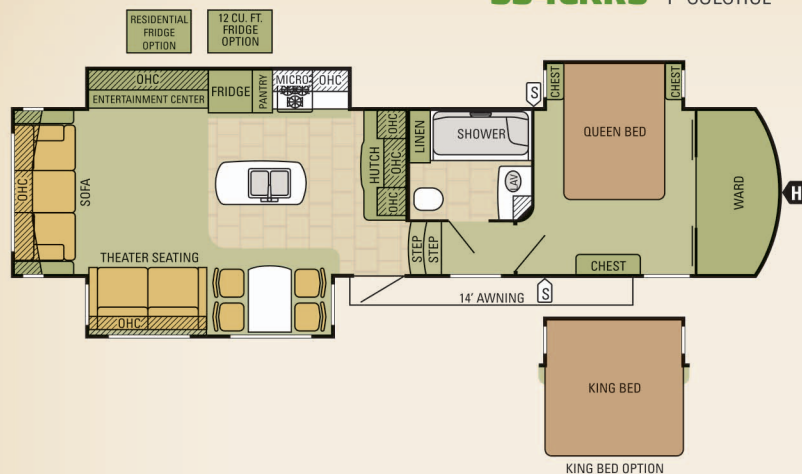
### BATHROOM.

Huge 60" shower is king-sized! You'll also find standard features like porcelain toilet with foot flush, upgraded countertop, oversized mirror, power vent, and glass enclosure to name a few.

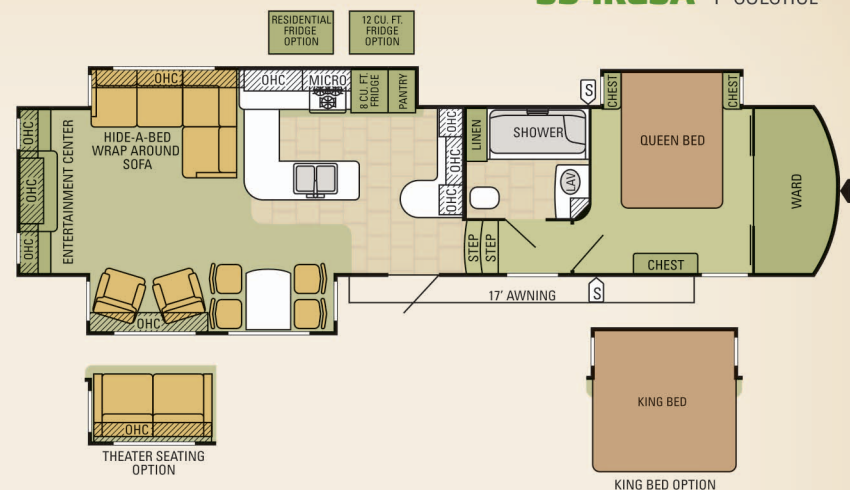


# SOLSTICE FLOORPLANS

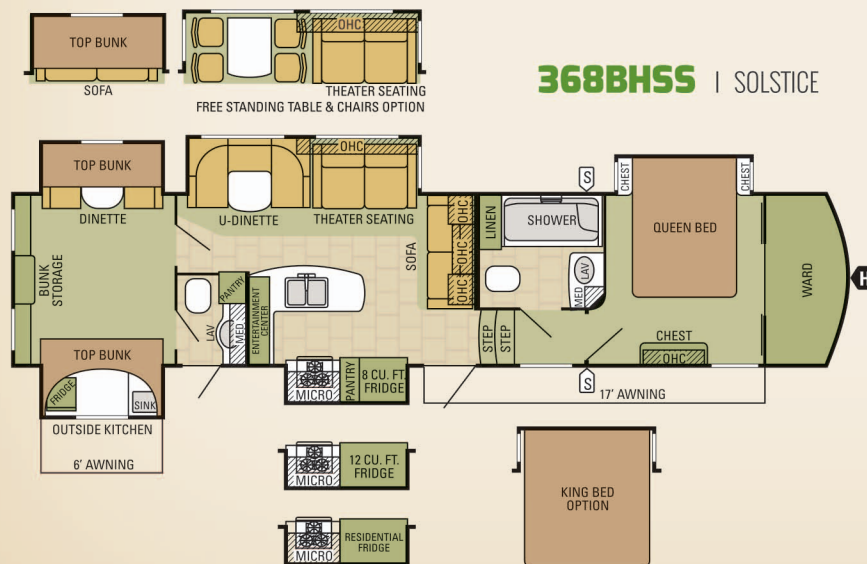
**334CKRS** | SOLSTICE



**354RESA** | SOLSTICE



**368BHSS** | SOLSTICE



## SPECIFICATIONS

	334CKRS	354RESA	368BHSS
Unloaded Vehicle Weight (lbs.)	10665	11445	12125
Dry Hitch Weight (lbs.)	2277	2455	2335
Gross Vehicle Weight Rating (lbs.)	14995	15750	16500
Cargo Carrying Capacity (lbs.)	4330	4305	4375
Exterior Length	39' 2"	41' 7"	41' 8"
Exterior Width	102"	102"	102"
Exterior Height with A/C	153"	153"	153"
Interior Height (bedroom)	77"	77"	77"
Wheel Base	285 - 3/8"	301 - 13/16"	302 - 13/16"
Fresh Water Capacity (gals.)*	72.6	72.6	72.6
Gray Wastewater Capacity (gals.)	87	87	87
Black Wastewater Capacity (gals.)	50	50	94
Sleeping Capacity	3-4	3-4	6-9

\*Includes water heater tank



# UFO

## UNBELIEVABLE FEATURES & OPTIONS.

### POPULAR STANDARDS

- 102" Wide Exterior (6" wider hallways)
- Drop-Frame Front Basement Storage Area
- 5/8" Tongue-and-Groove Plywood Floor Decking with Enclosed Underbelly (R-24)
- Oversized Pass-Thru Baggage Doors with Slam-Latch Style Handles
- 30# LP Bottles with "Easy Slide" Storage Tray
- Hi-Rise Triple-Entry Aluminum Steps
- Solid Wood Core Cabinets
- Predrilled and Screwed Cabinetry
- 10 Gal. Gas/Electric W/H with DSI
- 20 Gal/Hr Quick-Recovery Mode Water Heater
- Washer/Dryer Prep (fits a two-piece)
- 60" King-Size Fiberglass Shower w/ Dual Shower Heads

- Dual Skyview Skylights Over Shower
- Master Suite Wardrobe Closet
- Champagne Hi-Gloss Gel-Coat Fiberglass Sidewalls
- Electric Awning with LED Lights
- Electric Rear Stabilizer Jacks
- Tinted Safety Glass Bonded/Frameless Windows
- Equa-Flex Suspension
- Universal Docking Center
- Manual Power Cord Reel
- Arctic Insulation Package
- Enclosed and Heated Underbelly
- Seamless Underbelly Panel
- 12V Heat Pads on Holding Tanks
- Heated Holding Tanks
- Enclosed, Heated Dump Valves
- Honey Glazed Cherry Cabinetry
- Lauren Ashley Brand Top-Stitch Furniture
- Quality Hide-A-Bed w/Memory Foam Mattress

- Comfort Care Ducting System w/Dual 13,500-BTU "Quiet Cool" AC's (Dual Zone Control)
- 12V FM/AM/CD/USB Stereo w/Bluetooth and Speakers in Living/Bedroom/Outside
- Range w/Sealed Burners & Glass Range Top
- 30" Samsung Residential Microwave (stainless steel)
- Queen 60"x 80" Denver Mattress Pillow-Top Memory Foam Mattress

### POPULAR OPTIONS

- Residential refrigerator with 1,000-watt inverter
- Washer/dryer (two-piece)
- King 72"x 80" Denver mattress
- Generator prep
- More options available

FOR MORE STANDARD AND OPTIONAL FEATURES GO TO [starcraftcamping.com](http://starcraftcamping.com)

## SPACE AGE CONSTRUCTION FEATURES.

For over 50 years Starcraft RV's reputation has been built around top-quality products, designed to provide years of trouble-free use and backed by a 2-year limited warranty. Innovation starts with a solid foundation. Compare us and you'll see just how much care and meticulous attention to "doing it right" goes into every Starcraft fifth wheel.



SEE THE FULL COMPARISON ONLINE AT [STARCRAFTCAMPING.COM](http://STARCRAFTCAMPING.COM)



**US** 4,500 lbs. on a Starcraft roof!



**THEM** Same weight on a competitor's style roof.



**US** Vertical wood studs for added support.



**THEM** Little aluminum brace, if that.

## STRONGEST ROOF EVER!

Strength is one of the basic principles of engineering; the stronger something is built, the longer it will last. At Starcraft, we understand strength comes from within, which is why we focused on the smallest of details when constructing our exclusive Magnum Roof System. From sturdier vertical studs to 7" header beams, we pride ourselves on staying at the top of our game—building stronger products that last.



**US** We use large oversized nail plates on both sides.



**THEM** They use smaller and only on one side of truss.



Our standard Arctic Package extends your camping season, providing protection against cooler temperatures with its insulated, heated and enclosed underbelly.



Using TuffShell vacuum-bonded lamination, our walls combine welded aluminum framing, fiberglass sidewalls and metal backers, ensuring your camper can handle the toughest conditions.



# SOLSTICE. THE FUTURE OF CAMPING JUST GOT BRIGHTER!

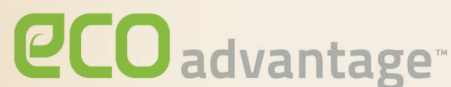


**LANDED IN 1964.** Starcraft is one of the oldest and most respected names in the RV industry. In fact, we've been around since 1903. Back then, we made our name building livestock tanks and other metal farm equipment. In the 1920's, we added a variety of boats to our product lineup. And in 1964, we entered-and revolutionized-the modern camping industry.



## UNHEARD OF 2-YEAR WARRANTY.

The Starcraft warranty is a manufacturer's limited warranty. Each Starcraft is warranted to the original purchaser for 24 months from the original date of purchase against defects in materials and workmanship. For a copy of the limited warranty with full terms and conditions, ask your local Starcraft RV dealer.



**SAVING THE PLANET.** The Starcraft EcoAdvantage™ is our company's commitment to protecting the environment. Through smart sustainability efforts, we're creating better ways to build better RVs using fewer or renewable natural resources. This is our commitment to you—to build a better RV so that we can do a better job of protecting our planet.

## GET MORE OF WHAT YOU NEED IN CYBERSPACE.



Explore more Starcraft RVs by visiting our world-class website. This advanced, digital-age-friendly site offers more product photo galleries, construction information, videos, the latest floorplans, specifications and other great features to assist you. Find your closest dealer, customer service info and more!

[STARCRAFTCAMPING.COM](http://STARCRAFTCAMPING.COM)

**ROADSIDE ASSISTANCE.** Travel worry-free with the complimentary one-year Roadside Assistance program through a third-party provider, which gives you immediate access to dependable roadside assistance with a simple phone call. Check with your local dealer to learn more (available at participating dealers).

## SEE YOUR LOCAL STARCRAFT DEALER:

**STARCRAFT**®

THE FUTURE OF CAMPING | pure and simple.

536 Michigan Street  
Topeka, IN 46571 USA

Phone: (800) 945-4787  
Web: [starcraftcamping.com](http://starcraftcamping.com)

FOR INTELLIGENT LIFE  
FOLLOW US ON:



All information contained in this brochure and on the Starcraft RV website is the latest available at the time of publication approval. Starcraft reserves the right to make changes and to discontinue models without notice or obligation. Photography may show optional equipment or props used for decoration purposes only. RVs built for sale in Canada may differ to conform to Canadian codes. Check with your Starcraft dealer for the latest in specifications, standard and optional equipment. 11/14

© 2014 STARCRAFT RV, INC.