

Chieftain®

2000 WINNEBAGO®



If you're looking for a world-class motor home, set your sights on the Chieftain.

As the proud flagship of the Winnebago line, the 2000 Chieftain is brimming with innovation and comfort. In fact, the number of standard features available on most models will pleasantly surprise you. Our TrueAir™ Residential Central AC is located below the floor which eliminates AC condensation on the roof and gives the coach a sleeker appearance. The OnePlace™ Systems Center centralizes frequently used switches and gauges into one location. And the PowerLine™ Energy Management System monitors electrical usage to optimize available power. Once you see everything the Chieftain has to offer, you'll realize just how enjoyable your travels can be.



**L34Y in Oasis** Luxurious appointments and thoughtful design abound in the Chieftain. The StoreMore™ Slideout opens up the living area and angled galley while creating abundant storage. Fluorescent ceiling lights feature wall-mounted controls, and cabinet-mounted directional reading lights offer perfect accent lighting for reading.

**L35U** A residential-quality interior with single-handle vanity you never left home.



**L35U in Calypso** Your favorite shows take center stage on the giant 25" TV, which is satellite system ready. And the noise and vibrations associated with roof-mounted air conditioners are a thing of the past, thanks to our TrueAir air conditioner's location below the floor. (NA on the 36L)



**L36W in Barbados** The extra space we created in Chieftain's bedroom makes the perfect vanity area or workstation, and includes an additional phone/modem jack. The slideout feature provides plenty of room to walk around the spacious 60"x 80" bed. And there's even a built-in 19" TV.



**L34Y** The fully equipped cab comes with a passenger-side shelf, dash antenna warning light, and available pull-out work station and Sony® rearview monitor system. Both the captain and passenger chairs are available in leather, and the passenger chair is available with a footrest. A low-profile engine cover provides easy access.



**L35U** A residential-height toilet and full-size shower with single-handle faucet will make you feel like you never left home.



**L34Y** The entrance features sturdy interior and exterior assist handles. The auxiliary battery disconnect switch is located inside the door. The KeyOne™ system lets you open most doors with just one key.



arger-side shelf,  
t work station and  
and passenger  
chair is available  
es easy access.



**L34Y in Oasis** For your gourmet endeavors, the galley is equipped with a standard solid-surface counter top, residential over-the-range microwave, single-lever faucet, a large double-well stainless steel sink and coffee maker.

Generous amenities and attention to fine detail put the Chieftain into a class of its own.



The OnePlace Systems Center places important and frequently used switches and gauges into one convenient location. (NA on the 36L)



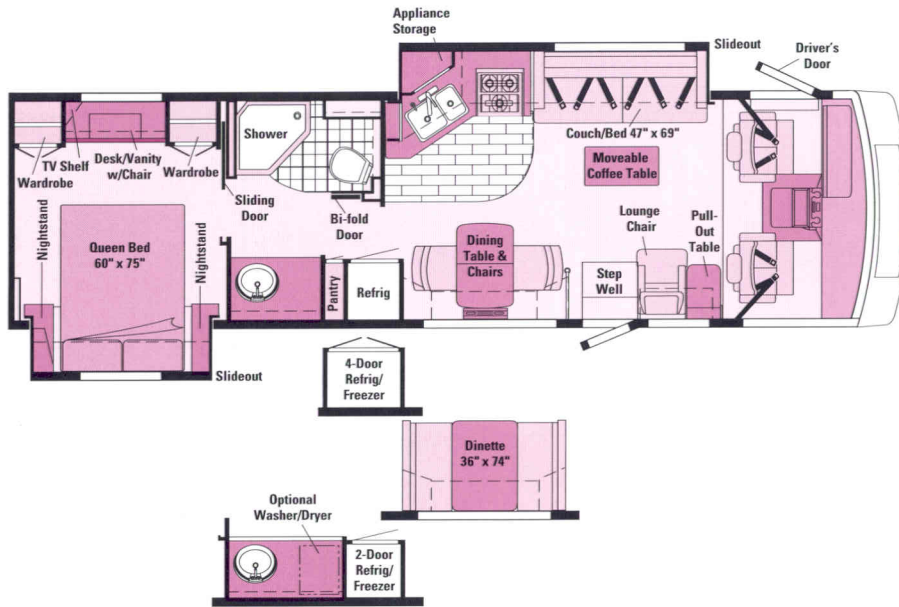
Our StoreMore Hydraulic Slideout System creates extra living space without sacrificing storage space. Large, lit compartments extend with the room for easy access. Doors with single-paddle latches open easily with one hand.



These wider door handles make it easier to open and close cabinet doors and drawers.

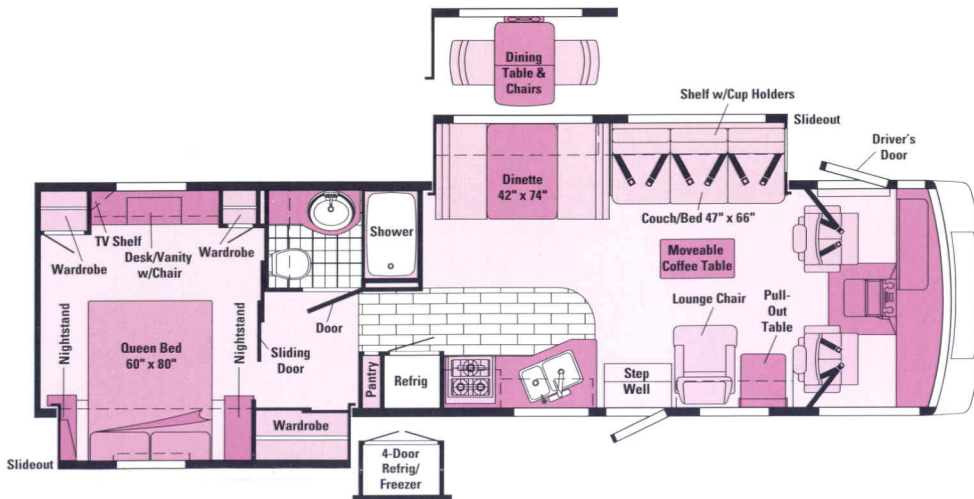


**L35U** An innovative awning rail with built-in gutter keeps things dry by channeling water to the front and rear of the coach. And unlike rubber roofs, the one-piece, seamless fiberglass roof resists tearing, fading, chalking and deterioration.



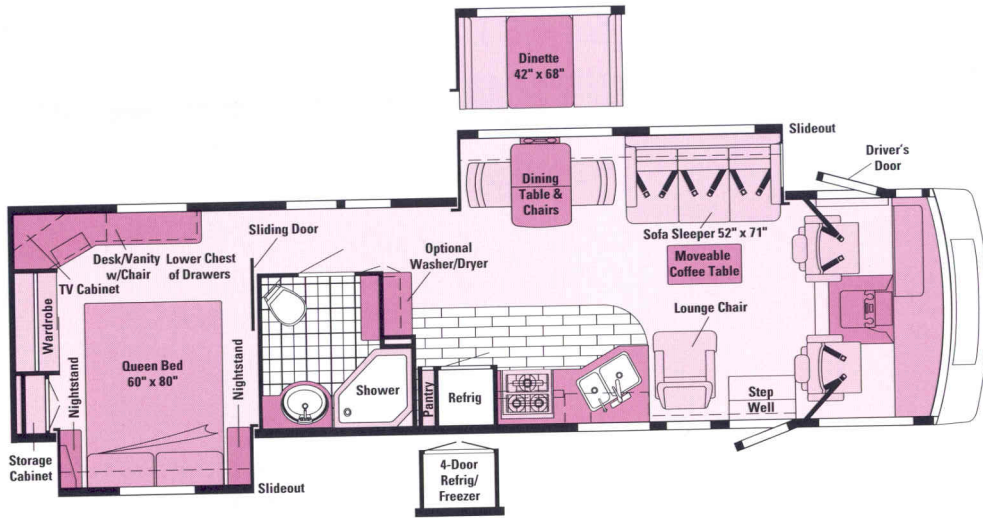
### 34Y

- Angled galley/couch and bedroom slideout floorplan.
- Widebody basement design.
- Neo-angle shower with textured glass door.
- Lounge chair and pull-out table.
- Desk/vanity in the bedroom.



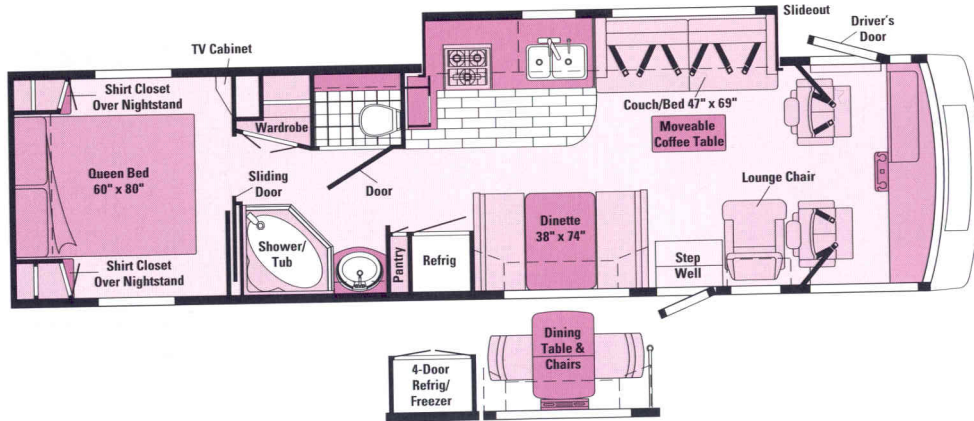
### 35U

- Dinette/couch and bedroom/wardrobe slideout floorplan.
- Widebody basement design.
- Lounge chair and pull-out table.
- Desk/vanity in the bedroom.



### 36W

- New dining table/sofa sleeper and bedroom slideout floorplan with side aisle.
- Widebody basement design.
- Neo-angle shower with textured glass door.
- Large bedroom desk/vanity and large rear wardrobe.



### 36L

- Galley/couch slideout floorplan.
- Widebody basement design.
- Split bath design with tub/shower and textured glass door.
- Available dining table and chairs.



Standard Vinyl Flooring



Standard Woodgrain Vinyl Plank Flooring



Seat Belts

Note: Dimensions shown are for sleeping space only and dashed lines denote overhead storage areas.

# e of the Chieftain's spacious floorplans.



## 2000 CHIEFTAIN SPECIFICATIONS

	34Y	35U	36W	36L
Length	34'11.1"	35'6.2"	36'4.2"	35'10.5"
Exterior Width†	8'5.5"	8'5.5"	8'5.5"	8'5.5"
Interior Height	6'8"	6'8"	6'8"	6'8"
Interior Width	8'0.5"	8'0.5"	8'0.5"	8'0.5"
Fuel Capacity	75 gal.	75 gal.	75 gal.	90 gal.
Fresh Water Capacity w/Heater*	86 gal.	86 gal.	86 gal.	92 gal.
Holding Tank Capacity - Black/Gray	58/67 gal.	40/54 gal.	45/67 gal.	55/53 gal.
LP Capacity◇	28 gal.	28 gal.	28 gal.	39 gal.
Wheelbase	216"	228"	228"	242"
Exterior Height‡	11'8"	11'8"	11'8"	12'2" (To top of AC Unit)
Exterior Storage	69 cu.ft.	72.4 cu.ft.	70.48 cu.ft.	122.6 cu.ft.
GVWR	20,500 lbs.	20,500 lbs.	20,500 lbs.	26,350 lbs.

	34Y	35U	36W	36L
<b>AUTOMOTIVE</b>				
<b>Chassis - Ford</b> 6.8L V-10 @ 275-HP, 130-Amp. Alternator, Anti-Lock Brake System	S	S	S	
<b>Chassis - Freightliner</b> Cummins ISB 5.9L Turbo Diesel 275-HP, Engine Block Heater, Jacobs Extarder Exhaust Brake, 160-Amp. Alternator, Allison MD-3060 6-Speed Transmission, Air Brakes, Air Suspension				S
<b>Tires (Radial)</b>	S	S	S	S
<b>DRIVER CONVENIENCES</b>				
<b>3-Point Retracting Seat Belts (Drv./Frt. Pass.)</b> w/Adjustable 4-Position D-Loop, Seats w/Reclining High-Back Design, Hinged Armrests, Lumbar Support (Driver's Seat), Swivel/Slide Pedestal, Lap Belts in Selected Areas	S	S	S	S
<b>12-V Electrical Supply/Lighter</b>	S	S	S	S
<b>Auxiliary 12-V Receptacle</b>	S	S	S	S
<b>Battery Charge Control</b> Dual, Automatic	S	S	S	S
<b>Battery Charger (Solar)</b> Wiring Prep	S	S	S	S
<b>Battery Charger (Solar)</b> 10-Watt	O	O	O	O
<b>Battery Disconnect System</b> , Coach Batteries	S	S	S	S
<b>Center Console Cabinet</b>				S
<b>Convenience Tray</b>	S	S	S	
<b>Cruise Control, Steering</b> Power Assisted w/Tilt Wheel	S	S	S	S
<b>Defroster Fans</b> Auxiliary 2-Speed	O	O	O	O
<b>Driver's Door</b> w/Roll-Down Window	S	S	S	S
<b>Driver's Seat</b> Six-Way Power Assist	O	O	O	O
<b>Fog Lamps, Hood Release</b> Exterior Key Locks	S	S	S	S
<b>Heating/Air Conditioning</b> Automotive Blend Air System	S	S	S	S
<b>Map Light, Pleated Shade</b> Front Wrap-Around w/Wands	S	S	S	S
<b>Mirrors (Rearview)</b> Ext., Low Mounted, Electric w/Remote & Defrost	S	S	S	S
<b>Passenger Seat w/Footrest</b>	O	O	O	O
<b>Rearview Monitor System</b> Cable Ready	S	S	S	S
<b>Rearview Monitor System (Sony®)</b> Video/One-Way Audio	O	O	O	O
<b>Rubber Floor Mats</b>	S	S	S	S
<b>Service Light</b> Driver's Side, Exterior	S	S	S	S
<b>Start Circuit</b> Auxiliary	S	S	S	S
<b>Storage Cabinet</b> (Front & Side Overheads)	S	S	S	S
<b>Sunvisors, Window Shades (2)</b> Roller, Light Filtering	S	S	S	S
<b>Leather Insert w/Vinyl Surround Seats</b> Drv. & Pass	O	O	O	O
<b>Wall Shelf</b> Passenger, beverage holder	S	S	S	S
<b>Window</b> Passenger Slider w/Screen	S	S	S	S
<b>Windshield Wipers (Intermittent)</b>	S	S	S	S
<b>Work Station</b> Pull-Out, Dash Mounted, Passenger Side, 110-V Outlet, Telephone Jack	O	O	O	O
<b>ENTERTAINMENT</b>				
<b>Antenna (Radio)</b> Roof-Mounted, Flexible Rubber	S	S	S	S
<b>C.B. Prep Kit</b> Ant., Coax Wiring, 12-V Power Connection	O	O	O	O
<b>CD Changer</b> Multi-Disc w/Remote	O	O	O	O
<b>Entertainment Center (Patio)</b> DC Receptacle, 110-V Outlet, TV Jack, Radio Antenna, AM/FM Radio w/Cassette or CD Player, Speakers (2), Table (NA 36W), Locking Door	O	O	O	O
<b>Satellite System Pre-Wiring</b> Roof	S	S	S	S
<b>Satellite System</b> Digital <sup>™</sup> w/Elevation Sensor	O	O	O	O
<b>Sound System</b> Deluxe, Amplifier, 6 Speakers	O	O	O	O
<b>Stereo (Cab)</b> AM/FM/Cassette Deck (Sony), Speakers	S	S	S	S
<b>Stereo w/CD Player (Cab)*</b> AM/FM (Sony), Speakers	O	O	O	O
<b>Stereo Power Switch</b> For Main or Auxiliary Battery Use	S	S	S	S
<b>Stereo System</b> Bedroom* AM/FM/Cassette	O	O	O	O
<b>Stereo System</b> Bedroom* w/CD Player	O	O	O	O
<b>Telephone Inputs (2)</b> Front Cab Area/Bedroom	S	S	S	S
<b>TV (13" Color) w/Remote</b> Located in Bedroom	S	S	S	S
<b>TV (19" Color) Stereo w/Remote</b> Located in Bedroom			S	
<b>TV (19" Color) w/Remote</b> Dinette Video Selection System	O			
<b>TV, Front (25" Color) w/Remote</b>	S	S	S	S
<b>TV Enhancement Package</b> Antenna (Amplified), DC Receptacles (2), Interior Jacks (2), Coax Wiring, Cable Input, Exterior Antenna Jack, Antenna Reminder Light	S	S	S	S
<b>VCR w/Remote</b>	O	O	O	O
<b>SLIDEOUT</b>				
<b>Slideout Room</b> (Driver's Side)* 20" Couch/Galley Extension (34Y & 36L), 30" Couch/Dinette Extension (35U & 36W) 36W with Flat Floor Design, Exterior Storage Compartments Slideout w/Room	S	S	S	S
<b>Slideout Room</b> (Pass. Side, Bedroom)* Approx. 24" Extension	S	S	S	
<b>INTERIOR</b>				
<b>Carpeting w/Pad</b>	S	S	S	S
<b>Ceiling Lights</b> Fluorescent, Recessed, Lounge & Galley	S	S	S	S
<b>Ceiling Vent</b> Fan, Lift & Remote Switch, Bath			S	
<b>Ceiling Vent</b> Non-Powered, Galley	S	S	S	S
<b>Ceiling Vent</b> Powered, Bathroom	S	S	S	S
<b>Ceiling Vent</b> Powered Ventilator Fan, Galley	O	O	O	O

	34Y	35U	36W	36L
<b>Refrigerator/Freezer</b> Large, Double-Door w/Icemaker	O	O	O	O
<b>Refrigerator/Freezer*</b> Four-Door w/Icemaker	O	O	O	O
<b>Sink (Double)</b> Stainless Steel, Covers, Tip-Out Utility Tray (34Y, 36L)	S	S	S	S
<b>Solid Surface Counter Top</b>	S	S	S	S
<b>Spice Rack</b>	S			
<b>Storage Drawers</b> below Dinette Seats	O	S	O	S
<b>Table &amp; Chairs</b> Flexsteel (2), Folding (2)	S	O	S	O
<b>Wall Border*</b> Decorative (NA in Oasis)	S	S	S	S
<b>Wastepaper Basket</b>	S	S	S	S
<b>Water Purification System</b> (Everpure)	S	S	S	S
<b>BEDROOM</b>				
<b>Bedsprad, Pillow Shams, Throw Pillow</b>	S	S	S	S
<b>Hamper</b>		S		
<b>Mattress (Serta®)</b> Innerspring, w/Non-Slip Mat, Access to Storage Below, Gas Springs	S	S	S	S
<b>Mirror</b> on Backwall	S	S		S
<b>Vanity Cabinet w/Folding Chair</b>	S	S	S	
<b>Wall Border*</b> Decorative	S	S	S	S
<b>Wall Lamp(s)</b> Decorative Style	S	S	S	S
<b>BATHROOM</b>				
<b>Clothes Rod</b> Removable		S		
<b>Flooring (Vinyl)</b>	S	S	S	S
<b>Lavatory Cabinet, Makeup Lights</b>	S	S	S	S
<b>Linen Cabinet</b>				S
<b>Magazine Rack</b>	S	S	S	S
<b>Medicine Cabinet(s)</b> Wood	S	S	S	S
<b>Mirror</b> Wall-Mounted	S	S	S	S
<b>Robe Hook</b>			S	
<b>Shower</b> Single Control Shower Head	S	S	S	
<b>Shower/Tub</b> Dual Control Shower Head				S
<b>Shower Door(s)</b> Textured Glass	S	S	S	S
<b>Sink</b> Oval, Large w/Ledge Back	S	S	S	S
<b>Skylight &amp; Shower Light</b>	S	S	S	S
<b>Toilet w/Foot Pedal</b> Porcelain, Tissue Holder	S	S	S	S
<b>Towel Bar(s)</b>		S		S
<b>Towel Ring(s)</b>	S		S	S
<b>EXTERIOR</b>				
<b>Awning Rail w/Gutter</b> (Both Sides)	S	S	S	S
<b>Awning*</b> Patio w/Metal Wrap	O	O	O	O
<b>Bumpers</b> Front: Molded into Front Cap, Rear: Steel Reinforced Styled Fascia	S	S	S	S
<b>Entrance Door w/Screen Door</b> Latch & Deadbolt Locks, Electric Steps w/Door-Activated Switch	S	S	S	S
<b>Graphics Package</b> Choice of Sahara Grey Metallic (Recommended w/Barbados & Oasis) or Forest Green Metallic (Recommended w/Calypto)	S	S	S	S
<b>High-Gloss Exterior</b> Fiberglass Skin Sidewalls	S	S	S	S
<b>Holding Tanks</b> Heated Compartment, Sewer Hose	S	S	S	S
<b>Ladder, Mud Flaps</b> Rear	S	S	S	S
<b>Outlet</b> 110-V, Curbside, Porch Light w/Interior Switch	S	S	S	S
<b>Storage Compartments</b> Single Paddle Latch, Locks	S	S	S	S
<b>Tire Tools</b> Wrench, Leverage Bar	S	S	S	S
<b>Trailer Towing Package, Trailer Wiring Extension</b>	S	S	S	S
<b>Wash Station</b> Pump Switch, Water Fill Door Lockable	S	S	S	S
<b>Wheel Liners</b> Stainless Steel	S	S	S	S
<b>Wheels</b> Stylized, Aluminum				O
<b>SYSTEMS</b>				
<b>30-Amp. Power Cord, Batteries (2)</b> Deep Cycle RV	S	S	S	S
<b>50-Amp. Power Cord*</b>	O	O	O	O
<b>Air Conditioners (2)</b> High Efficiency				S
<b>Central Air-Conditioning System</b> Ceiling Distribution, Wall Thermostat	S	S	S	
<b>Electrical Distribution System</b> Breaker Panels, Converter/Charger (45-Amp. 34Y, 55-Amp. 35U, 36W & 36L)	S	S	S	S
<b>Furnace</b> Ducted, Low Profile, 40,000 BTU	S	S	S	S
<b>Generator (Onan®)*</b> 5,000-Watt Gas	S	S	S	
<b>Generator (Onan®)</b> 6,500-Watt LP				S
<b>Generator (Onan®)</b> 7,000-Watt Gas	O	O	O	
<b>Generator (Onan®)*</b> Quiet Diesel™ 7,500-Watt				O
<b>Generator Prep Kit</b>	S	S	S	S
<b>Holding Tank Flushing System</b> Black Tank Only	S	S	S	S
<b>Home Comfort Plus Package</b> Heat Pump, Heater - Auxiliary Automotive, Roof Vents - Insulated Powered Ventilator Fan (Bath & Galley)	O	O	O	
<b>HWH® Hydraulic Leveling Jacks</b> Front & Rear	S	S	S	S
<b>Inverter (Interface®)</b> 130-Watt for TV/VCR (2 on 36W)	O	O	O	O

36W with Flat Floor Design, Exterior Storage Compartments Slideout w/Extension	S	S	S	
<b>INTERIOR</b>				
<b>Carpeting w/Pad</b>	S	S	S	S
<b>Ceiling Lights</b> Fluorescent, Recessed, Lounge & Galley	S	S	S	S
<b>Ceiling Vent</b> Fan, Lift & Remote Switch, Bath			S	
<b>Ceiling Vent</b> Non-Powered, Galley	S	S	S	S
<b>Ceiling Vent</b> Powered, Bathroom	S	S		S
<b>Ceiling Vent</b> Powered Ventilator Fan, Galley	O	O	O	O
<b>Clock</b> Decorative Style	S	S	S	S
<b>Coffee Table</b>	S	S	S	S
<b>Color Themes (Interior)</b> Choice of Barbados (Plum), Calypso (Neutral), Oasis (Blue) w/Waterford Oak or Salem Cherry Woodgrain	S	S	S	S
<b>Courtesy Lights (2)</b> w/Wall Switches	S	S	S	S
<b>Lamp</b> Decorative Style, Wall-Mounted in Lounge	S	S		S
<b>Picture(s)</b> Framed, Decorative	S			S
<b>Leather Furniture</b> Sofa	O	O		O
Sofa Sleeper			O	
Lounge Chair	O	O		O
<b>Wardrobe</b> Carpeted Floor, Clothes Rod, Mirrored Door(s) (35U, 36W, 36L), Wood Door (34Y), Five Drawers (34Y), Light, Shelf (36W & 36L)	S	S	S	S
<b>Windows</b> Tinted (Coach)	S	S	S	S
<b>Windows</b> Dual Glazed, Thermo-Insulated (Tip-Outs in Bedroom)	O	O	O	O
<b>Washer/Dryer*</b>	O		O	
<b>GALLEY</b>				
<b>Appliance Storage Cabinet</b>	S			S
<b>Coffee Maker</b> Counter Top Model	O	O	O	O
<b>Counter Extension</b> Flip-Up		S		
<b>Decorative Dinette Light</b>	S	S	S	S
<b>Flooring (Vinyl Plank)</b>	S	S	S	S
<b>Faucet</b> Single Control	S	S	S	S
<b>Fluorescent Light</b> Under Cabinet	S	S	S	S
<b>Halogen Light</b>			S	
<b>Microwave/Convection Oven w/Range Fan</b> Residential 30", Touch Control	S	S	S	S
<b>Pantry*</b> Slideout w/Adjustable Shelves, Locking	S	S	S	S
<b>Partition Glass</b>	S		S	
<b>Range Top</b> w/Storage below, Range Cover, 3 Burners (Magic Chef)	S	S	S	S
<b>Range w/Large Glass-Doored Oven</b> w/Drawer below, Range Cover, 3 Burners (Magic Chef®)	O	O	O	O
<b>Refrigerator/Freezer</b> Large, Double-Door	S	S	S	S

<b>Generator (Onan®)</b> 6,500-Watt LP				S
<b>Generator (Onan®)</b> 7,000-Watt Gas	O	O	O	
<b>Generator (Onan®)*</b> Quiet Diesel™ 7,500-Watt				O
<b>Generator Prep Kit</b>	S	S	S	S
<b>Holding Tank Flushing System</b> Black Tank Only	S	S	S	S
<b>Home Comfort Plus Package</b> Heat Pump, Heater - Auxiliary Automotive, Roof Vents - Insulated Powered Ventilator Fan (Bath & Galley)	O	O	O	
<b>HWH® Hydraulic Leveling Jacks</b> Front & Rear	S	S	S	S
<b>Inverter (Interface®)</b> 130-Watt for TV/VCR (2 on 36W)	O	O	O	O
<b>LP Tank</b> Permanent Mount w/Gauge	S	S	S	S
<b>Monitor Panel</b> Water, Holding & LP Tank Levels, Water Heater Ignition Switch w/Pilot Indicator Light, Water Pump Switch, Generator Hour Meter Gauge, Generator Start/Stop Switch, Battery Digital Voltmeter (NA 36L), Energy Management Display (NA 36L), Solar Panel/Battery Charger Light* (NA 36L), Battery Condition Gauge (36L Only)	S	S	S	S
<b>OnePlace Systems Center</b> Includes Monitor Panel, Thermostat, PowerLine Panel, Solar Indicator Charge Light*	S	S	S	
<b>PowerLine Energy Management System</b>	S	S	S	S
<b>Service Center</b> Provides Access to Cable TV & Telephone Inputs, City Water Hookup/Tank Diverter Fill, Exterior Wash Station w/Pump Switch, Sewer Hose, Drainage Valves, Power Cord	S	S	S	S
<b>Water Heater</b> 6-gal., Electronic Ignition	S	S	S	S
<b>Water Heater</b> 10-gal., Electronic Ignition 120-V AC/LP Gas w/Motoraid	O	O	O	
<b>Shoreline/Generator Automatic Changeover Switch</b>	S	S	S	S
<b>Water Heater Winterization Bypass Valve</b>	S	S	S	S
<b>Water Pump (Demand)</b> w/Accumulator Tank	S	S	S	S
<b>Water System Winterizing System</b> Automatic	O	O	O	O
<b>Water System Winterizing Valve</b>	S	S	S	S
<b>Water Tank Drain</b> 1" (1½" 36L)	S	S	S	S
<b>SAFETY</b>				
<b>3-Point Retracting Seat Belts</b> (Drv./Frt. Pass.) w/4-Position Adjustable D-Loop	S	S	S	S
<b>Assist Handle*</b> Exterior, Acrylic	S	S	S	S
<b>Carbon Monoxide Detector/Alarm, LP Leak Detector/Alarm, Smoke Detector/Alarm</b>	S	S	S	S
<b>Daytime Running Lamps</b>	S	S	S	
<b>Fire Extinguisher (10-B.C.)</b>	S	S	S	S
<b>Ground Fault Interrupter</b>	S	S	S	S
<b>High Mount Brake Light</b>	S	S	S	S
<b>Lap Belts</b> in Selected Areas	S	S	S	S
<b>Windshield</b> Laminated Safety Glass	S	S	S	S
<b>Window</b> Escape	S	S	S	S
<b>WARRANTY</b>				
<b>12-Month/15,000-Mile Basic Warranty, 36-Month/36,000-Mile Warranty on Structure**, 10-Year Limited Parts &amp; Labor Warranty on Roof</b>	S	S	S	S

The Chieftain floorplans feature a widebody design – over 96." In making your purchase decision, you should be aware that some states restrict access on some or all state roads to 96" in body width. Before making your purchase decision, you should confirm the road usage laws in the states of interest to you.

Not all items available in combination. See dealer for details. NA=Not Available ◇ Capacities shown are tank manufacturer's listed water capacity (W.C.). Actual filled LP capacity is 80% of listing due to overfilling prevention device on tank.

The height of each model is based on the curb weight of a typically equipped unit on the standard chassis. The actual height of your vehicle may vary by as much as 2" depending on chassis or equipment variations.

\*See your dealer for complete warranty documentation information. ☺ TV satellite system options do not include programming activation or receiver. Quality reception is only available in the lower 48 States.

†Inneco Industries' continuing program of product improvement makes specifications, equipment, model availability and prices subject to change without notice. Comparisons to other motor homes are based on the most recent information available.



# Not all motor homes are built the same, or supported the same.

When you purchase a Winnebago Chieftain you benefit from unique advantages, beginning with some of the most comprehensive warranty programs in the industry. It includes a 12-month/15,000-mile basic protection plan, 36-month/36,000-mile warranty on the structure and a standard 10-year limited parts and labor warranty on the roof.

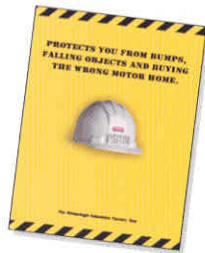


Mechanical emergency while on vacation? Go to your nearest Winnebago Industries dealer. TripSaver guarantees that qualifying, in-stock emergency warranty repair parts will be air-shipped from our factory within 24 hours. Plus, every new purchase comes with a one-year membership in our Premium Roadside Assistance Program, a 24-hour nationwide plan that covers road emergencies with free services like jump starts, tire changes, fuel delivery and lockout assistance.



In addition, Winnebago Industries vehicle owners are eligible to enroll in the Winnebago-Itasca Travelers (WIT) Club. As a member, you'll enjoy many benefits including mail forwarding, trip planning, rallies, caravans and more.

To learn more about what separates our motor homes from others, ask for this free guide next time you visit your Winnebago Industries dealer. It explains our superior manufacturing process. Use it to learn more about important safety and quality considerations as you shop for the motor home that's best for you.



Visit us at [www.winnebagoind.com](http://www.winnebagoind.com)

Seat belts are your most important hook-up. Always buckle up.

## Interiors

Barbados  
with Waterford Oak  
or Salem Cherry



Calypso  
with Waterford Oak  
or Salem Cherry



Oasis  
with Waterford Oak  
or Salem Cherry



## Exterior Valance Panels



Forest Green



Sahara Grey

This year's exterior valance colors are Forest Green, suggested with Calypso; and Sahara Grey, suggested with Barbados and Oasis. However, you may order either exterior color, regardless of your interior color choice.



The Chieftain 36L Diesel Pusher features an air suspension system for the ultimate in passenger comfort. Like all Chieftains, the 36L features our single-piece fiberglass roof which is so strong, it is backed by a 10-year limited parts and labor warranty.