

SUNCRUISER



2 0 0 0



Suncruiser

We've done our



37G IVORY COAST

In keeping with our desire to build a motor home that is as much like home as possible, we designed a central air conditioning system called **TRUEAIR**. Its air conditioning unit is located in the basement with ducts running through the coach's ceiling providing improved cooling and quieter operation. The TrueAir system streamlines the coach and offers better air quality by using residential-style filters instead of thin foam pads. Like other electrical features located throughout the coach, the TrueAir system relies on the **POWERLINE** Energy Management System. This "smart" system monitors the electrical load and allows continuous use of the air conditioning system on 30-amp service.

Introducing the most researched motor home ever — the new 2000 Itasca® Suncruiser®. Much more than simply an updated model, the Suncruiser has been completely redesigned, with the goal of offering the most home-like environment possible. Using extensive customer input and research, Winnebago Industries' designers carefully applied their findings to all areas of the coach. The result? A motor home that, we believe, is more like home than anything else in its class.



37G IVORY COAST

The 2000 Suncruiser features many upgrade items including Flexsteel® furniture and a large 25" TV. Durable, luxurious Ultraleather HP™ driver and passenger seats, plus a six-way power assist driver's seat, are also available. Thanks to the dinette/couch **STOREMORE**™ slideroom, there is also increased space in the living area.

Up front, you'll find a lower profile engine cover for easier access to and from the cab area, and a new convenience tray, which includes two beverage holders and hidden storage space below.



AEGEAN 35U



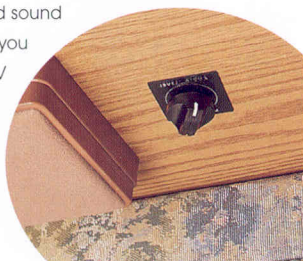
The new, ergonomic instrument panel features an available rear view monitor, control switches with large labels, an antenna/satellite dish reminder light, as well as the controls for the touch pad leveling jacks. A satellite dish with elevation sensor is also available.

homework.



Some of the little items that make a big difference in the new SunCruiser include larger labeling on switches, a large handrail for safer access in and out of the vehicle, ceiling lights that are controlled from one location by a wall switch, and convenient, directional reading lights which are located throughout the coach.

The standard sound system gives you command of the TV and stereo volume with convenient volume controls located next to the speaker.



Why move all around the coach to keep an eye on your systems? With the **ONE PLACE** Systems Center, your important control panels, switches and indicators are located in one centralized area.



Next to the galley you'll find a large pull-out pantry, complete with easily adjustable shelves.



Large 4" door and drawer handles are another example of the user-friendly enhancements found throughout the SunCruiser. The drawers also include new sturdy guides which feature a secure, positive lock and are designed to handle heavier loads.

SunCruiser's galley may very well rival your home's kitchen. It includes a Maytag® range top with sealed burners, a residential over-the-range microwave, an available side-by-side Dometic® Dimensions refrigerator with woodgrain raised-panel inserts (not shown), solid surface countertops, a built-in coffee maker, a single lever faucet with a pull-out sprayer, and a built-in spice rack.



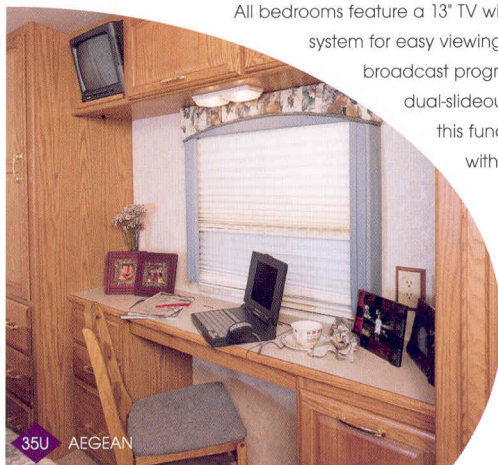
IVORY COAST 37G

Suncruiser



35U AEGEAN

The 35U's dual-slideout design makes this one of the most exciting floorplans available. The bedroom incorporates an extra-large mirror-doored wardrobe and increased usable floorspace by extending the slideout.



35U AEGEAN

All bedrooms feature a 13" TV wired into a video selection system for easy viewing of either videotapes or broadcast programming. The 35U's smart dual-slideout floorplan also includes this functional desk/vanity area with a folding chair.

The inviting bedroom is appointed with beautifully finished woodwork, including rich cabinetry and a chair rail molding, high-line bedsreads and stylish window treatments.



IVORY COAST 37G



37G IVORY COAST

The bathroom has been reconfigured to maximize space. In addition, we made many enhancements which add up to overall comfort. For instance, on most models, you'll find a built-in hair dryer as well as a larger, deeper shower with a lower step-over height (not available on 37G), and an integrated foot rest.



35U

The rechargeable portable vacuum and rechargeable flashlight sure come in handy when you need them and stow away neatly when not in use.



37G

This private toilet area features an upgraded residential height porcelain toilet.

SUNCRUISER DECOR OPTIONS

To assure their strength and durability, fabrics selected for use in the SunCruiser must pass a series of rigorous tests. Just one example is the "double rub" test, where a machine mechanically simulates a person getting in and out of a seat up to 30,000 times. (This equates to nearly four times a day for over 20 years!)



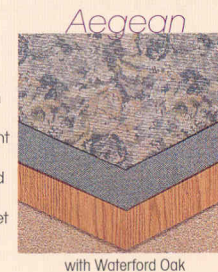
with Waterford Oak

Main
Accent
Wood
Carpet



with Waterford Oak

Main
Accent
Wood
Carpet



with Waterford Oak

Suncruiser



Some of the advantages of our innovative **TRUEAIR** central air conditioning system include the elimination of roof pods which gives the coach a more streamlined appearance and a lower exterior height. It also eliminates air conditioner condensation run-off that can create streaks and stains all along the coach and awning.

We take great pride in our commitment to building superior motor homes. And it all starts with our solid **SUPER STRUCTURE** construction. Outriggers and the support substructure are mounted to the chassis using an advanced laser alignment system to ensure a square foundation upon which to build. Interlocking sidewall and roof joints provide superior strength and excellent load bearing capabilities. The result is one of the strongest body constructions in the industry.

The slideout storage compartments use our revolutionary **STOREMORE™** Hydraulic Slideout System. It allows interior overhead cabinets and exterior storage compartments to extend with the slideroom. For easy loading and unloading, lights are located within the exterior storage compartments.



The main entrance door area includes both interior and exterior assist handles to make getting into and out of the coach safe and easy. The auxiliary battery disconnect switch has been relocated to this area for more convenience.





Our extraordinary level of fit and finish can be seen in all areas of the Suncruiser. You can see it in the lining of our exterior compartments and in the rounded edges on the front hood (to help prevent injuries). Our fit and finish also includes things you can't see. For instance, we cut each side entrance door from the very sidewall to which it will be installed, for an exact fit and color match.

Suncruiser's stunning good looks are due, in part, to the new front end design with its contemporary grill and windshield.

The standard driver's door includes a convenient entrance assist handle and step, allowing easy access to the driver's seat.

Suncruiser's handy exterior wash station is useful for fast and easy clean-ups, and neatly stows away when not in use.



The Suncruiser is satellite system ready. A dash mounted indicator light reminds the driver to lower the satellite dish and TV antenna before moving the coach.



Our standard awning rail with an integrated rain gutter does more than simply support the available awning. It also channels water from the roof to the front and rear of the motor home instead of letting it run down the face of the awning.

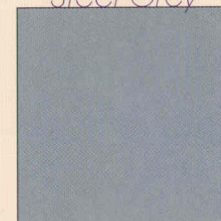


The furnace is neatly housed in the back of the coach. Suncruiser's floor ducted furnace offers more performance and efficiency because its backwall location provides direct air flow into the below-floor plenum.

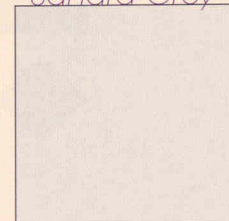
EXTERIOR VALANCE PANELS

Exterior lower valance colors are Steel Grey Metallic, suggested with Castleton and Aegean; or Sahara Grey Metallic, suggested with Ivory Coast. However, you may order either valance color, regardless of your interior choice.

Steel Grey

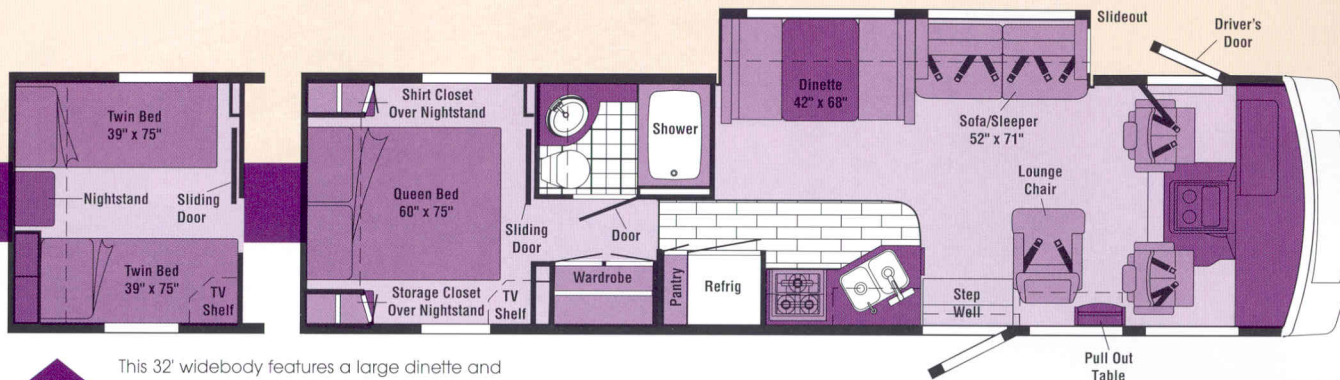


Sahara Grey



2000

Suncruiser Floorplans

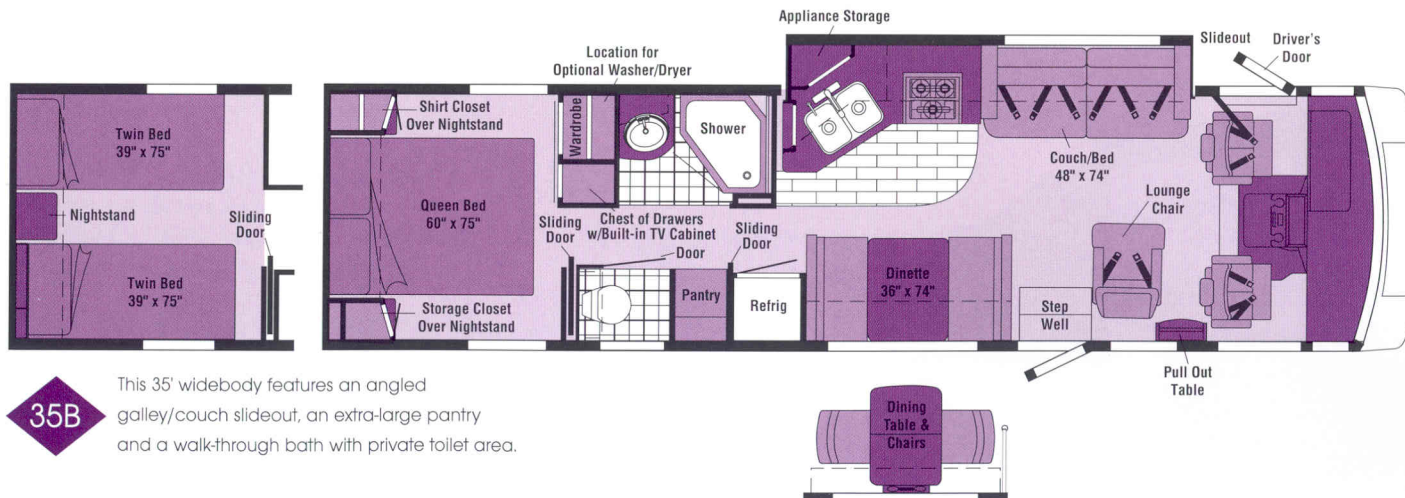


32V

This 32' widebody features a large dinette and sofa/sleeper slideout which extends a full 30" resulting in a very roomy living area.

-  Standard Vinyl Flooring
-  Standard Vinyl Plank Flooring
-  Seatbelts

Note: Dimensions shown are for sleeping space only and dashed lines denote overhead storage areas.



35B

This 35' widebody features an angled galley/couch slideout, an extra-large pantry and a walk-through bath with private toilet area.

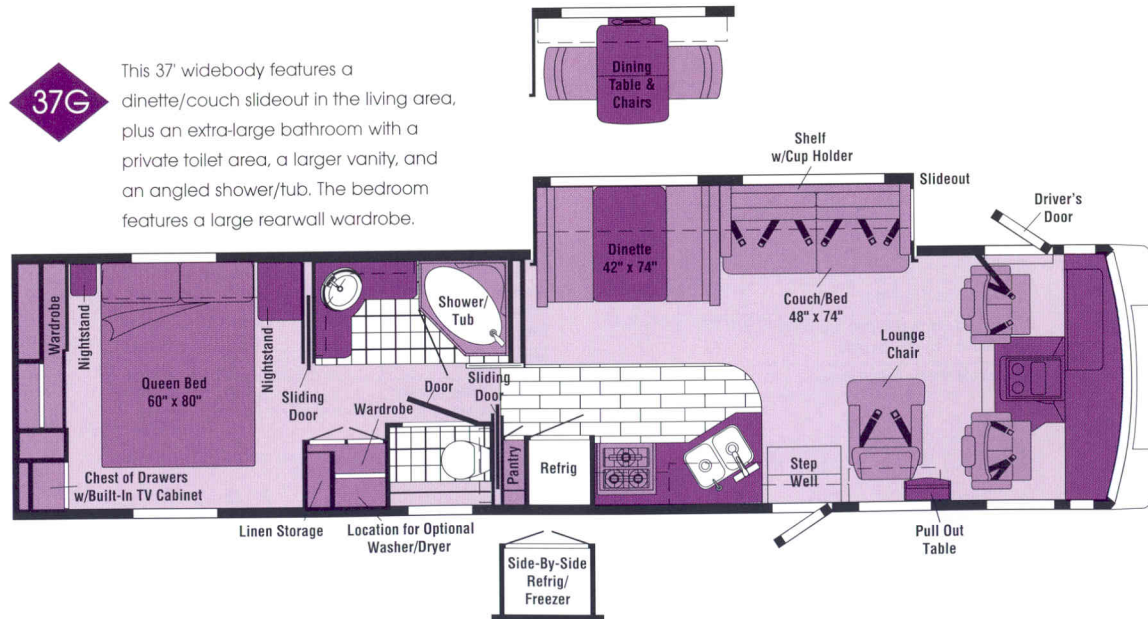


35U

This 35' widebody features a slideout in the living area, and a slideout in the bedroom. The bedroom offers increased floorspace, along with an extra-large wardrobe and a large vanity/desk with folding chair.

37G

This 37' widebody features a dinette/couch slideout in the living area, plus an extra-large bathroom with a private toilet area, a larger vanity, and an angled shower/tub. The bedroom features a large rearwall wardrobe.



2000 Suncruiser Specifications

	32V	35B	35U	37G
Length	32'11"	34'11"	34'11"	37'5"
Exterior Width Δ	8'5.5"	8'5.5"	8'5.5"	8'5.5"
Interior Height	6'8"	6'8"	6'8"	6'8"
Interior Width	8'0.5"	8'0.5"	8'0.5"	8'0.5"
Fuel Capacity - Workhorse/Ford	75/75 gal.	NA/75 gal.	NA/75 gal.	NA/75 gal.
Fresh Water Capacity w/Heater - Workhorse/Ford	66/66 gal.	NA/86 gal.	NA/86 gal.	NA/86 gal.
Holding Tank Capacity - Black/Gray	40/33 gal.	60/54 gal.	40/54 gal.	60/55 gal.
LP Capacity \diamond	28 gal.	28 gal.	28 gal.	28 gal.
Wheelbase - Workhorse/Ford	200"/208"	NA/228"	NA/228"	NA/248"
Exterior Height - Workhorse*/Ford*	11'6"/11'7"	NA/11'9"	NA/11'8"	NA/11'9"
Exterior Storage	76.8 cu. ft.	73.7 cu. ft.	88.6 cu. ft.	97.2 cu. ft.
GVWR - Workhorse/Ford	18,000/20,500 lbs.	NA/20,500 lbs.	NA/20,500 lbs.	NA/20,500 lbs.

AUTOMOTIVE

	32V	35B	35U	37G
Chassis - Workhorse 7.4L Vortec V-8, 124-Amp. Alternator, Anti-Lock Brake System	S			
Chassis - Ford 6.8L Triton V-10, 130-Amp. Alternator	O	S	S	S
Front Shocks/Steering Stabilizer Package* Workhorse Only	O			
Tires (Radial) w/Spare	S	S	S	S

DRIVER CONVENIENCES

	32V	35B	35U	37G
3-Point Retracting Seat Belts w/4-Position Adjustable D-Loop (Drv./Frt. Pass.) Seats w/Reclining High-Back Design, Hinged Armrests, Swivel/Slide Pedestal, Lap Belts in Selected Areas	S	S	S	S
6-Way Driver Seat	O	O	O	O
12-V Electrical Supply/Auxiliary	S	S	S	S
Battery Charge Control Dual, Auto.	S	S	S	S
Battery Disconnect (Auxiliary)	S	S	S	S
Carpeted Floor Mats	S	S	S	S
Convenience Tray	S	S	S	S
Cruise Control, Start Circuit Auxiliary	S	S	S	S
Curtain w/Track Front Wrap-Around	S	S	S	S
Daytime Running Lamps (Ford)	S	S	S	S
Defroster Fans Aux. 2-Speed	O	O	O	O
Driver's Door w/Exterior Step	S	S	S	S
Heating/Air Conditioning Automotive Blend Air System	S	S	S	S

	32V	35B	35U	37G
Hood Release	S	S	S	S
Map Light, Sunvisors	S	S	S	S
Mirrors (Rear View) Exterior, Low Mounted, Includes Convex Element	S	S	S	S
Mirrors (Rear View) Exterior, Low Mounted, Electric w/Remote & Defrost	O	O	O	O
Rear View Monitor System Cable Ready	S	S	S	S
Rear View Monitor System (Sony*) Video/One-Way Audio	O	O	O	O
Service Light Driver's Side, Exterior	S	S	S	S
Steering Power Assisted w/Tilt Wheel	S	S	S	S
Storage Cabinets (Front & Side Overheads)	S	S	S	S
Ultraleather HP* Seats Flexsteel® Driver & Passenger, w/Ultraleather Furniture	O	O	O	O
Wall Shelf (Passenger Side) w/Beverage Holder, 12-V Receptacle & Storage	S	S	S	S
Window Shades (2) Roller, Light Filtering	S	S	S	S
Window (Driver) Roll Down	S	S	S	S
Window (Passenger) Sliding, w/Screens, Dual Glazed, Thermo-Insulated	S	S	S	S
Windshield Wipers (Intermittent)	S	S	S	S

ENTERTAINMENT

	32V	35B	35U	37G
Antenna (Radio) Roof-Mounted, Flexible Rubber	S	S	S	S
C.B. Prep Kit Antenna, Coax Wiring, 12-V Power Connection	O	O	O	O
Compact Multi-Disc Changer (Sony)	O	O	O	O

	32V	35B	35U	37G
Entertainment Center (Patio)* DC Receptacle, 110-V Outlet, TV Jack, Radio Antenna, Exterior Antenna Jack, AM/FM Radio w/Cassette or CD Player, Speakers (2), Table, Locking Door	O	O	O	O
Satellite System Pre-Wiring Roof	S	S	S	S
Satellite System Digital ∞ w/Elevation Sensor	O	O	O	O
Sound System Deluxe, Amplifier, 6 Speakers	O	O	O	O
Stereo Power Switch Main or Aux. Battery	S	S	S	S
Stereo (Cab) (Sony) AM/FM Cassette w/Speakers (4)	S	S	S	S
Telephone Input & Interior Jack(s)	S	S	S	S
TV (13" Color) DC w/Remote Located in Bedroom	S	S	S	S
TV Front (25" Color) w/Remote	S	S	S	S
TV Enhancement Package Antenna Reminder Light, Antenna (Amplified), DC Receptacles (2), Interior Jacks (2), Coax Wiring, Cable Input	S	S	S	S
VCR w/Remote	O	O	O	O
Video Selection System	S	S	S	S

SLIDEOUT

	32V	35B	35U	37G
Slideout Room (Driver's Side)* Switch Located on Instrument Panel, Cover, Compartments Slideout w/Room, Mirror, Wainscoting	S	S	S	S
Slideout Room (Rear)*		S		

INTERIOR

	32V	35B	35U	37G
Accessory Package Rechargeable Flashlight & Vacuum Cleaner	O	O	O	O
Cabinets Wood Stile & Rail w/Raised Panel Doors	S	S	S	S
Carpeting w/Pad Stain Resistant	S	S	S	S
Ceiling Lights, Courtesy Light	S	S	S	S
Ceiling Lights Fluorescent, Recessed, Galley, Lounge	O	O	O	O
Ceiling Vent Non-Powered, Galley	S	S	S	S
Ceiling Vent Powered, Bathroom	S	S	S	S
Ceiling Vent Powered Ventilator Fan, Galley	O	O	O	O
Clock Decorative Style	S	S	S	S
Color Themes (Interior) Choice of Ivory Coast (Beige), Castleton (Green), Aegean (Blue)	S	S	S	S
Lamp(s) Decorative Style, in Lounge		S	S	S
Picture Framed		S		S
Throw Pillows (2) Sofa	S	S	S	S
Ultraleather HP Flexsteel Furniture Sofa Lounge Chair	O	O	O	O
Wardrobe Mirrored Door(s), Carpeted Floor, Drawers (32V), Light, Clothes Rod, Shelf* (NA on 32V, 35U)	S	S	S	S
Washer/Dryer		O		O
Washer/Dryer Prep Kit Drainage, Water & Electrical Connections		O		O
Windows Tinted	S	S	S	S
Windows Dual Glazed, Thermo-Insulated	S	S	S	S
Window Coverings Day/Night Pleated Shades	S	S	S	S

GALLEY

	32V	35B	35U	37G
Coffee Maker	S	S	S	S
Countertop Solid Surface	S	S	S	S
Flip-Up Countertop Extension	S		S	S
Flooring (Woodgrain Vinyl Plank)	S	S	S	S
Fluorescent Light under Cabinet	S	S	S	S
Microwave/Convection Oven w/Range Fan Residential 30", Touch Control	O	O	O	O
Microwave Oven w/Range Fan Residential 30", Touch Control	S	S	S	S
Mirror Wall	S	S	S	S

	32V	35B	35U	37G
Pantry* Slideout w/Adjustable Shelves, Locking	S	S	S	S
Partition Glass, Countertop		S		
Range Top (Maytag®) 3-Sealed Burners w/Storage Drawers below	O	O	O	O
Range w/Large Glass-Doored Oven (Maytag) Range Cover, 3-Sealed Burners, 1 High Output Burner	S	S	S	S
Refrig./Freezer Large, Double-Door	S	S	S	S
Refrig./Freezer Large, Double-Door w/Icemaker	O	O	O	O
Refrig./Freezer* Side-by-Side w/Icemaker			O	O
Sink (Double) Stainless Steel w/Large/Small Compartment, Countertop Covers, Single Control Faucet w/Pull-Out Sprayer	S	S	S	S
Spice Rack	S	S	S	S
Storage Drawers below Dinette Seats	S	S	S	S
Table & Chairs (4)*		O	O	O
Wall Border Decorative	S	S	S	S
Wastepaper Basket	S	S	S	S
Water Purification System	S	S	S	S

BEDROOM

	32V	35B	35U	37G
Alarm Clock	S	S	S	S
Bedsprad, Pillows, Throw Pillow	S	S	S	S
Headboard Padded Fabric	S	S		
Lamp(s) Decorative, Wall-Mounted	S	S	S	S
Mattress(es) (Serta®) w/Non-Slip Mat, Access to Storage below, Gas Springs	S	S	S	S
Mirror Backwall w/Decorative Shelf	S	S		
Vanity/Desk Area w/Folding Chair			S	
Wainscoting w/Chair Rail	S	S	S	S

BATHROOM

	32V	35B	35U	37G
Fixed Shower Head w/Single Control	S	S	S	
Fixed Shower Head w/Dual Control				S
Flooring (Vinyl)	S	S	S	S
Hair Dryer Wall Mounted	S	S	S	S
Lavatory Cabinet	S	S	S	S
Magazine Rack	S		S	S
Makeup Lights (3 Bulb) (2 Sets 35B)	S	S		S
Makeup Lights (4 Bulb)			S	
Medicine Cabinet(s)	S	S	S	S
Mirror(s) Wall-Mounted	S		S	S

	32V	35B	35U	37G
Robe Hook		S		
Shower Door Textured Glass		S		S
Shower Door Folding, Panel	S		S	
Sink Oval, w/Ledge Back	S	S	S	S
Skylight & Shower Light	S	S	S	S
Tissue Holder	S	S	S	S
Toilet w/Foot Pedal Porcelain	S	S	S	S
Towel Bars	S	S	S	S
Towel Ring(s)	S	S		S

EXTERIOR

	32V	35B	35U	37G
Awning Rail	S	S	S	S
Awning* Patio	O	O	O	O
Bumpers Front: Steel Reinforced, Rear: Formed Aluminum w/End Caps	S	S	S	S
Entrance Door w/Screen Door Latch & Deadbolt Locks, Electric Steps	S	S	S	S
Fresh Water Tank Drain *	S	S	S	S
Graphics Package Choice of Steel Grey Metallic (Rec. w/Castleton & Aegean) or Sahara Grey Metallic (Rec. w/Ivory Coast)	S	S	S	S
Gravity Water Fill Door Lockable	S	S	S	S
Holding Tanks Heated Compartment	S	S	S	S
Ladder/Mud Flaps Rear	S	S	S	S
Outlet 110-V, Curbside	S	S	S	S
Porch Light w/Interior Switch	S	S	S	S
Service Center (Electrical) Cable TV Input, Power Cord, Telephone Input	S	S	S	S
Service Center (Water/Drainage) City Water Hook-Up, Drainage Valves, Exterior Wash Station w/Pump Switch, Sewer Hose	S	S	S	S
Storage Compartments Heated Rear Storage Compartment, Locks, Gas Struts, Single Paddle Latch, Lights, Trunk Liner	S	S	S	S
Trailer Towing Package w/Receiver & Hitch Pin	S	S	S	S
Trailer Wiring Fixed Mount Female Connector & Male Plug Connector	S	S	S	S
Wheel Covers	S	S	S	S
Wheel Liners Stainless Steel	O	O	O	O

SYSTEMS

	32V	35B	35U	37G
30-Amp. Power Cord	S	S	S	S
50-Amp. Power Cord Superflex	O	O	O	O

	32V	35B	35U	37G
Automatic Changeover Switch Shoreline/Generator	S	S	S	S
Batteries (2) Deep Cycle RV	S	S	S	S
Battery Charger (Solar) Wiring Prep	S	S	S	S
Battery Charger (Solar) 10-Watt	O	O	O	O
Electrical Distribution System AC Breaker Panel, DC Breaker Panel, 45-Amp. Converter/Charger	S	S	S	S
Furnace 35,000-BTU	S			
Furnace 40,000-BTU		S	S	S
Generator Prep Kit Fuel Line, 12-V Wiring	S	S	S	S
Generator* (Onan® Emerald) 5,000-Watt, Gas	S	S	S	S
Generator* (Onan Emerald) 6,500-Watt, Gas	O	O	O	O
Holding Tank Flushing System Black Tank	S	S	S	S
Home Comfort Plus Package Heat Pump (Central Air), Auxiliary Automotive Heater, Insulated Power Ventilator Fans - Bathroom & Galley	O	O	O	O
HWH Hydraulic Leveling Jacks Front & Rear	S	S	S	S
Inverter* for TV/VCR, 130-Watt	O	O	O	O
LP Tank Permanent Mount w/Gauge	S	S	S	S
Monitor Panel Water, Holding & LP Tank Levels, Battery Digital Voltmeter, Water Heater Switch Lights, Water Pump Switch, Generator Start/Stop Switch, Generator Hourmeter Gauge, Located in Galley	S	S	S	S
OnePlace Systems Center Includes Monitor Panel, Thermostat, PowerLine Panel, Solar Indicator Charge Light	S	S	S	S
PowerLine Energy Management System	S	S	S	S
TrueAir Central Air Conditioning Remote Cooling Unit, Ceiling Distribution, Wall Thermostat	S	S	S	S
Water Heater 6-Gal., Electronic Ignition	S	S	S	S
Water Heater 10-Gal., Gas/Elec. w/Motoraid	O	O	O	O
Water Heater Winterization By-Pass Valve (Manual)	S	S	S	S
Water Pump (Demand)	S	S	S	S
Water System Winterizing Valve	S	S	S	S

SAFETY

	32V	35B	35U	37G
3-Point Retracting Seat Belts (Drv./Frt. Pass.)	S	S	S	S
Assist Bar Interior	S	S	S	S
Assist Handle* Exterior, Acrylic w/Logo	S	S	S	S
Carbon Monoxide Detector/Alarm	S	S	S	S
Fire Extinguisher (10-B.C.)	S	S	S	S
Ground Fault Interrupter	S	S	S	S

	32V	35B	35U	37G
High Mount Brake Light	S	S	S	S
Lap Belts in Selected Areas	S	S	S	S
LP Leak Detector/Alarm	S	S	S	S
Smoke Detector/Alarm	S	S	S	S
Windshield Laminated Safety Glass Mounted in Steel, Window Escape	S	S	S	S

WARRANTY

	32V	35B	35U	37G
12-Month/15,000-Mile Basic Warranty, 36-Month/36,000-Mile Warranty on Structure** , 10 Year Limited Parts & Labor Warranty on Roof	S	S	S	S

△ The Suncruiser floorplans feature a widebody design — over 96". In making your purchase decision, you should be aware that some states restrict access on some or all state roads to 96" in body width. Before making your purchase decision, you should confirm the road usage laws in the states of interest to you.

NA Not Available

◇ Capacities shown are tank manufacturer's listed water capacity (W.C.). Actual filled LP capacity is 80% of listing due to overfilling prevention device required on tank.

- The height of each model is based on the curb weight of a typically equipped unit on the standard chassis. The actual height of your vehicle may vary by as much as 2" depending on chassis or equipment variations.

S Standard

O Optional

* Not all items available in combination. See dealer for details.

∞ TV satellite system options do not include programming activation or receiver. Quality reception is only available in the lower 48 States.

** See your dealer for complete warranty documentation information.

Winnebago Industries' continuing program of product improvement makes specifications, equipment, model availability and prices subject to change without notice. Comparisons to other motor homes are based on the most recent information available.

Suncruiser

A Few More Details.



WIT Club



Membership in the Winnebago Itasca Travelers (WIT) Club is a great way to meet people and get even more enjoyment from your motor home. As an owner of a Winnebago Industries RV, you can join the Club and take advantage of some great services — like professional travel planning and mail forwarding — and participate in some great rallies and caravans. Call 1-800-643-4892 ext. 1 for more information.

TripSaver

In a recent RVDA survey, Winnebago Industries was voted number one in the industry for service, parts, and warranty support by dealers across the country. And who would know better than the people who service motor homes? We believe a large part of our service success is due to our commitment to getting you back on the road as soon as possible after experiencing a mechanical emergency. That's why we created TripSaver. This industry-leading program guarantees that qualifying, in-stock emergency warranty repair parts will be shipped directly from the factory within 24 hours. Furthermore, a Winnebago Industries built part or component that is not in stock will be specially manufactured and shipped air freight.



TRIPSaver
Emergency-Shipped Parts

Warranty Protection

All new Itasca motor homes include a 12-month/15,000-mile basic protection plan, 36-month/36,000-mile warranty protection on lamination and slideroom construction and assemblies, and a standard 10-year limited parts and labor warranty on the roof. As if those aren't enough, we also stand behind most major appliances and equipment we install (a rarity in the industry) so you can count on the convenience of one-stop service for warranty repairs. It all adds up to some of the most comprehensive warranty programs in the industry backed by the most recognized motor home manufacturer in the world.



Visit us at
www.winnebagoind.com

Read this guide.

To learn more about what separates our motor

homes from others, ask for this free guide

next time you visit your Winnebago

Industries dealer. It explains our

superior manufacturing

process. Use it to learn

more about important safety and

quality considerations as you shop for the

motor home that's best for you.



For Sales and Service Information Contact:



©1999 Winnebago Industries, Inc.

Printed in USA

Seat belts are your most important hookup. Always buckle up.