

SUNFLYER



2 0 0 0



Sunflyer

Itasca's luxury



Inside, cavernous storage in overhead cabinets, premium floor coverings, upgraded fabrics, handcrafted woodwork, and dual slideroom designs work together to create a motor home that offers the most home-like atmosphere possible. The lounge area is maximized thanks to the full 30" extension of the dinette/couch slideroom (35U and 36W).

Introducing the 2000 Itasca® Sunflyer® — Winnebago Industries' highly refined line of luxury gas-powered motor homes. Sunflyer's spacious floorplans boast the high-line features Itasca motor homes are known for, the strength of design that Winnebago Industries built its reputation on, and a host of new advantages. If you've been looking for the ideal gas-powered motor home, you may have just found your coach. The new Itasca Sunflyer.



The Sunflyer offers many premium items as standard features, including comfortable Flexsteel® furniture, a front 19" stereo TV with stereo VCR and deluxe sound system, solid surface countertops in the galley and bath, fluorescent ceiling lights in the lounge, dinette and galley areas, and directional reading lights located throughout the coach. Additional available features include stain and blemish resistant, soft-touch Ultraleather HP™ lounge area furniture, driver and passenger seats, and a footrest for the passenger seat.

The impressive galley includes solid surface countertops, new single lever faucet with pull-out sprayer, Maytag® sealed burner range top, residential microwave/convection oven, a double-door refrigerator with wood-grain raised-panel inserts and contemporary vinyl tile flooring.



class gas-powered motor home.



34Y TARRAGON

For all-season comfort, the Sunflyer incorporates standard dual-pane windows, and Winnebago Industries' revolutionary **TRUEAIR** residential central air conditioning system — which places the air conditioning unit in the basement, not on the roof. TrueAir not only streamlines the coach, it also offers a convenient location for service and enhanced air quality by using residential-style filters instead of thin foam pads.



34Y

New features adding to the bathroom's already impressive list of standard amenities include a textured glass shower door, convenient single control shower faucet, and a residential-height porcelain toilet.

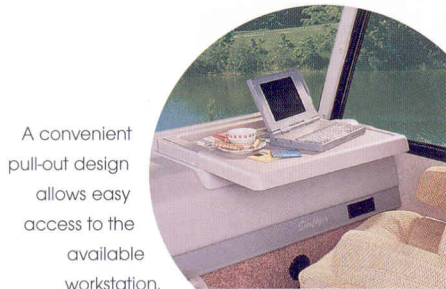


35U BLUSH

A desk/vanity area and expansive wardrobe storage space are highlights of the large, slideout bedrooms found on all Sunflyer models. Both the 35U and 36W feature queen size beds which accept standard bedding. Additional features include a striking chair rail molding, built-in 13" TV, built-in clock/alarm, telephone jack and available rear stereo with CD player.

SUNFLYER DECOR OPTIONS

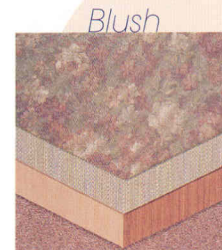
To assure their strength and durability, fabrics selected for use in the Sunflyer must pass a series of rigorous tests. Just one example is the "double rub" test, where a machine mechanically simulates a person getting in and out of a seat up to 30,000 times. (This equates to nearly four times a day for over 20 years!)



A convenient pull-out design allows easy access to the available workstation.



Large 4" door and drawer handles are user-friendly additions to the coach. The drawer guides include a positive locking feature to keep them secure while traveling.



with Washed Maple or Salem Cherry



with Washed Maple or Salem Cherry



with Washed Maple or Salem Cherry

We take great pride in our commitment to building superior motor homes. And it all starts with our solid **SUPER STRUCTURE** construction. Outriggers and the support substructure are mounted to the chassis using an advanced laser alignment system to ensure a square foundation upon which to build. Interlocking sidewall and roof joints provide superior strength and excellent load bearing capabilities. The result is one of the strongest body constructions in the industry.



New exterior design features include a large acrylic assist handle located next to the entrance door and improved driver and passenger mirrors with special convex mirrors mounted on top for increased viewing area. And our single-piece fiberglass roof is so strong, it's backed by a 10-year limited parts and labor warranty.

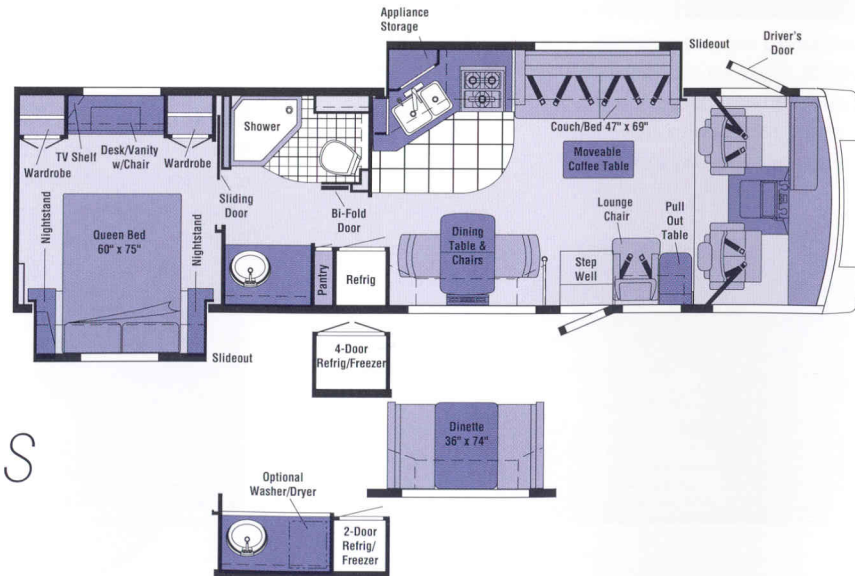
Our standard awning rail with an integrated rain gutter channels water from the roof to the front and rear of the coach so that it doesn't run down the face of the awning.



Sunflyer's handy exterior wash station is useful for fast and easy clean-ups, and neatly stows away when not in use.



Sunflyer's **STORE MORE** Hydraulic Slideout System features roomy exterior storage compartments that extend with the slideroom. Exterior StoreMore storage compartments are lighted to make loading and unloading more convenient.



34Y

This new widebody floorplan features an angled galley/couch slideout, bedroom area slideout, lounge chair and table, and standard dining table and chairs.

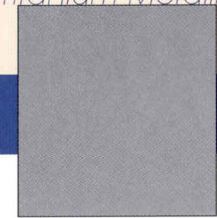
2000

Sunflyer Floorplans

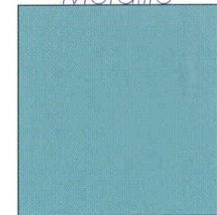
SUNFLYER VALANCE COLORS

Exterior lower valance colors are Medium Titanium Metallic, suggested with Blush and Antique Pearl; and Jadestone Metallic, suggested with Tarragon. However, you may order either valance color, regardless of your interior choice.

Medium
Titanium Metallic



Jadestone
Metallic

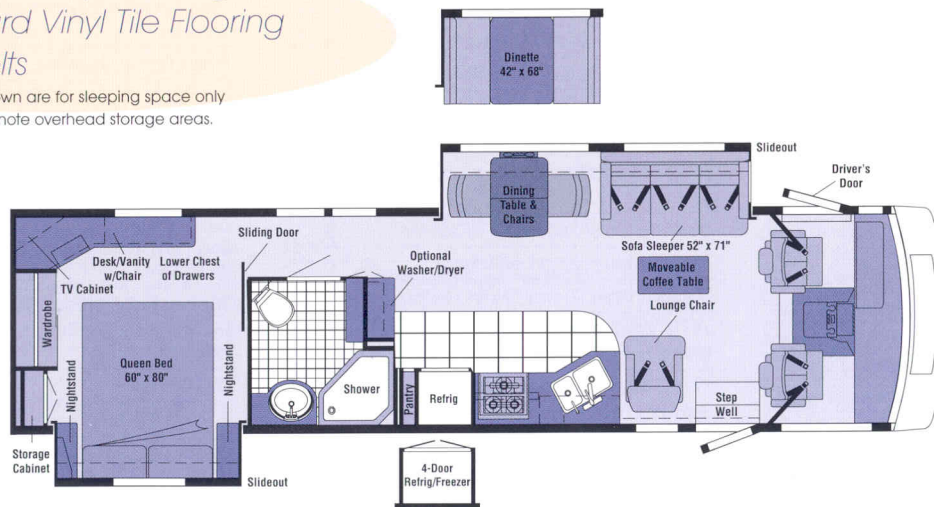


35U

This 35' widebody includes a dinette/couch slideout with coffee table in the living area. The bedroom slideout greatly increases floorspace allowing for a desk/vanity and two large wardrobes.

-  Standard Vinyl Flooring
-  Standard Vinyl Tile Flooring
-  Seatbelts

Note: Dimensions shown are for sleeping space only and dashed lines denote overhead storage areas.



36W

This all-new 36' widebody features a dining table/sofa sleeper slideout in the living area, along with a large bathroom with an extra vanity and an angled shower. The side-aisle design provides increased privacy in the bath/bedroom area. The bedroom slideout allows for a desk/vanity with a chair and an incredible amount of storage space including a chest of drawers and a large wardrobe.

2000 Sunflyer Specifications

	34Y	35U	36W
Length	35'1.6"	35'8.7"	36'6.5"
Exterior Width Δ	8'5.5"	8'5.5"	8'5.5"
Interior Height	6'8"	6'8"	6'8"
Interior Width	8'0.5"	8'0.5"	8'0.5"
Fuel Capacity	75 gal.	75 gal.	75 gal.
Fresh Water Capacity w/Heater	86 gal.	86 gal.	86 gal.
Holding Tank Capacity - Black/Gray	58/67 gal.	40/54 gal.	45/67 gal.
LP Capacity \diamond	28 gal.	28 gal.	28 gal.
Wheelbase	216"	228"	228"
Exterior Height*	11'8"	11'8"	11'8"
Exterior Storage	69 cu.ft.	72.4 cu.ft.	70.48 cu.ft.
GVWR	20,500 lbs.	20,500 lbs.	20,500 lbs.

AUTOMOTIVE

	34Y	35U	36W
Chassis - Ford 6.8L V-10 @ 275-HP, 130-Amp. Alternator, Anti-Lock Brake System	S	S	S
Tires (Radial) w/Spare	S	S	S

DRIVER CONVENIENCES

	34Y	35U	36W
3-Point Retracting Seat Belts (Drv./Frt. Pass.) w/Adjustable 4-Position D-Loop, Seats w/Reclining High-Back Design, Hinged Armrests, Lumbar Support (Driver's Seat), Swivel/Slide Pedestal, Lap Belts in Selected Areas	S	S	S
12-V Electrical Supply/Lighter	S	S	S
Auxiliary 12-V Receptacle	S	S	S
Battery Charge Control Dual, Automatic	S	S	S
Battery Charger (Solar) Wiring Prep	S	S	S
Battery Charger (Solar) 10-Watt	O	O	O
Battery Disconnect System Coach Batteries	S	S	S
Convenience Tray	S	S	S
Cruise Control, Steering Power Assisted w/Tilt Wheel	S	S	S
Defroster Fans Auxiliary 2-Speed	O	O	O
Driver's Door w/Roll-Down Window	S	S	S
Driver's Seat Six-Way Power Assist	O	O	O
Fog Lamps, Hood Release Exterior Key Locks	S	S	S
Heating/Air Conditioning Automotive Blend Air System	S	S	S

	34Y	35U	36W
Map Light, Pleated Shade Front Wrap-Around w/Wands	S	S	S
Mirrors (Rear View) Ext., Low Mounted, Electric w/Remote & Defrost	S	S	S
Passenger Seat w/Footrest	O	O	O
Rear View Monitor System Cable Ready	S	S	S
Rear View Monitor System (Sony®) Video/One-Way Audio	O	O	O
Rubber Floor Mats	S	S	S
Service Light Driver's Side, Exterior	S	S	S
Start Circuit Auxiliary	S	S	S
Storage Cabinet (Front & Side Overheads)	S	S	S
Sunvisors, Window Shades (2) Roller, Light Filtering	S	S	S
Ultraleather HP™ Flexsteel® Seats Driver & Passenger	O	O	O
Wall Shelf Passenger, Beverage Holder	S	S	S
Window Passenger Slider w/Screen	S	S	S
Windshield Wipers (Intermittent)	S	S	S
Work Station Pull-Out, Dash Mounted, Passenger Side, 110-V Outlet, Telephone Jack	O	O	O

ENTERTAINMENT

	34Y	35U	36W
Antenna (Radio) Roof-Mounted, Flexible Rubber	S	S	S
C.B. Prep Kit Ant., Coax Wiring, 12-V Power Connection	O	O	O

	34Y	35U	36W
CD Changer Multi-Disc w/Remote	O	O	O
Entertainment Center (Patio) DC Receptacle, 110-V Outlet, TV Jack, Radio Antenna, AM/FM Radio w/Cassette or CD Player, Speakers (2), Table (NA 36W), Locking Door	O	O	O
Satellite System Pre-Wiring Roof	S	S	S
Satellite System Digital \Rightarrow w/Elevation Sensor	O	O	O
Sound System Deluxe, Amplifier, 6 Speakers	S	S	S
Stereo (Cab) AM/FM/Cassette Deck (Sony)	S	S	S
Stereo w/CD Player (Cab)* AM/FM (Sony)	O	O	O
Stereo Power Switch For Main or Auxiliary Battery Use	S	S	S
Stereo System Bedroom* AM/FM/Cassette	O	O	O
Stereo System Bedroom* w/CD Player	O	O	O
Telephone Inputs (2) Front Cab Area/Bedroom	S	S	S
TV (13" Color) w/Remote Located in Bedroom	S	S	
TV (19" Color) Stereo w/Remote Located in Bedroom			S
TV (19" Color) w/Remote* Dinette, Video Selection System	O		
TV, Front (19" Color) Stereo w/Remote Video Selection System	S	S	S
TV Enhancement Package Antenna (Amplified), DC Receptacles (2), Interior Jacks (2), Coax Wiring, Cable Input, Exterior Antenna Jack, Antenna Reminder Light	S	S	S
VCR w/Remote (Stereo)	S	S	S

SLIDEOUT

	34Y	35U	36W
Slideout Room (Driver's Side)* 20" Couch/Galley Extension (34Y), 30" Couch/Dinette Extension (35U, 36W), Exterior Storage Compartments Slideout w/Room	S	S	S
Slideout Room (Pass. Side, Bedroom)* Approx. 24" Extension	S	S	S

INTERIOR

	34Y	35U	36W
Carpeting w/Pad	S	S	S
Ceiling Lights Fluorescent, Recessed, Lounge & Galley	S	S	S
Ceiling Vent Non-Powered, Galley	S	S	S
Ceiling Vent Powered, Bathroom	S	S	
Ceiling Vent Powered Ventilator Fan, Galley	O	O	O
Clock Decorative Style	S	S	S
Coffee Table	S	S	S
Color Themes (Interior) Choice of Blush, Antique Pearl (Neutral), Tarragon (Green) w/Washed Maple or Salem Cherry Woodgrain	S	S	S
Courtesy Lights (2) w/Wall Switches	S	S	S
Lamp Decorative Style, Wall-Mounted in Lounge	S	S	
Picture Framed, Decorative	S		S
Ultraleather HP Flexsteel Furniture Sofa Sofa Sleeper Lounge Chair	O	O	O
Wardrobe Carpeted Floor, Clothes Rod, Sliding Mirrored Door (35U, 36W), Wood Door (34Y), Five Drawers (34Y), Light, Shelf (36W)	S	S	S
Windows Tinted (Coach), Windows Dual Glazed, Thermo-Insulated (Tip-Outs in Bedroom)	S	S	S
Washer/Dryer*	O		O

GALLEY

	34Y	35U	36W
Appliance Storage Cabinet	S		
Coffee Maker Countertop Model	O	O	O
Counter Extension Flip-Up		S	
Decorative Dinette Light	S	S	S
Flooring (Vinyl Tile)	S	S	S
Faucet Single Control, w/Pull-Out Sprayer	S	S	S

	34Y	35U	36W
Fluorescent Light Under Cabinet	S	S	S
Halogen Light			S
Microwave/Convection Oven w/Range Fan Residential 30", Touch Control	S	S	S
Mirror Wall, Wall Border Decorative (NA 34Y)	S	S	S
Pantry* Slideout w/Adjustable Shelves, Locking	S	S	S
Partition Glass	S		S
Range Top w/Storage below, Range Cover, 3 Sealed Burners (Maytag®)	S	S	S
Range w/Large Glass-Doored Oven w/Drawer below, Range Cover, 3 Sealed Burners (Maytag)	O	O	O
Refrig./Freezer Large, Dbl.-Door	S	S	S
Refrig./Freezer Large, Dbl.-Door w/Icemaker	O	O	O
Refrig./Freezer* Four-Door w/Icemaker	O	O	O
Sink (Double) Stainless Steel, Covers, Tip-Out Utility Tray (34Y)	S	S	S
Solid Surface Countertop	S	S	S
Spice Rack, Wastepaper Basket	S	S	S
Storage Drawers Below Dinette Seats	O	S	O
Table & Chairs Flexsteel (2) Folding (2)	S	O	S
Water Purification System (Everpure)	S	S	S

BEDROOM

	34Y	35U	36W
Bedsread, Pillow Shams, Throw Pillow	S	S	S
Clock Alarm	S	S	S
Hamper		S	S
Mattress (Serta®) Innerspring, w/Non-Slip Mat, Access to Storage below, Gas Springs	S	S	S
Mirror on Backwall	S	S	
Vanity/Desk w/Folding Chair	S	S	S
Wainscoting w/Chair Rail	S	S	S
Wall Lamp(s) Decorative Style	S	S	S

BATHROOM

	34Y	35U	36W
Ceiling Vent Fan, Lift & Remote Switch			S
Clothes Rod Removable		S	
Flooring (Vinyl)	S	S	S
Lavatory Cabinet, Makeup Lights	S	S	S
Magazine Rack	S	S	
Medicine Cabinet(s) Wood	S	S	S
Robe Hook			S

	34Y	35U	36W
Shower Single Control Shower Head	S	S	S
Shower Door(s) Textured Glass	S	S	S
Sink Oval, Large w/Ledge Back	S	S	S
Skylight & Shower Light	S	S	S
Toilet w/Foot Pedal Porcelain, Tissue Holder	S	S	S
Towel Bar(s)		S	
Towel Ring(s)	S		S

EXTERIOR

	34Y	35U	36W
Awning Rail w/Gutter (Both Sides)	S	S	S
Awning* Patio w/Metal Wrap	O	O	O
Bumpers Front: Molded into Front Cap, Rear: Steel Reinforced Styled Fascia	S	S	S
Entrance Door w/Screen Door Latch & Deadbolt Locks, Electric Steps w/Door Activated Switch	S	S	S
Graphics Package Choice of Medium Titanium Metallic (Recommended w/Blush & Antique Pearl) or Jadestone Metallic (Recommended w/Tarragon)	S	S	S
High-Gloss Exterior Fiberglass Skin Sidewalls	S	S	S
Holding Tanks Heated Compartment, Sewer Hose	S	S	S
Ladder, Mud Flaps Rear	S	S	S
Mud Guard Full Width	O	O	O
Outlet 110-V, Curbside, Porch Light w/Interior Switch	S	S	S
Storage Compartments Single Paddle Latch, Locks	S	S	S
Tire Tools Wrench, Leverage Bar	S	S	S
Trailer Towing Package w/Hitch Receiver & Pin, Trailer Wiring Extension	S	S	S
Wash Station Pump Switch, Water Fill Door Lockable	S	S	S
Wheel Liners Stainless Steel	S	S	S

SYSTEMS

	34Y	35U	36W
30-Amp. Power Cord, Batteries (2) Deep Cycle RV	S	S	S
50-Amp. Power Cord*	O	O	O

	34Y	35U	36W
Electrical Distribution System Breaker Panels, Converter/Charger (45-Amp. 34Y, 55-Amp. 35U & 36W)	S	S	S
Furnace Ducted, Low Profile, 40,000-BTU	S	S	S
Generator (Onan®)* 5,000-Watt Gas	S	S	S
Generator (Onan) 7,000-Watt Gas	O	O	O
Generator Prep Kit	S	S	S
Holding Tank Flushing System Black Tank Only	S	S	S
Home Comfort Plus Package Heat Pump Heater - Auxiliary Automotive Roof Vents - Insulated Powered Ventilator Fan (Bath & Galley)	O	O	O
HWH® Hydraulic Leveling Jacks Front & Rear	S	S	S
Inverter 130-Watt for TV/VCR (2 on 36W)	O	O	O
LP Tank Permanent Mount w/Gauge	S	S	S
OnePlace Systems Center Includes Thermostat, PowerLine Energy Management System Panel, Solar Indicator Charge Light, Monitor Panel — Water, Holding & LP Tank Levels, Water Heater Ignition Switch w/Pilot Indicator Light & On Light, Water Pump Switch, Generator Hourmeter, Generator Start/Stop Switch, Battery Digital Voltmeter	S	S	S
Service Center Provides Access to Cable TV & Telephone Inputs, City Water Hook-Up/ Tank Diverter Fill, Exterior Wash Station w/ Pump Switch, Sewer Hose, Drainage Valves, Power Cord	S	S	S
Shoreline/Generator Automatic Changeover Switch	S	S	S
TrueAir Central Air Conditioning Ceiling Distribution, Wall Thermostat	S	S	S
Water Heater 6-gal., Electronic Ignition	S	S	S
Water Heater 10-gal., Electronic Ignition 120V AC/LP Gas w/Motoraid	O	O	O
Water Heater Winterization By-Pass Valve	S	S	S
Water Pump (Demand) Accumulator Tank	S	S	S
Water System Winterizing System Auto.	O	O	O
Water System Winterizing Valve	S	S	S
Water Tank Drain 1*	S	S	S

SAFETY

	34Y	35U	36W
3-Point Retracting Seat Belts (Drv./Frt. Pass.) w/4-Position Adjustable D-Loop	S	S	S

	34Y	35U	36W
Assist Handle* Exterior, Acrylic w/Logo	S	S	S
Carbon Monoxide Detector/Alarm, LP Leak Detector/Alarm, Smoke Detector/Alarm	S	S	S
Daytime Running Lamps	S	S	S
Fire Extinguisher (10-B.C.)	S	S	S
Ground Fault Interrupter	S	S	S
High Mount Brake Light	S	S	S
Lap Belts in Selected Areas	S	S	S
Windshield Laminated Safety Glass	S	S	S
Window Escape	S	S	S

WARRANTY

	34Y	35U	36W
12-Month/15,000-Mile Basic Warranty, 36-Month/36,000-Mile Warranty on Structure**, 10-Year Limited Parts & Labor Warranty on Roof	S	S	S

- △ The Sunflyer features a widebody design — over 96". In making your purchase decision, you should be aware that some states restrict access on some or all state roads to 96" in body width. Before making your purchase decision, you should confirm the road usage laws in the states of interest to you.
- ◇ Capacities shown are tank manufacturer's listed water capacity (W.C.). Actual filled LP capacity is 80% of listing due to overfilling prevention device on tank.
- The height of each model is based on the curb weight of a typically equipped unit on the standard chassis. The actual height of your vehicle may vary by as much as 2" depending on chassis or equipment variations.
- S Standard
O Optional
NA Not Available
∞ TV satellite system options do not include programming activation or receiver. Quality reception is only available in the lower 48 States.
* Not all items available in combination. See dealer for details.
** See your dealer for complete warranty documentation information.

Winnebago Industries' continuing program of product improvement makes specifications, equipment, model availability and prices subject to change without notice. Comparisons to other motor homes are based on the most recent information available.

Sunflyer

A Few More Details



WIT Club



Membership in the Winnebago Itasca Travelers (WIT) Club is a great way to meet people and get even more enjoyment from your motor home. As an owner of a Winnebago Industries RV, you can join the Club and take advantage of some great services — like professional travel planning and mail forwarding — and participate in some great rallies and caravans. Call 1-800-643-4892 ext. 1 for more information.

TripSaver

In a recent RVDA survey, Winnebago Industries was voted number one in the industry for service, parts, and warranty support by dealers across the country. And who would know better than the people who service motor homes? We believe a large part of our service success is due to our commitment to getting you back on the road as soon as possible after experiencing a mechanical emergency. That's why we created TripSaver. This industry-leading program guarantees that qualifying, in-stock emergency warranty repair parts will be shipped directly from the factory within 24 hours. Furthermore, a Winnebago Industries built part or component that is not in stock will be specially manufactured and shipped air freight.



TRIPSaver
Emergency-Shipped Parts

Warranty Protection

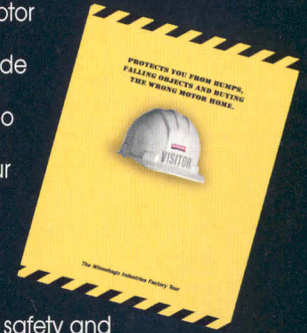
All new Itasca motor homes include a 12-month/15,000-mile basic protection plan, 36-month/36,000-mile warranty protection on lamination and slideroom construction and assemblies, and a standard 10-year limited parts and labor warranty on the roof. As if those aren't enough, we also stand behind most major appliances and equipment we install (a rarity in the industry) so you can count on the convenience of one-stop service for warranty repairs. It all adds up to some of the most comprehensive warranty programs in the industry backed by the most recognized motor home manufacturer in the world.



Visit us at
www.winnebagoind.com

Read this guide.

To learn more about what separates our motor homes from others, ask for this free guide next time you visit your Winnebago Industries dealer. It explains our superior manufacturing process. Use it to learn more about important safety and quality considerations as you shop for the motor home that's best for you.



For Sales and Service Information Contact:



©1999 Winnebago Industries, Inc.

Printed in USA

Seat belts are your most important hookup. Always buckle up.