

EXECUTIVE 2001



 *The Executive*

# Specifications

## for the 2001 Executive

### Body Construction

Semi-Monocoque Tubular Steel Frame  
Painted Exterior Graphics w/UV Protective Clearcoat  
Rear Cap w/RAM Air Design w/Sidewall Air Intake  
Laminated Gelcoat Fiberglass Steel Framed Sidewalls  
Fiberglass Front Cap & Power Generator Door  
Engine Access Door w/Pantograph Hinges & Struts  
Seamless One-Piece Molded Crowned Fiberglass Roof  
Pantographic Baggage Doors w/Electric Locks  
Pass Through Storage Compartments  
Monaco Full Length Mudflap w/Stainless Steel Logo  
10,000 lb Hitch Receiver  
Automatic Hydraulic Leveling System  
Dual Air Brake System  
Polished Aluminum Wheels/Two Inner Steel Wheels  
Anti-Locking Brakes  
Self Priming Fuel Filter (ISM Only)  
Self Fuel Filter (ISC Only)  
Dual Fuel Fill  
Adjustable Brake and Accelerator Pedals  
Rear Ladder

### Options

Acrylic Front Protective Mask  
Storage Bay Slide-Out Tray (One Side)  
Complete Pass Through Storage Bay Slide-Out Tray

### Cockpit Features

6-way Power Designer Leather Pilot & Co-Pilot Seats  
w/Electric Lumbar Heated Adjustments & Power  
Footrest on Co-Pilot Seat  
Integrated 3-Point Seat Belts in Pilot & Co-Pilot Seats  
18" Steering Wheel w/Controls for Windshield  
Wipers, ICC & Cruise Control  
In-Dash Stereo 2-DIN AM/FM Cassette, CD Player  
160W System  
Rear Vision System w/Audio  
Electronic AC/Heat Climate Control System  
Driver Passenger Floor Mats  
Docking Lights  
Driver's Side Window Pull-Down Sun Screen  
Power Front Windshield Sunvisors  
Adjustable Foot Pedals  
Audible Turn Signals  
40 Channel Handheld CB  
Chrome Air Horns  
Air-Actuated Power Step Cover (FD Models Only)  
Chrome Remote Control Heated 3-way Adjustable  
Mirrors w/Turn Signal

### Options

Buddy Seat w/Power Footrest  
Message Center  
Electric Privacy Drape  
In-Dash Monitor AM/FM Radio w/CD Player &  
VDO/GPS Navigation System & Bedroom Radio

### Appliances and Accessories

DVD Player  
20" Stereo Color TV w/Remote Control Stereo in  
Living Room & Bedroom  
Stereo VHS/VCR  
Power TV Antenna  
Bose Home Theater System, CD Player & Speakers  
Cellular Phone Antenna  
Microwave Convection Oven  
Recessed 2-Burner Cooktop  
4 Door Refrig. w/ Ice Maker & Raised Panel Doors  
Washer/Dryer Prep  
DSS Ready  
Telephone Jack (Dinette, Dash & Bedroom Night Stand)  
Bedroom Radio Remote Pod

### Options

Fully Automatic DSS System  
Cabinet Ice Maker w/Raised Panel Door (Not Available  
in 38' 42' PLS, 42' SO & 43')  
Washer/Dryer Combination

### Interiors

Designer Decors: Crown Royal, Bronze, Colonial  
Blue, Caribbean Sea, Ralph Lauren Polo Club,  
Stetson, Park Avenue  
Ceramic Tile Flooring in Kitchen & Bath  
Deluxe Carpeting in Living Room & Bedroom  
Stained or Natural Oak Cabinetry  
Designer Wallpaper Throughout  
Sleeper Sofa  
Corian Kitchen Countertop w/Integrated Sink  
Corian Bathroom Countertop w/Molded Sink &  
Accent Stripe  
Corian Dinette Table w/Four Upholstered Chairs  
Hidden Hinges on Cabinet Doors  
Decorative Headboard & Mirror w/Accent  
Day/Night Pleated Shades in Living Area & Bedroom  
Mini-Blinds in Kitchen & Bath  
Carpet-Lined Cabinet Shelves  
Vinyl Ceiling  
Wardrobes w/Decorative Mirror (N/A on 43' DS)  
Brass Fixtures in Bathroom

## Interiors (continued)

One-Touch Kitchen Sink Faucet  
Skylight in Shower  
Folding Party Table  
Corian Window Sills in Living Room  
Queen Island Bed w/Premium Mattress  
Decorative Fabric Window Valances in Galley & Bath  
Decorative Lights  
Towel Bars  
Bedroom Overheads  
Kitchen Cabinet w/Drawer & Corian Pull-Out Shelf  
Carousel Closet (43' DS Only)

### Options

White Wash, Walnut, Natural, Stained Cherry or  
Natural Maple Cabinetry  
Booth Dinette w/Storage Doors  
Fabric Swivel Recliner  
Leather Swivel Recliner  
Leather Barrel Chair(s)  
Leather Sleeper J-Lounge w/Drawer (N/A in 38' PBS)  
Leather Sleeper/Loveseat w/Drawer (N/A in 38' PBS)  
Leather U-Lounge Dinette  
Leather J-Lounge Dinette  
Leather J-Lounge/U-Dinette  
Euro Leather Recliner  
Euro Fabric Recliner  
Computer Table  
Bathtub (In 40', 42' S/O & 43' DS2 )  
Twin Beds (38' & 42' S/O Only)  
Wraparound Curbside Desk w/Barrel Chair  
Heated Tile Flooring  
LeRowan Shelving (43' DS Only)

## Electrical System and Lights

Fluorescent Lighting in Bathroom & Kitchen  
Battery Maintainer  
Inverter w/Auto Genstart  
Halogen Lights Under Cabinets (LR & Dinette)  
Four 6 Volt House Batteries  
One 8D 12V Deep Cycle Battery (2 on ISM)  
Emergency Start Switch  
50 AMP 120/240V Distribution Panel & Power Cord  
w/Quick Disconnect  
Lighted Utility Center (Telephone, Cable TV, Water, Elec.  
Hookups)  
10 KW Diesel Generator on Power Slide-Out Tray  
Water Pump Switch in Service Bay

### Options

Solar Battery Charger  
All Electric Coach, Two Inverters/5 Gel Batteries/270

Amp Alternator (Requires Aqua Hot Heating System  
Option)

50 AMP Power Cord Reel

## Heating, Vents and Air Conditioning

42,000 BTU Electronic Ignition Furnace  
Two 13,500 BTU Low Profile Ducted Roof A/C,  
Electronic Ignition w/Heat Pump w/Roof AC  
Drain-Off  
Third A/C (42' & 43' Models Only)  
Fan w/Thermostat Control in Kitchen  
Fan in Bathroom

## Plumbing and LP Systems

Water Filtration System  
Drain Hose in Separate Storage Compartment  
10 Gal. Gas/Electric Water Heater w/DSI  
Manabloc Water System for Entire Coach  
Black Tank Flush

### Options

Aqua Hot Water System  
Insta Hot Water

## Windows, Doors and Awnings

Keyless Entry  
Thermal Dual Pane Windows  
Front Entry Door w/Removeable Screen  
Awning w/Assist Arms  
Slide-Out Room Awnings  
Patio Awning  
Window Awnings  
Passenger Side Window  
Side Door (40' PBDLS SD Only)

### Options

Automatic Patio Awning

## Safety Features

LPG Detector  
10 BC Fire Extinguisher  
CO Detector

### Options

Deluxe Security System  
Safe

Due to product improvements, changes during the model year and/or transcription errors that may occur, information represented within this brochure may not be accurate at the time of your purchase. If certain information is significant to your purchasing decision, please confirm the information with your dealer prior to submitting your order.

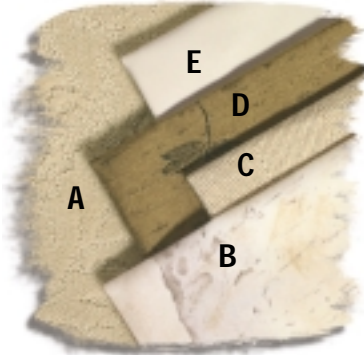
# Color Choices

## for the 2001 Executive

The following designations represent the fabric or carpet usage for all seven (7) interior decors:

A - Carpet, B - Bedspread, C - Sofa, D - Dining Chair, E - Vinyl/Leather Dash/Furniture

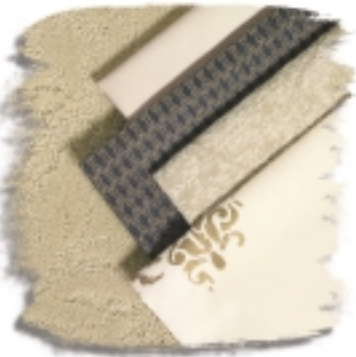
Bronze



Caribbean Sea



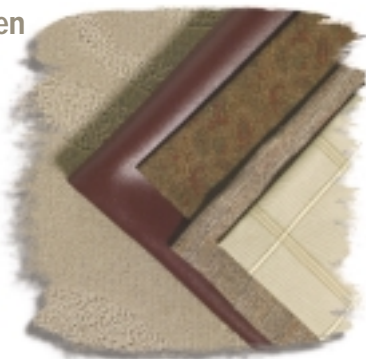
Colonial Blue



Crown Royal



Ralph Lauren  
Polo Club



Ralph Lauren  
Park Avenue



Ralph Lauren  
Stetson

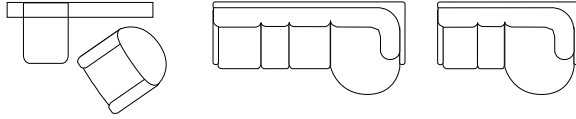


While the color of the motorhomes exterior and the interior fabrics depicted in this sales brochure are fair and reasonable depictions, the colors depicted may not be an exact match of the actual colors because of the variances in photo-processing and variances caused by inserting the photographs within the sales brochure. Due to product improvements and/or changes during the course of the model year, photography represented herein may not reflect exact offerings in your unit. Please confirm item availability with your dealer at the time of the order.

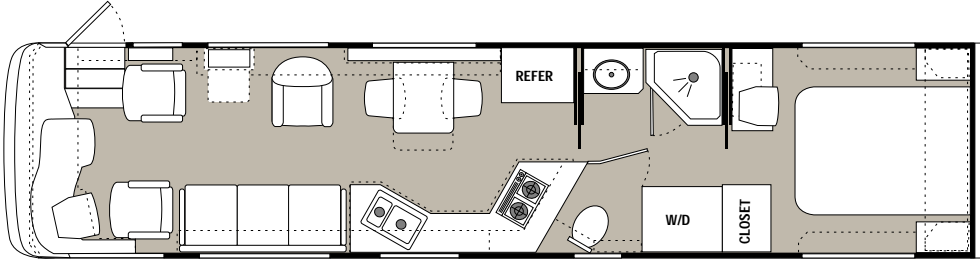
# Floorplans and options for the 2001 Executive

Options on all floorplans:

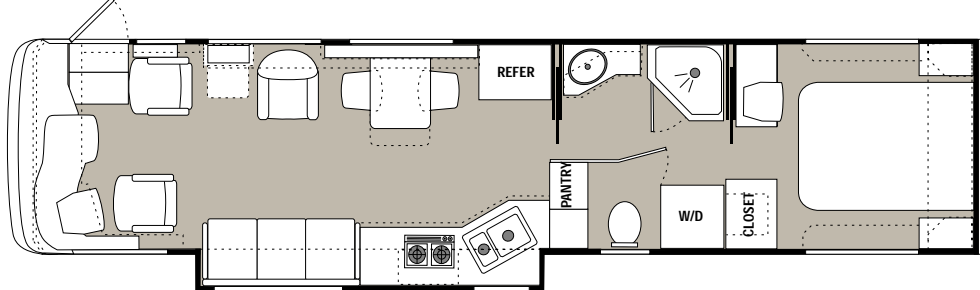
Corian Wrap-around or J-Lounge in varying lengths



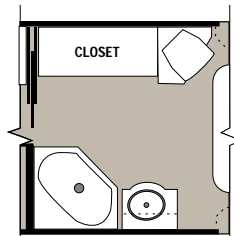
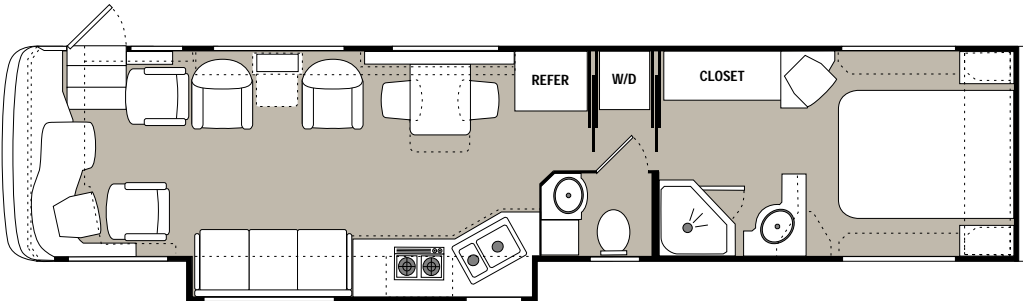
38' PBS FD



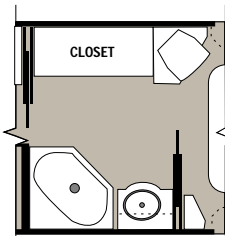
38' DB FD



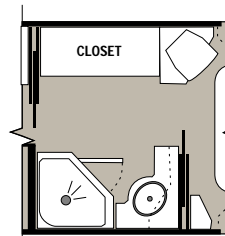
40' PBDLS FD



Open Bath w/Tub

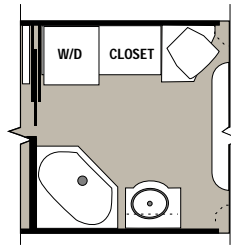
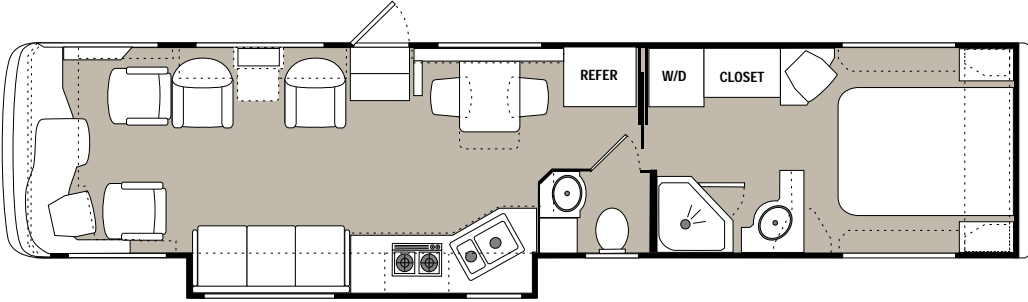


Closed Bath w/Tub

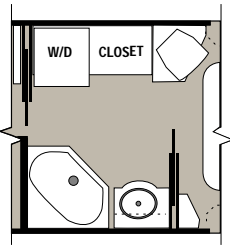


Closed Bath w/Shower

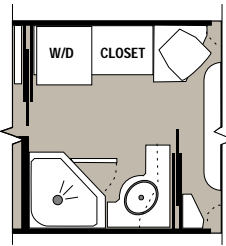
40' PBDLS SD



Open Bath w/Tub

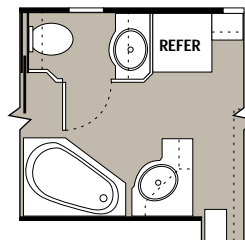
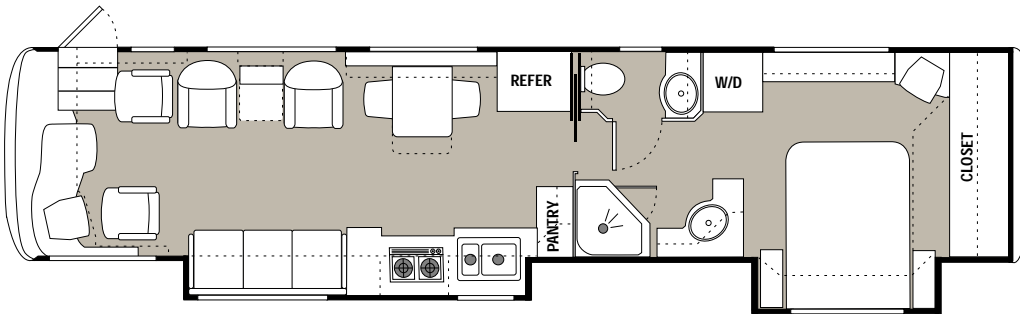


Closed Bath w/Tub

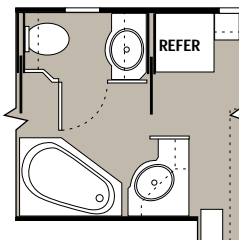


Closed Bath w/Shower

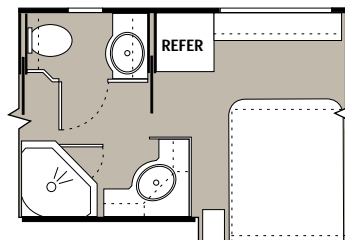
40' DS



Open Bath w/Tub

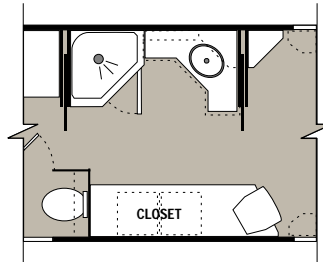
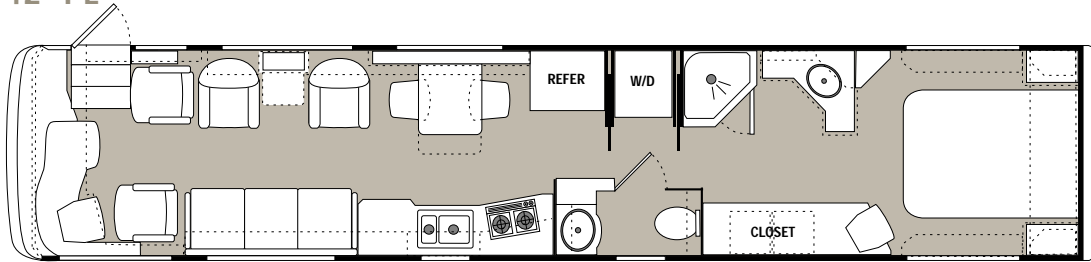


Closed Bath w/Tub



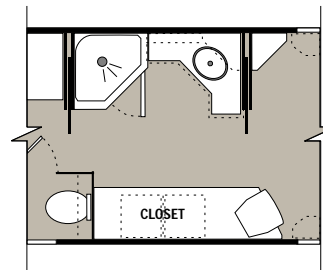
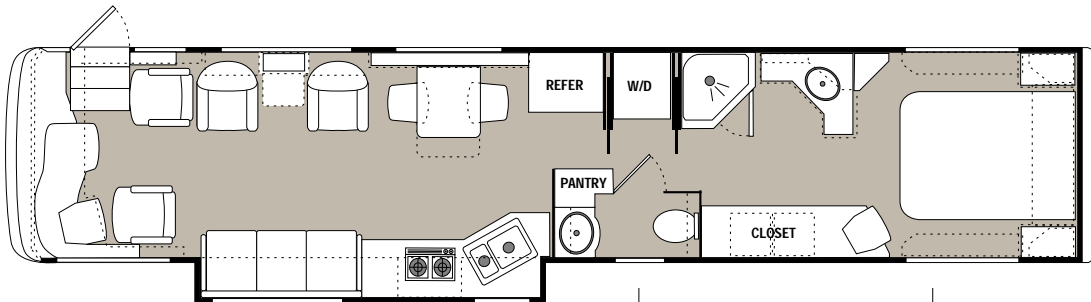
Closed Bath w/Shower

42' PL



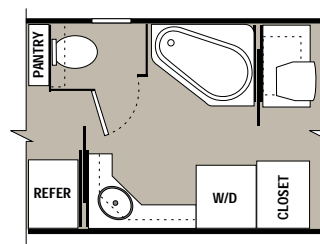
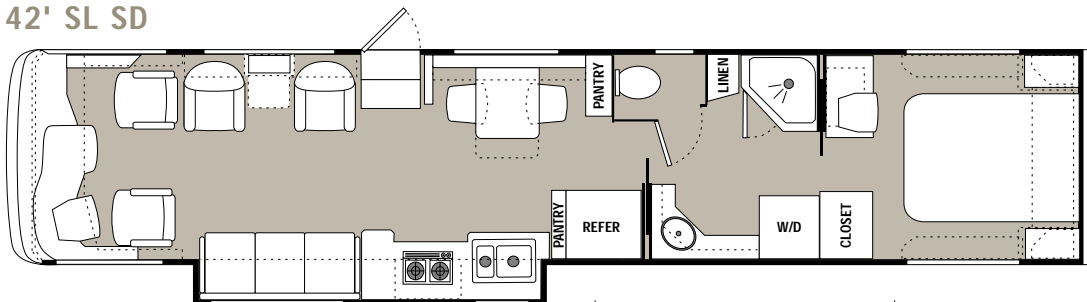
Closed Bath Option

42' PLS



Closed Bath Option

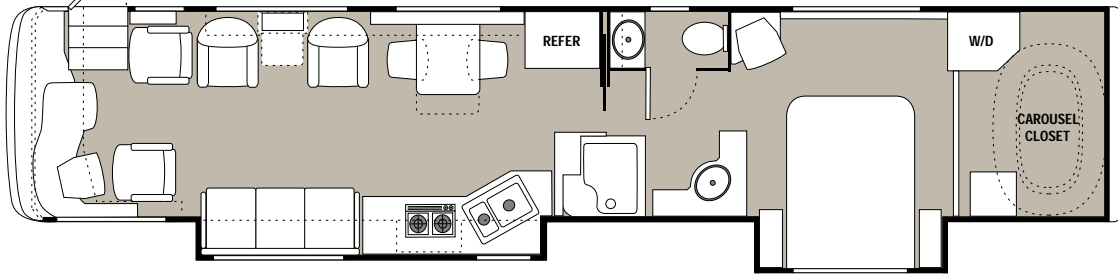
42' SL SD



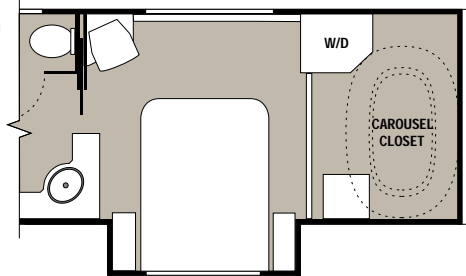
Tub Option



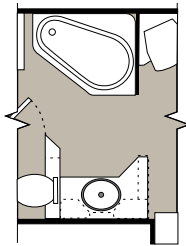
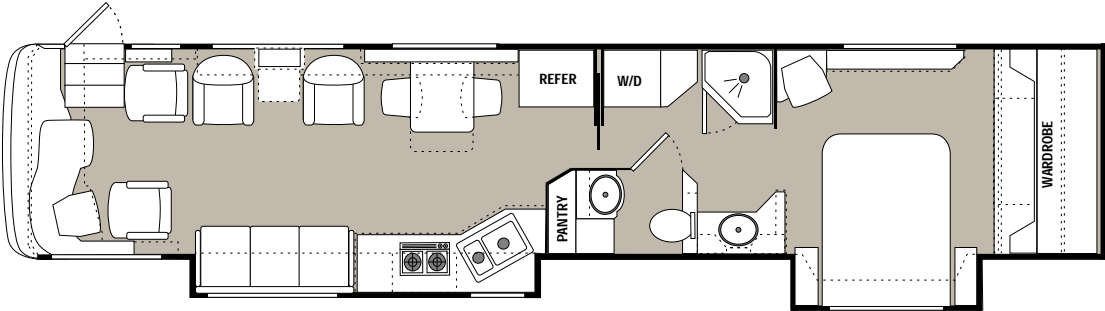
43' DS



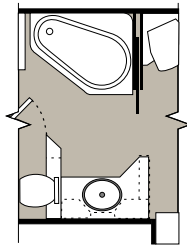
Closed Bath Option



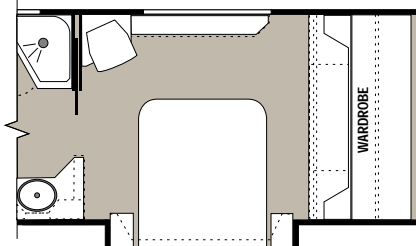
43' DS2 FD



Open Bath w/Tub



Closed Bath w/Tub



Closed Bath w/Shower

# Chassis and Weight Charts

## for the 2001 Executive

### Chassis/Engine/Suspension

Chassis	Roadmaster
Alternator	200 Amp
Suspension	Full Cushion Air Glide Suspension w/8 Outboard Mounted Airbags & 8 Bilstein Shock Absorbers (10 Airbags & Shocks on Tag Axles)
Radial Tires	Goodyear 295/75R/22.5 Steel Belted Radials w/H Rating
Diesel Engine	Cummins 350hp ISC Turbo (38' & 40' Only) w/Pacbrake Exhaust Brake & Cooler
Cubic Inch Displacement	505/8.3L
Torque	1050 lbs.ft. max @1300 rpm
Transmission	Allison 3000MH 6-Speed World Transmission w/Electronic Shifter & Cooler
Rear Axle Ratio	4:78 w/350 hp Engine
Diesel Engine	Cummins 500hp ISM Turbo (42' & 43' Models Only, Optional on 38' & 40') w/Jacobs Engine Brake
Cubic Inch Displacement	661/11L
Torque	1550 lbs.ft. max @ 1200rpm
Transmission	Allison 4000MH 6-Speed World Transmission w/Electronic Shifter & Cooler
Rear Axle Ratio	4.30 w/500hp Engine

Weights*	38' Model	40' Model	42' Model	43' Model
Gross Vehicle Weight Rating	33,000lbs	46,000lbs	46,000lbs	46,000lbs
Gross Combined Weight Rating	43,000lbs	53,000lbs	53,000lbs	53,000lbs
Front Gross Axle Weight Rating	13,000lbs	13,000lbs	13,000lbs	13,000lbs
Rear Gross Axle Weight Rating	20,000lbs	23,000lbs	23,000lbs	23,000lbs
Tag Axle Weight Rating	N/A	10,000lbs	10,000lbs	10,000lbs

### Measurements

Wheelbase	246"	245"	261"	261"(DS2 271")
Exterior Overall Height	11'10"	11'10"	11'10"	11'10"
Exterior Width	100.5"	100.5"	100.5"	100.5"

### Tank Capacities\*\*

	(All Tank Capacities Are Approximate)			
Diesel Fuel	144.4 gallons	144.4 gallons	144.4 gallons	144.4 gallons
Grey Water	63 gallons	63 gallons	63 gallons	63 gallons
Black Water	45 gallons	45 gallons	45 gallons	45 gallons
Fresh Water	100 gallons	100 gallons	100 gallons	100 gallons
LP Tank***	55 gallons	55 gallons	55 gallons	55 gallons

\*Due to the large variety of options and floorplan arrangements available to our customers, actual weights for each unit can differ significantly. Monaco provides a weight sticker on each unit we produce which includes that unit's tank capacities and approximate weight. Consult your Monaco dealer for unit availability and further information.

\*\*All tank capacities are approximate. Actual "useable capacity" may vary based upon specific installation.

\*\*\* Tank manufacturer's listed water capacity (WC) actual filled. LP capacity is 80% of listing due to safety shut off required at tank.



A Division of Monaco Coach Corporation

91320 Industrial Way, Coburg, Oregon 97408 • Toll Free (800) 634-0855 or (541) 686-8011

Indiana Division 606 Nelson's Parkway, Wakarusa, Indiana 46573 • Toll Free (800) 650-7337

Monaco Coach Corporation is traded on the NYSE under the listing MNC