

Minnie®

2001 WINNEBAGO





Minnie 331 – Baroque Bouquet

The StoreMore® Hydraulic Slideout System expands your interior living and storage space. Ceiling-ducted roof air and available dual-glazed thermo-insulated windows keep you cool throughout.

Home comforts include stile and rail cabinetry with four-inch cabinet pulls that are easy to open; in-line galley with recessed stainless steel double sink; ample storage space; abundant interior lighting; comfortable queen bed; conveniently positioned television and day/night pleated shades for added privacy.

THE FEATURE-RICH MINNIE IS EASY TO OWN AND A PLEASURE TO DRIVE.

The Minnie is an affordable Class C motor home loaded with features you normally would expect to find only in more expensive motor homes. Its exceptional value, comfort and reliability will leave you free to discover the joys of the open road.

You'll travel in style and comfort in a Minnie. Its list of standard and available features is long, and includes ceiling-ducted roof air, day/night pleated shades and dual-glazed thermo-insulated windows to keep you cool even on the hottest days. The Minnie also features custom Stitchcraft furniture (including available leather cab seats) that's as beautiful as it is functional.

The Minnie has enough towing capacity to pull a small car or boat. And with six floorplans to choose from, you're sure to find a Minnie that's just right for you.



Minnie 329 – Spring Mist The Minnie makes the most of its overhead space. With the available overhead bunk TV option you can watch your favorite programs and videos on the large 19-inch forward television with available VCR. (You can even expand your viewing options with the available satellite dish system.) When it's time for bed, simply pull out the single overhead bunk bed for a good night's rest.

WINNEBAGO

BUILT WITH YOU IN MIND

We use computer-aided imaging and advanced testing procedures to check and recheck the design of our motor homes. But that's just the beginning. The final word on what goes into our products comes from motor home owners like you. We believe it takes real people to understand all the details and features that add up to a satisfying travel experience. So our design teams are always asking experienced RVers about how they use their RVs. Beyond all the technology and planning, our goal is simple—to make motor homes that will meet and exceed your expectations.

StoreMore® Hydraulic Slideout System

Extend your living space, then unload your gear. Exterior slideout compartments extend with the slideout room to make loading and unloading easier anytime.



Onan® MicroQuiet™ Generator

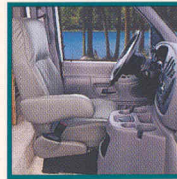
You can still have power when there is no electrical hookup. The available quiet, efficient generator produces 4,000 watts of power to the Minnie's 110-volt wiring system.



PRACTICAL FEATURES FOR CAREFREE LIVING

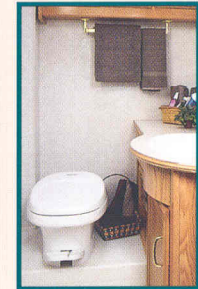
Ergonomic Cockpit Design

Getting there is half the fun, especially with your commanding view from the Minnie's feature-rich cockpit. Full-size cupholders, storage compartments, radio and cruise control are all within easy reach. Sit comfortably in the standard cloth-upholstered high-back cab seats with fixed lumbar support, or choose the stylish driver and passenger seat leather upgrade. An optional CD player is available only with the Ford chassis.



Roomy Galley

The Minnie's fully equipped galley is easy to use and easy to clean up. Standard equipment includes quality stile-and-rail wood cabinetry; stainless steel, recessed double sink with single-control faucet; microwave; refrigerator/freezer and Magic Chef® three-burner range. Large four-inch cabinet pulls make it easier to open doors and drawers.



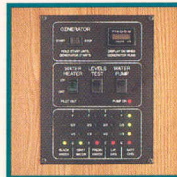
Bathroom

The residential-height foot pedal flush toilet in the split bath adds convenience, while the shower across the hall has a folding door and skylight.



Door Latch and Handle

The convenient exterior assist handle makes exit and entry easier. An integrated deadbolt latch and new screen door latch are more secure and easier to operate.



Monitor Panel

Check vital functions such as tank levels, LP gas and battery power with this new flush-mounted monitor panel located conveniently in the galley area.



Exterior Mirror

Aerodynamic-styled mirrors feature regular reflection and convex corner mirrors to provide a clear field of vision. Or choose the newly available electric adjustable heated mirrors for maximum visibility.



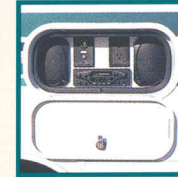
Rain Gutter

No drips. Our awning rail with built-in rain gutter keeps things dry by channeling water away from the awning.



Exterior Wash Station

Don't let a little dirt stop you from enjoying the great outdoors. Clean up outside! The exterior wash station adds convenience and helps keep your Minnie's interior cleaner.



Exterior Entertainment Center

Available exterior entertainment center includes AM/FM stereo with antenna, cassette or CD, 12-volt DC receptacle, TV jack, 110-volt outlet and speakers in a lockable compartment.



Running Boards

Step in and out with ease on corrosion-resistant aluminum running boards that are as functional as they are good looking.



Rugged Trailer Hitch

Go ahead, take along your car, boat or trailer when you hit the road. The Minnie's standard trailer hitch includes a 3,500-lb. drawbar with a vertical tongue weight rated at 350 lbs.

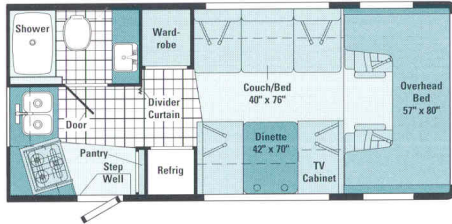


EXTERIORS DESIGNED FOR TRAVEL



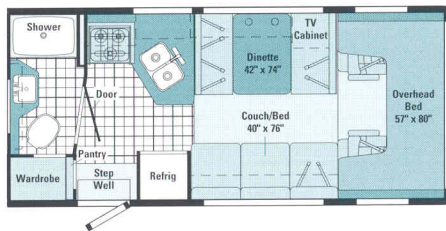
WINNEBAGO MINNIE 2001 FLOORPLAN OPTIONS

MINNIE INTERIORS



22E

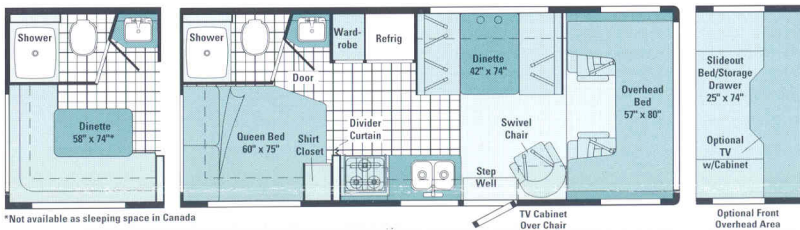
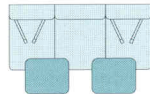
- Convenient angled rear galley
- Rear corner bath
- Generous sleeping space



22R

- Roomy angled galley
- Large rear bath
- Generous sleeping and seating space

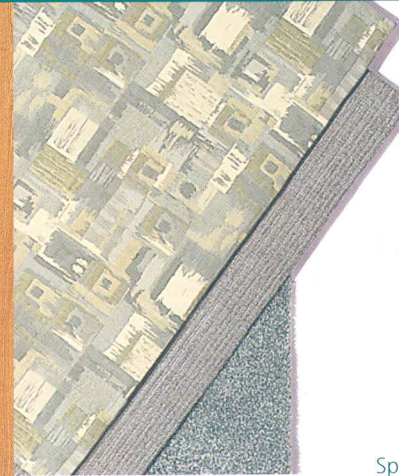
Couch/Bed w/2 Tables 40' x 76"



24V

- Private rear bath and bedroom with queen-size bed
- Optional L-shaped lounge
- Overhead bunk or available overhead entertainment center

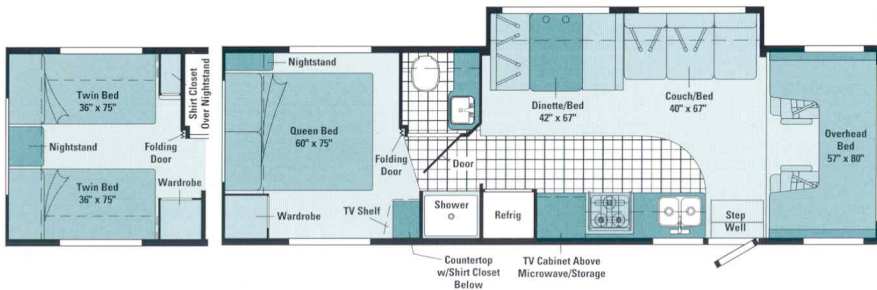
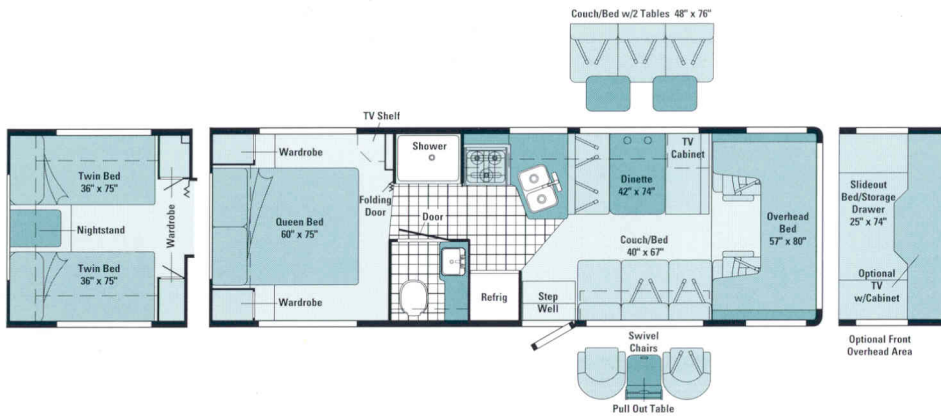
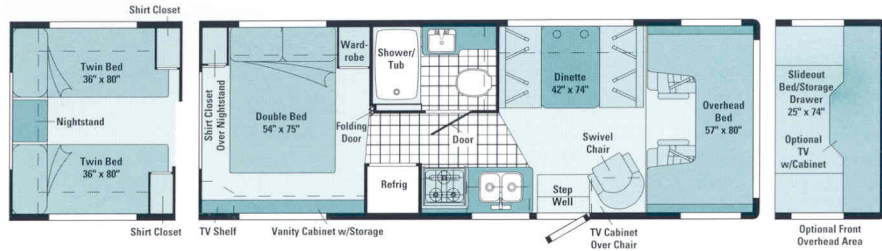
*Not available as sleeping space in Canada



Spr



Blu



Standard Vinyl Floorcovering



Seat Belts

Note: Dimensions shown are for sleeping space only and dashed lines denote overhead storage areas.

27P

- In-line galley
- Walk-around double bed with vanity cabinet
- Large enclosed private bath with shower/tub
- Twin bed option

29N

- Angled galley
- Choose from queen or twin bed option
- Several lounge area seating configurations available

31C

- In-line galley with TV cabinet above microwave/storage area
- Dinette/couch slideout with **STOREMORE** Hydraulic Slideout System



Portsmouth Oak Woodgrain



WINNEBAGO MINNIE 2001 SPECIFICATIONS

	22E	22R	24V	27P	29N	31C
Length - Ford/Chev	22'1"/22'6"	22'1"/22'6"	24'6"/24'11"	27'/27'5"	29'4"/NA	31'4"/NA
Exterior Height w/AC - Ford*/Chev*	11'1"/11'3"	11'1"/11'3"	11'11'3"	11'3"/11'5"	11'2"/NA	11'2"/NA
Exterior Width ^Δ	8'3.9"	8'3.9"	8'3.9"	8'3.9"	8'3.9"	8'3.9"
Exterior Storage	10 cu. ft.	12 cu. ft.	28 cu. ft.	38 cu. ft.	61 cu. ft.	45 cu. ft.
Interior Height	6'11"	6'11"	6'11"	6'7"	6'7"	6'7"
Interior Width	8'	8'	8'	8'	8'	8'
Freshwater Capacity w/Heater*	36 gal.	36 gal.	46 gal.	39 gal.	37 gal.	37 gal.
Holding Tank Capacity - Black/Gray	30/36 gal.	36/30 gal.	30/36 gal.	34/42 gal.	27/40 gal.	34/32 gal.
LP Capacity [∇]	12 gal.	12 gal.	12 gal.	12 gal.	12 gal.	18 gal.
Fuel Capacity - Ford/Chev/Diesel	37/35/NA gal.	37/35/NA gal.	55/55/NA gal.	55/55/55 gal.	55/55/55 gal.	55/NA/NA gal.
GVWR - Ford/Ford Diesel (CA)	10,700 lbs./NA	10,700 lbs./NA	11,500 lbs./NA	14,050/14,000* lbs.	14,050/14,000* lbs.	14,050 lbs./NA
GVWR - Ford Diesel (49 States)	NA	NA	NA	14,050* lbs.	14,050* lbs.	NA
GVWR - Chev	12,300 lbs.	12,300 lbs.	12,300 lbs.	12,300 lbs.	NA	NA
Wheelbase - Ford/Chev	138"/139"	138"/139"	158"/159"	188"/189"	190"/NA	220"/NA

Standard - S Optional - O

22E 22R 24V 27P 29N 31C

AUTOMOTIVE/CHASSIS

	22E	22R	24V	27P	29N	31C
Spare Tire, Stainless Steel Wheel Covers, Tire Tool wrench, Trailer Hitch 3500# drawbar/350# maximum vertical tongue weight & wiring	S	S	S	S	S	S
Auxiliary Ride-Rite® Rear Air Springs Ford			O	O	O	
Chassis - Chevrolet G3500 8.1L SFI Vortec engine, 124-amp alternator, 4-wheel anti-lock brakes, 4L80-E transmission	O	O	O	S		
Chassis - Ford E350 5.4L Super-Duty V-8 SOHC Triton™ engine, 4-speed overdrive transmission, 130-amp alternator, dual airbags, 4-wheel anti-lock brakes	O	O	O			
Chassis - Ford E350 6.8L Super-Duty V-10 SOHC Triton engine, 4-speed overdrive transmission, 130-amp alternator, dual airbags, 4-wheel anti-lock brakes	S	S	S			
Chassis - Ford E450 6.8L Super-Duty V-10 SOHC Triton engine, 4-speed overdrive transmission, 130-amp alternator, dual airbags, 4-wheel anti-lock brakes				O	S	S
Chassis - Ford E450 7.3L Power Stroke® diesel engine, 4-speed overdrive transmission, 130-amp alternator, dual airbags, 4-wheel anti-lock brakes				O	O	
Stainless Steel Wheel Liners	O	O	O	O	O	O

CAB AREA & DRIVER CONVENIENCES

	22E	22R	24V	27P	29N	31C
Beverage Tray, Cab Divider Curtain, Cab Seats w/Seat Belts 3-point shoulder w/adjustable D-loop & lap w/retractors, armrest, fixed lumbar support, multi-adjustable slide/recline, fabric covered, Cigarette Lighter/12 Volt Electrical Supply, Cruise Control, Domelight, Hood Release, Intermittent Windshield Wipers, Power Assist Steering w/Tilt Wheel, Power Door Locks & Windows, Rubber Driver & Passenger Floor Mats, Sunvisors (2), Trim Panels driver & passenger doors (chassis supplied)	S	S	S	S	S	S
Cab Seats leather insert w/vinyl surround	O	O	O	O	O	O
Glove Compartment Chevrolet only	S	S	S	S		

22E 22R 24V 27P 29N 31C

Pantry	S	S				
Spice Rack built into cabinet		S			S	
BATH						
3-Rod Towel Rack mounted to door, Dual-control Lavatory Faucet, Dual-control Shower Faucet w/Flexible Shower Head, Lavatory Cabinet, Medicine Cabinet, Power Roof Vent, Rectangular Sink, Removable Clothes Rod, Shower Door folding, Tissue Holder, Toilet w/Foot Pedal flush	S	S	S	S	S	S
Shower	S	S	S		S	S
Shower/Tub					S	
Shower Light, Skylight					S	S
Towel Bar	S		S	S	S	S
Towel Ring	S	S	S	S	S	
Wall Mirror w/frame	S			S	S	S

BEDROOM

Bedsprad, Pillow Shams, Mattress Serta® w/underbed storage*		S	S	S	S	
Decorative Wall Lamp						S
Double Bed				S		
Queen-Size Bed		S			S	S
Twin Beds			O	O	O	
Nonpowered Roof Vent			S	S	S	

EXTERIOR

AC Duplex Receptacle, Aluminum Running Boards, Awning Rails w/rain gutter	S	S	S	S	S	S
---------------------------------------------------------------------------	---	---	---	---	---	---

ENTERTAINMENT						
Radio (Cab) AM/FM stereo cassette, speakers (4), Satellite System Ready, TV Enhancement Package antenna (amplified), 12 volt receptacle(s), interior jack(s), coax wiring, cable input (27P, 29N and 31C include bedroom TV shelf or stand*)	S	S	S	S	S	S
Radio (Cab) AM/FM stereo CD (Ford)	0	0	0	0	0	0
Satellite Dish Antenna RV digital, elevation sensing unit	0	0	0	0	0	0
13" 12 Volt Color TV & VCP w/remotes & swivel/slide shelf, front lounge/dinette area*	0	0	0	0	0	0
19" AC Color TV w/remote & video selection system, galley cabinet*						0
19" AC Color TV & VCR w/remotes & video selection system, galley cabinet*						0
19" AC Color TV w/remote, video selection system & single bunk, front overhead bunk*			0	0	0	
19" AC Color TV & VCR w/remotes, video selection system & single bunk, front overhead bunk*			0	0	0	
Exterior Entertainment Center w/Cassette or CD Player DC receptacle, AC duplex receptacle, AM/FM radio, TV jack, radio antenna, speakers (2), lockable compartment	0	0	0	0	0	0
Exterior Entertainment Center Table* removable	0	0	0	0	0	0

INTERIOR

Ceiling Lights incandescent w/wall switches, Cupholder(s), Day/Night Pleated Shades, Front Overhead Bunk mattress, sliding side windows, privacy curtain, side storage cabinets, Nonpowered Roof Vent front overhead bunk, Textured Fabric Ceiling	S	S	S	S	S	S
Dual-Glazed, Thermo-Insulated Windows*	0	0	0	0	0	0
Front Overhead Bunk Ladder						S
Front Overhead Bunk Window delete	0	0	0	0	0	0
Wall Mirror frameless, decorative						S
Wardrobe Cabinet clothes rod, carpeted shelf	S	S	S			

CABINETRY

Portsmouth Oak Woodgrain stile-and-rail construction w/raised panel inserts (upper doors only)	S	S	S	S	S	S
-------------------------------------------------------------------------------------------------------	---	---	---	---	---	---

COUNTERTOPS

Laminate w/wood-look T-mold edging	S	S	S	S	S	S
-------------------------------------------	---	---	---	---	---	---

FLOORCOVERING

Carpeting w/Pad, Vinyl Floorcovering bath & galley	S	S	S	S	S	S
-----------------------------------------------------------	---	---	---	---	---	---

FURNITURE

Couch	S	S		S	S	
Couch w/2 tables			0		0	
Dinette access to storage below	S	S	S	S	S	S
Lounge Chair(s) swivel/slide			S	S	0	
L-Shaped Dinette rear			0			

GALLEY

Decorative Wall Border, Double Stainless Steel Sink sink cover (countertop material), Microwave Oven w/Range Hood, Range 3-burner w/oven, Magic Chef, [®] Range Hood w/Light & Fan, Refrigerator/Freezer double-door, Norcold, [®] Single-control Faucet	S	S	S	S	S	S
------------------------------------------------------------------------------------------------------------------------------------------------------------------------------------------------------------------------------------------------------------------------------------------------------------	---	---	---	---	---	---

Ladder, Mirrors plate mount, w/convex, Porch Light w/interior switch, Rear Mudflaps, Side Wall Skin 1-piece fiberglass, smooth, Single-door Step manual, Storage Compartments valance panels, trunk liner						
Awning* patio	0	0	0	0	0	0
Mirrors plate mount, electric remote w/defrost	0	0	0	0	0	0
Single-door Step electric w/door jamb switch	0	0	0	0	0	0

SYSTEMS

6 Gallon Electronic Ignition Water Heater, 10' Sewer Hose stores in bumper, 30-Amp 25' Power Cord, AC/DC Load Center/Converter Unit DC automotive style fuses, AC circuit breakers, 15-amp battery charger, 45-amp converter, Automatic Dual Battery Charge Control, Automotive Heater/Air Conditioner, Auxiliary Start Circuit, City Water Hookup, Coach Battery deep cycle, Coach Battery Disconnect System, Generator Prep Kit, LP Tank permanent mount w/gauge, Monitor Panel wall mount, battery condition gauge, generator hourmeter gauge,* generator start/stop switch,* holding tank levels, LP tank level, water heater switch, water heater light, water pump switch, water tank level, Water Heater Winterization Bypass Valve, Water Pump demand, Water System Winterizing Valve, Water Tank Drain, Water Tank Fill w/Locking Door	S	S	S	S	S	S
Coach Batteries* (2) deep cycle	0	0	0	0	0	0
Exterior Wash Station	0	0	0	0	0	0
Furnace 25,000 BTU, Suburban, [®] low profile	S	S	S			
Furnace 30,000 BTU, Suburban, low profile				S	S	S
Generator* 3,600 watt, Onan [®] MicroQuiet, [™] LP				0	0	
Generator* 4,000 watt, Onan MicroQuiet, gas	0	0	0	0	0	0
Heated Drainage System*	0	0	0	0	0	0
Inverter* DC/AC, 130 watt				0	0	0
Roof Air Conditioner 13,500 BTU, ceiling ducted	S	S	S	S	S	
Roof Air Conditioner 14,800 BTU, ceiling ducted						S

SLIDEOUT

Slideout Room (driver side) 20" dinette/couch extension w/slideroom cover, STOREMORE						S
----------------------------------------------------------------------------------------------------	--	--	--	--	--	---

SAFETY

3-Point Cab Seat Belts, 10 B.C. Fire Extinguisher, Bumpers front & rear, Carbon Monoxide Detector/Alarm, Courtesy Light(s) w/Wall Switch(es), Driver & Passenger Airbags Ford, Exterior Assist Handle, Ground Fault Interrupter, High-mount Rear Brake Light, Interior Assist Strap, LPG Leak Detector/Alarm, Laminated Safety Glass Windshield, Lap Belts In Selected Areas, Smoke Detector/Alarm	S	S	S	S	S	S
Escape Window				S	S	S

WARRANTY

12-Month/15,000-Mile Basic Warranty, 36-Month/36,000-Mile Warranty On Structure,** 10-Year Limited Parts & Labor Warranty On Roof	S	S	S	S	S	S
----------------------------------------------------------------------------------------------------------------------------------------------	---	---	---	---	---	---

* The height of each model is based on the curb weight of a typically equipped unit on the standard chassis. The actual height of your vehicle may vary by as much as 2" depending on chassis or equipment variations. Δ Minnie floorplans feature a widebody design — over 96" In making your purchase decision, you should be aware that some states restrict access on some or all state roads to 96" in body width. Before making your purchase decision, you should confirm the road usage laws in the states of interest to you. * Not all items available in combination. See dealer for details. NA = Not Available. † Capacities shown are tank manufacturer's listed water capacity (W.C.). Actual filled LP capacity is 80% of listing due to overfilling prevention device on tank. ** See your dealer for complete warranty documentation information. Winnebago Industries' continuing program of product improvement makes specifications, equipment, model availability and prices subject to change without notice. Comparisons to other motor homes are based on the most recent information available.

NOT ALL MOTOR HOMES ARE EQUAL.

When you purchase a Winnebago Minnie you benefit from unique advantages, beginning with some of the most comprehensive warranty programs in the industry. It includes a 12-month/15,000-mile basic protection plan, 36-month/36,000-mile warranty on the structure and a standard 10-year limited parts and labor warranty on the roof.



Mechanical emergency while on vacation? Go to your nearest Winnebago Industries dealer. TripSaver guarantees that qualifying, in-stock emergency warranty repair parts will be air-shipped from our factory within 24 hours. Plus, every new purchase comes with a one-year membership in our Premium Roadside Assistance Program, a 24-hour nationwide plan that covers road emergencies with free services like jump starts, tire changes, fuel delivery and lockout assistance.



In addition, Winnebago Industries vehicle owners are eligible to enroll in the Winnebago-Itasca Travelers (WIT) Club. As a member, you'll enjoy many benefits, including mail forwarding, trip planning, rallies, caravans and more.

To learn more about what separates our motor homes from others, ask for this free guide next time you visit your Winnebago Industries dealer. It explains our superior manufacturing process. Use it to learn more about important safety and quality considerations as you shop for the motor home that's best for you.



Visit us at www.winnebagoind.com
Seat belts are your most important hookup. Always buckle up.

QUALITY FROM THE GROUND UP. FROM A SOLID SUPERSTRUCTURE™...

We start with a sturdy steel and extruded aluminum substructure, using interlocking joint construction to join the sturdy floor, roof and sidewalls into one solid unit. Sidewalls and backwalls use our patented Thermo-Panel® construction process, with pressure-bond exterior skin, lauan backing and block-foam insulation. Appliances are solidly secured into embedded steel plates.

Built to last, key steel components are subjected to a 12-stage rust-proofing process that cleans, preps, and electrostatically coats components inside and out. With a focus on quality, each new vehicle carries a structural warranty of 3 years or 36,000 miles.



...TO A MORE DURABLE ROOF

Unlike rubber roofs, our crowned one-piece seamless fiberglass Thermo-Panel® roof won't tear or snag on tree branches and other obstacles. It also resists fading, chalking and deterioration, and expansion/contraction is minimal compared to rubber roofs.

In fact, our roof is so durable, it's backed by a 10-year limited warranty for parts and labor.

