

SUNRISE SERIES



2 0 0 1



The Itasca® Sunrise® and Sunrise SE® truly are great motor home values, combining Winnebago Industries quality with an impressive list of standard features and a very affordable price. With seven models to choose from, including the exciting new Sunrise 30W which features a galley/dinette slideout, the Sunrise family offers something for just about everyone.

Sunrise

Meet your needs



Like all Itasca motor homes, many features that would be upgrades on other motor homes are standard on the Sunrise. These include ceiling-ducted air conditioning, electric remote exterior mirrors, and basement storage. In the living area you'll notice Flexsteel® furniture and handsome wood cabinetry with stile-and-rail cabinet doors. The new 30W, shown here, is highlighted with a neo-angled shower with glass door, an off-set queen-size Serta® mattress with two wardrobes and a galley/dinette slideout. Winnebago Industries' exclusive **STOREMORE®** Hydraulic Slideout System, which allows interior and exterior storage compartments to extend with the slideroom, is standard on all Sunrise slides.

Several Sunrise and Sunrise SE models feature a convenient pantry for easy-access to food items.



The available cab area workstation is perfect for writing letters to family and friends or working on your laptop computer. The workstation neatly tucks away when not in use.



The galley in the new 30W slides out and features an angled design for increased functional space. It is highlighted by a Magic Chef® 3-burner range with oven and attractive vinyl plank floorcovering.



Driving the Sunrise or Sunrise SE is as easy as living in it, thanks to the comfortable cab seats with fixed lumbar support and an available rearview monitoring system. On Sunrise, UltraLeather HP™ driver and passenger seats are also available.

SUNRISE DECOR OPTIONS

To assure their strength and durability, fabrics selected for use in the Sunrise and Sunrise SE must pass a series of rigorous tests. Just one example is the "double rub" test, where a machine mechanically simulates a person getting in and out of a seat up to 30,000 times. (This equates to nearly four times a day for over 20 years!)



Sunrise SE

and your budget.



In addition to restyled Stitchcraft furniture and new Portsmouth Oak woodgrain cabinetry, the 2001 Sunrise SE's standard feature list now includes ceiling-ducted roof air and a Comfort and Convenience Package, complete with couch overhead lights, beveled wood-edge dinette table and galley countertops, a beverage tray, makeup lights in the bath and a wall-mounted clock.

SUNRISE SE DECOR OPTIONS



Portsmouth Oak Woodgrain

The front 19" color TV with remote and video selection system is another nice standard feature. All Sunrise and Sunrise SE models are digital satellite system ready.



A residential-height toilet with foot flush pedal, shower with flexible shower head, and large mirror with makeup lights are among the 31B bathroom's premium features.



Large 4" drawer and door handles are another user-friendly feature of the Sunrise and Sunrise SE.

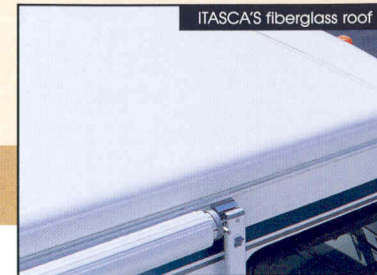
The all-new flush-mounted monitor panel includes a generator start/stop switch and hourmeter (with available generator) and water heater indicator lights. The **POWERLINE™** Energy Management System, standard on the 33V and 35C, efficiently allocates power to keep your systems running smoothly.



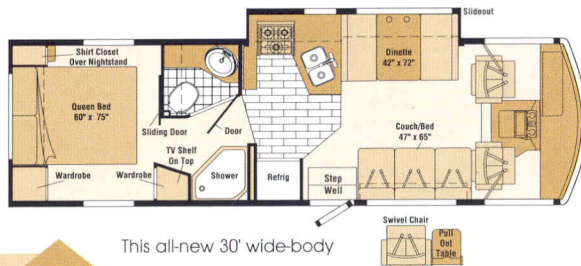
What sets a Winnebago Industries motor home apart? You've already seen that we offer more on the inside. But our advantages are much more than simply increased interior comfort. From our smooth, one-piece fiberglass Thermo-Panel® exterior (which you can see), to the welded steel **SUPER STRUCTURE™** our motor homes are built on (which you can't see), and from the fit and finish of our storage compartments (which you can see), to the one-of-a-kind joints that secure our walls to the floor and ceiling (which you can't see), our motor homes are simply built to a higher standard. A standard we've been improving on for more than forty years.



Sunrise models feature rear heated pass-through storage compartments and insulated belt-line storage doors with a single-handle latch and gas struts for easy one-handed opening. Sunrise models (30W, 33V and 35C) with front sliderooms feature Winnebago Industries' **STOREMORE™** Hydraulic Slideout System. StoreMore allows interior and exterior storage compartments to extend with the slideroom. For easy loading and unloading, lights are located within the StoreMore storage compartments.



Sunrise Floorplans



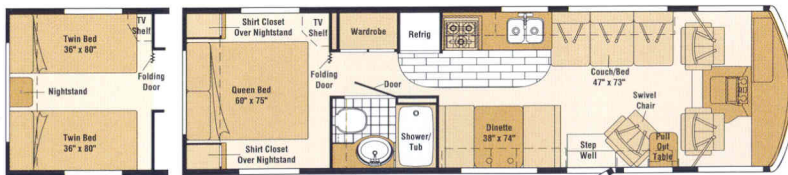
New 30W

This all-new 30' wide-body contains many of the same features you'll find in much larger coaches such as an angled galley, a roomy cross-aisle bath and the **STOREMORE™** Hydraulic Slideout System.



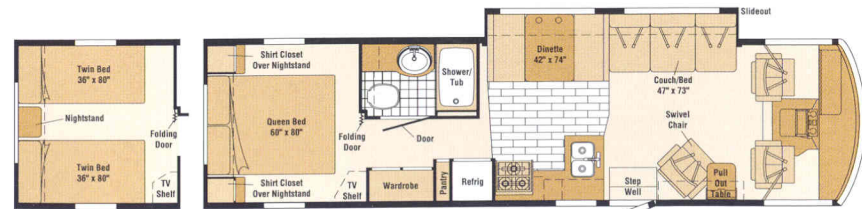
33V

This 33' wide-body slide includes a comfortable sofa/sleeper and an L-shaped galley with pantry. Our **STOREMORE™** Hydraulic Slideout System provides easier access to exterior storage compartments.



32T

This 32' wide-body includes a swivel chair with pull-out table in the living area, private bath with shower/tub and large wardrobe.



35C

The 35' wide-body offers a couch/bed in the living area and a pull-out table next to the swivel chair. Our **STOREMORE™** Hydraulic Slideout System provides easier access to exterior storage compartments.

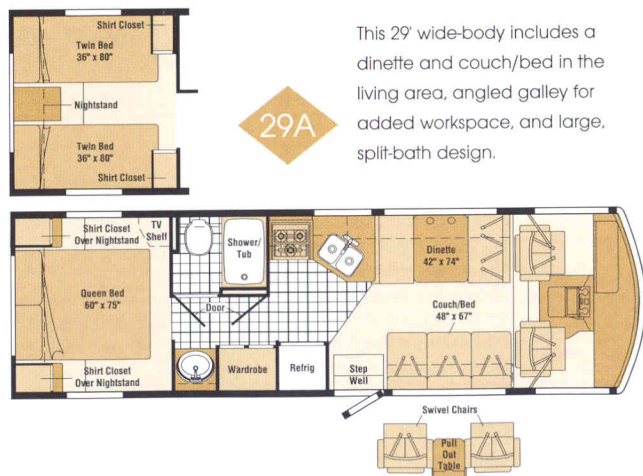
Both Sunrise and Sunrise SE are equipped with standard features like a ladder, aluminum bumper with end caps, trailer hitch and fresh water winterization system. For added comfort, dual-glazed, thermo-insulated tinted windows that reduce noise and light transmittal are available on Sunrise SE and standard equipment on Sunrise.



31B

-  Vinyl Floorcovering
-  Vinyl Woodgrain Plank Floorcovering
-  Seatbelts

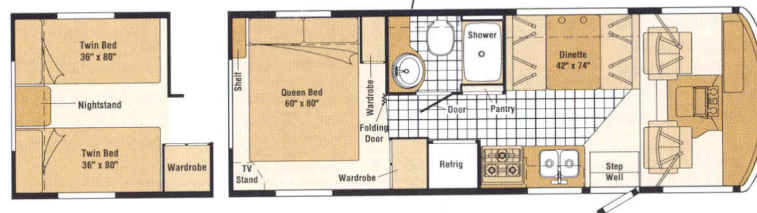
Note: Dimensions shown are for sleeping space only and dashed lines denote overhead storage areas.



29A

This 29' wide-body includes a dinette and couch/bed in the living area, angled galley for added workspace, and large, split-bath design.

Sunrise SE Floorplans



26P

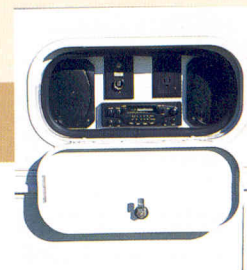
This 26' wide-body offers all the necessities, including full private bathroom, folding shower door and queen-size bed.



31B

This 31' wide-body includes a comfortable swivel chair in the living area, spacious split bath and large bedroom.

For your outdoor enjoyment, all Sunrise and Sunrise SE models can include an available exterior entertainment center complete with AM/FM cassette (or available CD), 12 volt power supply and a 110 volt outlet.



The standard awning rail does more than support the available awning. Its integrated gutter also serves to channel water to the front and rear of the motor home, away from the face of the awning.



The available Onan® MicroQuiet™ 4,000 generator is highly efficient and produces very little noise. 5,500 and 7,000 watt Onan Marquis Gold™ generators are available on select models.



2001 Sunrise Series Specifications

	SUNRISE SE			SUNRISE			
	26P	29A	31B	30W	32T	33V	35C
Length	26'5"	30'	31'11"	30'11"	32'6"	33'6"	35'3"
Exterior Height w/AC*	11'1"	11'4"	11'4"	11'11"	11'10"	11'11"	11'10"
Exterior Width^	8'5.5"	8'5.5"	8'5.5"	8'5.5"	8'5.5"	8'5.5"	8'5.5"
Exterior Storage	46 cu. ft.	112 cu. ft.	117 cu. ft.	92 cu. ft.	137 cu. ft.	103 cu. ft.	150 cu. ft.
Interior Height	6'8"	6'8"	6'8"	6'8"	6'8"	6'8"	6'8"
Interior Width	8'0.5"	8'0.5"	8'0.5"	8'0.5"	8'0.5"	8'0.5"	8'0.5"
Fresh Water Capacity w/Heater*	56 gal.	71 gal.	71 gal.	84 gal.	85 gal.	66 gal.	67 gal.
Holding Tank Capacity - Black/Gray	35/43 gal.	30/34 gal.	30/34 gal.	40/54 gal.	49/50 gal.	40/45 gal.	40/50 gal.
LP Capacity^	23 gal.	23 gal.	23 gal.	23 gal.	23 gal.	28 gal.	28 gal.
Fuel Capacity	40 gal.	75 gal.	75 gal.	75 gal.	75 gal.	75 gal.	75 gal.
GVWR - Standard/Option	12,300"/14,800 lbs.	15,000 lbs./NA	15,000 lbs./NA	18,000 lbs./NA	18,000 lbs./NA	18,000 lbs./NA	18,000 lbs./NA
Wheelbase	158.5"	178"	190"	190"	208"	200"	220"

AUTOMOTIVE/CHASSIS

	SUNRISE SE			SUNRISE			
	26P	29A	31B	30W	32T	33V	35C
Chassis - Workhorse® 7.4L Vortec V-8, 124 amp alternator, 4-wheel anti-lock brakes, 4L80E 4-speed overdrive transmission	\$	\$	\$	\$	\$	\$	\$
Chassis - Workhorse® 8.1L Vortec V-8, 130 amp alternator, 4-wheel anti-lock brakes, 4L80E 4-speed overdrive transmission	\$	\$	\$	\$	\$	\$	\$
Spare Tire, Tire Tools wrench & leverage bar, Trailer Hitch 5000# draw bar/350# maximum vertical tongue weight & wiring, Wheel Covers	\$	\$	\$	\$	\$	\$	\$
Front Shocks/Stabilizer Package	0	0	0	0	0	0	0
Hydraulic Leveling Jacks				\$	\$	\$	\$
Stainless Steel Wheel Liners	0	0	0	0	0	0	0

CAB AREA & DRIVER CONVENIENCES

	26P	29A	31B	30W	32T	33V	35C
Cab Seats w/Seat Belts 3-point shoulder & lap w/retractors, Carpeted Driver & Passenger Floor Mats, Cigarette Lighter/12 Volt Electrical Supply, Convenience Tray, Cruise Control, Domelight, Exterior Key Lock Hood Release, Intermittent Windshield Wipers, Map Pockets, Power Assist Steering w/Tilt Wheel, Sunvisors (2), Window (Driver & Passenger) full slider w/screen	\$	\$	\$	\$	\$	\$	\$
Cab Seats UltraLeather HP covered				0	0	0	0
Pull-out Workstation passenger side	0	0	0	0	0	0	0
Rearview Monitor System w/single camera & 1-way audio, Videoman	0	0	0	0	0	0	0

ENTERTAINMENT

	SUNRISE SE			SUNRISE			
	26P	29A	31B	30W	32T	33V	35C
19" AC Color TV* w/Remote & Video Selection System, Radio (Cab) AM/FM stereo cassette, Sony® roof-mounted flexible rubber antenna, speakers (4), Radio Power Switch main/auxiliary battery, Satellite System Ready, TV Enhancement Package antenna (amplified), 12 volt receptacle, interior jack(s), coax wiring, cable input, bedroom TV shelf or stand*	\$	\$	\$	\$	\$	\$	\$
Radio (Cab) AM/FM stereo CD, Sony	0	0	0	0	0	0	0
Exterior Entertainment Center w/Cassette or CD Player DC receptacle, AC duplex receptacle, AM/FM radio, TV jack, radio antenna, speakers (2), lockable compartment	0	0	0	0	0	0	0
Exterior Entertainment Center Table	0	0	0	0	0	0	0
VCR w/Remote	0	0	0	0	0	0	0

INTERIOR

	26P	29A	31B	30W	32T	33V	35C
Ceiling Lights incandescent w/wall switches, Day/Night Pleated Shades, Decorative Clock, Front Wraparound Curtain w/Track, Textured Fabric Ceiling, Wardrobe Cabinet carpeted floor, clothes rod	\$	\$	\$	\$	\$	\$	\$
Ceiling Lights fluorescent lights, recessed, galley & lounge areas				\$	\$	\$	\$
Cupholder(s)					\$	\$	\$
Decorative Picture(s)	\$	\$	\$	\$	\$	\$	\$
Decorative Wall Lamp				\$	\$	\$	\$
Dual-Glazed, Thermo-Insulated Windows	0	0	0	\$	\$	\$	\$
Nonpowered Roof Vent lounge	\$						
Reading Lights (2) couch overhead	\$	\$	\$	\$	\$	\$	\$

CABINETY

	SUNRISE SE			SUNRISE			
	26P	29A	31B	30W	32T	33V	35C
Portsmouth Oak Woodgrain stile-and-rail construction raised panel inserts (upper doors only)	\$	\$	\$	\$	\$	\$	\$

COUNTERTOPS

	26P	29A	31B	30W	32T	33V	35C
Laminate w/beveled wood edging (galley & dinette), Laminate w/wood-look T-mold edging (bath & bedroom)	\$	\$	\$	\$	\$	\$	\$

FLOORCOVERING

	26P	29A	31B	30W	32T	33V	35C
Carpeting w/Pad, Vinyl Floorcovering bath	\$	\$	\$	\$	\$	\$	\$
Vinyl Floorcovering galley	\$	\$	\$				
Vinyl Plank Floorcovering galley				\$	\$	\$	\$

FURNITURE

	26P	29A	31B	30W	32T	33V	35C
Couch w/throw pillow	\$	\$	\$	\$	\$	\$	\$
Dinette access to storage below	\$	\$	\$	\$	\$	\$	\$
Lounge Chair(s)	0	\$	0	\$	\$	\$	\$
Sofa/Sleeper w/throw pillow					\$		

GALLEY

	26P	29A	31B	30W	32T	33V	35C
Decorative Wall Border, Double Stainless Steel Sink sink cover (countertop material), Microwave Oven, Range 3-burner w/oven, Magic Chef, Range Hood w/Light & Fan, Refrigerator/Freezer double door, Single-control Faucet	\$	\$	\$	\$	\$	\$	\$
Range Top 3-burner w/storage below, Magic Chef					0	0	0
Coffeemaker	0	0	0	0	0	0	0
Countertop Flip-up Extension	\$					\$	\$

	SUNRISE SE			SUNRISE		
	26P	29A	31B	30W	32T	33V 35C
Nonpowered Roof Vent			S	S	S	S
Powered Ventilator Fan			0	0	0	0
Pantry	S			S		S
Wall Mirror			S			

BATH

	26P	29A	31B	30W	32T	33V	35C
3-Rod Towel Rack mounted to door,	S	S	S	S	S	S	S
Dual-control Lavatory Faucet, Lavatory Cabinet, Makeup Lights, Medicine Cabinet, Power Roof Vent, Shower Light, Skylight, Tissue Holder, Toilet w/Foot Pedal Flush							
Dual-control Shower Faucet w/Flexible Shower Head	S	S	S		S	S	S
Single-control Shower Faucet w/Fixed Shower Head				S			
Hamper					S		S
Linen Cabinet	S	S	S	S	S		S
Magazine Rack				S		S	
Oval Sink	S	S		S	S	S	S
Rectangular Sink			S				
Shower	S		S	S			
Shower Door folding	S	S	S		S	S	S
Shower Door textured glass				S			
Shower/Tub		S			S	S	S
Towel Bar	S	S	S	S			S
Towel Ring(s)	S	S		S	S	S	
Wall Mirror(s)	S		S		S	S	S

BEDROOM

	26P	29A	31B	30W	32T	33V	35C
Bedsread, Decorative Wall Lamp(s), Innerspring Queen-size Mattress Serta, Pillow Shams	S	S	S	S	S	S	S
Chair Rail				S	S	S	S
Decorative Wall Border	S	S	S				
Nonpowered Roof Vent*	S	S	S	S	S		
Twin Beds	0	0	0		0		0

EXTERIOR

	26P	29A	31B	30W	32T	33V	35C
AC Duplex Receptacle, Awning Rail w/rain gutter, Entrance Door main w/screen door, deadbolt lock, Ladder, Mirrors low mount, electric remote w/defrost, Porch Light w/interior switch, Rear Mudflaps, Sidewall Skin 1-piece fiberglass, smooth, Storage Compartments w/trunk liner, single paddle latch	S	S	S	S	S	S	S

	SUNRISE SE			SUNRISE		
	26P	29A	31B	30W	32T	33V 35C
Awning patio	0	0	0	0	0	0
Double-door Step electric w/door jamb switch				S	S	S
Single-door Step electric w/door jamb switch	S	S	S			
Undercoating	0	0	0	0	0	0

SYSTEMS

	26P	29A	31B	30W	32T	33V	35C
6 Gallon Electronic Ignition LP Gas Water Heater/Motoraid & Rear Auto Heater, Automatic Dual Battery Charge Control, Automotive Heater/Air Conditioner, Auxiliary Start Circuit, City Water Hookup, Coach Batteries (2) deep cycle, Coach Battery Disconnect System, Exterior Wash Station, Generator Prep Kit, Heated Holding Tank Compartment, LP Tank permanent mount w/gauge, Monitor Panel wall mount, battery condition gauge, generator hourmeter gauge*, generator start/stop switch*, holding tank levels, LP tank level, water heater light(s), water heater switch, water pump switch, water tank level, Sewer Hose, Water Heater Winterization Bypass Valve, Water Pump demand, Water System Winterizing Valve, Water Tank Drain, Water Tank Fill w/Locking Door	S	S	S	S	S	S	S
AC/DC Electrical Distribution System AC & DC breaker panels, 45 amp converter/charger				S	S	S	S
AC/DC Load Center/Converter Unit DC automotive style fuses, AC circuit breakers, 15 amp battery charger, 45 amp converter	S	S	S				
Furnace 30,000 BTU, Suburban® low profile	S	S					
Furnace 35,000 BTU, Suburban, low profile		S	S	S	S		
Furnace 40,000 BTU, Suburban, low profile						S	
Generator* 4,000 watt, Onan MicroQuiet, gas	0	0	0	0	0		
Generator* 5,500 watt, Onan Marquis Gold, gas		0	0	0	0	0	
Generator* 7,000 watt, Onan Marquis Gold, gas		0	0	0	0	0	
Holding Tank Flushing System black tank only					S		
Inverter* DC/AC, 130 watt	0	0	0	0	0	0	0
Roof Air Conditioners (2)* 13,500 BTU		0					
Roof Air Conditioner 14,800 BTU	S	S	S	S	S		
Roof Air Conditioners (2)* high efficiency w/POWERLINE Energy Management System		0	0	S	S		
Service Center (Drainage/Water) drainage valves, sewer hose, city water hookup/tank diverter fill (tank diverter fill 30W, 33V), Service Center (Electrical) cable input, power cord		S	S	S	S		

SLIDEOUT

	SUNRISE SE			SUNRISE		
	26P	29A	31B	30W	32T	33V 35C
Slideout Room (front driver side) slideroom cover (slideout section), STOREMORE				S	S	S

SAFETY

	26P	29A	31B	30W	32T	33V	35C
3-Point Cab Seat Belts, 10 B.C. Fire Extinguisher, Bumpers front & rear, Carbon Monoxide Detector/Alarm, Center High-mount Stop Lamp, Courtesy Light(s) w/Wall Switch(es), Escape Window, Ground Fault Interrupter, LPG Leak Detector/Alarm, Laminated Safety Glass Windshield, Lap Belts In Selected Areas, Smoke Detector/Alarm	S	S	S	S	S	S	S
Acrylic Exterior Assist Handle w/Logo, Interior Assist Bar/Handle				S	S	S	S
Exterior Assist Handle, Interior Assist Strap	S	S	S				

WARRANTY

	26P	29A	31B	30W	32T	33V	35C
12-Month/15,000-Mile Basic Warranty, 36-Month/36,000-Mile Warranty On Structure,** 10-Year Limited Parts & Labor Warranty On Roof	S	S	S	S	S	S	S

NA Not Available

- The height of each model is based on the curb weight of a typically equipped unit on the standard chassis. The actual height of your vehicle may vary by as much as 2" depending on chassis or equipment variations.
- ^ Sunrise and Sunrise SE floorplans feature a wide-body design — over 96". In making your purchase decision, you should be aware that some states restrict access on some or all state roads to 96" in body width. Before making your purchase decision, you should confirm the road usage laws in the states of interest to you.
- * Not all items available in combination. See dealer for details.
- ◇ Capacities shown are tank manufacturer's listed water capacity (W.C.). Actual filled LP capacity is 80% of listing due to overfilling prevention device on tank.
- ≈ Not available for registration in California.
- \$ Standard
- 0 Optional
- ~ Replaces standard 7.4L engine mid-year 2001 model year.
- ** See your dealer for complete warranty documentation information.

Winnebago Industries' continuing program of product improvement makes specifications, equipment, model availability and prices subject to change without notice. Comparisons to other motor homes are based on the most recent information available.

Sunrise Series

A Few More Details



WIT Club



Membership in the Winnebago Itasca Travelers (WIT) Club is a great way to meet people and get even more enjoyment from your motor home. As an owner of a Winnebago Industries RV, you can join the Club and take advantage of some great services — like professional travel planning and mail forwarding — and participate in some great rallies and caravans. Call 1-800-643-4892 ext. 1 for more information.

TripSaver

In recent RVDA surveys, Winnebago Industries has been voted number one in the industry for service, parts, and warranty support by dealers across the country. And who would know better than the people who service motor homes? We believe a large part of our service success is due to our commitment to getting you back on the road as soon as possible after experiencing a mechanical emergency. That's why we created TripSaver. This industry-leading program guarantees that qualifying, in-stock emergency warranty repair parts will be shipped directly from the factory within 24 hours. Furthermore, a Winnebago Industries built part or component that is not in stock will be specially manufactured and shipped air freight.



TRIP Saver
Emergency-Shipped Parts

Warranty Protection

All new Itasca motor homes include a 12-month/15,000-mile basic protection plan, 36-month/36,000-mile warranty protection on lamination and slideroom construction and assemblies, and a standard 10-year limited parts and labor warranty on the roof. As if those aren't enough, we also stand behind most major appliances and equipment we install (a rarity in the industry) so you can count on the convenience of one-stop service for warranty repairs. It all adds up to some of the most comprehensive warranty programs in the industry backed by the most recognized motor home manufacturer in the world.



Visit us at
www.winnebagoind.com

Read this guide.

To learn more about what separates our motor homes from others, ask for this free guide next time you visit your Winnebago Industries dealer. It explains our superior manufacturing process. Use it to learn more about important safety and quality considerations as you shop for the motor home that's best for you.



For Sales and Service Information Contact:



©2000 Winnebago Industries, Inc.

Printed in USA

Seat belts are your most important hookup. Always buckle up.