

*Sunrider*  
2002





As the most researched Itasca motor home Winnebago Industries has ever produced, Suncruiser is the embodiment of user-friendly form and function. Years of consumer research and input, as well as extensive field trials, have resulted in dozens of innovative designs and features that make RVing even more relaxing and enjoyable. You'll find the 2002 Suncruiser has added to its list of standard features, items such as a hoop-based recliner that can be easily repositioned when not traveling, dual-pane windows for improved thermal efficiency and the Rest Easy® Multi-Position Lounge.

Experience the 2002 Itasca Suncruiser. It's what RVing is meant to be.

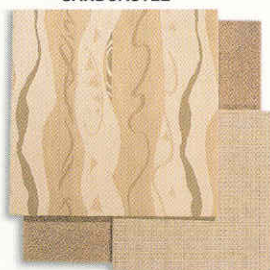


35U SANDCASTLE

RELAX WITH ALL OF THE COMFORTS OF HOME. Spaciousness, premium climate control, abundant storage and comfortable furnishings are all yours. Expand your interior space at the touch of a button with the **STOREMORE**® Slideout System. The **TRUEAIR**® residential air conditioning system offers improved airflow over bulky roof-mounted air conditioners and provides precision flow control with individual ceiling-mounted vents that can be adjusted for both direction and volume. Choose the available Home Comfort Plus Package and enjoy cozy warmth on a cool morning without starting the furnace. High-efficiency, dual-pane windows are standard for added comfort. The beautiful cabinetry is designed to maximize storage space and cabinet doors feature an attractive and highly-durable catalyzed finish usually reserved for premium home cabinetry. Day/night pleated shades allow you to select from several levels of privacy as you relax on the Flexsteel® and Stitchcraft custom furniture.

## INTERIOR DECORS

SANDCASTLE



ASPEN GLEN



MORNING GLORY



PORTSMOUTH OAK  
WOODGRAIN



*Suncruiser*  
2002





32V

**PREPARE A QUICK SNACK**, a full meal or hors d'oeuvres for guests. You're all set with this full-featured galley. It features a Magic Chef® three-burner range with oven, a large over-the-range microwave and a solid surface countertop with a handy flip-up extension. Clean-up is no problem with the single-control faucet with pull-out sprayer and the stain-resistant molded composite sink. Unlike many RV sinks, it's sized to easily accommodate dinner dishes.



**SUPPLIES ARE CLOSE AT HAND** with the large overhead cabinets and deep-well storage drawers. Select models include an additional slideout pantry. 4-inch pulls are included for easy opening. The large double-door refrigerator offers plenty of cold storage. Choose the available icemaker for added convenience.



32V

**NATURAL LIGHTING** from the overhead skylight accents the open, airy feeling of the bath area. Convenient standard amenities include a single-control shower faucet, residential-height toilet with foot-pedal flush, powered, roof-mounted fan and plentiful storage.



**YOU'LL LOVE THE FLEXIBILITY** of the hoop-base lounge chair. This cozy rocker is also a comfortable recliner with a footrest. And perhaps best of all, it can be easily positioned to your favorite spot when you're not traveling. Select the available UltraLeather HP™ for an added touch of luxury.

**WHEN YOU TAKE A CLOSER LOOK** at the 2002 Suncruiser, you'll notice that every feature seems to have a distinct and well-thought-out purpose. This superior functionality is the direct result of listening to customer feedback and searching out ways to improve even the smallest components, systems or details.



**THE AVAILABLE ACCESSORY PACKAGE** includes a rechargeable flashlight and a hand held vacuum cleaner which is conveniently stored in the galley area.



**THE WALL-MOUNTED HAIR DRYER**, located in the bathroom, also includes a night-light for added convenience.



**ENJOY A HOT CUP OF YOUR FAVORITE BREW** from the standard coffee maker. It's mounted below the cabinet to conserve counter space.



**DO YOUR LAUNDRY ANY TIME** with the combination washer/dryer available on the 37G.





Keep informed and entertained. Winnebago Industries engineers worked closely with the radio manufacturer to create the new **RV-RADIO™**, the first radio designed specifically for RVs. Suncruiser's AM/FM stereo radio has both a cassette and CD player for added versatility. Large control knobs and buttons are easy to operate. A built-in weather band feature provides weather updates at the touch of a button.



Keep your electrical system running smoothly even when operating your central air conditioning on

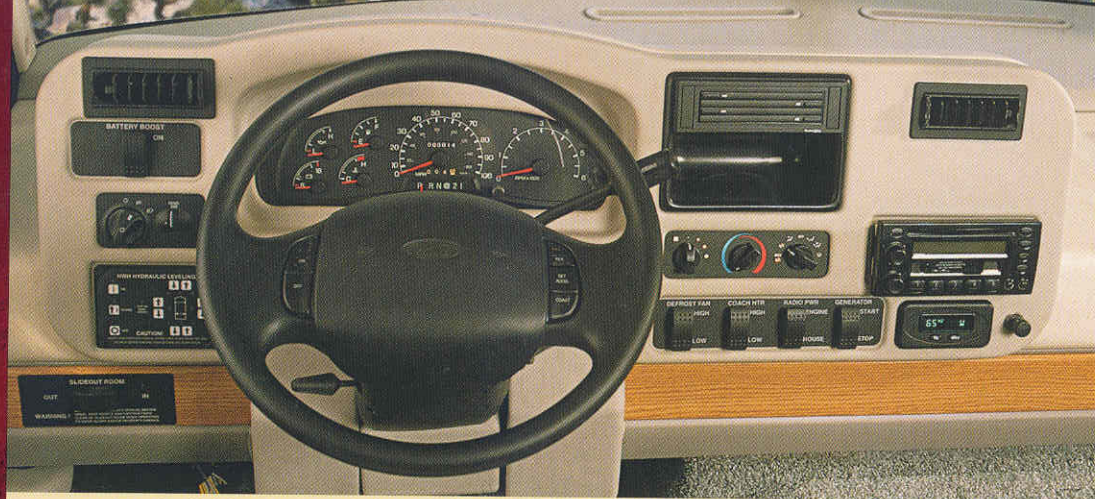
30 amp shoreline power. The **POWERLINE™** Energy Management System monitors onboard 110 volt electrical usage and automatically minimizes the nuisance of tripped campground circuits by controlling the operation of postponable electrical loads during periods of heavy usage. As demand is lowered, PowerLine automatically returns power to the secondary appliances and systems.



Eliminate the runaround with the **ONEPLACE™** Systems Center. It brings together frequently used switches, gauges and controls in one convenient location so you can easily check and operate important systems from one central location.



Adjust the volume to your satisfaction with individual speaker volume-control knobs. They're included below the overhead cabinet speakers that come with the standard sound package.



**DRIVER'S CONTROLS ARE CONVENIENTLY LOCATED** at your fingertips in the ergonomic cockpit area. The dash features large, easy-to-read switches and gauges that are sized for effortless operation. The standard dash-mounted electronic compass is a helpful navigation tool that even displays exterior temperature at the touch of a button. An available rearview monitor includes a one-way audio feature for safe backing and maneuvering.



**THE AVAILABLE DASH-MOUNTED WORKSTATION** provides a great space for using a laptop computer or writing letters. Sliding the workstation open brings the tabletop towards the passenger seat and provides access to the storage area below.



**ARRIVE REFRESHED** after a long drive thanks to the high-back premium Flexsteel cab seats. They incorporate multi-position armrests as well as swivel, slide and recline features so you can adjust them to the position that fits you best. Enhance your ride even further by selecting 6-way power pedestals, which are available for both the driver and passenger seats. Cab seats with the UltraLeather HP upgrade also include adjustable lumbar support.



**STAYING IN FOR THE EVENING?** Enjoy the variety of entertainment options starting with the standard 25" TV. You can also choose the available VCR, DVD player and digital satellite system to ensure that you'll never have to go without your favorite programs or movies. Enjoy the theatre-quality sound from the available Deluxe Sound System with QSurround™ 5.1 sound. This feature also includes the TV and VCR stereo upgrades. Select the available 300 watt inverter to enjoy these features even when you're not connected to shoreline or generator power.



**ENTER AND EXIT** from the cab area with ease thanks to the standard driver's door. The trim panel incorporates both an extra-deep cup holder and power window controls.





35U SANDCASTLE



35U SANDCASTLE

THE REAR SLIDEOUT creates a vast bedroom space with a walk-around queen-size bed, premium Serta® mattress and private changing area. Convenient storage begins with an elegant wardrobe providing plentiful closet space and continues with dual-bedside nightstands, spacious overhead cabinetry and underbed storage.

THE UNIQUE DESK/VANITY area, found on the 35U, is loaded with conveniences such as a large countertop with a tip-up storage area, tip-out hamper, sliding mirrors, an additional phone/modem jack and folding chair. Other residential bedroom features include a built-in 19" color TV, wardrobe, and an alarm clock.

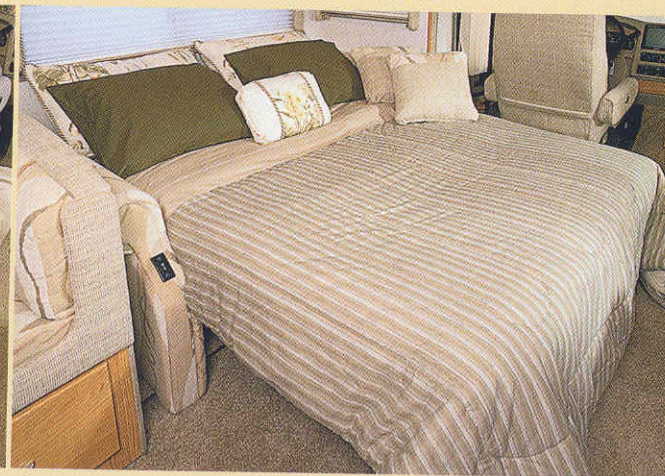
THE REST EASY MULTI-POSITION LOUNGE provides unmatched seating flexibility and comfort.



It starts as a plush couch with a convenient flip-down center cushion that doubles as a beverage tray with dual-drink holders and a storage area.



At the touch of a button it becomes a relaxing recliner with a pull-out ottoman.



Touch the button again and it's a contoured 75" x 60" bed.



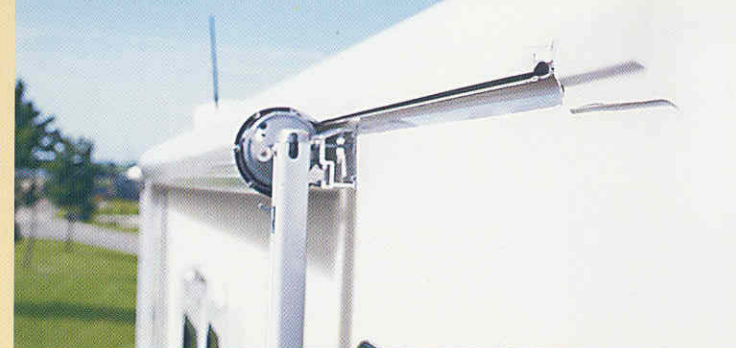
Winnebago Industries' exclusive **TRUEAIR™** residential central air conditioning applies superior cooling technology to provide optimum environmental control throughout the coach. At the heart of the system is a Coleman®-Mach® unit that provides two high-efficiency cooling circuits to accommodate even those hot days. The whole system is physically located below the coach floor, which provides a lower vehicle profile, reduces interior noise, improves serviceability, lowers the vehicle's center of gravity, and eliminates roof condensation and runoff.

Consistent airflow throughout the coach is the result of ductwork that is incorporated into the ceiling assembly. Specifically designed for each individual model, these ducts eliminate airflow restrictions that reduce efficiency. Airflow volume to specific areas within the coach can be easily changed to accommodate personal preferences with individual ceiling-mounted vents that adjust for both airflow and direction.

You'll enjoy improved interior air quality thanks to a residential-style filter that is much larger and easier to replace than foam pad filters used on most roof-mounted A/C units.



TRUEAIR'S CUSTOM-DESIGNED ELECTRONIC THERMOSTAT is easy to use and offers superior temperature control. You can also choose the available Home Comfort Plus Package which provides a convenient source of heat on cool mornings without starting the LP-fueled furnace.



BUILT-IN RAIN GUTTERS are incorporated into the awning rail to channel rainwater and condensation runoff away from the entrance door and windows.



ONE KEY OPENS MOST EVERYTHING thanks to the innovative KeyOne™ lock system. For added convenience, the key is double-bitted so it easily fits the lock no matter which way it is inserted.



AUXILIARY POWER IS PROVIDED by a quiet and efficient 5,500 watt or available 7,000 watt Onan® Marquis Gold™ generator.

ACCESS TO STORED GEAR IS ALWAYS CONVENIENT with the StoreMore Hydraulic Slideout System. StoreMore allows exterior compartments to extend with the slideroom for easy access. A Winnebago Industries original, it is still the industry's premier slideout system. StoreMore exterior compartments are also designed to accommodate large or odd-shaped items so you can bring along your golf clubs or even a folding ladder. Compartment doors incorporate single-paddle latches and gas struts for easy opening.







**ENTER AND EXIT WITH EASE.** A large interior assist bar and exterior assist handle provide stable hand-holds when entering or exiting.



**AN EXPANDED VIEW** is yours with the exterior mirrors. They feature larger flat and convex surfaces, and electric defrost for increased visibility and safety. Adjusting for individual driver preference is easy with the electric controls.



**SATELLITE READY.** Every SunCruiser comes prewired for the available digital satellite dish that can be installed now or added later.

## 2002 SUNCRUISER EXTERIORS



**LIGHT SILVER METALLIC**



**LIGHT EBONY METALLIC**

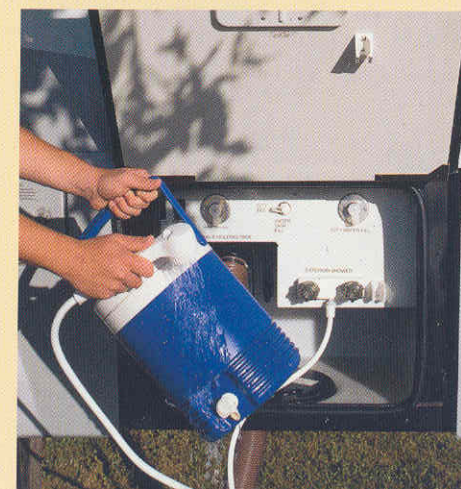
**BASIC MAINTENANCE IS AMAZINGLY SIMPLE ON YOUR SUNCRUISER.** A large hood opening makes routine service checks a breeze.



**AN EXTERIOR ENTERTAINMENT center** lets you listen to your favorite music as you enjoy the great outdoors. It includes two speakers, a 12 volt power supply, TV jack and a removable TV table. Choose from the standard AM/FM stereo with cassette or available CD.



**KEEP THE SAND AND MUD OUTSIDE** with the exterior wash station. The same heated compartment also houses the major plumbing connections and service points for added convenience.



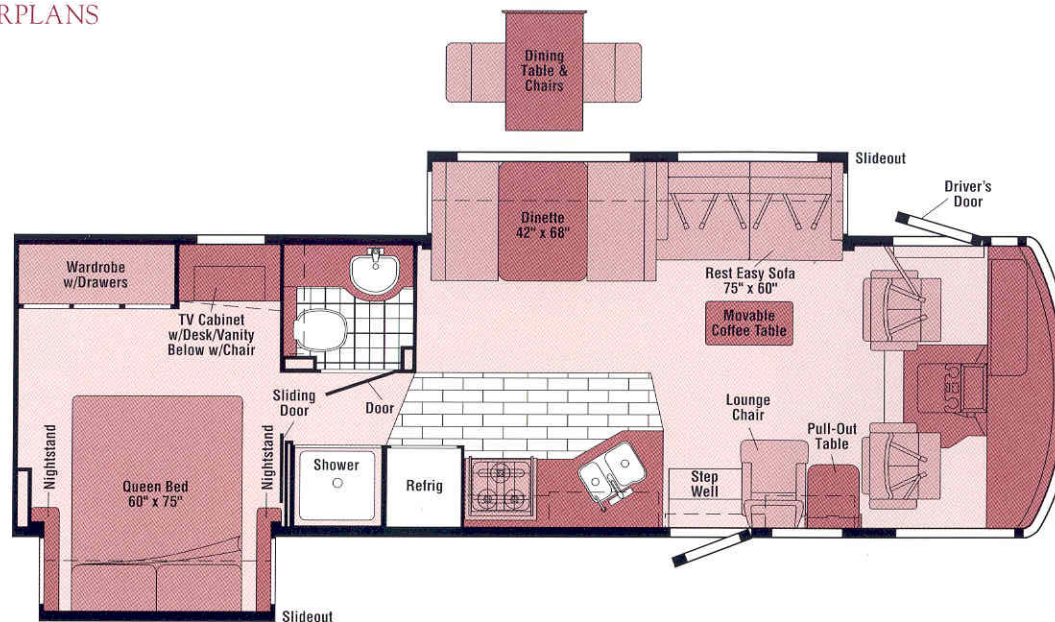


## 2002 SUNCRUISER FLOORPLANS

NEW

30Y

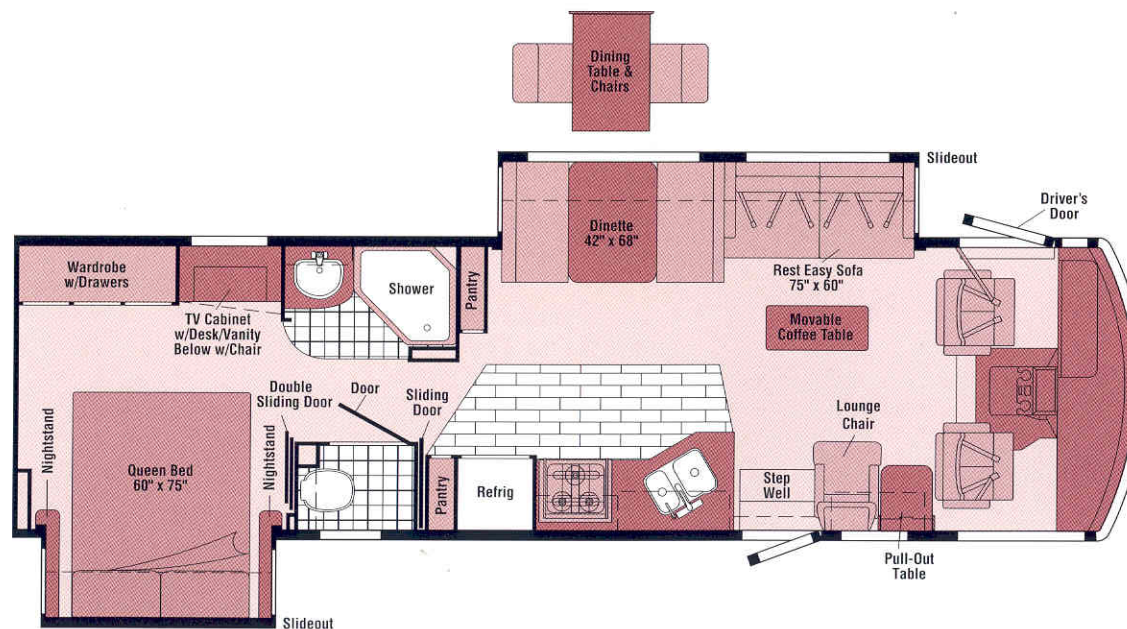
- Couch/Dinette **STOREMORE** Slideout System
- Rear Bedroom slideout w/ large wardrobe & desk/vanity area
- Movable hoop-base lounge chair
- Split-bath design
- **REST EASY** Multi-Position Lounge



NEW

32V

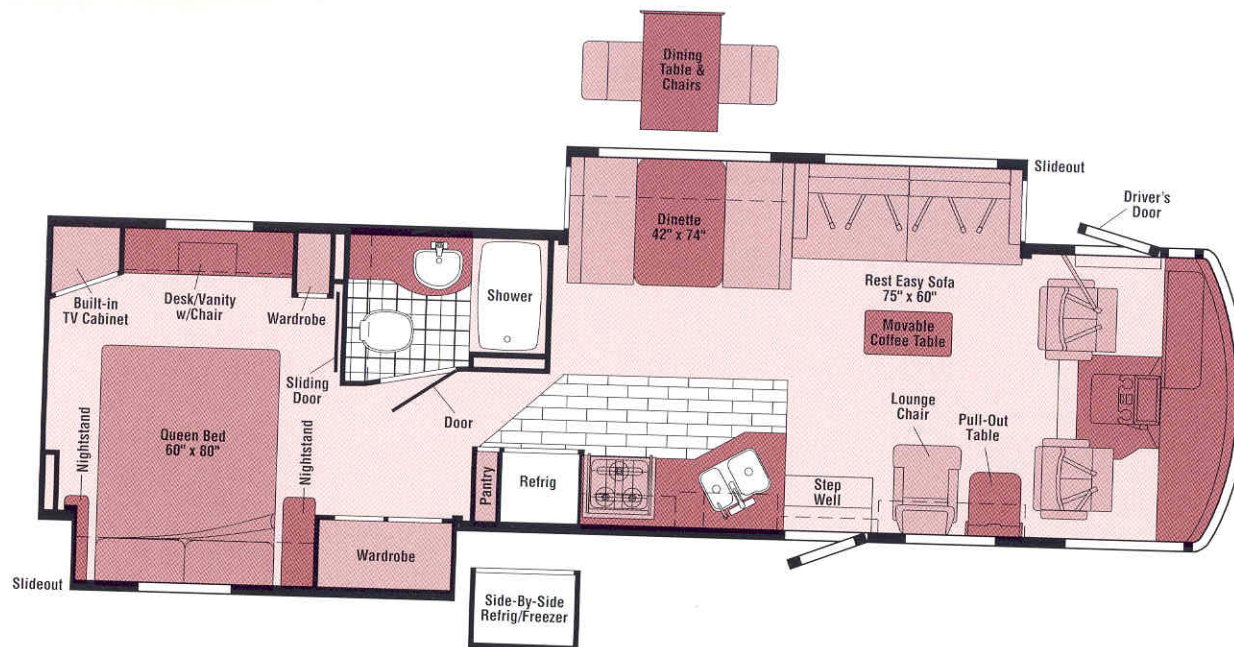
- Couch/Dinette **STOREMORE** Slideout System
- Rear Bedroom slideout w/ large wardrobe & desk/vanity area
- Split-bath w/ private toilet area
- Dual pull-out pantries in galley area
- **REST EASY** Multi-Position Lounge





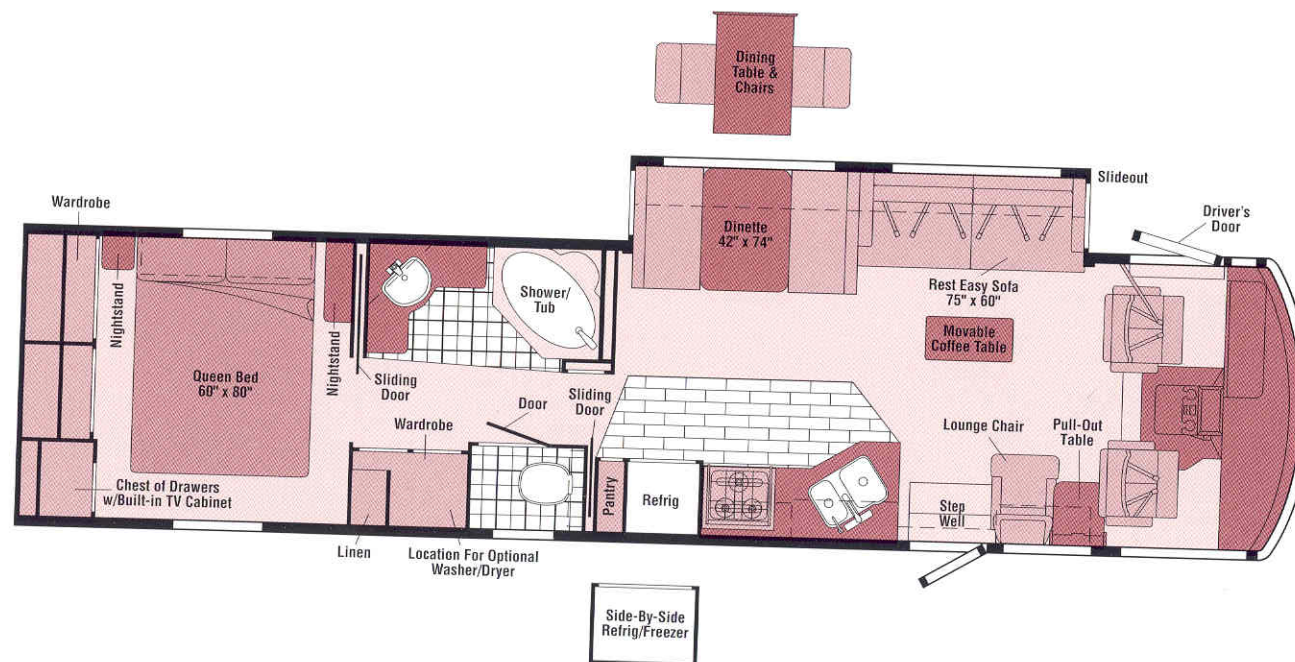
35U

- Couch/Dinette **STOREMORE** Slideout System
- Rear Bed/Wardrobe slideout
- Movable hoop-base lounge chair
- **REST EASY** Multi-Position Lounge



37G

- Couch/Dinette **STOREMORE** Slideout System
- Bedroom rear wall wardrobe w/chest of drawers and built-in TV cabinet
- Spacious split-bath area with tub/shower and private toilet area
- Available washer/dryer
- **REST EASY** Multi-Position Lounge



VINYL FLOORCOVERING



VINYL WOODGRAIN PLANK FLOORCOVERING



SEAT BELTS

Note: Dimensions shown are for sleeping space only and dashed lines denote overhead storage areas.



## WHERE STYLE MEETS

**FUNCTION.** SunCruiser comes equipped with HWH hydraulic leveling jacks, a one-piece fiberglass roof, stainless steel wheel liners, and a large hood opening for easy access. A patio awning is also available for outdoor comfort.



## 2002 SUNCRUISER SPECIFICATIONS

	30Y NEW	32V NEW	35U	37G
<b>Length</b>	30'11"	32'11"	34'11"	37'5"
<b>Exterior Height* - Ford/Workhorse</b>	11'9"/NA	11'8"/11'11"	11'9"/12'	11'8"/12'
<b>Exterior Width^</b>	8'5.5"	8'5.5"	8'5.5"	8'5.5"
<b>Exterior Storage (cu. ft.)</b>	46	54	90	103
<b>Interior Height</b>	6'8"	6'8"	6'8"	6'8"
<b>Interior Width</b>	8'0.5"	8'0.5"	8'0.5"	8'0.5"
<b>Fresh Water Capacity w/Heater* (gal.)</b>	90	90	90	90
<b>Holding Tank Capacity - Black/Gray (gal.)</b>	45/41	52/45	40/54	53/55
<b>LP Capacity^ (gal.)</b>	28	28	28	28
<b>Fuel Capacity - Ford &amp; Workhorse (gal.)</b>	75	75	75	75
<b>GCWR - Ford//Workhorse (lbs.)</b>	26,000//NA	26,000//26,000	26,000//26,000	26,000//26,000
<b>GVWR - Ford//Workhorse (lbs.)</b>	20,500//NA	20,500//20,700	20,500//22,000//20,700//22,000	22,000//22,000
<b>GAWR - Front, Ford//Workhorse (lbs.)</b>	7,000//NA	7,000//7,500	7,000//7,500//7,500//8,000	7,500//8,000
<b>GAWR - Rear, Ford//Workhorse (lbs.)</b>	13,500//NA	13,500//13,500	13,500//14,500//13,500//14,500	14,500//14,500
<b>Wheelbase</b>	190"	208"	228"	248"

### AUTOMOTIVE/CHASSIS

	30Y	32V	35U	37G
<b>Chassis</b> - Ford® 6.8L Super-Duty V-10 SOHC Triton™ engine, 310 hp, 4-speed overdrive transmission, 130 amp alternator, 4-wheel anti-lock brakes	S	S	S	S
<b>Chassis</b> - Workhorse® 8.1L Vortec V-8, 340 hp, Allison 1000 Series 5-speed overdrive transmission, 4-wheel anti-lock brakes, 145 amp alternator, <b>Trailer Hitch</b> + 5000# draw bar/500# maximum vertical tongue weight*	0	0	0	0
<b>Leveling Jacks</b> HWH hydraulic, manual touch pad w/indicator lights & chime, <b>Tire</b> spare, <b>Tire Tool</b> wrench, <b>Trailer Hitch</b> + 5000# draw bar/350# maximum vertical tongue weight* & wiring, <b>Wheel Liners</b> stainless steel	S	S	S	S

### CAB AREA & DRIVER CONVENIENCES

	30Y	32V	35U	37G
<b>Cab Seats</b> (fabric) w/3 point adjustable seat belts, armrests, multi-adjustable swivel/slide/recline, <b>Cab Sound Control Package</b> Ford®, <b>Cigarette Lighter/12 Volt Electrical Supply</b> , <b>Compass</b> electronic w/outdoor thermometer, <b>Convenience Tray</b> , <b>Cruise Control</b> , <b>Door</b> driver w/power window, assist bar,	S	S	S	S

### CAB AREA & DRIVER CONVENIENCES (CONT.)

	30Y	32V	35U	37G
exterior step, KeyOne™ (common key w/entrance door & exterior storage compartments), <b>Driver Door Trim Panel</b> w/beverage holder, power mirror controls, <b>Floor Mats</b> carpet driver & passenger, <b>Map Light</b> , <b>Shades</b> light filtering, cab windows, <b>Shelf</b> passenger side w/beverage holder, powerpoint, <b>Steering Wheel</b> tilt w/power assist, <b>Sunvisors (2)</b> , <b>Window</b> (passenger) full-slider w/screen, dual-glazed, <b>Windshield Wipers</b> intermittent	S	S	S	S
<b>Cab Seats</b> UltraLeather HP™ seating surface w/manual lumbar support	0	0	0	0
<b>Cab Seat Pedestal</b> 6-way power assist (driver)	0	0	0	0
<b>Cab Seat Pedestal</b> 6-way power assist (driver & passenger)	0	0	0	0
<b>Defroster Fans (2)</b> auxiliary 2-speed w/instrument panel switch	0	0	0	0
<b>Monitor System</b> rearview w/single camera & 1-way audio, Sony®	0	0	0	0
<b>Workstation</b> pull-out, passenger side	0	0	0	0

### ENTERTAINMENT

	30Y	32V	35U	37G
<b>CB Prep</b> (includes: antenna, antenna lead, 12 volt power supply), <b>Entertainment Center (Exterior) w/Cassette*</b> DC receptacle, AC duplex receptacle, AM/FM radio, exterior antenna jack, TV jack, radio antenna, speakers (2), lockable compartment, removable table, <b>RV-RADIO™ (Cab)</b> AM/FM stereo cassette/CD w/weather band, roof-mounted flexible rubber antenna, speakers (4), <b>Radio Power Switch</b> main/auxiliary battery, <b>Satellite System Ready</b> , <b>Telephone</b> input & interior jack(s), <b>TV 19" Color AC</b> w/remote, bedroom, <b>TV 25" Color AC</b> w/remote, <b>TV Enhancement Package</b> antenna (amplified), 12 volt powerpoint, interior jack(s), coax wiring, cable input, antenna check reminder light, <b>Video Selection System</b>	S	S	S	S
<b>Compact Multi-disc Changer</b> Sony®	0	0	0	0
<b>DVD*</b> (digital video disc) player	0	0	0	0
<b>Entertainment Center (Exterior) w/CD Player*</b>	0	0	0	0
<b>Satellite Dish Antenna</b> Winegard®, RV digital, elevation sensing unit	0	0	0	0
<b>Sound System</b> deluxe, w/QSurround™ TV 25" stereo color AC, stereo VCR, amplifier, cube speakers (5), sub-woofers (2)	0	0	0	0
<b>VCR*</b> w/remote	0	0	0	0

### INTERIOR

	30Y	32V	35U	37G
<b>Ceiling</b> textured fabric, <b>Clock</b> , <b>Curtain</b> front wraparound, pleated w/wands, <b>Lights</b> ceiling, incandescent w/wall switches, <b>Lights</b> fluorescent lights, recessed, galley, lounge w/wall switches, <b>Lights</b> reading, <b>Mirror</b> w/beveled edge, <b>Shades</b> day/night pleated, <b>Windows</b> dual-glazed/thermo-insulated	S	S	S	S
<b>Accessory Package</b> rechargeable flashlight, rechargeable vacuum cleaner	0	0	0	0
<b>Light</b> wall lamp (lounge area)		S	S	
<b>Picture</b>			S	

### CABINERY

	30Y	32V	35U	37G
<b>Woodgrain</b> Portsmouth Oak stile-and-rail construction w/arched raised panel inserts on upper doors & raised panel inserts on lower doors	S	S	S	S

### COUNTERTOPS

	30Y	32V	35U	37G
<b>Laminate</b> w/wood edge (dinette, bath, bedroom), <b>Solid Surface</b> galley	S	S	S	S



FLOORCOVERING	30Y	32V	35U	37G
<i>Carpeting</i> w/pad, <i>Vinyl</i> bath, <i>Vinyl Woodgrain Plank</i> galley	\$	\$	\$	\$

FURNITURE	30Y	32V	35U	37G
<i>Coffee Table</i> , <i>Flexsteel® Lounge Chair* (Fabric)</i> w/cabinet & table w/magazine rack, hoop-base, recliner, rocker, footrest, <i>REST EASY® Multi-Position Lounge (Fabric)</i> w/throw pillows & fold-down beverage holder, <i>Dinette</i> access to storage below w/slideout drawers	\$	\$	\$	\$
<i>Dining*</i> table & chairs (2) free standing, (2) folding	0	0	0	0
<i>Flexsteel® Lounge Chair (UltraLeather HP™)</i> hoop-base	0	0	0	0
<i>REST EASY® Multi-Position Lounge (UltraLeather HP™)</i> w/throw pillows	0	0	0	0

GALLEY	30Y	32V	35U	37G
<i>Coffeemaker</i> , <i>Countertop Flip-up Extension</i> , <i>Faucet</i> single-control w/pull-out sprayer, <i>Light</i> fluorescent, under cabinet, <i>Microwave Oven</i> Sharp® <i>Mirror</i> , <i>Range</i> three-burner w/large oven, glass door, recessed, sealed burners, Magic Chef® <i>Range Cover</i> , <i>Refrigerator/Freezer</i> large double-door, Norcold® <i>Roof Vent</i> powered ventilator fan, <i>Sink</i> double-bowl molded w/sink covers (countertop material), <i>Spice Rack</i> , <i>Wall Border</i> , <i>Wastepaper Basket</i> , <i>Water Purification System</i> w/separate faucet	\$	\$	\$	\$
<i>Microwave/Convection Oven</i> Sharp®	0	0	0	0
<i>Pantry</i> w/adjustable shelves (32V w/dual pantries)	\$	\$	\$	
<i>Range Top</i> three-burner w/storage below, recessed, sealed burners, Magic Chef®	0	0	0	0
<i>Refrigerator/Freezer</i> large double-door w/icemaker, Norcold®	0	0	0	0
<i>Refrigerator/Freezer</i> side-by-side w/icemaker, Dometic®*		0	0	

BATH	30Y	32V	35U	37G
<i>Cabinet</i> lavatory, <i>Cabinet</i> medicine, <i>Faucet</i> (lavatory) single-control, <i>Faucet</i> (shower) single-control w/fixed shower head, <i>Hair Dryer</i> wall-mounted w/night-light, <i>Light</i> shower, <i>Lights</i> makeup, <i>Roof Vent</i> power, <i>Shower Skylight</i> , <i>Sink</i> oval, <i>Tissue Holder</i> , <i>Toilet (Porcelain)</i> w/foot-pedal flush, <i>Towel Rack</i> 3-rod, mounted to door	\$	\$	\$	\$
<i>Chair Rail</i>	\$			
<i>Magazine Rack</i>	\$	\$	\$	
<i>Mirrors (2)</i> w/beveled edges			\$	
<i>Robe Hook</i>	\$			
<i>Shower</i>	\$	\$		
<i>Shower</i> w/removable clothes rod			\$	
<i>Shower/Tub</i>			\$	
<i>Shower Door</i> folding			\$	
<i>Shower Door</i> textured glass	\$	\$	\$	
<i>Shower Head</i> hand held	0		0	
<i>Shower Package</i> hand held shower head, fold-down bath shower seat	0	0		
<i>Towel Bar</i>	\$	\$	\$	

BATH (CONT.)	30Y	32V	35U	37G
<i>Towel Ring(s)</i>	\$	\$	\$	

BEDROOM	30Y	32V	35U	37G
<i>Alarm Clock</i> , <i>Bed</i> queen, Serta® innerspring mattress, w/underbed storage, <i>Bedspring</i> pillows, throw pillow, <i>Ceiling Molding</i> , <i>Lights</i> decorative wall lamps (2), <i>Nightstands (2)</i> , <i>Powerpoint</i> 12 volt DC receptacle(s), <i>Wainscoting</i> w/chair rail, <i>Wardrobe Cabinet</i> carpeted floor, clothes rod, drawers (30Y, 32V), light, shelves (37G)	\$	\$	\$	\$
<i>Hamper</i> tip-out			\$	
<i>Headboard</i>	\$	\$		
<i>Mirror</i> backwall w/wood frame	\$	\$	\$	
<i>Vanity Cabinet</i> w/fold-up countertop, folding chair, sliding mirrors over window (35U only)	\$	\$	\$	

EXTERIOR	30Y	32V	35U	37G
<i>Awning*</i> patio, <i>Awning Rails</i> w/rain gutters, <i>Door</i> entrance w/separate screen door, deadbolt lock, <i>Door</i> fuel-fill, locking, <i>Entrance Door Steps</i> double, electric w/doorjamb switch, <i>Exterior Graphics Packages</i> Light Ebony Metallic recommended w/Sand Castle, Aspen Glen or Morning Glory, Or Light Silver Metallic recommended w/Sand Castle, Aspen Glen or Morning Glory, <i>Ladder</i> , <i>Light</i> porch light w/interior switch, <i>Light</i> service center, <i>Mirrors</i> electric remote w/defrost, <i>Mudflaps</i> rear, <i>Receptacle</i> AC duplex, <i>Sidewall Skin</i> one-piece smooth fiberglass, high-gloss, <i>Storage Compartments</i> smooth valance panels, trunk liner, gas struts, Tri/Mark KeyOne™ System, paddle latch, lights	\$	\$	\$	\$
<i>Awning*</i> patio, electric	0	0	0	0
<i>Undercoating</i> Workhorse™ only	0	0	0	

SYSTEMS	30Y	32V	35U	37G
<i>Automotive Heater/Air Conditioner</i> , <i>Auxiliary Start Circuit</i> , <i>Batteries (Coach)</i> (2) deep cycle, <i>Battery (Coach)</i> disconnect system, <i>Battery Charge Control</i> automatic dual, <i>Drain 1"</i> water tank, <i>Electrical Distribution System</i> AC & DC breaker panels, 45 amp converter/charger, <i>Generator</i> 5,500 watt, Onan® Marquis Gold™ gas, <i>Generator/Shoreline Automatic Changeover Switch</i> , <b>ONEPLACE™</b> Systems Center wall-mounted, battery – digital voltmeter, energy management display, generator hourmeter gauge, generator start/stop switch, holding tank levels, LP tank level, solar panel/battery charger light, water heater switch & lights, water pump switch, water tank level, <i>Power Cord</i> 30 amp, <b>POWERLINE™</b> <i>Energy Management System</i> , <i>Service Center (Drainage/Water)</i> city water hookup/tank diverter fill, drainage valves, exterior wash station w/pump switch*, sewer hose, <i>Service Center (Electrical)</i> cable input, power cord, telephone input, <i>Sewer Hose</i> 10', <i>Solar Panel</i> 10 watt w/battery charger, <i>Tank</i> flushing system, black tank only, <i>Tank</i> holding, heated compartment, <i>Tank</i> LP, permanent mount w/gauge, <b>TRUEAIR®</b> <i>Central Air Conditioning System</i> , <i>Water Heater</i> 10 gallon electronic ignition, 120 vac/LP gas w/Motoraid, <i>Water Heater Winterization Bypass Valve</i> manual, <i>Wash Station</i> exterior, <i>Water Pump</i> demand,	\$	\$	\$	\$

SYSTEMS (CONT.)	30Y	32V	35U	37G
<i>Water System Winterizing Valve</i> manual, <i>Water Tank Fill</i> gravity, <i>Water Tank Fill</i> pressurized city hookup w/diverter valve, <i>Water Tank Fill</i> w/locking door	\$	\$	\$	\$
<i>Furnace</i> 35,000 BTU, low profile	\$	\$		
<i>Furnace</i> 40,000 BTU, low profile			\$	\$
<i>Generator</i> 7,000 watt, Onan® Marquis Gold™ gas	0	0	0	0
<i>Home Comfort Plus Package</i> central air heat pump, auxiliary automotive heater, insulated powered ventilator fans (bath & galley)	0	0	0	0
<i>Inverter*</i> DC/AC, 300 watt	0	0	0	0
<i>Power Cord</i> 50 amp	0	0	0	0
<i>Washer/Dryer Combination</i>			0	
<i>Washer/Dryer Prep</i>			\$	

SLIDEOUT	30Y	32V	35U	37G
<i>Slideout Room</i> (couch/dinette), w/slideroom cover, <b>STOREMORE®</b>	\$	\$	\$	\$
<i>Slideout Room</i> (bed 30Y, 32V & bed/wardrobe 35U)	\$	\$	\$	

SAFETY	30Y	32V	35U	37G
<i>Assist Bar</i> interior, <i>Assist Handle</i> exterior, acrylic w/logo, <i>Bumpers</i> front & rear, <i>Detectors/Alarms</i> LP leak, smoke, carbon monoxide, <i>Fire Extinguisher</i> 10 B.C., <i>Ground Fault Interrupter</i> , <i>Light</i> center high-mount stop lamp, <i>Light</i> courtesy w/wall switch, <i>Lights</i> daytime running lamps, Ford® <i>Window</i> escape, <i>Windshield</i> laminated safety glass	\$	\$	\$	\$

WARRANTY	30Y	32V	35U	37G
<i>12-month/15,000-mile basic limited warranty</i> , <i>36-month/36,000-mile warranty on structure,**</i> <i>10-year limited parts &amp; labor warranty on roof</i>	\$	\$	\$	\$

- The height of each model is based on the curb weight of a typically equipped unit on the standard chassis. The actual height of your vehicle may vary by as much as 2" depending on chassis or equipment variations.
- ^ Suncruiser floorplans feature a wide-body design — over 96". In making your purchase decision, you should be aware that some states restrict access on some or all state roads to 96" in body width. Before making your purchase decision, you should confirm the road usage laws in the states of interest to you.
- \* Not all items available in combination. See dealer for details.
- ◇ Capacities shown are tank manufacturer's listed water capacity (W.C.). Actual filled LP capacity is 80% of listing due to overfilling prevention device on tank.
- NA Not Available
- S Standard
- O Optional
- + Actual towing capacity is dependent on your particular loading and towing circumstances which includes the GVWR, GAWR and GCWR as well as adequate trailer brakes. Please refer to your vehicle's operator's manual for further towing information.
- \*\* See your dealer for complete warranty documentation information.

Winnebago Industries' continuing program of product improvement makes specifications, equipment, model availability and prices subject to change without notice. Comparisons to other motor homes are based on the most recent information available.



**NOT ALL MOTOR HOMES ARE CREATED EQUAL**, and as you take a closer look, you'll see that there is much more to an Itasca Suncruiser than a long list of standard features and compelling floorplans. Beneath it all, you'll find a SuperStructure foundation of strength

**SUPER  
STRUCTURE**

is the term given to Winnebago Industries' structural motor home design and construction. Rather than a single component, it is the culmination of design integration that incorporates steel and aluminum substructures, composite design laminated floor risers, interlocking joint technology and Thermo-Panel® floor, roof and sidewalls to form a high-strength, durable vehicle body.

**LAMINATED RISERS** feature a welded aluminum core for superior strength and provide a stable base for the floor structure and storage compartments.

**THE FOUNDATION SUBSTRUCTURE** assembly is precision-aligned to maximize longitudinal and cross-coach support, as well as strength and durability.

**WINDSHIELDS ARE MOUNTED IN STEEL**

with non-hardening sealants for superior strength, safety and durability. Some manufacturers actually use a rubber gasket to hold the windshields to a fiberglass cap.

**THE ALL STEEL CAB** features integral A and B pillars for added strength and stability.

**A STEEL BARRIER** separates occupants from the engine compartment. Believe it or not, less advanced designs actually use wood in this critical application.

**INTERLOCKING JOINT CONSTRUCTION** is superior to simple fastener attachment processes favored by competitive models because it provides increased body strength and helps to disperse road stresses and the weight of the roof and sidewalls evenly throughout the structure.

**STORAGE COMPARTMENTS** attach to outrigger assemblies so that the weight of stowed items is carried and dispersed throughout the foundation substructure.

**CRITICAL STEEL COMPONENTS** are treated using an advanced electro-deposition coating process that provides superior corrosion protection.

**COMMITTED TO SERVICE.** We back our motor homes with the best service after the sale in the industry.



**TRIP Saver**  
Emergency Shipped Parts

- 12-month/15,000-mile basic limited warranty
- 36-month/36,000-mile warranty on structure
- Standard 10-year limited parts and labor roof warranty
- Complimentary 24-hour roadside assistance program
- TripSaver emergency warranty parts shipments
- National dealer service network



**RECOGNIZED QUALITY.** Recreation Vehicle Dealer Association members annually rate RV manufacturers on the quality of their products, sales and service support. Winnebago Industries has achieved the coveted Quality Circle award every year since its inception, the only major motor home manufacturer to do so.



**ALL MOTOR HOMES ARE NOT CREATED EQUAL.**

Learn more about what sets Winnebago Industries apart. Ask your dealer for this guide. It will help you learn what makes Winnebago Industries motor homes distinctly superior to other brands.

**WARNING: JOINING WIT HAS BEEN KNOWN TO CAUSE EXCESSIVE FUN.**



Winnebago-Itasca Travelers (WIT) is a club for owners of Winnebago Industries motor homes. WIT is a great way to meet people and offers you:

- Caravans and rallies
- Local and state group activities
- Benefits for RVers

[www.winnebagoind.com](http://www.winnebagoind.com)

For Sales and Service Information Contact:

1-YEAR OLD ITASCA FIBERGLASS ROOF



1-YEAR OLD COMPETITOR'S RUBBER ROOF



**BUILT TO A HIGHER STANDARD.**

Suncruiser features a one-piece fiberglass roof backed with a 10-year limited parts and labor warranty. Fiberglass offers superior strength, attractiveness and durability over rubber roofs found on many competitive models. Over time, rubber roofs are susceptible to chalking, streaking, and degradation, and have less puncture and tear resistance than fiberglass.



©2001 Winnebago Industries, Inc.



Printed in USA

Seat belts are your most important hookup. Always buckle up.