

2003 Winnebago Brave®



BRAVE

Superb value and design put this Winnebago classic at the top of the A list.



Bed and breakfast.

The newly designed BenchMark full comfort dinette features innerspring seat construction for residential-style and comfort. Flip up the seats for easy access to large storage areas. BenchMark also quickly converts into a comfortable bed.



Now you're cooking.

The Brave's galley comes equipped with a three-burner Magic Chef® range/oven, and a 24" microwave oven with range fan. A solid-surface countertop and pantry storage are standard. The molded sink is not only good to look at, it's stain resistant, too. The single-control faucet includes a cold water purification system.



Smart dash.

One of the first things you'll notice when sitting behind the wheel is that the controls, switches and gauges are all sized and positioned for easy operation. The available rearview monitor system includes one-way audio for safe backing and maneuvering. The dash even flips up for ease of service and quick access.

You have the power.

PowerLine® helps you manage it. This silent, fully automated energy management system monitors electrical usage and cycles appliances off if demand exceeds available supply and cycles them on again once the power load is reduced. It also allows you to run two roof air conditioners on a 30-amp. shoreline circuit without worrying about system overload. (Standard on 32V, 34D and 36M; available on 30W.)



This radio's a wow.

Our engineers worked closely with the radio manufacturer to create the RV Radio designed specifically for RV use. It includes an AM/FM stereo cassette/CD player with a built-in weather band for immediate weather updates at the touch of a button. Its large control knobs and buttons are easy to operate.



The key to it all.

Brave makes use of the KeyOne™ System. Just one double-bitted key, which can be inserted in either direction, opens most doors and storage compartments. What could be simpler?



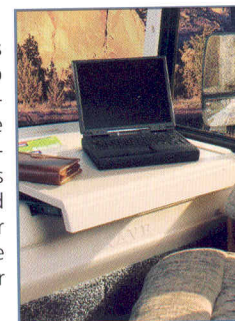
Well-designed bath areas.

The spacious bath is designed with you in mind. There is plenty of storage space along with standard features that make you feel more at home, including the Motoraid feature that utilizes engine heat to create a supply of warm water without starting up the water heater. Choose the available 110-volt/LP water

heater in place of the standard LP-only system for added flexibility.

Write place.

Write letters, play cards or work on your laptop computer with the available passenger-side workstation. The passenger seat features adjustable armrests, and reclines and swivels for your comfort. Adjustable lumbar support and/or leather is available.



Sit back. Relax.

It's a couch! It's a recliner! It's a bed! It's all three! It's the Rest Easy™ Multi-Position Lounge. At the touch of a button, it goes from a couch to a recliner with pull-out ottoman. Touch the button again and it's a 60" x 75" bed. (Available on 32V, 34D and 36M.)





36M-Sagebrush

Make this incredible motor home your own.

Winnebago quality, floorplan variety and innovative features set this Class A motor home apart. The 2003 Brave is chock-full of upscale standard amenities like solid-surface countertops, BenchMark™ full comfort dinette, StoreMore® slideout system, automatic generator changeover switch and a driver's entry door.

Enjoy the freedom of floorplan flexibility in choosing your new Brave. Available features like the dining table with four chairs; dual-glazed, thermo-insulated windows; dash-mounted workstation; and 50-amp. electrical service let you tailor your Brave to perfectly fit your lifestyle.

Sweet dreams.

The rear slideroom creates a spacious bedroom area with walk-around queen bed and Serta® mattress. A large wardrobe with mirrored doors and lower drawers provides more than ample storage, as does the under-bed area. The corner desk/vanity and chair give you a quiet place to write a letter or get ready for a night out.



36M-Sagebrush



32V-Sand Frost

Room to roam.

In addition to the spaciousness provided by the front StoreMore slideroom, three Brave models feature rear bedroom slides with large wardrobes and chest of drawers. Cabinet doors feature the beauty and added protection of a catalyzed finish typically found in the cabinetry of finer homes. Enjoy the comfort of the custom Stitchcraft furniture as you relax after a day of travel or exploring. The hoop-base swivel glider is easily repositioned to your favorite spot when you're not traveling.

There is also plenty of lighting placed right where you need it, all controlled via large, easy-to-operate wall switches. Ceiling-ducted air conditioning delivers precise cooling and improved airflow throughout the coach. An available heat pump takes away the early morning chill without turning on the furnace. The available dual-pane, thermo-insulated windows add even more efficiency and are covered with attractive day/night pleated shades.

Enjoy the view.

And it's a great one; whether you're watching your favorite program or movie on the large 25" TV and available VCR, or just relaxing inside your coach, you are sure to be happy with your choice.

And speaking of choices, with the video selection system you can easily select cable, movie or satellite input. There's even an available 300-watt inverter that provides 110-volt power to the TV and VCR when shoreline or generator power is not available. The Brave is also digital satellite system ready. You can choose the feature now or add it later.

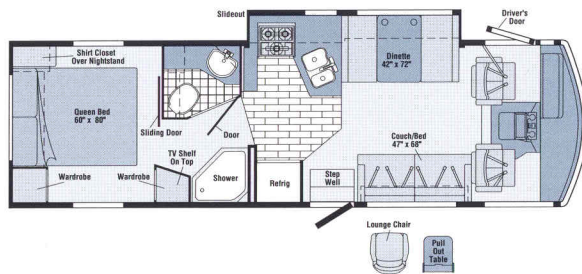


It's great outside.

Brave's one-piece fiberglass sidewalls are amazingly tough—typical for Winnebago Industries' design. Standard exterior features include stainless steel wheel liners that resist corrosion over the long haul, and hydraulic jacks for added stability when parked. Also available: a patio awning for instant shade.*

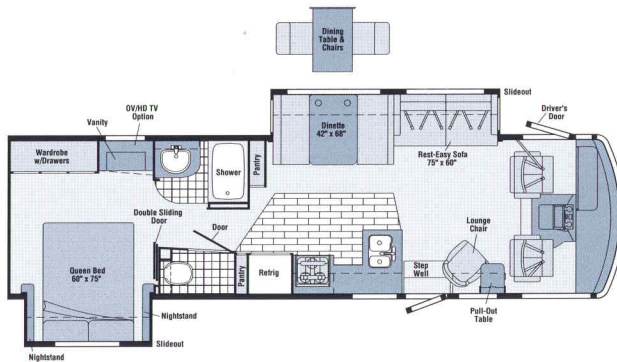
FLOORPLANS

INTERIORS



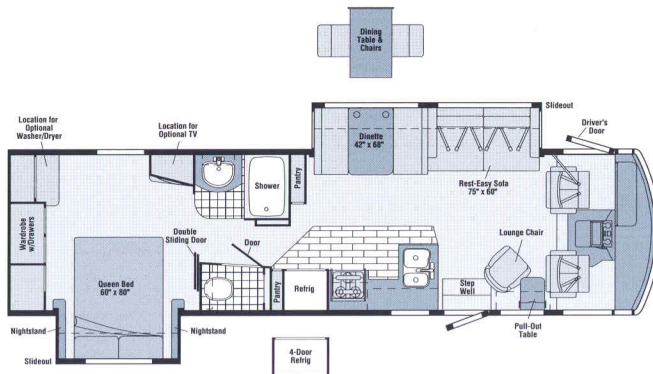
30W

- Dinette/galley **STOREMORE** slideout system
- Private bath with large shower
- Available hoop-base swivel/glider lounge chair with pull-out table



32V

- Dinette/couch **STOREMORE** slideout system
- Bedroom slideout with large wardrobe and desk/vanity area
- Split bath design with private toilet area
- Dual pull-out pantries
- Hoop-base swivel/glider lounge chair
-  Multi-Position Lounge

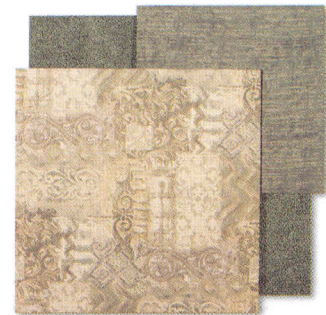


34D

- Dinette/couch **STOREMORE** slideout system
- Bedroom slideout with rear-wall large wardrobe
- Available washer/dryer
- Hoop-base swivel/glider lounge chair
-  Multi-Position Lounge




Blue Cameo

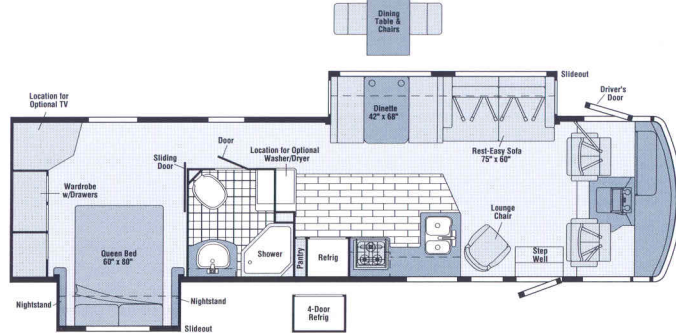


Sagebrush



36M

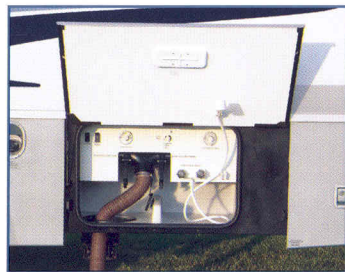
- Dinette/couch **STOREMORE** slideout system
- Bedroom slideout with rear-wall large wardrobe
- Unique side-aisle floorplan
- Large private bath area with space for available washer/dryer
- Hoop-base swivel/glider lounge chair
-  Multi-Position Lounge



Note: Dimensions shown are for sleeping space only and may vary due to styling differences. Dashed lines denote overhead storage areas.



Portsmouth Oak Woodgrain



Outside convenience.

Conveniently rinse off sand and dirt before heading indoors with the exterior wash station. For ease of access it is located in the water service center along with other frequently used plumbing features.



Bye-bye drips.

We don't overlook even the smallest detail: Brave's innovative built-in rain gutter funnels water away from the entrance door and windows to help keep your coach looking clean and streak free.



Everything is A-O.K.

Quickly check vital functions at a glance with Brave's conveniently located flush-mounted monitor panel.



Sound idea.

Brave's available exterior entertainment center includes an AM/FM stereo with antenna, a cassette or CD player, 12-volt DC receptacle, TV jack, 110-volt outlet and speakers. Compartment locks securely.

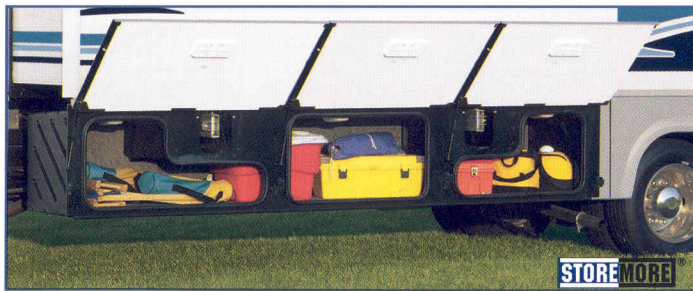


Light Silver M



More power to you.

Standard generator offerings include a 4,000-watt Onan® MicroQuiet™ on the 30W and a 5,500-watt Onan Marquis Gold™ on 32V, 34D and 36M. A 7,000-watt Onan Marquis Gold is also available on all models. An automatic changeover switch is also standard so there's no need to switch the power cord connection to run the generator.



Store more, with StoreMore.

With the StoreMore slideout system, exterior compartments extend along with the slideout, thus making it easier to retrieve stored items. There's plenty of room here for large or oddly shaped items. Storage compartments feature doors with one-piece aluminum exterior panels for superior strength and durability. They also incorporate single-paddle latches and gas struts for easy opening.



Easy in. Easy out.

Whether you're setting up at a campground or making a quick stop at a convenience store, the easy-to-grab exterior assist handle and extra-large interior assist bar help you get in and out with ease.



Opal Blue M

DuPont® Imron® FlexShield™ basecoat/clearcoat is maintenance, high-gloss finish with maximum durability and chip resistance.

2003 Winnebago Brave® Specifications

	30W	32V	34D	36M
Length	30'10.9"	32'11.4"	34'4.9"	35'10.8"
Exterior Height w/A/C* – Ford/Workhorse	11'10"/12'†	11'11"/11'11"	11'10"/12'2"†	11'10"/12'11"
Exterior WidthΔ	8'5.5"	8'5.5"	8'5.5"	8'5.5"
Exterior StorageS – Ford/Workhorse (cu. ft.)	72†/72†	78.6/74.8	91.1/91.1	120.3/120.3
Interior Height	6'8"	6'8"	6'8"	6'8"
Interior Width	8'0.5"	8'0.5"	8'0.5"	8'0.5"
Fresh Water Cap. w/Heater* – Ford/Workhorse (gal.)	84/84	86/64	86/86	76/76
Holding Tank Capacity – Black/Gray (gal.)	40/54	50/45	50/45	40/67
LP Cap.◊ (gal.)	23	28	28	28
Fuel Cap. – Ford/Workhorse (gal.)	75/75	75/75	75/75	75/75
GCWR – Ford/Workhorse (lbs.)	26,000/21,000	26,000/21,000	26,000/26,000	26,000/26,000
GVWR – Ford/Workhorse (lbs.)	18,000/18,000	20,500/18,000	20,500/20,700	20,500+/22,000#/20,700
GAWR – Front, Ford/Workhorse (lbs.)	7,000/6,000	7,000/6,000	7,000/7,500	7,000+/7,500#/7,500
GAWR – Rear, Ford/Workhorse (lbs.)	11,000/12,000	13,500/12,000	13,500/13,500	13,500+/14,500#/13,500
Wheelbase – Ford/Workhorse	190"/190"	208"/208"	220"/220"	228"/228"

Standard - S Optional - O

30W 32V 34D 36M

30W 32V 34D 36M

AUTOMOTIVE/CHASSIS

Chassis – Ford® 6.8L SOHC Triton™ V10 310-hp, 4-speed overdrive transmission, 4-wheel anti-lock brake system, 130-amp. alternator	O	O	S	S
Chassis – Workhorse 8.1L Vortec V8 340-hp, 4L85E 4-speed overdrive transmission, 4-wheel anti-lock brakes, 145-amp. alternator	S	S		
Chassis – Workhorse 8.1L Vortec V8 340-hp, Allison® LCT 1000 5-speed overdrive transmission, 4-wheel anti-lock brakes, 145-amp. alternator			O	O
Leveling Jacks hydraulic, manual joystick, Tire spare, Tire Tool wrench, Trailer Hitch □ 5,000-lb. drawbar/350-lb. maximum vertical tongue weight & wiring, Wheel Liners stainless steel	S	S	S	S
Stabilizer Package front shocks (Workhorse™ only)	O	O		

CAB AREA & DRIVER CONVENIENCES

Cab Seats w/3-point adjustable seat belts, armrests, multi-adjustable swivel/slide/recline, fabric covered, Cigarette Lighter/12-Volt Powerpoint, Convenience Tray, Cruise Control, Door (driver) entry, assist bar, courtesy light, Floor Mats carpet driver & passenger, Map Light, Steering Wheel tilt w/power assist, Sunvisors (2), Trim Panels driver & passenger sides, Window (driver) power, Window (passenger) full-slider w/screen, Windshield Wipers intermittent	S	S	S	S
Cab Seats (Stitchcraft) leather insert w/vinyl surround, w/manual adjustable lumbar support	O	O	O	O
Cab Seats Pedestal 6-way power assist (driver)	O	O	O	O
Defroster Fans (2) auxiliary 2-speed w/instrument panel switch	O	O	O	O
Monitor System rearview w/single camera & 1-way audio, Sony®	O	O	O	O
Workstation in dash	O	O	O	O

ENTERTAINMENT

AM/FM (Cab) AM/FM stereo cassette/CD player & weather band, speakers (4), Radio Power Switch main/auxiliary battery, Satellite System Ready, Telephone input & interior jack, TV 25" Color AC w/remote, video selection system, TV Enhancement Package antenna (amplified), 12-volt powerpoint, interior jack(s), coax wiring, cable input, antenna check reminder light, TV shelf	S	S	S	S
--	---	---	---	---

BATH

Cabinet lavatory, Cabinet medicine, Faucet (shower) single-control w/fixed showerhead, Faucet (lavatory) dual-control, Light shower, Lights makeup, Shower w/wall surround, Shower Skylight, Sink oval, Tissue Holder, Toilet porcelain, w/foot-pedal flush & sprayer, Towel Rack 3-rod, mounted to door, Towel Ring(s)	S	S	S	S
Cabinet linen w/adjustable shelves	S			
Magazine Rack	S			
Mirror				S
Shower w/removable clothes rod		S	S	
Shower Door folding		S	S	
Shower Door textured glass	S			S
Showerhead hand-held, Shower Seat fold-down	O	O	O	O
Wall Border private toilet area	S	S		

BEDROOM

Bed queen, Serta, innerspring, w/underbed storage, Bedspread pillow shams, pillows, Ceiling Molding, Lights decorative wall lamps, Nightstand(s), Wall Border, Wardrobe Cabinet carpeted floor, clothes rod, drawers, light	S	S	S	S
Corner Desk w/folding chair				S
Mirror		S		
Roof Vent* nonpowered, bedroom	S			
Shirt Closet	S			
Vanity Cabinet w/folding chair		S		

EXTERIOR

Awning Rails w/rain gutters, Door entrance w/separate screen door, deadbolt lock, Entrance Door Steps double, electric w/doorjamb switch, Graphics Packages Opal Blue Metallic recommended w/Sand Frost & Blue Cameo or Light Silver Metallic recommended w/Sand Frost, Sage Brush & Blue Cameo, Ladder, Light porch light w/interior switch, Mirrors electric remote w/defrost, convex, Mudflaps rear, Receptacle AC duplex, Sidewall Skin	S	S	S	S
---	---	---	---	---

CB Prep includes: antenna, antenna lead, 12-volt powerpoint	0	0	0	0
Entertainment Center (Exterior) w/Cassette or CD Player DC receptacle, AC duplex receptacle, AM/FM radio, TV jack, radio antenna, speakers (2), lockable compartment, removable table	0	0	0	0
Satellite Dish Antenna Winegard®, RV digital, elevation sensing unit	0	0	0	0
TV 19" Color AC w/remote, bedroom	0	0	0	0
VCR w/remote	0	0	0	0

INTERIOR

Ceiling fabric, Clock, Cupholder(s), Curtain front wraparound w/track, Lights ceiling, incandescent w/wall switches, Lights fluorescent lights, recessed, galley, lounge w/wall switches, Lights reading, Picture, Shades day/night pleated (lounge, dinette, bedroom), mini blinds (galley), Windows	\$	\$	\$	\$
Light decorative dining light		\$	\$	\$
Magazine Rack end of galley by lounge chair				\$
Mirror		\$	\$	
Windows dual-glazed/thermo-insulated	0	0	0	0

CABINETRY

Woodgrain Portsmouth Oak stile-and-rail construction w/raised panel inserts on upper doors	\$	\$	\$	\$
---	----	----	----	----

COUNTERTOPS

Solid Surface galley	\$	\$	\$	\$
-----------------------------	----	----	----	----

FLOORCOVERING

Carpeting w/pad, Vinyl bath, Vinyl Wood Plank galley	\$	\$	\$	\$
---	----	----	----	----

FURNITURE

Dinette (Benchmark) w/access to storage below	\$	\$	\$	\$
Rest-Easy® Multi-Position Lounge (Stitchcraft) w/throw pillow	\$	\$	\$	
Couch (Stitchcraft) w/throw pillow	\$			
Lounge Chair (Stitchcraft) swivel/glider hoop-base				\$
Lounge Chair (Stitchcraft) swivel/glider hoop-base w/fold-up table	0	\$	\$	
Dining Table w/extendable pull-up leaf & chairs, (2) free-standing & (2) folding	0	0	0	0

GALLEY

Faucet single-control, Microwave Oven w/range fan, Range three-burner w/oven, Magic Chef, Range Cover, Refrigerator/Freezer large double-door, Sink double-bowl molded w/sink cover, Wall Border, Wastepaper Basket, Water Purification System cold water only	\$	\$	\$	\$
Coffemaker	0	0	0	0
Countertop flip-up extension		\$	\$	\$
Pantry w/adjustable shelves	\$		\$	
Pantry (2) slideout cabinet w/adjustable shelves		\$	\$	
Range Top three-burner w/storage below, Magic Chef	0	0	0	0
Refrigerator/Freezer* 4-door w/icemaker			0	0
Refrigerator/Freezer* large double-door w/icemaker			0	0

one-piece smooth fiberglass, Storage Compartments valance panels, trunk liner, gas cylinders, Tri/Mark® KeyOne system, paddle latch, lights	0	0	0	0
Awning* patio		0	0	0
Undercoating Workhorse		0	0	0

SYSTEMS

Automotive Heater/Air Conditioner, Auxiliary Start Circuit, Batteries (Coach) (2) deep cycle, Battery (Coach) disconnect system, Battery Charge Control automatic dual, Drain 1" water tank, Electrical Distribution System AC & DC breaker panels, 45-amp. converter/charger, Generator/Shoreline Automatic Changeover Switch, Monitor Panel wall-mounted, battery condition gauge, generator hourmeter gauge, generator start/stop switch, holding tank levels, LP tank level, water heater switch & lights, water pump switch, water tank level, Powerpoint 12-volt, Roof Vent* nonpowered, galley, Roof Vent powered, bath, Service Center (Drainage/Water) city water hookup/tank diverter fill, drainage valves, exterior wash station w/pump switch*, sewer hose, Service Center (Electrical) cable input, 30-amp. power cord, Sewer Hose 10', Tank flushing system, black tank only, Tank holding, heated compartment, Tank LP, permanent mount w/gauge, Water Heater 6-gallon electronic ignition w/Motoraid & auto heater, Water Heater Winterization Bypass Valve manual, Water Pump demand, Water System Winterizing Valve manual, Water Tank Fill gravity*	\$	\$	\$	\$
Air Conditioner (Roof) 14,800 BTU		\$		
Air Conditioners (Roof) (2)* high-efficiency w/energy management system	0	\$	\$	\$
Furnace 35,000 BTU, low profile		\$	\$	
Furnace 40,000 BTU, low profile			\$	\$
Generator* 4,000 watt, Onan MicroQuiet, gas		\$		
Generator* 5,500 watt, Onan Marquis Gold, gas	0	\$	\$	\$
Generator* 7,000 watt, Onan Marquis Gold, gas	0	0	0	0
Heat Pump(s)*	0	0	0	0
Inverter* DC/AC, 300 watt	0	0	0	0
Power Cord 50-amp.		0	0	0
Roof Vent powered ventilator fan*, galley	0	0	0	0
Solar Panel 10 watt w/battery charger	0	0	0	0
Water Heater 6-gallon electronic ignition, 120 vac/LP gas w/Motoraid & auto heater	0	0	0	0
Washer/Dryer Combination		0	0	
Washer/Dryer Prep		\$	\$	

SLIDEOUT

Slideout Room bed		\$	\$	\$
Slideout Room couch/dinette, w/slideroom cover, STOR:MORE®		\$	\$	\$
Slideout Room dinette/galley, w/slideroom cover, STOR:MORE®		\$		

SAFETY

Assist Bar interior, Assist Handle exterior, Bumpers front & rear, Detectors/Alarms LP leak, smoke, carbon monoxide, Fire Extinguisher 10 B.C., Ground Fault Interrupter, Light center high-mount brake lamp, Light courtesy w/wall switch, Lights* daytime running lamps, Window escape, Windshield laminated safety glass	\$	\$	\$	\$
---	----	----	----	----

WARRANTY

12-month/15,000-mile basic limited warranty,		\$	\$	\$	\$
36-month/36,000-mile warranty on structure,**					
10-year limited parts & labor warranty on roof skin					

* The height of each model is based on the curb weight of a typically equipped unit on the standard chassis. The actual height of your vehicle may vary by as much as 2" depending on chassis or equipment variations.

§ Your motor home's load capacity is designated by weight, not by volume, so you cannot necessarily use all available space when loading your motor home. †Standard Ford Chassis ‡Optional Ford Chassis

Δ Brave floorplans feature a widebody design—over 96" In making your purchase decision, you should be aware that some states restrict access on some or all state roads to 96" in body width. Before making your purchase decision, you should confirm the road usage laws in the states of interest to you. *Not all items available in combination. See dealer for details.

◇ Capacities shown are tank manufacturer's listed water capacity (W.C.). Actual filled LP capacity is 80% of listing due to overfilling prevention device on tank. ** See your dealer for complete warranty information.

□ Actual towing capacity is dependent on your particular loading and towing circumstances which includes the GVWR, GAWR & GCWR as well as adequate trailer brakes. Please refer to your vehicle's operator's manual for further towing information. †Measurements are based on the most recent information available. See your dealer for updated specifications.

Winnebago Industries' continuing program of product improvement makes specifications, equipment, model availability and prices subject to change without notice. Comparisons to other motor homes are based on the most recent information available.

Not all motor homes are created equal.

As you take a closer look, you'll see that there is much more to the Winnebago Brave than a long list of standard features and compelling floorplans. Beneath it all you'll find a SuperStructure™ foundation of strength and durability, and Winnebago Industries' recognized service and warranty support.



We are committed to service.

We back our motor homes with the best after-the-sale service in the industry.

- 12-month/15,000-mile basic limited warranty
- 36-month/36,000-mile warranty on structure
- Standard 10-year limited parts-and-labor roof skin warranty
- Complimentary 24-hour Roadside Assistance Program
- TripSaver Fast Track Parts. TripSaver guarantees that in-stock warranty parts ship directly to your dealer within 24 hours
- Nationwide Dealer service network



Certified quality.

Recreation Vehicle Dealer Association members annually rate RV manufacturers on the quality of their products, and on their sales and service support. Winnebago Industries has achieved the coveted Quality Circle Award every year since its inception, the only major motor home manufacturer to do so.



Learn more about what sets Winnebago Industries apart.

Ask your dealer for this guide. It will help you learn what makes Winnebago Industries motor homes distinctly superior to other brands.

Warning: Joining WIT has been known to cause excessive fun.

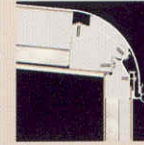
Winnebago-Itasca Travelers (WIT) is a club for owners of Winnebago Industries motor homes. WIT is a great way to meet people and offers you:

- Caravans and rallies
- Local and state group activities
- Benefits for RVers

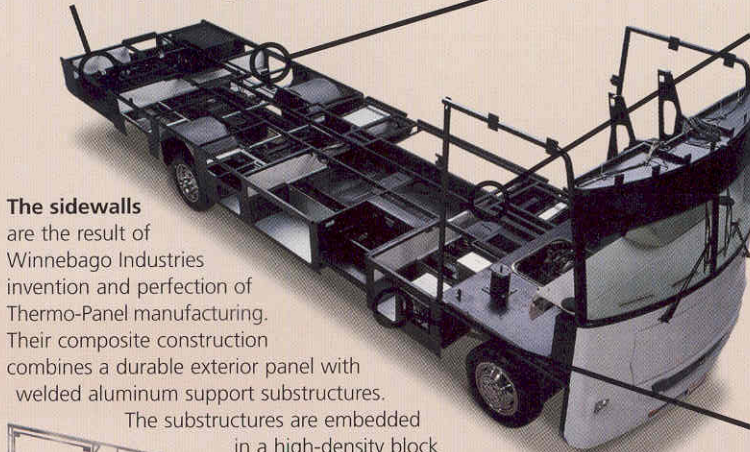


is the term given to Winnebago Industries' structural motor home design and construction. Rather than a single component, it is the culmination of design integration that incorporates steel and aluminum substructures, composite design laminated floor risers, interlocking joint technology, and Thermo-Panel® floor, roof and sidewalls to form a high-strength, durable vehicle body.

Interlocking joint construction utilizes advanced extruded aluminum structural components to create integrated floor-to-sidewall, and sidewall-to-roof joints. This design effectively distributes the weight of the walls and roof, making a stronger and more durable body than competitor designs that rely on screws to carry the weight.



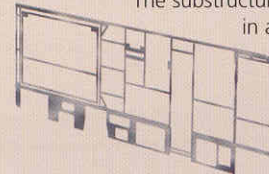
Laminated risers feature a welded aluminum core for superior strength and provide a stable base for the floor structure and storage compartments.



The foundation substructure assembly is precision-aligned to maximize strength and cross-coach support as well as durability.

The sidewalls are the result of Winnebago Industries invention and perfection of Thermo-Panel manufacturing. Their composite construction combines a durable exterior panel with welded aluminum support substructures.

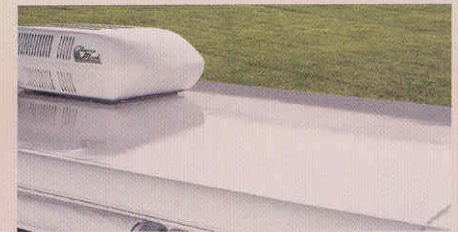
The substructures are embedded in a high-density block foam insulation core to create a strong, durable, yet lightweight sidewall.



Critical steel components are treated using an advanced electro-deposition coating process that provides superior corrosion protection.



One-year-old competitor's rubber roof



One-year-old Winnebago Industries fiberglass roof

Built to a higher standard.

Brave features a crowned, one-piece fiberglass roof backed with a 10-year limited parts-and-labor roof skin warranty. Fiberglass offers superior strength, attractiveness and durability over rubber roofs found on many competitive models. Over time, rubber roofs are susceptible to chalking, streaking and degradation, and have less puncture and tear resistance than fiberglass.



©2002 Winnebago Industries, Inc., Forest City, IA 50436. Printed in USA.

Seat belts are your most important hookup. Always buckle up.
Visit us at www.winnebagoind.com