

Horizon

2003



When you are ready for a premium diesel pusher motor home, look no further than the 2003 Itasca Horizon. It sets the standard for performance and comfort that today's diesel enthusiasts demand. Starting with a proven Freightliner® chassis designed exclusively for diesel pusher motor homes, the Horizon features a powerful 330-hp Caterpillar® turbo-charged engine (300-hp Cummins on 32TD), advanced air suspension, and an Allison® 3000 MH 6-speed electronic transmission for incredibly responsive ride and handling, and plenty of hill-climbing power. Premium residential features such as TrueAir™, PowerLine™, OnePlace™ and the RV Radio™ make it easy to call the 2003 Itasca Horizon your home on the road.



39WD HARVEST TAPESTRY

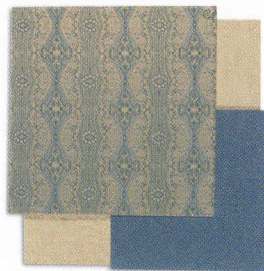
THE ITASCA HORIZON IS THE PERFECT PLACE TO RELAX OR SHARE TIME WITH FRIENDS. The StoreMore® slideout system not only expands your living space, it also allows interior overhead cabinets to extend with the slideroom. This increases storage capacity without impeding on headroom. Enjoy superior climate control with TrueAir™ Residential Central Air Conditioning. Fully adjustable vents located in the ceiling let you control airflow throughout the coach. A heat pump is standard to help warm your Horizon on cool mornings without using the furnace. For increased thermal efficiency, dual-glazed windows are standard. Three woodgrain choices give your coach a custom look and a catalyzed topcoat process keeps the cabinets looking great for years. Plus, day/night pleated shades let you choose your level of light and privacy.



Residential-style innerspring cushion seats make the BenchMark™ Full Comfort Dinette our most comfortable dinette ever. The seats flip up for easy access to the large storage space below and quickly convert into a comfortable bed.

INTERIOR DECORS

PROVENCE BLUE



HARVEST TAPESTRY



CARRARA CREAM



PORTSMOUTH OAK WOODGRAIN



CONCERT CHERRY WOODGRAIN



WASHED MAPLE WOODGRAIN





YOU'LL FEEL RIGHT AT HOME WITH HORIZON'S USER-FRIENDLY FEATURES. The galley includes solid-surface countertops and a 30" residential microwave/convection oven with a cook sensor feature that automatically selects the power level and cooking time to help you prepare the perfect meal every time. The G.E. Advantium™ Speedcook oven is also available. The Swanstone™ double-bowl sink accommodates large pots and pans and its solid-surface easily wipes clean. The sink also includes a Moen® single-control faucet with pull-out sprayer. A separate faucet provides water from an Everpure® water purification system.



A DOUBLE-DOOR REFRIGERATOR with an icemaker and a convenient slideout pantry come standard. A four-door refrigerator (shown) is also available. Select the available 1,500 watt inverter/charger and you can even make ice when you're on the road.



THIS ELEGANT DINING TABLE is standard on most models (NA 32TD). It's a perfect setting for two people and can easily expand to accommodate four.



THIS HOOP-BASE LOUNGE CHAIR is a comfortable swivel/rocker/recliner with the added bonus of a footrest. Best of all, it can easily be moved to your favorite spot when you're not traveling.



THE AVAILABLE COMBINATION WASHER/DRYER features multiple wash, time and temperature cycles to accommodate most fabrics (NA 32TD).



IF YOU LIKE EVEN MORE FLEXIBILITY with your living space, choose the multi-function table. It provides dining for two, expands to seat four and is ideal as a computer workstation or hobby area. (Available on the 36LD, 39QD and 39WD).



WHETHER YOU'RE SETTling IN FOR THE EVENING OR ENTERTAINING GUESTS, the Horizon surrounds you in comfort and convenience. Stitchcraft and Flexsteel® furniture invite you to stretch out and relax. It can be covered with the available, soft UltraLeather HP™ for added luxury. Watch videos on the 25" TV and VCR, or expand your options with the available digital satellite dish or the available DVD player. The experience is further enhanced when you choose the available 5-channel QSURROUND™ sound system. A standard 300 watt inverter or the available 1,500 watt inverter/charger with remote panel allows you to watch the front and bedroom TVs without needing shoreline or generator power.



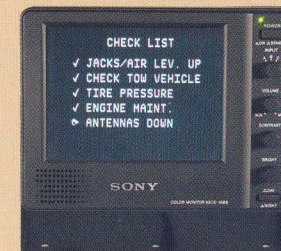
THE REST EASY™ MULTI-POSITION LOUNGE provides unmatched seating flexibility and comfort (NA 32TD). 1. It starts as a plush couch with a convenient flip-down center cushion that doubles as a beverage tray with dual drink holders and a storage area. 2. At the touch of a button, it becomes a relaxing recliner with a pull-out ottoman. 3. Touch the button again and it's a contoured 75" x 60" bed.



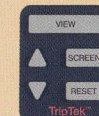
SINK INTO THE COMFORT of the high-back driver and passenger cab seats. Both chairs swivel and recline, and feature lumbar support, making them perfect for a long day on the road. Popular upgrades include UltraLeather HP (shown) and six-way power seat pedestals. A powered stepwell cover panel creates a convenient, flat floor at the touch of a button.



TOTAL CONTROL. It's the feeling you get behind the wheel of the Horizon. Controls are strategically positioned for easy operation. These include the electronic transmission touch pad and the mirror controls that are located on the driver's trim panel for quick access. The steering wheel conforms to fit you perfectly with both tilt and telescoping adjustments. The dash includes an electronic compass with outdoor thermometer and a Sony® rearview color monitor with one-way audio for easier backing and maneuvering. Power sunvisors help block the sun and a front privacy curtain comes with a convenient pull cord.



COLLECT, ANALYZE AND SAVE vehicle data with the available TripTek™ computer. Information displayed on your rearview monitor includes: distance to destination, time to destination, distance traveled, time traveled, fuel economy and a handy pre-trip checklist.





THE CEILING FAN that is available in the bedroom features adjustable speed control for your comfort. (NA 39QD, 39WD)



THE HORIZON IS LOADED with user-friendly conveniences such as the rechargeable flashlight and hand-held vacuum accessory package.



THE BATH AREA meets your needs with style. Upscale amenities include solid-surface countertops, a private toilet area (NA 32TD) and a wall-mounted hair dryer with night-light. The one-piece fiberglass shower includes a hand-held showerhead. A shower seat is also available.



YOU'LL ENJOY THE ROOMY DESIGN OF THE BEDROOM. The rear slideout allows for a large wardrobe and a walk-around, queen-size bed. There's even a lavatory sink with cabinetry in the 39WD bedroom. Windows on both sides of the room provide excellent cross-ventilation while you watch the 19" TV, which tucks away in its own cabinet when not in use.

SLEEP NUMBER® The bedroom features a queen-size Sleep Number Bed by Select Comfort.™ Using the hand-held remote on each side of the bed, you can quickly and independently adjust the mattress firmness level to your ideal level of comfort and support...your SLEEP NUMBER®, which is The Key to a Perfect Night's Sleep!™



ITASCA OWNERS ARE RAVING about the RV Radio. Bigger buttons, more features and a



larger display make it one of our most talked-about innovations. AM/FM stereo, cassette deck and CD player are all included. There's even a built-in weather band to keep you informed of travel conditions when you're on the road.



ENJOY PRECISION CLIMATE CONTROL thanks to Winnebago Industries'® exclusive TrueAir Residential Central Air Conditioning. TrueAir utilizes superior cooling technology to supply optimum environmental control throughout the coach. At the heart of the system is a Coleman®-Mach® cooling unit. It is

located in the basement to provide a lower vehicle profile while reducing noise and eliminating roof run-off from A/C related condensation. You'll also find that this location is much easier to service and provides a lower center of gravity than less-advanced roof pod air conditioning units. On cool days, the standard TrueAir heat pump warms the coach, minimizing the need to use LP.

POWERLINE™



KEEP YOUR ELECTRICAL SYSTEM RUNNING SMOOTHLY even when operating the central air conditioning on 30-amp. shoreline power. The PowerLine Energy Management System monitors onboard electrical usage to minimize the nuisance of tripped campground circuit breakers. It restricts the operation of postponable electrical loads during periods of heavy usage. As demand is lowered, PowerLine automatically restores power to secondary appliances and systems so you can go about your business without worry.



THE ONEPLACE SYSTEMS CENTER brings important and frequently used switches, gauges and controls into one central location so you can easily check and operate multiple systems.



For many people, the chassis is a mere afterthought when buying a new motor home. But the truth is, the chassis has an incredible impact on your overall experience. As the motor home's foundation, it affects the strength and integrity of nearly every component in the coach.

The Itasca Horizon is built exclusively on a Freightliner chassis. Freightliner has a solid reputation for providing top-quality motor home chassis. This reputation is justified when you experience the driving comfort, smooth ride and responsive handling of your Horizon. Top that with a network of over 350 chassis service centers—many open 24 hours a day, seven days a week—and you have real peace of mind knowing that you have a chassis that delivers outstanding overall performance and durability.

Horizon
2003

THE AIR FILTER and fluid level check points are thoughtfully located for easy service.

THE FRESH AIR INTAKE for the engine is positioned high on the sidewall. This prolongs filter life by reducing the amount of road dust and grime introduced into the airstream. A cleaner filter allows the engine to perform to its potential.



DRAINING AIR-LINE SYSTEM condensation is a recommended service procedure on all vehicles that utilize air brakes and air suspension. Horizon has automatic system dryers and heated air system drains that incorporate remote lanyard controls. This eliminates the need to crawl under the chassis to perform this routine maintenance function.

EXTERIOR MIRRORS feature an increased surface area for an expanded viewing range and are strategically positioned to optimize your field of vision.

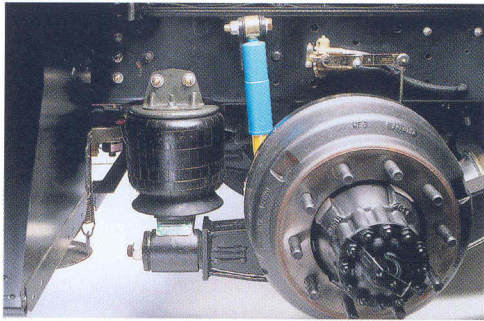


AN AUXILIARY AIR CONNECTION with a detachable 50' hose provides a ready source of compressed air.

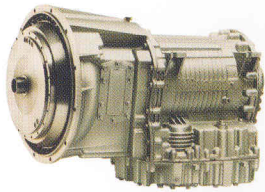


THE FRONT SLIDEROOM of the Horizon incorporates Winnebago Industries' innovative StoreMore slideout system. StoreMore storage compartments are large, well-lit and well-designed to accommodate bulky and odd-shaped items. Best of all, they move with the slideroom for easy access.

STOREMORE



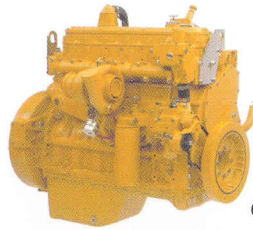
THE REAR AIR SUSPENSION SYSTEM places the air springs in a wide-track stance just inside the rear wheels. This is more efficient than less-advanced multi-bag systems and offers optimum stability while protecting the air springs from road debris.



THE ALLISON 3000 MH 6-speed electronic-control transmission is a proven performer. Its innovative Smart Logic system learns your driving habits and fine-tunes shift positions accordingly for maximum performance. A touchpad control makes changing gears as easy as pushing a button.



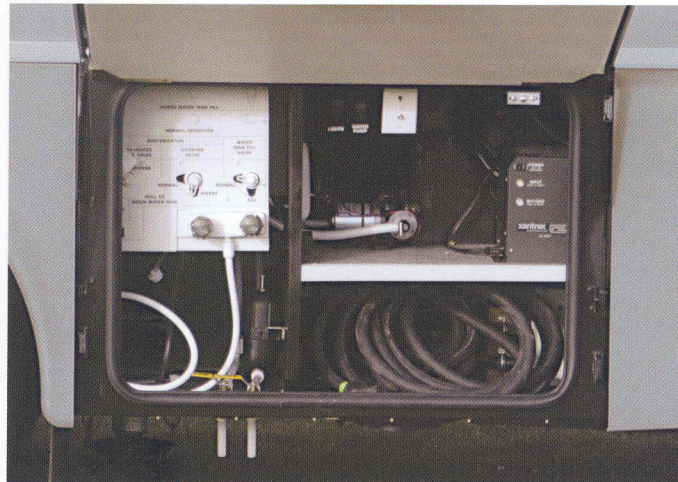
THE FULL-WIDTH MUD GUARD protects against flying debris and helps keep your Horizon clean. A trailer hitch comes standard with an impressive 10,000-lb. towing capacity.



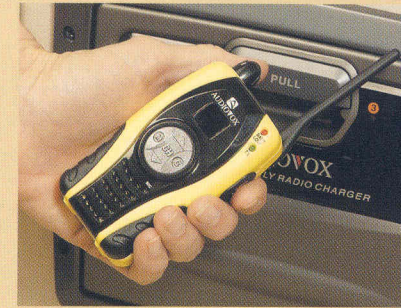
A RUGGED DIESEL ENGINE powers each Horizon for exceptional torque and economy. The 32TD includes a 300-hp ISB 5.9L Cummins diesel engine. All other models are powered by a 330-hp CFE 7.2L Caterpillar engine (shown here). Both engines feature advanced electronic controls for superior performance and fuel economy. The standard engine exhaust brake uses the engine to help slow the vehicle to promote longer brake life.



ENJOY ELECTRICAL POWER wherever you are. Your Horizon comes with a standard LP-powered 6,500 watt Onan® Marquis Gold™ generator or an available 7,500 watt Onan Quiet Diesel™ generator (shown here).



THE SERVICE CENTER is easy to access and includes an exterior wash station for rinsing off dirty equipment or sandy feet. The major plumbing connections are housed in a separate compartment that is heated for seasonal use.



A SET OF FOUR AVAILABLE TWO-WAY RADIOS gives you the freedom to communicate around the campground or when you're out on day trips. Each 14-channel radio has a two-mile range and provides up to 15 hours of standby and 90 minutes of talk time per charge with nickel metal hydride batteries. A built-in charging station is included.



ONE KEY opens most everything thanks to the innovative KeyOne™ System. The Horizon also includes a power door lock and power storage compartment locks with a keyless remote for your convenience.



ANTI-LOCK AIR BRAKES are standard on every Horizon. Experience maximum brake feel and control thanks to a treadle-style brake pedal that is mounted solidly to the steel cab deck.

EXTERIOR COLOR SCHEMES

Choose from three standard Horizon exterior graphics packages. Or for added styling, choose from one of three optional full-body automotive finish packages available in early 2003.

Exterior Graphics Packages

CYPRESS GREEN



OPAL BLUE

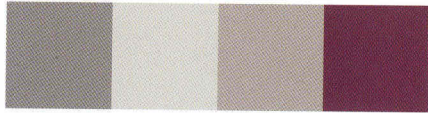


LIGHT SILVER



Full Body Paint Colors

AUBURN



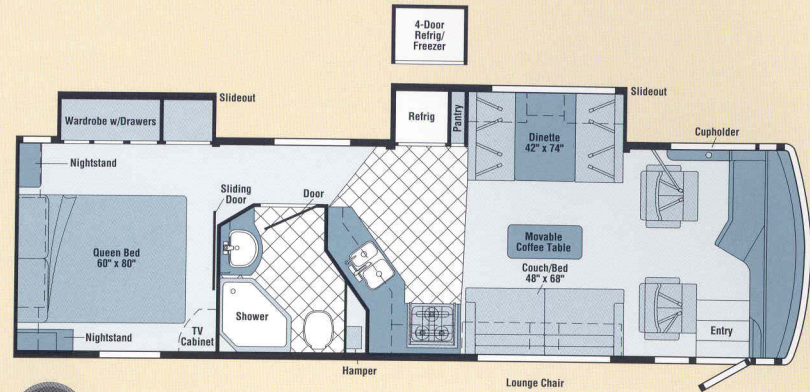
BLUE LAKE



MOCHA

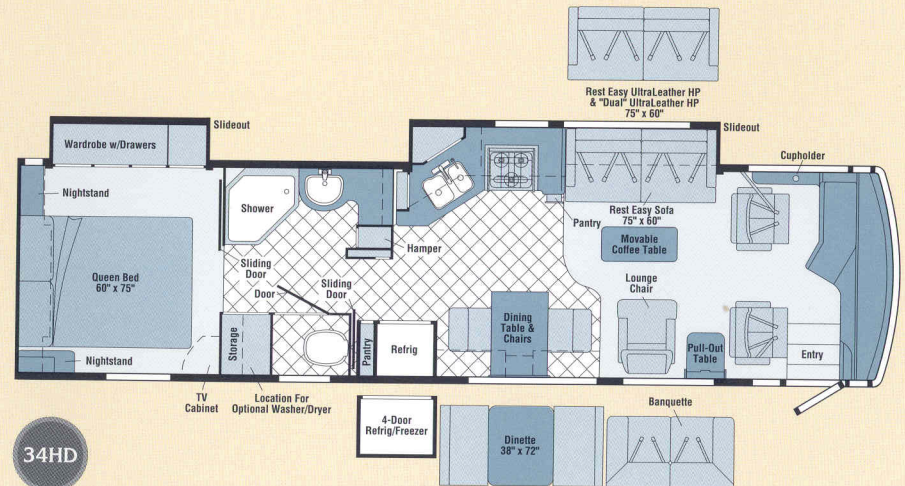
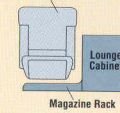


HORIZON FLOORPLANS



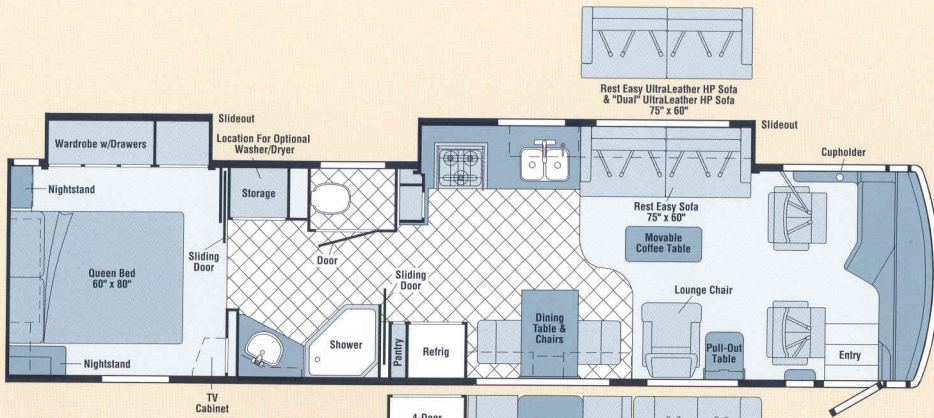
32TD AVAILABLE NOVEMBER 2002

- Full Comfort Dinette
- Dinette/refrigerator with **STOREMORE** slideout system
- Bedroom wardrobe slideout
- Large bath area
- Side-aisle design



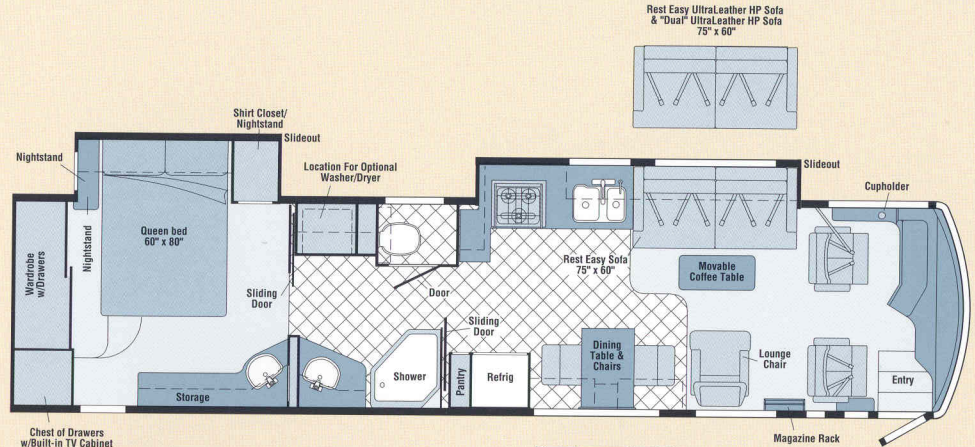
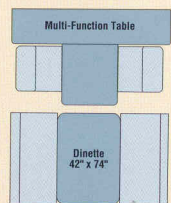
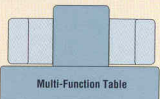
34HD

- Available Full Comfort Dinette
- Sofa/galley with **STOREMORE** slideout system
- Split-bath design with private toilet area
- Bedroom wardrobe slideout
- Moveable hoop-base lounge chair
- Multi-Position Lounge



36LD

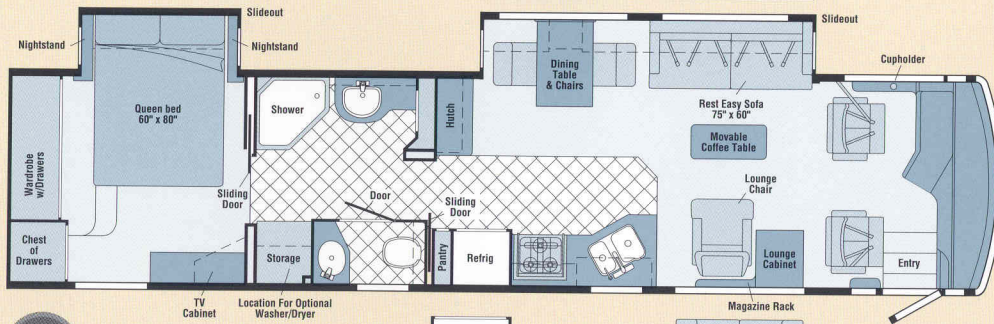
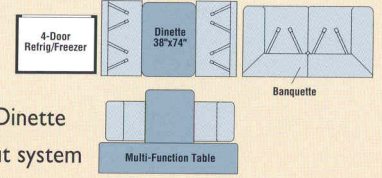
- Available  Full Comfort Dinette
- Sofa/galley with **STOREMORE** slideout system
- Split-bath design with private toilet area
- Bedroom wardrobe slideout
- Moveable hoop-base lounge chair
-  Multi-Position Lounge



39WD

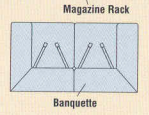
NEW

- Available  Full Comfort Dinette
- Sofa/galley with **STOREMORE** slideout system
- Split-bath design with private toilet area
- Bedroom slideout with large rear wardrobe
- Moveable hoop-base lounge chair
-  Multi-Position Lounge



39QD

- Available  Full Comfort Dinette
- Sofa/dining table with **STOREMORE** slideout system
- Bedroom slideout with large rear wardrobe
- Moveable hoop-base lounge chair
-  Multi-Position Lounge



Note: Dimensions shown are for sleeping space only and may vary due to styling differences. Dashed lines denote overhead storage areas.

HORIZON'S ONE-PIECE FIBERGLASS SIDEWALLS ARE INCREDIBLY DURABLE, featuring a high-gloss finish and contemporary graphics that will look great for years to come. Standard exterior features include hydraulic jacks and stainless steel wheel liners. A full-width mud guard is standard to protect your tow vehicle from road debris.



2003 HORIZON SPECIFICATIONS

	32TD	34HD	36LD	39QD	NEW 39WD
Length	32'8"	34'9"	36'5"	39'4"	39'4"
Exterior Height*	11'8"	11'10"	11'10"	11'9"	11'9"
Exterior Width^	8'5.5"	8'5.5"	8'5.5"	8'5.5"	8'5.5"
Exterior Storage^{oo} (cu. ft.)	82.3	92.3	116.0	145.0	145.0
Interior Height	6'8"	6'8"	6'8"	6'8"	6'8"
Interior Width	8'	8'	8'	8'	8'
Fresh Water Cap. w/Heater* (gal.)	96	96	96	96	96
Holding Tank Cap. - Black/Gray (gal.)	52/42	48/52	48/52	52/48	52/48
LP Cap.^o (gal.)	39	39	39	39	39
Fuel Cap. (gal.)	90	90	90	90	90
GCWR (lbs.)	36,850	36,850	36,850	37,910	37,910
GVWR (lbs.)	26,850	26,850	26,850	27,910	27,910
GAWR - Front (lbs.)	9,350	9,350	9,350	10,410	10,410
GAWR - Rear (lbs.)	17,500	17,500	17,500	17,500	17,500
Wheelbase	190"	208"	228"	262"	262"

AUTOMOTIVE/CHASSIS

	32TD	34HD	36LD	39QD	39WD
Chassis - Freightliner [®] Caterpillar [®] CFE 7.2L turbo-charged diesel 330-hp, rear radiator, Allison [®] 6-speed electronic 3000 MH transmission, NeWay [®] front & rear air suspension, 160-amp. alternator, exhaust catalyst, four-wheel ABS	S	S	S	S	S
Chassis - Freightliner [®] Cummins [®] ISB 5.9L turbo-charged diesel 300-hp, rear radiator, Allison [®] 6-speed electronic 3000 MH transmission, NeWay [®] front & rear air suspension, 160-amp. alternator, exhaust brake, four-wheel ABS	S				
Air Accessory Manifold quick connect, 50' air hose, pressure gauge, manual air shut off, Leveling Jacks hydraulic, manual control, Tire Tools wrench & leverage bar, Trailer Hitch 10,000-lbs. draw bar/500-lbs. maximum vertical tongue weight & wiring, Wheel Liners stainless steel	S	S	S	S	S
Wheels stylized aluminum	0	0	0	0	0

CAB AREA & DRIVER CONVENIENCES

	32TD	34HD	36LD	39QD	39WD
Cab Seats (fabric) w/3-point adjustable seat belts, armrests, lumbar support (driver), multi-adjustable slide/recline & swivel, Compass electronic w/outdoor thermometer, Console Center Cabinet , Cruise Control , Defroster Fans (2) auxiliary 2-speed w/instrument panel switch, Exhaust Brake Control , Floor Mat rubber, Hood Release , Map Lights , Monitor System rearview, color, w/single camera & 1-way audio, Sony [®]	S	S	S	S	S

CAB AREA & DRIVER CONVENIENCES (CONT.)

	32TD	34HD	36LD	39QD	39WD
Power Door Locks keyless entry w/remote, Powerpoints (2) 12-volt, Shades light filtering, cab windows, Steering Wheel tilt w/power assist, Sunvisors (2) powered, Window (driver) full slider w/screen, dual-glazed, Window (passenger) partial slider w/screen, dual-glazed, Windshield Wipers intermittent	S	S	S	S	S
Cab Seat* 6-way power assist (driver)	0	0	0	0	0
Cab Seats* 6-way power assist (driver & passenger)	0	0	0	0	0
Cab Seats UltraLeather HP™	0	0	0	0	0
Cab Seat* passenger seat w/footrest	0	0	0	0	0
Spotlight roof-mounted w/wireless remote	0	0	0	0	0
Trip Computer TripTek™	0	0	0	0	0

ENTERTAINMENT

	32TD	34HD	36LD	39QD	39WD
CB Prep antenna, antenna lead, 12-volt power supply, CD Holder , Entertainment Center (Exterior) w/Cassette DC receptacle, AC duplex receptacle, AM/FM radio, TV jack, radio antenna, speakers (2), table, lockable compartment, RV-RADIO (Cab) AM/FM stereo cassette/CD, roof-mounted flexible rubber antenna, speakers (4), weather band, Radio Power Switch main/auxiliary battery, Satellite System Ready , Telephone input & interior jacks, TV 19" Color AC w/remote, bedroom, TV 25" Color AC w/remote, front, TV Enhancement Package antenna (amplified), interior jack(s), coax wiring, cable input, exterior jack, reminder light, VCR w/remote, Video Selection System	S	S	S	S	S
Compact Multi-disc Changer Sony [®] w/remote	0	0	0	0	0
DVD Player*	0	0	0	0	0
Entertainment Center (Exterior) w/CD Player DC receptacle, AC duplex receptacle, AM/FM radio w/remote, TV jack, radio antenna, speakers (2), lockable compartment, table	0	0	0	0	0
Radios (4) two-way	0	0	0	0	0
Satellite Dish Antenna RV digital, elevation sensing unit	0	0	0	0	0
Sound System deluxe, w/5-channel QSround™ sound, TV 25" stereo color AC, stereo VCR, amplifier, cube speakers (5), bass speakers (2)	0	0	0	0	0
Stereo System (Bedroom)* AM/FM cassette, alarm clock	0	0	0	0	0
Stereo System (Bedroom)* AM/FM CD player, alarm clock	0	0	0	0	0

INTERIOR

	32TD	34HD	36LD	39QD	39WD
Accessory Package rechargeable flashlight, rechargeable hand-held vacuum cleaner, Ceiling fabric, Curtain front wraparound, pleated w/pull cords, Light wall lamp, Lights ceiling w/wall switches, incandescent, Lights fluorescent, recessed, galley, dinette, lounge w/2-way wall switches, Lights reading, auxiliary, Shades pleated, day/night, Sliding Stepwell Cover Panel powered, Windows dual-glazed/thermo-insulated	S	S	S	S	S

INTERIOR (CONT.)

	32TD	34HD	36LD	39QD	39WD
Cupholder(s)		S	S		S
Mirror		S		S	
Picture		S	S		

CABINETRY

	32TD	34HD	36LD	39QD	39WD
Woodgrain Portsmouth Oak stile-and-rail construction w/arched raised-panel inserts on upper doors, square raised-panel inserts on lower doors	S	S	S	S	S
Woodgrain Concert Cherry stile-and-rail construction w/arched raised-panel inserts on upper doors, square raised-panel inserts on lower doors	0	0	0	0	0
Woodgrain Washed Maple stile-and-rail construction w/arched raised-panel inserts on upper doors, square raised-panel inserts on lower doors	0	0	0	0	0

COUNTERTOPS

	32TD	34HD	36LD	39QD	39WD
Solid-Surface galley & bath	S	S	S	S	S

FLOORCOVERING

	32TD	34HD	36LD	39QD	39WD
Carpeting w/pad, Vinyl Tile galley & bath	S	S	S	S	S

FURNITURE

	32TD	34HD	36LD	39QD	39WD
Table coffee	S	S	S	S	S
Banquette* (fabric) w/throw pillows	0	0	0	0	0
Banquette* (UltraLeather HP™) w/throw pillows	0	0	0	0	0
BenchMark™ Full Comfort Dinette w/access to storage below	S	0	0	0	0
Chair lounge (hoop-base) w/magazine rack & cabinet	0		S		
Chair lounge (hoop-base) w/magazine rack & cabinet w/table		S	S		S
Couch (fabric) w/throw pillows	S				
Couch (UltraLeather HP™) w/throw pillows	0				
Dining Table & Chairs (2) free standing, (2) folding		S	S	S	S
Hutch					S
Lounge Chair* (UltraLeather HP™)	0	0	0	0	0
Multi-function Table & Chairs (2) free standing, (2) folding		0	0		
Rest Easy® Multi-Position Lounge* (fabric) w/throw pillows	S	S	S	S	S
Rest Easy® Multi-Position Lounge* (UltraLeather HP™)	0	0	0	0	0
Rest Easy® Multi-Position Lounge* (UltraLeather HP™) w/dual recliners	0	0	0	0	0

GALLEY	32TD	34HD	36LD	390D	39WD
Coffeemaker, Faucet single-control w/pull-out sprayer, Moen®	S	S	S	S	S
Lights fluorescent on ceiling & under cabinet,					
Microwave/Convection Oven w/exterior vent range fan, residential 30", Sharp® Mirror(s), Pantry* slideout, Range Cover flush-mounted, bi-fold (countertop material), Range Top 3-burner w/storage below, recessed, sealed burners, Amana® Refrigerator/Freezer large double-door w/icemaker, Norcold® Roof Vent powered ventilator fan, Silverware Tray, Sink double-bowl, molded Swanstone™, w/sink covers (countertop material), Towel Rack wire, Wastepaper Basket, Water Purification System Everpure®					
Appliance Storage Cabinet	S				
Magazine Rack*				S	
Microwave/Speedcook Oven w/range fan, residential 30", G.E. Advantium™	0	0	0	0	0
Range 3-burner w/large oven, glass door w/storage below, recessed, sealed burners, Amana®	0	0	0	0	0
Refrigerator/Freezer* 4-door w/icemaker, Norcold®	0	0	0	0	0
Spice Rack	S	S	S	S	
Utility Tray tip-out	S	S	S	S	
Wall Border	S		S		

BATH	32TD	34HD	36LD	390D	39WD
Cabinet lavatory, Cabinet linen, Faucet(s) (lavatory) dual-control, Moen® Faucet (shower) single-control w/flexible showerhead, Hair Dryer wall-mounted w/night-light, Hand-held Showerhead, Light shower, Lights make-up, Roof Vent insulated, power, Shower w/wall surround, Shower Door textured glass, Skylight, Sink oval, Tissue Holder, Toilet porcelain w/foot-pedal flush, Towel Bar, Towel Rack 3-rod	S	S	S	S	S
Fold-down Shower Seat	0	0	0	0	0
Hamper tip-out	S	S			
Magazine Rack			S	S	
Medicine Cabinet	S	S	S	S	
Mirror w/frame		S			
Mirror frameless w/beveled edge				S	
Robe Hook	S	S	S	S	
Sink oval, private toilet area				S	
Towel Ring	S	S	S	S	

BEDROOM	32TD	34HD	36LD	390D	39WD
Alarm Clock, Bed Sleep Number® queen-size mattress by Select Comfort™ w/underbed storage, Bedsprad, Pillows, Throw Pillows, Headboard, Ceiling Molding, Lights reading, Light decorative ceiling w/dimmer, Nightstand(s), Powerpoint 12-volt receptacle, Wainscoting, Wardrobe Cabinet carpeted floor, cedar-lined, clothes rod, drawers, light	S	S	S	S	S
Cabinet lavatory					S
Cabinet medicine					S
Ceiling Fan	0	0	0		
Faucet (lavatory) dual-control					S
Light decorative table lamp	S	S	S		
Light decorative wall lamp	S	S	S	S	
Lights make-up					S
Mirror	S	S	S		

BEDROOM (CONT.)	32TD	34HD	36LD	390D	39WD
Sink oval					S
Towel Ring					S
Vanity Cabinet w/tip-up countertop, folding chair, attached mirror					S

EXTERIOR	32TD	34HD	36LD	390D	39WD
Awning slideroom cover, Awning* patio, entrance door, Awning Rails w/rain gutters, Door entrance w/separate screen door, deadbolt lock, Entrance Door Step single, electric w/doorjamb switch, Exterior Graphics Packages Sand Metallic over Cypress Green Metallic recommended w/Provence Blue, Harvest Tapestry or Carrara Cream; Light Steel Metallic over Light Silver Metallic recommended w/Provence Blue or Carrara Cream; Light Steel Metallic over Opal Blue Metallic recommended w/Provence Blue, or Carrara Cream, Ladder, Lights fog lamps, Light porch light w/interior switch, Light under hood, Lights compartment, Light service, driver-side, Lights auxiliary docking lamps, Locking Fuel-fill Door, Mirrors electric remote w/defrost, Mud Flaps(2) rear, Mud Guard full-width, Receptacle AC duplex, Sidewall Skin 1-piece smooth fiberglass, high-gloss, Storage Compartments smooth valance panels, trunk liner, gas cylinders, Tri/Mark® KeyOne™ System, paddle latch, lights	S	S	S	S	S
Air Horns roof-mounted	0	0	0	0	0
Awning* patio, entrance door, electric	0	0	0	0	0
Awning* windows	0	0	0	0	0
Undercoating	0	0	0	0	0
Full Body Paint Options (available in early 2003) Mocha recommended with Harvest Tapestry or Carrara Cream, Auburn recommended with Harvest Tapestry or Carrara Cream, Blue Lake recommended with Provence Blue	0	0	0	0	0

SYSTEMS	32TD	34HD	36LD	390D	39WD
Automotive Heater/Air Conditioner, Auxiliary Start Circuit, Batteries (Coach) (2)* deep cycle, Battery (Coach) disconnect system, Battery Charge Control automatic dual, Central Air Heat Pump, Drain 1 1/2" water tank, Electrical Distribution System AC & DC breaker panels, 55-amp. electronic converter/charger,* Generator 6,500 watt, Onan® Marquis Gold; LP, Generator/Shoreline Automatic Changeover Switch, Inverter* DC/AC, 300 watt, ONEPLACE™ Systems Center wall-mount, battery digital voltmeter, POWERLINE™ energy management display, generator hourmeter gauge, generator start/stop switch, heating/A/C thermostat, holding tank levels, LP tank level, solar panel/battery charger light; water heater switch, water heater on light & pilot indicator light, water pump switch, water tank level, Power Cord 50-amp., POWERLINE™ Energy Management System, Service Center (Drainage) drainage valves, holding tank flushing system, 10' sewer hose, Service Center (Electrical/Water) cable inputs, city water hookup/tank diverter fill, drain for fresh water system, exterior wash station w/pump switch, power cord, shoreline/generator automatic changeover switch, telephone input, Solar Panel 10 watt battery charger, Tank flushing system, black tank only, Tank holding, heated compartment, Tank LP, permanent mount w/gauge, TRUEAIR™ Residential Central Air Conditioning System, Water Heater 10-gallon electronic ignition, LP gas/110 vac w/Motoraid® Water Heater Winterization Bypass Valve manual, Water Hookup city, Wash Station exterior, Water Pump demand w/accumulator tank, Water System Winterizing Valve manual, Water Tank Fill pressurized city hookup w/diverter valve, Water Tank Fill w/locking door	S	S	S	S	S

SYSTEMS (CONT.)	32TD	34HD	36LD	390D	39WD
Furnace 35,000 BTU, low profile	S				
Furnace 40,000 BTU, low profile		S	S	S	S
Generator 7,500 watt, Onan® Quiet Diesel™	0	0	0	0	0
Inverter/Charger* DC/AC, 1,500 watt w/remote panel	0	0	0	0	0
Washer/Dryer Prep		S	S	S	S
Washer/Dryer Combination		0	0	0	0
Water System Winterizing Kit automatic	0	0	0	0	0

SLIDEOUT	32TD	34HD	36LD	390D	39WD
Slideout Room rear w/slideroom cover	S	S	S	S	S
Slideout Room couch/dining table w/slideroom cover, STOREMORE®					S
Slideout Room couch/galley w/slideroom cover, STOREMORE®			S	S	S
Slideout Room refrigerator/dinette w/slideroom cover, STOREMORE®	S				

SAFETY	32TD	34HD	36LD	390D	39WD
Assist Bar(s) interior, Assist Handle exterior, acrylic w/logo, Bumpers front & rear, Detectors/Alarms LP leak, smoke, carbon monoxide, Fire Extinguisher 10 B.C., Ground Fault Interrupter, Light center high-mount brake lamp, Light(s) courtesy w/wall switch(es), Seat Belts cab, 3-point, Seat Belts lap (in selected areas), Window escape, Windshield laminated safety glass	S	S	S	S	S

WARRANTY	32TD	34HD	36LD	390D	39WD
12-month/15,000-mile basic limited warranty, 36-month/36,000-mile warranty on structure,* 10-year limited parts & labor warranty on roof skin	S	S	S	S	S

- The height of each model is based on the curb weight of a typically equipped unit on the standard chassis. The actual height of your vehicle may vary by as much as 2" depending on chassis or equipment variations.
 - ^ Horizon® floorplans feature a wide-body design — over 96". In making your purchase decision, you should be aware that some states restrict access on some or all state roads to 96" in body width. Before making your purchase decision, you should confirm the road usage laws in the states of interest to you.
 - ∞ Your motor home's load capacity is designated by weight, not by volume, so you cannot necessarily use all available space when loading your motor home.
 - * Not all items available in combination. See dealer for details.
 - ◇ Capacities shown are tank manufacturer's listed water capacity (W.C.). Actual filled LP capacity is 80% of listing due to overfilling prevention device on tank.
 - S Standard
 - O Optional
 - + Actual towing capacity is dependent on your particular loading and towing circumstances which includes the GVWR, GAWR and GCWR as well as adequate trailer brakes. Please refer to your vehicle's operator's manual for further towing information.
 - ** See your dealer for complete warranty information.
- Winnebago Industries® continuing program of product improvement makes specifications, equipment, model availability and prices subject to change without notice. Comparisons to other motor homes are based on the most recent information available.

Not all motor homes are created equal. Take a closer look and you'll see there is much more to an Itasca Horizon than a long list of standard features and compelling floorplans. Beneath it all, you'll find a SuperStructure™ foundation of strength and durability.



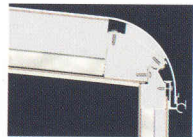
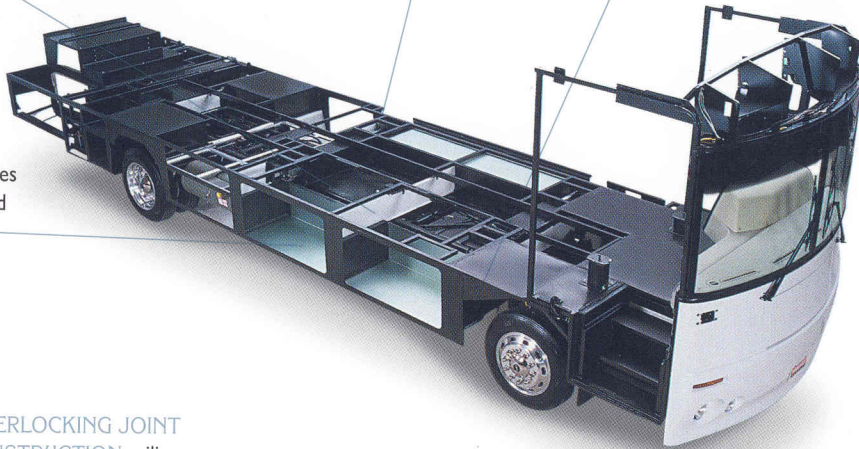
SuperStructure is the term given to Winnebago Industries' structural motor home design and construction. Rather than a single component, it is the culmination of design integration that incorporates steel and aluminum substructures, composite-design laminated floor risers, interlocking joint technology and Thermo-Panel® floor, roof and sidewalls to form an incredibly strong, durable vehicle body.

LAMINATED RISERS feature a welded aluminum core for superior strength and provide a stable base for the floor structure and storage compartments.

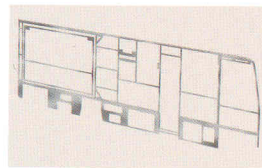
THE FOUNDATION SUBSTRUCTURE assembly is precision-aligned to maximize longitudinal and cross-coach support as well as strength and durability.

CRITICAL STEEL COMPONENTS are treated using an advanced electro-deposition coating process that provides superior corrosion protection.

STORAGE COMPARTMENTS attach to outrigger assemblies so that the weight of stowed items is carried and dispersed throughout the foundation substructure.



INTERLOCKING JOINT CONSTRUCTION utilizes advanced aluminum structural components to create integrated floor-to-sidewall and sidewall-to-roof joints. This design effectively distributes the weight of the walls and roof, making a stronger and more durable body than competitor designs which rely on screws to carry the weight.



WE INVENTED THERMO-PANEL SIDEWALL CONSTRUCTION and over the years have perfected this innovative composite construction process. It combines an exterior fiberglass panel, high-density block foam insulation and welded aluminum support structures to create some of the strongest, most durable and lightweight sidewalls in the industry.



1-YEAR OLD ITASCA FIBERGLASS ROOF



1-YEAR OLD COMPETITOR'S RUBBER ROOF

BUILT TO A HIGHER STANDARD. The Horizon features a crowned, one-piece fiberglass roof backed with a 10-year limited parts and labor roof skin warranty. Fiberglass offers superior strength, attractiveness and durability over the rubber roofs found on many competitive models which can chalk, streak and degrade over time. Fiberglass also provides increased puncture and tear resistance.

COMMITTED TO SERVICE. We back our motor homes with the best service after the sale in the industry.



TRIP Saver
FAST TRACK PARTS

- 12-month/15,000-mile basic limited warranty
- 36-month/36,000-mile warranty on structure
- Standard 10-year limited parts and labor roof skin warranty
- Complimentary 24-hour roadside assistance program
- TripSaver Fast Track Parts. TripSaver guarantees that in-stock warranty parts ship directly to your dealer within 24 hours.
- National dealer service network



RECOGNIZED QUALITY. Recreation Vehicle Dealer Association members annually rate RV manufacturers on the quality of their products, and sales and service support. Winnebago Industries has achieved the coveted Quality Circle award every year since its inception, the only major motor home manufacturer to do so.



ALL MOTOR HOMES ARE NOT CREATED EQUAL. Learn more about what sets Winnebago Industries apart. Ask your dealer for this guide. It will help you learn what makes Winnebago Industries motor homes distinctly superior to other brands.

WARNING: JOINING WIT HAS BEEN KNOWN TO CAUSE EXCESSIVE FUN.

Winnebago-Itasca Travelers (WIT) is a club for owners of Winnebago Industries motor homes. WIT is a great way to meet people and offers you:



- Caravans and rallies
- Local and state group activities
- RV travel benefits

winnebagoind.com

For Sales and Service Information Contact:



©2002 Winnebago Industries, Inc.



Printed in USA

Seat belts are your most important hookup. Always buckle up.