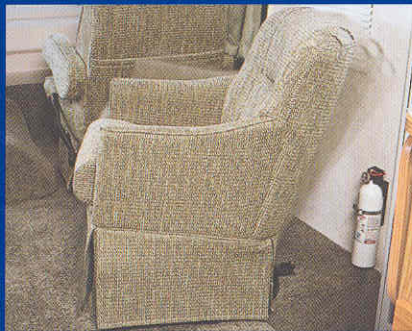


Sumova[®]
2003



Last year, Winnebago Industries® introduced the Itasca Sunova, an all-new, affordable Class A motor home. This year the Sunova is back turning even more heads with an additional all-new floorplan and even more features. Take a close look and you'll find Sunova is a Class A motor home that really shines with an impressive list of standard amenities. And because it's an Itasca, you know it meets the high standards of Winnebago Industries. Once you spend time looking at motor homes, you'll discover the Sunova is refreshingly affordable and the best value around, making it the perfect introduction to the Class A lifestyle.



Stitchcraft quality and innovation is featured throughout the Sunova. The hoop-base swivel/glider chair is especially relaxing. It easily moves to your favorite location and locks in place while traveling. It's a standard Sunova feature.

Sunova
2003



30B CILANTRO

EXPERIENCED RVERS CHOOSE ITASCA MOTOR HOMES for their innovative designs and reputation for quality. You'll find thoughtful features like the galley's Congoleum® vinyl floorcovering, a one-piece fabric ceiling, abundant overhead lighting and the convenient recessed OnePlace Systems Center. Also included are many features that are simply not available in competitive models at this level — features like ceiling-ducted roof air with a wall-mounted thermostat and floor-ducted heating for better climate control. Large, easy-to-operate wall-mounted switches control the strategically placed overhead lighting. Not to be forgotten, Sunova's StoreMore slideout system allows interior cabinets and exterior storage compartments to extend with the slideroom for easy access to storage space.



ONE PLACE
systems center

INTERIOR DECORS

CILANTRO



WOODBINE BEIGE



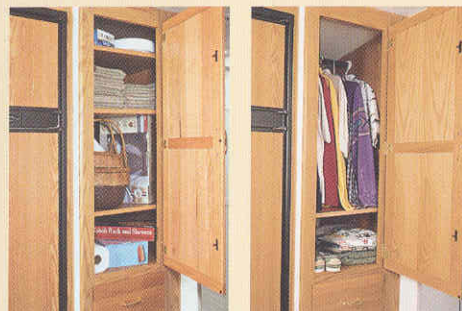
PORTSMOUTH OAK
WOODGRAIN





THE IN-LINE GALLEY

is loaded with appliances like a touch control microwave and a Magic Chef® three-burner range with oven so you can easily create a savory meal or a quick snack. You'll have plenty of workspace when you flip up the countertop extension and cover the recessed sink. Cabinet doors and drawers stay secure with positive catches and open easily with large 4" handles.*



STOCKING UP is easy thanks to the food storage available in the double-door refrigerator/freezer and pantry. The innovative pantry has adjustable shelves that can be quickly converted into an extra wardrobe.*



WHAT A DIFFERENCE a Class A bedroom makes. In addition to a walk-around queen-size bed with Serta® mattress, you'll enjoy a large wardrobe, shirt closet and plenty of underbed and overhead cabinet storage.

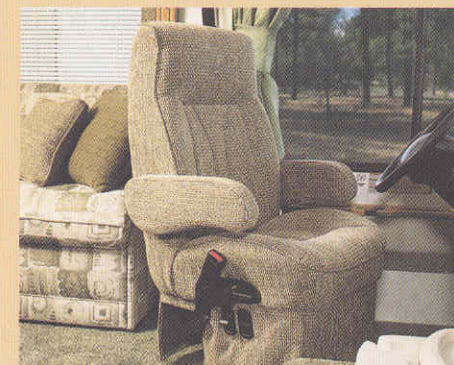


THE SPLIT BATH DESIGN creates a more spacious bathroom area. This allows for a residential-height toilet with foot-pedal flush and large lavatory and medicine cabinets. You can even optimize your storage space when traveling with the removable clothes rod located in the shower.

TAKE A BREAK FROM THE GREAT OUTDOORS to enjoy all the entertainment options that Sunova has to offer. A 19" TV comes standard and you can increase your viewing options with the available VCR and digital satellite dish. Choose the 130 watt inverter and enjoy the TV and VCR even when you're not connected to shoreline or generator power. The beautiful Portsmouth Oak Woodgrain cabinetry combines Old World attention-to-detail and advanced, computerized manufacturing for unparalleled fit, finish and durability.



DRIVING IS ONE OF THE JOYS of owning a motor home. Sunova enhances that experience with large, easy-to-reach dash controls that are well labeled so they can be identified at a glance. An available rearview monitor system ensures easy backing. To enhance your listening pleasure, our engineers teamed up with the radio manufacturer to create the **RV-RADIO™** specifically for RV use. This exclusive feature includes an AM/FM stereo, cassette, CD player and a built-in weather band for immediate weather updates at the touch of a button. Its large control knobs and buttons are easy for anyone to operate.



SIT BACK AND ENJOY the ride. Custom Stitchcraft driver and passenger seats feature a high-back frame with fixed lumbar support that is easy on your back. Both chairs swivel and slide for better positioning. They also include dual-position armrests and multi-position recline for comfort on longer trips.



Stop worrying about water run-off dripping on your windows, thanks to an innovative, built-in awning rail gutter system that drains water away from the entrance door and windows.



Convenience is the key to Sunova's service center. A heated holding tank compartment and water heater winterization bypass valve let you extend your camping season. An exterior wash station is also available for easy cleanups.



Towing is easy. The standard hitch offers a 5,000-lb. towing capacity and 350-lb. tongue weight to accommodate your towing needs.*



An Onan® generator is standard and provides ample 110-volt power when shoreline service is unavailable. (4,000 watt Onan MicroQuiet™ on the 27C and 30B, 5,500 watt Onan Marquis Gold™ on 33L is shown.)



JUST ONE LOOK AND YOU KNOW the Itasca Sunova out-classes your typical entry-level motor home. The one-piece Thermo-Panel® fiberglass sidewalls are attractive, durable and easy to maintain. Leveling is effortless with the available Kwikiee® hydraulic jacks. You can also add a patio awning and stainless steel wheel liners for a touch of style.

COMPARTMENT LIGHTS
illuminate stored items.

ADVANCED SEAL-PLANE
offers improved protection against the elements.

GAS STRUTS
are easy to open and stay open, too.



SINGLE-PADDLE LATCHES
for one-handed operation.

ONE-PIECE, METAL-SKIN DOORS
are an advanced, laminated composite material, creating a door that is lightweight and exceptionally strong.

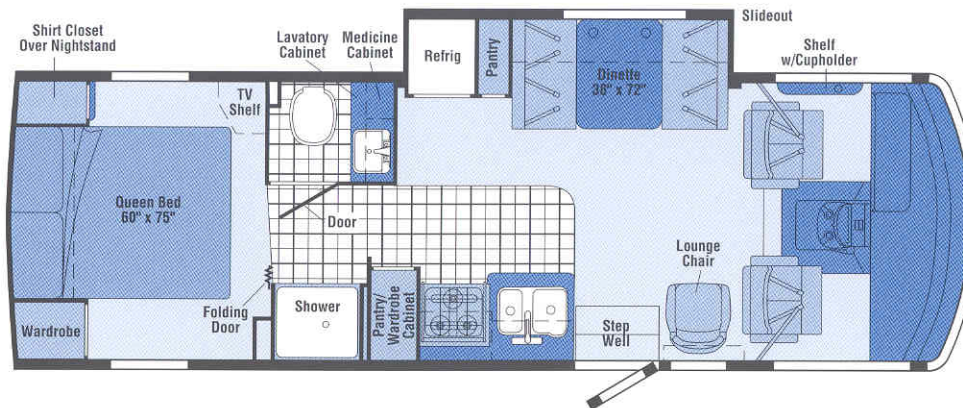
DUAL LATCHING MECHANISMS
secure both ends of the door for added strength and an improved seal.



THE STOREMORE SLIDEOUT SYSTEM is a Winnebago Industries original and is still the industry's premier slideout system. StoreMore allows for large storage compartments that accommodate oversized and odd-shaped items. They extend with the slideroom for easy access. The StoreMore slideout system on the 2003 Sunova features an electric slide mechanism. It's the first electric powered slideout system to meet our stringent quality and performance standards. Winnebago Industries' engineers worked in conjunction with Kwikiee Manufacturing to develop this powerful and reliable dual-ram/dual-motor technology. It features electronic synchronization for improved room movement and better sealing, as well as built-in diagnostics for easier service.

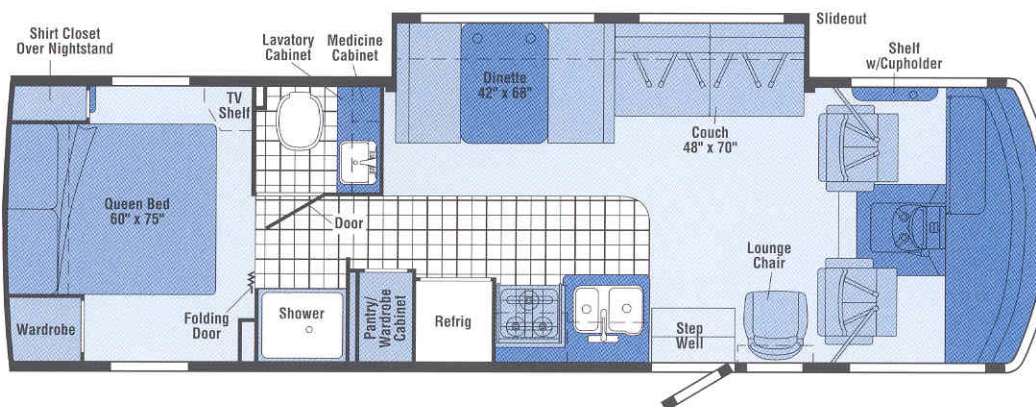
27C

- Refrigerator/dinette **STOREMORE** slideout
- In-line galley
- Split bath/private shower
- Walk-around queen bed



30B

- Dinette/couch **STOREMORE** slideout
- In-line galley
- Split bath/private shower
- Walk-around queen bed

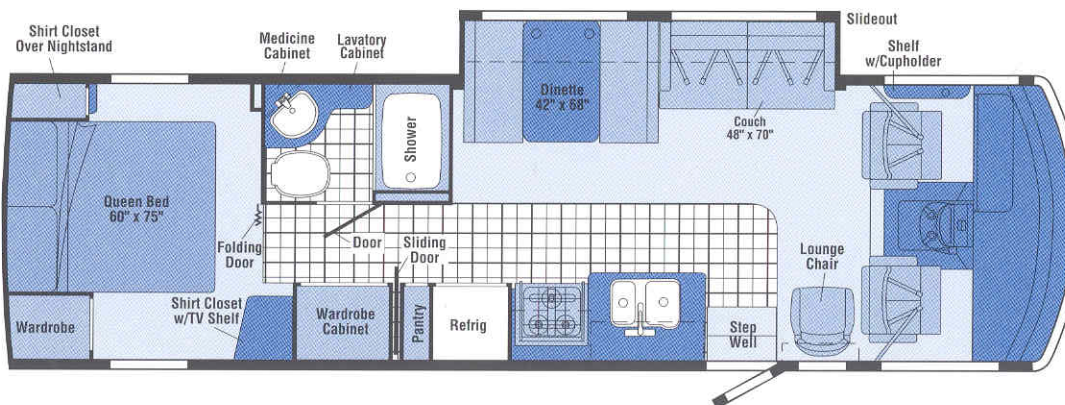


NEW

33L

AVAILABLE DECEMBER 2002

- Dinette/couch **STOREMORE** slideout
- In-line galley
- Private side bath
- Large wardrobe across from bath



VINYL FLOORCOVERING



SEAT BELTS

Note: Dimensions shown are for sleeping space only and may vary due to styling differences. Dashed lines denote overhead storage areas.



2003 SUNOVA SPECIFICATIONS

F = Ford® W = Workhorse™	27C	30B	33L NEW
Length	27'10.6"	30'10"	33'2"
Exterior Height w/A/C*	11'11"	11'10"	11'10"
Exterior Width^	8'5.5"	8'5.5"	8'5.5"
Exterior Storage™ (cu. ft.)	79.9	103.7	120 ⁸
Interior Height	6'8"	6'8"	6'8"
Interior Width	8'0.5"	8'0.5"	8'0.5"
Fresh Water Capacity w/Heater* (gal.)	75	75	75
Holding Tank Capacity – Black/Gray (gal.)	36/46	41/40	41/40
LP Capacity◇ (gal.)	18	18	18
Fuel Capacity F/W (gal.)	NA/40	75/75	75/75
GCWR F/W (lbs.)	NA/19,000	26,000/21,000	26,000/21,000
GVWR F/W (lbs.)	NA/15,000	18,000/18,000	18,000/18,000
GAWR – Front F/W (lbs.)	NA/6,000	7,000/6,000	7,000/6,000
GAWR – Rear F/W (lbs.)	NA/11,000	11,000/12,000	11,000/12,000
Wheelbase	168"	190"	208"

AUTOMOTIVE/CHASSIS

	27C	30B	33L
Chassis – Ford® 6.8L SOHC Triton® V10 310-hp, 4-speed overdrive transmission, brakes hydraulic, 4-wheel ABS, 130-amp. alternator	S	S	
Chassis – Workhorse™ 8.1L Vortec V8 340-hp, 4L85E 4-speed overdrive transmission, 4-wheel anti-lock disc brakes, 145-amp. alternator	S	O	O
Tire spare, Tire Tool wrench, Trailer Hitch ⁺ 5,000-lbs. draw bar/350-lbs. maximum vertical tongue weight & wiring, Wheelcovers	S	S	S
Leveling Jacks hydraulic – Kwikiee® w/touch pad control	O	O	O
Shocks/Stabilizer Package front, Workhorse™	O	O	O
Wheel Liners stainless steel	O	O	O

CAB AREA & DRIVER CONVENIENCES

	27C	30B	33L
Beverage Holder, Cab Seats (fabric) w/3-point shoulder & lap seat belts w/retractors, armrests, lumbar support fixed, multi-adjustable slide/recline & swivel, Cigarette Lighter/12-Volt Powerpoint, Convenience Tray, Cruise Control, Map Light, Map Pocket, Steering Wheel tilt w/power assist, Sunvisors, Trim Panel driver-side w/cupholder, storage tray & bubble level indicator, Window (driver & passenger) full slider w/screen, Windshield Wipers intermittent	S	S	S
Defroster Fans (2) auxiliary 2-speed w/instrument panel switch	O	O	O
Monitor System rearview w/single camera & 1-way audio, Videoman®	O	O	O

ENTERTAINMENT

	27C	30B	33L
RV-RADIO™ (Cab) AM/FM stereo cassette/CD, roof-mounted flexible rubber antenna, speakers (4), Radio Power Switch main/auxiliary battery, Satellite System Ready, TV 19" Color AC w/remote, TV Enhancement Package antenna (amplified), 12-volt powerpoint(s), interior jack(s), coax wiring, cable input, splitter, TV shelf	S	S	S
Satellite Dish Antenna Winegard®, RV digital, elevation sensing unit	O	O	O
VCR w/remote	O	O	O

INTERIOR

	27C	30B	33L
Blinds mini (lounge, dinette), Ceiling fabric, Clock, Curtain front wraparound w/track, Lights reading, adjustable halogen (overheads), ceiling, incandescent w/wall switches, Picture, Roof Vent* nonpowered lounge & powered bath, Blinds pleated (bedroom)	S	S	S
Roof Vent* powered ventilator fan, lounge	O	O	O

CABINETRY

	27C	30B	33L
Woodgrain Portsmouth Oak stile-and-rail construction	S	S	S

COUNTERTOPS

	27C	30B	33L
Laminate w/T-mold edging	S	S	S

FLOORCOVERING	27C	30B	33L
Carpeting w/pad, Vinyl bath & galley	S	S	S

FURNITURE	27C	30B	33L
Lounge Chair hoop-base, swivel/glider, Dinette access to storage below	S	S	S
Couch w/throw pillow	S	S	

GALLEY	27C	30B	33L
Countertop w/flip-up extension, Faucet single-control, Microwave Oven , Pantry , Range Hood vented w/light & fan, Range three-burner (one high-output) w/oven, Magic Chef, [®] Refrigerator/Freezer double-door, Sink recessed, molded, double-bowl w/sink cover (countertop material), Wall Border	S	S	S

BATH	27C	30B	33L
Cabinets lavatory, medicine, Faucet (lavatory) dual-control, Faucet (shower) dual-control w/flexible showerhead, Light shower, Mirror frameless w/beveled edge, Shower w/removable clothes rod, Shower Door folding, Shower Skylight , Sink , Tissue Holder , Toilet w/foot-pedal flush, Towel Rack 3-rod, mounted to door, Wall Border	S	S	S

BEDROOM	27C	30B	33L
Bed queen, Serta [®] innerspring, w/underbed storage, Bedspring pillow shams, throw pillow, headboard, Lights decorative wall lamps, Nightstand , Shirt Closet(s) , Wall Border , Wardrobe Cabinet carpeted, clothes rod, drawers, light (33L)	S	S	S

EXTERIOR	27C	30B	33L
Awning Rails w/rain gutters, Door entrance w/separate screen door, deadbolt lock, Entrance Door Steps double, electric w/doorjamb switch, Light porch light w/interior switch, Mirrors manual adjust w/convex, Mudflaps front, Receptacle AC duplex, Sidewall Skin one-piece smooth fiberglass, Storage Compartments valance panels, gas strut, single-paddle latch, lights, trunk liner	S	S	S
Awning* patio	O	O	O
Ladder	O	O	O
Mirrors electric/remote w/defrost	O	O	O
Undercoating Workhorse [™]	O	O	O

SYSTEMS	27C	30B	33L
Automotive Heater/Air Conditioner , Auxiliary Start Circuit , Batteries (Coach) (2) deep-cycle, group 24, Battery (Coach) disconnect system, Battery Charge Control automatic dual, Electrical Distribution System AC breaker panels, DC fuses, 45-amp. converter/charger, ONEPLACE[™] Systems Center wall-mount, battery condition gauge, generator hourmeter gauge, generator start/stop switch, heating/A/C thermostat, holding tank levels, LP tank level, water heater light(s), water heater switch, water pump switch, water tank level, Power Cord 30-amp., Roof Vent powered, bath, Service Center city water hookup/tank diverter fill, drainage valves, sewer hose, cable input, power cord, Sewer Hose 10', Tank holding, heated compartment, Tank LP, permanent mount w/gauge, Water Heater 6-gallon, electronic ignition, LP gas, Water Heater Winterization Bypass Valve manual, Water Pump demand, Water System Winterization Valve , Water Tank Fill gravity	S	S	S
Energy Management Display			S
Air Conditioner (Roof) 13,500 BTU, ceiling-ducted w/wall thermostat	S		
Air Conditioner (Roof) 14,800 BTU, ceiling-ducted w/wall thermostat	O	S	
Air Conditioners (2) (Roof) high-efficiency			S
Furnace 30,000 BTU, low profile, ducted	S	S	
Furnace 35,000 BTU, low profile, ducted			S
Generator* 4,000 watt, Onan [®] MicroQuiet [™] gas	S	S	
Generator* 5,500 watt, Onan [®] MarquisGold [™] gas			S
Inverter* DC/AC, 130 watt	O	O	O
Wash Station exterior, w/pump switch located in service center	O	O	O
Water Heater 6-gallon, electronic ignition w/Motoraid & auxiliary auto heater	O	O	O

SLIDEOUT	27C	30B	33L
Slideout Room dinette/refrigerator w/slideroom cover, STOREMORE[®]	S		
Slideout Room couch/dinette w/slideroom cover, STOREMORE[®]		S	S

SAFETY	27C	30B	33L
Assist Handle exterior, Assist Strap interior, Bumpers front & rear, Detectors/Alarms LP leak, smoke, carbon monoxide, Fire Extinguisher 10 B.C., Ground Fault Interrupter , Light center high-mount brake lamp, Seat Belts cab, 3-point, Seat Belts lap (in selected areas), Window escape, Windshield laminated safety glass	S	S	S

WARRANTY	27C	30B	33L
12-month/15,000-mile basic limited warranty , 36-month/36,000-mile warranty on structure,** 10-year limited parts & labor warranty on roof skin	S	S	S

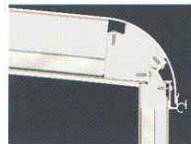
- The height of each model is based on the curb weight of a typically equipped unit on the standard chassis. The actual height of your vehicle may vary by as much as 2" depending on chassis or equipment variations.
- ^ Sunova floorplans feature a wide-body design — over 96". In making your purchase decision, you should be aware that some states restrict access on some or all state roads to 96" in body width. Before making your purchase decision, you should confirm the road usage laws in the states of interest to you.
- * Not all items available in combination. See dealer for details.
- ◇ Capacities shown are tank manufacturer's listed water capacity (W.C.). Actual filled LP capacity is 80% of listing due to overfilling prevention device on tank.
- ∞ Your motor home's load capacity is designated by weight, not by volume, so you cannot necessarily use all available space when loading your motor home.
- NA Not Available
- S Standard
- O Optional
- § Measurements are based on the most recent information available. See your dealer for specifications.
- + Actual towing capacity is dependent on your particular loading and towing circumstances which includes the GVWR, GAWR and GCWR as well as adequate trailer brakes. Please refer to your vehicle's operator's manual for further towing information.
- ** See your dealer for complete warranty information.

Winnebago Industries[®] continuing program of product improvement makes specifications, equipment, model availability and prices subject to change without notice. Comparisons to other motor homes are based on the most recent information available.

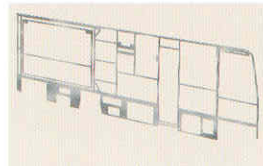
Not all motor homes are created equal. Take a closer look and you'll see there is much more to an Itasca Sunova than a long list of standard features and compelling floorplans. Beneath it all, you'll find a SuperStructure™ foundation of strength and durability.



SuperStructure is the term given to Winnebago Industries' structural motor home design and construction. Rather than a single component, it is the culmination of design integration that incorporates steel and aluminum substructures, welded tubular steel floor risers, interlocking joint technology and Thermo-Panel floor, roof and sidewalls to form an incredibly strong, durable vehicle body.



INTERLOCKING JOINT CONSTRUCTION utilizes advanced aluminum structural components to create integrated floor-to-sidewall and sidewall-to-roof joints. This design effectively distributes the weight of the walls and roof, making a stronger and more durable body than competitor designs which rely on screws to carry the weight.



WE INVENTED THERMO-PANEL SIDEWALL CONSTRUCTION and over the years have perfected this innovative composite construction process. It combines an exterior fiberglass panel, high-density block foam insulation and welded aluminum support structures to create some of the strongest, most durable and lightweight sidewalls in the industry.

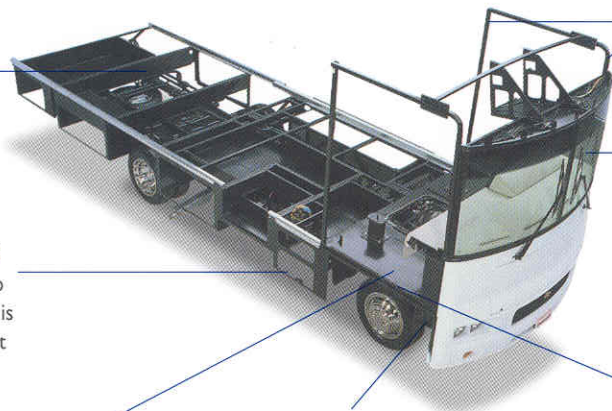
TUBULAR STEEL RISERS

feature a truss-design core for superior strength and provide a stable base for the floor structure and storage compartments.

STORAGE COMPARTMENTS

attach to outrigger assemblies so that the weight of stowed items is carried and dispersed throughout the foundation substructure.

A STEEL BARRIER separates occupants from the engine compartment. Believe it or not, less advanced designs actually use wood in this critical application.



THE ALL STEEL CAB features integral A and B pillars for added strength and stability.

WINDSHIELDS are mounted in steel with non-hardening sealants for superior strength, safety and durability. Some manufacturers actually use a rubber gasket to hold the windshield to a fiberglass cap.

THE FOUNDATION SUBSTRUCTURE ASSEMBLY

is precision-aligned to maximize strength and cross-coach support, as well as durability.

CRITICAL STEEL COMPONENTS are treated using an advanced electrodeposition coating process that provides superior corrosion protection.



1-YEAR OLD ITASCA FIBERGLASS ROOF



1-YEAR OLD COMPETITOR'S RUBBER ROOF

BUILT TO A HIGHER STANDARD. The Sunova features a crowned, one-piece fiberglass roof, backed with a 10-year limited parts and labor roof skin warranty. Fiberglass offers superior strength, attractiveness and durability over the rubber roofs found on many competitive models which can chalk, streak and degrade over time. Fiberglass also provides increased puncture and tear resistance.

COMMITTED TO SERVICE. We back our motor homes with the best service after the sale in the industry.



TRIP Saver
FAST TRACK PARTS

- 12-month/15,000-mile basic limited warranty
- 36-month/36,000-mile warranty on structure
- Standard 10-year limited parts and labor roof skin warranty
- Complimentary 24-hour roadside assistance program
- TripSaver Fast Track Parts. TripSaver guarantees that in-stock warranty parts ship directly to your dealer within 24 hours.
- National dealer service network



RECOGNIZED QUALITY. Recreation Vehicle Dealer Association members annually rate RV manufacturers on the quality of their products, and sales and service support. Winnebago Industries has achieved the coveted Quality Circle award every year since its inception, the only major motor home manufacturer to do so.



ALL MOTOR HOMES ARE NOT CREATED EQUAL.

Learn more about what sets Winnebago Industries apart. Ask your dealer for this guide. It will help you learn what makes Winnebago Industries motor homes distinctly superior to other brands.

WARNING: JOINING WIT HAS BEEN KNOWN TO CAUSE EXCESSIVE FUN.

Winnebago-Itasca Travelers (WIT) is a club for owners of Winnebago Industries motor homes. WIT is a great way to meet people and offers you:

- Caravans and rallies
- Local and state group activities
- RV travel benefits



winnebagoind.com

For Sales and Service Information Contact:



©2002 Winnebago Industries, Inc.



Printed in USA

Seat belts are your most important hookup. Always buckle up.