



Journey DL
Step up to excellence.



36LD-Vanderbilt Blue

A diesel pusher that goes above and beyond.

Looking for a diesel pusher that's not satisfied with being merely great? Are you ready for smart touches and features that give you plenty of comfort and space? Then discover the 2003 Winnebago Journey DL, a refined diesel pusher with a variety of floorplans to fit your lifestyle. The Freightliner® chassis has been specifically designed for the Journey DL with a powerful 330-hp Caterpillar® CFE 7.2L turbo-charged engine,* Allison® 3000 MH six-speed electronic transmission and advanced suspension systems for more responsive driving and handling.

Created with the serious diesel enthusiast in mind, the DL is packed with comfort-enhancing amenities, such as powered sunvisors, front and rear bedroom slideouts, ceramic tile floorcovering in the bath and galley areas, plus the RV Radio™, TrueAir™ Residential Central Air Conditioning, the OnePlace™ Systems Center and the PowerLine® Energy Management System.

If you've been looking for a diesel pusher that raises the bar and exceeds expectations, the wait is over. Step up to the Journey DL.

*32TD features a 300-hp Cummins® ISB 5.9L turbo diesel engine.

There's a lot of living in this living room.

Your living space will expand at the touch of a button with the StoreMore® slideout system. Relax as the premium Stitchcraft furniture wraps you in comfort. Choose the available leather for added luxury. Interior options include two wood and four color choices. In keeping with the functional beauty of the coach, the interior cabinetry is designed to optimize storage space and access to it. The doors and drawers also feature a catalyzed protective topcoat process that provides a highly durable, luxurious satin finish. Available dual-glazed windows and window awnings offer increased thermal efficiency while standard day/night pleated shades enable you to select from three levels of privacy.

Superior interior climate comfort is maintained with floor-ducted, forced-air heating and ceiling-ducted TrueAir Residential Central Air Conditioning. A standard heat pump provides warmth on cool mornings without running the furnace.



Entertainment central.

Entertainment begins with the 25" TV, strategically positioned in a handsome wood-faced cabinet to provide a great view from any seat in the house. The amplified antenna, video selection system, stereo VCR and available digital satellite dish let you select from network programming, movies or premium channels. Enjoy movie-theater-quality sound with 5-channel QSurrround™. Other available features include a DVD player, rear stereo system and 1,500-watt inverter/charger. The 300-watt inverter is standard, so you can enjoy your favorite programs even when you're not connected to shoreline or generator power.

Journey DL offers the flexibility in features and floorplans that experienced RVers desire. Exhibit A: the variety of available seating and dining arrangements.



Eat. Store. Snore.

The newly designed BenchMark™ Full Comfort Dinette features inner-spring seat construction for residential style and comfort. Flip up the seats for easy access to large storage areas. BenchMark also quickly converts into a comfortable bed.



Two plus two.

The dining table provides spacious dining for two, and easily expands to accommodate four place settings for entertaining guests. (Not available on the 32TD.)

For the King or Queen of the road.

The hoop-base lounge chair is a cozy rocker and a comfortable recliner with footrest. Best of all, it can be easily moved to your favorite spot when you're not traveling. Standard or available on all models.



Your table's ready.

Whether it's a cozy dinner for two, a party for four, or time for the computer, this multi-function table is ready for you. (Available on the 36GD, 36LD, 39QD and 39WD.)



Sit back and relax.

The Rest Easy™ Multi-Position Lounge offers seating flexibility and comfort.



It starts as a plush couch.



At the touch of a button, it becomes a relaxing recliner with pull-out ottoman.



Touch the button again and it's a comfortable, contoured 60" x 75" bed (Not available on the 32TD.)



Compliments to the chef.

The galley in the Journey DL features solid-surface countertops, a large Swanstone™ solid-surface sink, ceramic tile floorcovering, recessed fluorescent lighting and a separate faucet for the Everpure® water purification system. The 30" residential microwave convection oven with Sensor Cook is standard. The G.E. Advantium™ Speedcook microwave is available.



Sweet dreams.

The standard rear bedroom slideout comes with a walk-around queen-size bed, Serta® mattress and underbed storage. Passenger and driver-side windows provide cross ventilation. The spacious built-in wardrobe offers large drawers and plenty of hanging storage space. A 19" TV is corner-mounted and tucks away in its own cabinet when not in use. The 39WD features a bedroom lavatory with a sink and spacious cabinets.



Bathe yourself in light.

The skylight creates an airy atmosphere. Upscale bath features include a residential-height porcelain toilet, solid-surface countertop, molded sink, single-control brass faucet, one-piece fiberglass shower and ceramic tile floor. You can choose the available hand-held showerhead and shower seat. The 10-gallon water heater can operate on 120-volt AC or LP gas. The standard Motoraid feature uses the cooling system of the engine to give you "free" hot water in transit. The linen cabinet offers abundant storage space.

Put it on ice.
A double-door refrigerator with icemaker and the pull-out pantry cabinet are standard. A larger, four-door refrigerator is available. Select the available 1,500-watt inverter/charger and the fridge can make ice while you drive.



Plugged in.

A Black and Decker® rechargeable flashlight and vacuum are conveniently located so you won't be caught in the dark and you'll always be ready for a quick cleanup. In the bathroom, the wall-mounted hair dryer has a convenient night-light.



At your convenience.

The available built-in, combination washer/dryer features multiple wash, time and temperature cycles for a wide variety of fabrics. (Not available on the 32TD.)



Improve your circulation.

The available ceiling fan features adjustable speed control for just the right degree of coolness.



Adjustable comfort levels.

The available queen-size Sleep Number® Bed by Select Comfort™ is another Winnebago Industries exclusive. Using the hand-held remotes on each side of the bed, you can quickly and independently adjust the mattress firmness level to your ideal level of comfort and support...your Sleep Number, which is Your Key to a Perfect Night's Sleep.™



Everything's right there.

You're in command because the cockpit-style dash places precision driving controls at your fingertips. The steering wheel is sized for responsive handling and features tilt and telescoping functions. The electronic transmission controls are located on the left-side driver's panel for easy visual reference and operation. Get your bearings or the outside temperature with the electronic compass/thermometer. Bus-style power driver and passenger sunvisors are designed for years of trouble-free operation. Journey DL extras include the sliding passenger window with screen and the Sony® rearview color monitor system with one-way audio that simplifies backing and maneuvering. Front privacy curtains come with pull cords for easy opening and closing.



Take a load off.

High-back, custom-designed Stitchcraft driver and passenger cab seats provide a perfect fit. Popular upgrades include leather, six-way power assist and a convenient footrest for the passenger seat. The power stepwell cover closes at the touch of a button to create a flat floor in front of the passenger seat. The overhead cabinet has a handy CD holder.



Trip computer.

The available TripTek™ computer collects, analyzes and saves vehicle data while displaying trip information on the rear vision monitor. Displays include distance and time to destination, time traveled, fuel economy and a handy pre-trip checklist.



ONEPLACE™

One look.

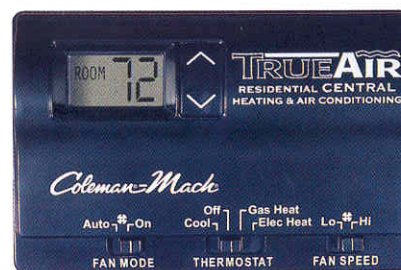
The OnePlace Systems Center puts vital switches, gauges, levels and controls in one convenient location, so you can check them at a glance.



POWERLINE™

Power manager.

Keep your electrical system running smoothly, even when operating your central air conditioning on a 30-amp. shoreline, with the PowerLine Energy Management System. It monitors onboard electrical usage and automatically minimizes the nuisance of campground circuit breaker tripping by controlling the operation of "postponable" electrical loads when demand peaks during heavy power usage. As demand is lowered, PowerLine automatically returns power to the secondary appliances and systems.



Spread the cool around. TRUEAIR™

Interior climate control has never been more precise, thanks to Winnebago Industries TrueAir Residential Central Air Conditioning. It utilizes superior cooling technology to supply optimum comfort to every part of the coach. At the heart of the system is a Coleman®-Mach® cooling unit, located below the floor line of the coach. The unit provides a low vehicle profile and center of gravity, plus reduced interior noise and easy access for service. On cool days, the available heat pump provides heat, minimizing the need to use LP.



RV-RADIO™

Designed exclusively for RV use.

Winnebago Industries engineers worked closely with the radio manufacturer to create the RV Radio—a radio designed specifically for motor home applications. Journey DL's AM/FM stereo radio has a cassette and CD player. Large control knobs and buttons are easy to operate. A weather band feature provides weather updates at the touch of a button.

Two-way radio.

For communication in the campground or added peace of mind on day trips, the four available 14-channel radios have a 2-mile range and recharge from house batteries at their built-in charging station. Nickel metal hydride batteries provide up to 15 hours of standby and 90 minutes of talk time on a single charge.





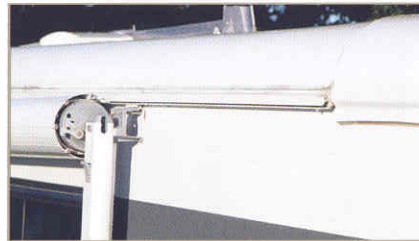
The party starts here.

Listen to your favorite music outdoors under the awning with the exterior entertainment center. A standard feature, it includes two speakers, a 12-volt power supply, TV jack and a patio table. Choose the standard AM/FM stereo with cassette or available CD player.



You've got power.

Enjoy electrical power wherever your travels take you with the standard LP-powered 6,500-watt Onan® Marquis Gold™ generator. A 7,500-watt Onan Quiet Diesel™ generator (shown) is also available on the Journey DL.



Rain, rain go away.

A rain gutter incorporated into the awning rail channels condensation and rainwater runoff away from the door and windows.



One key.

Open almost everything with one key thanks to the innovative KeyOne™ lock system. A single, double-bitted key opens most exterior compartments and doors so you won't have to fumble through a pocket full of keys. A power door lock with keyless remote is standard.



These mirrors don't miss a thing.

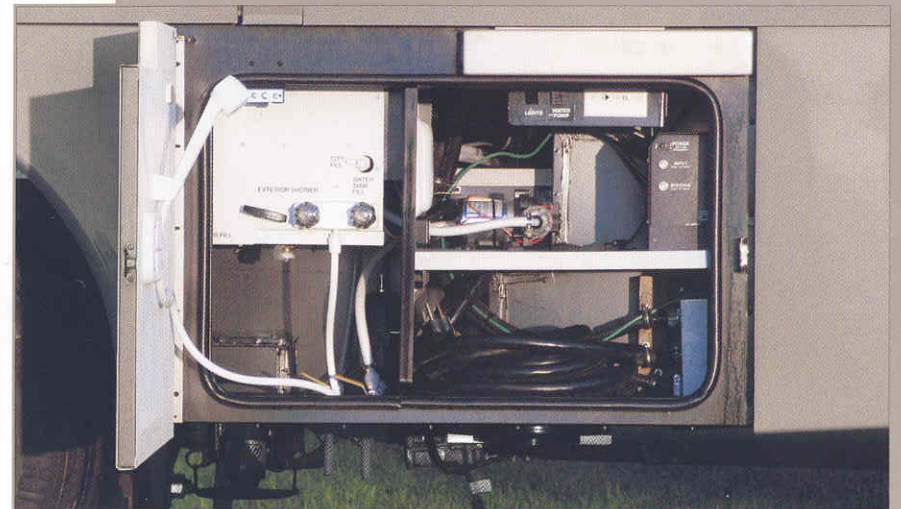
Journey DL features exterior mirrors with increased surface area. But that's only part of the story. The mirror mounting positions were designed (after extensive research) to provide the best viewing angle. The result is exterior mirrors with a greater field of vision.

Give your back a break.

StoreMore features large, well-lit exterior storage compartments that are designed to accommodate bulky and odd-shaped items. Best of all, these compartments extend along with the slideroom for easy access without crawling under the slideroom. The exterior compartment doors open easily thanks to single-paddle latches and gas struts.

Rinse here.

Service center features are user friendly. The controls are clearly labeled and positioned for ease of operation. The exterior wash station is handy for rinsing off equipment or sandy feet. Fifty-amp. electrical service is standard.



Easy maintenance.

Draining air-line system condensation is a recommended service procedure on all vehicles that utilize air brakes and air suspension. Journey DL has automatic system dryers and heated air system drains that incorporate remote lanyard controls. This eliminates the need to crawl under the chassis to perform this routine maintenance function.

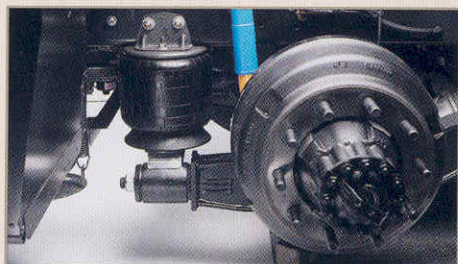


High-mounted air intake.

The fresh-air intake for the engine is positioned high on the sidewall to prevent road dust and grime from being introduced into the engine air supply. This prolongs filter life and increases engine performance.

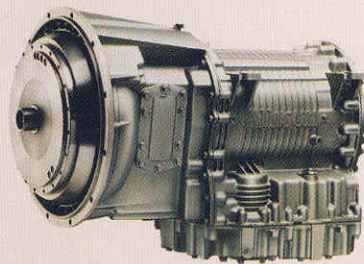
No gymnastics required.

The air filter and fluid level checkpoints are in easy-to-reach locations. An available roof-mounted spotlight features a wireless remote.



Floating on air.

The rear air suspension places larger air springs in a wide-track stance just inboard of the rear wheels. More efficient than less-advanced multiple small-bag systems, it offers optimum stability while protecting the air springs from road debris kicked up by the tires. The air spring cushions the vehicle body from the travel movement of the rear axle. As the axle moves in relation to the coach, air pressure is automatically released or introduced to the air spring to maintain the proper ride height.



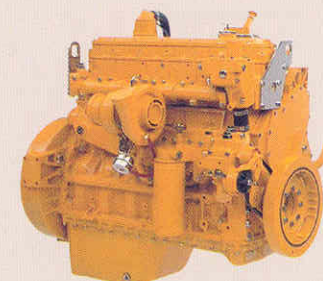
These gears adjust to yours.

The 3,000 MH six-speed Allison electronic control transmission is a proven performer. Smart logic enables it to "learn" your driving habits and fine-tune shift points accordingly for maximum performance.



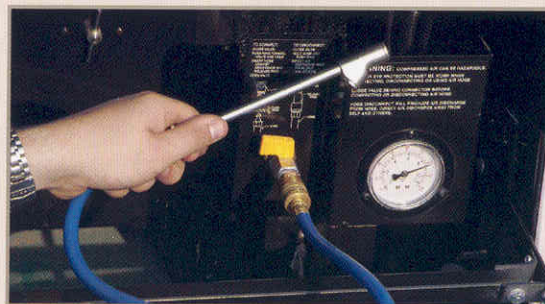
Stopping power.

Journey DL features anti-lock air brakes for improved braking in all conditions. Enjoy maximum brake feel and control thanks to the treadle foot-brake pedal mounted solidly to the steel cab deck.



More than enough horses.

Rugged diesel power provides exceptional torque and economy. Engine offerings all include advanced electronic controls for superior performance and fuel economy. They include a 300-hp ISB 5.9L Cummins in the Journey DL 32TD and a 330-hp CFE 7.2L Caterpillar engine (shown here) in all other Journey DL models. The standard engine exhaust brake enables you to use the engine to slow the vehicle, promoting longer brake life.



Auxiliary air supply.

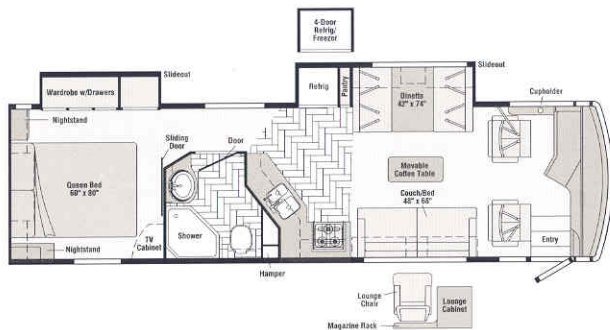
A convenient auxiliary air connection with detachable 50-ft. hose is standard and provides a ready source of compressed air.

Built to last.

When purchasing a new motor home, you may think that a chassis is a chassis. But the chassis your RV is built on has a crucial impact on your overall experience. When it comes to a chassis, the manufacturer's history of design innovation with a proven track record of performance and a nationwide service network are significant factors to consider.

The Winnebago Journey DL is exclusively offered on a Freightliner chassis, specifically designed and created for its intended RV application. Freightliner has a well-known reputation for providing top-quality chassis and vehicles. This reputation and expertise is evident as you take the wheel of a Journey DL and experience the driving comfort, responsive handling and smooth ride. On top of that, you'll have access to a network of more than 350 Freightliner chassis service centers, many open 24 hours a day, seven days a week.

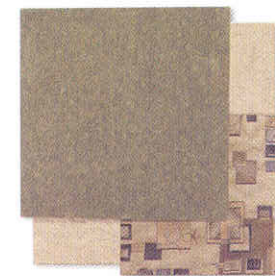




32TD

Available December 2002

- Available **BenchMark** Full Comfort Dinette
- **STOREMORE** Dinette/refrigerator slideout system
- Bedroom wardrobe slideout
- Large bath area
- Side-aisle design



Garden Path



Concert Cherry Woodgrain



Green Lawn



Palace Gate



Vanderbilt Blue



Concert Cherry Woodgrain



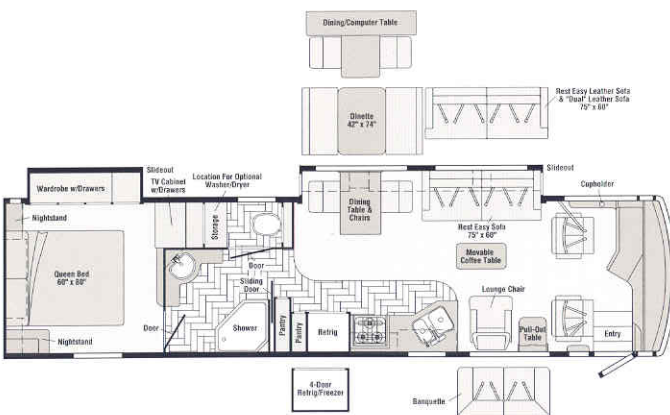
Portsmouth Oak Woodgrain



34HD

Available **BenchMark** Full Comfort Dinette

- Sofa/galley **STOREMORE** slideout system
- Split bath design w/private toilet area
- Bedroom wardrobe slideout
- **Rear Easy** Multi-Position Lounge
- Movable hoop-base lounge chair



36GD

Available November 2002

- Available **BenchMark** Full Comfort Dinette
- **STOREMORE** Sofa/dining table slideout system
- Spacious bath w/private toilet area
- Bedroom wardrobe slideout
- **Rear Easy** Multi-Position Lounge
- Movable hoop-base lounge chair



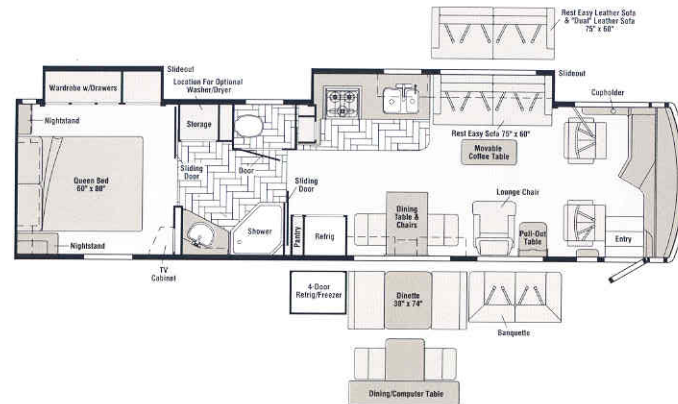
Ceramic Tile Floorcovering





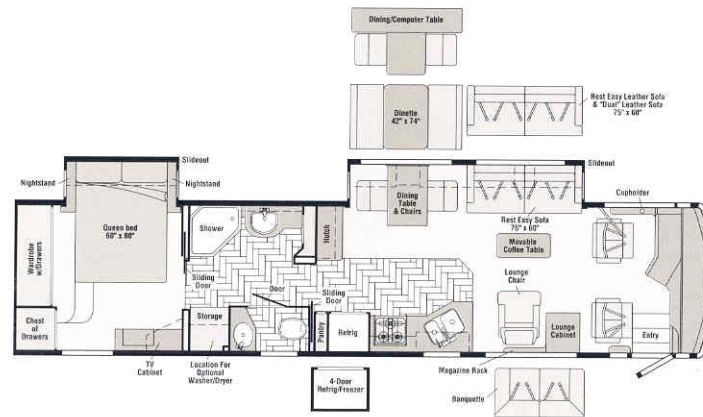
Seat Belts




Note: Dimensions shown are for sleeping space only and may vary due to styling differences. Dashed lines denote overhead storage areas.

JOURNEY DL FLOORPLANS

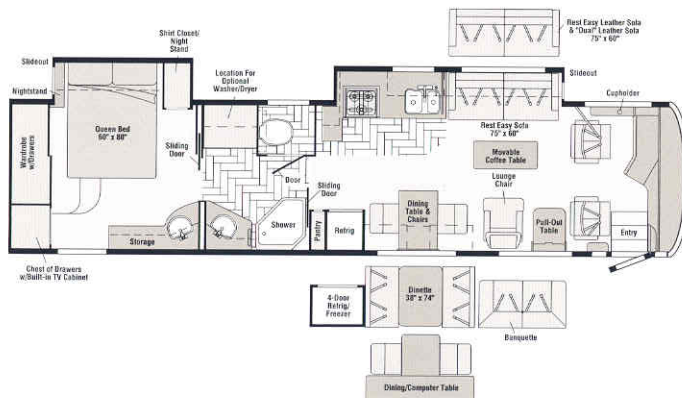



- Available  Full Comfort Dinette
- Sofa/galley  slideout system
- Split bath design w/private toilet area
- Bedroom wardrobe slideout and large bath area wardrobe
-  Multi-Position Lounge
- Movable hoop-base lounge chair



- Available  Full Comfort Dinette
- Sofa/dining table  slideout system
- Bed slideout w/large rear wardrobe
-  Multi-Position Lounge
- Movable hoop-base lounge chair

Auburn



- Sofa/galley **STOREMORE** slideout system
- Split bath design w/private toilet area
- Bed slideout w/large rear wardrobe
-  Multi-Position Lounge
- Movable hoop-base lounge chair



The outside story.

Journey DL's one-piece fiberglass sidewall is high gloss and amazingly tough—typical for Winnebago Industries design. Laterally mounted floor risers allow for true basement storage. Standard features include hydraulic jacks to keep your Journey DL super-stable and level when parked, stainless steel wheel liners to resist corrosion over the long haul and a 10,000-lb. drawbar. A full-width, rear mud guard is available.

2003 Winnebago Journey® DL Specifications

	32TD	34HD	36GD	36LD	39QD	39WD
Length	32'8"	34'9"	36'5"	36'5"	39'4"	39'4"
Exterior Height*	11'8"	11'10"	11'8"	11'10"	11'9"	11'9"
Exterior Width ^Δ	8'5.5"	8'5.5"	8'5.5"	8'5.5"	8'5.5"	8'5.5"
Exterior Storage [∞] (cu. ft.)	82.3	92.3	107.0	116.0	145.0	145.0
Interior Height	6'8"	6'8"	6'8"	6'8"	6'8"	6'8"
Interior Width	8'0.5"	8'0.5"	8'0.5"	8'0.5"	8'0.5"	8'0.5"
Fresh Water Cap. w/Heater* (gal.)	96	96	96	96	96	96
Holding Tank Cap. - Black/Gray (gal.)	52/42	48/52	52/48	48/52	52/48	52/48
LP Cap. ^Δ (gal.)	39	39	39	39	39	39
Fuel Cap. (gal.)	90	90	90	90	90	90
GCWR (lbs.)	36,850	36,850	36,850	36,850	37,910	37,910
GVWR (lbs.)	26,850	26,850	26,850	26,850	27,910	27,910
GAWR - Front (lbs.)	9,350	9,350	9,350	9,350	10,410	10,410
GAWR - Rear (lbs.)	17,500	17,500	17,500	17,500	17,500	17,500
Wheelbase	190"	208"	228"	228"	262"	262"

Standard - S Optional - O

AUTOMOTIVE/CHASSIS

Chassis - Freightliner, Cummins ISB 5.9L turbo-charged diesel 300-hp, rear radiator, Allison 6-speed electronic 3,000 MH transmission, NeWay® front and rear, air suspension, 160-amp. alternator, exhaust brake, 4-wheel ABS

Chassis - Freightliner, Caterpillar 7.2L turbo-charged diesel 330-hp, rear radiator, Allison 6-speed electronic 3,000 MH transmission, NeWay front and rear, air suspension, 160-amp. alternator, exhaust catalyst, exhaust brake, 4-wheel ABS

Air Accessory Manifold quick connect, 50' air hose, pressure gauge, manual air shut off, **Leveling Jacks** hydraulic, manual control, **Tire Tools** wrench & leverage bar, **Trailer Hitch** □ 10,000-lb. drawbar/500-lb. maximum vertical tongue weight & wiring

Wheels stylized aluminum

Wheel Liners stainless steel

CAB AREA & DRIVER CONVENIENCES

Cab Seats (fabric) w/3-point adjustable seat belts, armrests, lumbar support (driver), multi-adjustable slide/recline & swivel, **Compass** electronic w/outdoor thermometer, **Console Center Cabinet**, **Cruise Control**, **Defroster Fans** (2) auxiliary 2-speed w/instrument panel switch, **Exhaust Brake Switch**, **Floor Mat** carpet, **Hood Release**, **Map Lights**, **Monitor System** rearview color w/single camera & 1-way audio, Sony **Power Door Locks** keyless entry w/remote, **Powerpoints** (2) 12-volt, **Shades** light filtering, cab windows, **Steering Wheel** tilt w/power assist, **Sunvisors** (2) powered, **Window** (driver) full slider w/screen, **Window** (passenger) partial slider w/screen, dual-glazed, **Windshield Wipers** intermittent

Cab Seat* 6-way power assist (driver)

	32TD	34HD	36GD	36LD	39QD	39WD
Cab Seat* 6-way power assist (driver & passenger)	O	O	O	O	O	O
Cab Seats leather seating surface	O	O	O	O	O	O
Cab Seat* passenger seat w/footrest	O	O	O	O	O	O
Spotlight roof-mounted w/wireless remote	O	O	O	O	O	O
Trip Computer TripTek	O	O	O	O	O	O

ENTERTAINMENT

CB Prep (includes antenna, antenna lead, 12-volt power supply), **CD Holder**, **Entertainment Center** (Exterior) w/Cassette DC receptacle, AC duplex receptacle, AM/FM radio, TV jack, radio antenna, speakers (2), table, lockable compartment, **Radio** (Cab) AM/FM stereo cassette/CD, roof-mounted flexible rubber antenna, speakers (4), weather band, **Radio Power Switch** main/auxiliary battery, **Satellite System Ready**, Telephone input & interior jacks, **TV 19" Color AC** w/remote, bedroom, **TV 25" Color AC** w/remote, front, **TV Enhancement Package** antenna (amplified), interior jack(s), coax wiring, cable input, exterior jack, reminder light, **VCR** w/remote, **Video Selection System**

Compact Multi-disc Changer Sony w/remote

DVD Player*

Entertainment Center (Exterior) w/CD Player DC receptacle, AC duplex receptacle, AM/FM radio w/remote, TV jack, radio antenna, speakers (2), lockable compartment, table

Radios (4) 2-way

Satellite Dish Antenna RV digital, elevation sensing unit

Sound System deluxe, w/5-channel QS surround sound, TV 25" stereo color AC, stereo VCR, amplifier, cube speakers (5), bass speakers (2)

Stereo System (Bedroom)* AM/FM cassette, alarm clock

Stereo System (Bedroom)* AM/FM CD player, alarm clock

INTERIOR

Accessory Package rechargeable flashlight, rechargeable hand-held vacuum cleaner, **Ceiling** fabric, **Curtain** front wraparound, pleated w/pull cords, **Light** wall lamp, **Lights** ceiling w/wall switches, incandescent, **Lights** fluorescent lights, recessed, galley, dinette, lounge w/2-way wall switches, **Lights** reading, auxiliary, **Shades** pleated, day/night, **Sliding Stepwell Cover Panel** powered

Ceiling Fan

Cupholder(s)

Mirror

Picture

Windows dual-glazed/thermo-insulated

CABINETY

Woodgrain Portsmouth Oak stile-and-rail construction w/raised panel inserts on doors

Woodgrain Concert Cherry stile-and-rail construction w/raised panel inserts on doors

COUNTERTOPS

Solid-Surface galley & bath

	32TD	34HD	36GD	36LD	39QD	39WD
CB Prep (includes antenna, antenna lead, 12-volt power supply), CD Holder , Entertainment Center (Exterior) w/Cassette DC receptacle, AC duplex receptacle, AM/FM radio, TV jack, radio antenna, speakers (2), table, lockable compartment, Radio (Cab) AM/FM stereo cassette/CD, roof-mounted flexible rubber antenna, speakers (4), weather band, Radio Power Switch main/auxiliary battery, Satellite System Ready , Telephone input & interior jacks, TV 19" Color AC w/remote, bedroom, TV 25" Color AC w/remote, front, TV Enhancement Package antenna (amplified), interior jack(s), coax wiring, cable input, exterior jack, reminder light, VCR w/remote, Video Selection System	\$	\$	\$	\$	\$	\$
Compact Multi-disc Changer Sony w/remote	O	O	O	O	O	O
DVD Player*	O	O	O	O	O	O
Entertainment Center (Exterior) w/CD Player DC receptacle, AC duplex receptacle, AM/FM radio w/remote, TV jack, radio antenna, speakers (2), lockable compartment, table	O	O	O	O	O	O
Radios (4) 2-way	O	O	O	O	O	O
Satellite Dish Antenna RV digital, elevation sensing unit	O	O	O	O	O	O
Sound System deluxe, w/5-channel QS surround sound, TV 25" stereo color AC, stereo VCR, amplifier, cube speakers (5), bass speakers (2)	O	O	O	O	O	O
Stereo System (Bedroom)* AM/FM cassette, alarm clock	O	O	O	O	O	O
Stereo System (Bedroom)* AM/FM CD player, alarm clock	O	O	O	O	O	O
Accessory Package rechargeable flashlight, rechargeable hand-held vacuum cleaner, Ceiling fabric, Curtain front wraparound, pleated w/pull cords, Light wall lamp, Lights ceiling w/wall switches, incandescent, Lights fluorescent lights, recessed, galley, dinette, lounge w/2-way wall switches, Lights reading, auxiliary, Shades pleated, day/night, Sliding Stepwell Cover Panel powered	\$	\$	\$	\$	\$	\$
Ceiling Fan	O	O	O	O	O	O
Cupholder(s)	\$	\$	\$	\$	\$	\$
Mirror	\$	\$	\$	\$	\$	\$
Picture	O	O	O	O	O	O
Windows dual-glazed/thermo-insulated	O	O	O	O	O	O
Woodgrain Portsmouth Oak stile-and-rail construction w/raised panel inserts on doors	O	O	O	O	O	O
Woodgrain Concert Cherry stile-and-rail construction w/raised panel inserts on doors	O	O	O	O	O	O
COUNTERTOPS	\$	\$	\$	\$	\$	\$
Solid-Surface galley & bath	O	O	O	O	O	O

Standard - S Optional - O

FLOORCOVERING

Carpeting w/pad, **Ceramic Tile** galley & bath

FURNITURE

Table coffee	S	S	S	S	S	S
Banquette* (fabric) w/throw pillows, or Banquette* (leather) w/throw pillows		O	O	O	O	O
Chair lounge (hoop-base) w/magazine rack & cabinet	O				S	
Chair lounge (hoop-base) w/magazine rack & cabinet w/table		S	S	S		S
Lounge Chair* (leather)	O	O	O	O	O	O
BenchMark Full Comfort Dinette w/access to storage below	S	O	O	O	O	O
Dining Table & chairs (2) free standing, (2) folding		S	S	S	S	S
Multi-function Table & chairs (2) free standing, (2) folding			O	O	O	O
Hutch					S	
Couch (fabric) w/throw pillows	S					
Couch (leather) w/throw pillows	O					
REST EASY Multi-Position Lounge* (fabric) w/throw pillow(s)		S	S	S	S	S
REST EASY Multi-Position Lounge* (leather) w/dual recliners		O	O	O	O	O
REST EASY Multi-Position Lounge* (leather)		O	O	O	O	O

GALLEY

Coffeemaker, Faucet single-control w/pull-out sprayer, Moen,* Light fluorescent under cabinet, Microwave/Convection Oven w/Range Fan exterior vent, residential 30", Sharp,* Pantry* slideout, Range Cover flush-mounted, bi-fold (countertop material), Range Top 3-burner w/storage below, recessed, sealed burners, Amana,* Refrigerator/Freezer large double-door w/ceemaker, Norcold,* Roof Vent powered ventilator fan, Silverware Tray , Sink double, molded Swanstone, w/sink covers (countertop material), Towel Rack wire, Wastepaper Basket , Water Purification System Everpure	S	S	S	S	S	S
Appliance Storage Cabinet		S				
Magazine Rack*					S	
Microwave/Speedcook Oven w/range fan, residential 30", G.E. Advantium	O	O	O	O	O	O
Mirror		S				
Range 3-burner w/large oven, glass door w/storage below, recessed, sealed burners, Amana	O	O	O	O	O	O
Refrigerator/Freezer* 4-door w/ceemaker, Norcold	O	O	O	O	O	O
Spice Rack		S				
Utility Tray tip-out	S	S		S		S
Wall Border	S		S	S	S	S

BATH

Cabinet lavatory, Cabinet linen, Faucet(s) (lavatory) dual-control, Phoenix,* Faucet (shower) single-control w/ixed showerhead, Hair Dryer wall-mounted w/night-light, Light shower, Lights makeup, Roof Vent , insulated, power, Shower w/wall surround, Shower Door textured glass, Skylight , Sink oval, Tissue Holder , Toilet porcelain, w/foot-pedal flush & sprayer, Towel Rack 3-rod	S	S	S	S	S	S
Fold-down Shower Seat, Hand-held Showerhead	O	O	O	O	O	O
Hamper tip-out	S	S				
Magazine Rack			S	S	S	S
Medicine Cabinet	S					
Mirror		S	S			
Mirror frameless w/beveled edge			S		S	
Robe Hook		S	S	S	S	S
Sink oval, private toilet area	S	S		S	S	S
Towel Bar	S	S	S	S	S	S
Towel Ring	S		S			
Wall Border	S		S		S	

BEDROOM

Bed queen, Serta, innerspring w/underbed storage, Bedsprad , Pillows , Throw Pillow , Headboard , Ceiling Molding , Lights reading, Light decorative ceiling light w/dimmer, Nightstand(s) , Powerpoint 12-volt receptacle, Wall Border , Wardrobe Cabinet carpeted floor, clothes rod, drawers, light	S	S	S	S	S	S
Cabinet lavatory, Cabinet medicine, Faucet (lavatory) single-control						S
Light decorative fluorescent light			S			

- * The height of each model is based on the curb weight of a typically equipped unit on the standard chassis. The actual height of your vehicle may vary by as much as 2" depending on chassis or equipment variations.
- Δ Journey DL floorplans feature a wide-body design—over 96" In making your purchase decision, you should be aware that some states restrict access on some or all state roads to 96" in body width. Before making your purchase decision, you should confirm the road usage laws in the states of interest to you. ∞ Your motor home's load capacity is designated by weight, not by volume, so you cannot necessarily use all available space when loading your motor home.
- ⊕ Capacities shown are tank manufacturer's listed water capacity (W.C.). Actual filled LP capacity is 80% of listing due to overfilling prevention device on tank. *Not all items available in combination. See dealer for details. **See your dealer for complete warranty information.
- Actual towing capacity is dependent on your particular loading and towing circumstances, which includes the GVWR, GAWR and GCWR as well as adequate trailer brakes. Please refer to your vehicle's operator's manual for further towing information.
- Winnebago Industries' continuing program of product improvement makes specifications, equipment, model availability and prices subject to change without notice. Comparisons to other motor homes are based on the most recent information available.

	32TD	34HD	36GD	36LD	39QD	39WD
Light decorative table lamp	S	S	S	S		
Light decorative wall lamp	S	S	S	S	S	
Lights makeup, Sink oval						S
Sleep Number queen-size mattress by Select Comfort	O	O	O	O	O	O
Towel Ring						S
Mirror	S	S	S	S		
Vanity Cabinet w/tip-up countertop, folding chair, attached mirror					S	

EXTERIOR

Awning slideroom cover, Awning* patio, entrance door, Awning Rails w/rain gutters, Door entrance w/separate screen door, deadbolt lock, Entrance Door Step single, electric w/doorjamb switch, Exterior Graphics Packages Medium Titanium Metallic over Sand Metallic recommended w/Garden Path, Green Lawn, Palace Gate or Vanderbilt Blue; Sand Metallic over Wineberry Metallic recommended w/Palace Gate, Garden Path or Vanderbilt Blue; Sand Metallic over Medium Titanium Metallic recommended w/Palace Gate, Garden Path or Vanderbilt Blue, Ladder , Lights fog lamps, Light porch w/interior switch, Light under hood, Lights compartment, Light service, driver side, Locking Fuel-fill Door , Mirrors electric remote w/defrost, Mud Flaps (2) rear, Mud Guard full width, rear, Receptacle AC duplex, Sidewall Skin 1-piece smooth fiberglass, high-gloss, Storage Compartments smooth valance panels, trunk liner, gas cylinders, TriMark* KeyOne System, paddle latch, lights	S	S	S	S	S	S
Air Horns roof-mounted, Awning* patio, entrance door, electric	O	O	O	O	O	O
Awning* windows, Undercoating	O	O	O	O	O	O
Full body paint option available in early 2003. Full Body Paint Option Mocha recommended with Garden Path, Green Lawn, Palace Gate and Vanderbilt Blue. Auburn recommended with Palace Gate or Vanderbilt Blue. Blue Lake recommended with Vanderbilt Blue.	O	O	O	O	O	O

SYSTEMS

Automotive Heater/Air Conditioner, Auxiliary Start Circuit, Batteries (Coach) (2)* deep cycle, Battery (Coach) disconnect system, Battery Charge Control automatic dual, TRUEAIR® Central Air Conditioning System, Central Air Heat Pump, Drain 1 1/2" water tank, Electrical Distribution System AC & DC breaker panels, 55-amp. electronic converter/charger,* Generator 6,500-watt, Onan Marquis Gold, LP, Generator/Shoreline Automatic Changeover Switch , Inverter* DC/AC, 300-watt, ONEPLACE Systems Center wall-mount, battery digital voltmeter, POWERLINE energy management display, generator hourmeter gauge, generator start/stop switch, heating/A/C thermostat, holding tank levels, LP tank level, solar panel/battery charger light,* water heater switch, water heater on light & pilot indicator light, water pump switch, water tank level, Power Cord 50-amp., POWERLINE Energy Management System, Service Center (Drainage) drainage valves, holding tank flushing system, 10" sewer hose, Service Center (Electrical/Water) cable inputs, city water hookup/tank diverter fill, drain for fresh water system, exterior wash station w/pump switch, power cord, shoreline/generator automatic changeover switch, telephone input, Solar Panel 10-watt battery charger, Tank flushing system, black tank only, Tank holding, heated compartment, Tank LP, permanent mount w/gauge, Water Heater 10-gallon electronic ignition, LP gas/110 vac w/Motoraid, Water Heater Winterization Bypass Valve manual, Water Hookup city, Wash Station exterior, Water Pump demand w/accumulator tank, Water System Winterizing Valve manual, Water Tank Fill pressurized city hookup w/diverter valve, Water Tank Fill w/locking door	S	S	S	S	S	S
Furnace 35,000 BTU, low profile		S	S	S	S	S
Furnace 40,000 BTU, low profile		S	S	S	S	S
Generator 7,500-watt, Onan Quiet Diesel	O	O	O	O	O	O
Inverter/Charger* DC/AC, 1,500-watt w/remote panel	O	O	O	O	O	O
Washer/Dryer Prep		S	S	S	S	S
Washer/Dryer Combination		O	O	O	O	O
Water System Winterizing Kit automatic	O	O	O	O	O	O

SLIDEOUT

Slideout Room rear bedroom w/slideroom cover	S	S	S	S	S	S
Slideout Room couch/dining table w/slideroom cover, FREEFORM®			S		S	
Slideout Room couch/galley w/slideroom cover, FREEFORM®			S		S	S
Slideout Room refrigerator/dinette w/slideroom cover, FREEFORM®	S					

SAFETY

Assist Bar(s) interior, Assist Handle exterior, acrylic, Bumpers front & rear, Detectors/Alarms LP leak, smoke, carbon monoxide, Fire Extinguisher 10 B.C., Ground Fault Interrupter , Light center high-mount brake lamp, Lights(s) courtesy w/wall switch(es), Seat Belts cab, 3-point, Seat Belts lap (in selected areas), Window escape, Windshield laminated safety glass	S	S	S	S	S	S
--	---	---	---	---	---	---

WARRANTY

12-month/15,000-mile basic limited warranty, 36-month/36,000-mile warranty on structure,**	S	S	S	S	S	S
10-year limited parts & labor warranty on roof skin						

Not all motor homes are created equal.

As you take a closer look, you'll see that there is much more to the Winnebago Journey DL than a long list of standard features and compelling floorplans. Beneath it all you'll find a SuperStructure™ foundation of strength and durability, and Winnebago Industries' recognized service and warranty support.



We are committed to service.

We back our motor homes with the best after-the-sale service in the industry.

- 12-month/15,000-mile basic limited warranty
- 36-month/36,000-mile warranty on structure
- Standard 10-year limited parts-and-labor roof skin warranty
- Complimentary 24-hour Roadside Assistance Program
- TripSaver Fast Track Parts. TripSaver guarantees that in-stock warranty parts ship directly to your dealer within 24 hours
- Nationwide Dealer service network



Certified quality.

Recreation Vehicle Dealer Association members annually rate RV manufacturers on the quality of their products, and on their sales and service support. Winnebago Industries has achieved the coveted Quality Circle Award every year since its inception, the only major motor home manufacturer to do so.



Learn more about what sets Winnebago Industries apart.

Ask your dealer for this guide. It will help you learn what makes Winnebago Industries motor homes distinctly superior to other brands.

Warning: Joining WIT has been known to cause excessive fun.



Winnebago-Itasca Travelers (WIT) is a club for owners of Winnebago Industries motor homes. WIT is a great way to meet people and offers you:

- Caravans and rallies
- Local and state group activities
- Benefits for RVers



©2002 Winnebago Industries, Inc., Forest City, IA 50436. Printed in USA.

Seat belts are your most important hookup. Always buckle up.
Visit us at www.winnebagoind.com

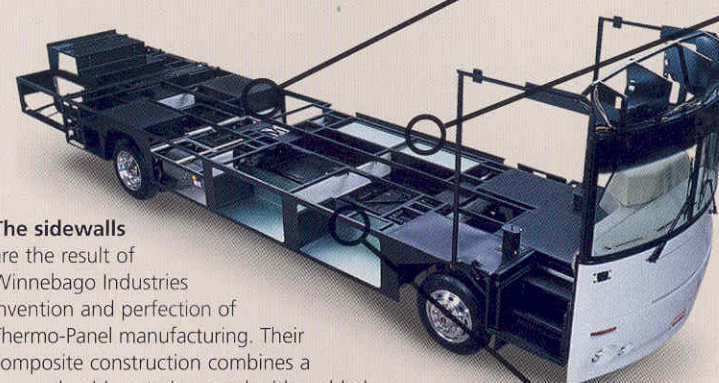


is the term given to Winnebago Industries' structural motor home design and construction. Rather than a single component, it is the culmination of design integration that incorporates steel and aluminum substructures, composite design laminated floor risers, interlocking joint technology, and Thermo-Panel® floor, roof and side-walls to form a high-strength, durable vehicle body.

Interlocking joint construction utilizes advanced extruded aluminum structural components to create integrated floor-to-sidewall, and sidewall-to-roof joints. This design effectively distributes the weight of the walls and roof, making a stronger and more durable body than competitor designs that rely on screws to carry the weight.

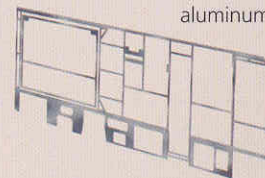


Laminated risers feature a welded aluminum core for superior strength and provide a stable base for the floor structure and storage compartments.



The foundation substructure assembly is precision-aligned to maximize strength and cross-coach support as well as durability.

The sidewalls are the result of Winnebago Industries invention and perfection of Thermo-Panel manufacturing. Their composite construction combines a durable exterior panel with welded aluminum support substructures.



The substructures are embedded in a high-density block foam insulation core to create a strong, durable, yet lightweight sidewall.

Critical steel components are treated using an advanced electrodeposition coating process that provides superior corrosion protection.

Built to a higher standard.

Journey DL features a crowned, one-piece fiberglass roof backed with a 10-year limited parts-and-labor roof skin warranty. Fiberglass offers superior strength, attractiveness and durability over rubber roofs found on many competitive models. Over time, rubber roofs are susceptible to chalking, streaking and degradation, and have less puncture and tear resistance than fiberglass.



One-year-old competitor's rubber roof



One-year-old Winnebago Industries fiberglass roof