

A classier
Class A.





34D-Sagebrush with Portsmouth Oak

Make it yours.

Winnebago quality, floorplan variety and innovative features set this Class A motor home apart. The 2004 Brave is packed with upscale standard features such as the BenchMark™ Full Comfort Dinette, StoreMore® slideout system, RV Radio®, 25" stereo TV, automatic generator changeover switch and a driver's entry door. You'll find vinyl plank flooring in the galley and entrance area (not available on the 36M) makes for easy cleanups.

With available features like the dining table with four chairs (not available on the 30W); dual-glazed, thermo-insulated windows; dash-mounted workstation; and 50-amp. electrical service (not available on the 30W), you can tailor the Brave to your whims. You will notice these and many other key features pictured in this brochure, along with informative text. We provide this detailed information so you can better select the features that will make the Brave perfect for you.

Sweet dreams.

The rear slideroom creates a spacious bedroom area with walk-around queen bed and Serta® mattress. A large wardrobe with mirrored doors and lower drawers provides more than ample storage, as does the easy-to-access underbed storage area.



34D-Sagebrush with Portsmouth Oak

Room to roam.

In addition to the spaciousness provided by the front StoreMore slideroom, all Brave models feature a rear bedroom with large wardrobes. Cabinet doors feature the beauty and added protection of a catalyzed finish typically found in the cabinetry of finer homes. Enjoy the comfort of the custom Stitchcraft furniture as you relax after a day of travel or exploring.

There is also plenty of lighting placed right where you need it, all controlled via large, easy-to-operate wall switches. Ceiling-ducted air conditioning delivers precise cooling and improved airflow throughout the coach. An available heat pump eliminates the early morning chill without starting up the furnace. The furnace has been redesigned for even quieter operation. Below-floor ducting distributes warm air evenly and efficiently. The available dual-pane, thermo-insulated windows add even more efficiency and are covered with attractive day/night pleated shades. A 50-amp. electrical system is available on every model except the 30W.



32V-Sand Frost with Portsmouth Oak

Enjoy the view.

And it's a great one; whether you're watching your favorite program or movie on the large 25" stereo TV or available combination stereo VCR/DVD, you're sure to be happy with your choice. And speaking of choices, with the video selection system, you can easily select cable, movie or satellite input. There's even an available 300-watt inverter that provides 110-volt power to the TV and VCR/DVD when shoreline or generator power is not available. The Brave is also digital satellite system ready, so you can choose it now or add it later.

Enjoy all your entertainment options in the hoop-base recliner. Reposition it anywhere you want when the motor home is parked. It rocks, reclines and has a footrest. The recliner is standard on the 32V, 34D, 36M and available on the 30W.



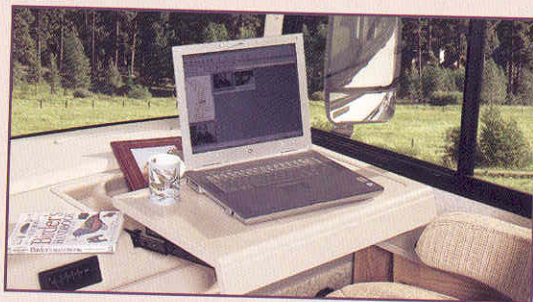
Bed and breakfast.

The BenchMark Full Comfort Dinette features innerspring seat construction for residential comfort. Flip up the seats for easy access to large storage areas. BenchMark also quickly converts into a comfortable bed. A dining table with chairs is available in place of the BenchMark on the 32V, 34D and 36M.



Well-designed bath areas.

The spacious bath is designed with you in mind. A Moen® single-control faucet with Posi-Temp® reduces water temperature fluctuations for a perfect shower every time. The available bathroom upgrade package includes a fold-down shower seat and hand-held showerhead. Choose the available 110-volt/LP water heater in place of the standard LP-only system for added flexibility. The Motoraid feature provides hot water when traveling without firing up the LP water heater.



Write place.

Write letters, play cards or work on your laptop computer with the available passenger-side workstation. The driver and passenger seats feature adjustable armrest, recline, swivel, and adjustable lumbar support. A leather upgrade is available.



SIRIUS

Upgrade your listening choices with Sirius™ Satellite Radio programming (requires the satellite-ready radio available fall 2003). It offers 100 channels of digital entertainment. High-altitude satellites deliver crystal clear satellite programming anywhere in the U.S. with no signal fades. (Sirius Satellite Radio programming requires a subscription.)



This radio's a wow.

The RV Radio features large control knobs, easy-to-operate buttons and AM/FM stereo cassette/CD player with remote. The built-in weather band feature provides weather updates at the touch of a button. The radio power switch allows you to choose between chassis or house batteries to power your RV Radio. A compact multi-disc changer is also available.

Smart dash.

One of the first things you'll notice when sitting behind the wheel is that the controls, switches and gauges are all sized and positioned for easy operation. The available rearview Sony® black-and-white monitor system includes one-way audio for safe backing and maneuvering. The dash even flips up for ease of service and quick access.



Now you're cooking.

With a three-burner Magic Chef® range/oven and a 30" microwave oven with range fan, you'll be cooking. A solid-surface countertop and pantry storage with adjustable shelves are standard. The molded double sink is sized to accommodate large dishes and it's also stain resistant. The single-control faucet includes a cold water purification system. A double-door fridge is standard, while a larger four-door model is available on the 34D and 36M.



Sit back. Relax.

It's a couch. It's a recliner. It's a bed. It's all three. It's the Rest Easy® Multi-Position Lounge. At the touch of a button, it goes from a couch to a recliner with pull-out ottoman. Touch the button again and it's a 60" x 75" bed. (Standard on the 32V, 34D and 36M.)



Cirrus Blue Metallic

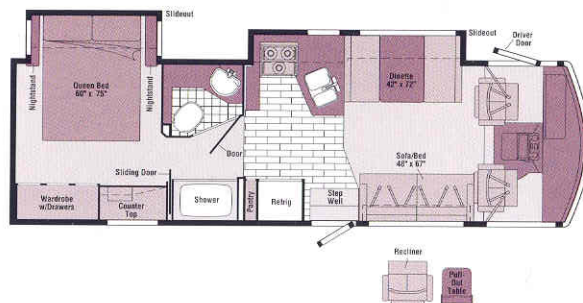


Warm Silver Metallic

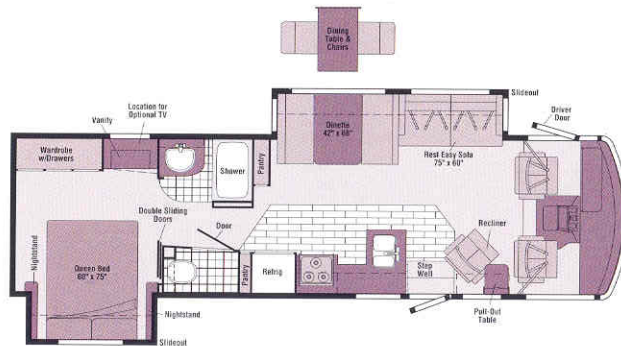
It's great outside.

Brave's one-piece fiberglass sidewalls are amazingly tough—typical Winnebago Industries' design. The DuPont® FlexShield™ basecoat/clearcoat is a low-maintenance, high-gloss finish with maximum durability and resistance. Standard exterior features include a 5,000-lb. trailer hydraulic jacks with touchpad controls for added stability when parked. A patio awning for instant shade is available!

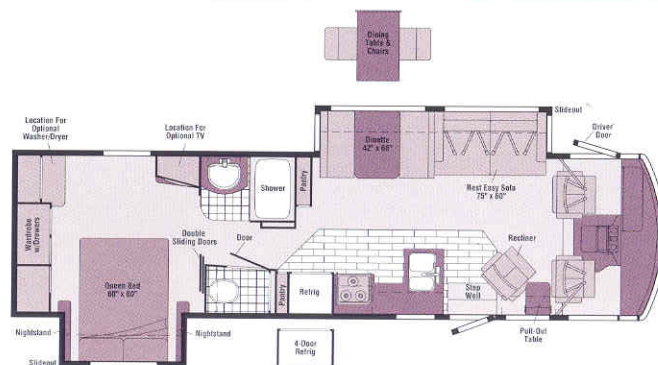
FLOORPLANS



Model 30W



Model 32V



Model 34D

INTERIORS



Alpine Blue

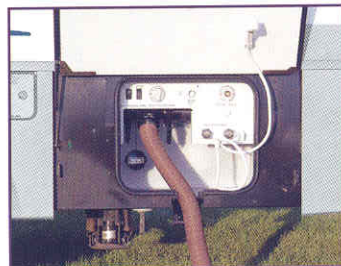


Sagebrush



Seat Belts

Note: Dimensions shown are for sleeping space only and may vary due to styling differences. Dashed lines denote overhead storage areas.



Say goodbye to wrestling cords and hoses through small holes. The new QuickPort™ Service Connection Hatch features slots for power cords and hoses that make hookups a snap. And the compartment is enclosed to protect hookups from road grime and dirt.



We don't overlook even the smallest detail: Brave's innovative built-in rain gutter funnels water away from the entrance door and windows to help keep your coach looking clean and streak free.



For communication in the campground or peace of mind on day trips, the four available two-way radios recharge from the coach's house batteries at their built-in charging station. The nickel-metal hydride batteries provide up to 15 hours of standby and 90 minutes of talk time on a single charge.



Brave's available exterior entertainment center includes an AM/FM stereo with antenna, CD player, 12-volt DC receptacle, TV jack, 110-volt outlet and speakers. Compartment locks securely.



Exterior mirrors feature large, flat and convex surfaces for expanded visibility and safety. They come with standard electric remote controls, which also include a defrost function.



Standard generator offerings include a 4,000-watt Onan® MicroQuiet™ on the 30W and a 5,500-watt Onan Marquis Gold™ on the 32V, 34D and 36M. A 7,000-watt Onan Marquis Gold is also available on all models. An automatic changeover switch is also standard, so there's no need to switch the power cord connection to run the generator.



With the StoreMore slideout system, exterior compartments extend along with the slideout, thus making it easier to retrieve stored items. There's plenty of room here for large or oddly shaped items. Storage compartments feature doors with one-piece aluminum exterior panels for superior strength and durability. They also incorporate single-paddle latches and gas struts for easy opening.



Check and operate important functions such as tank levels, water pump and battery power with the flush-mounted monitor panel.



PowerLine[®] helps you manage it. This silent, fully automated energy management system monitors electrical usage and cycles appliances off if demand exceeds available supply and cycles them on again once the power load is reduced. It also allows you to run two roof air conditioners on a 30-amp. shoreline circuit without worrying about system overload. (Standard on the 32V, 34D and 36M; available on the 30W.)



Brave makes use of the Key System. Just one double-bit key, which can be inserted in either direction, opens most door storage compartments. What could be simpler?

2004 Winnebago Brave® Specifications

	30W	32V	34D	36M
Length	30'11"	32'11"	34'5"	35'11"
Exterior Height w/A/C ^a – Ford/Workhorse ^f	11'10" or 12'1"/12'0"	11'10" or 12'1"/11'10"	11'11" or 12'2"/12'1"	11'10" or 12'1"/12'1"
Exterior Width ^b	8'6"	8'6"	8'6"	8'6"
Exterior Storage ^f – Ford/Workhorse (cu. ft.) ^c	70.6/70.6	78.6/74.8	94.7/94.7	120.3/120.3
Interior Height	6'8"	6'8"	6'8"	6'8"
Interior Width	8'5"	8'5"	8'5"	8'5"
Fresh Water Capacity w/Heater ^d – Ford/Workhorse (gal.)	84/84	86 ^k /86 ^m /64 ⁿ	86/86	76/76
Hold Tank Capacity – Black/Gray (gal.)	40/54	50/45	50/45	40/67
LP Capacity ^e (gal.)	23	28	28	28
Fuel Capacity – Ford/Workhorse (gal.)	75/75	75/75	75/75	75/75
GCWR – Ford//Workhorse (lbs.) ^g	26,000 ^k //22,000 ^m /26,000 ⁿ	26,000 ^k //22,000 ^m /26,000 ⁿ	26,000 ⁱ //26,000 ⁿ	26,000 ⁱ /26,000 ^k //26,000 ⁿ /26,000 ⁿ
GVWR – Ford//Workhorse (lbs.)	20,500 ^k //18,000 ^m /20,700 ⁿ	20,500 ^k //18,000 ^m /20,700 ⁿ	20,500 ⁱ //20,700 ⁿ	20,500 ⁱ /22,000 ^k //20,700 ⁿ /22,000 ⁿ
GAWR – Front, Ford//Workhorse (lbs.)	7,000 ^k //6,000 ^m /7,500 ⁿ	7,000 ^k //6,000 ^m /7,500 ⁿ	7,000 ⁱ //7,500 ⁿ	7,000 ⁱ /7,500 ^k //7,500 ⁿ /8,000 ⁿ
GAWR – Rear, Ford//Workhorse (lbs.)	13,500 ^k //12,000 ^m /13,500 ⁿ	13,500 ^k //12,000 ^m /13,500 ⁿ	13,500 ⁱ //13,500 ⁿ	13,500 ⁱ /14,500 ^k //13,500 ⁿ /14,500 ⁿ
Wheelbase – Ford/Workhorse	190"/190"	208"/208"	220"/220"	228"/228"

j= Ford Standard k= Ford Optional m= Workhorse Standard n= Workhorse Optional

Standard - S Optional - O

30W 32V 34D 36M


AUTOMOTIVE/CHASSIS

Chassis – Ford® 6.8L SOHC Triton® V10 310-hp, 4-speed overdrive transmission, 4-wheel anti-lock brake system, 130-amp. alternator	O	O	S	S
Chassis – Workhorse™ 8.1L Vortec V8 340-hp, 4L85E 4-speed overdrive transmission, 4-wheel anti-lock brakes, 145-amp. alternator	S	S		
Chassis – Workhorse 8.1L Vortec V8 340-hp, Allison® LCT 1000 5-speed overdrive transmission, 4-wheel anti-lock brakes, 145-amp. alternator	O	O	O	O
Leveling Jacks (front & rear) HWH hydraulic, manual touchpad, Tire spare, Tire Tool wrench, Trailer Hitch 5,000-lbs. drawbar/350-lbs. maximum vertical tongue weight & wiring, ⁹ Wheel Liners stainless steel	S	S	S	S
Stabilizer Package front shocks (Workhorse 18,000 GVWR only) ^d	O	O		

CAB AREA & DRIVER CONVENIENCES

Cab Seats lumbar support, w/3-point adjustable seat belts, armrests, multi-adjustable swivel/slide/recline, fabric covered, Cigarette Lighter/12-Volt Powerpoint	S	S	S	S
Convenience Tray, Cruise Control, Door (driver) entry, assist bar, courtesy light, TriMark® KeyOne system, Floor Mats carpet driver & passenger, Map Light, Steering Wheel tilt w/power assist, Sunvisors (2), Trim Panels driver & passenger sides (12-volt powerpoint passenger side), Window (driver) power, Window (passenger) full-slider w/screen, Windshield Wipers intermittent	S	S	S	S
Cab Seats leather insert w/vinyl surround	O	O	O	O
Cab Seat Pedestal 6-way power assist (driver)	O	O	O	O
Defroster Fans (2) auxiliary 2-speed w/instrument panel switch	O	O	O	O
GPS mapping system available Fall 2003	O	O	O	O
Monitor System rearview, B/W, w/single camera & 1-way audio, Sony	O	O	O	O
Workstation in dash	O	O	O	O

ENTERTAINMENT

 (Cab) AM/FM stereo cassette/CD player w/remote control & weather band, roof-mounted flexible rubber antenna, speakers (4), Radio Power Switch main/auxiliary battery, Satellite System Ready, Telephone input & interior jack	S	S	S	S
TV 25" Color AC Stereo w/remote, TV Enhancement Package antenna	S	S	S	S

30W 32V 34D 36M

Refrigerator/Freezer ^d 4-door w/icemaker			O	O
Refrigerator/Freezer ^d large double-door w/icemaker	O	O	O	O

BATH

Cabinet lavatory, Cabinet medicine, Faucet (shower) single-control w/Moen Posi-Temp and fixed showerhead, Faucet (lavatory) dual-control, Light shower, Lights makeup, Shower w/wall surround, Shower Door textured glass, Shower Skylight, Sink oval, Tissue Holder, Toilet porcelain, w/foot-pedal flush & sprayer, Towel Rack 3-rod, mounted to door, Towel Ring	S	S	S	S
Cabinet linen	S			
Magazine Rack	S			
Mirror	S			S
Clothes Rod removable, located in shower	S	S	S	
Showerhead hand-held	O	O	O	O
Shower Seat fold-down	O	O	O	O
Wall Border private toilet area	S	S		

BEDROOM

Bed queen, innerspring Serta® mattress, w/underbed storage, Bedspring pillow shams, pillows, Ceiling Molding, Lights decorative wall lamps, Nightstand(s), Wall Border, Wardrobe Cabinet carpeted floor, clothes rod, drawers, light, mirrored/wood doors	S	S	S	S
Mirror	S	S		
Vanity Cabinet/Desk w/folding chair	S	S		S

EXTERIOR

Awning Rails w/rain gutters, Door entrance w/separate screen door, deadbolt lock, Entrance Door Steps double, electric w/doorjamb switch, Graphics Packages Warm Silver Metallic or Cirrus Blue Metallic, Ladder, Light porch w/interior switch, Light service, driver side, Mirrors electric remote w/defrost, Mudflaps rear (2), Receptacle AC duplex, Sidewall Skin one-piece, smooth fiberglass, Storage Compartments valance panels, trunk liner, gas cylinders, TriMark KeyOne system, paddle latch, lights	S	S	S	S
Awning ^d patio	O	O	O	O

(amplified), 12-volt powerpoint, interior jack(s), coax wiring, cable input, antenna check reminder light, TV shelf, Video Selection System				
CB Prep antenna, antenna lead, 12-volt powerpoint	O	O	O	O
CD Player compact multi-disc changer	O	O	O	O
Entertainment Center (Exterior) DC receptacle, AC duplex receptacle, AM/FM radio w/CD player & remote, TV jack, radio antenna, speakers (2), lockable compartment, removable table	O	O	O	O
Radios (4) two-way, docking port w/charger	O	O	O	O
Satellite Dish Antenna Winegard, [®] RV digital, elevation sensing unit	O	O	O	O
TV 19" Color AC w/remote, bedroom	O	O	O	O
DVD/VCR Stereo Combo w/remote	O	O	O	O
Satellite Radio (Available Fall 2003)	O	O	O	O

INTERIOR

Ceiling fabric, Clock , Cupholder(s) , Curtain front wraparound w/track, Lights ceiling, incandescent w/wall switches, Lights fluorescent lights, recessed, galley, lounge w/wall switches, Lights reading, Picture , Shades day/night pleated (lounge, dinette, bedroom), mini blinds (galley)	S	S	S	S
Mirror		S	S	
Windows dual-glazed/thermo-insulated	O	O	O	O

CABINETRY

Portsmouth Oak stile-and-rail construction w/raised-panel inserts on upper doors	S	S	S	S
---	---	---	---	---

COUNTERTOPS

Solid-Surface galley	S	S	S	S
-----------------------------	---	---	---	---

FLOORCOVERING

Carpeting w/pad, Vinyl bath, Vinyl Plank galley	S	S	S	S
--	---	---	---	---

FURNITURE

Dinette (BenchMark) w/access to storage below	S	S	S	S
REST EASY[®] Multi-Position Lounge (Stitchcraft) , power recliner w/throw pillow	S	S	S	
Couch (Stitchcraft) w/throw pillow	S			
Lounge Chair hoop-base rocker/recliner, footrest, magazine rack				S
Lounge Chair hoop-base rocker/recliner, cabinet w/table, footrest & magazine rack	O	S	S	
Dining Table w/extendable pull-up leaf & chairs (2) free-standing & (2) folding		O	O	O

GALLEY

Faucet single-control, Galley Rail , Microwave Oven w/range fan, Sharp, [®] Range three-burner w/oven, Magic Chef, Range Cover , Refrigerator/Freezer large double-door, Sink double-bowl molded w/sink cover, Wall Border , Wastepaper Basket , Water Purification System cold water only	S	S	S	S
Coffeemaker	O	O	O	O
Countertop flip-up extension		S	S	S
Light decorative dining light		S	S	S
Microwave/Convection Oven w/range fan, Sharp	O	O	O	O
Pantry w/adjustable shelves				S
Pantry (2) slideout cabinet w/adjustable shelves		S	S	
Pantry (2) slideout w/adjustable shelves, hinged door	S			
Range Top three-burner w/storage below, Magic Chef	O	O	O	O

- a The height of each model is based on the curb weight of a typically equipped unit on the standard chassis. The actual height of your vehicle may vary by as much as 2" depending on chassis or equipment variations.
- b Brave floorplans feature a wide-body design—over 96". In making your purchase decision, you should be aware that some states restrict access on some or all state roads to 96" in body width. Before making your purchase decision, you should confirm the road usage laws in the states of interest to you.
- c Your motor home's load capacity is designated by weight, not by volume, so you cannot necessarily use all available space when loading your motor home.
- d Not all items available in combination. See dealer for details.

Awning ^d patio, electric w/wind sensor & remote	O	O	O	O
Undercoating Workhorse Chassis	O	O	O	O

SYSTEMS

Automotive Heater/Air Conditioner, Auxiliary Start Circuit, Batteries (Coach) (2) deep cycle, Battery (Coach) disconnect system, Battery Charge Control automatic dual, Drain 1" water tank, Electrical Distribution System AC & DC breaker panels, 45-amp. converter/charger, Generator/Shoreline Automatic Changeover Switch , Monitor Panel wall-mounted, battery condition gauge, generator hourmeter gauge, generator start/stop switch, holding tank levels, LP tank level, water heater switch & lights, water pump switch, water tank level, Roof Vent ^d nonpowered, galley, Roof Vent powered, bath, Service Center (Drainage/Water) city water hookup/tank diverter fill, drainage valves, exterior wash station w/pump switch, sewer hose, Service Center (Electrical) cable input, 30-amp. power cord, Sewer Hose 10' , Tank flushing system, black tank only, Tank holding, heated compartment, Tank LP , permanent mount w/gauge, Water Heater 6-gallon electronic ignition w/Motoraid & auto heater, Water Pump demand, Water System Winterizing Package , bypass valve, water heater siphon tube, Water Tank Fill gravity ^d	S	S	S	S
Air Conditioner (Roof) 14,800 BTU	S			
Air Conditioners (Roof) (2) ^d high efficiency w/energy management system, ceiling distribution	O	S	S	S
Furnace 35,000 BTU, low profile	S	S		
Furnace 40,000 BTU, low profile			S	S
Generator ^d 4,000-watt, Onan MicroQuiet, gas	S			
Generator ^d 5,500-watt, Onan Marquis Gold, gas	O	S	S	S
Generator ^d 7,000-watt, Onan Marquis Gold, gas	O	O	O	O
Heat Pump(s) ^d	O	O	O	O
Inverter ^d DC/AC, 300-watt	O	O	O	O
Power Cord 50-amp.	O	O	O	
Roof Vent ^d nonpowered, bedroom	S			
Roof Vent powered ventilator fan ^d galley	O	O	O	O
Solar Panel 10-watt w/battery charger	O	O	O	O
Washer/Dryer Combination		O	O	
Washer/Dryer Prep		S	S	
Water Heater 6-gallon electronic ignition, 110 vac/LP gas w/Motoraid & auto heater	O	O	O	O
SLIDEOUT				
Slideout Room bed	S	S	S	S
Slideout Room couch/dinette, w/slideroom cover, STOREMORE		S	S	S
Slideout Room dinette/galley, w/slideroom cover, STOREMORE	S			
SAFETY				
Assist Bar interior, Assist Handle exterior, Bumpers front & rear, Detectors/Alarms LP leak, smoke, carbon monoxide, Fire Extinguisher 10 B.C., Ground Fault Interrupter , Light center high-mount brake lamp, Light courtesy w/wall switch, Lights daytime running lamps, Window escape, Windshield laminated safety glass	S	S	S	S
WARRANTY ^h				
12-month/15,000-mile basic limited warranty ,	S	S	S	S
36-month/36,000-mile warranty on structure ⁱ				
10-year limited parts & labor warranty on roof skin				

- e Capacities shown are tank manufacturer's listed water capacity (W.C.). Actual filled LP capacity is 80% of listing due to overfilling prevention device on tank.
- f Measurements are based on the most recent information available. See your dealer for specifications.
- g Actual towing capacity is dependent on your particular loading and towing circumstances, which includes the GVWR, GAWR and GCWR, as well as adequate trailer brakes. Please refer to your vehicle's operator's manual for further towing information.
- h See separate chassis warranty details provided in owner's packet.
- i See your dealer for complete warranty information.
- Winnnebago Industries' continuing program of product improvement makes specifications, equipment, model availability and prices subject to change without notice. Comparisons to other motor homes are based on the most recent information available.

Not all motor homes are created equal.

As you take a closer look, you'll see that there is much more to the Winnebago Brave than a long list of standard features and a compelling floorplans. Beneath it all you'll find a SuperStructure® foundation of strength and durability, and Winnebago Industries' recognized service and warranty support.



We are committed to service.

We back our motor homes with the best after-the-sale service in the industry.

- 12-month/15,000-mile basic limited warranty
- 36-month/36,000-mile warranty on structure
- Standard 10-year limited parts-and-labor roof skin warranty
- Complimentary 24-hour Roadside Assistance Program
- TripSaver Fast Track Parts. TripSaver guarantees that in-stock warranty parts ship directly to your dealer within 24 hours
- Nationwide dealer service network

Certified quality.

Recreation Vehicle Dealer Association members annually rate RV manufacturers on the quality of their products, and on their sales and service support. Winnebago Industries has achieved the coveted Quality Circle Award every year since its inception, the only major motor home manufacturer to do so.

Learn more about what sets Winnebago Industries apart.

Ask your dealer for this guide. It will help you learn what makes Winnebago Industries motor homes distinctly superior to other brands.

Warning: Joining WIT has been known to cause excessive fun.

Winnebago-Itasca Travelers (WIT) is a club for owners of Winnebago Industries motor homes. WIT is a great way to meet people and offers you:



- Caravans and rallies
- Local and state group activities
- Benefits for RVers



© 2003 Winnebago Industries, Inc., Forest City, IA 50436. Printed in USA.

Seat belts are your most important hookup. Always buckle up.

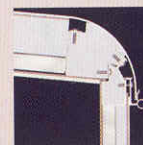
NYSE listing: WGO

Visit us at www.winnebagoind.com



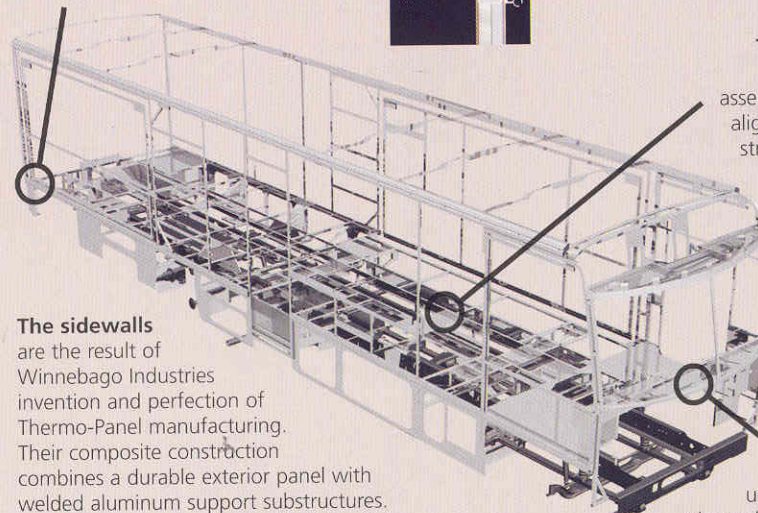
is the term given to Winnebago Industries' structural motor home design and construction. Rather than a single component, it is the culmination of design integration that incorporates steel and aluminum substructures; composite design laminated floor risers; interlocking joint technology; and Thermo-Panel® floor, roof and side-walls to form a high-strength, durable vehicle body.

Interlocking joint construction utilizes advanced extruded aluminum structural components to create integrated floor-to-sidewall and sidewall-to-roof joints. This design effectively distributes the weight of the walls and roof, making a stronger and more durable body than competitor designs that rely on screws to carry the weight.



Laminated risers feature a welded aluminum core for superior strength and provide a stable base for the floor structure and storage compartments.

The foundation substructure assembly is precision-aligned to maximize strength and cross-coach support as well as durability.



The sidewalls

are the result of Winnebago Industries invention and perfection of Thermo-Panel manufacturing. Their composite construction combines a durable exterior panel with welded aluminum support substructures. The substructures are embedded in a high-density block foam insulation core to create a strong, durable, yet lightweight sidewall.

Critical steel components are treated using an advanced electrodeposition coating process that provides superior corrosion protection.



One-year-old competitor's rubber roof



One-year-old Winnebago Industries fiberglass roof

Built to a higher standard.

Brave features a crowned, one-piece fiberglass roof skin backed with a 10-year limited parts-and-labor roof skin warranty. Fiberglass offers superior strength, attractiveness and durability over rubber roofs found on many competitive models. Over time, rubber roofs are susceptible to chalking, streaking and degradation, and have less puncture and tear resistance than fiberglass.