

2004 *Spirit*



EXPECT MORE

SURPASSING EXPECTATIONS

Each year we work hard to deliver more features and comfort in the Itasca Spirit. When you start enjoying the impressive entertainment center, RV Radio® and available, two-way, hand-held radios, you'll know that the 2004 Spirit is no exception. The following pages offer a detailed look at the Spirit. You'll find more pictures and more captions than you might expect. That's because we want you to know the whole story before you decide on a motor home. But to truly appreciate the beauty of the 2004 Spirit, you'll need to see it for yourself.



32G Chambray Blue with Portsmouth Oak

▲ Typical Class C motor homes can't match the refinements and attention to detail in the Spirit. You'll immediately notice the Portsmouth Oak cabinetry. Its raised-panel construction and durable, catalyzed finish give it a distinguished look that lasts for years. Other popular features include Stitchcraft furniture, day/night pleated shades and overhead lighting with wall switches. Control the furnace and ceiling-ducted air conditioning with a single, wall-mounted thermostat for added convenience. You can also select the available heat pump for warmth on cool mornings without starting the furnace.

Interior Decors



Chambray Blue



Greengage

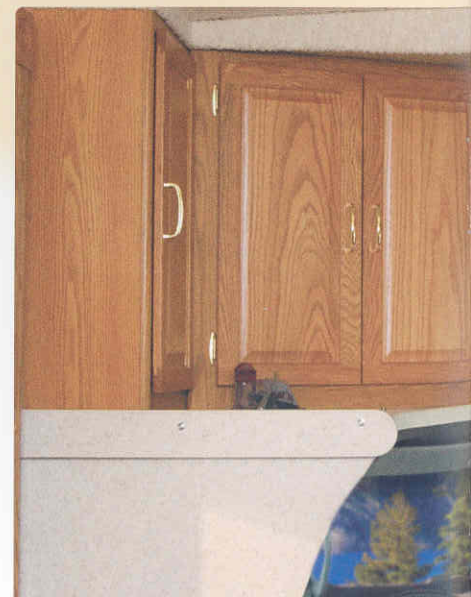


Winter Birch



Portsmouth Oak

Spirit
2004





◀ Time on the road flies by in a Spirit. You can sit comfortably for hours in the high-back Stitchcraft cab seats. They

include multiple comfort adjustments such as a recline feature and fixed lumbar support. For added luxury, choose the available UltraLeather HP™ seat covering. Power windows, power door locks and safety features like driver and passenger airbags are standard. You'll appreciate the cupholders, storage tray, and large storage compartment that are incorporated into the center console. A brushed pewter appliqué can also be added to the Ford® dash.

▲ Itasca owners are raving about the RV Radio. Bigger buttons, more features and a larger display make it one of our most

talked-about innovations. AM/FM stereo, cassette deck and CD player are all included. There's even a built-in weather band to keep you informed of travel conditions when you're on the road. A radio power switch lets you power the RV Radio from either the chassis or coach batteries.



▼ For added enjoyment, select the available front entertainment center.

It comes with a 25" stereo TV with remote and a video selection system contained in an oak cabinet above the cab area. A DVD/VCR combo can also be added. The available inverter lets you enjoy your entertainment center while you're on the road. Plus, every Spirit is satellite system ready. (Entertainment center and inverter NA on 22E and 22R.)



ELEGANT INTERIORS



▲ The rear slideroom on the 29B creates a truly spacious bedroom. Storage is plentiful with deep, overhead cabinets, an underbed compartment and a large, mirrored wardrobe. The built-in desk/vanity area in the 29B doubles as a handy workspace with a flip-up countertop and a folding chair.



▲ Enjoy a galley with everything, which includes: a microwave oven, a Magic Chef® three-burner range with oven, Congoleum® vinyl floorcovering, a recessed, molded, double-bowl sink with cover and an available water purification system. Every galley is designed for plentiful storage. The 31T even includes a cabinet in the galley with an available 19" TV for optimal viewing from the couch and dinette.



▲ The Spirit bathroom has all the amenities of home, including a residential-height toilet with foot-pedal flush, a roomy shower and spacious cabinetry. You'll enjoy even more space with the split-bath design in the 32G. A skylight in every bathroom provides natural light.



▲ The service center is conveniently located to allow quick and easy access to electrical and wastewater connections. Extend your season with the available electric heat package for the enclosed holding tanks. A water heater bypass valve and a siphon tube are standard for easy winterization.

▼ Keep the mess outside. An available exterior wash station with a lighted pump switch and an additional showerhead holder on the exterior door is perfect for rinsing off sandy or muddy items.



◀ The flush-mounted monitor panel is conveniently located, allowing you to check the status of onboard systems quickly and easily.



◀ The available, 4,000 watt Onan® MicroQuiet™ generator supplies 110-volt AC power when a shoreline source is not available.

▼ RVers are falling in love with two-way radios and now they're available with every Spirit. The set of four radios recharge from the coach batteries using the built-in charging station. Nickel metal hydride batteries provide up to 15 hours of standby time and 90 minutes of talk time on a single charge.



▲ Enjoy your favorite music outdoors with the available entertainment center. It features an AM/FM stereo, CD player, remote, DC and AC power receptacles, and a TV jack in a lockable compartment. A removable table is also provided.



◀ The exterior mirrors provide a large field of vision. The advanced, dual-breakaway design allows them to fold in when needed. Electric remote with defrost can also be added.

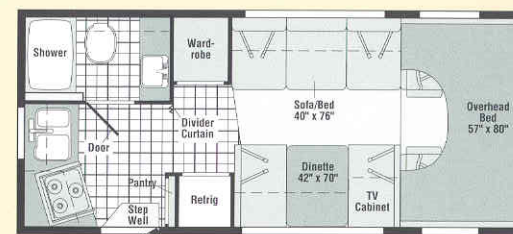
► Water runoff is no problem with built-in rain gutters that divert water away from the entrance door and windows.



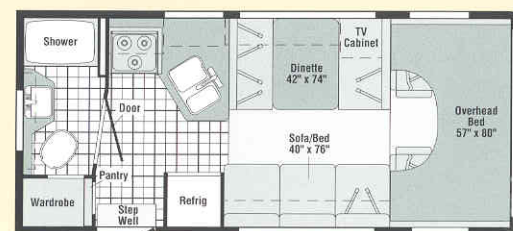
◀ Tow with ease. A 5,000-lb² towing capacity and a 350-lb. vertical tongue weight hitch is standard.

2004 Spirit

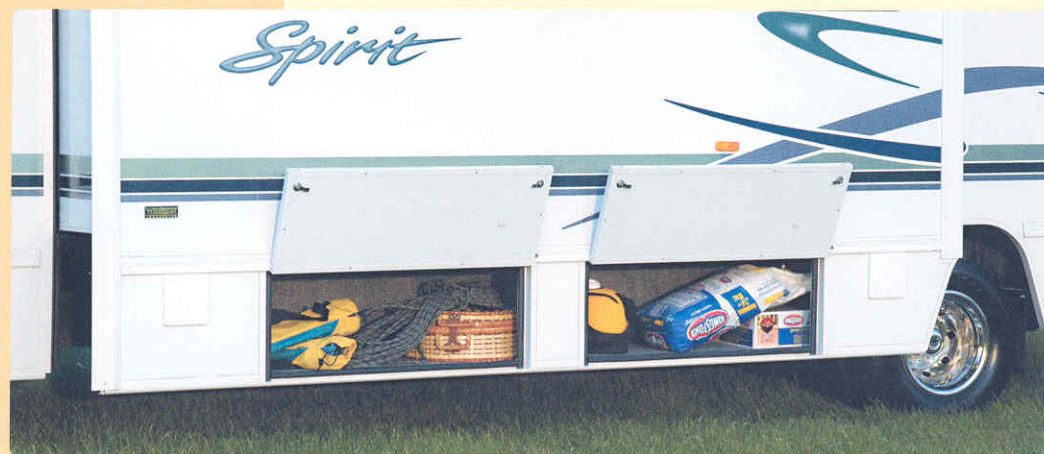
FLOORPLANS



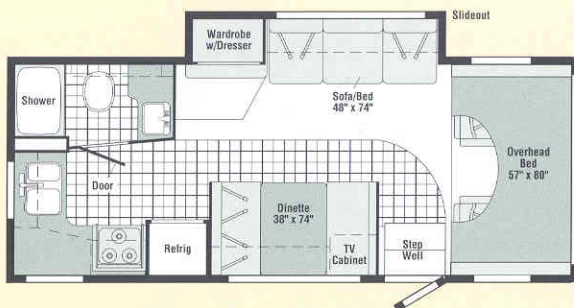
22E



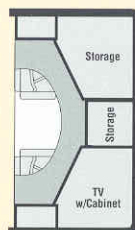
22R



▲ The slideout system, found on the 24F, 29B, 31T and 32G, uses the first electric-powered slideout system to meet Winnebago Industries' stringent quality and performance standards. Electronic synchronization delivers improved movement and tighter sealing. Built-in diagnostics make maintenance fast and easy. In addition, the 31T and 32G feature the StoreMore® slideout system. StoreMore allows the large exterior storage compartments to extend with the slideroom for easier access.



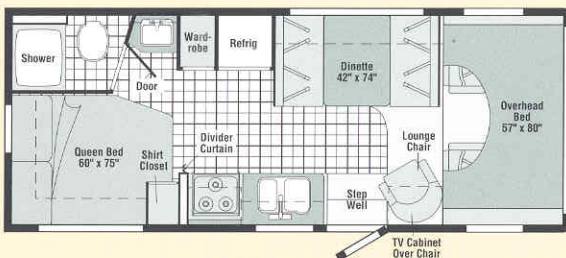
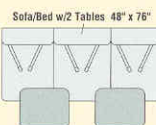
24F



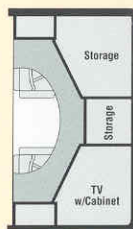
Optional Front Overhead Area



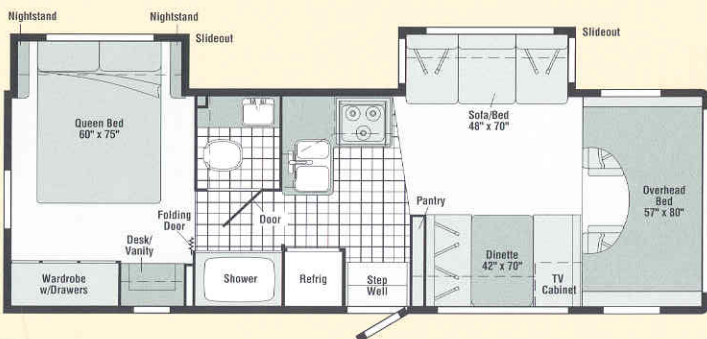
*Not available as sleeping space in Canada



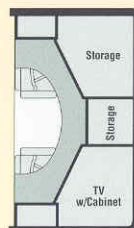
24V



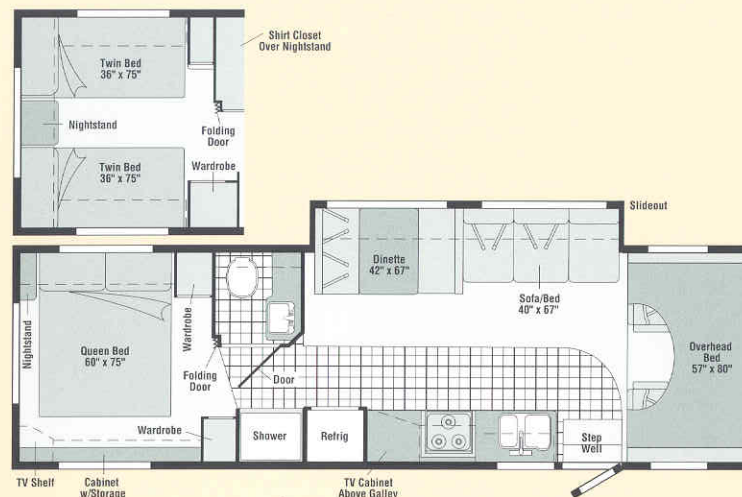
Optional Front Overhead Area



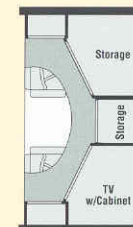
29B



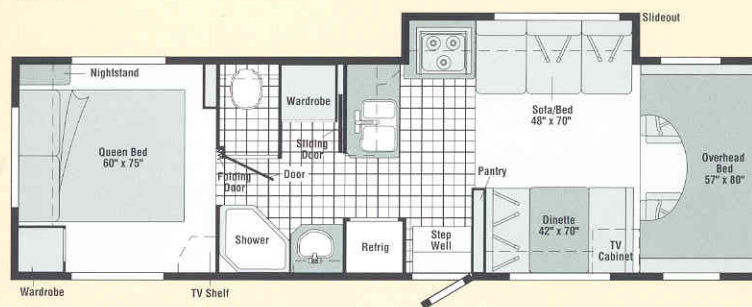
Optional Front Overhead Area



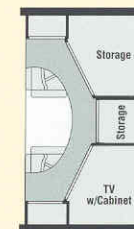
31T



Optional Front Overhead Area



32G New



Optional Front Overhead Area



Vinyl Floorcovering



Seat Belts

Note: Dimensions shown are for sleeping space only and may vary due to styling differences. Dashed lines denote overhead storage areas.

The perfect blend of function and style. The exterior of the Itasca Spirit not only looks sharp with the available vinyl patio awning and stainless steel wheel liners, it is also highly functional with aluminum running boards and tough, one-piece fiberglass walls and roof.



SPECIFICATIONS

Chassis Information

	22E	22R	24F	24V	29B	31T	32G NEW
Length – F / C	22'1" / 23'0"	22'1" / 23'0"	24'7" / 25'6"	24'7" / 25'6"	29'4" / NA	31'4" / NA	32'1" / NA
Exterior Height¹ w/AC³ – F / C	11' / 11'3"	11'2" / 11'3"	11'2" / 11'2"	11' / 11'3"	11'2" / 11'2"	11'3" / 11'3"	11'4" / 11'4"
Exterior Width²	8'5.5"	8'5.5"	8'5.5"	8'5.5"	8'5.5"	8'5.5"	8'5.5"
Exterior Storage³ (cu. ft.)	11.2	16.1	33.9	38	52.3	39.5	45.5
Interior Height	6'8"	6'8"	6'8"	6'8"	6'8"	6'8"	6'8"
Interior Width	8'	8'	8'	8'	8'	8'	8'
Fresh Water Capacity w/Heater (gal.)	36	36	39	46	42	37	37
Holding Tank Capacity – Black/Gray (gal.)	30 / 36	36 / 30	37 / 35	37 / 35	25 / 31	34 / 32	25 / 31
LP Capacity⁶ (gal.)	18	18	18	18	18	18	18
Fuel Capacity – F / C (gal.)	37 / 35	37 / 35	55 / 55	55 / 55	55 / NA	55 / NA	55 / NA
GCWR – F / FD / C (lbs.)	18,500 / NA / 16,000	18,500 / NA / 16,000	20,000 / 20,000 / NA	18,500 / 20,000 ⁷ / 16,000	20,000 / NA / NA	20,000 / NA / NA	20,000 / NA / NA
GVWR – F / FD / C (lbs.)	10,700 / NA / 12,300	10,700 / NA / 12,300	14,050 / 14,050 ⁷ / 12,300	11,500 / 14,050 ⁷ / 12,300	14,050 / NA / NA	14,050 / NA / NA	14,050 / NA / NA
GAWR – F / FD / C Front (lbs.)	4,600 / NA / 4,300	4,600 / NA / 4,300	4,600 / 4,600 / 4,300	4,600 / 4,600 ⁷ / 4,300	4,600 / NA / NA	4,600 / NA / NA	4,600 / NA / NA
GAWR – F / FD / C Rear (lbs.)	7,500 / NA / 8,600	7,500 / NA / 8,600	9,450 / 9,450 / 8,600	7,800 / 9,450 ⁷ / 8,600	9,450 / NA / NA	9,450 / NA / NA	9,450 / NA / NA
Wheelbase – F / C	138" / 139"	138" / 139"	158" / 159"	158" / 159"	190" / NA	220" / NA	215" / NA
F Ford [®] FD Ford [®] Diesel C Chevrolet [®] ⁷ Ford E450 6.8L Gas, Diesel NA							

Standards & Options

22E 22R 24F 24V 29B 31T 32G	Automotive/Chassis
S O S S S	Chassis – Ford [®] E450 6.8L Super-Duty V10 SOHC Triton [®] engine, 306-hp, automatic 4-speed overdrive transmission, 4-wheel anti-lock brakes, 130-amp. alternator, dual airbags
S S S	Chassis – Ford [®] E350 6.8L Super-Duty V10 SOHC Triton [®] engine, 306-hp, automatic 4-speed overdrive transmission, 4-wheel anti-lock brakes, 130-amp. alternator, dual airbags
O	Chassis – Ford [®] E450 6.0L Power Stroke [®] diesel engine, 235-hp, automatic 5-speed overdrive transmission, 4-wheel anti-lock brakes, 130-amp. alternator, dual airbags (available January 2004)
O O O O	Chassis – Chevrolet [®] 6.0L V8 engine, 4L80-E transmission, 300-hp, 4-wheel anti-lock brakes, 145-amp. alternator, dual airbags
O O O	Air Springs auxiliary rear
S S S S S S S	Tire spare, Tire Tool wrench, Trailer Hitch ⁹ 5,000-lbs. draw bar/350-lbs. maximum vertical tongue weight & wiring, Wheelcovers stainless steel
O O O O O O O	Wheel Liners stainless steel

22E 22R 24F 24V 29B 31T 32G	Cab Area & Driver Conveniences
S S S S S S S	Beverage Holder, Cab Seats (fabric) w/3-point adjustable seat belts, armrest, lumbar support, multi-adjustable slide/recline, Cigarette Lighter/12-Volt Powerpoint, Cruise Control

22E 22R 24F 24V 29B 31T 32G	Cab Area & Driver Conveniences (cont.)
S S S S S S S	Curtain cab divider & bunk privacy, Domelight, Floor Mats rubber driver & passenger, Hood Release, Power Door Locks & Windows, Steering Wheel tilt w/power assist, Sunvisors (2), Trim Panels driver & passenger doors (chassis supplied)
O O O O O O O	Cab Seats (UltraLeather HP[™])
O O O O O O O	Instrument Panel Appliqué Ford [®]

22E 22R 24F 24V 29B 31T 32G	Entertainment
S S S S S S S	Radio (Cab) AM/FM stereo/radio cassette/CD w/weather band, speakers (4) (Ford [®] chassis only), Radio Power Switch main/auxiliary, Satellite System Ready, TV Enhancement Package antenna (amplified), 12-volt powerpoint(s), interior jack(s), coax wiring, cable input (31T & 32G include bedroom TV shelf or stand)
S S S S	Radio (Cab) AM/FM stereo CD, speakers (4), Chevrolet [®]
O O O O O O O	Entertainment Center (Exterior) w/CD Player remote, DC receptacle, AC duplex receptacle, AM/FM radio, TV jack, radio antenna, removable TV table, speakers (2), lockable compartment
O O O O O O O	Radios (4) two-way, docking port w/charger
O O O O O O O	Satellite Dish Antenna RV digital, elevation sensing unit
O O O O O	TV 13" Color 12-Volt & VCP⁵ w/remotes, front lounge/dinette area w/slide/swivel shelf, Audiovox [®]
O	TV 19" Color Stereo w/remote, video selection system, galley overhead cabinet ⁵ RCA [®]

22E 22R 24F 24V 29B 31T 32G	Entertainment (cont.)
O O O O O	TV 25" Stereo Color AC⁵ w/remote, video selection system, includes front overhead entertainment center, Samsung [®]
O O O O O	DVD/VCR Stereo Combo w/remote ⁵
22E 22R 24F 24V 29B 31T 32G	Interior
S S S S S S S	Bunk front overhead w/mattress, sliding side windows, privacy curtain, storage cabinet, Ceiling fabric, Cupholder(s) , Lights ceiling, incandescent w/wall switches, ⁵ Roof Vent nonpowered ⁵ front overhead bunk, ⁵ Shades pleated, day/night (lounge, dinette, bedroom), mini blinds (bath, galley)
S S	Bunk Ladder
O O O O O O O	Bunk Window front ⁵ delete
S S	Mirror lounge
S S S S	Roof Vent nonpowered, lounge ⁵
S S S S S	Wardrobe Cabinet carpeted shelf, clothes rod, mirrored door(s)
O O O O O O O	Windows dual-glazed, thermo-insulated

22E	22R	24F	24V	29B	31T	32G	Cabinetry
S	S	S	S	S	S	S	Portsmouth Oak stile-and-rail construction w/raised-panel inserts on upper doors

22E	22R	24F	24V	29B	31T	32G	Countertops
S	S	S	S	S	S	S	Laminate w/T-molded edge

22E	22R	24F	24V	29B	31T	32G	Floorcovering
S	S	S	S	S	S	S	Carpeting w/pad, Vinyl main entry, bath & galley, Congoleum®

22E	22R	24F	24V	29B	31T	32G	Furniture
S	S	S	S	S	S	S	Dinette access to storage below, Stitchcraft
						O	Dinette (Rear) ⁵ L-shaped, Stitchcraft
						S	Lounge Chair w/swivel/slide, Stitchcraft
S	S	S		S	S	S	Sofa Stitchcraft
						O	Sofa w/2 pedestal tables, Stitchcraft

22E	22R	24F	24V	29B	31T	32G	Galley
S	S	S	S	S	S	S	Faucet single-control, Microwave Oven Samsung® Range three-burner w/oven, Magic Chef® Refrigerator/Freezer double-door, Norcold® Sink recessed, molded, double w/sink cover (countertop material), Wall Border
				S	S	S	Countertop flip-up extension
				S			Galley Rail countertop material
S	S		S		S		Pantry
S							Range Hood ductless w/light & fan
			S	S	S	S	Range Hood vented w/light & fan
O	O	O	O	O	O	O	Water Purification System

22E	22R	24F	24V	29B	31T	32G	Bath
S	S	S	S	S	S	S	Cabinet lavatory, Cabinet medicine, Faucet (lavatory) dual-control, Faucet (shower) dual-control w/flexible showerhead, Roof Vent power, Shower light & skylight, Tissue Holder, Toilet w/foot-pedal flush, Towel Rack 3-rod, mounted to door
S	S		S	S			Mirror
O	O	O	O	O	O	O	Roof Vent ⁵ powered ventilator fan
S	S	S	S	S	S		Shower Door folding
			O	O	S		Shower Door glass
					S		Sink oval
S	S	S	S	S	S		Sink rectangular w/molded soap dishes
S		S	S	S	S	S	Towel Bar
S	S	S	S	S		S	Towel Ring
S	S	S	S	S	S		Clothes Rod removable

22E	22R	24F	24V	29B	31T	32G	Bedroom
S	S	S	S				Bed Serta® queen, w/underbed storage
				O			Beds ⁵ twin, w/underbed storage
S	S	S	S				Bedsread pillow shams, pillows
S		S					Lights decorative wall lamp(s)
S	S	S					Nightstand(s) w/drawer(s)
S	S	S					Roof Vent nonpowered
S							Shirt Closet
	S						Vanity Cabinet w/flip-up countertop, folding chair
	S	S	S				Wardrobe Cabinet(s) drawers

22E	22R	24F	24V	29B	31T	32G	Exterior
S	S	S	S	S	S	S	Awning Rails w/rain gutters, Door entrance w/separate screen door, deadbolt lock, Entrance Door Step(s) manual, Ladder, Light porch w/interior switch, Mirrors manual adjust w/convex, Mudflaps rear, Receptacle AC duplex, ⁵ Running Boards aluminum, Sidewall Skin one-piece smooth fiberglass, Storage Compartment w/trunk liner
O	O	O	O	O	O	O	Awning ^{5,*} patio, vinyl
O	O	O	O	O	O	O	Entrance Door Step(s) electric w/doorjamb switch
O	O	O	O	O	O	O	Mirrors electric remote w/defrost

22E	22R	24F	24V	29B	31T	32G	Systems
S	S	S	S	S	S	S	Auxiliary Start Circuit, Battery (Coach) Group 24 deep cycle, Battery (Coach) disconnect system, Battery Charge Control automatic dual, Drain 1" water tank, Electrical Distribution System DC fuses, AC breakers, 45-amp. electronic converter/charger, Generator Prep Kit, Monitor Panel wall-mount, battery condition gauge, generator hourmeter gauge, ⁵ generator start/stop switch, ⁵ holding tank levels, LP tank level, water heater light(s), water heater switch, water pump switch, water tank level, Power Cord 30-amp., 25', Sewer Hose 10', stores in drain valve compartment, Tank LP, permanent mount w/gauge, Water Heater 6-gallon, electronic ignition, LP gas, Water System Winterization Package water heater by-pass valve & siphon tube, Water Hookup city, Water Pump demand, Water Tank Fill w/locking door
S	S	S	S				Air Conditioner (Roof) 13,500 BTU, ceiling-ducted w/wall thermostat
			S	S	S		Air Conditioner (Roof) 14,800 BTU, ceiling-ducted w/wall thermostat
O	O	O	O	O	O	O	Heat Pump w/roof A/C
O	O	O	O	O	O	O	Batteries (Coach) (2) Group 24 deep cycle
O	O	O	O	O	O	O	Drainage System ⁵ heated, electric, one heat pad per tank, pipe wraps & lighted on/off switch next to monitor panel
S	S	S	S	S			Furnace 25,000 BTU, low profile
			S	S	S		Furnace 30,000 BTU, low profile
			O				Generator ⁵ 3,600 watt, Onan® MicroQuiet™ LP
O	O	O	O	O	O	O	Generator ⁵ 4,000 watt, Onan® MicroQuiet™ gas
			O	O	O	O	Inverter ⁵ DC/AC, 130 watt
O	O	O	O	O	O	O	Wash Station exterior, w/pump switch

22E	22R	24F	24V	29B	31T	32G	Slideout
			S				Slideout Room front sofa/wardrobe w/slideroom cover
			S				Slideout Room front sofa w/slideroom cover
			S				Slideout Room rear bed w/slideroom cover
			S				STOREMORE® Slideout Room front dining/lounge w/slideroom cover
			S				STOREMORE® Slideout Room sofa/range w/slideroom cover

22E	22R	24F	24V	29B	31T	32G	Safety
S	S	S	S	S	S	S	Airbags driver & passenger, Assist Handle exterior, Assist Strap interior, Brake Light high mount, Bumpers front & rear, Detectors/Alarms LP leak, smoke, carbon monoxide, Fire Extinguisher 10 B.C., Ground Fault Interrupter, Light center high-mount stop lamp, Light(s) courtesy w/wall switch(es), Seat Belts cab, 3-point, Seat Belts lap (in selected areas)
			S	S	S	S	Window escape

22E	22R	24F	24V	29B	31T	32G	Warranty ¹⁰
S	S	S	S	S	S	S	12-month/15,000-mile basic limited warranty, ¹¹ 36-month/36,000-mile warranty on structure, ¹¹ 10-year limited parts & labor warranty on roof skin ¹¹

- The height of each model is based on the curb weight of a typically equipped unit on the standard chassis. The actual height of your vehicle may vary by as much as 2" depending on chassis or equipment variations.
- Spirit floorplans feature a wide-body design — over 96". In making your purchase decision, you should be aware that some states restrict access on some or all state roads to 96" in body width. Before making your purchase decision, you should confirm the road usage laws in the states of interest to you.
- Measurements are based on the most recent information. See your dealer for updated specifications.
- Your motor home's load capacity is designated by weight, not by volume, so you cannot necessarily use all available space when loading your motor home.
- Not all items available in combination. See dealer for details.
- Capacities shown are tank manufacturer's listed water capacity (W.C.). Actual filled LP capacity is 80% of listing due to overfilling prevention device on tank.
- The 24F Ford® optional diesel with California emissions is a 14,000 GVWR.
- Awning is not available in Canada.
- Actual towing capacity is dependent on your particular loading and towing circumstances which includes GVWR, GAWR, and GCWR as well as adequate trailer brakes. Please refer to your vehicle's operator's manual for further towing information.
- See separate chassis warranty details provided in owner's packet.
- See your dealer for complete warranty information.

NA Not Available

S Standard

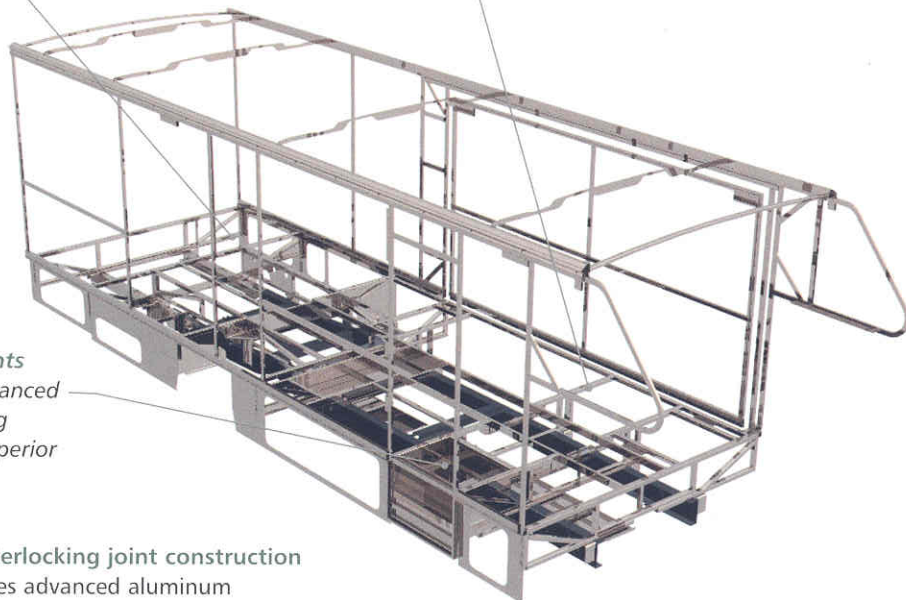
O Optional

Winnebago Industries® continuing program of product improvement makes specifications, equipment, model availability and prices subject to change without notice. Comparisons to other motor homes are based on the most recent information available.

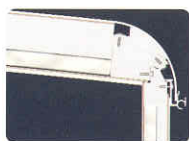
Not all motor homes are created equal. SuperStructure® is the term given to Winnebago Industries' structural motor home design and construction. Rather than a single component, it is the culmination of design integration that incorporates steel and aluminum substructures, composite-design laminated floor risers, interlocking joint technology and Thermo-Panel® floor, roof and sidewalls to form an incredibly strong, durable vehicle body.

Tubular risers feature a truss-design core for superior strength and provide a stable base for the floor structure and storage compartments.

The foundation substructure maximizes longitudinal and cross-coach support.



Critical steel components are treated using an advanced electrodeposition coating process that provides superior corrosion protection.



◀ **Interlocking joint construction** utilizes advanced aluminum structural components to create integrated floor-to-sidewall and sidewall-to-roof joints. This design

effectively distributes the weight of the walls and roof, making a stronger and more durable body than competitor designs that require screws to carry the weight.

We invented Thermo-Panel sidewall construction and, over the years, have perfected this innovative composite construction process. It combines an exterior fiberglass panel, high-density block foam insulation and welded aluminum support structures to create some of the strongest, most durable and lightweight sidewalls in the industry.



1-year old Itasca fiberglass roof



1-year old competitor's rubber roof

◀ **Built to a higher standard.** The Spirit features a crowned, one-piece fiberglass roof, backed with a 10-year limited parts-and-labor roof skin warranty. Fiberglass offers superior strength, attractiveness and durability over the rubber roofs found on many competitive models which can chalk, streak and degrade over time. Fiberglass also provides increased puncture and tear resistance.

Committed to service. We back our motor homes with the industry's best service after the sale.



- 12-month/15,000-mile basic limited warranty
- 36-month/36,000-mile warranty on structure
- Standard 10-year limited parts-and-labor roof skin warranty
- Complimentary 24-hour roadside assistance program
- TripSaver Fast Track Parts. TripSaver guarantees that in-stock warranty parts ship directly to your dealer within 24 hours.
- National dealer service network



Recognized quality. Recreation Vehicle Dealer Association members annually rate RV manufacturers on the quality of their products, and sales and service support. Winnebago Industries has achieved the coveted Quality Circle award every year since its inception, the only major motor home manufacturer to do so.



All motor homes are not created equal. Learn more about what sets Winnebago Industries apart. Ask your dealer for this guide. It will help you learn what makes Winnebago Industries motor homes distinctly superior to other brands.



WARNING: Joining WIT has been known to cause excessive fun. Winnebago-Itasca Travelers (WIT) is a club for owners of Winnebago Industries motor homes. WIT is a great way to meet people and offers you:

- Caravans and rallies
- Local and state group activities
- RV travel benefits

winnebagoind.com
NYSE listing: WGO

For Sales and Service Information Contact:



©2003 Winnebago Industries, Inc.



Printed in USA

Seat belts are your most important hookup. Always buckle up.