

2004 *Sunflyer*



GAS POWERED LUXURY



# YOUR COACH HAS ARRIVED

Never before have so many upscale features and amenities been offered in a gas-powered coach. The 2004 Itasca Sunflyer offers all the luxury and elegance of diesel pushers in the convenience and driveability of gas. We started with a 22,000-lb. GVWR Workhorse™ chassis, a robust 340-hp Vortec gas engine and a dependable Allison® transmission. We then added premium features like a Sleep Number® bed, stand-alone entertainment center, and a host of other premium features.

You'll notice many key Sunflyer product features shown in detail throughout this brochure. We believe that providing you with more detailed information, rather than a few large photos, will help you select the motor home that is perfect for you. Thank you for considering the 2004 Sunflyer.



39D Briarwood with Portsmouth Oak

▲ Enjoy the large, elegant living area provided by the StoreMore® slideroom as you relax on the premium Stitchcraft furniture. The J-lounge (shown, 39D only) can be upgraded to UltraLeather HP™ for additional style and comfort. You'll even be able to entertain guests at the dining table, which expands to accommodate four place settings. The entire coach is nicely accented by the abundant interior cabinetry, which features solid-wood doors and cabinet facings. A catalyzed, protective topcoat finish creates a highly durable, luxurious satin coating typically found in exclusive home cabinetry.

## Interior Decors



Briarwood



Fernblock



Concert Cherry



Portsmouth Oak



Washed Maple



◀ A beautifully crafted, stand-alone entertainment center is standard. It offers an optimal view of the impressive 32" TV from the lounge area. Every Sunflyer comes equipped with a 5-channel QSurround™ theater sound system, DVD/VCR combo and a video selection system for your viewing pleasure. Watch TV or enjoy other 110-volt AC appliances without needing a generator or shoreline power, thanks to the 2,000 watt inverter/charger. A manual, powered or In-Motion RV digital satellite dish is also available.

*Sunflyer*  
2004





▲ The slideout bedroom on the Sunflyer offers generous storage in a cedar-lined wardrobe with mirrored doors. The Sleep Number bed is flanked by two nightstands that can include an available stereo with CD player. A desk with a telephone jack and electrical outlet provides an equally versatile vanity area with its tip-up mirror. There's even a 19" TV concealed in a decorative wood cabinet.



◀ Sleep Number Bed. The bedroom features a queen-size Sleep Number bed by Select Comfort.™ Using the hand-held remote on each side of the bed, you can quickly and independently adjust the mattress firmness level to your ideal level of comfort and support...your Sleep Number, which is The Key to a Perfect Night's Sleep!™



◀ Sunflyer innovation is changing the shape of motor home galleys. This user-friendly, U-shaped galley design incorporates: a recessed range with Corian® cover, an available dishwasher, Corian solid-surface countertops, a Swanstone™ solid-surface sink, Moen® single-control faucet and the Everpure® water filtration system. Stainless steel appliances include a residential microwave/convection oven or available G.E. Advantium™ Speedcook oven. The available Dirt Devil® central vacuum cleaner makes cleanup quick and easy.



◀ An available 4-door refrigerator/freezer with icemaker (shown here) provides abundant cold food storage space. The standard double-door refrigerator/freezer with icemaker includes a pull-out pantry with adjustable shelves. And with the standard 2,000 watt inverter/charger, you can even make ice while you're driving down the road.



◀ This cozy, hoop-base chair, available in UltraLeather HP, rocks and reclines for your comfort. When you're not on the road, it can be placed anywhere you please. (39T only)

► Choose the available Euro Recliner with accompanying ottoman and it will quickly become your favorite place to relax, read or watch a movie. (39T only)



▲ The Rest Easy® Multi-Position Lounge offers seating flexibility and comfort (39T only).

1. It starts as a plush couch with a flip-down beverage tray.
2. At the touch of a button, it becomes a relaxing recliner with a pullout ottoman.
3. Touch the button again and it's a contoured 75" x 60" bed. Rest Easy is also available in UltraLeather HP with dual reclining seats.

► Driving your Sunflyer is a relaxing pleasure.

The driver controls are all placed within easy reach and they include an electronic compass with an outdoor thermometer.

Backing and maneuvering are

simplified by the in-dash Sony® color rearview monitor. Additional conveniences include bus-style power sunvisors and front privacy shades with easy-to-use pull cords. The cab seats are covered in soft UltraLeather HP and the driver seat can be upgraded with an available 6-way power-assist seat pedestal. The passenger has the added benefit of an available, dash-mounted workstation. It slides toward the seat for writing postcards or using a laptop computer.



◀ RVers are falling in love with 2-way radios and now they're available

with every Sunflyer. The set of four radios recharges from the coach batteries using the built-in charging station. Nickel metal hydride batteries provide up to 15 hours of standby time and 90 minutes of talk time on a single charge.



RV-RADIO

◀ Itasca owners are raving about the RV Radio®. Bigger buttons, more features and

a larger display make it one of our most talked-about innovations. An AM/FM stereo, cassette deck and CD player are all included. There's even a built-in weather-band to keep you informed of travel conditions. For added convenience, choose the available multi-disc changer.

SIRIUS



Upgrade your listening choices

with Sirius® Satellite Radio programming (requires the satellite-ready radio, available Fall 2003). It offers 100 channels of digital entertainment. High altitude satellites deliver crystal-clear satellite programming anywhere in the U.S. with no signal fades. (Sirius Satellite Radio programming requires a subscription.)



▼ ► **One key opens most everything** thanks to the innovative KeyOne™ System. A single, double-bit key means no fumbling through a pocket full of keys to find the one you want. A driver-side, power door

lock with a keyless remote comes standard for your convenience. When unlocking doors, the exterior porch light and interior map lights stay on for 20 seconds.



**TRUEAIR**

◀ **Precision climate control is assured** in the Sunflyer thanks to Winnebago Industries® Residential Central Air

Conditioning. TrueAir utilizes the superior cooling technology of a Coleman®-Mach® cooling unit to supply optimum environmental control throughout the coach. It is located in the basement to provide a lower vehicle profile while reducing noise and eliminating condensation runoff. This location is also much easier to service and provides a lower center of gravity than less-advanced roof pod air conditioning units. On cool days, the TrueAir heat pump provides warmth, eliminating the need to burn LP.

**POWERLINE®**

► **Keep your electrical systems running smoothly**

even when operating your central air conditioning on 30-amp. shoreline power. The PowerLine® Energy Management System monitors onboard 110-volt electrical usage and automatically minimizes the nuisance of tripped campground circuits by postponing certain appliances during periods of heavy usage. As demand is lowered, PowerLine automatically returns power to secondary appliances and systems.



**ONE PLACE™**  
systems center

► **The OnePlace™ Systems Center** places important and frequently used switches, gauges, level indicators and controls in one convenient location so you can easily check them at a glance.



◀ **A large hood opening** provides easy access to the conveniently located service checkpoints.



◀ **The well-placed exterior mirrors** give you a full view of the road behind you. They feature both a flat and convex surface for added visibility while incorporating a turn signal and a breakaway design for tight storage spaces.

▼ **Standard insulated roof vents** increase circulation through the coach for improved thermal efficiency.



▼ **Maximum stopping power is assured** with 4-wheel anti-lock, twin-piston disc brakes, without the added maintenance associated with air brakes.



◀ **The GM 8100 Vortec 8.1L V8 engine** delivers 340-hp and 455 lb.-ft. of torque. The impressive power and torque of the Sunflyer will have you climbing hills and towing vehicles with ease.

▲ **A 7,000 watt Onan® Marquis Gold™ generator** comes standard. It is the quietest generator in its class with digital voltage regulation for optimum output. Choose the available 7,000 watt Onan Marquis Platinum™ for fuel-injected performance.

▲ **An electronic Allison® 1000 Series™ transmission** features Smart Logic, which learns your driving habits to fine-tune its shifting tendencies for optimum performance.

▲ **The Sunflyer delivers a better performance** and a smoother ride thanks to an 82.6" wide stance and variable ratio steering gear.

▲ **22.5" tires** provide improved ride and handling characteristics. The stylized aluminum wheels will look great for years.



◀ **A convenient exterior wash station** lets you clean up before tracking dirt into your coach. It is located in the service center along with the plumbing and electrical service connections. The new QuickPort™ Service Connection Hatch provides separate slots for hoses and cords for hassle-free hookups.

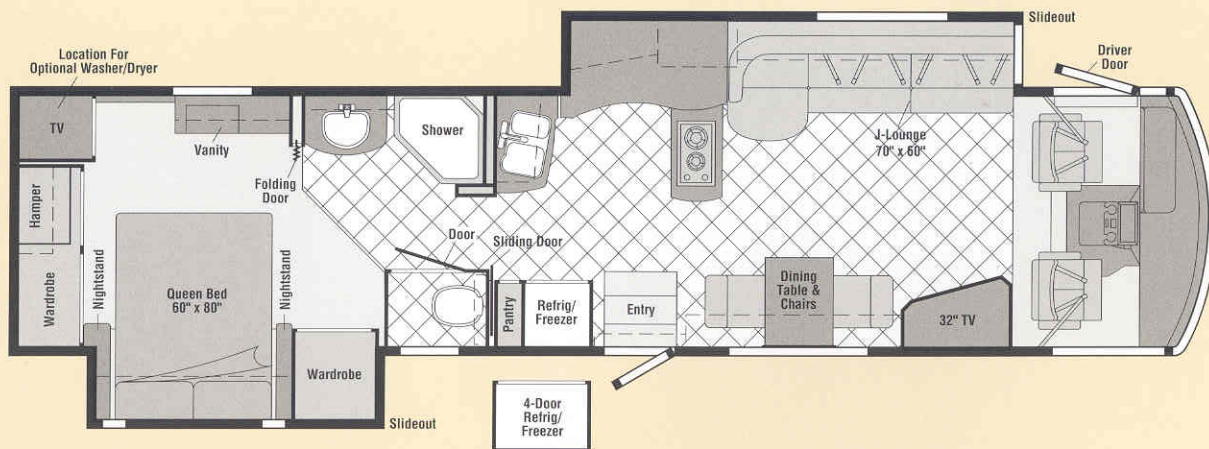
► **The front slideroom** features the StoreMore slideout system with large, well-lit exterior compartments that accommodate bulky and odd-shaped items. Best of all, these compartments extend with the slideroom so they can be accessed without crawling on your hands and knees. You'll also appreciate the gas struts and single-paddle latches. They make opening and closing compartment doors almost effortless.



▲ **The sewer hose** has a QuickConnect Coupling Valve for quick and clean hookups.



## FLOORPLANS



39D



39T

Vinyl Tile  
FloorcoveringSeat  
Belts

Note: Dimensions shown are for sleeping space only and may vary due to styling differences. Dashed lines denote overhead storage areas.

## Full-Body Exterior Color Themes

You're sure to get noticed when you pull into a campsite driving a 2004 Itasca Sunflyer. The new full-body paint on every Sunflyer gives it a style all its own.



Fernmist



Sierra



# SPECIFICATIONS

Chassis Information	39D	39T
Length	39'6"	39'6"
Exterior Height <sup>1</sup>	12'5"	12'5"
Exterior Width <sup>2</sup>	8'5.5"	8'5.5"
Exterior Storage <sup>3</sup> (cu. ft.)	136.2	136.2
Interior Height	6'8"	6'8"
Interior Width	8'5"	8'5"
Fresh Water Capacity w/Heater <sup>4</sup> (gal.)	80	80
Holding Tank Capacity – Black / Gray (gal.)	48 / 58	48 / 58
LP Capacity <sup>5</sup> (gal.)	28	28
Fuel Capacity (gal.)	75	75
GCWR <sup>6</sup> (lbs.)	26,000	26,000
GVWR (lbs.)	22,000	22,000
GAWR – Front (lbs.)	8,500	8,500
GAWR – Rear (lbs.)	15,000	15,000
Wheelbase	266"	266"

The perfect blend of function and style. The Itasca Sunflyer is equipped with stylized aluminum wheels that deliver the performance and look of a high-end luxury coach. Hydraulic leveling jacks provide additional stability while the electric patio awning with wind sensor provides instant shade.



## Standards & Options

### 39D 39T Automotive/Chassis

- S S Chassis** – Workhorse™ 8.1L Vortec V8 engine, 340-hp, Allison® 1000 Series™ 5-speed overdrive electronic transmission, 145-amp. alternator, 4-wheel anti-lock brakes
- S S Leveling Jacks** HWH hydraulic, manual touch pad, **Tire Tool** wrench, **Trailer Hitch**® 5,000-lbs. draw bar/500-lbs. maximum vertical tongue weight & wiring, **Wheels** stylized aluminum

### 39D 39T Cab Area & Driver Conveniences

- S S Cab Seats** (UltraLeather HP™) w/3-point adjustable seat belts, adjustable armrests, adjustable lumbar support, multi-adjustable slide/recline, swivel, **Cab Sound Control Package**, **Cigarette Lighter/12-Volt Powerpoint**, **Compass** electronic w/outdoor thermometer, **Convenience Tray**, **Defroster Fans (2)** auxiliary 2-speed w/instrument panel switch, **Door** (driver) w/power window & lock w/remote, **Floor Mats** carpet (driver & passenger), **Light** courtesy, driver door panel, **Map Lights (2)**, **Monitor System** rearview, color, w/single camera & 1-way audio, **Sony® Shades** filtering roller shades, cab windows, **Steering Wheel** custom w/tilt & power assist, **Sunvisors (2)** powered, **Trim Panel** (driver) leveling system controls, power door lock, power window, exterior mirror heat & adjust controls, **Trim Panel** (passenger) ledge, **Window** (passenger) full slider w/screen, dual-glazed/thermo-insulated, **Windshield Wipers** intermittent
- O O Cab Seat Pedestal** 6-way power assist (driver)
- O O GPS Navigational System**®, Alpine®
- O O Workstation** dash

### 39D 39T Entertainment

- S S CB Prep** antenna, antenna lead, **DVD/VCR** stereo w/remote, **Entertainment Center Cabinet** TV 32" color AC stereo w/remote (lounge area), **Entertainment Center (Exterior) w/CD Player** DC receptacle, AC duplex receptacle, AM/FM radio, TV jack, radio antenna, speakers (2), lockable compartment, **Winegard® (Cab)** AM/FM stereo, cassette/CD player w/weatherband, roof-mounted flexible rubber antenna, **Radio Power Switch** main/auxiliary battery, **Satellite System Ready**, **Sound System** deluxe, w/5-channel QSurrround™ amplifier, cube speakers (4), sub-woofers (2), center channel speaker, **Telephone** input & interior jacks, **TV 19" Color AC Stereo** w/remote, bedroom, **TV Enhancement Package** antenna (amplified), interior jack(s), coax wiring, cable input, antenna check reminder light, exterior antenna jack, **Video Selection System**
- O O Compact Multi-disc Changer** 10-disc changer w/remote
- O O Radios (4)** 2-way, docking port w/charger
- O O Satellite Dish Antenna** RV digital, digital, elevation sensing unit, manual, Winegard®
- O O Satellite Dish Antenna**⁴ RV digital, power, Winegard®
- O O Satellite Dish**⁴ RV digital, In-Motion
- O O Satellite Radio** (available Fall 2003), Sirius®
- O O Stereo System (Bedroom)**⁴ AM/FM CD player, alarm clock

### 39D 39T Interior

- S S Accessory Package** rechargeable flashlight, rechargeable vacuum cleaner, **Ceiling** fabric, **Clock**, **Lights** ceiling, incandescent, **Lights** fluorescent, recessed, galley, lounge, bath, hallway w/wall switches, **Lights** reading, **Picture**, **Roof Vent Shade Package**, **Shade** front wraparound w/pull cords, **Shades** day/night pleated (lounge, dinette & bedroom areas), micro-mini blind (galley area), **Windows** dual-glazed/thermo-insulated
- O O Central Vacuum Cleaner**

### 39D 39T Cabinetry

- O O Portsmouth Oak** stile-and-rail construction w/arched raised-panel inserts on upper & raised-panel inserts on lower doors
- O O Washed Maple** stile-and-rail construction w/arched raised-panel inserts on upper & raised-panel inserts on lower doors
- O O Concert Cherry** stile-and-rail construction w/arched raised-panel inserts on upper & raised-panel inserts on lower doors

### 39D 39T Countertops



- S S Solid-Surface** galley, bath & bedroom areas

### 39D 39T Floorcovering

- S S Area Rug** lounge, **Carpeting** w/pad, cab & bedroom area, **Vinyl Tile** bath, galley, lounge & main entry



39D  
39T**Furniture**

- S S Dining Table & Chairs** (2) free standing, (2) folding, table w/extendable self-storage leaf
- O Euro Recliner (Leather)** w/ottoman
- S Lounge Chair (Fabric)** hoop-base, driver-side
- O Lounge Chair (UltraLeather HP™)** hoop-base, driver-side
- S  Multi-Position Lounge (Fabric)**
- O  Multi-Position Lounge (UltraLeather HP™)**
- S Sofa<sup>4</sup> (Fabric)** J-Lounge
- O Sofa<sup>4</sup> (UltraLeather HP™)** J-Lounge

39D  
39T**Galley**

- S S Appliance Storage Cabinet, Coffeemaker, Faucet** single-control w/pull-out sprayer, **Light** ceiling, fluorescent w/decorative wood frame, **Light** decorative w/dimmer, **Light** fluorescent, under cabinet, **Microwave/Convection Oven w/Range Fan** exterior vented, residential 30"; Sharp® **Pantry<sup>1</sup>** slideout w/adjustable shelves, **Range Top** 2-burner recessed, Seaward® Princess, **Range Cover** flush-mounted (countertop material), **Refrigerator/Freezer** large double-door w/icemaker, Norcold®, **Silverware Tray, Sink** double-bowl molded Swanstone™ w/sink covers, **Towel Rack, Wastepaper Basket** w/pull-out tray, **Utility Tray** tip-out, **Water Purification System** Everpure® w/separate faucet, **Wall Border**
- O O Dishwasher** built-in under countertop
- O O Microwave/Speedcook Oven w/Range Fan<sup>4</sup>** residential 30", G.E. Advantium™
- O O Refrigerator/Freezer<sup>4</sup>** 4-door w/icemaker, Norcold®

39D  
39T**Bath**

- S S Cabinet** lavatory, **Cabinet** linen, **Cabinet** medicine, **Chair Rail, Faucet** (lavatory) dual-control, **Faucet** (shower) single-control w/flexible showerhead, **Hair Dryer** wall-mounted w/night-light, **Light** shower, **Lights** make up, **Magazine Rack, Shower Door** glass, **Shower Package** hand-held showerhead, fold-down shower seat, **Sink** oval, **Skylight, Tissue Holder, Toilet (Porcelain)** w/foot-pedal flush, **Towel Bar, Towel Rack** 3-rod, mounted to door, **Towel Ring**


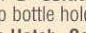
39D  
39T**Bedroom**

- S S Alarm Clock** nightstand area, **Bed** queen-size, Sleep Number® by Select Comfort™ w/underbed storage, **Bedspring, Fabric Headboard w/Wood Trim, Ceiling Molding, Hamper** pull-out, **Light** decorative w/dimmer switch, **Lights** decorative wall lamps, **Lights** halogen, **Nightstands, Throw Pillow, Vanity Cabinet** w/drawers & tip-up mirror, **Wainscoting** w/chair rail, **Wardrobe Cabinet** mirrored, carpeted, clothes rod, drawers, light, shelf, cedar-lined

39D  
39T**Exterior**

- S S Awning<sup>4</sup>** electric, patio, w/wind sensor & remote, **Awning Rails, Door** entrance, w/separate screen door, deadbolt lock, **Door** fuel-fill, locking, **Entrance Door Steps** electric w/doorjamb switch, **Exterior Full-Body Paint** Sierra or Fernmist, **Ladder, Lights** docking lamps, **Lights** fog lamps, **Light** porch w/interior switch, **Light** service, driver side, **Light** under hood, **Mirrors** electric remote w/defrost, **Mudflaps** rear, **Receptacle** AC duplex, **Sidewall Skin** 1-piece smooth, fiberglass, high-gloss, **Storage Compartments** smooth valance panels, trunk liner, TriMark® KeyOne™ System (opens driver door, entrance door, fuel-fill door, gravity water fill door & storage compartments), lights, single-paddle latch
- O O Air Horns** roof-mounted
- O O Front Protective Mask**
- O O Spotlight** roof-mounted w/wireless remote

39D  
39T**Systems**

- S S Automotive Heater/Air Conditioner, Auxiliary Start Circuit, Batteries (Coach) (3)** deep cycle, **Battery (Coach)** disconnect system, **Battery Charge Control** automatic dual, **Drain** 1" water tank, **Electrical Distribution System** AC & DC breaker panels, **Furnace** 40,000 BTU, low profile, **Generator** 7,000 watt, Onan® Marquis Gold™, gas, **Generator/Shoreline Automatic Changeover Switch, Home Comfort Plus Package** central air heat pump, auxiliary automotive heater, insulated power ventilator fans w/rain sensors (bath & galley), **Inverter/Charger** DC/AC, 2,000 watt w/remote panel, **ONEPLACE™ Systems Center** wall-mounted, courtesy light (ceiling mounted), battery digital voltmeter, **POWERLINE®** Energy Management display, generator hourmeter gauge, generator start/stop switch, holding tank levels, LP tank level, solar panel/battery charger light, water heater switch, water heater on light & pilot indicator light, water pump switch w/light, water tank level, **Power Cord** 50-amp., **POWERLINE®** Energy Management System, generator hourmeter gauge, **Powerpoint(s)** 12-volt, **Service Center (Electrical/Water)** cable TV input, city water hookup/tank diverter fill, drainage valves, exterior wash station w/pump switch, power cord, sewer hose,  **Quick CONNECT** coupling valve, telephone input, paper towel holder, soap bottle holder, monitor panel,  **QuickPort Service Connection Hatch, Solar Panel** 10 watt battery charger, **Tank** flushing system, black tank only, **Tank** holding, heated compartment, **Tank** LP, permanent mount w/gauge, **TRUEAIR®** Residential Central Air Conditioning System, **Water Heater** 10-gallon electronic ignition, LP gas/120 vac w/Motoraid, **Water System Winterization Package** water heater bypass valve & siphon tube, **Washer/Dryer Prep, Water Pump** demand, variable speed, **Water Tank Fill** gravity w/locking door, **Water Tank Fill** pressurized city hookup w/diverter valve
- O O Generator** 7,000 watt, Onan® Marquis Platinum™, gas, fuel-injected
- O O Washer/Dryer Combination**

39D  
39T**Slideout**

- S S  Slideout Room** front (lounge/galley) flat-floor slideout, **Slideout Room** rear (bed/wardrobe)

39D  
39T**Safety**

- S S Assist Bar** interior, **Assist Handle** exterior, acrylic w/logo, **Bumpers** front & rear, **Detectors/Alarms** LP leak, smoke, carbon monoxide, **Fire Extinguisher** 10 B.C., **Ground Fault Interrupter, Light** center high-mount brake lamp, **Lights** courtesy w/wall switches, **Lights** daytime running lamps, **Window** escape, **Windshield** laminated safety glass

39D  
39T**Warranty<sup>7</sup>**

- S S 12-month/15,000-mile basic warranty<sup>3</sup>, 36-month/36,000-mile warranty on structure<sup>3</sup>, 10-year limited parts & labor warranty on roof skin<sup>8</sup>**

- The height of each model is based on the curb weight of a typically equipped unit on the standard chassis. The actual height of your vehicle may vary by as much as 2" depending on chassis or equipment variations.
  - Sunflyer® floorplans feature a wide-body design — over 96". In making your purchase decision, you should be aware that some states restrict access on some or all state roads to 96" in body width. Before making your purchase decision, you should confirm the road usage laws in the states of interest to you.
  - Your motor coach's load capacity is designated by weight, not by volume, so you cannot necessarily use all available space when loading your motor coach.
  - Not all items available in combination. See dealer for details.
  - Capacities shown are tank manufacturer's listed water capacity (W.C.). Actual filled LP capacity is 80% of listing due to overfilling prevention device on tank.
  - Actual towing capacity is dependent on your particular loading and towing circumstances which includes the GVWR, GAWR and GCWR as well as adequate trailer brakes. Please refer to your vehicle's operator's manual for further towing information.
  - See separate chassis warranty details provided in owner's manual.
  - See your dealer for complete warranty information.
- S** Standard
- O** Optional

Winnebago Industries® continuing program of product improvement makes specifications, equipment, model availability and prices subject to change without notice. Comparisons to other motor homes are based on the most recent information available.



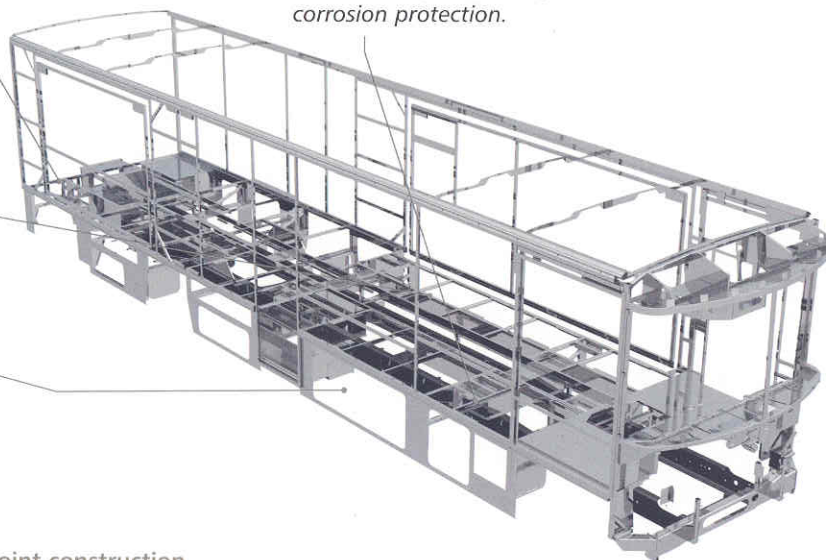
*Not all motor homes are created equal. SuperStructure® is the term given to Winnebago Industries' structural motor home design and construction. Rather than a single component, it is the culmination of design integration that incorporates steel and aluminum substructures, composite-design laminated floor risers, interlocking joint technology and Thermo-Panel® floor, roof and sidewalls to form an incredibly strong, durable vehicle body.*

*Laminated risers feature a welded aluminum core for superior strength and provide a stable base for floor structure and storage compartments.*

*The foundation substructure assembly is precision-aligned to maximize longitudinal and cross-coach support, as well as strength and durability.*

*Storage compartments attach to outrigger assemblies so the weight of stowed items is carried and dispersed throughout the foundation substructure.*

*Critical steel components are treated using an advanced electrodeposition coating process that provides superior corrosion protection.*



◀ Interlocking joint construction utilizes advanced aluminum structural components to create integrated floor-to-sidewall and sidewall-to-roof joints. This design effectively distributes the weight of the walls and roof, making a stronger and more durable body than competitor designs that require screws to carry the weight.

We invented Thermo-Panel sidewall construction and, over the years, have perfected this innovative composite construction process. It combines an exterior fiberglass panel, high-density block foam insulation and welded aluminum support structures to create some of the strongest, most durable and lightweight sidewalls in the industry.



1-year old Itasca fiberglass roof



1-year old competitor's rubber roof

◀ Built to a higher standard. The Sunflyer features a crowned, one-piece fiberglass roof, backed with a 10-year limited parts-and-labor roof skin warranty. Fiberglass offers superior strength, attractiveness and durability over the rubber roofs found on many competitive models which can chalk, streak and degrade over time. Fiberglass also provides increased puncture and tear resistance.

Committed to service. We back our motor homes with the industry's best service after the sale.



- 12-month/15,000-mile basic limited warranty
- 36-month/36,000-mile warranty on structure
- Standard 10-year limited parts-and-labor roof skin warranty
- Complimentary 24-hour roadside assistance program
- TripSaver Fast Track Parts. TripSaver guarantees that in-stock warranty parts ship directly to your dealer within 24 hours.
- National dealer service network



**Recognized quality.** Recreation Vehicle Dealer Association members annually rate RV manufacturers on the quality of their products, and sales and service support. Winnebago Industries has achieved the coveted Quality Circle award every year since its inception, the only RV manufacturer to do so.



All motor homes are not created equal. Learn more about what sets Winnebago Industries apart. Ask your dealer for this guide. It will help you learn what makes Winnebago Industries motor homes distinctly superior to other brands.



**WARNING:** Joining WIT has been known to cause excessive fun. Winnebago-Itasca Travelers (WIT) is a club for owners of Winnebago Industries motor homes. WIT is a great way to meet people and offers you:

- Caravans and rallies
- Local and state group activities
- RV travel benefits

**winnebagoind.com**  
NYSE listing: WGO

For Sales and Service Information Contact:



©2003 Winnebago Industries, Inc.



Printed in USA

Seat belts are your most important hookup. Always buckle up.